

ESCIENT®

FireBall™

DVDM-100 USER'S MANUAL



P/N: M22003-01A5



THANK YOU

The team at Escent would like to take this opportunity to thank you for purchasing an Escent FireBall product. Escent is committed to providing our customers the most technologically advanced, yet easier-than-ever to use products that converge the power of the Internet with home entertainment.

To maximize your enjoyment, please take a few minutes to review this User's Manual. It will guide you through all the features and benefits of your new FireBall.

If you should need assistance please call our Customer Support Staff at 800.372.4368

The Escent Team

PRODUCT INTRODUCTION	6
ABOUT THIS MANUAL	6
RECORD YOUR SERIAL NUMBER	6
MANUAL DISCLAIMERS	6
WARNINGS AND PRECAUTIONS	7
TRADEMARKS & SERVICE MARKS	8
WARRANTY INFORMATION	9
ESCENT PRIVACY POLICY	11
CONTACT INFORMATION	11
COPYRIGHT	11
TERMS AND DEFINITIONS	12
SETUP	13
POWER STATES	13
FRONT PANEL OVERVIEW	14
REAR PANEL OVERVIEW	15
REMOTE OVERVIEW	16
ENTERING TEXT WITH THE REMOTE CONTROL	17
<i>Entering Numeric Entry Mode</i>	17
<i>Typing Characters with the Remote</i>	17
CONNECTING EXTERNAL DISC CHANGERS	19
<i>Supported External Changers</i>	19
<i>Connecting Sony DVP-CX777ES CD/DVD Changers</i>	20
<i>Connecting Kenwood CD/DVD Changers</i>	21
<i>Connecting Sony CD Changers</i>	22
LOADING DVD MOVIE DISCS INTO CHANGERS	23
<i>Automatically Getting Disc Information</i>	24
<i>Getting Disc Information for a Range of Discs</i>	25
<i>Getting Disc Information for All Discs</i>	26

ESCENT®

FireBall™ DVDM-100 User's Manual

ADDITIONAL CONNECTION AND HOOKUP

INFORMATION 27

DIGITAL AUDIO INPUTS	27
AUDIO OUTPUTS	27
VIDEO OUTPUTS	28
RS-232 CONNECTIONS	29
INTERNAL MODEM CONNECTIONS	29
IR CONNECTIONS	29
ETHERNET CONNECTIONS	30
EXTERNAL CHANGER CONNECTIONS	32
<i>Changer Types</i>	32
<i>Control Connections</i>	32
<i>Digital Audio Connections</i>	32
<i>Analog Audio Connections</i>	32
<i>Sony CD Mega Changer Hookup</i>	32
<i>Sony DVD/CD Changer Hookup</i>	33
<i>Kenwood DVD/CD Changer Hookup</i>	33

REGISTRATION 34

TESTING A BROADBAND CONNECTION	34
TESTING A DIALUP CONNECTION	35

WATCHING DVD MOVIES 37

BROWSING YOUR MOVIE LIBRARY	37
PLAYING THE CURRENT MOVIE	37
SELECTING A DIFFERENT MOVIE	38
<i>Movie Info</i>	38
CHANGING THE GUIDE VIEW	38
<i>View By Title</i>	38
<i>View By Cover</i>	38
VIEWING BY GENRE	39

LISTENING TO MUSIC 40

BROWSING YOUR MUSIC LIBRARY	40
SHOW AND HIDE TRACKS	40
PLAYING THE CURRENT TITLE	41
SELECTING A DIFFERENT SONG	41
CHANGING THE GUIDE VIEW	42
<i>View By Artist</i>	42
<i>View By Cover</i>	42
CHANGING THE CURRENT PLAY MODE	43
VIEWING BY GENRE	44

LISTENING TO INTERNET RADIO 45

BROWSING INTERNET RADIO STATIONS	45
PLAYING THE CURRENT STATION	46

MANAGING YOUR MEDIA 47

CREATING PLAYLISTS	47
CREATING GROUPS	48
ADDING INTERNET RADIO STATIONS	49
UPDATING THE INTERNET RADIO STATIONS LIST	50
EDITING MOVIE INFORMATION	51
<i>Editing Disc Info</i>	51
<i>Automatically Lookup Information for This Disc</i>	52
<i>Searching for Movie Information Manually</i>	53
<i>Tips for Searching for Movies</i>	53
<i>Selecting an Existing Cover</i>	54
<i>Edit Description</i>	55
EDITING MUSIC INFORMATION	56
<i>Editing Track Names</i>	57
<i>Automatically Lookup Information for This Disc</i>	58
<i>Searching for the Original Cover</i>	59
<i>Tips for Searching for Covers</i>	59

<i>Selecting an Existing Cover</i>	60
EDITING RADIO INFORMATION	61
EDITING PLAYLISTS	62
EDITING GROUPS	63
DELETING MUSIC	64
DELETING PLAYLISTS	65
DELETING GROUPS	66

SETTING USER PREFERENCES 67

SETTING THE SCREEN SAVER PREFERENCES	67
<i>Activation Idle Time</i>	67
<i>Other Modes</i>	67
<i>Retail Demo Mode</i>	68
SETTING YOUR TIME ZONE	69
CUSTOMIZABLE USER INTERFACE	70
ENABLING PASSWORD PROTECTION	71
MOVIE RATINGS	72
CHOOSING YOUR NETWORK CONNECTION	73
<i>Testing the Your Connection</i>	74
<i>Ethernet Settings</i>	75
<i>Dialup Settings</i>	76
SETTING THE FIREBALL SERVER SETTINGS	77
DIGITAL INPUT PREFERENCES	78
VIDEO OUTPUT PREFERENCES	79
<i>Video Format</i>	79
<i>Centering the FireBall Screen</i>	80
<i>Adjusting your TV's Brightness</i>	81
<i>Adjusting your TV's Contrast</i>	82
<i>Adjusting your TV's Sharpness</i>	83
<i>Adjusting your TV's Color and Tint</i>	84

EXTERNAL CONTROL 85

SURROUND MODE SETTINGS	85
INSTALLING THE ETP TOUCH PANEL	86
<i>Calibrating the Touch Panel</i>	87
<i>Changing the Touch Panel Button Overlay</i>	88
<i>Using Your Touch Panel</i>	88
IR REMOTE CONTROL	89
DIRECT ACCESS CODES	90
PLAYLIST HOT KEYS	93
SERIAL COM PORTS	94
CONTROLLING FIREBALL FROM OTHER DEVICES	95

FIREBALL UTILITIES 96

GETTING INFORMATION ABOUT YOUR FIREBALL	96
RESTARTING THE SYSTEM	97
UPDATING THE SOFTWARE	98

CONTROLLING FIREBALL FROM A WEB BROWSER 99

SETTING UP THE FIREBALL WEB SERVER	99
USING THE WEB USER INTERFACE	99

NETWORKED AUDIO USING FIREBALL MUSIC CLIENTS 100

SERVICES	100
CLIENTS	100
LOCATING THE FIREBALL CLIENTS AND SERVERS	101
<i>Central</i>	101
<i>Distributed</i>	102
CONFIGURING A FIREBALL SERVER	103
CONFIGURING A FIREBALL CLIENT	103

<i>Networking</i>	103
<i>Server Selection</i>	103
ESCIENT TECHNICAL SUPPORT	104
TROUBLESHOOTING	105
NETWORK PROBLEMS	105
SOFTWARE UPDATE PROBLEMS	105
RECORDING PROBLEMS	105
ADDITIONAL INFORMATION	106
SPECIFICATIONS	106
<i>Video Specifications</i>	106
<i>Audio Specifications</i>	106
<i>Physical Specifications</i>	106
<i>3rd Party Certifications</i>	106
<i>FCC Part 15, Subpart B</i>	106
GRACENOTE® END-USER LICENSE AGREEMENT	107

ESCIENT®

FireBall™ DVDM-100 User's Manual

PRODUCT INTRODUCTION

Thank you for purchasing a FireBall Media Management system from Escient (a division of D&M Holdings).

ABOUT THIS MANUAL

This FireBall User's Manual is intended to provide the reader with an overview of the main features and benefits of the Escient FireBall Media Management Systems. For more information, please refer to the Escient web site (www.escient.com) or contact your Escient dealer.

RECORD YOUR SERIAL NUMBER

The serial number for this unit is located at the rear of the device. Please record the serial number in the space provided below. Refer to it whenever you call Escient Tech Support (800.372.4368) regarding this product.

FireBall Serial Number:

MANUAL DISCLAIMERS

At the time of printing, the screen shot images in this manual matched the interface screens. However, since FireBall has the capability of downloading software updates and enhancements on a regular basis, the resulting screen updates may no longer match the images in this manual. Please check the Escient website for more information about software updates.

ESCIENT®

FireBall™ DVD-100 User's Manual



CAUTION
Risk of Electric Shock
Do Not Open



AVIS: Risque De Choc Electrique - Ne Pas Ouvrir

WARNING: To reduce the risk of fire or electric shock do not expose this equipment to rain or moisture

WARNINGS AND PRECAUTIONS

- Do not use this apparatus near water.
- Clean only with a dry cloth.
- Do not block any ventilation openings.
- Do not install near any heat sources such as radiators, heat registers, stoves, or other apparatus (including amplifiers) that produce heat.
- To reduce the risk of electric shock, do not remove the cover. No user serviceable parts are inside. Refer servicing to qualified service personnel.
- To prevent electric shock, do not use a 3 wire to 2 wire adapter plug.
- A three prong grounded outlet is required.
- You are cautioned that any change or modification not expressly approved in this manual or approved in writing by an authorized representative of Escient could void your warranty and/or your authority to operate this equipment.
- Prolonged use of any video device which produces a static (non-moving, non-changing) or repetitive image on your projector, television or plasma display device can cause "screen burn-in". You are encouraged to leave the FireBall screen-saver turned on and set to the lowest possible "time-out" duration. Warning: This device uses the mains plug as the means to disconnect the unit, this unit remains powered unless disconnected from the mains source.

ESCIENT®

FireBall™ DVDM-100 User's Manual

The logo for Escient, featuring the word "ESCIENT" in a bold, sans-serif font with a registered trademark symbol. A large, stylized swoosh underline is positioned below the text.The logo for FireBall, featuring the word "FireBall" in a stylized, italicized font with a registered trademark symbol. To the right of the text is a graphic of a fireball with motion lines.

TRADEMARKS & SERVICE MARKS

Escient®, the Escient logo, and FireBall® are trademarks of Digital Networks North America.

FireBall and Physital are trademarks of Escient®.

Other product names mentioned herein are used for identification purposes only and may be trademarks of their respective companies.

Music recognition technology and related data are provided by Gracenote®. Gracenote is the industry standard in music recognition technology and related content delivery. For more information visit www.gracenote.com.

CD and music-related data from Gracenote, Inc., copyright © 2000-2005 Gracenote.

Gracenote CDDDB® Client Software, copyright 2000-2005 Gracenote. This product and service may practice one or more of the following U.S. Patents: #5,987,525; #6,061,680; #6,154,773, #6,161,132, #6,230,192, #6,230,207, #6,240,459, #6,330,593, and other patents issued or pending.

Gracenote and CDDDB are registered trademarks of Gracenote. The Gracenote logo and logotype, and the "Powered by Gracenote" logo are trademarks of Gracenote.

A large, vertical, stylized logo for Escient, with the word "ESCIENT" written in a tall, condensed, sans-serif font. A registered trademark symbol is at the top right.

FireBall™ DVD-100 User's Manual

WARRANTY INFORMATION

Terms of Coverage - Each Escient branded media management system sold comes with a standard one (1) year warranty. This warranty provides no-charge coverage under normal product usage, for a period of one year from the date of registration and/or purchase (whichever is earlier). This warranty program provides the following key features and benefits:

- Twelve (12) months service, parts and labor.
- Five (5) day turn around time on all standard in-warranty repairs. No charges to the customer other than in-bound shipping charges which are determined by the shipping method. All return shipments will be via Standard Ground Transportation (approximately 5 business days).
- Twelve (12) months of regular hour telephone support (9AM to 7PM EST), Monday through Friday.
- 24-hour email response from the Escient Support Website.
- Software maintenance updates provided via a broadband or dial-up Internet connections.
- Access to 24-hour music and movie databases and entertainment services providing access to thousands of CD and DVD titles and associated information.

What is Covered - The goal of this warranty is to cover operational problems that might arise with your product during normal use. This includes failure to start, improper operation, or intermittent failures. As part of the warranty, Escient will pay for all labor and materials used in the repair of the system. Escient reserves the right to use new or factory refurbished parts in the repair of these in-warranty systems. Escient will also pay for the return shipment of the repaired system via standard ground transportation. At Escient's discretion, the Company will repair or replace any system sent in for repair. Upon repair, the product will be new or like-new in condition and will meet all necessary regulatory requirements.

What is Not Covered - Escient products are sold through Escient approved dealers. A number of items must remain intact in order for Escient to verify and validate this warranty. Additionally, there are several conditions which violate Escient's warranty program. These include:

- The product was not purchased through an approved Escient Dealer.
- Any product, on which the serial numbers has been defaced, modified or removed physically or electronically will not be covered by an Escient warranty.
- Escient will not cover under warranty damage to the product as a result of accident, misuse, abuse, neglect, fire, water, lightning, or other acts of God or nature, improper storage, unauthorized modification, or failure to follow instructions.
- Any type of unauthorized repair or modifications made to the system resulting in damage to the product will not be covered under this warranty.
- Damage caused to the product as a result of improper shipping or installation.
- Any problems related to the use of the product which is not a direct problem with the product.
- Damage caused to the product as a result of improper installation to third party peripherals or products, or incorrect connection to peripheral or products.

- Additionally, Escient does not cover the following items under the terms of its warranty programs:
- Installation or removal charges.
- Cost of initial technical adjustments (setup costs).
- Battery replacement.

Escient's sole liability for any defective product is limited to the repair or replacement of the product at our discretion. Escient shall not be liable for damages to other property caused by defects in this product, damages based upon inconvenience, loss of use of the product, loss of time or data, commercial loss or any other damages, whether real, incidental or consequential.

Escient shall not be liable for damage or loss of data including but not limited to music recorded to storage devices. It is the customer's responsibility to maintain the original media and/or appropriate backup copies within the specific rights of the media's copyright holder.

How to Return a Product - Contact your dealer or Escient's Customer Support group at 800-372-4368.

Please have the following information ready for your dealer or Escient's Customer Support technician:

- Product Serial Number
- Model Number
- Date of Registration or Purchase
- Place of Purchase

Upon reviewing the request for repair under warranty provisions, Escient's Technical Support group will issue a Return Material Authorization (RMA) number. This number is to be attached to the outside of the shipping carton. Additional instructions will be provided by technical support. Please be sure to use original packing carton and internal packing materials to assure proper shipment of the system. Insurance costs are the responsibility of the customer. Most shippers only provide standard coverage for \$100 in cost so please protect yourself by providing additional insurance for the returned product.

Out of Warranty Repair - Escient provides out of warranty repair service on a cost plus labor basis. Minimum charges will apply. Technical support will provide information on this service at the time of the call.

ESCIENT®

FireBall™ DVD/100 User's Manual

ESCIENT PRIVACY POLICY

Escient is committed to providing you with a product that you enjoy and are confident in using, and are committed to providing services in a private and secure environment.

We recognize and respect each individual user's privacy and have created this Privacy Policy to demonstrate our commitment to your privacy.

We want you to be fully informed about the information that we collect, why we collect it, and with whom we share it.

It is our hope that, after reading this notice, you will understand our commitment to privacy and be confident that we will use your information responsibly. By using the Escient FireBall, you are accepting the practices described in this Privacy Policy.

The option to read the Escient Privacy Policy appears on the zip code screen of the Quick Start automatic setup procedure. In addition, you can access the statement at any time by pressing the **SETUP** key and choosing the **GENERAL** menu, and then selecting the **PRIVACY POLICY** option..

CONTACT INFORMATION

Escient may be contacted by using the following information. Once you have worked with your local Escient dealer, we encourage you to contact us if you are in need of any further assistance.

Escient

6640 Intech Blvd. Suite 250

Indianapolis, Indiana 46278

Phone: 800-372-4368 Press "2" for Sales, or "3" for Support

Fax: 317-616-6790

Internet: www.escient.com

Email: support@escient.com

Hours: Monday - Friday 9:00am - 7pm EST

COPYRIGHT

This manual is copyright ©2005 by D&M Holdings and Escient. All rights reserved.

ESCIENT®

FireBall™ DVD/100 User's Manual

TERMS AND DEFINITIONS

Following are terms used throughout this manual:

- **Button** - refers to a graphic item on the display screen.
- **Group** - a collection of similar music titles. Standard genre groups are provided and custom groups can be created by the user.
- **Highlight** - highlighting is used to indicate the user's selection on screen. When the selection moves up, down, left, or right, the highlight moves to the next nearest item. No action is taken (except that more information may be displayed on the screen) until the Select key is pressed.
- **Info Text Area** - the portion of the guide screen used to display information about the highlighted title.
- **Playlist** - a collection of one or more music tracks or songs.
- **Title** - a collection of music tracks commonly referred to as a CD, Album or Playlist.
- **Key** - refers to one of the buttons on your remote or keyboard.
- **MP3** - a compressed digital audio format. MP3 files are smaller than the original CD tracks and sound almost identical.
- **FLAC** - a lossless compressed digital audio format. FLAC files are smaller than the original CD tracks and are bit for bit duplicates of the original.
- **WMA** - a digital audio format from Microsoft which stands for Windows Media Audio.
- **Guide** - a grid or list of information, used to browse your media library.
- **Player** - the screen used to display the currently playing media.

ESSENTIAL[®]

FireBall™ DVDM-100 User's Manual

SETUP

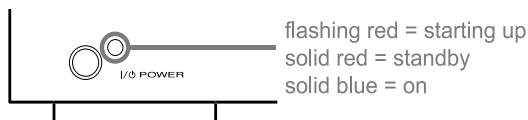
This manual assumes that you followed the printed “Quick Setup Guide” that came with your FireBall. If you have not properly connected your FireBall to your audio/video system, please go back and follow the “Quick Setup Guide” guide before continuing with this User Manual.

POWER STATES

After the FireBall unit is plugged in, the Standby LED located next to the power button will flash red until the startup process is complete.

Please wait. This may take several minutes.

When the Standby LED is solid RED, the FireBall is now in a standby or “sleep” mode. There is no video output when FireBall is in standby mode. Press the Power button (on the front panel or on the remote) once and the video output is displayed on your TV. The unit is now ON and the LED will be solid blue.



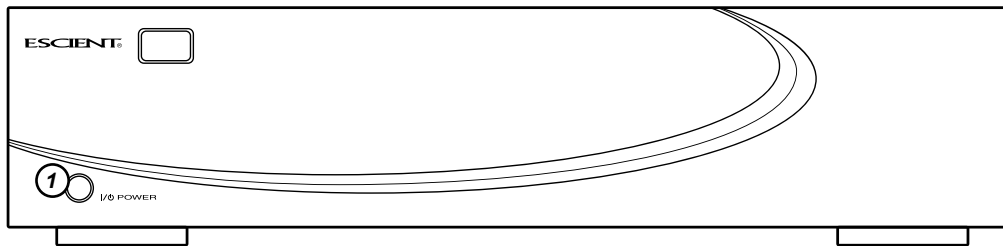
To change from the ON mode back to the standby or “sleep” mode, press the Power button on the front panel or on the remote once. The video output will go blank and the LED will be solid red.

If power is removed from FireBall for any reason, including a power outage or if the unit is unplugged, FireBall will automatically return to the Standby state as soon as power is restored. When FireBall is turned on again, FireBall will return to the same source mode that it was in when power was lost.

To force the FireBall to restart, PRESS and HOLD the Power button on the front of the unit for 4 seconds, and release it when the standby LED starts blinking.

When the Standby LED is RED and FireBall has completed its startup process, press the Power button once to turn on the FireBall.

FRONT PANEL OVERVIEW

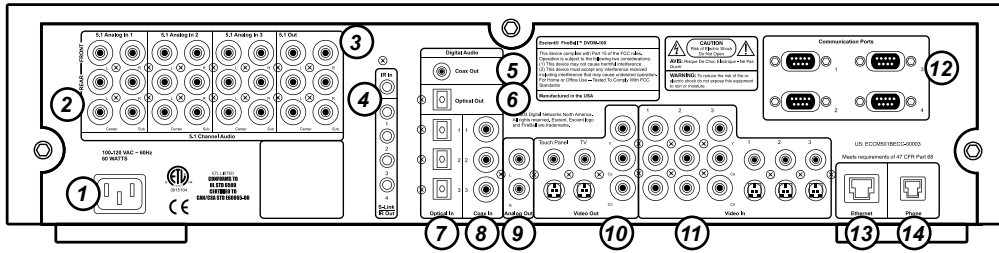


1 - POWER

ESSENTIAL[®]

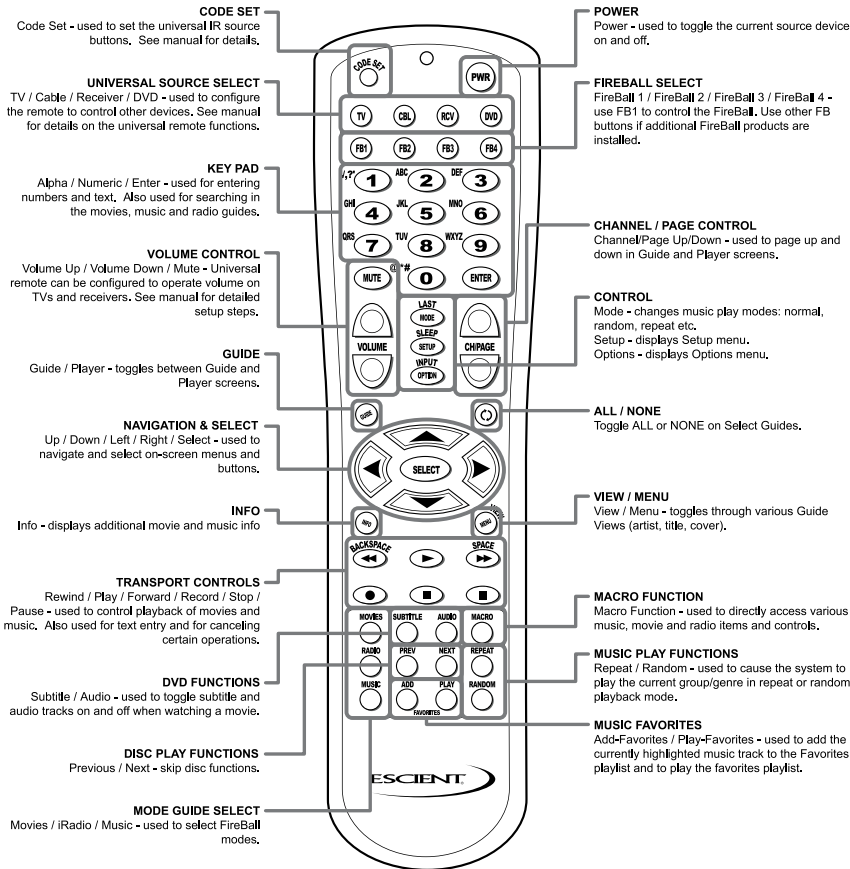
FireBall™ DVD M-100 User's Manual

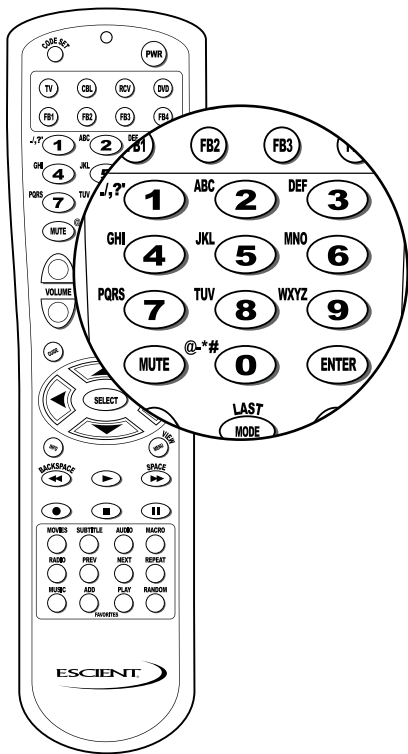
REAR PANEL OVERVIEW



- 1 - POWER
- 2 - 5.1 ANALOG AUDIO IN
- 3 - 5.1 ANALOG AUDIO OUT
- 4 - IR IN AND S-LINK/IR OUT
- 5 - DIGITAL AUDIO COAX OUT
- 6 - DIGITAL AUDIO OPTICAL OUT
- 7 - DIGITAL AUDIO OPTICAL IN
- 8 - DIGITAL AUDIO COAX IN
- 9 - ANALOG AUDIO OUT
- 10 - VIDEO OUT
- 11 - VIDEO IN
- 12 - COMMUNICATION PORTS
- 13 - ETHERNET
- 14 - PHONE

REMOTE OVERVIEW





ENTERING TEXT WITH THE REMOTE CONTROL

The remote control can be used to enter text in all text fields. This text entry capability is provided to allow you to fill out short text fields – such as those that occur in the setup and edit screens. FireBall's wireless keyboard should be used when extended typing is required.

Entering Numeric Entry Mode

In fields where FireBall expects only numeric characters to be entered (such as phone number fields), an indicator will appear on the screen that displays the letters “123” indicating that only numbers can be entered.

Typing Characters with the Remote

The remote control based text entry capability is similar to that provided on standard telephones and cell phones. Each numeric key has characters associated with it that can be accessed by pressing the key one or more times. You have .5 seconds after a key is pressed to enter a second character from the same key. If you press the same key within .5 seconds, the second character associated with that key replaces the initial character. If you do not press the same key within .5 seconds, the text cursor moves to the next location so that the same key can be pressed again to enter a second character.

The “2”, “3”, “4”, “5”, “6”, and “8” keys each support three letters and one number and can be pressed from one to seven times to display upper case, lower case, and numeric characters. The “7” and “9” keys both support four letters and one number and can be pressed from one to nine times. The “1” and “0” keys support all of the special characters and will cycle through each character for every key press.

The text characters follow the same convention used by a standard telephone – except in the case of the “1” and “0” keys which contain additional characters.

When entering characters at the beginning of a field or characters that follow a space, FireBall assumes that upper case characters are preferred. Therefore, characters are entered in the following cycle – uppercase, lowercase, and numeric. For example, the first key press enters an uppercase letter corresponding to the first letter associated with the key. Pressing the “2” key once displays an “A” in the text field, pressing the “2” key twice displays a “B”, pressing it again will

display a “C”. The fourth key press displays a lower case “a”, the fifth key press displays a lower case “b”, and the sixth key press displays a lower case “c”. Lastly, pressing the “2” key a seventh time displays the number “2”.

When entering the second character in a text field or the second character following a space, FireBall assumes that lower case is preferred and the character entry cycles in the following pattern – lowercase, uppercase, and numeric.

The following text entry table describes the sequence of characters that appear when specific keys are pressed on the remote:

Key	Alpha Mode 1 st character or 1 st character after a space	Alpha Mode 2 nd character or 2 nd character after a space
1	1. / , ? ' : ; & ~ !	1. / , ? ' : ; & ~ !
2	ABCabc2	abcABC2
3	DEFdef3	defDEF3
4	GHIghi4	ghiGHI4
5	JKLjkl5	jkJKL5
6	MNOmno6	mnoMNO6
7	PQRSpqrs7	pqrsPQRS7
8	TUVtuv8	tuvTUV8
9	WXYZwxyz9	wxyzWXYZ9
0	0@_ - * # [] () +=	0@_ - * # [] () +=

CONNECTING EXTERNAL DISC CHANGERS

Supported External Changers

The following changers are currently supported. This list may change from time to time as new changers are released by third party manufacturers. Please check the Escient web site for a list of any new supported changers.

- Sony DVP-CX777ES CD/DVD changer
- Kenwood DV-5900M and DV-5050M CD/DVD Changers
- Sony CD Changers (CDP-CX 200, 300, 400 series with S-Link support)

*Note: FireBall will support up to three connected changers. **All changers must be the same brand and type.** You can not mix DVD and CD changers. When connecting the changers, the first changer should be connected to video in 1, digital audio in 1, 5.1 analog in 1, and RS232 1. The second changer to all #2 connectors, and the third to all #3 connectors.*

ESCIENT®

FireBall™ DVDM-100 User's Manual

Connecting Sony DVP-CX777ES CD/DVD Changers

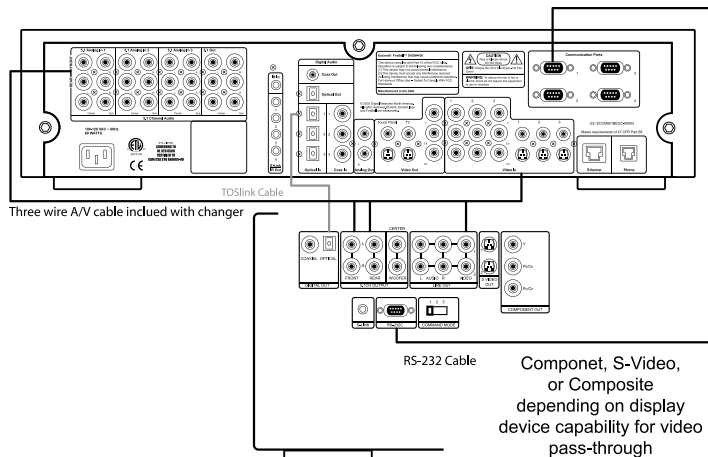
FireBall requires that you connect each changer to the back panel using audio and control cables.

Follow these steps to connect your Sony CD/DVD changers to your FireBall:

1. An RS-232 serial null modem cable with female DB-9 connectors on each end is required for connecting a Sony CD/DVD Changer.
2. Connect one end of the RS-232 serial cable into Communication Port number 1, on the back of your FireBall.
3. Connect the other end of the RS-232 serial cable into the "RS-232C" port on the back of your changer.
4. Locate the stereo RCA audio patch cable that came with your changer.
5. Connect one end of the RCA audio cable into the Analog In jacks number 1 on the back of your FireBall
6. Connect the other end of the RCA audio cable into the Analog Line Out jacks on the back of your changer.

- If you have more than one changer, repeat these steps to connect the additional changers to communications ports and audio jacks 2 and 3 respectively.
- For the best audio quality, you should also connect digital optical or coax audio cables (not included) between your changers and FireBall.
- For the best video quality, you should also connect component video cables (not included) between your changers and FireBall.

Note: Control Cable Pin-Outs and Requirements. FireBall uses a standard null modem cable to connect between it's RS-232 COM ports and external changers and control systems. Cables must be 25 feet or less in length.



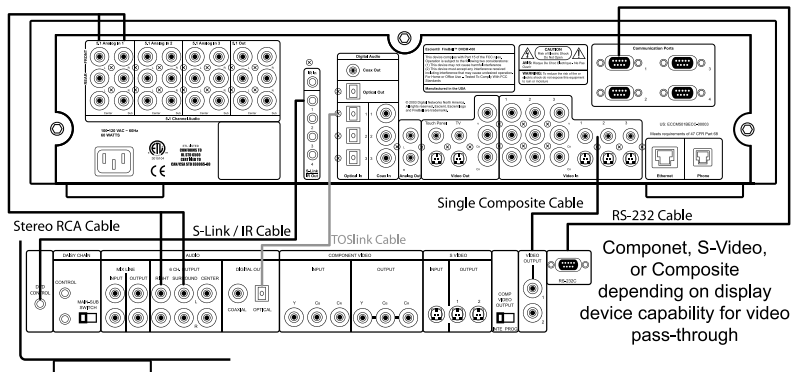
Connecting Kenwood CD/DVD Changers

FireBall requires that you connect each changer to the back panel using audio and control cables.

Follow these steps to connect your Kenwood DVD/CD changers to your FireBall:

1. Locate the RS-232 serial cable that came with your Kenwood changer. This is the black cable with female DB-9 connectors on each end.
2. Connect one end of the RS-232 serial cable into Communication Port number 1, on the back of your FireBall.
3. Connect the other end of the RS-232 serial cable into the "RS-232C" port on the back of your changer.
4. Locate the stereo RCA audio patch cable that came with your changer.
5. Connect one end of the RCA audio cable into the Analog In jacks number 1 on the back of your FireBall
6. Connect the other end of the RCA audio cable into the Analog Line Out jacks on the back of your changer.

- If you have more than one changer, repeat these steps to connect the additional changers to communications ports and audio jacks 2 and 3 respectively.
- For the best audio quality, you should also connect digital optical audio or coax cables (not included) between your changers and FireBall.
- For the best video quality, you should also connect component video cables (not included) between your changers and FireBall.
- To control power on and power off for the Kenwood changer you must connect the included 1/8" male to male cable between the "S-Link/IR Out" jack on the FireBall and the "DVD CONTROL" jack on the Kenwood changer.



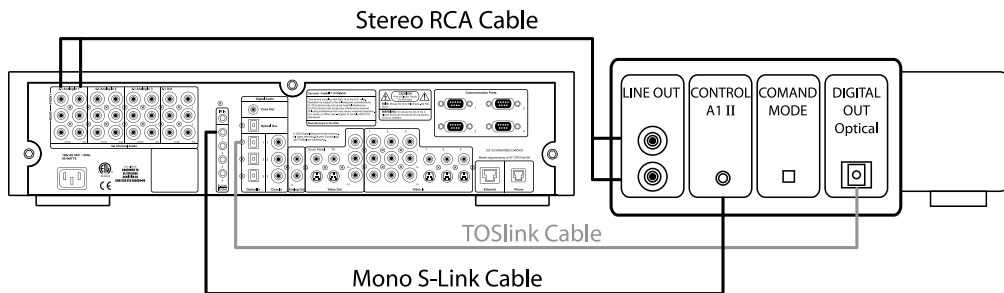
Connecting Sony CD Changers

FireBall requires that you connect each changer to the back panel using audio and control cables.

Follow these steps to connect your Sony CD changers to your FireBall:

1. Locate the included S-Link cable. This is the 10' black cable with 1/8" male plugs on each end.
2. Connect one end of the S-Link cable into the S-Link/IR Out jack number 1 on the back of your FireBall.
3. Connect the other end of the S-Link cable into the Control A1 jack on the back of your changer.
4. Locate the stereo RCA audio patch cable that came with your changer.
5. Connect one end of the RCA audio cable into the Analog In jacks number 1 on the back of your FireBall
6. Connect the other end of the RCA audio cable into the Analog Line Out jacks on the back of your changer.
7. If your changers has a "Command Mode" switch on the rear panel, make sure the is set to 1 for all changers. If no rear switch, use the changers menu to set it to CD1 for all changers.

- If you have more than one changer, repeat these steps to connect the additional changers to S-Link and audio jacks 2 and 3 respectively.
- For the best audio quality, you should also connect digital optical or coax audio cables (not included) between your changers and FireBall.



LOADING DVD MOVIE DISCS INTO CHANGERS

Insert DVDs into your changers, following the changer manufacturer's instructions and close the changer door. Quick Lookup will automatically start in a few seconds. If the Quick Lookup process does not automatically start, then manually start the Lookup using the steps described below.

The disc information that FireBall displays on your TV screen is NOT included on the original CDs that you recorded or CDs/DVDs loaded into your changers. The artist name, album name, and track list are provided by the Gracenote® Music Recognition Service. The album cover, movie title, movie info, and movie cover art are provided by the Escient service. This information is downloaded from the Escients servers to your FireBall using your Internet connection. This process is referred to as "Looking up Disc Information".





Automatically Getting Disc Information

Once your changers are connected to FireBall and loaded with CDs/DVDs, all you have to do is close the changer door and in a few seconds FireBall will begin looking up the disc information from each disc, in each changer.

Quick Lookup checks each previously empty slot in the changers to see if any new discs were added, and then checks each previously occupied slot in the changer to see if any discs were removed.

One by one, the Table of Contents is read from each CD/DVD and compared to the local music database, Escient's MovieDB™ service, or Gracenote CDDB® using your Internet connection, as FireBall builds your Music/Movies Library. As each disc is accessed and looked up, the Quick Lookup screen is updated to display the disc's information and cover art. When all of the discs are looked up, the Guide screen will be displayed.

You can manually run Quick Lookup at any time by following these steps:

- 1. Press the SETUP key on the remote to display the Setup menu.**
- 2. Select the CHANGER MANAGEMENT menu.**
- 3. Select the QUICK LOOKUP menu.**
- 4. FireBall will perform a Quick Lookup for each new disc.**

WARNING: Quick Lookup checks for newly added and removed CDs each time it runs. Do not remove CDs and replace new CDs into the same changer slots without running Quick Lookup in-between, or FireBall will not know that these slots have changed.

If you want to reuse the same slots, first remove your CDs, let Quick Lookup run, then add new CDs to the same slots.



Getting Disc Information for a Range of Discs

If you want to lookup the disc information for a specific range of slots in a changer, you can use the Lookup Range feature.

Follow these steps to lookup a range of changer slots:

1. Press the SETUP key on the remote to display the Setup menu.
2. Select the CHANGER MANAGEMENT menu.
3. Select the LOOKUP RANGE menu.
4. Enter a valid range of slots to lookup. If you have more than 1 changer, select which changer you want to use.
5. Select the CONTINUE button.
6. The Lookup Range screen displays the progress and results for each disc in the selected range.





Getting Disc Information for All Discs

If you want to lookup the disc information for all discs in all changers, you can use the Lookup All feature.

Follow these steps to lookup all discs in all changers:

1. Press the SETUP key on the remote to display the Setup menu.
2. Select the CHANGER MANAGEMENT menu.
3. Select the LOOKUP ALL menu.
4. The Lookup All screen displays the progress and results as each disc in each changer is looked up.



ADDITIONAL CONNECTION AND HOOKUP INFORMATION

DIGITAL AUDIO INPUTS

The FireBall defaults to the optical inputs for changer audio. If you are using the coax inputs it is necessary to manually change the digital inputs from optical to coax using the Setup / Audio / Digital Input Preferences screen.

AUDIO OUTPUTS

The optical, coax, and analog audio outputs are all active when playing media from the internal hard drive or Internet Radio. Both digital and analog connections must be made from the changer to the FireBall for the FireBall to output both digital and analog outputs.

This table shows which audio outputs are active for each type of audio source.

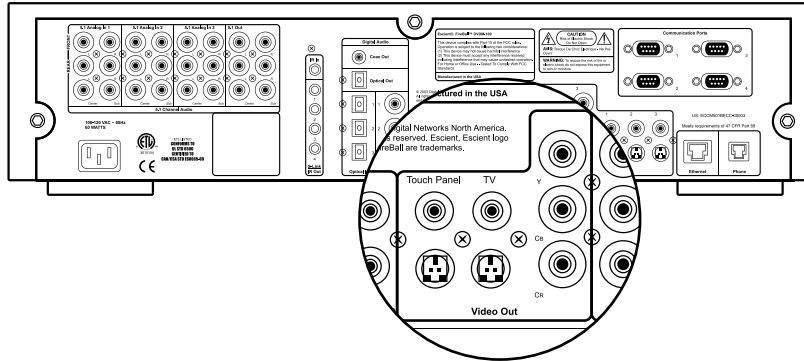
Audio Source	Analog Out	Digital Optical Out	Digital Coax Out
Changer Analog	YES		
Changer Optical		YES	YES
Changer Coax		YES	YES
Internet Radio	YES	YES	YES

For example, connecting only the analog audio outputs of the changer to the FireBall will not provide digital audio on the digital outputs of the FireBall.

VIDEO OUTPUTS

FireBall has several video output formats and connectors including:

- 2 S-Video
- 2 Composite Video
- 1 Component Video (480i interlaced standard definition)



All video outputs are active at the same time, so you can use as many as you like without causing signal degradation.

The Component Video output will provide the best possible video quality for the FireBall User Interface, but will require that your video system has an available component input.

One of the S-Video outputs is typically used for the optional Escient ETP-1500 touch panel to provide the user interface directly on the touch panel. The other S-Video output can be used if the installation has an available S-Video input or for a distributed multi-room installation.

The two composite outputs are typically used for an a/v distribution system, such as the Xantech AV-61 or the Niles ZR-4630/8630 distribution systems.

RS-232 CONNECTIONS

External disc changers are controlled via two-way serial protocols using RS-232 serial cables. You should use COM ports 1,2, and 3 for each external disc changer.

COM port 4 is to be used for connecting an Escient ETP-1500 wired touch panel, external modem or to interface with a third party control system such as AMX or Crestron.

If you are using both an Escient ETP-1500 touch panel and an external modem, connect the Escient ETP-1500 to COM port 3 and use COM port 4 for the external modem.

Note: You should use the Ethernet control system for controlling FireBall from a third party control system whenever possible. Using the Ethernet control system frees up COM port 4 for other purposes, allows much longer distances between FireBall and the control system, and provides a much faster path for data transfer.

INTERNAL MODEM CONNECTIONS

Use of the internal modem for connecting to the Gracenote and Escient disc lookup services should only be used if a broadband connection is not available.

IR CONNECTIONS

The direct IR input jack on the back panel of the FireBall is for controlling FireBall from a wired IR distribution system such as a Xantech system. This connection must be an IR signal with a 36kHz carrier using an 1/8" mono or stereo connector.

The IR input jack provides 12V power. This means that you can directly connect a 12V IR receiver (like the Xantech series 291 units) to the FireBall using a 1/8" stereo connector.

ESCIENT®

FireBall™ DVD-100 User's Manual

ETHERNET CONNECTIONS

The Ethernet jack on the back panel of the FireBall accepts any standard twisted pair CAT5 Ethernet cable. If you are connecting FireBall to a home network, you typically connect a standard Ethernet cable from your Ethernet router or hub to the FireBall.

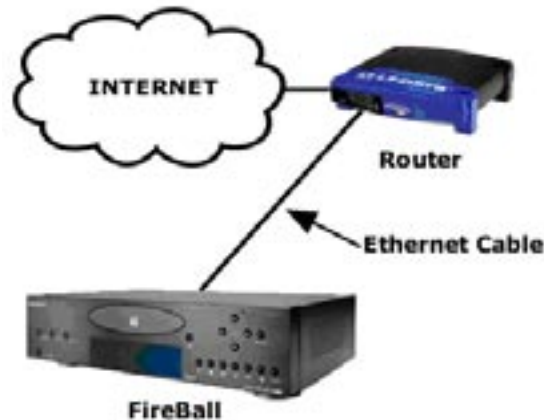
There are different grades, or categories, of twisted-pair cabling. Category 5 is the most reliable and widely compatible, and is highly recommended. It runs easily with 10Mbps networks, and is required for 100Mbps networks. You can buy Category 5 cabling that is pre-made, or you can cut & crimp your own.

Category 5 cables can be purchased or crimped as either straight-through or crossed. A Category 5 cable has 8 thin, color-coded wires inside that run from one end of the cable to the other. Only wires 1, 2, 3, and 6 are used by Ethernet networks for communication. Although only four wires are used, if the cable has 8 wires, all the wires have to be connected in both jacks.

Straight-through cables are used for connecting computers to a hub. Crossed cables are used for connecting a hub to another hub (there is an exception: some hubs have a built-in uplink port that is crossed internally, which allows you to uplink hubs together with a straight cable instead).

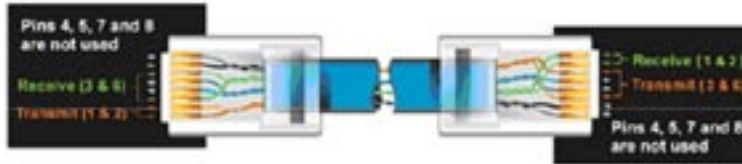
In a straight-through cable, wires 1, 2, 3, and 6 at one end of the cable are also wires 1, 2, 3, and 6 at the other end. In a crossed cable, the order of the wires change from one end to the other: wire 1 becomes 3, and 2 becomes 6.

To figure out which wire is wire number 1, hold the cable so that the end of the plastic RJ-45 tip (the part that goes into a wall jack first) is facing away from you. Flip the clip so that the copper side faces up (the springy clip will now be parallel to the floor). When looking down on the coppers, wire 1 will be on the far left.



CAT5 cabling should not exceed 100 meters. The following drawing depicts the typical wiring scheme for CAT5.

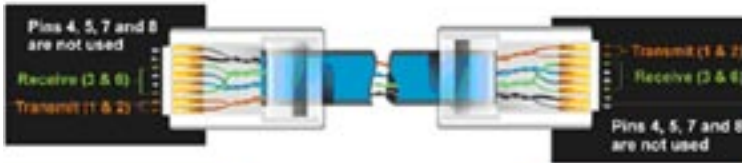
For more information about wiring an Ethernet network, please refer to the Linksys web site (www.linksys.com).



Pin number	Wire Color
Pin 1	Orange/White
Pin 2	Orange
Pin 3	Green/White
Pin 4	Blue
Pin 5	Blue/White
Pin 6	Green
Pin 7	Brown/White
Pin 8	Brown

Crossed-Over	
Wire	Becomes
1	3
2	6
3	1
6	2

Pin number	Wire Color
Pin 1	Green/White
Pin 2	Green
Pin 3	Orange/White
Pin 4	Blue
Pin 5	Blue/White
Pin 6	Orange
Pin 7	Brown/White
Pin 8	Brown



Pin number	Wire Color
Pin 1	Orange/White
Pin 2	Orange
Pin 3	Green/White
Pin 4	Blue
Pin 5	Blue/White
Pin 6	Green
Pin 7	Brown/White
Pin 8	Brown

Straight-Through	
Wire	Becomes
1	1
2	2
3	3
6	6

Pin number	Wire Color
Pin 1	Orange/White
Pin 2	Orange
Pin 3	Green/White
Pin 4	Blue
Pin 5	Blue/White
Pin 6	Green
Pin 7	Brown/White
Pin 8	Brown

EXTERNAL CHANGER CONNECTIONS

There are a few general rules to follow when connecting changers to your FireBall...

Changer Types

- Changers from different Manufacturers can not be mixed
- Sony CD and DVD/CD changers can not be mixed
- Different models of Sony CD changers may be mixed
- Different models of Kenwood DVD changers may be mixed

Control Connections

- Changer 1 should be connected to COM port 1 or S-Link port 1
- Changer 2 should be connected to COM port 2 or S-Link port 2
- Changer 3 should be connected to COM port 3 or S-Link port 3

Digital Audio Connections

- Changer 1 should be connected to Optical or Coax Digital in 1
- Changer 2 should be connected to Optical or Coax Digital in 2
- Changer 3 should be connected to Optical or Coax Digital in 3

Analog Audio Connections

- Changer 1 should be connected to Analog Audio in 1
- Changer 2 should be connected to Analog Audio in 2
- Changer 3 should be connected to Analog Audio in 3

Sony CD Mega Changer Hookup

- Up to three Sony 200, 300 or 400 disc changers may be connected via S-Link cables (1/8" mono or stereo mini)
- S-link cable must 15' or less
- All audio outputs from changers are connected to the E2 (do not daisy chain)
- Optical cables are required for digital audio connections to the FireBall (Sony CD Mega Changers do not support Coax digital outputs)
- The analog audio connection is required when recording from external changers
- Set each changer to address CD1
- Set 300 and 400 disc changers to Control A1-II
- Changers must be in Continuous and All Disc modes

ESCIENT®

FireBall™ DVDM-100 User's Manual

Sony DVD/CD Changer Hookup

- Up to three Sony DVP-CX777ES 400 disc changers may be connected via individual RS-232 cables.
- An RS-232 cable is standard a DB9 null modem cable (not included with the changer)
- All audio outputs from changers should be connected to the FireBall
- The analog audio connection is required when recording from external changers
- Set each changer to address Command Mode 1.

Kenwood DVD/CD Changer Hookup

- Up to three Kenwood DV-5900 or DV-5050 400 disc changers may be connected via individual RS232 cables (do not daisy chain)
- Connect a 1/8" mono or stereo mini connector from the DVD Control jack on each changer to the corresponding S-Link/IR Input jack on the back of the FireBall
- An RS-232 cable is standard a DB9 null modem cable (not included with the changer)
- All audio outputs from changers should be connected to the FireBall (do not daisy chain)
- The analog audio connection is required when recording from external changers
- Set each changer to address MAIN.
- Only CDs in Kenwood changer will appear in Fireball Music Guide.

ESCIENT®

FireBall™ DVDM-100 User's Manual



REGISTRATION

Registering your FireBall is accomplished automatically when you go through the Quick Start process described in the User's Manual. Registration includes properly configuring your FireBall for Internet access and then connecting to the Escient servers to register your serial number and download the latest Internet Radio stations.

If you experience difficulty completing the registration process in Quick Start, follow these guidelines to make sure you have all of the required information and that you can make the proper connection to your Internet Service Provider and the Escient Servers.

TESTING A BROADBAND CONNECTION

1. **Check the Ethernet Network Link - The green LED next to the FireBall's back panel Ethernet jack should be on when properly connected to an Ethernet network.**
2. **From the Ethernet Connection Quick Start screen, select the "perform test" button. This will start the Ethernet Connection test which will test the following network settings:**
 - a. **The ethernet link to your router or hub.**
 - b. **The DHCP addressing if you selected Dynamic IP Addressing.**
 - c. **The connection to your default Gateway (your route to the Internet).**
 - d. **The connection between your router and the Escient server.**

If any of these tests fail, check your ethernet wiring with the proper test equipment, make sure your router is properly configured as a DHCP router, and that you can access the internet using the same network connection using a PC.

Check with your ISP or network administrator if you need assistance determining whether or not you should use DHCP IP addressing. If you are going to use a static IP address, it must be in the proper range assigned to your subnet. Again, check with your ISP or network administrator before using a static IP address.



TESTING A DIALUP CONNECTION

- An external Hayes compatible serial modem is required.
 - An analog phone line is required. Multiplexed digital phone lines are not supported.
 - An existing Internet Service Provider (ISP) account is also required – or you can sign up for a new AOL account by following the on-screen instructions.
1. Check the phone line connection – using a standard phone, make sure there is a dial tone on the line.
 2. Make sure you have a valid dialup account and password. The username, password, and dialup access numbers should be obtained from your ISP. The larger ISPs will have local phone numbers for most areas in the US.
 3. Verify that the dialup account and password are valid by testing them on a PC connected to the same external modem. This will tell you if the account settings and modem are properly configured.
 4. The QuickStart Dialing Preferences screen allows you to set the preferences for your current location.
 - a. Most calling methods these days will use “tone” or touch tone instead of pulse dialing.
 - b. Enter a prefix if you have to dial ‘9’ or some other number to access an outside line when using your phone system.
 - c. If your phone line has Call Waiting service, select the prefix to disable it from the “Disable Call Waiting” spin control. Typically, this will be *70, in the US.
 - d. If you have voice mail service from your phone company that provides a beeping signal just before the dial tone is heard on your line, change “ignore dialtone” to YES. This will ignore the beeping signal which may prohibit some modems from dialing out when you have messages waiting.

6. Once you have verified all of the Dialing Preferences, you should test the dialup modem connection to the Escent servers. From the Dialing Preferences Quick Start screen, select the “Test Connection” button. This will start the Dialup Modem Test which will test the following network settings:

- a. Phone line test will check that the modem is connected to a live phone line which provides a dial tone.**
- b. The access number to the ISP using the first access number.**
- c. The connection to the ISP using the negotiated protocols of your particular modem.**
- d. The login and password for the user’s account.**
- e. The connection to the Escent servers.**

If any of these tests fail, check the phone line wiring with the proper test equipment. Using the same ISP, account information, and cables, test that you can access the internet using a standard PC.

Static IP Addressing is not allowed with a dialup internet connection. Your ISP will supply a dynamic IP address once the connection is established and the user’s account has been authenticated.

ESCENT®

FireBall™ DVD-100 User's Manual

WATCHING DVD MOVIES

BROWSING YOUR MOVIE LIBRARY

Now that you have your DVD movies loaded into your changers and the movie information has been acquired from the Escient MovieDB using the Quick Lookup feature, it's time to see what's in your collection using the Movies Guide.

The **Movies Guide** displays a scrolling list of all your Movies. Using the remote control, you can navigate up and down the list. As each Title is highlighted, you will notice that the Information Area and Cover Art changes to reflect the currently highlighted movie title.

PLAYING THE CURRENT MOVIE

Playing the currently highlighted Movie is the same as playing a DVD in a standalone DVD player. Simply press the **PLAY** key on the remote control and the changer will load the movie and begin to play it.

Once you select the movie to play, the TV screen will change to display the selected movie and hide the FireBall user interface.





SELECTING A DIFFERENT MOVIE

While a movie is playing, you can press the **GUIDE** key on the remote control to display the Movies Guide. The current movie is paused when you switch over to the Guide. Press the **GUIDE** key again to toggle back to the full screen movie and pickup where you left off.

Movie Info

View detailed information for the currently highlighted movie by pressing the **Info** button on the remote.



CHANGING THE GUIDE VIEW

The Movies Guide provides you with two different ways to view the contents of your DVD Movie Library. There are two Views that you can switch between using the **MENU/VIEW** key on the remote control:

- View By Title
- View By Cover

View By Title

View By Title will order the list of DVD Titles alphabetically from A to Z, according to the Movie Title.



View By Cover

View By Cover displays a graphical 4x2 grid of DVD cover art, sorted alphabetically from A to Z, according to the Movie Title.

VIEWING BY GENRE

In addition to the current Guide View, the Movies Guide automatically organizes your DVDs into default “Genres” also called “Groups”. The Group Bar displays a horizontal scrolling list of Genres corresponding to the movies in your library. Five Genres or Groups are visible at one time. The “All” genre is the default, which displays all Titles in your Movie Library.



LISTENING TO MUSIC

BROWSING YOUR MUSIC LIBRARY

If you have CDs loaded into your external changers or if you have a FireBall Music server on the same network as your DVD/M, the Music Guide is used to access your entire music collection. The **Music Guide** allows you to browse, locate, and play all of your music in one easy to use on-screen guide.

The **Music Guide** displays a scrolling list of all your Music Titles. Using the remote control, you can navigate up and down the list. As each Title is highlighted, you will notice that the Information Area and Cover Art changes to reflect the currently highlighted Title.

SHOW AND HIDE TRACKS

If you press the **SELECT** key on the remote control, you will expand the current Title to reveal a list of the Title's **Tracks**.

Press the **SELECT** key again (when a Title is highlighted) to collapse the current Title and hide the track names.



PLAYING THE CURRENT TITLE

Playing the currently highlighted Title is the same as playing a CD in a conventional CD player. Simply **press the PLAY key** on the remote control and it begins to play from track 1.

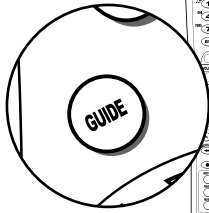
Note: If you press SELECT with a Track highlighted, you will start playback from the selected Track.

You'll notice that a new screen appears with a list of the songs (or tracks) on the current Title, this is the **Music Player** screen. The Music Player displays the artist name, album name, album cover art, and track list for the current Title.

SELECTING A DIFFERENT SONG

In the Music Player you can navigate up and down the track list using the remote control. Highlight a different song and press **SELECT** to play the song.





CHANGING THE GUIDE VIEW

The GUIDE button on the remote control is used to switch between the Music Guide and Music Player screens. When you are viewing the Music Player screen, press the GUIDE button to return to the Music Guide.

The Music Guide provides you with several ways to view the contents of your Music Library. One of the easiest ways to browse and sort your Music Library is by using the Music “Views”. There are two Views that you can switch between using the “MENU/VIEW” key on the remote control:

- View By Artist
- View By Cover



View By Artist

View By Artist is the default View and displays your Music Library alphabetically from A to Z using according to the Artist Name then the Album Name.



View By Cover

View By Cover displays a graphical 4x2 grid of album cover art, sorted alphabetically from A to Z, according to the Artist Name then Album Name.



CHANGING THE CURRENT PLAY MODE

The default Play Mode will play the current Title from Track 1 to the last track in order, then stop. If you want to change the order of how tracks are played, there are six different Play Modes to choose from:

- **Normal** - play each track in order in the current Title, then stop.
- **Repeat Track** - repeat the same track over and over until you press stop.
- **Repeat Title** - play each track in the current Title in order then repeat the entire disc until you press stop.
- **Repeat Group** - play each track in each title in the current group and then repeat them until you press stop.
- **Random Title** - randomly select and play a track from within the current title. Continue until you press stop or every track in the current title is played.
- **Random Group** - randomly select and play a track from any title in the current group. Continue until you press stop or every track in the current group is played

To change the current Play Mode, press the MODE key on the remote control. Each press of the MODE key will switch to the next Play Mode. Stop pressing the MODE key when you see the desired Play Mode appear on the screen. You can also directly select a Play Mode using the OPTIONS key and the Play Mode menu item.

VIEWING BY GENRE

In addition to the current Guide View, the Music Guide automatically organizes your Music into default “Genres” also called “Groups”. The Group Bar displays a horizontal scrolling list of Genres corresponding to the music in your library. Five Genres or Groups are visible at one time. The “All” genre is the default, which displays all Titles in your Music Library.

Using the **LEFT** and **RIGHT** arrow keys on the remote, you can select a different Genre. Notice that the list of Titles updates to show only Titles in the selected Genre.

- Scroll all the way to the left to return to the All Genre.
- Genre list will scroll to the right to reveal more Genres.
- Refer to the section “Managing Your Media” for instructions on creating your own groups from favorite music titles



LISTENING TO INTERNET RADIO

BROWSING INTERNET RADIO STATIONS

The **Radio Guide** displays a scrolling list of Internet Radio Stations. Using the remote control, you can navigate up and down the list. As each Station is highlighted, you will notice that the Information Area and Cover Art changes to reflect the currently highlighted Station.

- Press the iRADIO key on the remote control to display the Radio Guide.
- Press the MUSIC key to return to the Music Guide

Note: Internet Radio is only available if you have a Broadband Internet connection.



ESCIENT®

FireBall™ DVD-100 User's Manual

PLAYING THE CURRENT STATION

Playing the currently highlighted Radio Station is the same as selecting and playing an off air radio station on a typical audio receiver. Simply **press the SELECT key** on the remote control and the currently highlighted station will be located, buffered, and then played.

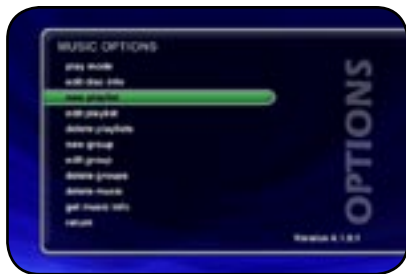
You'll notice that a new screen appears displaying information about the selected station. This is the **Radio Player** screen. The Radio Player displays the station name, location, genre, genre cover art, and status about the current Internet Radio station stream.

- Playing Internet Radio requires a valid Internet connection.
- Although some stations will work over a Dialup Internet Connection, a broadband Internet connection is recommended.
- Due to the dynamic nature of the Internet, you may experience periodic audio drop-outs which could be due to many factors such as Internet access problems, busy networks, etc...
- Internet Radio Stations are not hosted by Escent and may not be available at all times. You can update your Internet Radio Stations list by running Tune Stations. Please refer to the "Managing Your Media" section for more information.
- Cover art, song name, and artist name are displayed only if the information is sent by the Internet Radio Station broadcaster.



ESCENT®

FireBall™ DVD-100 User's Manual



MANAGING YOUR MEDIA

CREATING PLAYLISTS

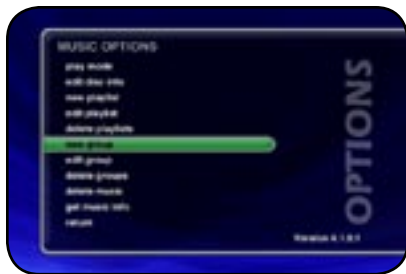
FireBall allows you to organize your favorite songs into custom “Playlists”. A Playlist is simply a group of songs that you choose from your Music Library. Common uses for Playlists are:

- Collections of your favorite songs
- Songs that have a similar tempo or feel (mellow mix)
- Custom albums from one or more of your favorite artists
- Party mixes
- Workout mixes

Follow these steps to create your own custom Playlist:

1. Press the **MUSIC** key to make sure you are in the Music source mode.
2. Press the **OPTIONS** key to display the Music Options Menu
3. Select the **NEW PLAYLIST** menu item.
4. Using the remote control or keyboard, enter a name for your Playlist.
5. Select the **CONTINUE** button on screen to advance to the Edit Playlist Select Guide. The Edit Playlist Select Guide works just like the Music Guide. Navigate up and down to highlight, expand, or collapse music titles.
6. For each song you want to add to the Playlist, highlight the song name and press the **SELECT** key on the remote. A checkmark appears to the right of each selected song indicating that it will be added to the Playlist. Press **SELECT** again to remove the checkmark.
7. When you have selected all of the songs you want to include in the playlist, press the **RECORD** button on the remote control to save the Playlist.

- When you are finished creating your Playlist, the Music Guide is displayed highlighting the newly created Playlist.
- You can play any Playlist the same way you play a music title or CD. Just press the **PLAY** key on the remote control.
- Notice that a Playlist genre is added to the Group Bar. The Playlist genre will always be available as long as you have at least one playlist in your Music Library.



CREATING GROUPS

In addition to Playlists, FireBall allows you to create custom “Groups” of Movies, Music Titles or Radio Stations. User created Groups appear in the Group Bar along with the automatically created Genre Groups and System Groups (All, CDs, Internal, and Playlists). Some uses for custom Group are:

- Group similar movies together.
- Create custom groups of your favorite movies.
- Organize music titles or radio stations into custom genres, like “Funk”, 80’s, “Hits”, etc...
- Group all of the albums for a favorite artists together for quick access.
- Create an easily accessible collection of your favorite albums.

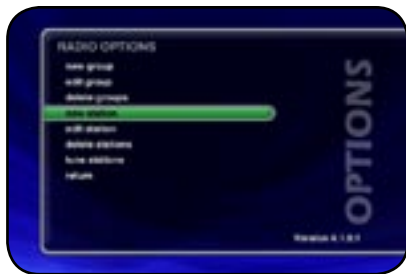


To create a custom Group, follow these steps:

1. Press the MOVIES key to make sure you are in the Movies source mode, MUSIC key to make sure you are in the Music source mode or press the RADIO key if you want to create a custom Radio Group.
2. Press the OPTIONS key to display the Options Menu
3. Select the NEW GROUP menu item.
4. Using the remote control or keyboard, enter a name for your Group.
5. Select the CONTINUE button on screen to advance to the Edit Group Select Guide. The Edit Group Select Guide works just like the Music or Radio Guide.
6. For each Music Title or Radio Station you want to add to the Group, highlight the Title or Station name and press the SELECT key on the remote. A checkmark appears to the right of each selected Title or Station indicating that it will be added to the Group. Press SELECT again to remove the checkmark.
7. When you have selected all of the Titles or Stations you want to include in the group, press the RECORD button on the remote control to save the Group.



- When you are finished creating your Group, the Guide is displayed highlighting the newly created Group.
- Notice that a custom Group is added to the Group Bar along with the System Groups.
- The custom Group will always be sorted alphabetically within the Group Bar and appear to the right of the All and Playlist Groups.



ADDING INTERNET RADIO STATIONS

FireBall comes preloaded with several high quality streaming Internet Radio Stations from around the world, but that may not be enough for you, so FireBall also let's you add your own Internet Radio Stations.

Internet Radio stations must conform to these specifications:

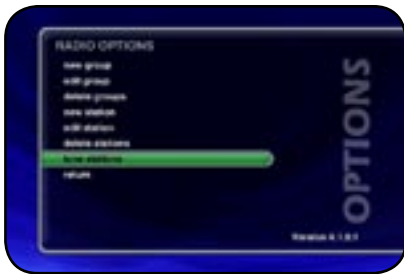
- Windows Media WMA or MPEG II layer 3 streams.
- Windows Media 9 or earlier.

To add your own Internet Radio Stations, you will need to obtain the URL or Internet Link to the stream using your PC.

Assuming you have a valid URL for a station, follow these steps to add your own Internet Radio Station to the Radio Guide:

1. Make sure you are in the Radio source mode by pressing the RADIO key on the remote.
2. Press the OPTIONS key to display the Options Menu
3. Select the NEW STATION menu item.
4. Using the remote or keyboard, enter information for the new station including: station name, location, URL, the bit rate of the stream, the genre, the stream type (MP3 or WMA), and the number of channels (mono or stereo). The default cover art will be set according to which genre you select.
5. Select the SAVE button to save the new station.

- When you are finished creating your new station, the Radio Guide is displayed highlighting the newly created Station.
- You can play the station just like any other Internet Radio station.



UPDATING THE INTERNET RADIO STATIONS LIST

Escient makes every attempt to insure that the preloaded Internet Radio Stations are alive and well, but due to the dynamic nature of the Internet and the third parties who actually serve up these radio streams, sometimes you will not be able to play a station. The “Tune Stations” feature allows you to download a list of the most recent Internet Radio stations from Escient.

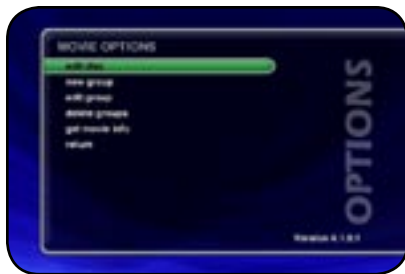
Note: Tune Stations WILL NOT erase any custom stations you may have added, from your Radio Guide. It WILL replace the Escient supplied stations with a fresh new list.

If you want to replace the current Internet Radio Stations with a new list of stations, follow these steps:

- 1. Make sure you are in the Radio source mode by pressing the RADIO key on the remote.**
- 2. Press the OPTIONS key to display the Options Menu**
- 3. Select the TUNE STATIONS menu item.**
- 4. Read the WARNING screen and select OK to proceed.**
- 5. FireBall will Connect to the Escient server and download the latest Internet Radio Stations.**

When you are finished Tuning the Stations, the Radio Guide is displayed showing the new Escient provided Internet Radio Stations and any user added stations.





EDITING MOVIE INFORMATION

FireBall has access to tens of thousands of DVD titles, but you may still encounter a DVD that does not return the correct disc information from the Escient MovieDB™. You can edit the disc information for any DVD Movie Title using the Edit Disc screens.

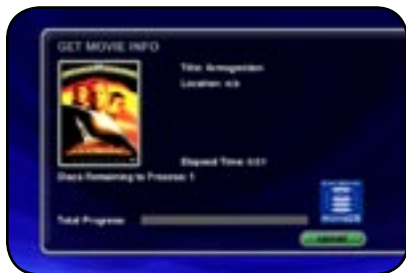
Editing Disc Info

Follow these steps to edit the disc information for the current Movie Title:

1. Highlight the Movie Title you want to edit in the Movies Guide.
2. Press the OPTIONS key on the remote control.
3. Select the EDIT DISC menu item to display the Edit Disc Information screen.
4. Using the remote control or wireless keyboard, change the movie title, cast list, year of release, running time, rating, aspect ration, genre or movie description.
5. Select the SAVE button to save your changes and return to the previous screen.

ESCIENT®

FireBall™ DVD-100 User's Manual



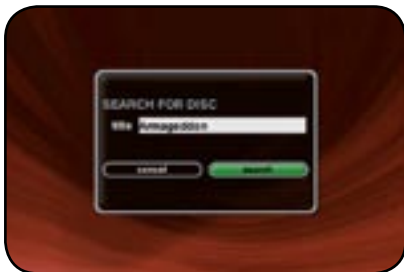
Automatically Lookup Information for This Disc

The "Lookup This Disc" button will initiate a disc lookup for only this disc. FireBall will connect to the Escient MovieDB™ Service to locate and download the disc information.

Follow these steps to lookup information for the current disc:

- 1. Highlight the Music Title you want to edit in the Movies Guide.**
- 2. Press the OPTIONS key on the remote control.**
- 3. Select the EDIT DISC menu item to display the Edit Disc Information screen.**
- 4. Select the LOOKUP THIS DISC BUTTON. The Get Movie Info screen will be displayed as FireBall attempts to lookup the disc information from the Escient MovieDB™ for you.**
- 5. When the lookup is complete, you will return to the Edit Disc Information screen where you can verify or edit the results.**
- 6. Select the SAVE button to save your changes and return to the previous screen**

Selecting the **PREVIOUS** or **NEXT** buttons will save any edits you have made to the current disc and display the information for the previous or next disc.



Searching for Movie Information Manually

Occasionally the MovieDB™ will not return the movie information and cover art. This might happen if the movie is a very new or different release. You can wait a few days and try to Lookup Unknown discs, or you can manually search for the disc information by using the “Search for Movie” feature. This is a powerful tool that allows you to search the Escient MovieDB™ servers for an exact or partial match using the movie title.

Follow these steps to search for a cover:

1. Highlight the Movie Title you want to edit in the Movies Guide.
2. Press the OPTIONS key on the remote control.
3. Select the EDIT DISC menu item to display the Edit Disc Information screen.
4. Select the SEARCH FOR MOVIE button to display the Search for Movie screen.
5. The current Movie Title is entered as the default search string. You can change the Title to modify the search. Note that editing the Title WILL NOT change it in the Movie Library. These edits are ONLY used to search for a movie.
6. Select the SEARCH button to start the search.
7. The Get Movie Info screen will be displayed as FireBall attempts to search for the movie information using the Movie Title you entered.
8. When the search is complete, you will return to the Edit Disc Information screen where you can verify or edit the results.
9. Select the SAVE button to save your changes and return to the previous screen.

Tips for Searching for Movies

The Escient server uses a fuzzy-match algorithm to locate a matching movie using the Movie Title you enter. There are a few tips to try when searching for movies:

- Remove any punctuation marks from the Title
- Remove Disc Numbers from the Titles
- Try different spellings in the Title
- Try removing part of the Title (if it is more than 2 words)

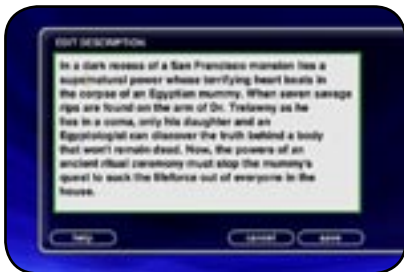


Selecting an Existing Cover

If for some reason you can not download the original cover, you can choose one of the existing covers for the current Title.

Follow these steps to select an existing cover to assign to the current Title:

1. Highlight the Movie Title you want to edit in the Movie Guide.
2. Press the OPTIONS key on the remote control.
3. Select the EDIT DISC` menu item to display the Edit Disc Information screen.
4. Select the SELECT COVER button to display the Select Cover Art screen.
5. Using the arrow and page keys on the remote control, locate the name of the Title corresponding to the cover you wish to use for the current Title. Notice that a preview of the selected cover appears on the right of the list as you highlight each name.
6. Press the SELECT key on the remote control when you have located the cover of your choice.
7. Select the SAVE button to save your selection and return to the previous screen.



Edit Description

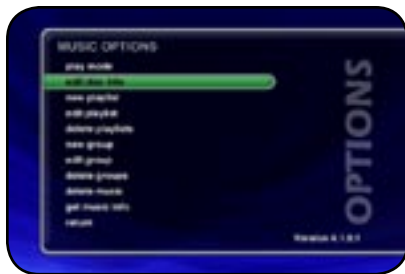
If for some reason you can not download the original description, you can edit it.

Follow these steps to select an existing cover to assign to the current Title:

1. Highlight the Movie Title you want to edit in the Movie Guide.
2. Press the OPTIONS key on the remote control.
3. Select the EDIT DISC menu item to display the Edit Disc Information screen.
4. Select the EDIT DESCRIPTION button to display the Edit Description screen.
5. Using the arrow keys and alpha/numeric buttons edit the description.
6. Press the SELECT key on the remote control when you have edited your movie description.
7. Select the SAVE button to save your selection and return to the previous screen.

ESSENTIAL

FireBall™ DVD/DM-100 User's Manual



EDITING MUSIC INFORMATION

FireBall has access to over 2.5 million CD titles, but you may still encounter a CD that does not return a custom cover or the correct disc information. You can edit the disc information for any Music Title using the Edit Disc and Edit Tracks screens.

Editing Disc Info

Follow these steps to edit the disc information for the current Music Title:

1. Highlight the Music Title you want to edit in the Music Guide.
2. Press the **OPTIONS** key on the remote control.
3. Select the **EDIT DISC INFO** menu item to display the Edit Disc Information screen.
4. Using the remote control or wireless keyboard, change the artist name, album title, label, year of release, or genre.
5. Select the **SAVE** button to save your changes and return to the previous screen.

Selecting the **PREVIOUS** or **NEXT** buttons will save any edits you have made to the current disc and display the information for the previous or next disc.



Editing Track Names

You can also manually edit the Track/Song names of the currently highlighted Title in the Music Guide.

Follow these steps to edit the track information for the current Music Title:

- 1. Highlight the Music Title you want to edit in the Music Guide.**
- 2. Press the OPTIONS key on the remote control.**
- 3. Select the EDIT DISC INFO Info menu item to display the Edit Disc Information screen.**
- 4. Select the EDIT TRACKS button to display the Edit Tracks screen.**
- 5. Using the remote control or wireless keyboard, change the name of each track.**
- 6. Press the SELECT button to advance to the next track.**
- 7. Select the SAVE button to save your changes and return to the previous screen.**

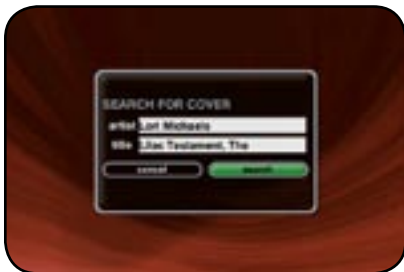


Automatically Lookup Information for This Disc

The “Lookup This Disc” button will initiate a disc lookup for only this disc. FireBall will connect to the Gracenote® Music Recognition Service to locate and download the disc information.

Follow these steps to lookup information for the current disc:

1. Highlight the Music Title you want to edit in the Music Guide.
2. Press the OPTIONS key on the remote control.
3. Select the EDIT DISC INFO menu item to display the Edit Disc Information screen.
4. Select the LOOKUP THIS DISC BUTTON. The Get Music Info screen will be displayed as FireBall attempts to lookup the disc information from the Gracenote® Music Recognition Service for you.
5. When the lookup is complete, you will return to the Edit Disc Information screen where you can verify or edit the results.
6. Select the SAVE button to save your changes and return to the previous screen.



Searching for the Original Cover

Occasionally the wrong cover or the default cover will be displayed for a Music Title. You can manually search for the original cover art by using the “Search for Cover” feature. This is a powerful tool that allows you to search the Escient servers for an exact or partial match using the artist name and/or album name.

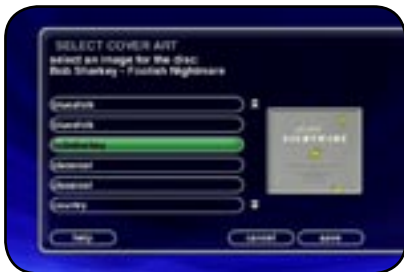
Follow these steps to search for a cover:

1. Highlight the Music Title you want to edit in the Music Guide.
2. Press the OPTIONS key on the remote control.
3. Select the EDIT DISC INFO menu item to display the Edit Disc Information screen.
4. Select the SEARCH FOR COVER button to display the Search for Cover screen.
5. The current Artist Name and Album Title are entered as the default search strings. You can change either one of these to modify the search. Note that editing the Artist Name or Title WILL NOT change them in the Music Library. These edits are ONLY used to search for a new cover.
6. Select the SEARCH button to start the search.
7. The Get Music Info screen will be displayed as FireBall attempts to search for the cover using the Artist Name and Title you entered.
8. When the search is complete, you will return to the Edit Disc Information screen where you can verify or edit the results.
9. Select the SAVE button to save your changes and return to the previous screen.

Tips for Searching for Covers

The Escient server uses a fuzzy-match algorithm to locate a matching cover using the Artist Name and Title you enter. There are a few tips to try when searching for covers:

- Remove any punctuation marks from the Artist Name and Title.
- Remove Disc Numbers from the Titles.
- Try different spellings in the Title.
- Try removing part of the Artist Name (if it is more than 2 words).

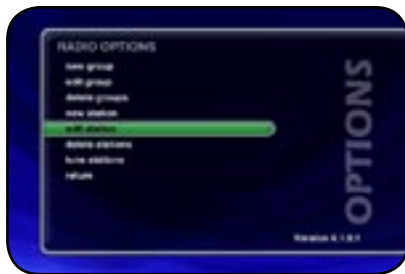


Selecting an Existing Cover

If for some reason you can not download the original cover, you can choose one of the existing covers for the current Title.

Follow these steps to select an existing cover to assign to the current Title:

1. Highlight the Music Title you want to edit in the Music Guide.
2. Press the OPTIONS key on the remote control.
3. Select the EDIT DISC INFO menu item to display the Edit Disc Information screen.
4. Select the SELECT A COVER button to display the Select Cover Art screen.
5. Using the arrow and page keys on the remote control, locate the name of the Title corresponding to the cover you wish to use for the current Title. Notice that a preview of the selected cover appears on the right of the list as you highlight each name.
6. Press the SELECT key on the remote control when you have located the cover of your choice.
7. Select the SAVE button to save your selection and return to the previous screen.

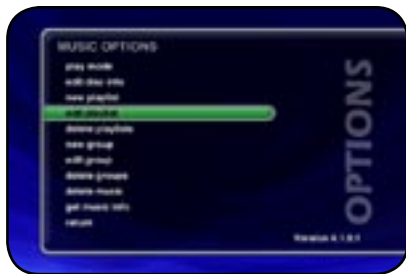


EDITING RADIO INFORMATION

Similar to editing Music Information, you can also Edit the Radio Information.

Follow these steps to edit the station information for the currently highlighted Internet Radio Station:

1. Make sure you are in the Radio source mode by pressing the RADIO key on the remote.
2. Press the OPTIONS key to display the Options Menu
3. Select the EDIT STATION menu item to display the Edit Station screen.
4. Using the remote or keyboard, edit the information for the new station including: station name, location, URL, the bit rate of the stream, the genre, type of stream (MP3 or WMA), and the number of channels (mono or stereo). The cover art will be set according to which genre you select.
5. Select the SAVE button to save the changes.



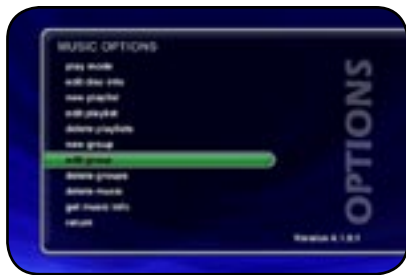
EDITING PLAYLISTS

You can change the name and add or remove tracks from any Playlist you created.

Follow these steps to edit a Playlist:

1. Press the **MUSIC** key to make sure you are in the Music source mode.
2. Highlight the Playlist Name you want to edit. Note: The Playlist group will list all of your Playlists.
3. Press the **OPTIONS** key to display the Music Options Menu
4. Select the Edit Playlist menu item.
5. Using the remote control or keyboard, change the name of your Playlist or select the **CONTINUE** button on screen to keep the current name and advance to the Edit Playlist Select Guide.
6. For each song you want to add to the Playlist, highlight the song name and press the **SELECT** key on the remote. A checkmark appears to the right of each selected song indicating that it will be added to the Playlist.
7. For each song you want to remove from the Playlist, highlight the song name and press the **SELECT** key on the remote. The checkmark to the right of the song will be removed, indicating that the song should be removed from the Playlist.
8. When you have added or removed all of the songs you want to include in the playlist, press the **RECORD** button on the remote control to save the Playlist.

- If you remove all songs from a Playlist, the Playlist is automatically deleted.
- You can not reorder songs within a current Playlist.



EDITING GROUPS

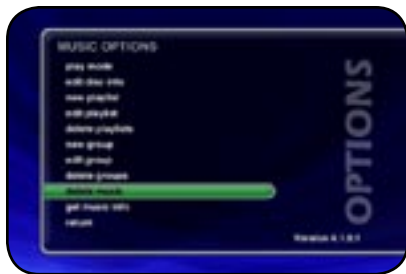
As with Playlists, you can also edit the name of a Group, add Music Titles or Radio Stations to the Group, or remove Music Titles or Radio Stations from the Group.

Follow these steps to edit a Group:

1. Press the **MUSIC** key if you want to edit the Music Groups or press the **RADIO** key if you want to edit the Radio Groups.
2. Highlight the Group you want to edit within the Group Bar.
3. Press the **OPTIONS** key to display the Music Options Menu
4. Select the **Edit Group** menu item.
5. Using the remote control or keyboard, change the name of your Group or select the **CONTINUE** button on screen to keep the current name and advance to the Edit Group Select Guide.
6. For each Music Title or Radio Station you want to add to the Group, highlight the Music Title or Radio Station and press the **SELECT** key on the remote. A checkmark appears to the right of each selected Music Title or Radio Station indicating that it will be added to the Group.
7. For each Music Title or Radio Station you want to remove from the Group, highlight the Music Title or Radio Station and press the **SELECT** key on the remote. The checkmark to the right of the Music Title or Radio Station will be removed, indicating that the Music Title or Radio Station should be removed from the Group.
8. When you have added or removed all of the Music Titles or Radio Stations you want to include in the playlist, press the **RECORD** button on the remote control to save the Group.

You can not edit the System Groups (All, CDs, Internal, or Playlists).

- If you remove all Titles or Stations from a Group, the Group is automatically deleted.
- You can not reorder Titles and Stations within a Group. They are always sorted alphabetically.



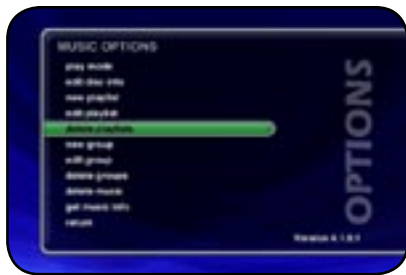
DELETING MUSIC

You can remove any music you have recorded to the FireBall by using the Delete Music feature. You may want to do this if you have filled up your FireBall and you can not record any more music or if you want to remove songs that you just don't listen to.

Follow these steps to delete music from your FireBall:

1. Press the **MUSIC** key to make sure you are in the Music source mode.
2. Press the **OPTIONS** key to display the Options Menu
3. Select the **DELETE MUSIC** menu item to display the Delete Music Info screen.
4. Press the **CONTINUE** button to proceed to the Delete Music Guide.
5. For each Track you want to delete, highlight the Track and press the **SELECT** key on the remote. A checkmark appears to the right of each selected Track indicating that it will be deleted. Press the **SELECT** key again to remove the checkmark. Pressing the **TOGGLE** key on the remote when a Title is highlighted will toggle all or none of the Title's tracks for deletion.
6. When you have selected all of the Titles you want to delete in the group, press the **RECORD** button on the remote control to permanently remove and delete the checked tracks.

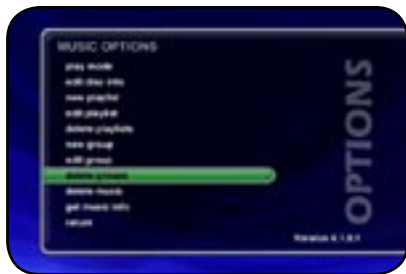
You can not "delete" physical CDs from the Music Library. You must remove the discs from your changers if you want the CDs to be removed from the Music Guide.



DELETING PLAYLISTS

You may delete entire Playlists from the Music Guide. Follow these steps to permanently delete one or more Playlists from the Music Guide:

1. Press the MUSIC key to make sure you are in the Music source mode.
2. Press the OPTIONS key to display the Options Menu
3. Select the DELETE PLAYLISTS menu item to display the Delete Playlists screen.
4. For each Playlist you want to delete, highlight the Playlist and press the SELECT key on the remote. A checkmark appears to the right of each selected Playlist indicating that it will be deleted. Press the SELECT key again to remove the checkmark.
5. When you have selected all of the Playlists you want to delete, select the DELETE button to permanently remove and delete the checked Playlists.



DELETING GROUPS

Deleting Groups from the Group Bar is very similar to deleting Playlists. The contents of the Group (the Music Titles, Movie Titles, or Radio Stations) are not deleted. They are still available in any other Groups they may be assigned to and in the All Group.

Follow these steps to delete Groups.

1. Press the **MUSIC** key if you want to edit the Music Groups or press the **RADIO** key if you want to edit the Radio Groups.
2. Press the **OPTIONS** key to display the Options Menu
3. Select the **DELETE GROUPS** menu item to display the Delete Playlists screen.
4. For each Playlist you want to delete, highlight the Playlist and press the **SELECT** key on the remote. A checkmark appears to the right of each selected Playlist indicating that it will be deleted. Press the **SELECT** key again to remove the checkmark.
5. When you have selected all of the Playlists you want to delete, select the delete button to permanently remove and delete the checked Playlists.
6. You can not delete the System Groups (All, CDs, Internal, or Playlists).



SETTING USER PREFERENCES

User preferences are available to specify global configuration options and preferred system settings. Press the SETUP key on the remote control to display the Setup Menu. Use the navigation keys on the remote control (up, down, left, and right) to highlight and select any menu item.

SETTING THE SCREEN SAVER PREFERENCES

Screen Savers are provided for each source mode. Screen Savers provide two important functions, to prevent a static image from being displayed on the video output device for extended periods of time and to provide useful information to the user when activated.

Follow these steps to set your screen saver preferences:

1. Press the **SETUP** key on the remote to display the Setup menu.
2. Select the **GENERAL** Menu
3. Select the **SCREEN SAVER** Menu
4. Select your Screen Saver Preferences

Activation Idle Time

You can specify the amount of idle time that FireBall will wait before activating the screen saver from 1 to 60 minutes.

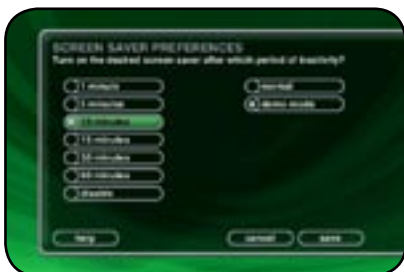
Warning: Some televisions and plasma monitors are more susceptible to screen burn-in than others, therefore, we recommend using a low activation time (like 1 minute) to reduce the risk of burn-in.

Other Modes

Select either the Normal, or Product Demo. The Normal mode displays the current title or station information while the Product Demonstration mode is intended for retail product demos during idle time.

ESSENTIAL[®]

FireBall™ DVDM-100 User's Manual



Retail Demo Mode

FireBall has a Retail Demo Mode for use in retail display environments. The Retail Demo Mode (RDM) is a special screen saver that is activated during idle time. The RDM continuously displays key features and benefits of the FireBall product on the attached TV. Pressing any button on the remote will temporarily disable the RDM and allow the user to demo the product. After the specified idle time, the RDM will reactivate as the screensaver.

Follow these steps to enable the Retail Demo Mode in your FireBall display model:

- 1. Follow the Quick Start instructions to connect and register your demo FireBall.**
- 2. When your FireBall is configured and you see the Music Guide, press the SETUP key on the remote.**
- 3. Select the General menu.**
- 4. Select the Screen Saver menu.**
- 5. Select the Demo Mode option and the number of minutes to wait before displaying the Demo Mode screen saver.**
- 6. Select the Save button.**

- The RDM will be activated whenever the FireBall is idle for the specified period of time.
- Do not set the idle time too high as the possibility of screen burn is increased with certain types of displays, particularly “Plasma” type displays.



SETTING YOUR TIME ZONE

Specify which US time zone your FireBall is located in.

Follow these steps to set your Time Zone:

1. Press the **SETUP** key on the remote to display the Setup menu.
2. Select the **GENERAL** Menu
3. Select the **TIME ZONE** Menu
4. Select your select your Time Zone.

ESCIENT[®]

FireBall™ DVDM-100 User's Manual



CUSTOMIZABLE USER INTERFACE

In addition to the Escient Classic user interface theme, the FireBall allows you to select a custom theme and select your own background images for each Guide, Player, Options, Setup, and Message screens. You can import your own background images into the Backgrounds shared directory using Windows Networking. Images should be 720x480 and saved in either jpg, gif, or png formats.

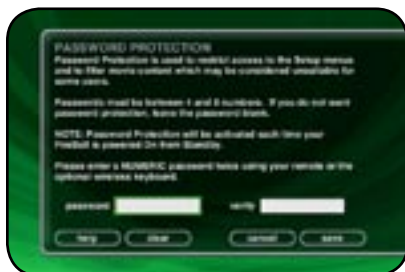
Follow these steps to select a custom background on your FireBall:

1. Press the **SETUP** key on the remote.
2. Select the **General** menu.
3. Select the **User Interface Backgrounds** menu.
4. Select the screen you want to set the background for (**Music Guide, Music Player, Music Option, etc....**)
5. Scroll down the list and highlight an image. A preview will be displayed to the right of the list.
6. Press the **Select** key on the remote to select the desired image.
7. Repeat steps 6 – 8 for each screen you want to customize.
8. Select the **Save** button when you are done to return to the Setup menu.

Note: Some backgrounds look better than others. In general, backgrounds with darker colors and few small details are better.

ESCIENT®

FireBall™ DVDM-100 User's Manual



ENABLING PASSWORD PROTECTION

Optional Password Protection enables you to limit user access to the Setup Menus. This is useful to lockout the ability to change the global user settings and preferences.

Setting a System Password – Follow these steps to setup a new system password:

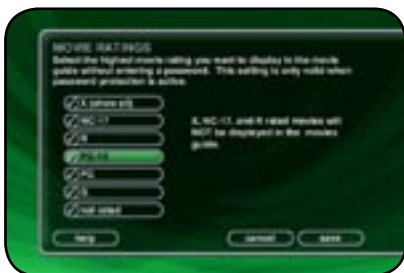
1. Using the remote control, enter a 4 to 8 digit code into the password field.
2. Press the SELECT key to highlight the VERIFY field.
3. Re-enter the same password for verification.
4. Press the SELECT key to highlight the SAVE button.
5. Press SELECT again to save your password and enable Password Protection on the Setup Menus.

- You must exit Setup and re-enter setup to activate the password protection.
- If a user password is specified, you will be prompted for your password whenever you press the Setup key on the remote.
- If the password entered matches the stored password, full access is granted to the user until the next power off cycle.
- If the password does not match, the user will be asked 2 more times to enter the correct password. If after the third try the password still does not match, the system will not allow the user access to the Setup menus.
- If the user does not specify a System Password, access to the Setup menus will be allowed whenever you press the Setup key.

Removing a System Password – Follow these steps to remove the system password:

1. Press the SETUP key and enter your existing system password.
2. Highlight the CLEAR button on screen and press the SELECT key on your remote.
3. The password and verify fields will be cleared.
4. Highlight the SAVE button and press SELECT.

You will now be able to enter Setup without entering a password.



MOVIE RATINGS

Movie Ratings are used to prohibit the display of certain movies in the Movies Guide. This feature is used in conjunction with the Password Protection feature. You must have Password Protection enabled and a password entered for the Movie Ratings to be in effect. See the section above for more information on Enabling Password Protection.

Select the highest movie rating you want to display in the Movies Guide without entering a password. For example, if you select **PG-13** all movies with an MPAA rating above PG-13 (R, NC-17, and X) **will not be shown** in the Movies Guide when Password Protection is enabled.

Follow these steps to select a Movie Rating:

1. Press the **SETUP** key on the remote to display the Setup menu.
2. Select the **GENERAL** Menu.
3. Select the **MOVIE RATINGS** Menu.
4. Select the highest movie rating you want to display in the Movies Guide without entering a password.
5. Select the **SAVE** button to save your changes and return to the previous screen.



CHOOSING YOUR NETWORK CONNECTION

FireBall supports two networking methods, Ethernet and Dialup Modem. Your FireBall must be connected to the Internet in order to lookup disc information, download software updates, and access Internet Radio.

Note: An external modem is necessary for Dialup access. External modems are available from most computer retail stores or contact your Escient dealer for more details.

If you have a broadband Internet connection such as a cable modem, DSL, or ISDN line, select Ethernet and connect FireBall to your Ethernet network. You may need additional networking hardware (like an Ethernet hub) to join your FireBall to your Ethernet network. See your Escient dealer for more information about home networking.

If you have a dialup ISP (Internet Service Provider (such as AOL, Compuserve, Earthlink, MSN etc...)) select the Dialup Modem button.

Follow these steps to select your network connection:

- 1. Press the SETUP key on the remote to display the Setup menu.**
- 2. Select the NETWORK Menu**
- 3. Select the NETWORK CONNECTIONS Menu**
- 4. Select either ethernet or dialup modem.**

ESCIENT®

FireBall™ DVD-100 User's Manual



Testing the Your Connection

It is a good idea to verify that your selected network connection is functioning properly before exiting the Network Connections screen.

Follow these steps to test your selected network connection:

- 1. Select the TEST CONNECTION button on the Network Connections screen.**
- 2. Wait for the tests to complete. A check mark next to each test indicates that it passed while an "X" indicates that the test failed.**
- 3. Select the RETURN button to return to the previous screen.**

If one or more connection tests receive an X, make sure your cables are properly connected and you have properly setup for Ethernet Settings or Dialup Modem Settings.



Ethernet Settings

Ethernet is the preferred networking choice which provides you with the best network performance and allows your FireBall to act as a “server” to deliver your music collection throughout your home network using the optional FireBall Music Players.

Ethernet networks require that you configure each device on the network with a valid “address”. These addresses are usually configured automatically by your network hardware. If your PC is setup using Dynamic or “DHCP” addressing, you should most likely use the same for your FireBall.

Connect your FireBall to your Ethernet network using the included Ethernet cable and then follow these steps to specify your Ethernet settings:

- 1. Press the SETUP key on the remote to display the Setup menu.**
- 2. Select the NETWORK Menu**
- 3. Select the ETHERNET SETTINGS Menu**
- 4. Select Dynamic for automatic address configuration or Static if you want to manually enter your TCP/IP address information.**

If you select Static TCP/IP addressing, you will need to obtain a valid IP address, subnet mask, DNS server, and gateway addresses from your network administrator.



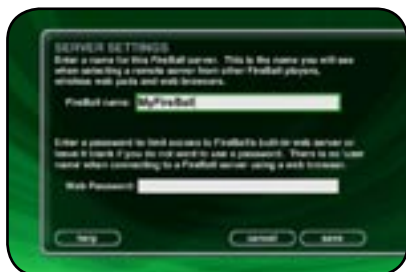
Dialup Settings

If you are going to use a dialup ISP to connect your FireBall to the Internet, you must provide information for your selected ISP. This information can be obtained by contacting your ISP or from your PC, if you already use it to connect to the Internet.

Connect you phone line to a Hayes compatible modem and connect the modem to COM PORT 4 on the back of your FireBall, then follow these steps to specify your Dialup Modem settings:

1. Press the SETUP key on the remote to display the Setup menu.
2. Select the NETWORK Menu
3. Select the DIALUP SETTINGS Menu
4. Enter your login or user name.
5. Enter your password.
6. Enter 1 or 2 dialup access numbers obtained from your ISP.
7. Select your dialing method: Tone or Pulse.
8. Enter any required dialing prefixes you may need for your phone system such as '9' to get an outside line.
9. If you have Call Waiting service on your phone line, you should enter “*70,” (or any other code) to temporarily disable it while using FireBall. This prevents a Call Waiting call from interrupting any FireBall Internet functions that may be in progress, such as updating.
10. Finally select which Provider you are using: AOL, CompuServe or Other.

If you want to test the dialup modem connection, select the **TEST CONNECTION** button to run the test as described above.



SETTING THE FIREBALL SERVER SETTINGS

FireBall's server allows you to control it remotely using a web browser on your PC. The FireBall Name allows you to easily locate and connect to your FireBall by name.

Follow these steps to enter a name for your FireBall:

1. Press the SETUP key on the remote to display the Setup menu.
2. Select the NETWORK menu.
3. Select the FIREBALL SERVER SETTINGS menu.
4. Enter a name for your FireBall using the remote control or wireless keyboard.
For example: "Living Room" or "Home Theater" might be a name which helps identify which FireBall you want to connect to.

Follow these steps to enter a password to be used when connecting to your FireBall from a web browser:

1. Press the SETUP key on the remote to display the Setup menu.
2. select the NETWORK menu.
3. Select the FIREBALL SERVER SETTINGS menu.
4. Enter a password to be used from your PC when connecting from your web browser.

Note: There is no User Name when connecting from a web browser.

ESCIENT®

FireBall™ DVDM-100 User's Manual



DIGITAL INPUT PREFERENCES

You must specify which of the digital audio inputs you are using to connect the digital audio outputs from your external changers. The optical connectors are the small square connectors with a red light shining from the center. The coaxial connectors are the round connectors which look like analog audio connectors or “RCA” jacks.

Follow these steps to select a your Digital Audio Input Preferences:

1. Press the SETUP key on the remote to display the Setup menu.
2. Select the AUDIO/VIDEO Menu.
3. Select the DIGITAL INPUT PREFERENCES Menu.
4. Select either OPTICAL or COAX as your input type.
5. Select the SAVE button to save your changes and return to the previous screen



VIDEO OUTPUT PREFERENCES

Video Format

Allows you to select 4:3 or 16:9 aspect ratios on your TV screen.

Follow these steps to center the FireBall screen:

1. Press the SETUP key on the remote to display the Setup menu.
2. Select the VIDEO menu.
3. Select the VIDEO FORMAT menu.
4. Using the Up and Down keys on the remote, select your desired aspect ratio.
5. Press the SELECT key on the remote to highlight the SAVE button.
6. Press SELECT again to save the current desired format.



▼ 4:3 User Interface



▼ 16:9 User Interface





Centering the FireBall Screen

Allows you to center the FireBall user interface horizontally on your TV screen.

Follow these steps to center the FireBall screen:

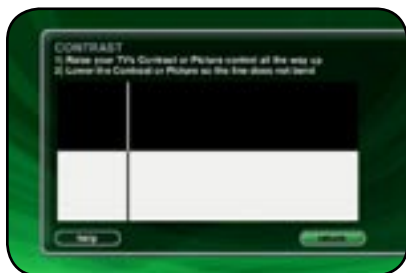
1. Press the **SETUP** key on the remote to display the Setup menu.
2. Select the **VIDEO** menu.
3. Select the **SCREEN CENTERING** menu.
4. Using the **Left** and **Right** keys on the remote, adjust the screen so that it appears **HORIZONTALLY** centered on your TV.
5. Press the **SELECT** key on the remote to highlight the **SAVE** button.
6. Press **SELECT** again to save the current position.



Adjusting your TV's Brightness

Follow these steps to adjust the brightness on your TV:

1. Press the SETUP key on the remote to display the Setup menu.
2. Select the VIDEO menu.
3. Select the BRIGHTNESS menu.
4. Turn your TV's brightness control all the way up then lower it to the point where the vertical black bar on the left just disappears. This will get your brightness control as close to the proper setting as possible without the use of special software and hardware.
5. Press SELECT to return to the previous menu.



Adjusting your TV's Contrast

The Contrast or Picture Adjustment control allows you to optimize the contrast (which is sometimes called Picture) of their TV, using the TV's Contrast or Picture controls. This setting helps reduce video "blooming" and create a clearer, more readable user interface.

Follow these steps to adjust the contrast on your TV:

- 1. Press the SETUP key on the remote to display the Setup menu.**
- 2. Select the VIDEO menu.**
- 3. Select the CONTRAST menu.**
- 4. Turn your TV's Contrast or Picture control all the way up, then lower it to the point where the vertical line appears straight and does not bend. It may not be possible to make it completely straight on some TV sets. This will get your Contrast control as close to the proper setting as possible without the use of special software and hardware.**
- 5. Press SELECT to return to the previous menu**



Adjusting your TV's Sharpness

The Sharpness adjustment allows you to set the Sharpness or Detail control of their TV so that onscreen text is as readable as possible. Proper adjustment of the Sharpness control (sometimes called the Detail control) on your TV, allows you to see video and on screen menus more accurately.

Follow these steps to adjust the sharpness on your TV:

- 1. Press the SETUP key on the remote to display the Setup menu.**
- 2. Select the VIDEO menu.**
- 3. Select the SHARPNESS menu.**
- 4. Turn your TV's Sharpness or Detail control up and down until the text on the screen is as readable as possible. Be sure to adjust your Brightness and Contrast before adjusting the Sharpness control. This will get your Sharpness control as close to the proper setting as possible without the use of special software and hardware.**
- 5. Press SELECT to return to the previous menu**



Adjusting your TV's Color and Tint

Color Bars are used to test the TV monitor's ability to reproduce the proper color values.

Follow these steps to adjust the Color and Tint on your TV:

1. Press the SETUP key on the remote to display the Setup menu.
2. Select the VIDEO menu.
3. Select the COLOR BARS menu.
4. Turn your TV's Color and Tint controls up and down until the color bars are at the point where they are not appearing to bleed together and the colors do not appear to be too bright. This will get your Color and Tint controls as close as possible without the use of special software and hardware.
5. Press SELECT to return to the previous menu



EXTERNAL CONTROL SURROUND MODE SETTINGS

FireBall will automatically switch the proper video and audio output from the appropriate DVD changer when you play a movie title. This allows you to use one input on your A/V receiver or TV instead of 3. You may use either composite, S-video, or component video connections and analog, digital, or 5.1 analog audio connections from each changer to the FireBall. Use the same type of connections for all changers. Also use the same types of connections from FireBall to your A/V receiver or TV monitor.

FireBall is equipped with the following video input and output ports:

- 2 composite video outputs (touch panel and TV)
- 2 S-video outputs (touch panel and TV)
- 1 set of component video outputs
- 3 sets composite video inputs
- 3 sets of S-video inputs
- 3 sets of component video inputs

Follow these steps to set the Surround Mode Settings:

1. Press the **SETUP** key on the remote control.
2. Select the **External Control** Menu.
3. Select the **Surround Mode Settings**.
5. Set the desired media to the desired receiver mode.
6. Highlight the **SAVE** button and press **SELECT** to save the settings.

Note: FireBall does not alter the video or audio signal quality in any way. All video and audio signals are switched and then passed through FireBall to your home theater system. Because video and audio signals are switched, you must use matching cable types between your changers, FireBall, and your home theater.

Note: Surround Mode Settings is compatible with select Denon and Marantz A/V receivers with RS-232 control. Please contact Escent or your Escent dealer for more information about this feature.

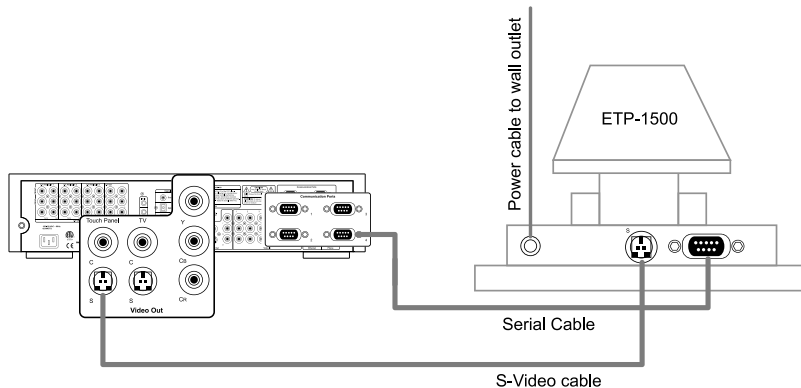
INSTALLING THE ETP TOUCH PANEL

The optional Escent Touch Panel is an external 15" flat LCD color display that offers full control of a FireBall via it's integrated touch sensitive surface.

Follow these steps to connect the ETP-1500 to a FireBall:

1. Place the FireBall into Standby.
2. Connect the RS-232 serial cable to COM PORT 4 on the rear panel of your FireBall.
3. Connect the other end of the RS-232 serial cable to the bottom of the ETP-1500.
4. Connect one end of an S-Video cable to one of FireBall's two S-Video outputs.
5. Connect the other end of the S-Video cable to the S-Video input on bottom the ETP-1500.
6. Connect the ETP-1500 to an AC power source.
7. Press the power button on the front panel of the ETP-1500. The LED will turn amber.
8. Power on the FireBall, the LED on the touch panel will turn green.

The ETP-1500 will automatically be detected on COM PORT 4 and the user interface will display the touch panel buttons around the perimeter of the screen.





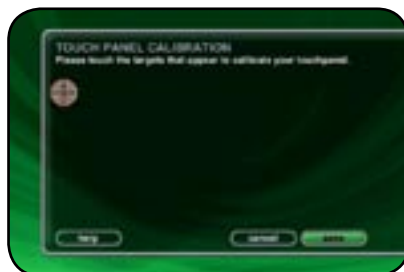
Calibrating the Touch Panel

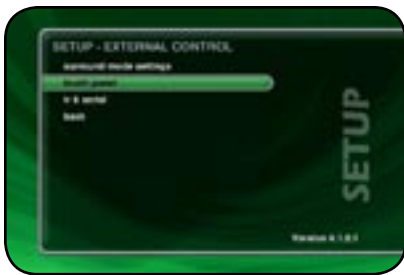
To obtain the maximum performance from the ETP-1500 Touch Panel, the main user should calibrate the display using the Calibration tool.

Follow these steps to calibrate the ETP-1500 Touch Panel:

- 1. Press the SETUP key on the remote control.**
- 2. Select the External Control Menu.**
- 3. Select the Touch Panel Menu.**
- 4. Select the Calibration Menu.**
- 5. The calibration screen is displayed.**
- 6. Follow the on screen instructions, by touching the moving target with your finger.**

When the calibration procedure is complete, you can operate the FireBall by touching the buttons around the perimeter of the screen. Although these buttons duplicate the functionality of the FireBall remote, you can still use the wireless IR remote and Escient keyboard even when the ETP-1500 is in use.





Changing the Touch Panel Button Overlay

The Button Overlay feature places button controls onto the FireBall user interface for use with the Escient ETP-1500 touch screen and third-party touch panels. The ETP-1500 is automatically detected on the FireBall serial ports and the select overlay is enabled.

You may choose to manually enable or disable the Third Party Overlay or Escient Touch Panel overlays. There are two types of overlays, the Button Frame and the Toggle Bar. The Button Frame is useful for panels that are capable of displaying video in the overscan area, such as the ETP-1500. The Toggle Bar is useful for panels that can not display video in the overscan area. The Toggle Bar should be used for most Third Party touch panel systems.

Using Your Touch Panel

The Touch Panel Overlay should now be displayed around the edges of your screen. These buttons duplicate the functions found on the remote control and allow you to interact and control FireBall by touching each button on the ETP-1500.



▲ Button Frame Interface



▲ Toggle Bar Interface



IR REMOTE CONTROL

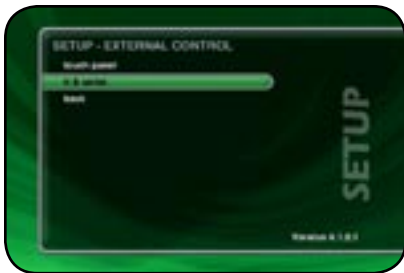
FireBall is preset from the factory to operate from the FB1 source button, however, the FireBall can be configured to use any one of the four source buttons using the on screen Setup menus. This is useful when there are multiple FireBalls installed at the same location, so all FireBalls don't respond to the same IR commands. Use the following steps to change which source button (**FB1, FB2, FB3, or FB4**) each FireBall will listen for commands from:

Follow these steps to configure your FireBall to be controlled by any of the four IR code banks:

1. Press the Setup key on the remote to display the FireBall setup menu.
2. Select the External Control menu item.
3. Select the IR Remote Control menu item.
4. Select which source button to use to control this FireBall.
5. Press the new source button on your remote to reconfigure the remote and confirm the change by selecting the OK button on screen.

Repeat these steps for each FireBall in your system, selecting a different FB button for each.





DIRECT ACCESS CODES

Direct Access Codes are used in conjunction with the MACRO key on the remote control to provide an IR code sequence to access just about any media in your FireBall server. This is useful for programming third-party external control systems and programmable IR remote controls such as the Marantz RC9500.

The Direct Access Codes are available for all music and movie titles, playlists, groups, and radio stations.

Follow these steps to view the direct IR codes for your FireBall content:

1. Press the Setup key on the remote to display the FireBall setup menu.
2. Select the External Control menu item.
3. Select the Direct Access Codes menu item.
4. Select which codes you want to view:
 - a. Music Titles
 - b. Music Discs
 - c. Music Playlists
 - d. Music Groups
 - e. Radio Stations
 - f. Movie Discs
 - g. Movie Groups

Note: You can make a print out of this information by using the FireBall Web Server Interface. Connect to your FireBall's IP address and look under Setup->Direct Access Codes.



The following table is used to determine the button sequence for direct access code sequences from the Escient IR remote and IR keyboard.

Direct Media Access IR Remote Definitions

Function	Multi-Key Combinations
Direct Play Mode	Macro, 1, [play mode number], Enter
Direct Disc	Macro, 2, [changer number], Macro, [disc number], Enter
Direct Artist-Title	Macro, 3, [artist-title access number], Enter
Direct Group	Macro, 4, [group access number], Enter
Direct Movie Title	Macro, 6, [movie title access number], Enter
Direct Playlist	Macro, 7, [playlist access number], Enter
Direct Track	Macro, 8, [track number], Enter
Direct iRadio Station	Macro, 9, [iRadio access number], Enter

ESCIENT®

FireBall™ DVD-100 User's Manual

The following table is used to determine the button sequence for direct access code sequences from the Escient IR remote and IR keyboard.

Direct Media Access IR Remote Definitions

Function	Multi-Key Combinations
Direct Play Mode	Macro, M, [play mode number], Enterr
Direct Artist-Title	Macro, A, [artist-title access number], Enter
Direct Movie Title	Macro, V, [movie title access number], Enter
Direct iRadio Station	Macro, R, [iRadio access number], Enter
Direct Disc	Macro, C, [changer number], D, [disc number], Enter
Direct Track	Macro, T, [track number], Enter
Direct Playlist	Macro, P, [playlist access number], Enter
Direct Group	Macro, G, [group access number], Enter

Example 1: Use the keyboard to play disc 14 in changer 1.

Press: MACRO, C, 1, D, 1, 4, ENTER

Example 2: Use the keyboard to play playlist number 5

Press: MACRO, P, 5, ENTER

Example 3: Use the remote to play disc 14 in changer 1.

Press: MACRO, 2, 1, MACRO, 1, 4, ENTER

Example 4: Use the remote to play playlist number 5.

Press: MACRO, 7, 5, ENTER

Example 5: Use the remote to play the movie number 123.

Press: MACRO, 6, 1, 2, 3, ENTER

Note: If you do a lot of editing to your music and movie collection, these numbers may change. If you experience trouble with the Macro key feature, please check that the direct IR numbers are still correct under SETUP.



PLAYLIST HOT KEYS

Playlist Hot Keys provides a Keyboard Macro sequence to directly access any five Playlists in your Music collection from any of these five keyboard combinations:

- Control + Backspace
- Control + Insert
- Control + Delete
- Control + Top
- Control + Bottom

Follow these steps to assign a Playlist to one of the five available keyboard combinations:

1. Press the Setup key on the remote to display the FireBall setup menu.
2. Select the External Control menu item.
3. Select the IR & Serial menu item.
4. Select the Playlist Hot Keys menu item.
5. Select one of the five keyboard combinations from the spin control using the SELECT button on the remote.
6. Navigate down to the list and select which Playlist to assign to the current keyboard combination.
7. Repeat steps 4 and 5 for each keyboard combination.



Note: If there is nothing in the Playlist Hot Keys list, you must first create Playlists on your FireBall.



SERIAL COM PORTS

The Serial Control COM Port setting is used to specify which RS-232 serial COM port is to be used for two-way external control communications with a third party control system.

If there are no available COM ports, you must use the Ethernet based external control for two-way external control communications with a third party control system.

Follow these steps to select which serial port to use for external control:

- 1. Press the Setup key on the remote to display the FireBall setup menu.**
- 2. Select the External Control menu item.**
- 3. Select the IR & Serial menu**
- 4. Select the Serial Control COM Port menu item.**
- 5. Select which serial port to use for external control.**



CONTROLLING FIREBALL FROM OTHER DEVICES

In addition to the Escient ETP-1500 wired touch panel, FireBall provides the user and custom A/V installer with many options for control and integration into any home theater or home automation system using direct IR codes, two-way RS-232 serial control, two-way Ethernet control, and wireless web pad control.

FireBall has built-in support for the following companies' control products:

- **AMX**
- **Crestron**
- **Elan Via**
- **Home Theater Master**
- **Lexicon**
- **Marantz**
- **Net Streams**
- **Opus**
- **Phillips Pronto**
- **RTI**
- **Sonance**
- **Xantech**

Please check the Escient web site or contact your Escient dealer for more information about integrating FireBall into your existing or new home theater or home automation system.

ESCIENT®

FireBall™ DVD-100 User's Manual



FIREBALL UTILITIES

GETTING INFORMATION ABOUT YOUR FIREBALL

Information about your FireBall hardware and software is available under the Utilities menu. This information is useful for troubleshooting any problems you may encounter with your network connection or verifying the current software versions.

Follow these steps to view the FireBall system information:

1. Press the **SETUP** key on the remote to display the Setup menu.
2. Select the **UTILITIES** menu.
3. Select the **SYSTEM INFORMATION** menu.

ESSENTIAL[®]

FireBall™ DVDM-100 User's Manual



RESTARTING THE SYSTEM

There are two ways of manually performing a full restart or reboot of the FireBall system, one using the front panel power button and the other using the Restart System menu.

Follow these steps to restart the system using the front panel Power Button:

1. Press and hold the power button for 4 seconds.
2. When the LED on the front panel begins to flash, release the power button.
3. When the LED on the front panel glows solid RED (standby mode), FireBall is ready to use.
4. Press and release the Power button to turn on FireBall.

Follow these steps to restart the system using Utilities menu:

1. Press the SETUP key on the remote to display the Setup menu.
2. Select the UTILITIES menu.
3. Select the RESTART SYSTEM menu.
4. Confirm that you want to restart the system and select the RESTART button.
5. When the LED on the front panel glows solid RED (standby mode), FireBall is ready to use.
6. Press and release the Power button to turn on FireBall.



UPDATING THE SOFTWARE

FireBall will automatically check the Escient server once a week for any FireBall software updates, and automatically install them. You can also manually check for a software update.

Follow these steps to manually update the software:

1. Press the SETUP key on the remote to display the Setup menu.
2. Select the UTILITIES menu.
3. Select the UPDATE SOFTWARE menu.
4. Select the Check for Update button.
5. Confirm that you want to update the current software.
6. FireBall will connect to Escient and compare the current software version with the latest release. If a newer version of the FireBall software is available, it will be downloaded and installed.

ESCIENT®

FireBall™ DVDM-100 User's Manual

CONTROLLING FIREBALL FROM A WEB BROWSER

FireBall contains a built-in web server which means you can connect to your FireBall and remotely control it using a standard web browser from a PC, Mac, or PDA over your home network.

SETTING UP THE FIREBALL WEB SERVER

Your FireBall acts as a web server on your network allowing you to connect and control the FireBall using your PC or Mac computer. This web server is automatically configured and started each time the FireBall is plugged in. You connect to the server from your PC or Mac using Internet Explorer or Safari (Mac OSX) using TCP/IP addressing over your home network. You can use a wireless or wired Ethernet network, as long as you have a DHCP router or if you have assigned static IP addresses. Please contact your Escient dealer if you need assistance with setup a home network.

The FireBall Server Name entered on the Server Settings Menu in the SETUP/NETWORK menus is used for the web address to access the FireBall web interface.

USING THE WEB USER INTERFACE

Using the Web User Interface displayed in your Web Browser, you can control almost every aspect of your FireBall. The Web User Interface is setup very similarly to FireBall's own TV user interface allowing access to each source (Music, Movies, Radio) as well as all major features such as Setup, Guide/Player, Options and Edit Screens.

Use your keyboard and mouse to navigate the web interface instead of the IR remote control. Access to all of the major functions is provided by the buttons along the left and right side of the web interface. These buttons duplicate those found on the remote control.



▲ Fixed 800x600 Web Interface



◀ Resizable PDA Web Interface

NETWORKED AUDIO USING FIREBALL MUSIC CLIENTS

SERVERS

A FireBall Server is a Fireball media management system that is capable of “serving” media to other FireBalls over a network. The FireBall is a considered a “server” product.

CLIENTS

A FireBall Client is a FireBall that can play media from a FireBall Server over a network. Currently there are three different FireBall products that can play media from FireBall servers:

- FireBall MP-150
- FireBall DVD-100
- Client-Server networking is limited to the same local subnet. You can not stream over the Internet unless you have a VPN setup between the two FireBalls.
- Only MP3 and FLAC audio files can be streamed to clients. You can't stream CDs from the internal drive or from external changers.
- Playlists that contain only MP3s/FLAC files will be available on the clients.
- Playlists that contain MP3s/FLAC files and non-streamable tracks will NOT appear on the clients.
- You may have an unlimited number of clients on the network, but you can only stream to 4 clients simultaneously.
- Movies can not be streamed.
- Internet Radio can not be streamed (but it is available on most standalone products).

ESCIENT[®]

FireBall™ DVD-100 User's Manual

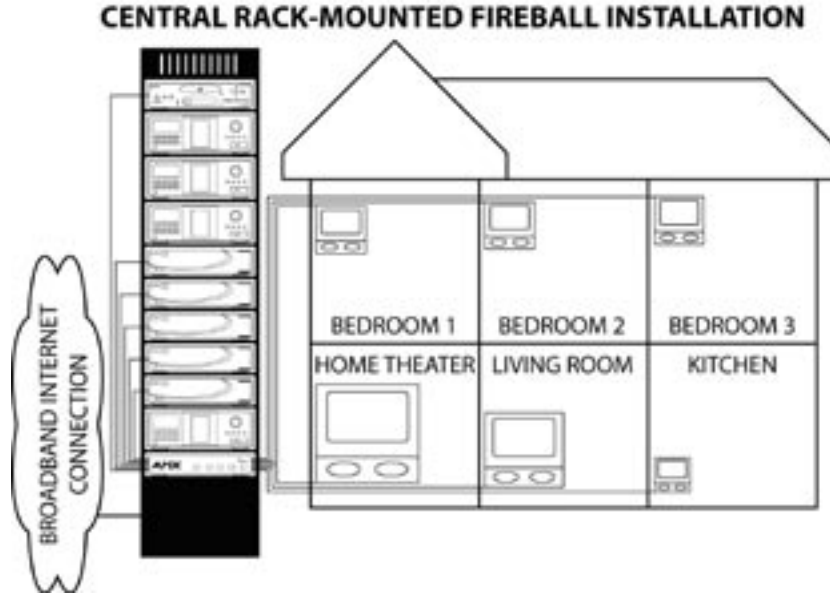
LOCATING THE FIREBALL CLIENTS AND SERVERS

Central

If you locate your FireBall clients and servers in a central location such as an equipment or utility room, you will need to use a third party audio/video distribution system to deliver sound and picture to each room. This type of installation allows great flexibility for delivering music, movie, and Internet radio to every room of the home or office and provides the professional installer with tools for almost any installation.

FireBall is built from the ground up with many features that allow you to centrally locate and remotely control your FireBall clients and servers, such as:

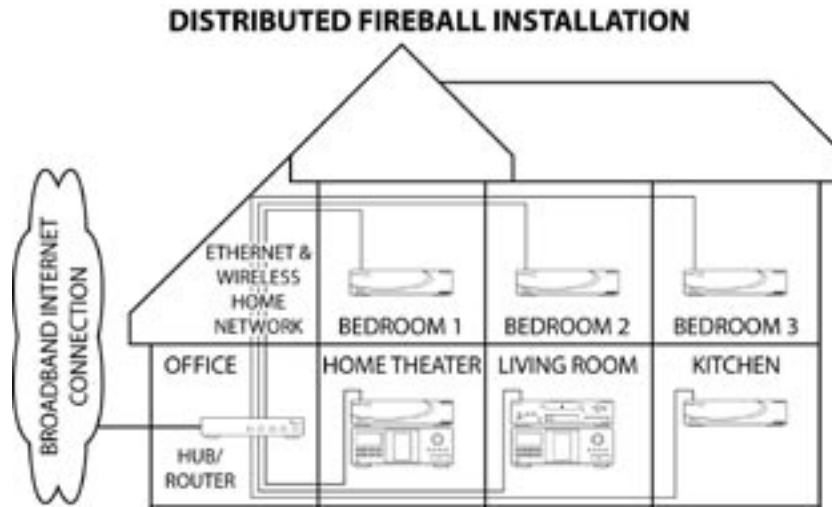
- Direct IR input
- Two way serial control over RS-232
- Two way serial control over ethernet
- Wireless IR remote and Keyboard options
- Support for 4 different IR banks (4 IR zones)
- Templates for integration into many third party wired and wireless IR distribution systems
- Philips and Marantz Pronto remote control templates



Distributed

A distributed FireBall installation means that your FireBall Servers and Clients are physically distributed or located in different rooms. Distributed FireBalls communicate over a wired or wireless network to share access to your media.

The biggest advantage of a distributed client-server system over a central system is that everything you need is built into FireBall. Networking, zoned IR, independent high-quality audio and video feeds, as well as support for an unlimited number of rooms or zones using standard ethernet wiring. (Note: only 4 clients can stream from the same server at one time).



ESSENTIAL[®]

FireBall™ DVD-100 User's Manual

CONFIGURING A FIREBALL SERVER

Every FireBall capable of server functions is automatically enabled to serve MP3 and FLAC audio whenever it is plugged in and properly configured for your network.

It is recommended that you give each of your FireBall servers a unique name that describes it's location using the **SERVER SETTINGS** screen which can be accessed from **Setup/Network /Server Settings**. Names like "LivingRoom", "HomeTheater", "MyMusicServer" are all good examples.

Note: Do not use spaces in the FireBall Server Name.

Optionally, you can assign a password for web access to the FireBall. This password is independent from the Parental Controls password and is used to limit access to FireBall's web server from any standard web browser on your network. If a password is entered here, the user will be asked to enter it when connecting to the FireBall from their PC. This password is provided to protect access to your FireBall through the standard HTTP port 80 on your subnet.

CONFIGURING A FIREBALL CLIENT

Networking

Each FireBall client must be on the same network as the server. This document will assume that you have properly connected your FireBall client to the same network as your FireBall server. Please refer to the HomeNetworkingPrimer support document on the Escent web site for more information about home networking.

Server Selection

FireBall clients will automatically select the first server it sees on the network and connect to it upon startup.

If you have more than one server on your network, you can manually select a different server using the **Server Connection** screen which can be accessed from **Setup/Internet Configuration/Server Connection**.

The Server Connection screen displays a list of FireBall Servers found on your network by their default or user defined "FireBall Name".

Once you select a server and save your selection, press MUSIC to view the Music Guide on the client. In a few moments, the Music Guide will display the contents of the FireBall server. You can then select and play anything from the Music Guide just as you would from a single FireBall.

ESCENT[®]

FireBall™ DVDM-100 User's Manual

ESCIENT TECHNICAL SUPPORT

Contact your dealer or Escient's Customer Support group.

Hours: Monday - Friday 9:00am - 7pm EST

Phone: 800-372-4368 Press "2" for Sales, or "3" for Support

Fax: 317-616-6790

Internet: www.escient.com

Email: support@escient.com

Please have the following information ready for the Escient Customer Support technician:

- Product Serial Number
- Model Number
- Date of Registration or Purchase
- Place of Purchase

ESCIENT®

FireBall™ DVD/DM-100 User's Manual

TROUBLESHOOTING

NETWORK PROBLEMS

If you experience problems registering a FireBall or connecting to the Internet to lookup disc information, try these possible fixes before calling Escient Tech Support:

- Make sure that your FireBall is properly connected to your home network and that all cables are in working order.
- FireBall communicates using TCP/IP and UDP over Ethernet networks using ports 80, 443, and 1755. If you have a router installed on your network, make sure that these ports are open for TCP and UDP.
- If Dynamic TCP/IP addressing fails, check your router to make sure that it is configured to assign dynamic IP addresses via DHCP and try rebooting your router.
- If DHCP addressing still isn't working, try using static IP addresses. The Internet Assigned Numbers Authority (IANA) has reserved the following three blocks of the IP address space for private networks: 10.0.0.0 - 10.255.255.255, 172.16.0.0 - 172.31.255.255, and 192.168.0.0 - 192.168.255.255. Note that the first block is nothing but a single class A network number, while the second block is a set of 16 contiguous class B network numbers, and the third block is a set of 255 contiguous class C network numbers. The complete RFC 1918 can be found via FTP on <http://nic.ddn.mil>
- Crestron, AMX, or other third party controllers capable of controlling the FireBall over Ethernet use port 251. Make sure your router has port 251 open if you plan on using two-way control over Ethernet.

SOFTWARE UPDATE PROBLEMS

Manual Software Update Checks

Software Updates are automatically checked once a week starting on the day of the week your FireBall was first registered. You can manually check for a software update by accessing the Software Update menu found under the Setup/Utilities Menu.

RECORDING PROBLEMS

Audio vs. Data CDs

FireBall requires Royalty paid blank media when recording audio CDs. Blank CDs marked with "Data" can not be used when creating Red Book audio CDs. You must purchase and use blank media marked as "Audio" or Music" CDs.

ESCIENT®

FireBall™ DVDM-100 User's Manual

ADDITIONAL INFORMATION

SPECIFICATIONS

Specifications are subject to change without notice. Please check the Escent web site for any changes to the specifications.

Video Specifications

- NTSC
- 10 bit Video DACs
- Frequency Response:
- Composite: -2 dB @ 5MHz
- S-Video: -2 dB @ 5MHz
- SNR: 50 dB
- Crosstalk: 50 dB
- Input Impedance: 75Ohm
- Output Impedance: 75Ohm

Audio Specifications

- Frequency Response: 2 – 20,000 Hz, ± 1 dB
- THD+N (playback) < -80 dB FS A (< 0.01%)
- A_D-DSP-D-A Dynamic Range: > 96 dB FS A @ 1kHz
- Channel Separation: >95 dB
- Full Scale Line Output: > 2 Vrms, 50 k ohms
- S/PDIF Output: 0.4Vpp to 0.6Vpp, <0.05Vdc (75ohm terminated)
- Power Requirements: AC 90-132 VAC, 50-60 Hz
- Power Consumption: < 60 watts

Physical Specifications

Width: ~ 17 3/8"

Height: ~ 4 5/8" w/ feet; ~ 4" w/o feet

Depth: ~ 11 7/8"; Installed 14 3/8"

3rd Party Certifications

- FCC: US Part 15, Class B
- NTSC Video Output: NTSC RS-170A
- eETL Listing
- Conforms to: UL STD 6500-2000
- Certified to: CAN/CSA STD E60065-00
- CE

FCC Part 15, Subpart B

Class B

Note: This equipment has been tested and found to comply with the limits for a Class B digital device, pursuant to Part 15 of the FCC Rules. These limits are designed to provide reasonable protection against harmful interference in a residential installation. This equipment generates, uses, and can radiate radio frequency energy and, if not installed and used in accordance with the instructions, may cause harmful interference to radio communications. However, there is no guarantee that interference will not occur in a particular installation. If this equipment does cause harmful interference to radio or television reception, which can be determined by turning the equipment off and on, the user is encouraged to try to correct the interference by one or more of the following measures:

- Reorient or relocate the receiving antenna.
- Increase the separation between the equipment and receiver.
- Connect the equipment into an outlet on a circuit different from that to which the receiver is connected.
- Consult the dealer or an experienced radio TV technician for help.
- Shielded cables must be used with this unit to ensure compliance with the Class B FCC limits.

ESCENT[®]

FireBall™ DVDM-100 User's Manual



GRACENOTE® END-USER LICENSE AGREEMENT USE OF THIS PRODUCT IMPLIES ACCEPTANCE OF THE TERMS BELOW.

This product contains technology and data from Gracenote of Emeryville, California (“Gracenote”). The technology from Gracenote (the “Gracenote Embedded Software”) enables this product to do disc identification and obtain music-related information, including name, artist, track, and title information (“Gracenote Data”), which is included on the Gracenote Database (the “Gracenote Database”).

You agree that you will use Gracenote Data, the Gracenote Database, and Embedded Software for your own personal non-commercial use only. You agree that you will access Gracenote Data only by means of the standard end user functions and features of this product. You agree not to assign, copy, transfer or transmit the Embedded Software or any Gracenote Data to any third party. **YOU AGREE NOT TO USE OR EXPLOIT GRACENOTE DATA, THE GRACENOTE DATABASE, OR GRACENOTE COMPONENT, EXCEPT AS EXPRESSLY PERMITTED HEREIN.**

You agree that your non-exclusive license to use the Gracenote Data, the Gracenote Database, and Embedded Software will terminate if you violate these restrictions. If your license terminates, you agree to cease any and all use of the Gracenote Data, the Gracenote Database, and Gracenote Embedded Software. Gracenote reserves all rights in the Gracenote Data, Gracenote Database, and Gracenote Embedded Software, including all ownership rights. You agree that Gracenote may enforce its rights under this Agreement against you directly in its own name.

The Embedded Software and each item of Gracenote Data are licensed to you “AS IS.” Gracenote makes no representations or warranties, express or implied, regarding the accuracy of any Gracenote Data. Gracenote reserves the right to delete data or to change data categories in any Data updates and for any cause that Gracenote deems sufficient. No warranty is made that the Embedded Software is error-free or that functioning of the Embedded Software will be uninterrupted. Gracenote is not obligated to provide you with any new enhanced or additional data types or categories that Gracenote may choose to provide in the future.

GRACENOTE DISCLAIMS ALL WARRANTIES EXPRESS OR IMPLIED, INCLUDING, BUT NOT LIMITED TO, IMPLIED WARRANTIES OF MERCHANTABILITY, FITNESS FOR A PARTICULAR PURPOSE, TITLE, AND NON-INFRINGEMENT. GRACENOTE DOES NOT WARRANT THE RESULTS THAT WILL BE OBTAINED BY YOUR USE OF THE GRACENOTE COMPONENT OR ANY GRACENOTE SERVER. IN NO CASE WILL GRACENOTE BE LIABLE FOR ANY CONSEQUENTIAL OR INCIDENTAL DAMAGES OR FOR ANY LOST PROFITS OR LOST REVENUES.

Free Manuals Download Website

<http://myh66.com>

<http://usermanuals.us>

<http://www.somanuals.com>

<http://www.4manuals.cc>

<http://www.manual-lib.com>

<http://www.404manual.com>

<http://www.luxmanual.com>

<http://aubethermostatmanual.com>

Golf course search by state

<http://golfingnear.com>

Email search by domain

<http://emailbydomain.com>

Auto manuals search

<http://auto.somanuals.com>

TV manuals search

<http://tv.somanuals.com>