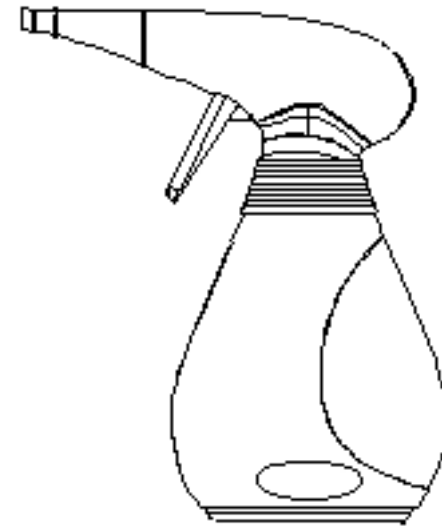




STEAM BOTTLE

OWNER'S MANUAL

Model SC618HD
120V., 60Hz., 1500 Watts



EURO-PRO Operating LLC
94 Main Mill Street, Door 16
Plattsburgh, NY 12901
Tel.: 1 (800) 798-7398



IMPORTANT SAFETY INSTRUCTIONS

When using your **Steam Bottle**, basic safety precautions should always be observed, including the following:

1. Read all instructions before using your Steam Bottle.
2. Use the system only for its intended use.
3. **Do not allow to be used as a toy. Close attention is necessary when used by or near children, pets or plants.**
4. To protect against a risk of electric shock, do not immerse any part of the system in water or other liquids.
5. Never yank cord to disconnect from outlet; instead, grasp plug and pull to disconnect.
6. **Do not** allow cord to touch hot surfaces. Let the system cool completely before putting away. Wrap cord loosely around system when storing.
7. Always disconnect system from electrical outlet when filling with water or emptying and when not in use.
8. **Do not** operate the system with a damaged cord or plug, or if the appliance or any other part of the system has been dropped or damaged. To avoid the risk of electric shock, do not disassemble or attempt to repair the Steam Bottle. Return the system to **EURO-PRO** Operating LLC for examination and repair. Incorrect re-assembly or repair can cause a risk of electrical shock or injury to persons when the Steam Bottle is used.
9. Close supervision is necessary for any appliance being used by or near children. Do not leave the system unattended while connected.
10. Burns can occur from touching hot metal parts, hot water or steam. Use caution when draining unit after use as there may be hot water in the unit. Never direct steam at any person. The steam is very hot and can cause burns.
11. **Do not** operate in the presence of explosive and/or flammable fumes.
12. This appliance is intended only for household use. Follow all user instructions in this manual.
13. Never use any chemicals or substance other than tap water in the machine. Use of chemicals may damage the machine. Use of chemicals will automatically void your warranty.

To reduce the risk of fire, electric shock, or injury:

- **Do not** leave the Steam Bottle plugged in when unattended. Unplug the electrical cord when not in use and before servicing or refilling water tank.
- Use only as described in this manual. Use only manufacturer's recommended accessories.
- **Do not** pull cord, use cord as a handle, close a door on cord, or pull cord around sharp edges or corners. Keep cord away from heated surfaces.
- **Do not** use extension cords or outlets with inadequate current carrying capacity.
- **Do not** unplug by pulling on cord. To unplug, grasp the plug, not the cord.
- **Do not** handle plug or steam cleaner with wet hands or operate without shoes.
- **Do not** put any objects into openings. Do not use with any opening blocked.
- Store your appliance indoors in a cool, dry area.
- Keep your work area well lit.
- **When in use, never turn the appliance over or on its side. Never direct steam towards people, animals or plants.**
- **Do not** immerse the steam cleaner into water or other liquids. Always unplug the power cord from the electrical socket when filling the steam cleaner.
- **Do NOT add cleaning solutions, scented perfumes, oils or any other chemicals to the water used in this appliance as this may damage the unit or make it unsafe for use.** Use tap water or distilled/purified water if the tap water in your area is very hard.
- **NEVER** attempt to fill this unit under a water faucet, always use the filling flask that is provided.
- Keep out of the reach of children.

SAVE THESE INSTRUCTIONS For Household Use Only

Model SC618HD



1 YEAR LIMITED WARRANTY

Your Steam Bottle is warranted to be free from defects in material and workmanship for a period of one (1) year from the date of purchase when utilized for normal household use by the original purchaser only. The included Warranty Registration Card must be filled out and returned within 10 days of purchase.

Should any defect covered by the terms of the limited warranty be discovered within one year, **EURO-PRO** Operating LLC will repair or replace any defective part provided the unit is returned by the original purchaser, freight prepaid, to:

EURO-PRO Operating LLC, 94 Main Mill Street, Door 16, Plattsburgh, NY 12901

Proof of purchase date and \$12.95 for handling and return packing/shipping charges must be included.*

The liability of under this warranty is limited solely to the cost of the replacement parts or the complete unit at our option. **LABOUR CHARGES ARE NOT INCLUDED.**

This warranty does not cover normal wear of parts and does not apply to any unit that has been tampered with or used for commercial purposes. This Limited Warranty does not cover damage caused by misuse, negligent handling, or damage due to faulty packaging or mishandling in transit (by any common carrier).

This warranty is extended to the original purchaser of the unit and excludes all other legal and/or conventional warranties. The responsibility of **EURO-PRO** Operating LLC, if any, is limited to the specific obligations expressly assumed by it under the terms of the limited warranty. In no event is **EURO-PRO** Operating LLC liable for incidental or consequential damages of any nature whatsoever. Some States do not permit the exclusion or limitation of incidental or consequential damages, so the above may not apply to you.

This warranty gives you specific legal rights which vary from state to state.

*important: Carefully pack item to avoid damage in shipping. Be sure to attach tag to item before packing with your name, complete address and phone number with note giving purchase information, model number and what you believe is the problem with item. We recommend you insure the package (as damage in shipping is not covered by your warranty). Mark the outside of your package "ATTENTION CUSTOMER SERVICE". **We are constantly striving to improve our products, therefore the specifications contained herein are subject to change without notice.**



OWNERSHIP REGISTRATION CARD

Please complete and return within ten (10) days of purchase. The registration will enable us to contact you in the event a product defect is discovered. By returning this card you acknowledge to have read and understood the instructions for use, and warnings set forth in the accompanying instructions.

RETURN TO: **EURO-PRO Operating LLC, 94 Main Mill Street, Door 16, Plattsburgh, NY 12901**

PURCHASER:

ADDRESS:

CITY: STATE:.....

DATE OF PURCHASE: MODEL: **SC618HD**


NAME AND ADDRESS OF DEALER:

Printed in China

USAGE SUGGESTIONS FOR STEAM BOTTLE

Upholstery

Use the triangular towel adapter with the triangle towel attached directly to the concentrator nozzle. Use fast, light strokes, avoid getting the fabric wet. Be patient with stubborn spots; work on a spot gently for no more than a minute at a time, then wait five minutes for the area to dry and repeat. Use circular movements or back and forth and side-to-side movements to get all sides of surface fibers. Finish with a brushing in one direction that will give the fabric a uniform appearance.

 **CAUTION:** Always determine the color-fastness of any fabric- especially with reds or blues - by taking a clean, moist, warm towel and gently rubbing a small area as far down on the back or other out of the way place on the furniture as possible. If color comes off on the towel, you may need to have the piece dry cleaned.

Clothing

A vapor cleaning system is excellent for removing wrinkles from fabrics. Simply "vaporize" the surface from a distance (12"-16") The dry vapor removes wrinkles without leaving the fabric wet like ordinary fabric steamers do.

Exterior Areas

For detailing the wheels, use the concentrator nozzle and the nylon detail brush.

Exterior windows are cleaned best by applying the vapor with the concentrator nozzle and following with the squeegee or a paper towel.

To clean bicycles, use the nylon detail brush.

To clean tools or equipment, use the nylon detail brush, depending on the surface area.

To clean BBQ's, use the nylon detail brush to clean the BBQ rack.

Garden Furniture

Use the nylon detail brushes on the surface area. Work quickly when cleaning resin outdoor furniture.

ADDITIONAL IMPORTANT SAFEGUARDS cont.

1. To avoid circuit overload, **do not** operate another appliance on the same socket (circuit)
2. If an extension cord is absolutely necessary, a 15 ampere 14 gage grounded cord should be used. Cords rated for less amperage may overheat. Care should be taken to arrange cord so that it cannot be pulled, tripped over or pinched.
3. **Do not** leave unattended when the system is connected to a power supply/electrical outlet.

SAVE THESE INSTRUCTIONS FOR HOUSEHOLD USE ONLY

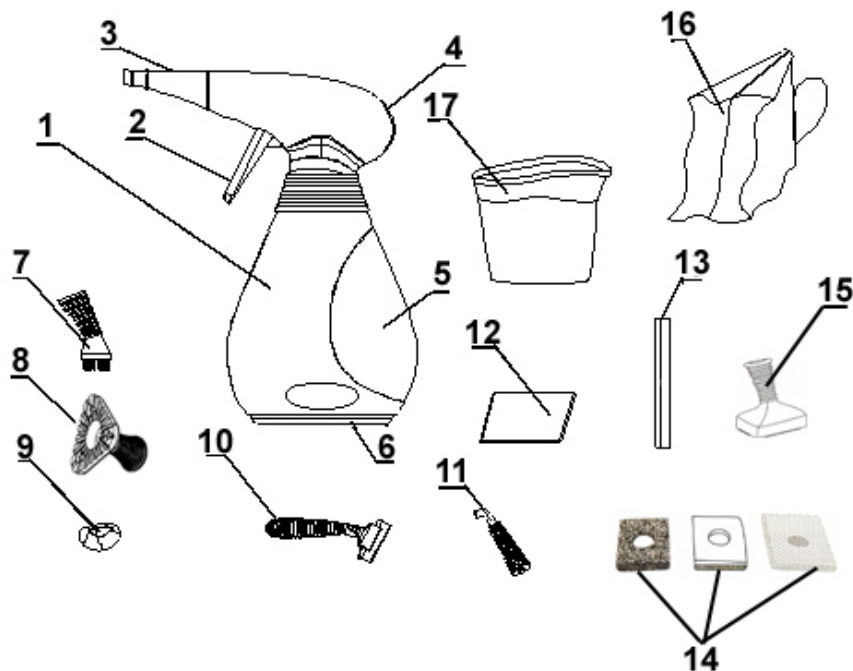
WARNING: This appliance is equipped with a grounded-type 3-wire cord (3-prong plug). This plug will only fit into an electrical outlet made for a 3-prong plug. This is a safety feature. If the plug should fail to fit the outlet, contact an electrician to replace the outlet. Do not attempt to defeat the safety purpose of the grounding pin, part of the 3-prong plug.

CAUTION: The force and heat of the steam may adversely affect certain materials. Always check the suitability of using the steam cleaner on a surface by carrying out a preliminary test on a hidden area.

Examples for **guidance** only: - Varnished wood or glossy leather can be bleached by the effects of steam.
- Shiny plastic materials risk being tarnished.
- Acrylic, velvets and linen are very sensitive to the temperature of steam.

The manufacturer accepts no responsibility for damage caused to objects, materials, animals or persons due to the inappropriate use of steam, and through ignoring the advice and recommendations set down in the Owner's Manual.

GETTING TO KNOW YOUR STEAM BOTTLE



1. Steam Bottle (x2)
2. Steam Trigger
3. Concentrator Nozzle (Non-Detachable)
4. Power On / Steam Ready Lights
5. Water Tank
6. Water Tank Filling Plug
7. Nylon Bristle Brushes (x4)
8. Triangle Towel Adapter (x2)
9. Triangle Towel Covers (x2)
10. Squeegee Handle (x2)
11. Extended Concentrator (x2)
12. Micro Fiber Cloths (x2)
13. Squeegee (x2)
14. scrubbing pad set (x2)
15. scrubbing pad holder (x2)
16. Carrying Bag (x2)
17. Filler Flask

Technical Specifications

Voltage:	120V., 60Hz.
Power:	1500 Watts
Water Capacity:	8 US Fl. Oz. (240 ml.)

*Note: Illustrations may differ from actual unit.

USAGE SUGGESTIONS FOR STEAM BOTTLE

Window, Glass Surfaces and Mirrors

Use the squeegee. Work with the vapor jet using top to bottom movements. Use the squeegee to clear the water from the glass. To do this without leaving streaks, use lateral movements from the top to the bottom of the surface. Do not use on cold glass.

CAUTION: When cleaning windows, always avoid any sudden changes in temperature to prevent glass breakage or cracks.

Fiberglass or Stainless Steel Surfaces

Use the nylon detail brush. Slowly move the brush over the surface to be cleaned. The vapor will emulsify the dirt and grease on the surface. Follow behind with the cloth towel over the brush to remove excess moisture and residue.

Tip: An old idea for polishing stainless steel is to wipe it down with seltzer soda water after it is cleaned.

Bathroom Areas

To clean the bathtub or shower area, use the nylon detail brush for grout, shower door tracks, hard to get areas and heavily soiled areas. The squeegee will be the most efficient way to clean the rest of the area. Allow plenty of time for the heat to penetrate the surface. This is especially helpful in the shower area if there is tile or grout.

To clean sanitary fixtures, use concentrator nozzle with or without nylon bristle brush. Use a towel to wipe up excess moisture and residue.

To clean the sink and faucets, use nylon detail brush.

Soap Scum

Soap scum dissolves almost immediately under a combination of heat and moisture. Rinse the surface with a small amount of water afterwards or go back over it once more with a cloth towel.

Note: Soap scum sometimes will develop a hard surface from waterborne minerals. If this is the case, use the nylon detail brush to break up this surface - or spray or wipe first with lemon, vinegar or seltzer soda water to soften the minerals.

Moving too slowly can dry out the soap scum and cause it to granulate on the surface. The surface will have a gritty feel. If this happens, apply vapor to the surface with the nylon bristle brush again and re-clean.

Blinds

Use the nylon detail brush to clean blinds. Move the brush over the surface, allowing enough time for the vapor to penetrate. Work quickly on PVC blinds. Test for color fastness on fabric blinds before using.

Refrigerator

Use the concentrator nozzle alone to blow away dirt in the ice machine and on door seals. The vapor will not dry out or crack the seals as chemicals often do. Can openers and other kitchen equipment can be easily cleaned with the nylon detail brush on the concentrator nozzle to get into all the nooks and crannies.

To clean microwaves or other small appliances use the nylon detail brush for small areas. Do not inject steam into the vent openings of the product.

CAUTION: When cleaning small electrical appliances always unplug them from outlet before cleaning.

OPERATING INSTRUCTIONS

Using the Micro Fiber Cloth

Micro fiber cloths allow deep-down streak-free cleaning with only water! The cloth's static charge attracts more dust and retains it. The result is a gleaming smear free finish. The micro fiber cloth can be used dry as a duster or dampened with water for all dirty surfaces. Use after steaming your chrome fixtures for a gleaming streak free shine.

The micro fiber cloth can be used on all surfaces such as: bathroom tiles, kitchen counters, mirrors, glass, stainless steel, plastics, etc.

Care & Cleaning of Micro Fiber Cloth

Before use: Wash in hot water with detergent and rinse well and let dry. Do not use fabric softeners or bleach. Do not put in dryer or iron. Do not use with cleaning products such as glass cleaners, etc. If this happens, wash the cloth and rinse well.

Tips On How To Use Your Steam

Cleaner

Water

- Use tap water for all your cleaning needs.
- If you live in an area with hard water, use demineralized/distilled water when steaming light colored fabrics to eliminate the possibility of hard water stains.

IMPORTANT: Do **NOT** add cleaning solutions, scented perfumes, oils or any other chemicals to the water used in this appliance. **Use tap water or distilled/purified water if the tap water in your area is very hard.**

Efficient Work

- For vertical surfaces, wipe always from the top down, in this way the dirty water will not soil surfaces already cleaned.
- Avoid changing brushes back and forth while cleaning. Start with the smallest brush to clean tight spots and corners first.
- Wipe dirt as soon as possible, otherwise it will dry and re-adhere to the surface.

Hints

The Steam Bottle has many uses many of which will not be mentioned in this owner's manual. This is meant only to give you a general idea of what can be achieved with the unit. However, the ways in which to use the units and the brushes are in most cases universal. It is most helpful to always have the micro fiber cloth or a terry cloth towel or paper towel ready to use for removal of moisture and residue. 100% white cotton towels work best.

You can clean the brushes with your steam cleaner. When cleaning the brushes, use a pair of pliers to hold the brushes or place in the basket of your dishwasher.

Note: Wipe immediately before the cleaned area dries.

Care & Maintenance

CAUTION: This appliance must be unplugged from the electrical outlet before performing any cleaning or maintenance tasks on the unit.

- Let the appliance cool down completely before cleaning or storing.
- Empty all water from the water tank after each use.
- Store in a dry, cool place with the filling hole open.
- A periodic rinse of your steam cleaner will free it from deposits. This is recommended every 10 tankfills to free up any scale deposits. Fill the water tank with water and shake vigorously. Tilt the cleaner upside down to empty the water tank and any scale deposits.

FEATURES OF STEAM BOTTLE

Your **Steam Bottle** is a very versatile tool. Used correctly it will help make many household cleaning tasks faster and easier. Be sure to carefully read all the information contained in this booklet before using this appliance.

High temperature steam can make it easier to remove stubborn household dirt from hard surfaces such as ovens, stove tops, kitchen counters, sinks, tubs, bathroom tiles, windows and mirrors without the need for harsh chemical cleaners. The appliance has various attachments which enable it to be used for cleaning different types of surfaces such as:

1. Upholstery, sealed grout, bathroom/kitchen tile, stovetops.
2. Easily cleans difficult to reach areas with the concentrator such as faucets, etc.
3. Ideal for windows, mirrors, glass doors, etc.
4. Fabrics, window coverings, pillows, bedding etc.
5. Hard surface areas such as counters, sinks, shower door tracks, etc.



CAUTION: Press steam trigger intermittently no more than once every 1 or 2 seconds. Rapid pressing in succession will cause water leaking and spitting which could then burn the user's hand. Wait for steam pressure to reduce before pressing steam trigger again. By pressing intermittently you will note a rhythm for maintaining a continuous flow of steam without any water dripping or leaking.

NOTE: First usage may require 6-10 rapid pushes on steam push button before steam exits. Keep pressing for a few seconds until steam has developed from first rapid depressing of steam trigger, then you can continue intermittent pressing of steam trigger as detailed above.

IMPORTANT: Do **NOT** add cleaning solutions, scented perfumes, oils or any other chemicals to the water used in this appliance. **Use regular water or distilled/purified water if the tap water in your area is very hard.**

OPERATING INSTRUCTIONS

Components

Power "On" Light (red): This light will illuminate when the unit is plugged into the 120V wall outlet and will remain on until the unit is unplugged.

CAUTION: Read the instructions for "Filling the Water Tank" before opening the Water Tank Cover. **Always unplug before filling.**

Filling Your Steam Bottle With Water

IMPORTANT: Always insure that the unit is "UNPLUGGED" from the wall receptacle prior to initial filling or re-filling the water tank. **Use tap water or distilled/purified water if the tap water in your area is very hard.**

WARNING: Never attempt to fill this unit under a water tap, always use the filling flask that is provided.

Failure to follow these steps will cause the water tank to overfill and may pose an electrical safety hazard.

Step 1: Before filling the Steam Bottle, make sure that the unit is **NOT** plugged in.

Step 2: Hold unit upside down and remove the water tank filling plug. (See caution above.)

Step 3: Using the filling flask add 8 US Fl. Oz. (240 ml) of water. **Do not overfill.** (Fig. 1) Replace the water tank filling plug making sure that it is firmly in place.



Fig. 1

To Use Your Steam Bottle

Step 1: Connect desired attachments onto the concentrator nozzle

Step 2: Plug the unit into a standard (120 volt, grounded) wall receptacle. The red power light will now illuminate.

Step 3: Allow approximately **30 - 60 seconds** for unit to reach its working temperature. The blue steam ready light will illuminate to indicate that the steam is ready.

Step 4: Upon initial use, some water will come out from the nozzle of the attachment. This is normal.

IMPORTANT: When the Steam Bottle has run out of water, steam output will decrease and then cease.

NOTE: First usage may require 6-10 rapid pushes on steam push button before steam exits. Keep pressing for a few seconds until steam has developed from first rapid depressing of steam trigger, then you can continue intermittent pressing of steam trigger as detailed above.

IMPORTANT: Do **NOT** add cleaning solutions, scented perfumes, oils or any other chemicals to the water used in this appliance. **Use regular tap water or distilled/purified water if the tap water in your area is very hard.**

CAUTION: Press steam trigger intermittently no more than once every 1 or 2 seconds. Rapid pressing in succession will cause water leaking and spitting. Wait for steam pressure to reduce before pressing steam trigger again. By pressing intermittently you will note a rhythm for maintaining a continuous flow of steam without any water dripping or leaking.

Using the Fixed Concentrator Nozzle

Using the steam cleaner with the concentrator nozzle is very useful for cleaning surfaces that are difficult to reach. (Fig. 2) It is ideal for radiators, door and window jambs, shutters and sanitary fixtures.

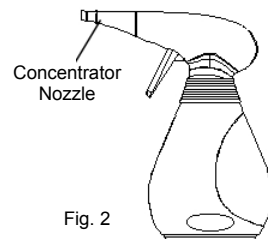


Fig. 2

OPERATING INSTRUCTIONS

Nylon Detail Brushes (x4)

Four nylon detail brushes are included with your steam cleaner to enable you to use a different one for different areas in your home. (Fig. 3)

They are best for any task requiring concentrated medium-pressure steam with additional rubbing action to loosen embedded dirt such as cleaning grout in between the tiles, ceramic and marble. To use: Push the nylon detail brush onto the end of the concentrator nozzle.

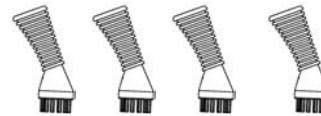


Fig. 3

Triangle Towel Adapter

A small triangle towel adapter is included with your unit for use on small surfaces or upholstery.

CAUTION: Always determine the color-fastness of any fabric - especially with reds or blues - by taking a clean, moist, warm towel and gently rubbing a small area as far down on the back or other out of the way place on the furniture as possible. If color comes off on the towel, you may need to have the piece dry cleaned.

To use: Push the triangle towel adapter onto the end of the concentrator nozzle. Place the triangle towel over the triangle towel adapter.



Extended Concentrator

The extended concentrator can be used to clean under toilet bowl rims or in hard to reach places.

To use: Push the extended concentrator onto the end of the concentrator nozzle.



Squeegee

This attachment is very useful for cleaning large windows, plastic material, ceramic, tiled or marble surfaces.

To use: Attach the squeegee to the window squeegee handle. With the steam cleaner, apply steam abundantly to the surface and then remove excess water and dirt with the wiping edge.

CAUTION: When cleaning windows, always avoid any sudden changes in temperature to prevent glass breakage or cracks.

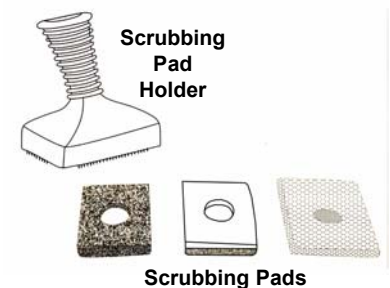


NOTE: If using the steam cleaner with the nozzle pointing downwards, you will need to return the unit to an upright position every now and again to enable the tube inside the water tank to dip into the water reservoir, thereby preserving the flow of water to the heating element.

Scrubbing Pads & Holder

This attachment is very useful for cleaning counters, ceramic, tiled or marble surfaces.

To use: Attach the scrubbing pad holder onto the concentrator nozzle. Then press the scrubbing pad onto the base of the scrubbing pad holder and twist slightly. This will help the scrubbing pads stay on more securely.



Free Manuals Download Website

<http://myh66.com>

<http://usermanuals.us>

<http://www.somanuals.com>

<http://www.4manuals.cc>

<http://www.manual-lib.com>

<http://www.404manual.com>

<http://www.luxmanual.com>

<http://aubethermostatmanual.com>

Golf course search by state

<http://golfingnear.com>

Email search by domain

<http://emailbydomain.com>

Auto manuals search

<http://auto.somanuals.com>

TV manuals search

<http://tv.somanuals.com>