

**FOR YOUR SAFETY
READ ALL INSTRUCTIONS
BEFORE USING THIS APPLIANCE**

EURO-PRO 

EP8020

STEAM GENERATOR IRON

PROFESSIONAL TYPE IRONING SYSTEM
WITH DETACHABLE WATER TANK
FOR HOUSEHOLD USE ONLY



USE AND CARE INSTRUCTION MANUAL
READ BEFORE USING THE IRONING SYSTEM

CONGRATULATIONS!

YOU ARE THE OWNER OF THE ULTIMATE IN MODERN IRONING AND PRESSING EQUIPMENT. FOR YOUR SAFETY AND TO FULLY ENJOY THE ADVANTAGES OF YOUR APPLIANCE, PLEASE TAKE A FEW MINUTES TO READ ALL THE IMPORTANT SAFEGUARDS AND "USE & CARE INSTRUCTIONS". KEEP THIS MANUAL HANDY FOR EASY REFERENCE. PLEASE REVIEW THE PRODUCT WARRANTY AND MAIL THE OWNER REGISTRATION FORM

EURO-PRO Operating LLC
94 Main Mill Street, Door 16
Plattsburgh, NY 12901
USA

EURO-PRO Operating LLC
4400 Bois Franc
St. Laurent, Quebec H4S1A7
CANADA

IMPORTANT SAFEGUARDS

When using your **Steam Generator Iron**, basic safety precautions should always be followed. Read carefully the following instructions as they provide important information concerning how to install, use and care for this appliance.

1. Use steam generator iron only for its intended use.
2. Use ironing system only for its intended use.
3. To protect against a risk of electric shock, do not immerse the iron or any part of the ironing system in water or any other liquids.
4. The ironing system (iron and steam generator) should always be turned OFF before plugging into or unplugging from wall outlet. Never pull power cord to disconnect from outlet; instead, grasp plug and pull to disconnect.
5. Do not allow cord to touch hot surfaces. Let the ironing system cool completely before putting away or opening water tank (removing safety cap). Wrap cord loosely around the ironing system when storing.
6. Always disconnect ironing system from electrical outlet when filling with water or emptying and when not in use. Always turn the safety cap slowly when opening the water tank.
7. Do not operate the ironing system with a damaged cord, plug or if the iron or any other part of the system has been dropped or damaged. To avoid risk of electric shock, do not disassemble or attempt to repair the ironing system. Return the unit to **EURO-PRO Operating LLC** (see warranty) for examination, repair or replacement. Incorrect reassembly or repair can cause a risk of electrical shock or injury to persons when the ironing system is used.
8. Close supervision is necessary for any appliance being used by or near children. Do not leave ironing system unattended while connected or while on an ironing board. Always position the iron flat on the silicone rubber posts.
9. Burns can occur from touching hot metal parts, hot water or steam. Use caution when turning the system upside down, as there may be hot water in the unit. Never direct steam at any person, especially when using the iron in the vertical position. The steam is very hot and can cause burns.
10. The hot iron base (soleplate) must always rest on the non combustible silicone rubber rests on top of the steam generator.
11. Do not operate in the presence of explosive and/or flammable fumes.
12. This appliance is intended only for household use. Follow all user instructions in this manual.

WARNING: The power cord on this product contains lead, a chemical known to the State of California to cause birth defects or other reproductive harm. ***Wash hands after handling.***

SPECIAL INSTRUCTIONS

1. To avoid a circuit overload, do not operate another high-wattage appliance on the same circuit simultaneously with the steam generator iron.
2. If an extension is absolutely necessary, a 15-ampere rated cord with a polarized plug should be used. Cords rated for less amperage may overheat. Care should be taken to arrange so that it cannot be pulled on or tripped over.
3. Do not leave iron unattended when the system is connected to a power supply/electrical outlet.

POLARIZED PLUG: This appliance has a polarized plug (one blade is wider than the other). As a safety feature, this plug will fit into a polarized outlet only one way. If the plug does not fit fully into the outlet, reverse the plug. If it still does not fit, contact a qualified electrician. Do not attempt to defeat this safety feature.

SAVE THESE INSTRUCTIONS FOR HOUSEHOLD USE ONLY



Even if you have used a steam generator iron before, please read all instructions and safeguards in the Use and Care Instruction Book. In addition, please note the following user tips:

USING STEAM

PLEASE NOTE: Steam performance improves after the first 6-8 hours of usage. The steam power increases and initial condensation at maximum temperature is reduced.

1. Make sure the temperature setting of the iron is within the steam range on the temperature selector.
2. Turn power on for iron and steam generator. Before starting to use steam, make sure the Steam Ready Light (2) is "**ON**", indicating that steam is available.

NOTE: Trying to use steam before the Steam Ready Light (2) is "ON" can cause water drops in the steam coming out of the iron.

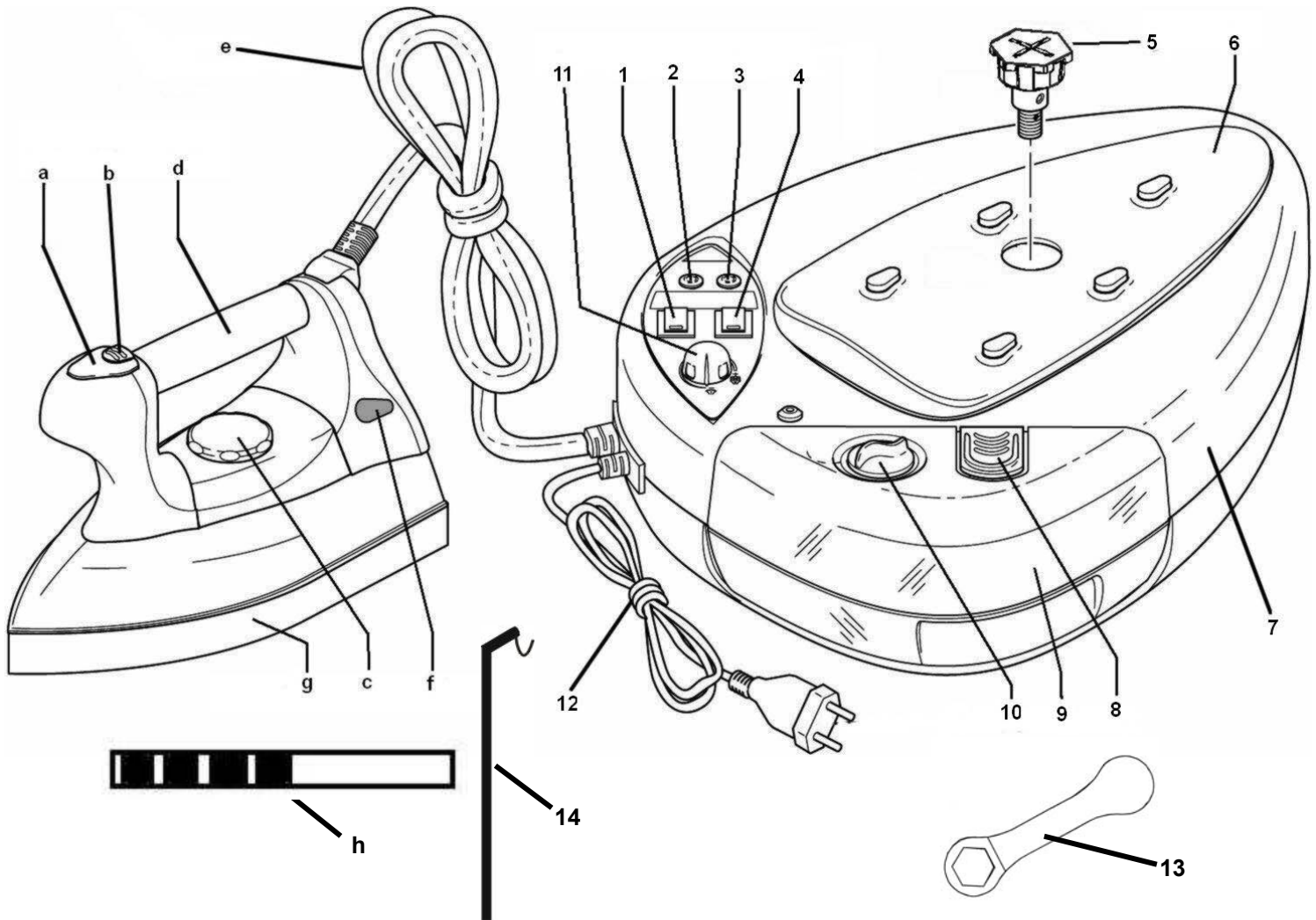
CLEARING THE INITIAL CONDENSATION:

3. Clear the initial condensation by pressing the Steam Button (A) up to 3 seconds. Repeat if necessary.

IMPORTANT NOTE:

4. While using the ironing system, if steam has not been released for more than approximately 5 minutes, the hose has cooled and any steam remaining in the hose from the last use might condense. Clear this condensation by pressing Steam Button (A) before proceeding to use the iron.

STEAM GENERATOR IRON MODEL EP8020



Steam Tank (Base)

1. Steam On/Off Rocker Switch
2. "Steam Ready" Indicator Light
3. Water Level Indicator Light
4. Iron On/Off Rocker Switch
5. Steam Pressure Valve
6. Iron Rest
7. Steam Base Tank
8. Locking Device (Used for Tank Removal)
9. Removable Water Tank
10. Rotating Cap, Used to Add More Water
11. Steam Control Knob
12. Power Cord
13. Key to Open Steam Pressure Valve (#5)
14. Cord Holder

Iron

- a. Steam Button
- b. Continuous Steam Lock-on Button
- c. Temperature Control Knob
- d. Cork Handle
- e. Steam Hose
- f. Temperature Indicator Light
- g. Soleplate
- h. Litmus Paper (See Instructions to Check Water Hardness, Page 4)

STEAM GENERATOR

IMPORTANT SUPPLEMENTARY USER INFORMATION

Read all instructions before using the Steam Generator Iron and follow all instructions and safeguards carefully.

1. A WORD ON WATER

Check the water hardness in your home with the litmus paper. (Please note that you can only use the litmus paper once.)

- Immerse the litmus paper in a glass of water for one second.
- Wait until the paper is dry and refer to the scale here below.

| | | |
|---------|-------------------|-----------------------------------|
| ■ □ □ □ | soft water | Use tap water |
| ■ ■ □ □ | medium hard water | |
| ■ ■ ■ □ | hard water | Use demineralized/distilled water |
| ■ ■ ■ ■ | very hard water | |

For best results EURO-PRO recommends using 100% demineralized/distilled water.

DO NOT USE WATER PROCESSED THROUGH A HOME WATER SOFTENING SYSTEM OR BOTTLED MINERAL WATER.

If you choose to use regular tap water, make sure that the chloride (CL) level of your local water supply does not exceed 8mg/liter. In many areas, the chloride level exceeds 8mg/liter. Use of tap water with high chloride levels will adversely affect the life expectancy of your steam generator. Tap water can be mixed with demineralized/distilled water to lower the chloride level. For best results make sure to use the right proportions to bring the chloride level to 8mg/liter or less.

2. FOR BEST RESULTS DO NOT LEAVE HOT IRON RESTING IDLE ON IRON REST (6) FOR LONG PERIODS OF TIME

The life-span of your EP8020 will be reduced if the iron is left idle at high temperatures for extended periods. If iron is not in use, reduce its temperature to the lowest temperature setting on the Temperature Control Knob (c).

3. WARRANTED FOR REGULAR HOUSEHOLD USE

While the EP8020 is a professional type ironing system, it is intended for and warranted only for normal household use. Iron and/or steam generator should not be used for more than 15 hours per week in approximately 3 hour intervals.

INSTRUCTIONS FOR USE

Your new Ironing System offers the ultimate in modern ironing. Read carefully all the important safeguards (page 1) and all the instructions in the user manual before using your Ironing System. Follow all the instructions.

1. WARNINGS:

- Never leave the unit unattended while plugged in. Always disconnect from electrical power source.
- You must always unplug (disconnect) the unit when you have finished using it and:
 - A) Before any cleaning or maintenance.
 - B) Before filling and emptying the water tank/steam generator.
 - C) When you leave the room, even if only for a few minutes.
- Always place the iron on the iron rest (6) when not in use.
- Never use the ironing system if the iron or the steam generator have been dropped. To avoid risk of electric shock, do not disassemble or attempt to repair the ironing system. Return the unit to **EURO-PRO Operating LLC** (see warranty) for examination, repair or replacement.
- Do not stretch out the power cord (12) and/or steam hose (e) while ironing. Do not use the appliance if a power cord (12) and/or steam hose (e) is damaged. If the power cord (12) or steam hose (e) show signs of wear or damage, please return the unit to **EURO-PRO Operating LLC** (see warranty) for examination, repair or replacement.
- Read the “**IMPORTANT SAFEGUARDS**” listed on page 1 and all special instructions and follow carefully.

2. DRY IRONING:

1. Place your steam generator on a solid flat surface.
2. Plug in unit. Press the Iron ON/Off Rocker Switch (4) which lights up to indicate that the iron is “ON”.
3. Set the Temperature Control Knob (c) according to the garment label or use the temperature setting table included in the user’s manual as a guide.
4. The Temperature Indicator Light (f) will go on and will turn off when the iron has reached the desired temperature.
5. You may iron without steam at any temperature setting.

3. IRONING WITH STEAM:

1. Plug the appliance into a 110/120 V electrical outlet.
2. Press the Iron ON/Off Rocker Switch (4) to the “ON” position. Press the Steam ON/OFF Rocker Switch (1) to activate steam generator.
3. When planning to use steam, make sure to set the Temperature Control Knob (c) in the area designated for use with steam. i.e. between the two “●●” and three “●●●” dots on the Temperature Control Knob (c). (See temperature setting table included in the user’s manual as a guide.)
4. The Steam Ready Indicator Light (2) will come on in 8-10 minutes indicating steam is available. The Steam Ready Indicator Light (2) will go on and off while the generator is in use.
5. Press Steam Button (a) to activate the steam release.

NOTE: Trying to use steam before the Steam Ready Indicator Light (2) is “ON” can cause water drops in the steam coming out of the iron.

4. CONTINUOUS STEAM LOCK-ON BUTTON:

If you need a steady steam supply, press the Steam Button (a) down and then push the Continuous Lock-On button (b) backwards to lock the Steam Button (a) in. To unlock, press the Steam Button (a) down again and push the Continuous Steam Lock-On Button (b) forwards.

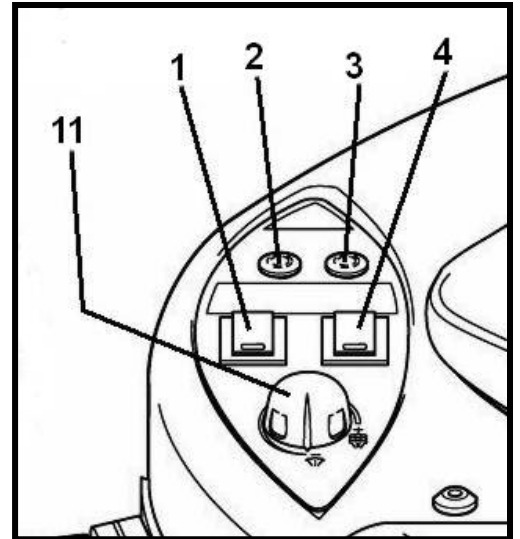
NOTE: Before ironing, point iron away from table, press Steam Button (a) to clear initial condensation.

WARNING: Never direct steam from the iron at yourself or another person. Special care must be taken when the iron is used in a vertical position. The steam is very hot and can cause burns.

5. STEAM:

A. TO EMPTY/RELEASE STEAM FROM THE GENERATOR:

1. Press Iron On/Off Rocker Switch (4) into the “ON” position.
2. Press the “Steam On/Off Rocker Switch (1) into the “Off” position.
3. Release all remaining steam in the steam generator by pressing the “Steam Button” (a) on the iron.
4. Press the Iron ON/OFF Rocker Switch (4) into the “OFF” position.
5. Unplug the appliance from the wall outlet. Allow it to cool a minimum of 5 minutes. Make sure that both the Iron ON/OFF Rocker Switch (4) and the Steam ON/OFF Rocker Switch (1) are in the “OFF” position.



B. FILLING/REFILLING THE REMOVABLE WATER TANK (9) :

The tank can be filled/refilled using a bottle or similar object, or by taking it off the base altogether. To fill it using a bottle, just open the rotating cap (10) and then replace the rotating cap (10) after you have filled the water tank.





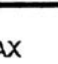
To fill/refill the removable water tank (9) by removing the tank from the base, proceed as follows:

1. Release the Locking Device (8) on the removable water tank (9) and remove the water tank by lifting it up.
2. Open the Rotating Cap (10) and fill with tap or demineralized/distilled water (maximum capacity 2 1/2 cups/625 ml).
3. Re-close the Rotating Cap (10) and put the removable water tank (9) back on the Steam Base Tank (7), pushing it down until the locking device (8) clicks.
4. Your appliance is now ready to use.

C. WHEN TO REFILL THE WATER TANK/STEAM GENERATOR:

For best results, refill water tank/steam generator to maximum before every usage, when steam power is recognized lower while in use or when Water Level Indicator Light (3) goes “On”. Follow the water filling/refilling instructions above.

D. TEMPERATURE SETTINGS:

| Check article labels for instructions i.e., do not iron chlorofibre. | | |
|--|---|------------------------------------|
| FABRICS | TEMPERATURE RANGE ON THE IRON CONTROL KNOB | SUGGESTED AMOUNT OF STEAM |
| SYNTHETIC: Acetates Acrylics Acrilan Creslan Orlon Metallics Sheer Synthetic Polyester Dacron Fortrel Perma Press Nylon | MIN  | Dry Ironing (without steam) |
| Silk |  | Pure silk sometimes requires steam |
| Wool |  | Humid Steam |
| Cotton |  | Normal Steam |
| Linen | MAX  | Super dry Steam |

- Always read garment labels and follow directions.
- For maximum efficiency, iron garments requiring the lowest temperature settings first as the iron heats up faster than it cools.
- If there are no instructions included with the garment, we suggest that you follow the table above as a guide (except when any fabric has an applied finish, gloss, etc. where lower temperatures might be required).
- Always iron blends (fabrics made of two or more types of fibers) using the heat setting appropriate for the fabric requiring the lowest temperature setting.

6. IMPORTANT PRESSING TIPS:

A. USE STEAM INTERMITTENTLY:

Your Steam Generator Iron features a professional type iron with steam holes placed in the front of the iron soleplate. Correct ironing procedure involves steaming the fabric with the front end of the iron followed by pressing and drying with heat from the rear of the iron. For best results, garments should be dry after pressing to avoid re-wrinkling due to lingering dampness. Therefore, we recommend that you use steam as required, but not continuously.

B. PRESSING DIFFICULT NATURAL FIBERS (I.E. 100% COTTON DRESS SHIRTS, ETC.):

While your Steam Generator offers high quality professional type steam, some fabrics may require additional moisture for best results. You may want to press cotton shirts while still damp or spray with demineralized/distilled water, prior to ironing.

C. DRY STEAM V.S. HUMID STEAM:

Because steam is produced in a generator and not in the iron (as with regular household irons) you can select dry or humid steam. The temperature of the iron setting determines the type of steam. At high temperatures, the iron delivers very dry steam. Lower temperature settings (within steam range) offer humid steam.

D. USER BENEFITS:

For best pressing results, you have the flexibility to choose the type of steam and not only the iron temperature. A balance should be maintained between the humidity (low iron temperature) required to loosen fibers and the need for heat (higher iron temperature) to flatten/shape and dry the fibers.

Instructions for specific iron temperature settings should be treated as guidelines only. We recommend that you experiment with each fabric. The EP8020 can produce humid steam at relatively low temperature settings where regular household irons would release water. Also, the very dry steam produced at high iron temperature setting (3 dots “●●●”) can be used on some fabrics where normally the use of steam is prohibited.

STORAGE/CLEANING AND MAINTENANCE

STORAGE:

- Always unplug the power cord from the wall outlet when not in use.
- Always store in a dry place away from children's reach.
- Always drain the Removable Water Tank (9) before storing.
- Always let your ironing system cool completely before putting away.
- Do not allow the electrical cord and steam hose to touch hot surfaces.
- Wrap the cord loosely around the ironing system when storing.


CLEANING/MAINTENANCE:

- The cord must be unplugged from the wall outlet before starting to clean any part of the appliance.
- Make sure that the Iron and Steam Generator are COLD before starting to clean. Allow at least twelve (12) hours for the unit to cool after it has been used.

IRON:

- Clean the steam iron only when it is cold.
- Never immerse the steam iron in water or any other liquids.
- Do not use scouring pads, abrasives or harsh cleaners.
- Prepare a paste using mild scouring powder and a little water. Apply a small amount of the paste to the soleplate with a damp cloth. Rub the soiled area and then wipe clean with a clean damp cloth.
- If using soleplate cleaners, make sure that you follow label instructions.
- Use a soft cloth dampened with water and mild household detergent to wipe the outer shell of the iron.
- Dry soleplate and iron shell thoroughly after cleaning.

STEAM GENERATOR/STEAM BASE TANK (7):

Thanks to the professional steam heating system  , which ensures that the heating element never comes into contact with water, the elements cannot be damaged with mineral deposits.

Nevertheless, if tap water is used in the appliance, it should be rinsed out on a regular basis. This will extend the life and trouble-free use of the appliance.

1. Unplug the power cord (12) from the wall outlet.
2. Allow the appliance to cool down completely, approximately 12 hours.
3. Take off the removable water tank (9).
4. Unscrew the steam pressure valve (5) using the special key (13) included.
5. Fill the steam boiler with about 3.3 oz (100 ml.) of water and rinse the appliance out thoroughly.
6. Before replacing the steam pressure valve (5), pour into the boiler 8 oz (250 ml.) of water.

TROUBLESHOOTING

Do not operate the ironing system with a damaged cord, plug or if the iron or any other part of the system has been dropped or damaged. To avoid the risk of electric shock, do not disassemble or attempt to repair the ironing system. Return the appliance to **EURO-PRO Operating LLC** (see Warranty) for examination and repair. Incorrect re-assembly or repair can cause a risk of electric shock or injury to persons when the ironing system is used.

| PROBLEM | POSSIBLE CAUSES | REMEDY |
|---|--|---|
| No steam is released through the iron | <ol style="list-style-type: none"> 1. Steam ON/OFF Rocker Switch is not in the "ON" position. 2. Water Tank/Steam Generator is empty. 3. Unit is not plugged in. 4. Steam is not visible because the temperature of the soleplate is at maximum & room temperature is high. 5. Generator is NOT fully heated. | <ol style="list-style-type: none"> 1. Turn Steam ON/OFF Rocker Switch "ON" . 2. Fill with water as per instructions. 3. Make sure both Steam & Iron ON/OFF Rocker Switches are in the "OFF" position and plug unit in. 4/5. The heating time for the generator is approximately 8-10 minutes . Watch for Steam Ready Light to come on indicating that steam is ready. |
| The soleplate remains cold | <ol style="list-style-type: none"> 1. Iron is not switched ON. 2. Temperature is set at "Minimum". | <ol style="list-style-type: none"> 1. Turn Iron ON/OFF Rocker Switch "ON" . 2. Turn the temperature dial to the appropriate setting. |
| Drops of water leak from the iron soleplate | <ol style="list-style-type: none"> 1. Soleplate temperature is too low to iron with steam. 2. Generator is NOT fully heated. | <ol style="list-style-type: none"> 1. Turn the temperature dial to the marks between 2 and 3 dots. . 2. Wait for generator to be fully heated. |
| Dirty or yellow steam is coming out of the iron | <ol style="list-style-type: none"> 1. Residue in water tank. 2. Not using demineralized/distilled water. | <ol style="list-style-type: none"> 1. Clean steam generator as per instructions. 2. Use demineralized/distilled water after cleaning the tank. |
| Yellowing of generator | <ol style="list-style-type: none"> 1. Yellowing occurs with normal aging. | |
| Excessive yellowing | <ol style="list-style-type: none"> 1. Leaving iron idle on top of generator at high temperature for long periods of time. | |



Model EP8020

LIMITED WARRANTY

EURO-PRO Operating LLC warrants this product to be free from defects in material and workmanship for a period of ONE (1) year from the date of purchase when utilized for normal household use by the original purchaser only. The attached Warranty Registration Card which must be filled out and returned within 10 days of purchase. This is essential for your Warranty to be effective should any problem arise with this product.

Should any defect covered by the terms of the limited warranty be discovered within ONE year, **EURO-PRO Operating LLC** will repair or replace any defective part provided the unit is returned by the original purchaser, freight prepaid, to **EURO-PRO Operating LLC**, 94 Main Mill Street, Door 16, Plattsburgh, NY 12901. Proof of purchase date and \$ 12.95 for handling and return packing/shipping charges must be included.

The liability of **EURO-PRO Operating LLC** is limited solely to the cost of the replacement parts or the complete unit at our option. LABOUR CHARGES ARE NOT INCLUDED.

This warranty does not cover normal wear of parts and apply to any unit that has been tampered with or used for commercial purposes. This limited warranty does not cover damage caused by misuse, negligent handling or damage due to faulty packaging or mishandling in transit (by any common courier).

This warranty is extended to the original purchaser of the unit and excludes all other legal and/or conventional warranties. The responsibility of **EURO-PRO Operating LLC**, if any, is limited to the specific obligations expressly assumed by it under the terms of the limited warranty. In no event is **EURO-PRO Operating LLC** liable for incidental or consequential damages of any nature whatsoever. Some states do not permit the exclusion or limitation of incidental or consequential damages, so the above may not apply to you. This warranty gives you specific legal rights, and you may have other rights which vary from state to state.

PURCHASER _____

DATE OF PURCHASE _____

DEALER _____

IMPORTANT: Carefully pack item to avoid damage



OWNERS REGISTRATION CARD FOR CANADIAN CONSUMERS ONLY

Please complete and return within ten (10) days of purchase in order to validate the foregoing Limited Warranty. The registration will enable us to contact you in the event a product defect is discovered. By returning this card, you acknowledge to have read and understood the instructions for use and warnings set forth in the accompanying instructions. RETURN TO:

U.S.: **EURO-PRO Operating LLC**, 94 MAIN MILL STREET, DOOR 16, PLATTSBURGH, NY 12901

CANADA: **EURO-PRO Operating LLC**, 4400 BOIS FRANC, ST. LAURENT, QUEBEC H4S 1A7

PURCHASER: _____

ADDRESS: _____

CITY: _____ STATE/PROV: _____

DATE OF PURCHASE: _____ MODEL: **EP8020**

NAME & ADDRESS OF DEALER: _____

Free Manuals Download Website

<http://myh66.com>

<http://usermanuals.us>

<http://www.somanuals.com>

<http://www.4manuals.cc>

<http://www.manual-lib.com>

<http://www.404manual.com>

<http://www.luxmanual.com>

<http://aubethermostatmanual.com>

Golf course search by state

<http://golfingnear.com>

Email search by domain

<http://emailbydomain.com>

Auto manuals search

<http://auto.somanuals.com>

TV manuals search

<http://tv.somanuals.com>