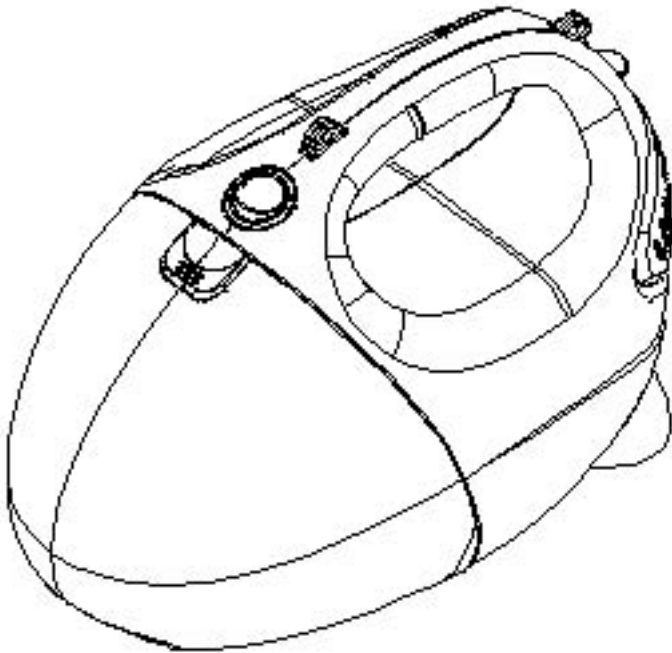


BIG Shark

OWNER'S MANUAL

Model EP134
115V~, 60Hz., 7.8 Amps



IMPORTANT SAFETY INSTRUCTIONS

When using your **EURO-PRO BIG SHARK**, basic safety precautions should always be observed, including the following:

1. Read all instructions before using your **BIG SHARK** hand vacuum.
2. Use the system only for its intended use.
3. To protect against a risk of electric shock, do not immerse any part of the system in water or other liquids.
4. Never yank cord to disconnect from outlet; instead, grasp plug and pull to disconnect.
5. **Do not** allow cord to touch hot surfaces.
6. **Do not** run appliance over cord.
7. **Do not** operate the system with a damaged cord or plug, or if the appliance or any other part of the system has been dropped or damaged. To avoid the risk of electric shock, do not disassemble or attempt to repair the **BIG SHARK**. Return the system to **EURO-PRO** Corporation (see warranty) for examination and repair. Incorrect re-assembly or repair can cause a risk of electrical shock or injury to persons when the **BIG SHARK** is used.
8. Close supervision is necessary for any appliance being used by or near children. Do not leave the system unattended while connected.
9. Keep hair, loose clothing, fingers and all parts of body away from opening and moving parts.
10. **Do not** use to pick up flammable or combustible liquids such as gasoline or use in areas where they may be present.
11. **Do not** pick up anything that is burning or smoking such as cigarettes, matches or hot ashes.
12. Use extra care when cleaning on stairs.
13. **Do not** use the hand vacuum without the dust cup filter in place.
14. This appliance is intended only for household use. Follow all user instructions in this manual.

To reduce the risk of fire, electric shock, or injury:

- **Do not** leave the **BIG SHARK** plugged in when unattended. Unplug the electrical cord when not in use and before servicing.
- **Do not** allow to be used as a toy. Close attention is necessary when used by or near children, pets or plants.
- Use only as described in this manual. Use only manufacturer's recommended accessories.
- **Do not** pull cord, use cord as a handle, close a door on cord, or pull cord around sharp edges or corners. Keep cord away from heated surfaces.
- Use **only** extension cords UL-rated or cUL at 15 amperes. extension cords rated for less amperage may overheat. Care should be taken to arrange the cord so that the cord cannot be pulled or tripped over.
- Turn off all controls as applicable before unplugging from electrical outlet.
- **Do not** unplug by pulling on cord. To unplug, grasp the plug, not the cord.
- **Do not** handle plug or hand vacuum with wet hands or operate without shoes.
- **Do not** put any objects into openings. Do not use with any opening blocked. Keep free of dust, lint, hair and anything else that may reduce air flow.
- Store your appliance indoors in a cool, dry area.
- Keep your work area well lit.
- **Do not** immerse the hand vacuum into water or other liquids.
- Keep end of hose, wands and other openings away from your face and body.
- Use only on dry surfaces.
- Using improper voltage may result in damage to the motor and possible injury to the user. Correct voltage is listed on rating label.

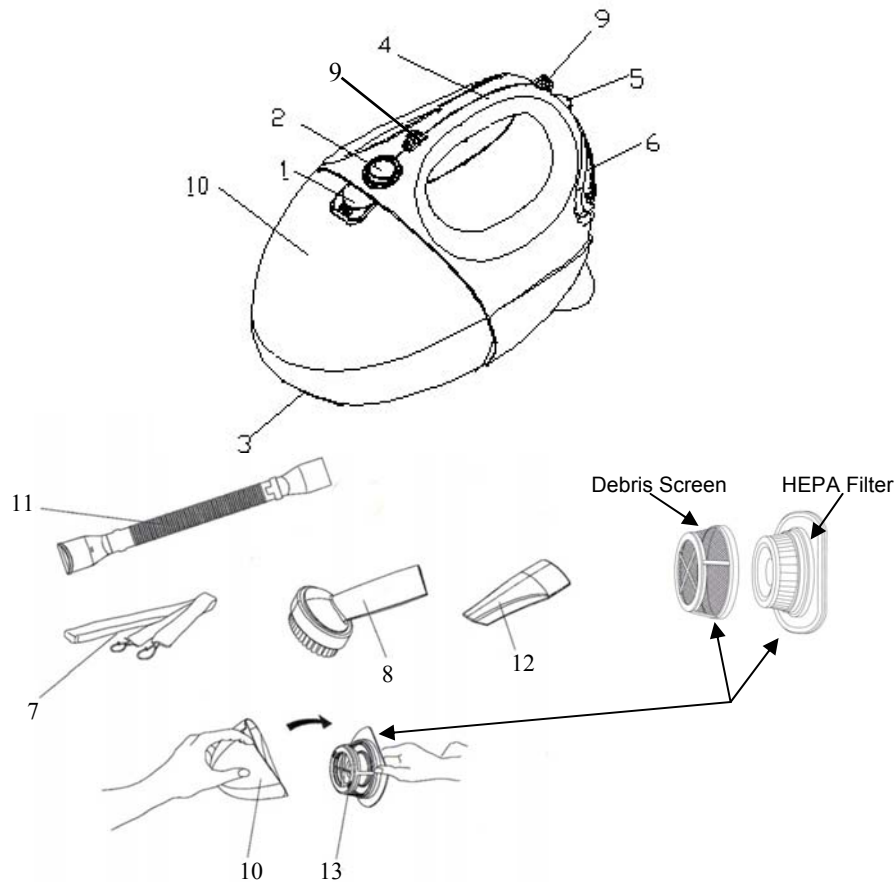
SAVE THESE INSTRUCTIONS

For Household Use Only

WARNING: To reduce the risk of electric shock, this appliance has a polarized plug (one blade is wider than the other). This plug will fit in a polarized outlet only one way. If the plug does not fit fully in the outlet, reverse the plug. If it still does not fit, contact a qualified electrician to install the proper outlet. Do not modify the plug in any way.

For information or assistance:
USA: **EURO-PRO** Corporation
178 West Service Rd.
Champlain, NY 12919
www.sharkhomecare.com

GETTING TO KNOW YOUR BIG SHARK



1. Push to Open Dust Cup (Container)
2. On/Off Power Switch
3. Suction Hole
4. Handle
5. Exhaust Cover Lock
6. Exhaust Cover
7. Shoulder Strap

8. Oval Brush
9. Holes for Attaching the Shoulder Strap
10. Dust Cup (Container)
11. Flexible Hose
12. Crevice Tool
13. Hepa Dust Cup Filter

Technical Specifications

Voltage: 115V~ 60Hz.
Power: 7.8 Amps, 900 Watts

OPERATING INSTRUCTIONS

Warning: Always unplug from electrical outlet before opening the dust cup (container).

Note: HEPA dust cup filter must be used when operating the hand vacuum.

Using The Unit As A Hand Vacuum

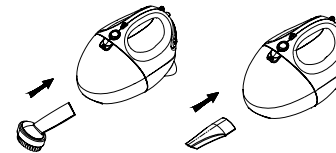
1. To open the dust cup (container), push button and pull out the dust cup. Verify that the HEPA dust cup filter inside, then attach the dust cup (container) to the hand vacuum.



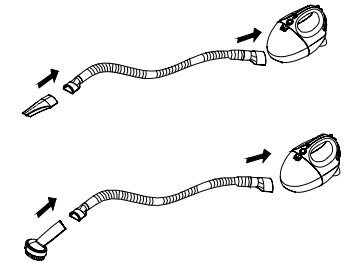
2. To use the Hand Vacuum with the shoulder strap, attach it to the unit as shown below.



3. To attach the crevice tool or oval brush to the Hand Vacuum, push brush into the suction hole, as shown below.



4. To use the flexible hose, push the smaller end of the hose into the suction hole, then attach the desired accessory to the other end of the flexible hose, as shown below.



How To Operate Your Hand Vacuum

1. Hold the hand vacuum firmly in your hand by the Handle.
2. Push the On/Off Power Switch to "On" position.
3. Start vacuuming.

CAUTION: The Hand Vacuum is a very powerful unit. Make sure that you hold it firmly, otherwise it can slip out of your hand and cause injury.

Motor Thermostat

IMPORTANT: This motor is equipped with a motor protective thermostat. If for some reason the vacuum cleaner should overheat, the thermostat will automatically turn the unit OFF. Should this occur, unplug the vacuum cleaner from wall outlet or turn off switch. Allow the unit to cool. To restart, re-plug into wall outlet or turn switch back on.

Cleaning & Changing the HEPA Dust Cup Filter

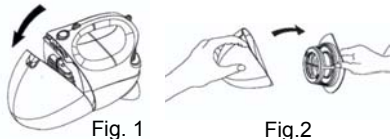
Warning: Always unplug the unit from electrical outlet before opening the Dust Cup (container).

Important: Do **NOT** use the HEPA filter cartridge without the debris screen in place.

Warning: After each Use - Always remove the Filter Debris Screen from the HEPA Dust Cup Filter, then vigorously "TapClean" HEPA Filter until no more dust can be removed.

IMPORTANT, Please Note : The "TapClean" HEPA Dust Cup Filter & Debris Screen will stop most of the tiniest dust particles and airborne allergens from re-entering the air you breathe. In fact it stops 99.97% of all particles as small as 0.3 microns - many times smaller than a human hair!!! Because of this incredible filtration performance, the HEPA Dust Cup Filter will quickly accumulate, inside the white filter folds, many fine dust particles that are difficult to see but which will eventually block or reduce your suction power - if not cleaned properly. This can cause the motor to overheat and the re-settable thermostat to trip. (Should this happen turn off the switch, unplug the unit and allow unit to cool down. Clean the HEPA Filter and Debris Screen as described in this section, then reconnect unit and proceed with vacuuming.)

1. To open the Dust Cup (container), push button and detach the Dust Cup (container). (Fig. 1)
2. Pull out the HEPA Dust Cup Filter or cloth dust cup filter. (Fig. 2)



3. Empty the dust from the Dust Cup (container).
4. Separate the debris screen from the HEPA filter cartridge by grasping the debris screen with one hand and the filter frame with the other and pull apart. (fig. 3)

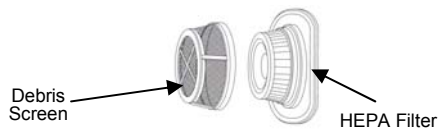


Fig. 3

5. Vigorously "TapClean" the HEPA Dust Cup Filter on a hard surface until no more dust is observed falling out from between the pleats of the filter. (fig. 4)

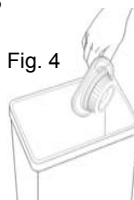


Fig. 4

6. "TapClean" the Debris Screen or rinse under a faucet until clean. (fig. 5) Remember that the Debris Screen must be completely dry before reinstalling in the vacuum.

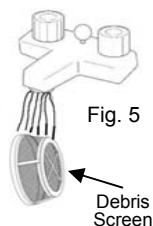


Fig. 5

7. Replace the Debris Screen on the HEPA Dust Cup Filter and reinstall filter assembly in the vacuum. (not shown)

PLEASE NOTE: The white pleated filter material in the HEPA Dust Cup Filter will discolor over time -This is NORMAL and will NOT affect the performance of the filter. If the HEPA Dust Cup Filter is properly "TapCleaned" after each use and suction does not return to 100%, then we suggest that the HEPA filter be "TapCleaned" vigorously until no more dust can be removed, then rinsed under the faucet and allowed to dry for 24 hours before refitting into the vacuum. (Fig. A) **This should be done not more frequently than once every 3 months.**

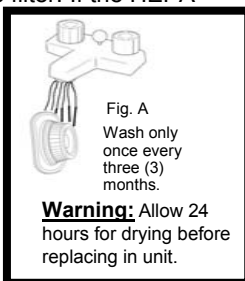


Fig. A

Wash only once every three (3) months.

Warning: Allow 24 hours for drying before replacing in unit.

CAUTION: The suction hole must be open, free of any obstructions at all times. Otherwise, the motor will overheat and could become damaged.

1. Disconnect from electrical outlet before cleaning the filter.
2. Filter should be cleaned at least twice a year or when it becomes visible solid.
3. Always operate the cleaner with the filter installed.
4. Do not use a washing machine to rinse the filter.
5. Do not use a hair dryer to dry it.



1. Push the Filter Cover Lock to open the filter cover.
2. Remove the filter from the grill-filter.
3. Rinse filter in lukewarm water and dry the filter completely.



4. Put the filter into the grill-filter.
5. A severely solid or clogged filter should be thoroughly washed with fresh tepid water. A mild detergent can be used if required.

TROUBLE SHOOTING GUIDE

PROBLEM	POSSIBLE REASON	POSSIBLE SOLUTION
HAND VACUUM WILL NOT OPERATE	<ol style="list-style-type: none"> 1. Power cord not firmly plugged into outlet. 2. No power in wall outlet. 3. Needs servicing. 4. Thermostat has tripped. 	<ol style="list-style-type: none"> 1. Plug unit in firmly. 2. Check fuse or breaker. Replace fuse/reset breaker. 3. Call 1-800-798-7398. 4. Turn the unit off and unplug from outlet.
HAND VACUUM WILL NOT PICK-UP OR SUCTION POWER IS WEAK	<ol style="list-style-type: none"> 1. Dust cup s full. 2. Unit clogged. 3. HEPA Dust Cup Filter needs cleaning or replacing. 	<ol style="list-style-type: none"> 1. Allow unit to cool down, then Restart. Empty dust cup – (see page 4). 2. Turn unit off and unplug from wall outlet. Remove HEPA Dust Cup Filter and check for object(s) in air duct and remove. 3. Clean or replace HEPA Dust Cup Filter. (see page 4)
DUST ESCAPING FROM HAND VACUUM	<ol style="list-style-type: none"> 1. Dust cup is full. 2. HEPA Dust Cup Filter is not installed correctly. 3. There is a puncture/hole in HEPA Dust Cup Filter. 	<ol style="list-style-type: none"> 1. Empty dust cup. 2. Review HEPA Dust Cup Filter instructions. (see page 4) 3. Replace HEPA dust cup filter. (see page 4)
HAND VACUUM HOSE OR BRUSHES WILL NOT PICK-UP	<ol style="list-style-type: none"> 1. Hose clogged. 2. Dust cup is full. 	<ol style="list-style-type: none"> 1. Remove hose and/or bushes. Remove obstruction from hose. 2. Empty and clean dust cup.

ORDERING REPLACEMENT DUST CUP FILTERS

TO ORDER REPLACEMENT FILTERS for Model EP134

Call: 1-866-98SHARK (1-866-987-4275)

Monday to Friday 8:30 A.M. - 5:00 P.M. Eastern Standard Time

FOR TECHNICAL SUPPORT for Model EP134

Call: 1-800-798-7398

Monday to Friday 8:30 A.M. - 5:00 P.M. Eastern Standard Time

or

visit our website: www.sharkhomecare.com

Please Note: The HEPA Dust Cup Filter may be washed. However, we recommend that this **NOT** be done more frequently than once every three (3) months.

To wash your HEPA Dust Cup Filter, hold filter cartridge by frame flange and rinse under a tap until all observable dirt has been removed. Some discoloration of the HEPA filter material may occur, this is normal and will not affect the filter's performance. When finished, shake off excess water. Do **NOT** wash in dishwasher. It is important that when you wash the HEPA dust cup filter, you allow it to dry **COMPLETELY** before using again. We recommend 24 hours to air dry. **DO NOT DRY IN DRYER.**

Important: This motor is equipped with a motor protective thermostat. If for some reason the vacuum cleaner should overheat, the thermostat will automatically turn the unit off. Should this occur, unplug the vacuum cleaner from the wall outlet and turn off switch. Allow the unit to cool. To restart, re-plug into wall outlet and turn switch back on.

Model EP134



ONE (1) YEAR LIMITED WARRANTY

EURO-PRO CORPORATION warrants this product to be free from defects in material and workmanship for a period of one (1) year from the date of the original purchase, when utilized for normal household use, subject to the following conditions, exclusions and exceptions.

If your appliance fails to operate properly while in use under normal household conditions within the warranty period, return the complete appliance and accessories, freight prepaid to **EURO-PRO** Corporation, 178 West Service Rd., Champlain, NY 12919. If the appliance is found by **EURO-PRO** to be defective in material or workmanship, **EURO-PRO** will repair or replace it free of charge. Proof of purchase date and \$ 9.95 to cover the cost of return shipping and handling must be included. *

Non-durable parts including, without limitation, dust bags, filters, brushes and electrical parts which normally require replacement are specifically excluded from warranty.

The liability of **EURO-PRO** Corporation is limited solely to the cost of the repair or replacement of the unit at our option. This warranty does not cover normal wear of parts and does not apply to any unit that has been tampered with or used for commercial purposes. This limited warranty does not cover damage caused by misuse, abuse, negligent handling or damage due to faulty packaging or mishandling in transit. This warranty does not cover damage or defects caused by or resulting from damages from shipping or repairs, service or alterations to the product or any of its parts, which have been performed by a repair person not authorized by **EURO-PRO**.

This warranty is extended to the original purchaser of the unit and excludes all other legal and/or conventional warranties. The responsibility of **EURO-PRO** Corporation if any, is limited to the specific obligations expressly assumed by it under the terms of the limited warranty. **In no event is EURO-PRO Corporation liable for incidental or consequential damages of any nature whatsoever.** Some states do not permit the exclusion or limitation of incidental or consequential damages, so the above may not apply to you.

This warranty gives you specific legal rights, and you may also have other rights which vary from state to state.

***Important: Carefully pack item to avoid damage in shipping. Be sure to include proof of purchase date and to attach tag to item before packing with your name, complete address and phone number with a note giving purchase information, model number and what you believe is the problem with item. We recommend you insure the package (as damage in shipping is not covered by your warranty). Mark the outside of your package "ATTENTION CUSTOMER SERVICE".**



OWNERSHIP REGISTRATION CARD

Please fill out and mail the product registration card within ten (10) days of purchase in order to validate the foregoing Limited Warranty. The registration will enable us to contact you in the unlikely event of a product safety notification. By returning this card you acknowledge to have read and understood the instructions for use, and warnings set forth in the accompanying instructions.

**RETURN TO EURO-PRO CORPORATION: 178 West Service Rd., Champlain, NY 12919
Model EP134**

Appliance model _____

Date purchased _____ Name of store _____

Owner's name _____

Address _____ City _____ State _____ Zip code _____

Printed in China

Free Manuals Download Website

<http://myh66.com>

<http://usermanuals.us>

<http://www.somanuals.com>

<http://www.4manuals.cc>

<http://www.manual-lib.com>

<http://www.404manual.com>

<http://www.luxmanual.com>

<http://aubethermostatmanual.com>

Golf course search by state

<http://golfingnear.com>

Email search by domain

<http://emailbydomain.com>

Auto manuals search

<http://auto.somanuals.com>

TV manuals search

<http://tv.somanuals.com>