

# **MEGA Shark™**

**WITH FLOOR KIT**

**OWNER'S MANUAL**  
**Model EP136R**  
**120V., 60Hz., 10 Amps**



**U.S :** *EURO-PRO Operating LLC*  
94 Main Mill Street, Door 16  
Plattsburgh, NY 12901

**Canada :** *EURO-PRO Operating LLC*  
4400 Bois Franc  
St. Laurent, QC, H4S 1A7

1 (800) 798-7398  
[www.sharkvac.com](http://www.sharkvac.com)

**EURO-PRO** 



### THREE (3) YEAR LIMITED WARRANTY

**EURO-PRO Operating LLC** warrants this product to be free from defects in material and workmanship for a period of three (3) year from the date of the original purchase, when utilized for normal household use, subject to the following conditions, exclusions and exceptions.

If your appliance fails to operate properly while in use under normal household conditions within the warranty period, return the complete appliance and accessories, freight prepaid to:

US: **EURO-PRO Operating LLC**, 94 Main Mill Street, Door 16, Plattsburgh NY12901

CANADA: **EURO-PRO Operating LLC**, 4400 Bois Franc, St. Laurent, QC, H4S 1A7

If the appliance is found by **EURO-PRO Operating LLC** to be defective in material or workmanship, **EURO-PRO Operating LLC** will repair or replace it free of charge. Proof of purchase date and \$9.95 to cover the cost of return shipping and handling must be included. \*

Non-durable parts including, without limitation, filters, brushes and electrical parts which normally require replacement are specifically excluded from warranty.

The liability of **EURO-PRO Operating LLC** is limited solely to the cost of the repair or replacement of the unit at our option. This warranty does not cover normal wear of parts and does not apply to any unit that has been tampered with or used for commercial purposes. This limited warranty does not cover damage caused by misuse, abuse, negligent handling or damage due to faulty packaging or mishandling in transit. This warranty does not cover damage or defects caused by or resulting from damages from shipping or repairs, service or alterations to the product or any of its parts, which have been performed by a repair person not authorized by **EURO-PRO Operating LLC**.

This warranty is extended to the original purchaser of the unit and excludes all other legal and/or conventional warranties. The responsibility of **EURO-PRO Operating LLC** if any, is limited to the specific obligations expressly assumed by it under the terms of the limited warranty. **In no event is EURO-PRO Operating LLC** liable for incidental or consequential damages of any nature whatsoever. Some states do not permit the exclusion or limitation of incidental or consequential damages, so the above may not apply to you.

This warranty gives you specific legal rights, and you may also have other rights which vary from state to state.

**\*Important: Carefully pack item to avoid damage in shipping. Be sure to include proof of purchase date and to attach tag to item before packing with your name, complete address and phone number with a note giving purchase information, model number and what you believe is the problem with item. We recommend you insure the package (as damage in shipping is not covered by your warranty). Mark the outside of your package "ATTENTION CUSTOMER SERVICE". We are constantly striving to improve our products, therefore the specifications contained herein are subject to change without notice.**



### FOR CANADIAN CONSUMERS ONLY OWNERSHIP REGISTRATION CARD

Please fill out and mail the product registration card within ten (10) days of purchase. The registration will enable us to contact you in the unlikely event of a product safety notification. By returning this card you acknowledge to have read and understood the instructions for use, and warnings set forth in the accompanying instructions.

Canada: **EURO-PRO Operating LLC**, 4400 Bois Franc, St-Laurent, Québec H4S 1A7

**EP136R**

Appliance model

Date purchased

Name of store

Owner's name

Address

City

Province

Postal Code

## ORDERING REPLACEMENT FILTERS

### TO ORDER REPLACEMENT FILTERS

for Model EP136R

Call: 1 (800) 798-7398

Monday to Friday 8:30 A.M. - 5:00 P.M.

Eastern Standard Time

or

visit our website: [www.sharkvac.com](http://www.sharkvac.com)

### FOR TECHNICAL SUPPORT

for Model EP136R

Call: 1(800) 798-7398

Monday to Friday 8:30 A.M. - 5:00 P.M.

Eastern Standard Time

#### Please Note

The Dust Cup Filter is washable. It should, however, be replaced every three months to ensure peak performance of your vacuum.

Both the Pre-Motor and Post Motor Filters are washable. They should however be replaced every three (3) months to ensure peak performance of your vacuum.

#### Important

Make sure that **ALL** filters are completely dry before re-installing back in the hand vacuum.

## IMPORTANT SAFETY INSTRUCTIONS

When using your **Hand Vacuum**, basic safety precautions should always be observed, including the following:

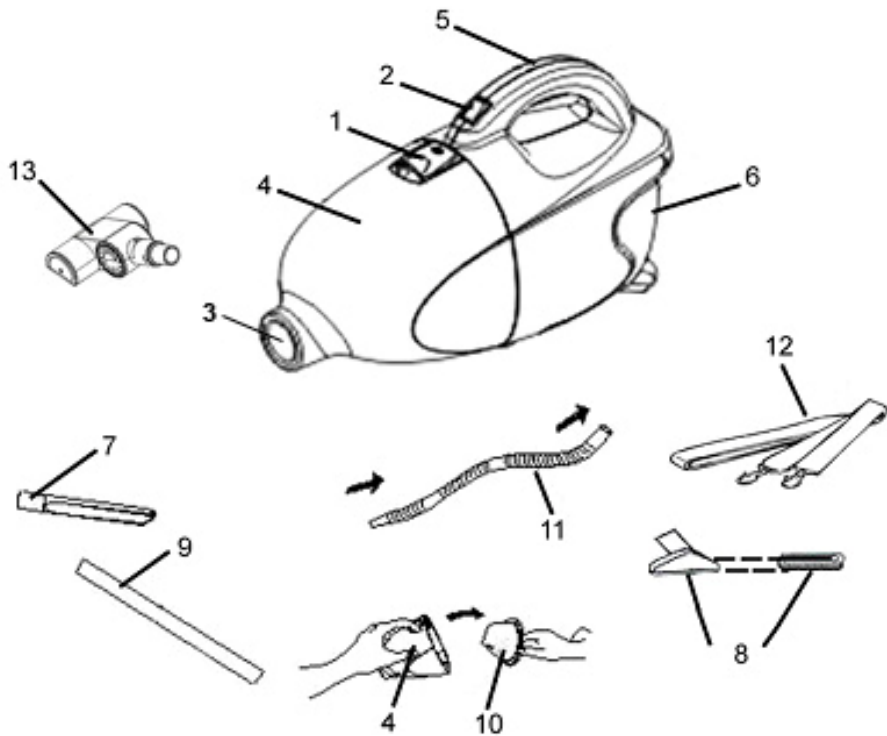
1. **Read all instructions before using your hand vacuum.**
  2. Use the system only for its intended use.
  3. To protect against a risk of electric shock, **do not** immerse any part of the system in water or other liquids.
  4. **Never** yank cord to disconnect from outlet; instead, grasp plug and pull to disconnect.
  5. **Do not** allow cord to touch hot surfaces.
  6. **Do not** run appliance over cord.
  7. **Do not** operate the system with a damaged cord or plug, or if the appliance or any other part of the system has been dropped or damaged. To avoid the risk of electric shock, **do not** disassemble or attempt to repair the hand vacuum. Return the system to **EURO-PRO** Operating LLC (see warranty) for examination and repair. Incorrect re-assembly or repair can cause a risk of electrical shock or injury to persons when the hand vacuum is used.
  8. Close supervision is necessary for any appliance being used by or near children. **Do not** leave the system unattended while connected.
  9. Keep hair, loose clothing, fingers and all parts of body away from opening and moving parts.
  10. **Do not** use to pick up flammable or combustible liquids such as gasoline or use in areas where they may be present.
  11. **Do not** pick up anything that is burning or smoking such as cigarettes, matches or hot ashes.
  12. Use extra care when cleaning on stairs.
  13. **Do not** use the hand vacuum without the dust cup filter in place.
  14. **This appliance is intended only for household use. Follow all user instructions in this manual.**
- To reduce the risk of fire, electric shock, or injury:**
- **Do not** leave the hand vacuum plugged in when unattended. Unplug the electrical cord when not in use and before servicing.
  - **Do not** allow to be used as a toy. Close attention is necessary when used by or near children, pets or plants.
  - Use only as described in this manual. Use only manufacturer's recommended accessories.
  - **Do not** pull cord, use cord as a handle, close a door on cord, or pull cord around sharp edges or corners. Keep cord away from heated surfaces.
  - Use **only** extension cords UL-rated or cUL at 15 amperes. extension cords rated for less amperage may overheat. Care should be taken to arrange the cord so that the cord cannot be pulled or tripped over.
  - Turn off all controls as applicable before unplugging from electrical outlet.
  - **Do not** unplug by pulling on cord. To unplug, grasp the plug, not the cord.
  - **Do not** handle plug or hand vacuum with wet hands or operate without shoes.
  - **Do not** put any objects into openings. **Do not** use with any opening blocked. Keep free of dust, lint, hair and anything else that may reduce air flow.
  - Store your appliance indoors in a cool, dry area.
  - Keep your work area well lit.
  - **Do not** immerse the hand vacuum into water or other liquids.
  - Keep end of hose, wands and other openings away from your face and body.
  - Use only on dry surfaces.
  - Using improper voltage may result in damage to the motor and possible injury to the user. Correct voltage is listed on rating label.

## SAVE THESE INSTRUCTIONS

### For Household Use Only

**WARNING:** To reduce the risk of electric shock, this appliance has a polarized plug (one blade is wider than the other). This plug will fit in a polarized outlet only one way. If the plug does not fit fully in the outlet, reverse the plug. If it still does not fit, contact a qualified electrician to install the proper outlet. **Do not modify the plug in any way.**

# GETTING TO KNOW YOUR HAND VAC



- 1. Push to Open Dust Cup (Container)
- 2. On/Off Power Switch
- 3. Suction Hole
- 4. Dust Cup
- 5. Handle
- 6. Rear Filter Cover
- 7. Crevice Tool
- 8. Deluxe Convertible Brush
- 9. Extension Tube ( x3 )
- 10. Dust Cup Filter ( x2 )
- 11. Flexible Hose
- 12. Shoulder Strap
- 13. Air Driven Turbo Brush

## Technical Specifications

Voltage: 120V., 60Hz.  
 Power: 10 Amps, 1200 Watts

\*Illustration may differ from actual product.

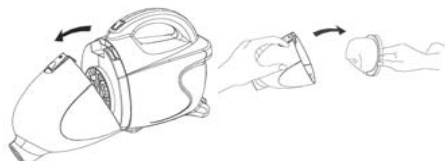
# TROUBLE SHOOTING GUIDE

PROBLEM	POSSIBLE REASON	POSSIBLE SOLUTION
HAND VACUUM WILL NOT OPERATE	<ol style="list-style-type: none"> <li>1. Power cord not firmly plugged into outlet.</li> <li>2. No power in wall outlet.</li> <li>3. Needs servicing.</li> <li>4. Thermostat has tripped.</li> </ol>	<ol style="list-style-type: none"> <li>1. Plug unit in firmly.</li> <li>2. Check fuse or breaker. Replace fuse/reset breaker.</li> <li>3. Call 1-800-798-7398.</li> <li>4. Turn the unit off and unplug from outlet. Allow unit to cool down, then Restart.</li> </ol>
HAND VACUUM WILL NOT PICK-UP OR SUCTION POWER IS WEAK	<ol style="list-style-type: none"> <li>1. Dust cup is full.</li> <li>2. Unit clogged.</li> <li>3. Dust Cup Filter needs cleaning or replacing.</li> <li>4. Flexible Hose / Extension Tube clogged</li> </ol>	<ol style="list-style-type: none"> <li>1. Empty dust cup – (see page 4)</li> <li>2. Turn unit off and unplug from wall outlet. Remove Dust Cup Filter and check for object(s) in air duct and remove.</li> <li>3. Clean or replace Dust Cup Filter. (see page 4)</li> <li>4. Turn unit off and unplug from wall outlet. Check for objects in flexible hose / extension tube.</li> </ol>
TURBO BRUSH DOES NOT ROTATE OR ROTATES SLOWLY	<ol style="list-style-type: none"> <li>1. Dust cup is full.</li> <li>2. Rotating brush or elbow obstructed.</li> <li>3. Belt broken.</li> <li>4. Hose obstructed.</li> <li>5. Dust cup filter clogged.</li> </ol>	<ol style="list-style-type: none"> <li>1. Empty dust cup.</li> <li>2. Clear obstructions. (see page4)</li> <li>3. Call 1-800-798-7398.</li> <li>4. Clear obstruction.</li> <li>5. Clean dust cup filter. (see page 4)</li> </ol>
DUST ESCAPING FROM HAND VACUUM	<ol style="list-style-type: none"> <li>1. Dust cup is full.</li> <li>2. Dust Cup Filter is not installed correctly.</li> <li>3. There is a puncture/hole in Dust Cup Filter.</li> </ol>	<ol style="list-style-type: none"> <li>1. Empty dust cup.</li> <li>2. Review Dust Cup Filter instructions. (see page 4)</li> <li>3. Replace Dust cup filter. (see page 4)</li> </ol>
HAND VACUUM, HOSE OR BRUSHES WILL NOT PICK-UP	<ol style="list-style-type: none"> <li>1. Flexible Hose or Extension Tube clogged.</li> <li>2. Dust cup is full.</li> </ol>	<ol style="list-style-type: none"> <li>1. Remove hose, extension tube and/or bushes. Remove obstruction.</li> <li>2. Empty and clean dust cup.</li> </ol>

## Emptying Dust Cup & Cleaning Dust Cup Filter

**Warning:** Always unplug from electrical outlet before opening the Dust Cup (container).

1. To open the Dust Cup (container), push button and pull out the Dust Cup (container).
2. Pull out the Dust Cup Filter.
3. Empty the dust from the Dust Cup Filter.

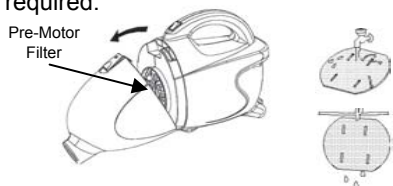


4. Rinse the Dust Cup Filter in cold water, and then wait until it dries completely (24 hours) before replacing it into the Dust Cup (container).
5. Place the Dust Cup Filter carefully into the Dust Cup (container).
6. Attach the Dust Cup (container) to the Hand Vacuum.

## Changing & Cleaning the Pre- Motor Filter

The pre-motor filter is a washable filter but should be replaced every three (3) months depending on usage.

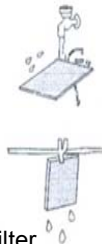
- Open the dust cup and remove the pre-motor filter.
- Rinse the pre-motor filter in lukewarm water and dry the filter completely. **Do not** use a washing machine to rinse the filter. **Do not** use a hair dryer to dry it. Air dry only for 24 hours. **Never** operate the vacuum without the pre-motor filter in place.
- When the filter is dry, replace into the unit and replace the filter cover over it.
- A severely solid or clogged filter should be thoroughly washed with fresh tepid water. A mild detergent can be used if required.



## Changing & Cleaning the Post Motor Filter

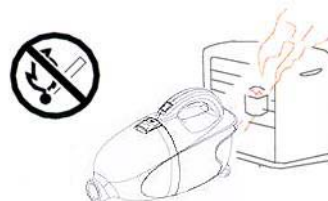
The post motor filter is a washable filter but should be replaced every three (3) months depending on usage.

- Remove the filter cover from the rear of the unit.
- Rinse the post motor filter in lukewarm water and dry the filter completely. **Do not** use a washing machine to rinse the filter. **Do not** use a hair dryer to dry it. Air dry only for 24 hours. **Never** operate the vacuum without the post motor filter in place.
- When the filter is dry, replace into the unit and replace the filter cover over it.
- A severely solid or clogged filter should be thoroughly washed with fresh tepid water. A mild detergent can be used if required.

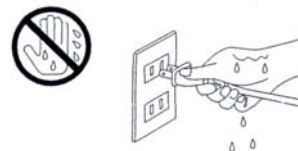


**Important:** If the suction opening in the unit or the hose become blocked, switch off the vacuum cleaner and remove the blocking substance before you start the unit again.

1. **Do not** operate the vacuum cleaner to close too heaters, or radiators.



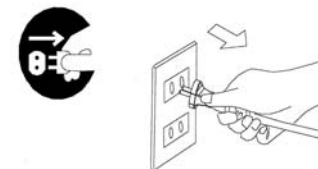
2. Before inserting the power plug into the wall outlet, make sure that your hands are dry.



3. **Do not** vacuum any liquids.

4. Keep hair, loose clothing, fingers, feet and all parts of body away from openings.

5. When pulling out the power plug from the wall outlet, pull the plug not the power cord.



6. **Do not** pick up anything that is burning or smoking such as cigarettes, matches or hot ashes.

7. **Do not** use without dust cup filter.

8. Before you start vacuuming, make sure to remove large or sharp objects that might damage the vacuum.

## OPERATING INSTRUCTIONS

**Warning:** Always unplug from electrical outlet before opening the dust cup (container).

**Note:** Dust cup filter must be used when operating the hand vacuum.

### Using The Unit As A Hand Vacuum

1. To open the dust cup (container), lift button and pull out the dust cup. Verify that the dust cup filter is inside, then attach the dust cup (container) to the hand vacuum.



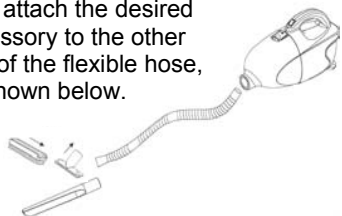
2. To use the hand vacuum with the shoulder strap, attach it to the unit as shown below.



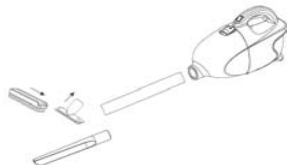
3. To attach the cleaning brush or crevice tool to the Hand Vacuum, push accessory into the suction hole, as shown below.



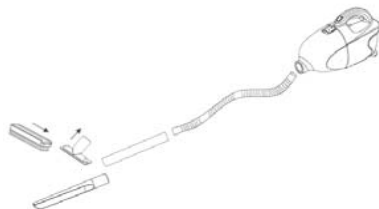
4. To use the hand vacuum with the flexible hose, push the end of the hose into the suction hole, then attach the desired accessory to the other end of the flexible hose, as shown below.



5. To use the hand vacuum with the extension tube, push the narrower end of the tube into the suction hole, then attach the desired accessory to the other end of the tube, as shown below.



6. To use the hand vacuum with both the flexible hose and the extension tube, first insert the flexible hose into the hand vacuum and then push the narrower end of the tube into the other end of the flexible hose. Then attach the desired accessory to the other end of the tube, as shown below.



### How To Operate Your Hand Vacuum

1. Hold the hand vacuum firmly in your hand by the Handle.
2. Push the On/Off Power Switch to "On" position.
3. Start vacuuming.

**CAUTION:** The hand vacuum is a Very powerful unit. Make sure that you hold it firmly, otherwise it can slip out of your hand and cause injury.

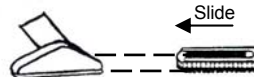
## OPERATING INSTRUCTIONS

### Using the Convertible Brush

**Note:** The convertible brush with removable bristles can be used with the hose, the extension tube or with the unit alone.

For vacuuming high, hard to reach places such as ceilings, curtains/drapes, etc., use the convertible brush with removable bristles as follows:

1. Insert the convertible brush to the hose alone or with the extension tube attached to the hose.
2. If you need a brush action, slide on the removable bristle brush onto the deluxe brush. (See illustration below)

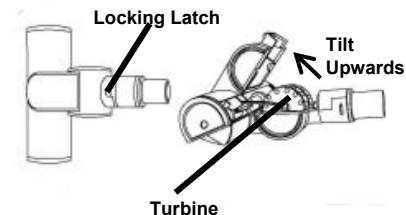


### Using the Unit With Air Driven Turbo Brush

1. Slide the narrow end of the extension tube into the air driven turbo brush.
2. Slide the wide end of the extension tube onto the round end of the deluxe hose with suction control.
3. Slide the round side of the deluxe hose with suction control into the suction hole of the vacuum unit.
4. Attach the shoulder strap to the vacuum and hang it from your shoulder.
5. You can now proceed to vacuum your carpet or hard floor.

**CAUTION:** The suction hole must be open, free of any obstructions at all times. Otherwise, the motor will overheat and could get damaged.

### Cleaning Air Driven Turbo Brush



1. Slide locking latch forward then tilt the top housing of the brush upwards. The top housing is hinged and will tilt up approximately 45° only.
2. Inspect turbine wheel and air passage for debris and/or blockage. Remove debris if present.
3. Inspect the rotating brush for built-up hair or string. If present, remove by carefully cutting with scissors. Avoid damaging or cutting bristles.
4. Once clean, close the top cover of the turbo brush and slide the locking latch toward the rear of the brush to lock.

**IMPORTANT:** This unit is equipped with a motor protective thermostat. If for some reason the vacuum cleaner should overheat, the thermostat will automatically turn the unit off. Should this occur:

- Push the On/Off button once.
- Disconnect the plug from the power source.
- Check the source of overheating problem. (i.e. clogged hose or filter)
- If clogged hose or filter is found, unclog the hose and replace the filters.
- Wait at least 45 minutes before attempting to reuse the vacuum.
- After unit has cooled down for 45 minutes, plug in the cleaner and push the On/Off button. The vacuum should start again.
- If the vacuum still does not start, please contact Customer Service at 1 (800) 798-7398.

## Free Manuals Download Website

<http://myh66.com>

<http://usermanuals.us>

<http://www.somanuals.com>

<http://www.4manuals.cc>

<http://www.manual-lib.com>

<http://www.404manual.com>

<http://www.luxmanual.com>

<http://aubethermostatmanual.com>

Golf course search by state

<http://golfingnear.com>

Email search by domain

<http://emailbydomain.com>

Auto manuals search

<http://auto.somanuals.com>

TV manuals search

<http://tv.somanuals.com>