



Installation and Operation Guide

Parallel 202 &/or Surge Tank Retrofit Kit

EV9336-52

DESCRIPTION

The Parallel 202 Pre-Filter is designed to remove larger dirt particles (10 microns-nominal) from the incoming water to a high flow, high volume fountain machine, a coffee maker and/or an ice machine in order to extend the life of the fine filters. The surge (accumulator) tank is a pre-pressurized, diaphragm-type tank designed to provide filtered water to a high flow, high volume fountain machine during peak periods when increased gallons per minute (GPM) and pounds per square inch (PSI) requirements are demanded.

BENEFITS/FEATURES

Pre-Filter

- Ideal for water supplies with excessive dirt loads.
- Reduces dirt and other particulate matter in supply water through pre-filter.
- Water meter determines water demand and usage for all beverage using equipment.

Surge Tank

- Assures a 12 gallon reserve for the extra capacity surge tank and 5 gallon reserve for the standard capacity surge tank of filtered water during peak demands.

SPECIFICATIONS

Refer to the following table for the most important Pre-Filter and Surge Tank characteristics and part numbers:

CHARACTERISTIC	PREFILTER	SURGE TANK (standard)	SURGE TANK (extra capacity)
Dimensions (overall)	26 ¹ / ₁₆ " H x 28 ³ / ₄ " W x 8 ¹ / ₂ " D (2 ¹ / ₂ " additional height required for cartridge change out)	15 ³ / ₈ " Dia. x 22" H	15 ³ / ₈ " Dia. x 31 ¹ / ₈ " H
Inlet Connection	3/4" NPT female	3/4" NPT male	3/4" NPT male
Max. Flow Rate	10 gpm	10 gpm	10 gpm
Min. Pressure	10 psi	10 psi	10 psi
Max. Pressure	90 psi (non-shock)	100 psi (non-shock)	100 psi (non-shock)
Max. Temperature (cold water use only)	100°F (38°C)	100°F (38°C)	100°F (38°C)
Shipping Weight	32 ¹ / ₂ pounds	28 pounds	35 pounds
Operating Weight	41 ¹ / ₂ pounds	68 pounds	133 pounds
Part Number	EV9100-24	EV9336-50	EV9336-51

The indention system employed in the description column permits the determination of the next higher assembly to which the part pertains and also the detail parts which comprise any assembly. Assemblies are listed first with component parts of each assembly listed with the indention of one additional space.

Index No.	Part No.	Description	Quantity per Assy.
	EV9100-24	Pre-filter, parallel 202	1
*1	EV3098-41	Sump	2
*2	EV9108-40	Cartridge, ec-204 (package of 6)	2
*3	EV3097-09	Kit, o-ring (package of 3 #ev3093-50 o-rings)	
*4	EV3093-53	Wrench, sump	1
*5	EV3034-83	Ball valve	1
*6	EV3100-93	Water meter	1
**7	EV3047-10	Tubing, plastic (bulk length)	As required
**8	EV3099-62	Clamp, tubing	As required
**9	EV3057-83	Connector, 3/4" npt x 3/4" Barb	2
*10	EV3092-54	Pressure relief (part of 3101-08 cap)	2
*	EV9336-51	Surge tank, extra capacity	1
*	EV9336-50	Surge tank, standard	1
*11	EV3034-83	Ball valve	1
*12	EV3047-10	Tubing, plastic (bulk length)	120"
*13	EV3099-62	Clamp, tubing	2

Note: ** items not included with parallel 202 pre-filter system due to variability of installations.

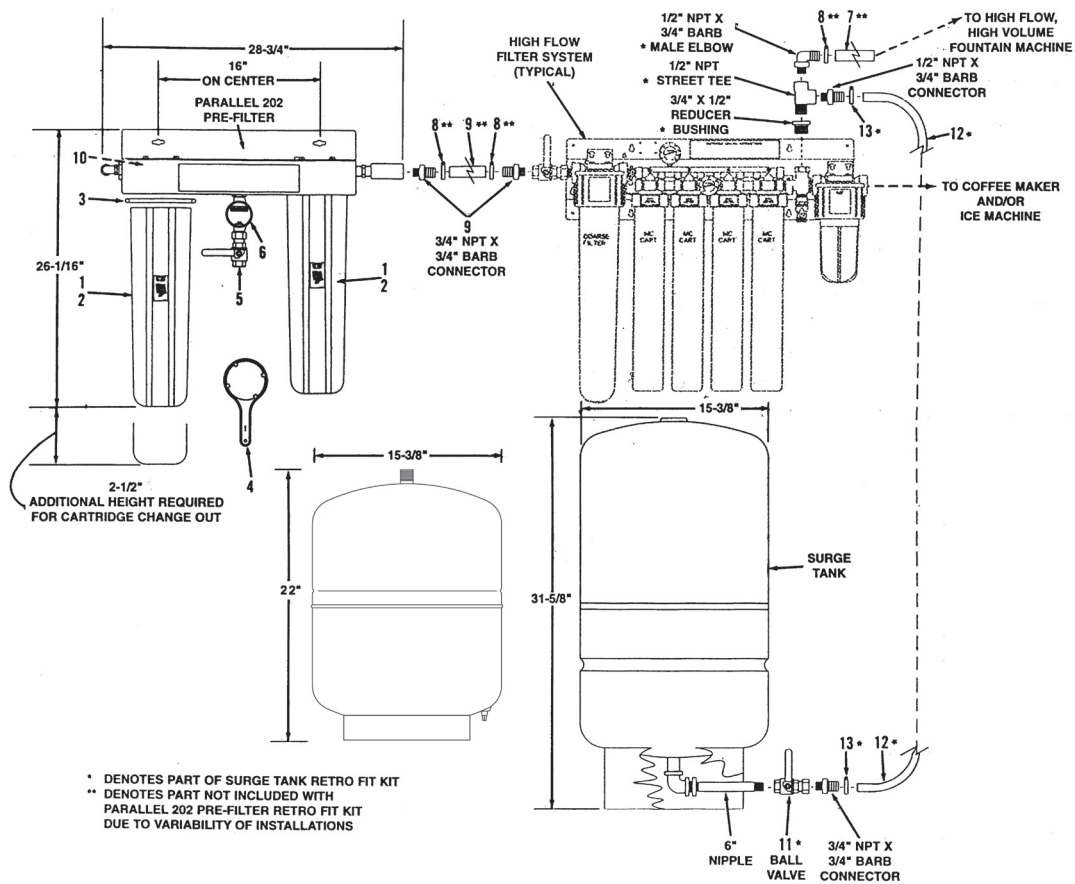


Figure 1. Parallel 202 Pre-Filter and/or Extra Capacity Surge Tank or Standard Surge Tank Retro Fit Kit

PARALLEL-202 PRE-FILTER (EV9100-24)

INSTALLATION

- Shut off water and electrical power to all affected food service equipment.
It is important that the installation of the pre-filter be clean and sanitary. All water-contact parts shall be immersed in chlorinated water (a capful of bleach per bucket of water) at the start of the installation procedure.
- Disconnect electrical power and water from the high flow filter system to be served by the Parallel-202 Pre-Filter. Close the inlet water ball valve on the high flow filter system. Disconnect the inlet water line from the high flow filter system ball valve.
- Select a suitable location near the high flow filter system (not to exceed maximum of 10 ft.) for mounting the pre-filter and install mounting hardware 16" apart (pre-filter mounting plate may be used as a template). The pre-filters overall dimensions are 26 $\frac{1}{16}$ " high x 28 $\frac{3}{4}$ " wide x 8 $\frac{1}{2}$ " deep. Allow at least 2 $\frac{1}{2}$ " below the pre-filter to change out the cartridges. Be sure the mounting hardware is capable of supporting 42 pounds (pre-filter weight when in service).
- Unscrew both sumps from the pre-filter using the sump wrench, if necessary. Do not lose the O-ring seals. Remove the cartridges and set aside with the sumps and O-rings (if removed).
NOTE: Be sure to use a high quality pipe joint compound or Teflon[®] tape on all threaded connections.
- Install a 3/4" NPT x 3/4" barb connector into the the outlet tee of the pre-filter and the inlet water ball valve on the high flow filter system.
- Measure distance between the barbs on the connectors and cut tubing (not supplied) to this length plus an additional 2". Slide two tubing clamps (not supplied) onto the tubing and install the tubing ends fully onto the connector barbs (not supplied). Fully tighten the tubing clamps to secure the tubing onto each connector barb.
- Check that the sump O-ring is lubricated. If additional lubricant is required use only a high grade silicone lubricant. Install the O-ring in its respective groove in the sump, remove protective wrap, position the cartridge on the guide seat in the bottom of the sump, then firmly screw the sump into the cap and tighten with the provided sump wrench. **DO NOT USE A PIPE WRENCH.** Repeat this procedure for the second cartridge and sump.
- Connect the inlet water line disconnected from the inlet water ball valve on the high flow filter system the inlet water ball valve on the pre-filter.
- Turn on water to the pre-filter, place the pre-filter ball valve in the ON position (handle parallel to water flow), and press the red pressure relief button on one cap to open the pressure relief valve, purging air from the high flow filter system. When water vents out, release the button and repeat for the pressure relief on the second cap.

10. Inspect the high flow filter system for any water leakage, tightening all connections as required until no leakage is observed. Turn on water and electrical power to all affected food service equipment. The filter system is now in service. Always keep a supply of replacement cartridges on hand.

SERVICE

No routine (daily, weekly, monthly, etc.) servicing of the pre-filter is required under normal operating conditions. The only scheduled servicing of the pre-filter is to change-out the cartridges whenever the water meter denotes a quantity of supply water (predetermined by the system requirements) has passed through the system.

CARTRIDGE CHANGE

Replace filter cartridges when they become excessively dirty, when the pressure gauge on the high flow filter system indicates extremely low pressure during water flow, or when changes in taste and odor are detected.

1. Turn off inlet and outlet water valves and press the red pressure relief valve on the filter cap.
2. Unscrew the sump from the filter cap using the sump wrench if necessary. Remove the used cartridge and empty the water from the sump. **The O-ring provides a water tight seal. Be sure the O-ring is properly seated and lubricated.**
3. If the O-ring on the sump feels dry, lubricate it with a high grade silicone lubricant and reinstall in its groove in the sump.
4. Clean the sump with a mild solution of unscented dishwashing detergent. DO NOT use soap, strong or scented detergents, chemical cleansers or abrasives.
5. Position the replacement cartridge on the guide seat in the bottom of the sump. Then firmly screw the sump into the cap with the sump wrench. **DO NOT USE A PIPE WRENCH.**

SURGE TANK

STANDARD: EV9336-50 **EXTRA CAPACITY:** EV9336-51

INSTALLATION:

The surge tank must be installed on the effluent side of the high flow filter system. The surge tank has a 20±2 psi air charge WHEN EMPTY for proper performance. This must be checked before installation and re-charged if necessary. Refer to SERVICE.

It is important that the installation of the surge tank be clean and sanitary. All water-contact parts shall be immersed in chlorinated water (a capful of bleach per bucket of water) at the start of the installation procedure.

1. Shut off water and electrical power to all affected food service equipment.
2. Disconnect electrical power and water from the high flow filter system to be served by the Surge Tank. Close the inlet water ball valve on the high flow filter system and bleed water pressure from the system using the flushing valve on the high flow filter system. **The extra capacity (12 gallon) surge tank weighs 133 pounds and the standard (5 gallon) tank weighs 68 pounds when full. If the installation location is not on the floor, be certain its stand/shelf/platform is capable of safely supporting this weight.**
3. Select a suitable location near the high flow filter system (not to exceed maximum of 10 feet) for the surge tank. The surge tanks overall dimensions are 15 $\frac{3}{8}$ " diameter x 31 $\frac{1}{2}$ " high for the extra capacity surge tank and 15 $\frac{3}{8}$ " diameter X 22" in height for the standard surge tank.
4. Disconnect the water line between the high flow filter system and the high flow, high volume fountain machine at the plated cross containing the activation valve. **NOTE: Be sure to use a high quality pipe joint compound or Teflon[®] tape on all threaded connections.**
5. Install a 3/4" NPT x 1/2" NPT bushing into the the universal cross on the high flow filter system.
6. Install a 1/2" NPT tee into the bushing and orient as shown in figure 1.
7. Install a 1/2" NPT x 3/4" barb connector into the branch of the plated cross and a 1/2" NPT x 3/4" barb elbow into the run of the plated cross. Orient the elbow as shown in figure 1.
8. Reconnect a water line between the high flow filter system and the high flow, high volume fountain machine using appropriate connectors for the installation. One means is to slide a tube clamp onto the tubing (not provided) disconnected from the high flow filter system at the activation valve plated cross and install the tubing fully onto the newly installed 1/2" NPT x 3/4" barb elbow. Fully tighten the tubing clamp to secure the tubing onto the elbow barb.
9. Remove the protective cap from the nipple extending from the bottom of the extra capacity surge tank. For the standard capacity surge tank, remove styrofoam block, clean threads of styrofoam chips and remove plug from threaded, nipple fitting. **For standard surge tank, make sure plastic plug located in nipple threaded fitting is removed to insure proper installation of surge tank.**
10. Install a ball valve onto the nipple and orient in any position convenient for operation of the handle. Install a 3/4" NPT x 3/4" barb connector into the ball valve.
11. With the surge tank at any convenient position near the high flow filter system, cut the tubing to length (maximum length 10ft.) and slide two tubing clamps onto the tubing. Install the tubing end fully onto the 3/4" NPT x 3/4" barb connector at the surge tank ball valve. Fully tighten one tubing clamp to secure the tubing onto the connector barb. **Disinfection of the surge tank is required prior to placing it into service.**

12. Pour a capful of bleach into the tubing connected in step 11 onto the 3/4" NPT x 3/4" barb connector at the surge tank ball valve and then immediately connect the loose tubing end to the 1/2" NPT x 3/4" barb connector installed in step 7. Fully tighten the remaining tubing clamp to secure the tubing onto the connector barb.
13. Place the high flow filter system into service by opening the inlet water ball valve. Open the surge tank ball valve and allow the surge tank to fill for three minutes.
14. Connect a hose to the high flow filter system activation valve connected to the plated cross. Close inlet valve to the highflow system. Open the flush valve and allow the water to drain to waste for five minutes in order to expel chlorinated water from the surge tank or until no chlorine odor is detected. Then close the flush valve and open the inlet valve to the high flow system. If new cartridges installed, flush high flow system for five minutes. The high flow filter system and surge tank is now in service.
15. Inspect the system for any water leakage, tightening all connections as required until no leakage is observed.
16. After installation of the surge tank, it will be necessary to close the surge tank ball valve prior to removing cartridges from the pre-filter or high flow filter system.
Before removing any filter cartridges always close the ball valve on the surge tank.

SERVICE

No routine servicing of the surge tank is required under normal operating conditions although periodic sanitizing (annual) is recommended. The only servicing of the surge tank occurs if the internal air bladder pressure (excluding water pressure) is not 20±2 psi when empty. A conventional tire valve is provided at the top of the extra capacity surge tank and near the bottom of the standard surge tank to monitor and adjust the internal pressure.

LIMITED WARRANTY

COMMERCIAL WATER TREATMENT EQUIPMENT

You have just purchased one of the finest water treatment units made. As an expression of our confidence in Everpure products, this product is warranted against defects in material and workmanship to the original end-user when installed in accordance with Everpure specifications. The warranty period commences from the date of purchase and is administered as follows:

For a period of ONE YEAR

Replaceable elements (i.e., filter & water treatment cartridges)*

For a period of FIVE YEARS

The entire system (excluding replaceable elements)

***This is for material & workmanship, not filter or water treatment cartridge life.**

The unit must be used in operating conditions that conform to Everpure's recommended design guidelines. This warranty will not apply if the unit has been modified, repaired or altered by someone not authorized by Everpure.

If a part described above is found defective within the specified period, you should notify Everpure technical service at the phone number listed below. Any part found defective within the terms of this warranty will be repaired or replaced (at Everpure's discretion) by your local dealer or Everpure technical service. You pay only freight from our factory and local dealer charges. Any repaired or replaced warranty item will be incorporated under the original warranty terms of the existing system.

We are not responsible for damage caused by accident, fire, flood, freezing, Act of God, misuse, misapplication, neglect, oxidizing agents (such as chlorine, ozone, chloramines and other related components), alteration, installation or operation contrary to our printed instructions, or by the use of accessories or components which do not meet Everpure's specifications. Refer to the specifications section in the Installation and Operating manual for approved application parameters.

Our product performance specifications are furnished with each water treatment unit. TO THE EXTENT PERMITTED BY LAW, EVERPURE DISCLAIMS ALL IMPLIED WARRANTIES, INCLUDING WITHOUT LIMITATION WARRANTIES OF MERCHANTABILITY AND FITNESS FOR PARTICULAR PURPOSE; TO THE EXTENT REQUIRED BY LAW, ANY SUCH IMPLIED WARRANTIES ARE LIMITED IN DURATION TO THE PERIOD SPECIFIED ABOVE FOR THE ENTIRE WATER TREATMENT UNIT. As a manufacturer, we do not know the characteristics of your water supply or the purpose for which you are purchasing this product. The quality of water supplies may vary seasonally or over a period of time, and your water usage rate may vary as well. Water characteristics can also differ considerably if this product is moved to a new location. For these reasons, we assume no liability for the determination of the proper equipment necessary to meet your requirements, and we do not authorize others to assume such obligations for us. Further, we assume no liability and extend no warranties, express or implied, for the use of this product with a non-potable water source or a water source which does not meet the conditions for use described in the owner's guide or performance data sheet for this product. OUR OBLIGATIONS UNDER THIS WARRANTY ARE LIMITED TO THE REPAIR OR REPLACEMENT (AT EVERPURE'S DISCRETION) OF THE FAILED PARTS OF THE WATER TREATMENT UNIT, AND WE ASSUME NO LIABILITY WHATSOEVER FOR DIRECT, INDIRECT, INCIDENTAL, CONSEQUENTIAL, SPECIAL, GENERAL OR OTHER DAMAGES.

Some states do not allow the exclusion of implied warranties or limitations on how long an implied warranty lasts, so the above limitation may not apply to you. Similarly, some states do not allow the exclusion of incidental or consequential damages, so the above limitation or exclusion may not apply to you. This warranty gives you specific legal rights, and you may also have other rights which vary from state to state. Consult your telephone directory for your local independently operated Everpure dealer, or write Everpure for warranty and service information.



For sales, replacement components, and service, contact your Everpure dealer or:

Everpure, LLC: 1040 Muirfield Drive • Hanover Park, Illinois 60133 • 800.323.7873

In Europe: Toekomstlaan 30 • B-2200 Herentals, Belgium

In Japan: Hashimoto MN Bldg. 7F • 3-25-1 Hashimoto Sagamihara-Shi • Kanagawa 229-1103, Japan

Technical Service

800.942.1153

www.everpure.com

Free Manuals Download Website

<http://myh66.com>

<http://usermanuals.us>

<http://www.somanuals.com>

<http://www.4manuals.cc>

<http://www.manual-lib.com>

<http://www.404manual.com>

<http://www.luxmanual.com>

<http://aubethermostatmanual.com>

Golf course search by state

<http://golfingnear.com>

Email search by domain

<http://emailbydomain.com>

Auto manuals search

<http://auto.somanuals.com>

TV manuals search

<http://tv.somanuals.com>