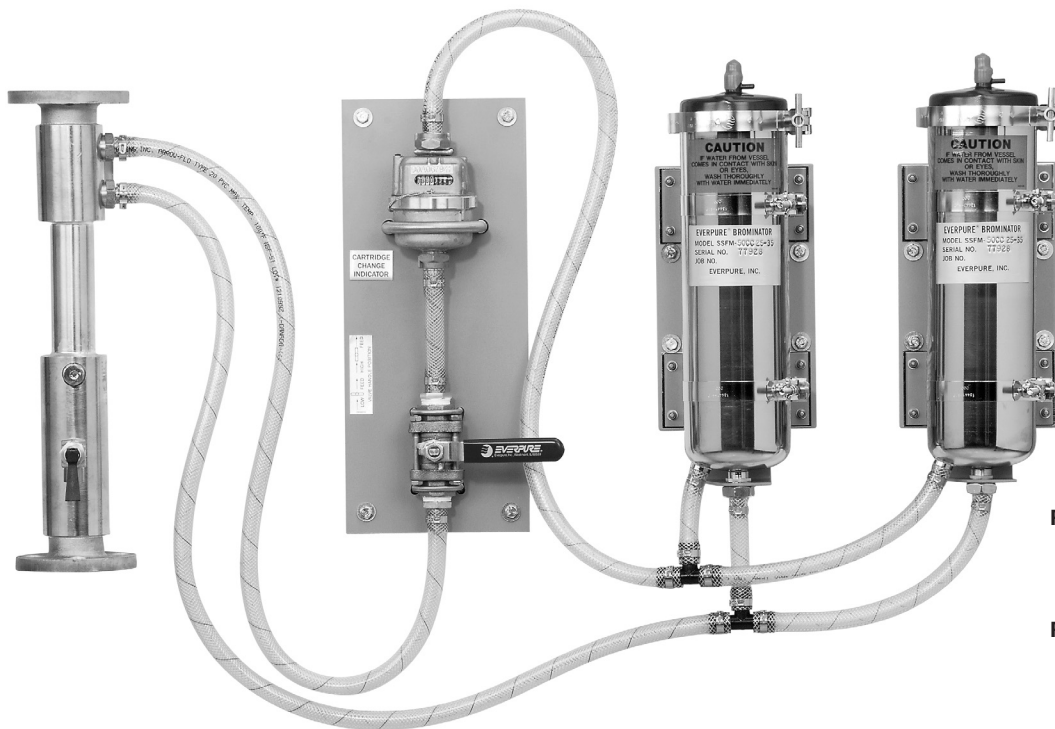


SSFM-50CC

Proportioning Brominators

EVERPURE[®]
WATER YOU CAN TRUST[®]

*Superior Water Disinfection for
Marine Applications*



SSFM-50CC
P/N 169106
Replaces P/N EV906421

SSFM-50CC
P/N 169107
Replaces P/N EV906422

BENEFITS

- Simple to operate – No chemicals to mix
- Safe to handle – Not a fire or explosion hazard
- Effective Disinfectant – More effective across a broader pH range than chlorine
- Bromine is 4-10 times less noticeable in water than chlorine giving you better-tasting water
- Global service and parts availability
- Depended on by USN, USCG and offshore oil and gas rigs for safe, reliable water
- Recognized by the U.S. Navy as the safest, most reliable, and easy-to-use method of water disinfection aboard ship
- Requires no additional chemicals – Bromine cartridges are ready to use and require just 30 seconds to change
- Automatically delivers bromine to water in a constant ratio
- Automatic feeding system has simple hydraulic controls
- Lightweight for easy moving and installation
- Available as a non-magnetic unit for special applications

BROMINATION FOR SAFE, POTABLE WATER

Everpure proportioning bromine feeders add a predetermined quantity of elemental bromine into the freshwater discharge of the on-board watermaker prior to the potable water storage tank to ensure the potable water is bacteriologically safe for human consumption.

Everpure is the original manufacturer of bromine feeders and the manufacturer of the patented Everpure Brominating Cartridge (NSN 4610-01-022-9970). Equipment manufactured by Everpure is installed aboard nearly every US Navy surface warfare vessel, USCG Ships, USACE, NOAA, and numerous offshore oil, gas and production platforms. The Everpure Brominating Cartridge is recognized as the safest, most reliable, most effective and easy-to-use water disinfectant for marine applications; no more chemicals to mix, no fragile pumps and valves that clog, no flammable and/or explosive reactions with organics (fuel oils, paint, etc).

SPECIFICATIONS

Dimensions

37"W x 27"H x 15"D

Weight

SSFm-50CC: 54 lbs. (24.5 kg)

Dry Weight

SSFm-50CC: 44 lbs. (20.0 kg)

MOUNTING

System components should be vertically mounted on a bulkhead or stanchion within reasonable proximity to each other and the bypass header assembly. A minimum of 13 inches of overhead clearance is required above the feeder assembly for easy removal of the disposable bromine cartridge. For convenience, the instruction plate with operating procedure should be bulkhead mounted adjacent to the proportioning bromine feeder.

PLUMBING TERMINATIONS

The proportioning bromine feeder is flanged per MIL-F-20042, 1 1/4" for all SSFM-50CC series models. A three valve bypass loop should be plumbed into bypass the proportioning bromine feeder during maintenance or bromine cartridge change. This bypass loop can be provided by the installer.

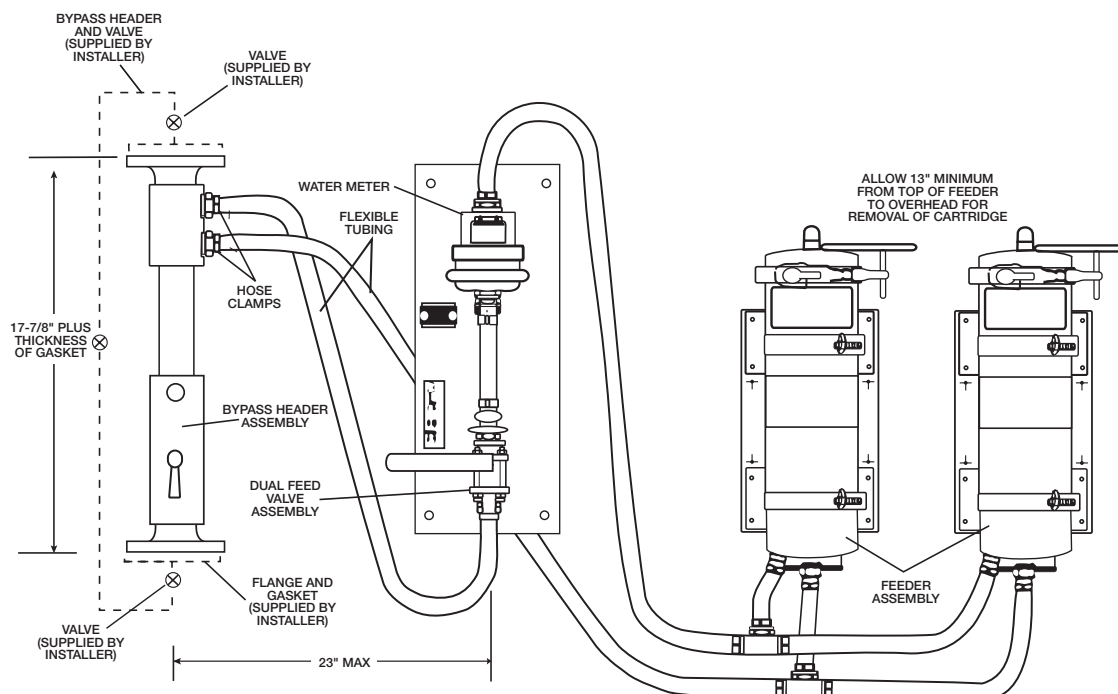
SIZING AND ORDERING A PROPORTIONING BROMINATOR

For each distiller / watermaker served, determine the capacity in gallons per day. Using this figure, calculate the discharge in gallons per minute. For example: 26,000 gpd /24, /60 = 18.0 gpm. Choose a part number corresponding to these flow rates:

SSFm-50CC SERIES BROMINATOR FLOW RATE (gpm)	SSFm-50CC SERIES BROMINATOR PART NO.	REPLACES PART NO.
16 - 24	169106	EV906421
25 - 35	169107	EV906422

NOTES

A potable water storage tank should be treated whenever it is filled from a shore source, or whenever there is no measurable bromine residual in the tank. A measurable bromine residual will insure the water is safe to drink. See our recirculating brominator data sheets for this application.



EVERPURE
WATER YOU CAN TRUST®

Pentair Filtration, Inc.
502 Indiana Avenue - P.O. Box 1047
Sheboygan, Wisconsin 53082-1047
Phone 866.873.7506 Fax 888.203.7361
International Phone 920.457.9435 International Fax 920.457.2417
www.everpure.com

Free Manuals Download Website

<http://myh66.com>

<http://usermanuals.us>

<http://www.somanuals.com>

<http://www.4manuals.cc>

<http://www.manual-lib.com>

<http://www.404manual.com>

<http://www.luxmanual.com>

<http://aubethermostatmanual.com>

Golf course search by state

<http://golfingnear.com>

Email search by domain

<http://emailbydomain.com>

Auto manuals search

<http://auto.somanuals.com>

TV manuals search

<http://tv.somanuals.com>