

GAME DESCRIPTIONS



POOL PRO

Realize your professional pool playing dreams in this virtual pool match.

Controller: Left and Right to Adjust Cue Ball Angle

A Button: Press Once to Determine Shot Strength, then Again to Shoot

B Button: Overview of the Ball Numbers



YUMMY

Build a stairway from the falling candy blocks to help Aimee escape from danger!

Controller: 8 Directions

A Button: Rotate the Candy Blocks Clockwise, Explode Bomb

B Button: Rotate the Candy Blocks Counter-Clockwise, Explode Bomb



LUCKY QUE

Solve puzzles by rotating and placing shapes on top of designs or use your imagination to create your own designs.

Controller: 8 Directions

A Button and Turbo Button: Grab, Rotate and Place Graphics

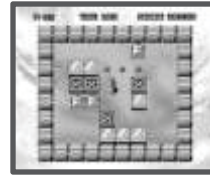


MAGIC JELLY

Avoid enemies and pick up bonus items as you bounce around the diamond board and race against time. Change the color of all of the squares by dropping bombs. Advance to the next level once all the squares change color.

Controller: 4 Directions

A Button and Turbo Button: Drops Bomb



BUSY BONG

In this puzzle solving game, find a way to push the crates over the red markers before time runs out. Move to the next level after all markers are covered.

Controller: 4 Directions

A Button: Undo Last Step

B Button: Try Again

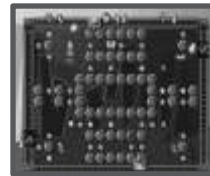


BUBBLE BLASTER

As different color balls move toward you, shoot a colored ball at the others to try to arrange 3 or more of the same colored balls next to each other. The 3 balls will be removed from the track. Don't let the balls reach you, or the game will be over.

Controller: 8 Directions

A Button & Turbo Button: Shooter



SEEK THE RESOURCES

Go behind enemy lines and steal their resources. Beware of deadly traps and enemy fire. When all resources are collected, you move to the next level.

Controller: 4 Directions

A Button & Turbo Button: Shooter



PLUMBER

Run and jump through the city and sewers to find the key and advance to the next level. Collect bonus items during your journey, but watch out for dangerous creatures and traps.

Controller: Left and Right

A Button: Jump

B Button: Throw the Wrench

WARNINGS AND PRECAUTIONS

A very small portion of the population have a condition which may cause them to experience epileptic seizures or have momentary loss of consciousness when viewing certain kinds of flashing lights or patterns that are commonly present in our daily environment. These persons may experience seizures while watching some kinds of television pictures or playing certain video games. Players who have not had any previous seizures may nonetheless have an undetected epileptic condition.

If you or anyone in your family has experienced symptoms linked to an epileptic condition (e.g. a seizure or loss of awareness), immediately consult your physician before using any video games.

We recommend that parents observe their children while they play the games. If you or your child experiences any of the following symptoms: dizziness, altered vision, eye or muscle twitching, involuntary movements, loss of awareness, disorientation, or convulsions, discontinue use immediately and consult your physician.

FOLLOW THE PRECAUTIONS BELOW WHENEVER USING YOUR TURBOGRIP:

- When using your TurboGrip do not sit or stand too close to the television screen. Play as far back from the screen as possible.
- Do not play if you are tired or need sleep.
- Always play in a well-lit room.
- Be sure to take a 10 to 15 minute break at least every hour while playing.

REPETITIVE STRAIN WARNING

Some people may experience fatigue or discomfort after playing for long periods of time. Always take a 10 to 15 minute break every hour of play. If hands or arms become tired or you experience discomfort, stop immediately and rest. If you experience repeated soreness or discomfort during or after play, consult a doctor. Failure to do so may result in long-term injury. Consult a doctor before playing if your hands, wrists, or arms have been previously injured or strained in other activities, as this system may aggravate the condition.

HARDWARE PRECAUTIONS/ MAINTENANCE

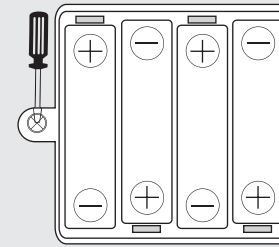
1. Do not disassemble or try to repair your TurboGrip or any of its components. Doing so voids your warranty.
2. Always switch off the TurboGrip before connecting to your TV.
3. Do not store your TurboGrip in a humid place, on the floor or in any location where it may collect dirt, dust, lint, etc.
4. Do not drop, hit or otherwise abuse your TurboGrip or its components.
5. Make sure all connections to the TurboGrip are made carefully and inserted into the correct input jacks.
6. Always hold plug straight when inserting into or removing from input jack.
7. When disconnecting any plugs from the TurboGrip, first turn the unit off, then carefully pull out the plug from the tip rather than from the cable as this may cause damage to the cable. Do not step on, sharply pull or bend wires and cables.
8. Do not expose the TurboGrip or any of its components to extreme heat or cold. Your TurboGrip may not work when the temperature is too high. Take care not to expose your TurboGrip to direct sunlight for extended periods of time.
9. Do not spill liquid on your TurboGrip or its components. To clean your TurboGrip, use a soft slightly damp cloth. Always allow all the components to dry completely before using again.
10. Do not rapidly turn the power switch on and off, as this may shorten the life of the batteries.
11. For the best game image, look directly at the display on your TV screen and only operate in good light.

Battery Caution

Batteries required: 4 x AA 1.5 volt

Please retain the packaging for future reference since it contains important information. Do NOT mix old and new batteries. Do NOT mix alkaline, standard batteries and re-chargeable batteries. Non-rechargeable batteries are not to be recharged; rechargeable batteries are only to be charged under adult supervision if removable. Rechargeable batteries are to be removed from the toy before being charged. Exhausted Batteries are to be removed from the toy. The supply terminals are NOT to be short circuited. Only batteries of the same or equivalent type as recommended are to be used. TO REPLACE BATTERIES: To change the batteries, move the safety screws from the battery compartment cover and make sure the positive (+) and the negative (-) poles are in the correct position. To ensure proper safety and operation, battery replacement must always be done by an adult. Never let a child use this product unless battery door is secure. Batteries are small objects and could be ingested. Keep all batteries away from small children.

When the unit is disabled by electro-static discharge, please press RESET key to reset the unit.



Batteries required:
4 x AA 1.5 volt

Batteries are not included

EXCALIBUR
ELECTRONICS, INC.

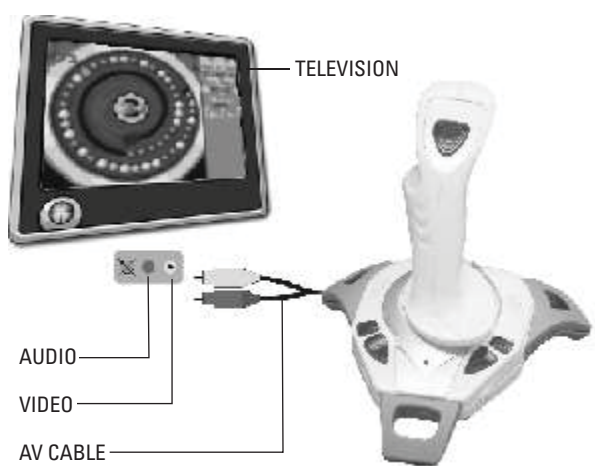
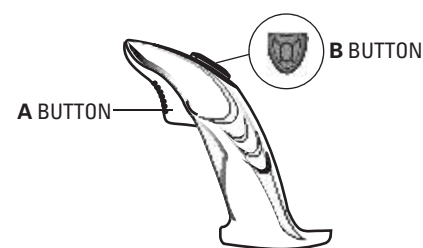
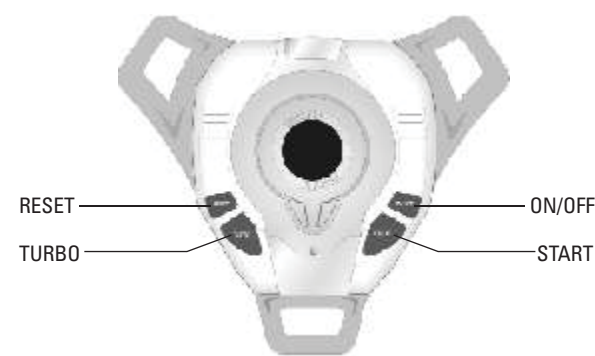
Excalibur Electronics, Inc.
13755 SW 119th Avenue • Miami, FL 33186
Tel: 305.477.8080 • Fax: 305.477.9516 • www.ExcaliburElectronics.com

TURBOGRIP is a trademark of Excalibur Electronics, Inc.
Actual product may differ slightly from photograph.



TURBOGRIP™ FUNCTIONS

Congratulations on your purchase of the Excalibur Electronics' TurboGrip 16-Bit Gaming System. Please take a few moments to read through this Instruction Manual to familiarize yourself with the many functions and features. This set includes a handset console with built-in software for 18 challenging games.



Turning your TurboGrip ON

1. Make sure the TurboGrip is turned OFF before connecting it to the television.
2. Turn your television on and switch it to AV-input (see your TV instruction manual for specific instructions).
3. Press the ON/OFF button to activate.
4. Select a game and press start to play.

Turning your TurboGrip OFF

1. After you have finished game play press ON/OFF.
2. Disconnect your TurboGrip from the television.

TROUBLESHOOTING

PROBLEM	SOLUTION
No picture on the screen	1) Have Batteries been installed correctly? 2) Is the TurboGrip turned on? 3) Is the TV turned on? 4) Is the TV set to AV input? 5) Is the TurboGrip connected properly? 6) Check whether the battery capacity is too low.
Screen flickers or no color	1) Are the TV color controls set properly? 2) Are the TV channel fine adjustments set properly?
No game sound	1) Is the TV volume too low or off? 2) Have any of the cables become loose or disconnected?
Picture on TV screen is unsteady	Adjust the vertical and horizontal hold controls on your television until the picture becomes steady.
Lines appear on TV during a broadcast	Is the video cable connected properly? Is the battery capacity too low?
Picture is blinking or distorted	Power off the TurboGrip and try again.
No power	Have batteries been installed correctly?

GAME DESCRIPTIONS



DEEP STORM

Control dangerous and exciting ocean air battles from your battleship command center.

Controller: 8 Directions

A Button: Fire Guns



TOTALLY JET

Race Your boat against time to reach the finish line. Scoop up score and fuel markers along the way. Avoid the buoys on the course or loose speed; avoid obstacles in your path or loose a life.

Controller: Left and Right

A Button: Controls Speed



TIGER RESCUE

An enemy army has invaded your country with powerful weapons and have overwhelmed your defenses. The only chance of defeating the evil army is by fearlessly piloting an experimental fighter jet. You have four secret fighter jets to choose from and save the day!

Controller: 8 Directions

A Button: Single Fire

Turbo Button: Continuous Fire

B Button: Activate Secret Weapon



JEWEL FEVER 2

Help Mr. Stubbs, the fun loving pirate, collect jewels for his treasure chest. As the jewels drop down scoop them up. Shoot at different color gems to collect them as treasure.

Controller: Left and Right

A Button & Turbo Button: Collect Gems

B Button: Shoot Gems

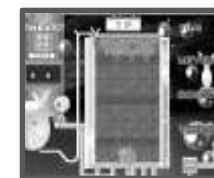


FINAL ESCAPE

Move the crocodile to push the bricks. When two bricks collide they explode and provide food. Dodge attacks and eliminate the enemy to advance to the next level.

Controller: 4 Directions

A Button & B Button: Push or Destroy Bricks



DREAM BUBBLE

As diamonds fall from above, shift and rotate them to form a complete line of jewels. Full lines will disappear!

Controller: 3 Directions

A Button: Change Orientation

B Button: Bomb

Down Direction: Accelerate



PINBALL FISH

Bounce the pinball into schools of fish to capture as many fish as you can for the aquarium. Scoop up bonus items as they appear but don't let them distract you and drop the pinball.

Controller: Left and Right

A Button & Turbo Button: Launch Pinball



FIND THE WAY

As a brave dog, you must lead a lost baby to his home. Cross through the forest and grasslands and overcome many obstacles to bring him home safely.

Controller: 4 Directions

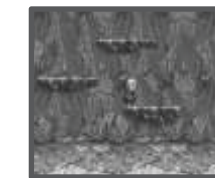
A Button & Turbo Button: Jump



THE LOST WORLD

Save your life by dodging enemy attacks and finding your escape route.

Controller: 4 Directions



PANK ROCK

Use your rigging gun to climb the mountain. Watch out for falling rocks as you collect valuable objects.

Controller: Left and Right to adjust rig shooting direction

Controller: Up to shoot rig. Press up again to determine chord length

Controller + B Button: While on ledge, press B Button to move right or left

A Button: Sway on rig and climb rope

B Button: Stop the chord from swinging and jump onto ledge

Free Manuals Download Website

<http://myh66.com>

<http://usermanuals.us>

<http://www.somanuals.com>

<http://www.4manuals.cc>

<http://www.manual-lib.com>

<http://www.404manual.com>

<http://www.luxmanual.com>

<http://aubethermostatmanual.com>

Golf course search by state

<http://golfingnear.com>

Email search by domain

<http://emailbydomain.com>

Auto manuals search

<http://auto.somanuals.com>

TV manuals search

<http://tv.somanuals.com>