

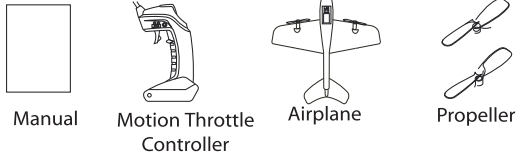
# Sky Wings Model No.: 8628

## Motion-Sensitive Airplane

### Instruction Manual

Please read through this instruction manual carefully before operating. Please be sure to remove all accessories and components from packaging.

#### Included in your package:



**WARNING:**  
CHOKING HAZARD - Small parts.  
Not for children under 3 years.

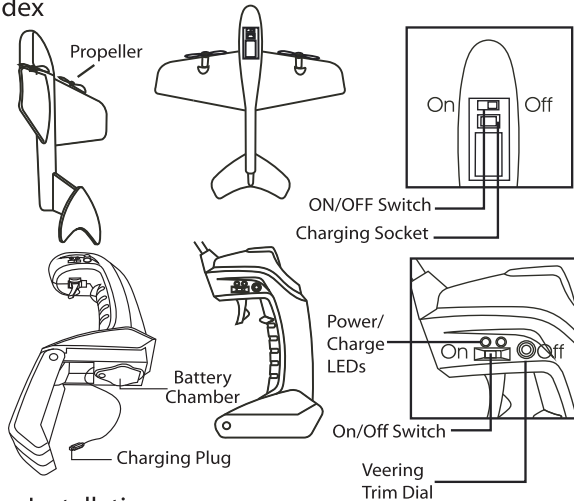
**WARNING:**  
Do not touch the propeller when operating.  
Do not use in a crowd.  
Supervision of adult or expert required  
when the device is in use.

#### Battery Requirements

Airplane : Li-poly battery (included)  
Transmitter : 6 x 1.5V (AA) (006P , 6F22) size batteries.  
Use alkaline batteries for best performance.

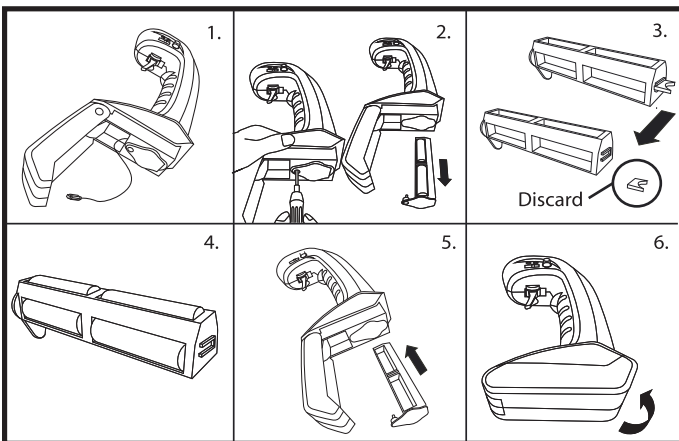
- Product features:**
- 1) Steering remote control.
  - 2) Accurate speed control.
  - 3) Lightweight body and long-lasting flight times.
  - 4) Special body material with outstanding shock-proof functionality.
  - 5) Smooth veering left and right.

#### Part Index



#### Battery Installation

- 1) Open the battery chamber cover as shown in (1).
- 2) Turn the Philips screwdriver (not included) counterclockwise to release the battery chamber as shown in (2).
- 3) Remove the battery chamber. Remove the part at the end as shown in (3). This part should be removed for optimal flight control. **Discard the piece immediately.**
- 4) Place 6 'AA' batteries into the battery chamber according to correct polarity as shown in (4).
- 5) Re-install the battery chamber into the remote control. Tighten the chamber with a Philips screwdriver by screwing clockwise as shown in (5).
- 6) Close the battery chamber cover as shown in (6).

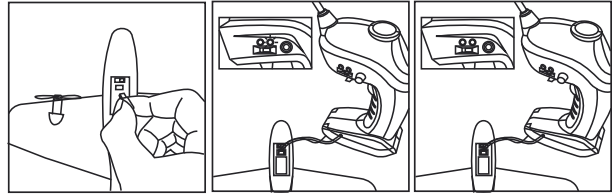


#### Recharging the Plane

- 1) Switch the power of the plane OFF and push the power switch of the remote control to OFF.
- 2) Connect the plug of the remote control charger to the charging socket on the plane. The green LED light on the remote control charger indicates that power is charging.
- 3) The green LED light turns off automatically when the charging process is completed.
- 4) Disconnect the plane from the plug, wind the cable of the charger and place it back into the box. Close the battery chamber cover.

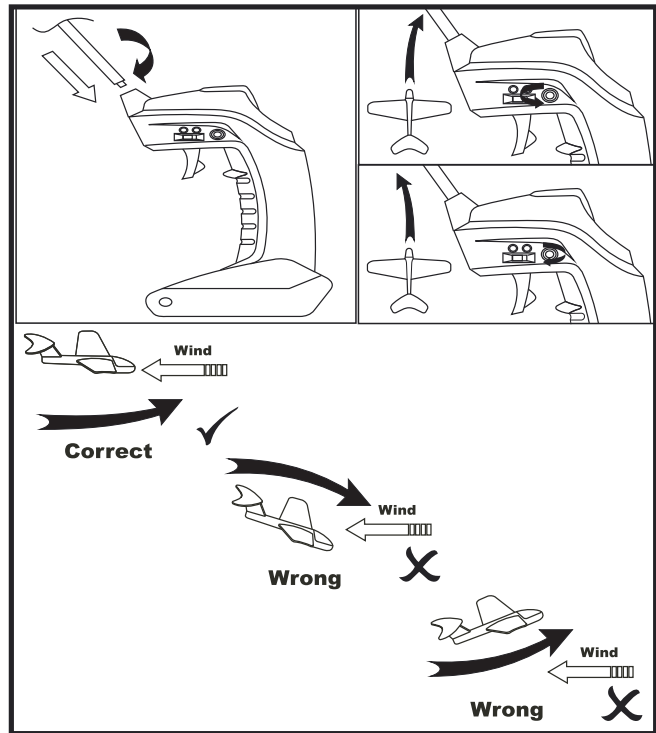
#### Charging Notes

- 1) The charging process takes approximately 20 – 30 minutes.
- 2) The green light of the remote control charger turns off when the battery is full. A full charge will allow the plane to fly for approximately 10 minutes. The remote control charger features a smart security function which automatically terminates the charging process when it reaches 4.25V. Charging duration may vary with the amount of power remaining in the battery.



#### How to Play

- 1) Install the antenna to the remote control and screw until secure. Push the power switch of the plane to ON. Push the power switch of the remote to ON. The red light will turn on.
- 2) To ensure horizontal flying, hold the remote vertically. Pull the control trigger back to 1/3 throttle until the plane starts flying. Toss the plane horizontally, along your line of sight. If the plane flies to the right, adjust the trim tuning dial to the left. If the plane veers to the left, adjust the trim to the right. The left and right alignment can be adjusted by the steering trims on the controller to ensure straight flight. Release the trigger to stop the plane.
- 3) Repeat the steps above to keep the airplane flying straight.
- 4) When tossing the plane, make sure that it is facing any breeze and is launched horizontally.
- 5) Do not toss the airplane vertically as it may cause it to fall immediately and be damaged.
- 6) When angle of elevation is too wide, lower the speed by releasing the pressure on the trigger. If the plane starts to nosedive, increase speed by squeezing the trigger.










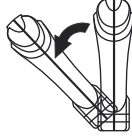
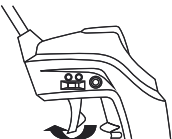

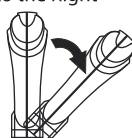

#### Where and When to Fly

- 1) Choose a calm day when operating outdoors. If tree leaves are blowing, it is too windy to operate outdoors.
- 2) Warning: Power consumption will increase when operating in strong wind. It may also affect proper control of the airplane, and the plane could get blown off course and damaged.
- 3) Do not operate the plane in or around crowds, ponds, residential building areas or forests.
- 4) For optimal performance, fly in temperatures between 45 and 100 degrees Fahrenheit.
- 5) Do not operate in rainy or snowy days or near high voltage cables. The user may be exposed to electric shock.

#### Safe Usage and Maintenance:

- The plastic tab from the battery compartment should be kept out of reach of children. It should be discarded as soon as it is removed.
- Remove batteries from the remote control when the device will not be in use for a long time.
- Do not place the plane or its remote near a heat source.
- Do not place the plane or its remote in water as this may cause short circuit.
- Do not expose the plane or its remote to extreme temperatures
- Always keep the plane clean, use a damp cloth to clean, followed by a dry cloth to wipe water away. Never use chemical to clean the product.
- Long operation times may generate high heat levels causing wear and tear.
- To extend the product life, allow a 10 minute cool-down period before installing new batteries.
- Keep this instruction manual for future reference.

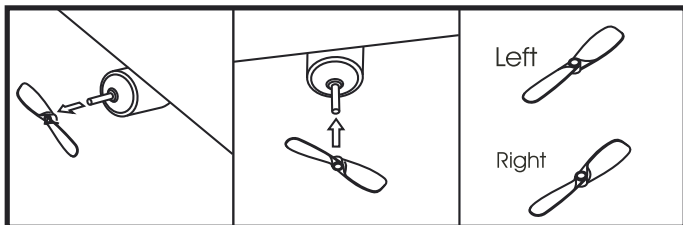
## Setup and Operation of the Remote Control

Desired Direction	Remote Control Position	Throttle Trigger
Take Off / Fly Upward 		Pull Trigger Steadily 
Decrease Speed / Land 		Relax Trigger Steadily 
Turn Left 	Tilt the Remote Control 45° to the Left 	Lightly Adjust Trigger during Turns 
Turn Right 	Tilt the Remote Control 45° to the Right 	Lightly Adjust Trigger during Turns 

## Replacing the Propeller

Follow steps below when replacing a damaged propeller.

- Pull out the top of the propeller and remove the damaged part.
- Place propeller according to the markings on the center of the propeller - "L1" (left) and "R2" (right). The etching (L1 and R2) should be facing away from the motor.
- Insert new propeller onto the steel axle.



## Caution

- This toy is not suitable for children under 8 years old.
- Supervision from parents or adults is required when installing or replacing batteries.
- Static may cause product failure. If this happens, remove and replace the batteries.
- Regularly check electrical sockets and surrounding accessories. If any damage is found in the remote control charger, stop using the device until it is completely fixed.
- The plane and transmitter are not shock resistant.
- Do not operate in poor weather such as rain, snow, heavy cloud cover or the thunderstorms.
- Do not place the plane or transmitter near sources of heat or in direct sunlight for long periods of time.
- Do not operate the plane when small children are present.
- Use only the charger provided with the product when recharging.
- Do not attempt to use the remote control charger with any other batteries.
- Do not touch the motor after play, as it may become hot after long operation time.
- The plastic tab from the battery compartment should be kept out of reach of children, and should be discarded as soon as it is removed.

## Battery Warnings

This product comes with 1 Li-Poly battery. For safe usage, please note the following:

- Do not mix old and new batteries together. Do not mix battery types or brands.
- Non-rechargeable batteries should not be recharged.
- Rechargeable batteries should be removed from the toy while being charged.
- Rechargeable batteries should only be charged under adult supervision.
- Only batteries of the same or compatible type as recommended should be used.
- Batteries should be inserted with the correct polarity.
- Exhausted batteries should be removed from the toy.
- The supply terminals should not be short-circuited.
- Do not touch the power socket.
- Do not weld batteries directly or pierce batteries with pin or other sharp objects.
- Do not carry batteries with metallic objects such as necklaces/hair clips.
- Battery should be charged every 6 months when not in regular use.

### Warning

Changes or modifications to this unit not expressly approved by the party responsible for compliance could void the user's authority to operate the equipment

## Troubleshooting

Problem	Possible Cause	Solution
Propeller not spinning or spinning slowly.	1) ON/OFF switch is positioned at OFF. 2) Batteries not yet fully charged.	1) Switch the power to ON. 2) Recharge batteries.
Continuous turning or sudden descent after take off.	The trim dial on the remote control is in the wrong position.	Adjust the trim dial on the remote control
Failure to take off or slow decent when flying.	1) The airplane is not facing the wind during takeoff. 2) Ensure the batteries have enough power.	1) Face the wind when tossing the airplane at takeoff. 2) Recharge the plane.
Falling before the ascending stage after take off	Battery low.	Recharge batteries.
No response or slow response when operating with remote control	Affected by radiation from the surrounding high voltage cable/adaptor/buildings.	Move the airplane away from the interference or operate the product in other places.
Loss of control or poor flight control.	1) Another remote with the same frequency or signal is operating another product or this product. 2) Location of the airplane is beyond the operation coverage of the remote control. 3) Plastic piece was not removed from battery compartment.	1) Operate this product in an interference-free environment. 2) Make sure the antenna extended. Ensure the airplane is operating within remote control coverage. The remote control coverage is up to 150 feet. 3) Remove plastic piece as shown in Figure 3 on lower left of page 1. Discard immediately.

NOTE: This equipment has been tested and found to comply with the limits for a Class B digital device, pursuant to Part 15 of FCC Rules and R&TTE Directive 1999/5/EC. These limits are designed to provide reasonable protection against harmful interference in a residential installation. This equipment generates, uses and can radiate radio frequency energy and, if not installed and used in accordance with the instructions, may cause harmful interference to the radio communications. However, there is no guarantee that interference will not occur in a particular installation. If this equipment does cause harmful interference to radio or television reception, which can be determined by turning the equipment off and on, the user is encouraged to try to correct the interference by one or more of the following measures:

- Reorient or relocate the receiving antenna.
- Increase the separation between the equipment and receiver.
- Connect the equipment into an outlet on a circuit different from that to which the receiver is needed.
- Consult the dealer or an experienced radio/TV technician for help.

## 90-DAY LIMITED WARRANTY

EXCALIBUR ELECTRONICS, INC., warrants to the original consumer that its products are free from any electrical or mechanical defects for a period of 90 DAYS from the date of purchase. If any such defect is discovered within the warranty period, EXCALIBUR ELECTRONICS, INC., will repair or replace the unit free of charge upon receipt of the unit, shipped postage prepaid and insured to the factory address below.

The warranty covers normal consumer use and does not cover damage that occurs in shipment or failure that results from alterations, accident, misuse, abuse, neglect, wear and tear, inadequate maintenance, commercial use, or unreasonable use of the unit. This warranty does not cover cost of repairs made or attempted outside of the factory.

Any applicable implied warranties, including warranties of merchantability and fitness, are hereby limited to 90 DAYS from the date of purchase. Consequential or incidental damages resulting from a breach of any applicable express or implied warranties are hereby excluded. Some states do not allow limitations on the duration of LIMITED 90-DAY WARRANTY implied warranties and do not allow exclusion of incidental or consequential damages, so the above limitations and exclusions in these instances may not apply. The only authorized service center in the United States is:

Excalibur Electronics, Inc.  
13755 SW 119th Ave  
Miami, Florida 33186 U.S.A.  
Phone: 305.477.8080  
Fax: 305.477.9516

[www.ExcaliburElectronics.com](http://www.ExcaliburElectronics.com)

Ship the unit carefully packed, preferably in the original carton, and send it prepaid, and adequately insured. Include a letter, detailing the complaint and including your daytime telephone number, inside the shipping carton. If your warranty has expired and you want an estimated fee for service, write to the above address, specifying the model and the problem.

NOTE: Please do not send your unit without first receiving an estimate for servicing from EXCALIBUR ELECTRONICS, INC. Contact us before sending your unit. We cannot store your unit!

*Excalibur Electronics, Inc. reserves the right to make technical changes without notice in the interest of progress.*



Sky Wings Airplane  
English

MADE IN CHINA

## Free Manuals Download Website

<http://myh66.com>

<http://usermanuals.us>

<http://www.somanuals.com>

<http://www.4manuals.cc>

<http://www.manual-lib.com>

<http://www.404manual.com>

<http://www.luxmanual.com>

<http://aubethermostatmanual.com>

Golf course search by state

<http://golfingnear.com>

Email search by domain

<http://emailbydomain.com>

Auto manuals search

<http://auto.somanuals.com>

TV manuals search

<http://tv.somanuals.com>