

MOI 1200E



8" Random Orbit Sander



SERVICE

Tool service and maintenance must be performed only by qualified repair personnel.

When servicing a tool, only use identical replacement parts available from FEIN.

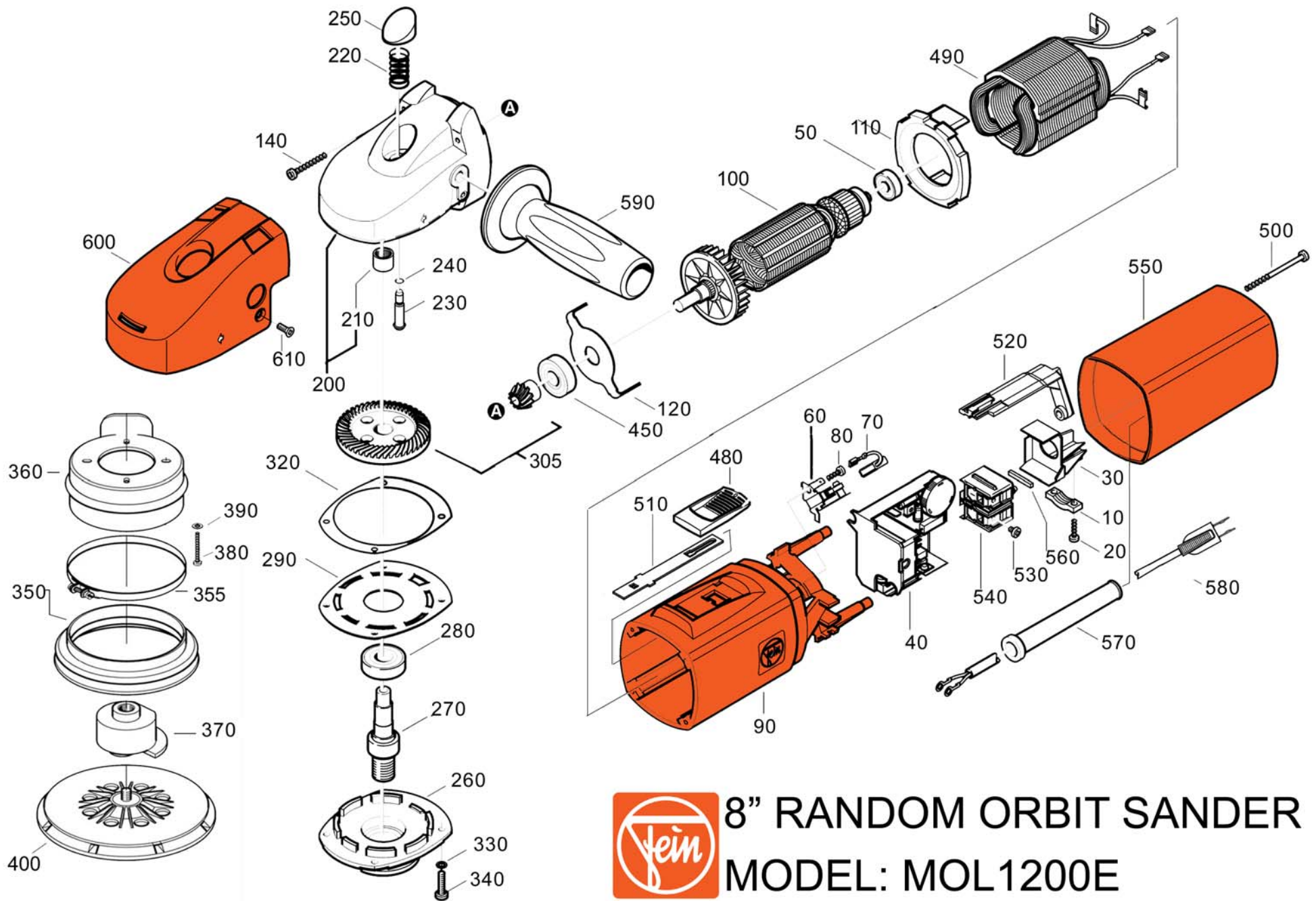
Repairs on FEIN Power Tools required the use of special tools (pulling devices and bearing press). Authorized repair centers have trained repair technicians and equipment necessary to perform these repairs. Service or repairs performed by unqualified persons could result in operator injury.

For the location of the repair center near you, please call 1-800-441-9878. Monday thru Friday, 9AM to 5PM EST. Or, look on our web site at www.feinus.com and follow the link to "Authorized Warranty Repair Centers"

**FEIN Power Tools
1030 Alcon Street
Pittsburgh, PA 15220**

Phone: 412-922-8886 Fax: 412-922-8767 Toll Free: 1-800-441-9878

November 24, 2003



8" RANDOM ORBIT SANDER
MODEL: MOL1200E

Fein Power Tools

MOL 1200E Parts List

<u>Item</u>	<u>Item Number</u>	<u>Description</u>	<u>Reqd</u>
10	3-24-31-021-00-7	Cable Clamping Piece	1
20	4-30-70-001-00-6	Screw	2
30	3-24-31-040-00-6	Strain Relief	1
40	3-07-62-233-99-9	Speed Control (120V)	1
50	4-17-01-001-17-2	Ball Bearing	1
60	3-07-12-088-01-3	Brush Holder	2
70	3-07-11-132-00-3	Carbon Brush	2
80	4-30-70-018-00-9	Screw	2
90	3-19-01-114-01-4	Motor Housing	1
100	5-3-273-001-11-7	Armature (110V)	1
110	3-14-28-118-00-7	Air Conducting Ring	1
120	3-24-16-098-00-5	Cover Plate	1
140	4-30-70-007-00-2	Screw	4
200,210	3-12-06-110-01-5	Gear Housing	1
210	4-17-05-019-00-1	Needle Bearing	1
220	3-09-01-032-00-3	Pressure Ring	1
230	3-02-17-327-00-3	Retention Pin	1
240	4-06-12-137-00-8	Sealing Ring	1
250	3-28-05-164-00-0	Retention Button	1
260	3-24-19-115-00-6	Bearing Plate	1
270	3-34-06-284-00-9	Drive Shaft	1
280	4-17-01-010-05-4	Ball Bearing	1
290	3-24-16-101-00-9	Cover Plate	1
305	3-38-09-229-01-2	Bevel Gear (11/44T)	1
320	3-26-24-117-00-9	Washer	1
330	4-24-43-003-04-3	Securing Ring	4
340	4-30-41-023-04-6	Screw	4
350	3-18-10-202-99-9	Rubber Suction Hood & Band	1
355	3-18-10-205-77-7	Hose Clamp	1
360	3-18-10-205-99-9	Suction Housing	1
370	3-12-07-105-99-9	Eccentric Shaft	1
370a	4-17-01-218-88-8	Bearing	1
370b	4-17-01-218-99-9	Bearing	1
380	4-30-02-030-99-9	Screw	4
390	4-24-01-012-04-9	Disc	1
400	6-38-06-092-99-9	Sanding Pad (8in)	1
450	4-17-01-007-03-8	Ball Bearing	1
480	3-28-05-156-00-8	Sliding Switch	1
490	5-1-273-001-11-5	Field (110V)	1
500	4-30-70-017-00-1	Screw	2
510	3-28-16-055-00-0	Switch Bar	1
520	3-28-16-052-00-4	Switch Rod	1
530	4-30-03-013-99-1	Screw	2
540	3-07-01-218-00-3	ON/OFF Switch	1
550	3-12-01-101-00-8	Cover	1
560	3-14-15-082-00-4	Bolster	1
570	3-14-13-007-00-7	Protective Sleeve	1
580	3-07-05-051-99-9	Cable	1
600	3-14-28-125-00-1	Hood	1
610	4-30-64-020-04-9	Screw	2
590	3-21-19-107-01-6	Side Handle	
	6-29-13-005-00-4	Pin for Removing Pad	
	6-29-10-022-00-2	Two Slot Nut Driver	

Free Manuals Download Website

<http://myh66.com>

<http://usermanuals.us>

<http://www.somanuals.com>

<http://www.4manuals.cc>

<http://www.manual-lib.com>

<http://www.404manual.com>

<http://www.luxmanual.com>

<http://aubethermostatmanual.com>

Golf course search by state

<http://golfingnear.com>

Email search by domain

<http://emailbydomain.com>

Auto manuals search

<http://auto.somanuals.com>

TV manuals search

<http://tv.somanuals.com>