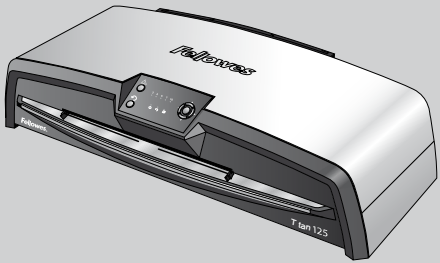




High-Performance Office Laminator

Titan™ 125



- E** Please read these instructions before use.
- F** Lire ces instructions avant utilisation.
- S** Lea estas instrucciones antes del usarlo.

INDEX

LAMINATOR CONTROLS / QUICK START GUIDE	3
ENGLISH	4-9
FRANCAIS	10-15
ESPAÑOL	16-21

EASY-ACCESS LOCKING SCREW

ATTENTION:

TOP COVER LOCKING SCREW MUST BE REMOVED BEFORE THIS MACHINE CAN BE OPENED.

Note: You will be unable to operate the easy access feature (to open the machine) for cleaning/maintenance if the top lid locking screw (A) is not removed first.

ATTENTION:

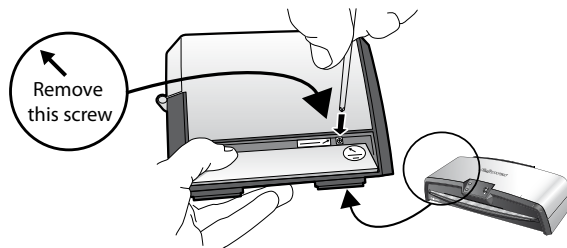
LA VIS DE VERROUILLAGE DU COUVERCLE DOIT ÊTRE RETIRÉE AVANT DE POUVOIR OUVRIR CET APPAREIL.

Remarque: Vous ne pourrez pas activer la fonction d'accès facile permettant d'ouvrir l'appareil pour le nettoyage/entretien, si la vis de verrouillage du couvercle (A) n'est pas d'abord retirée.

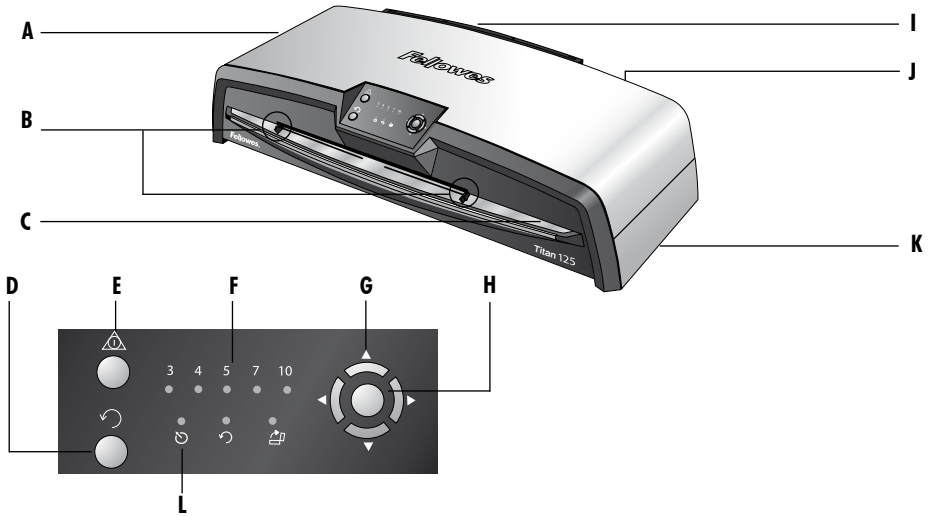
ATENCIÓN:

ANTES DE ABRIR ESTA MAQUINA, DEBE RETIRAR EL TORNILLO DE RETENCION DE LA CUBIERTA SUPERIOR.

Nota: Si no retira el tornillo de retención de la tapa superior (A), no podrá utilizar la función de acceso rápido para abrir la máquina y limpiarla o realizarle mantenimiento.

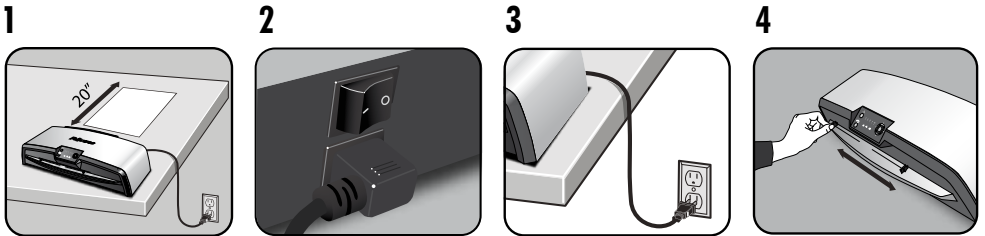


LAMINATOR CONTROLS

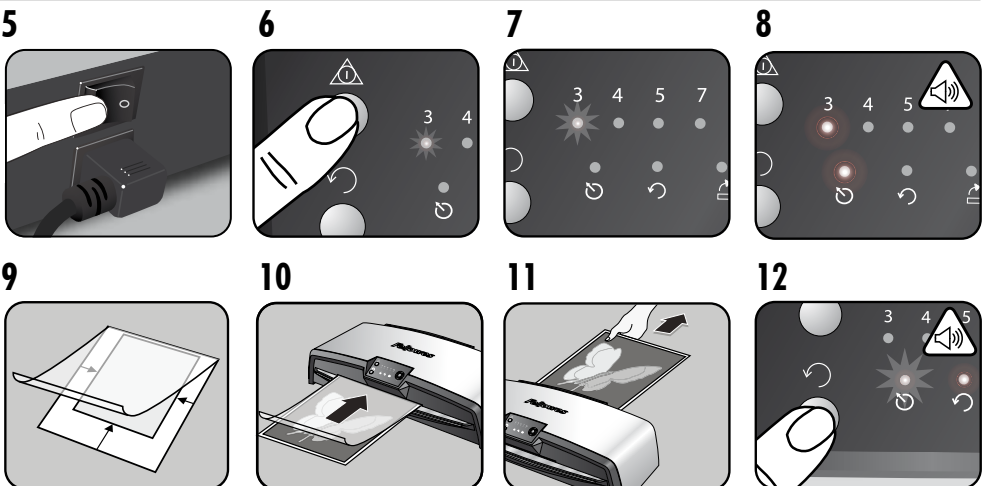


QUICK START GUIDE

SETTING UP THE LAMINATOR



STEPS TO LAMINATE



CAPABILITIES

Performance

Entry width	12.5" / 317mm
Estimated heat-up time	4 minutes
Cool down time	30-60 minutes
Lamination speed	variable - max. 35" / 90cm/min
Laminating mechanism	Belt-drive
Ready indication	Light & beep
Easy-Access open mechanism	Yes
HeatGuard™ technology	Yes
Clear Path	Yes
Auto shut-off	Yes (30 mins)
Photo-capable	Yes
Carrier-free	Yes

Technical Data

Voltage / Frequency / Current(Amps)	120V AC, 60Hz, 8.5A
Wattage	1100 Watts
Dimensions (WxDxH)	25" x 8.5" x 6.3" / 634 x 215 x 159mm
Net weight	22lb / 10 kg
Laminating capacity (max thickness)	0.04"
Max pouch thickness	10 Mil. / 250 micron (total thickness = 2 x 10 = 20 Mil.)

IMPORTANT SAFETY INSTRUCTIONS



CAUTION:

Please read before use and keep for future reference.

When laminating:

- plug the machine into an easily accessible main socket.
- to prevent electrical shock - do not use the appliance close to water, do not spill water on to the appliance, power cord or main socket.
- when working with very small pouch sizes (less than 3" / 75mm long) place the pouch within a carrier or on a sheet of paper.

DO ensure the machine is on a stable surface.

DO test laminate scrap sheets before final laminations.

DO remove staples and other metal articles prior to laminating.

DO keep the machine away from heat and water sources.

DO turn off the machine after each use.

DO unplug the machine when not in use for an extended period.

DO use pouches designed for use at the appropriate settings.

DO keep away from pets, while in use.

DO only use Fellowes Roller Wipes (CRC #57037) for internal cleaning.

DO NOT use appliance if the power cord is damaged.

DO NOT attempt to open or otherwise repair the machine beyond the Easy-Access functions.

DO NOT exceed the machines quoted performance.

DO NOT allow children to use this machine without adult supervision.

DO NOT laminate sharp or metal objects (eg: staples, paper clips).



DO NOT laminate heat-sensitive documents (eg: tickets, ultrasounds etc).

DO NOT laminate with self-adhesive pouches (which require a cold setting).

DO NOT laminate an empty pouch.

DO NOT use sharp objects to clean laminator.

LAMINATOR CONTROLS

A	Easy-Access opening cover	G	Selection buttons (up/down/left/right)
B	Adjustable document entry guide	H	Select / OK button
C	Entry support shelf	I	Detachable document exit tray
D	Reverse button 	J	On/off switch (at rear)
E	Standby button 	K	Carry points (at sides)
F	LED user interface	L	Ready LED

FEATURES & TIPS

Titan™ operates at a fixed temperature. The user only needs to select the required pouch setting before laminating. There is no need to wait for the machine to warm-up or cool-down when switching between thick or thin pouch settings. Once the laminator has reached normal operating temperature, simply select the pouch thickness required and laminate immediately.

FEATURES



'Hot Swap' function.

The Hot Swap function enables the user to instantly switch between thick and thin pouch settings without any processing delays.



Easy-Access open mechanism

The Easy-Access mechanism allows user to safely and easily open the laminator for cleaning and maintenance.



HeatGuard™ technology

Keeps the laminator surface up to 50% cooler and makes it more energy efficient than comparable laminators.



'Safe Start' function

When switched on, the machine has a default 'Safe Start' function which is set to the 3 Mil. setting. You may select other thickness settings as required.



Power Save

The Auto shut-down switches the machine off if it hasn't been used for 30 mins to save energy.

To return to the "Home" Menu at any stage, press the "Left/back" key on the navigation buttons.

TIPS

- Always put item into the appropriate sized pouch.
- Always test laminate with a similar size and thickness before final process.
- If required, trim excess material from around the item after lamination and cooling.
- For best results, use Fellowes® brand laminating pouches: Enhance 3 Mil, Capture 5 Mil, Protect 7 Mil, Preserve 10 Mil.
- When working with different pouch thickness' (temperature settings) it is recommended to start first with the thinnest pouches.
- Prepare pouch and item for lamination. Center item in pouch against the leading sealed edge. Ensure the pouch is not too large for the item.
- Please read these instructions before use.

SETTING UP THE LAMINATOR

1. Place the machine on a stable surface. Ensure enough clear space behind the machine to allow items to pass through freely.
2. Connect the supplied power cord to the machine.
3. Plug the machine into an easily accessible main socket.
4. To fully support pouches and items of different sizes use the adjustable entry guide to center the item before laminating. Place exit tray onto the rear of the machine.

STEPS TO LAMINATE

5. Switch the power on (Power switch located at the rear of the machine).
6. Select the 'Standby' button on the control panel. The 3 Mil. and ready LED's will flash for 5 seconds before automatically selecting the 3 Mil. heat setting. Any setting can be selected at any time as required. Allow the machine to cool before opening.
The LED interface allows selection of these functions:
 - 3, 4, 5, 7, 10 Mil. pouch settings
 - Manual laminating
 - Reverse
 - 'Easy-Access' for cleaning and maintenance.
7. The laminator will automatically select the thinnest pouch setting (3 Mil.) within 5 seconds of power-on unless another setting is selected. During warm-up or cool-down, the selected pouch setting will flash red.
8. When the laminator has reached the chosen setting, the LED will stop flashing and glow red. The machine will sound 2 short alerts.
9. Place item into open pouch. Center the item against the sealed front edge. Use the appropriate pouch size for the item.
10. Place the pouch, sealed edge first into the document entry. Keep the pouch straight and centered within the document entry, not on an angle. Use the entry markings as a guide.
11. Upon exit, the laminated pouch is hot and soft. Take care and remove the pouch immediately. Place the pouch onto a flat surface to cool. This helps prevent any jamming.
12. To reverse the laminating process at any stage, press and hold the 'Reverse' button to eject the item. The laminator will sound alerts continuously and the ready LED will flash.

NEED HELP?

Let our experts help you with a solution.

Customer Service: www.fellowes.com

Always call Fellowes before contacting your place of purchase.

See back cover for useful telephone numbers.

MAINTENANCE - Easy-Access™

The Titan™ laminator can be opened manually by selecting the 'open' setting (⏏) on the control panel. Please note: the power supply and the machine must both be **ON** to release the electronic safety catch.



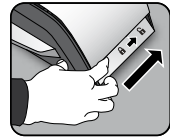
Select the 'open' setting (⏏) using the navigation buttons on the control panel. Press 'OK' button.



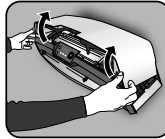
The ready LED will flash and the machine will cool down. This may take between 30-60 minutes.



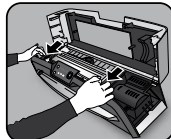
When the machine has cooled to a safe temperature, the ready LED will stop flashing and an alert will sound.



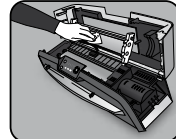
To open the top cover, move the levers on each side of the machine backwards to release the electronic safety catch.



Lift the top cover with both hands. The laminating engine and belt-drive mechanism will be visible.



To open the belt-drive mechanism, Pull the 2 cam levers forwards, on each side of the mechanism. The upper carriage can now be lifted upwards from the front. Lift the carriage and open fully until it stops in the rest position.

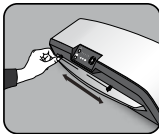


Take care when cleaning any residue from the rollers. Fellowes laminator wipes (CRC# 57037) are recommended.



IMPORTANT: When closing the mechanism, ensure the 2 cam levers are both pushed forwards to lock the belt-drive carriage correctly in position. The lid can be closed when the carriage is correctly locked.

ADJUSTABLE ENTRY GUIDE



The Entry Guide can be manually adjusted (especially for smaller documents) to ensure the items are best supported when inserted and helps avoid mis-feeds.

INTEGRATED CARRY POINTS



The Titan™ laminator has integrated carry points for safe and easy movement of the laminator – push in the flaps on both ends of the laminator to access them.

WORLDWIDE WARRANTY

Fellowes warrants all parts of the laminator to be free of defects in material and workmanship for 2 years from the date of purchase by the original consumer. If any part is found to be defective during warranty period, your sole and exclusive remedy will be repair or replacement, at Fellowes' option and expense, of the defective part. This warranty does not apply in cases of abuse, mishandling or unauthorized repair. Any implied warranty, including that of merchantability or fitness for particular purpose, is hereby limited in duration to the appropriate warranty period set forth above. In no event shall Fellowes be liable for any consequential damages attributable to this product. This warranty gives you specific legal rights. You may have other legal rights that vary from this warranty. The duration, terms and conditions of this warranty are valid worldwide, except where different limitations, restrictions or conditions may be required by local law. For more details or to obtain services under this warranty, please contact Fellowes or your dealer.

PRODUCT REGISTRATION

Thank you for purchasing a Fellowes product. Please visit www.fellowes.com/register to register your product and benefit from product news, feedback and offers. Product details can be found listed on the rating plate positioned on the rear side or underside of the machine.

STORAGE & EXTERNAL CLEANING

Unplug the machine at the wall. Allow the machine to cool.

The outside of the machine can be cleaned with a damp cloth. Do not use solvents or flammable materials to polish the machine. Cleaning sheets (CRC# 53206) can be used with the machine. When the machine is warm, run the sheets through the machine to clean any residue off the rollers.

TROUBLESHOOTING

Problem	Possible cause	Solution
No 'red' power on LED	Machine is not switched on	Switch on machine at rear next to plug inlet and at the wall socket
Ready light does not come on after a long period	Machine is in a hot or humid area	Move the machine to a cooler and dry area
Pouch does not completely seal the item	Item may be too thick to laminate	Pass through the machine again
	Thickness setting may be incorrect	Check pouch thickness is correctly selected and pass through again
Pouch has waves or bubbles	Thickness setting may be incorrect	Check pouch thickness is correctly selected and pass through again
Pouch is lost in the machine	Pouch is jammed	Select reverse button and pull out the item by hand. Select the open machine setting and clean the rollers.
Jamming	Pouch was used 'open end' first	
	Pouch was not centered on entry	
	Pouch was not straight upon entry	
	Empty pouch was used	
Pouch is damaged after lamination	Damaged rollers or adhesive on rollers	Pass cleaning sheets (CRC# 53206) through the machine to test and clean rollers. Select the open machine setting and clean the rollers with Fellowes roller wipes (CRC# 57037).
Cannot open top cover to gain 'Easy Access'	Top cover locking screw is still located on the left side of the machine	Remove the screw then open the lid as advised.
Small pouch is lost in the machine	Pouch may be too small to use without a carrier	Select 'Easy Access' and open the machine. Remove the pouch and laminate small pouches with a carrier or on a sheet of paper.



Useful Phone Numbers

FCC CLASS B NOTICE

Note: This equipment has been tested and found to comply with the limits for a Class B digital device, pursuant to part 15 of the FCC Rules. These limits are designed to provide reasonable protection against harmful interference in a residential installation. This equipment generates, uses and can radiate radio frequency energy and, if not installed and used in accordance with the instructions, may cause harmful interference to radio communications. However, there is no guarantee that interference will not occur in a particular installation. If this equipment does cause harmful interference to radio or television reception, which can be determined by turning the equipment off and on, the user is encouraged to try to correct the interference by one or more of the following measures:

- Reorient or relocate the receiving antenna.
- Increase the separation between the equipment and receiver.
- Connect the equipment into an outlet on a circuit different from that to which the receiver is connected.
- Consult the dealer or an experienced radio/TV technician for help.

CANADA CLASS B NOTICE - AVIS CANADA, CLASSE B

This Class B digital apparatus complies with Canadian ICES-003.

Cet appareil numérique de la classe B est conforme à la norme NMB-003 du Canada.

MODIFICATIONS

Any modifications made to this device that are not approved by Fellowes may void the authority granted to the user by the FCC and/or by Industry Canada to operate this equipment.

Toutes modifications apportées à ce dispositif et non approuvées par Fellowes annuleront le droit accordé à l'utilisateur par le FCC et/ou par Industrie Canada de faire fonctionner cet équipement.

Fellowes

Australia +61-3-8336-9700

Benelux +31-(0)-76-523-2090

Canada +1-905-475-6320

Deutschland +49-(0)-5131-49770

España / Portugal + 34 902 33 55 69

France +33-(0)-1-78-64-91-00

Italia +39-71-730041

Japan +81-(0)-3-5496-2401

Korea +82-(0)-2-3462-2844

Malaysia +60-(0)-35122-1231

Polska +48-(22)-771-47-40

Russia +7-(495)-228-14-03

Singapore +65-6221-3811

United Kingdom +44-(0)-1302-836836

United States +1-630-893-1600



1789 Norwood Avenue, Itasca, Illinois 60143-1095 • USA • 630-893-1600

fellowes.com

Australia Canada Deutschland France Japan Polska United Kingdom
Benelux China España Italia Korea Singapore United States

Free Manuals Download Website

<http://myh66.com>

<http://usermanuals.us>

<http://www.somanuals.com>

<http://www.4manuals.cc>

<http://www.manual-lib.com>

<http://www.404manual.com>

<http://www.luxmanual.com>

<http://aubethermostatmanual.com>

Golf course search by state

<http://golfingnear.com>

Email search by domain

<http://emailbydomain.com>

Auto manuals search

<http://auto.somanuals.com>

TV manuals search

<http://tv.somanuals.com>