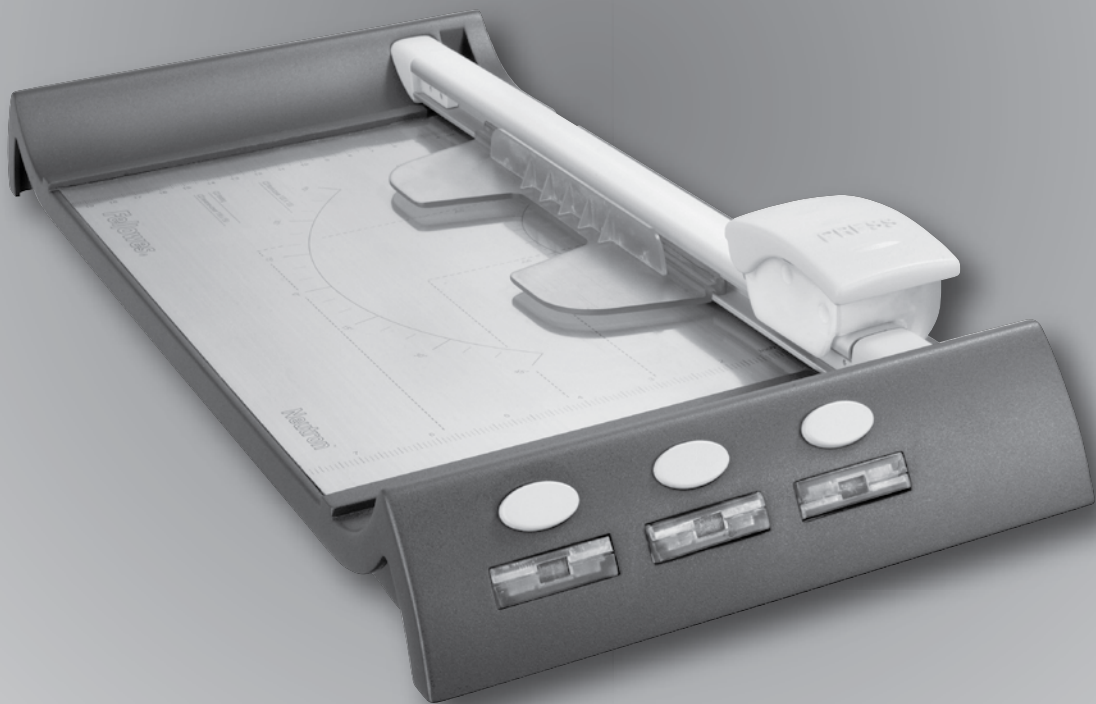




SafeCut™ Rotary Trimmers

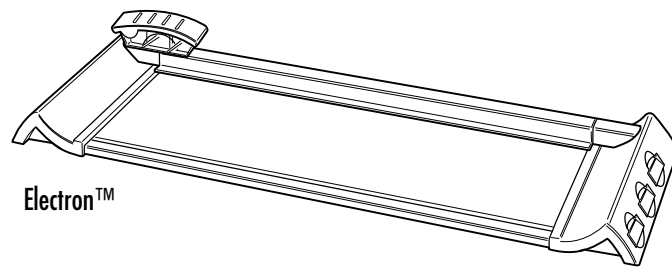
Neutron™ / Neutron™ Plus
Proton™
Electron™



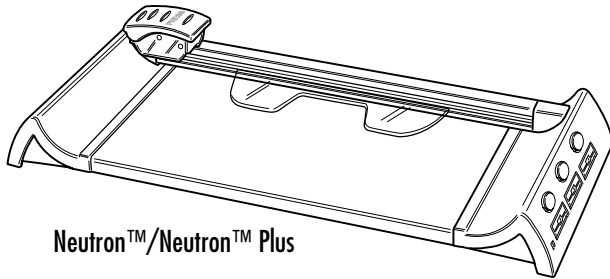
Please read these instructions before use.

Veuillez lire ces instructions avant utilisation.

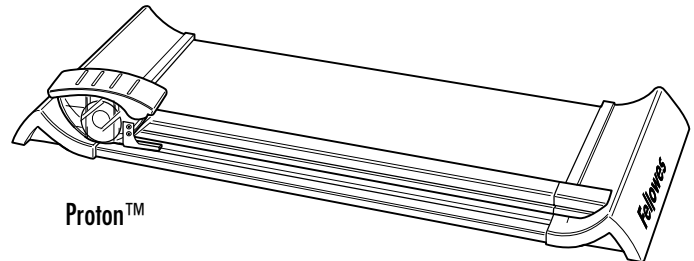
Lea estas instrucciones antes del uso.



Electron™



Neutron™/Neutron™ Plus



Proton™

CAPACITIES AND CONTENT

CRC #	Model	Number of blades	Cutting Length (mm)	Cutting Length (inch)	Cutting capacity (sheets 20 lb)
54100	Neutron	1	320	12	10
54101	Neutron Plus	4	320	12	10
54102	Proton 120	1	320	12	10
54103	Proton 180	1	460	18	10

CRC #	Model	Number of blades	Cutting Length (mm)	Cutting Length (inch)	Cutting capacity (sheets 20 lb)
54104	Electron 120	4	320	12	10
54105	Electron 180	4	460	18	10

IMPORTANT SAFETY INSTRUCTIONS — Read Before Using!

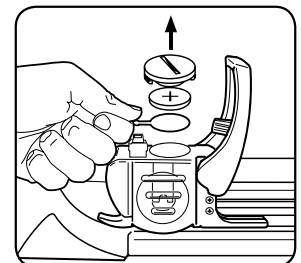
CAUTION

- Caution: blades are extremely sharp.
- SafeCut™ cassette encloses blades — do not try to extract blades manually.
- Always supervise children during use.
- Do not overload trimmer.
- Keep pets away from trimmer while in use.
- Do not open or attempt to repair, as this will void your warranty. Contact Customer Service if you have questions. Please note the warranty does not apply in cases of abuse, mishandling or unauthorized repair.
- Do not try to open SafeCut™ blade cartridges.

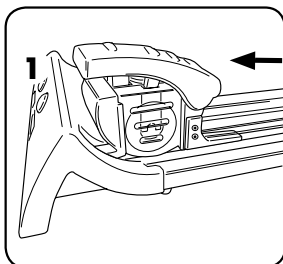
Electron™ SET-UP

To operate:

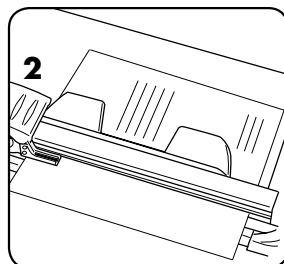
1. Remove battery and cover
2. Remove plastic film
3. Re-insert battery and cover



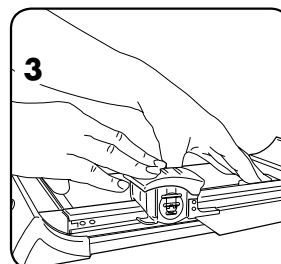
CUTTING PAPER AND PHOTOS



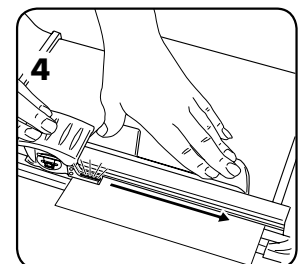
1. Slide cutting carriage to one end into lock position.



2. Place item (e.g. photo or paper) onto cutting table.

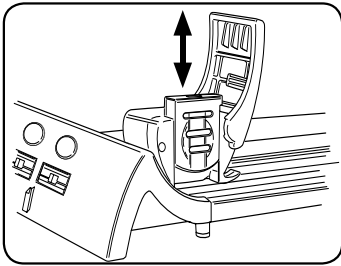


3. Hold paper steady with hand or clamping mechanism. To activate cutting blade, push down carriage handle. (Electron: when pressing handle down, LED will glow)

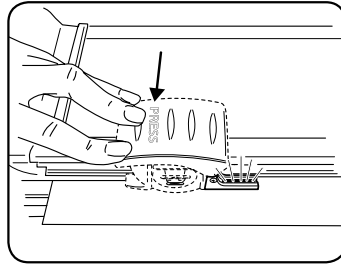


4. To cut, push handle downwards and slide carriage along until reaching the end of the bar. At the end of the bar, release the carriage and the clamping mechanism will release. For cutting larger capacities press blade harder on side nearest the cutting strip.

SAFECUT™ SAFETY FEATURES



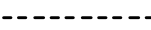





The SafeCut™ cartridge system allows users to change the cutting cartridge without touching the blades.



The SafeCut™ LED Guide on the Electron trimmer for illuminated precision. Safer than laser guides.

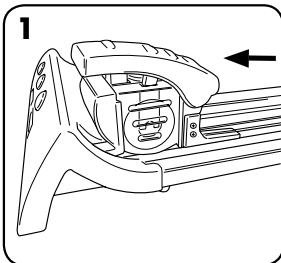
ACCESSORY PACKS

3 Creative SafeCut™ blades		Cutting capacity (sheets 20 lb)
	 Wave Cut	5
	 Perforate	5
	 Fold (crease)	3

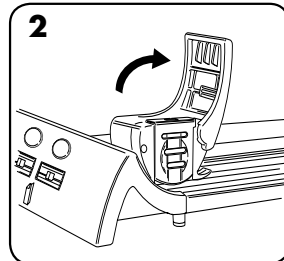
To Order: US: 800-955-0959 Canada: 1-800-665-4339

CRC#	Pack contents
54113	3 Creative SafeCut™ blades (1x wave, 1x perforate, 1x fold)
54114	2 Straight SafeCut™ blades
54115	12" Cutting strips (x3) Strip will need to be trimmed to fit Neutron™ and Neutron Plus models
54116	18" Cutting strips (x3)

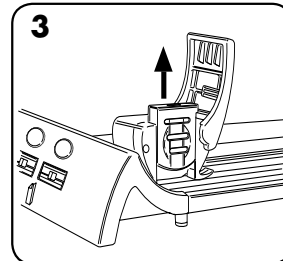
CHANGE SAFECUT CARTRIDGE



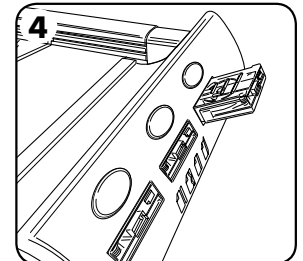
1. Slide cutting carriage to one end into lock position.



2. Lift carriage handle up.

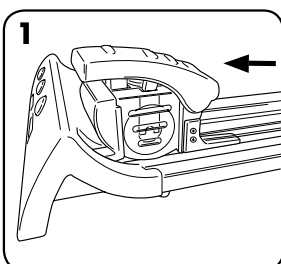


3. Pull SafeCut™ cartridge upwards out of cutting carriage and insert new cartridge (push down to click into place).

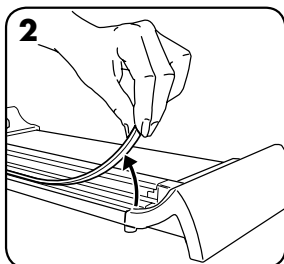


4. Press yellow button to release cassette from base. Return into storage slot in base.

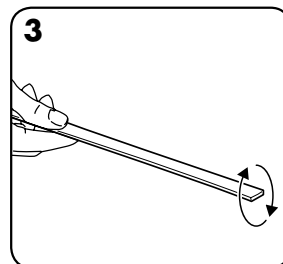
CHANGING CUTTING STRIP



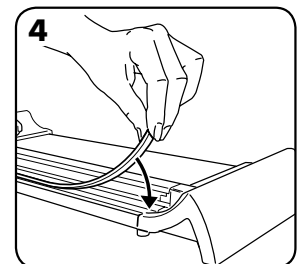
1. Slide cutting carriage to one end into lock position.



2. Remove cutting strip off trimmer base.

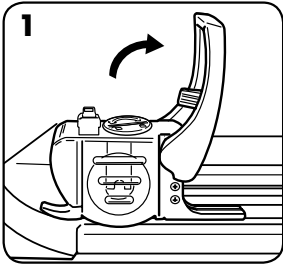


3. Turn cutting strip over to use both sides.

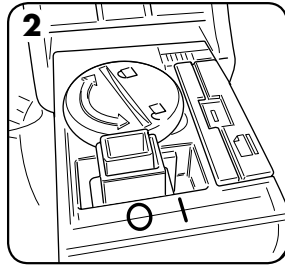


4. Replacement strips available (see accessory details).

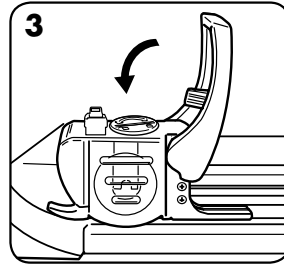
ELECTRON SAFECUT™ LED GUIDE



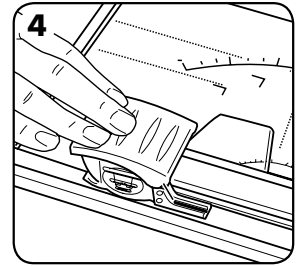
1. Slide cutting carriage to one end into lock position. Pull (swing) carriage handle up.



2. Turn switch to ON (I) position.

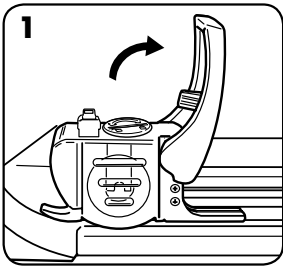


3. Pull (swing) carriage handle down.

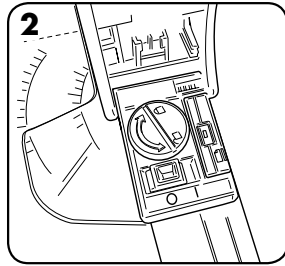


4. Press handle down to activate SafeCut™ LED Guide.

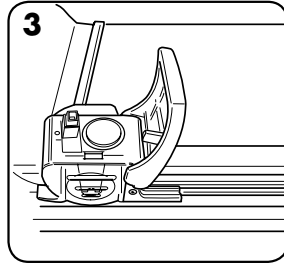
CHANGE BATTERY ON ELECTRON SAFECUT™ LED GUIDE



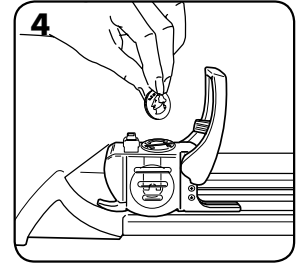
1. Slide cutting carriage to one end into lock position. Pull (swing) carriage handle up.



2. Unscrew battery cover with coin or screwdriver (left turn opens, right turn closes battery cover).



3. Remove old battery and replace with a new battery [type CR2032].



4. Close battery cover.

WARRANTY

Fellowes warrants all other parts of the machine to be free of defects in material and workmanship for 2 year from the date of purchase by the original consumer. If any part is found to be defective during the warranty period, your sole and exclusive remedy will be repair or replacement, at Fellowes' option and expense, of the defective part. This warranty does not apply in cases of abuse, mishandling, or unauthorized repair. ANY IMPLIED WARRANTY, INCLUDING THAT OF MERCHANTABILITY OR FITNESS FOR A PARTICULAR PURPOSE, IS HEREBY

LIMITED IN DURATION TO THE APPROPRIATE WARRANTY PERIOD SET FORTH ABOVE. In no event shall Fellowes be liable for any consequential or incidental damages attributable to this product. This warranty gives you specific legal rights. The duration, terms, and conditions of this warranty are valid worldwide, except where different limitations, restrictions, or conditions may be required by local law. For more details or to obtain service under this warranty, please contact us or your dealer. Accessories and consumables are excluded from this warranty.

Need Help?

Customer Service . . .
www.fellowes.com
Let our experts help you
with a solution.
Always call Fellowes
before contacting
your place of purchase.



Useful Phone Numbers

Help Line

Australia	+ 1-800-33-11-77
Canada	+ 1-800-665-4339
Europe	00-800-1810-1810

México	+ 1-800-234-1185
United States	+ 1-800-955-0959

Fellowes

Australia	+ 61-3-8336-9700
Benelux	+ 31-(0)-76-523-2090
Canada	+ 1-905-475-6320
Deutschland	+ 49-(0)-5131-49770
España	+ 34-91-748-05-01
France	+ 33-(0)-1-30-06-86-80
Italia	+ 39-071-730041

Japan	+ 81-(0)-3-5496-2401
Korea	+ 82-2-3462-2884
Malaysia	+ 60-(0)-35122-1231
Polska	+ 48-(0)-22-771-47-40
Singapore	+ 65-6221-3811
United Kingdom	+ 44-(0)-1302-836836
United States	+ 1-630-893-1600



1789 Norwood Avenue, Itasca, Illinois 60143-1095 • USA • 630-893-1600

fellowes.com

Australia
Benelux

Canada
China

Deutschland
España

France
Italia

Japan
Korea

Polska
Singapore

United Kingdom
United States

Free Manuals Download Website

<http://myh66.com>

<http://usermanuals.us>

<http://www.somanuals.com>

<http://www.4manuals.cc>

<http://www.manual-lib.com>

<http://www.404manual.com>

<http://www.luxmanual.com>

<http://aubethermostatmanual.com>

Golf course search by state

<http://golfingnear.com>

Email search by domain

<http://emailbydomain.com>

Auto manuals search

<http://auto.somanuals.com>

TV manuals search

<http://tv.somanuals.com>