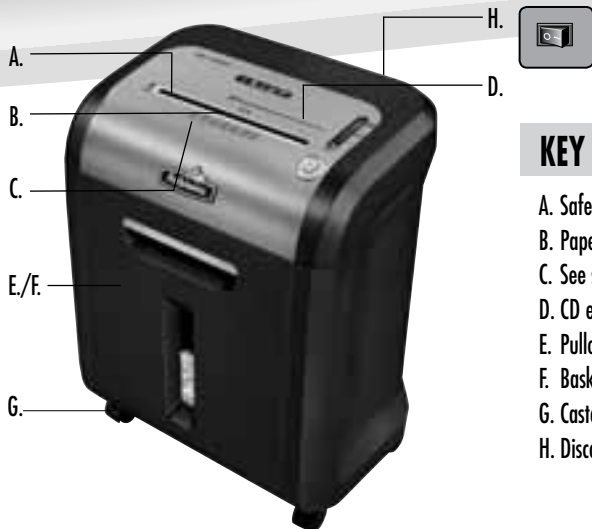




MS-450Ci



Please read these instructions before use.
Do not discard: keep for future reference.



KEY

- A. SafeSense® Technology
- B. Paper/card entry
- C. See safety instructions
- D. CD entry
- E. Pullout bin - Paper
- F. Basket - CD (inside)
- G. Casters
- H. Disconnect power switch

Control Panel and LEDs

- 1. Overheat (red)
- 2. Bin open (red)
- 3. Bin full (red)
- 4. Remove paper (red)
- 5. SafeSense® indicator (yellow)
- 6. Sheet capacity indicator

- 7. Auto correcting button (blue)
- 8. Reverse
- 9. ON/OFF (blue)
- 10. Forward

CAPABILITIES

Will shred: Paper, credit cards, CD/DVD's, and standard staples

Will not shred: Adhesive labels, continuous form paper, transparencies, newspaper, cardboard, *paper clips, non-standard staples, 3 1/2" diskettes, laminates, file folders, X-rays or plastic other than noted above

Paper/Card shred size:

Micro-Cut 5/64 inches x 25/64 inches (2mm x 10mm)

CD shred size:

Strip-Cut 25/64 inches (10mm)

*Paper clip shredding is not recommended for this shredder

Maximum:

Sheets per pass 7*
 CDs/Cards per pass 1*
 Paper/card entry width 9 inches (230mm)
 CD entry width 5 13/64 inches (132mm)

*8.5 inches x 11 inches, 20lb., (75g) paper at 120V, 60 Hz, 3.0 Amps; heavier paper, humidity or other than rated voltage may reduce capacity. Recommended daily usage rates:

25-50 shredding passes per day, 25 credit cards; 10 CDs 7 sheets per pass.

Fellowes SafeSense® shredders are designed to be operated in home and office environments ranging between 50 – 80 degrees Fahrenheit (10 – 26 degrees Celsius) and 40 – 80% relative humidity.

ADVANCED PRODUCT FEATURES



Jam Proof System
 Eliminates frustrating jams by preventing overloads and powering through misfed paper.



Patented SafeSense® Technology
 Stops shredder immediately when hands are too close to the paper entry.



SilentShred™ Technology
 SilentShred™ noise quality shreds without noisy disruptions.



MicroShred Technology
 MicroShred cut provides maximum security by shredding paper into over 3000 particles per 8 1/2" x 11" sheet.

⚠ WARNING: IMPORTANT SAFETY INSTRUCTIONS — Read Before Using!



- Keep away from children and pets. Keep hands away from paper entry. Always set to off or unplug when not in use.
- Keep foreign objects – gloves, jewelry, clothing, hair, etc. – away from shredder openings. If object enters top opening, switch to Reverse (◀◀) to back out object.
- Never use aerosol products, petroleum based lubricants or other flammable products on or near shredder. Do not use canned air on shredder.
- Do not use if damaged or defective. Do not disassemble shredder. Do not place near or over heat source or water.
- This shredder has a Disconnect Power Switch (H) that must be in the ON (I) position to operate shredder. In case of emergency, move switch to OFF (O) position. This action will stop shredder immediately.
- Avoid touching exposed cutting blades under shredder head.
- Use only designated entry for shredding CDs.
- Keep fingers away from CD hole when shredding.
- Do not put foreign objects in paper entry.
- The grounded socket-outlet shall be installed near the equipment and shall be easily accessible.

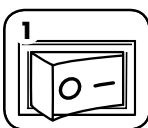
BASIC SHREDDING OPERATION



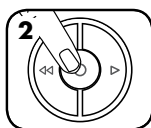
Continuous operation:
 10-minute maximum

NOTE: Shredder runs briefly after each pass to clear entry. Continuous operation beyond 10-minutes will trigger 25-minute cool down period.

PAPER/CARD OR CD



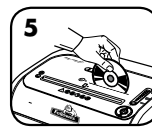
Plug in and put disconnect power switch in ON (I) position



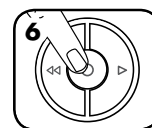
Press (I) ON to activate (blue)



Feed paper/Card straight into paper entry and release



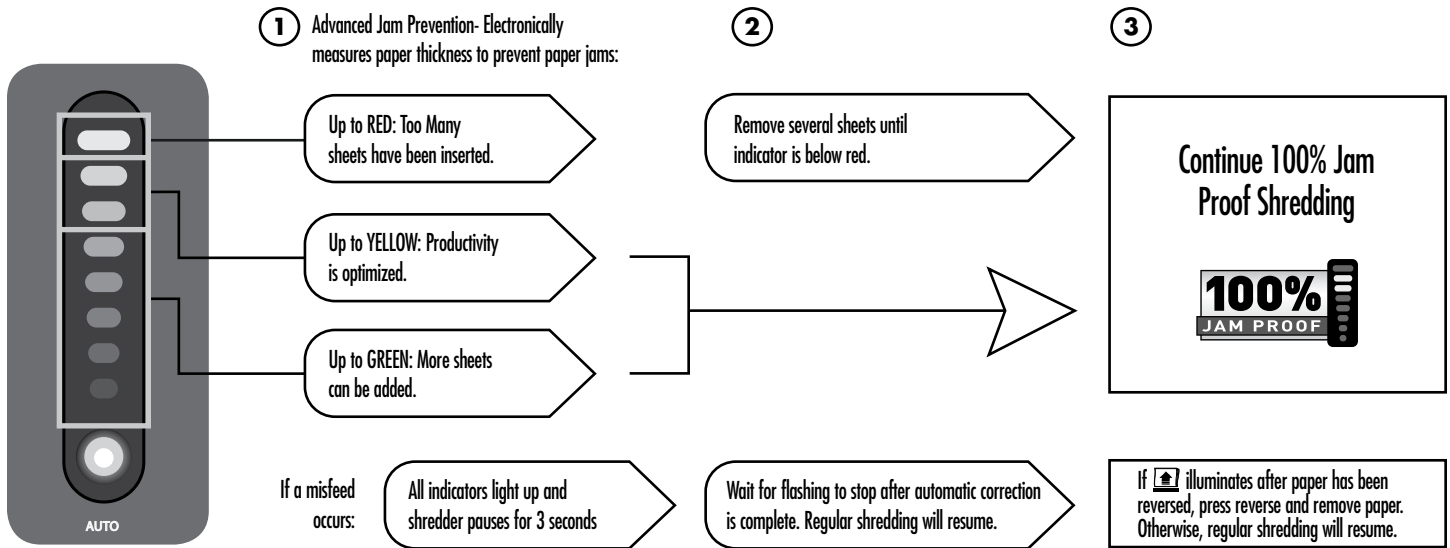
Hold CD at edge, feed into CD entry and release



When finished shredding set to OFF (O)

www.fellowes.com features an extensive on-line support section with a number of self-service options

Eliminates frustrating jams by preventing overloads and powering through misfed paper.



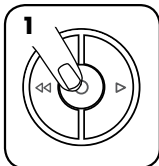
*100% Jam Proof when used in accordance with user manual



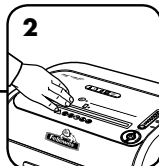
SAFESENSE® TECHNOLOGY OPERATION

OILING SHREDDER

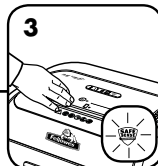
SET-UP AND TESTING



Turn the shredder ON (⏻) to activate SafeSense®

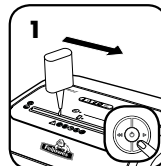


Touch test area and look for the SafeSense® indicator to illuminate

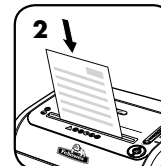


SafeSense® is active and working properly

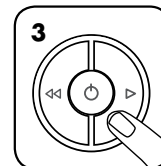
FOLLOW OILING PROCEDURE BELOW AND REPEAT TWICE



*Apply oil across entry and press forward (▶)



Shred one sheet



Press and hold forward (▶) 2-3 seconds

PREVENTIVE MAINTENANCE AND MISCELLANEOUS TROUBLESHOOTING

- *For peak performance, we recommend oiling microshred shredders each time the waste bin is emptied. Only use a non-aerosol vegetable oil (Fellowes 35250). Machines not oiled may lose sheet capacity, become noisy, and ultimately stop running.
- Though paper detection sensors are designed to be maintenance free, the sensors occasionally become blocked by paper dust, causing the motor to run even if there is no paper present. (Both paper detection sensors are located in the center of the paper entry).
- Once a day run shredder in reverse for 15 seconds to clear cutters.
- Empty wastebasket when bin full indicator lights up (bag # 36052).
- Shredder won't run if the waste bin is not pushed all the way in, or bin needs to be emptied.
- When shredding for a prolonged period of time, the motor can become warm and require a cool down period. When this occurs, the overheat indicator will alert you to the problem, this model will require 25 minutes to cool down.

Go to Support Section at www.fellowes.com or see back page of manual for useful telephone numbers.



WARRANTY

LIMITED WARRANTY Fellowes, Inc. ("Fellowes") warrants the cutting blades of the machine to be free from defects in material and workmanship for 5 years from the date of purchase by the original consumer. Fellowes warrants all other parts of the machine to be free of defects in material and workmanship for 1 year from the date of purchase by the original consumer. If any part is found to be defective during the warranty period, your sole and exclusive remedy will be repair or replacement, at Fellowes' option and expense, of the defective part.

This warranty does not apply in cases of abuse, mishandling, or unauthorized repair. ANY IMPLIED WARRANTY, INCLUDING THAT OF MERCHANTABILITY OR FITNESS FOR A PARTICULAR PURPOSE,

IS HEREBY LIMITED IN DURATION TO THE APPROPRIATE WARRANTY PERIOD SET FORTH ABOVE. In no event shall Fellowes be liable for any consequential or incidental damages attributable to this product.

This warranty gives you specific legal rights. The duration, terms, and conditions of this warranty are valid worldwide, except where different limitations, restrictions, or conditions may be required by local law.

For more details or to obtain service under this warranty, please contact us or your dealer.

Help Line

Australia	+1-800-33-11-77
Canada	+1-800-665-4339

Europe	00-800-1810-1810
Mexico	+1-800-234-1185
United States	+1-800-955-0959



1789 Norwood Avenue, Itasca, Illinois 60143-1095 • USA • 630-893-1600

www.fellowes.com

Australia
Benelux

Canada
China

Deutschland
España

France
Italia

Japan
Koreva

Polska
Singapore

United Kingdom
United States

Free Manuals Download Website

<http://myh66.com>

<http://usermanuals.us>

<http://www.somanuals.com>

<http://www.4manuals.cc>

<http://www.manual-lib.com>

<http://www.404manual.com>

<http://www.luxmanual.com>

<http://aubethermostatmanual.com>

Golf course search by state

<http://golfingnear.com>

Email search by domain

<http://emailbydomain.com>

Auto manuals search

<http://auto.somanuals.com>

TV manuals search

<http://tv.somanuals.com>