



A Sierra Monitor Company

Driver Manual
(Supplement to the FieldServer Instruction Manual)

FS-8700-122
X30 Profibus DP Master

APPLICABILITY & EFFECTIVITY

Effective for all systems manufactured after May 1, 2001

Driver Version:	1.01
Document Revision:	3

TABLE OF CONTENTS

1. X30 PROFIBUS DP MASTER DESCRIPTION.....	3
2. DRIVER SCOPE OF SUPPLY.....	4
2.1. Supplied by FieldServer Technologies for this driver	4
2.2. Provided by the Supplier of 3 rd Party Equipment.....	4
2.2.1. <i>Required 3rd Party Software</i>	4
2.2.2. <i>Required 3rd Party Configuration</i>	4
3. HARDWARE CONNECTIONS	5
3.1. Hardware Connection Tips / Hints.....	5
4. CONFIGURING THE FIELDSEVER AS A X30 PROFIBUS DP MASTER CLIENT.....	6
4.1. FieldServer	6
4.2. Data Arrays/Descriptors	6
4.3. Client Side Connection Descriptions	7
4.4. Client Side Node Descriptors	7
4.5. Client Side Map Descriptors	8
4.5.1. <i>FieldServer Related Map Descriptor Parameters</i>	8
4.5.2. <i>Driver Related Map Descriptor Parameters</i>	8
4.5.3. <i>Timing Parameters</i>	8
4.6. Map Descriptor Example.	9
4.7. Configuring the Embedded Profibus Database	10
APPENDIX A. TROUBLESHOOTING TIPS.....	15
Appendix A.1. Connection Tips & Hints.....	15

1. X30 Profibus DP Master Description

The FieldServer Profibus X30 DP Master driver can be used to transfer I/O data with up to 125 Profibus DP Slave devices. The FieldServer is programmed with an embedded database using the required 3rd party configuration tool. The embedded database contains information on the number of slaves and I/O modules to be transferred with each slave. The tool requires the input of GSD/E files for each slave to be connected.

Max Nodes Supported

FieldServer Mode	Nodes	Comments
CLIENT DPV1 MASTER (CLASS 1) ONLY	125	The FieldServer can connect up to so many Profibus DP Slave devices.

A maximum total of 1536 bytes can be transferred with all DP Slaves

2. Driver Scope of Supply

2.1. Supplied by FieldServer Technologies for this driver

FieldServer Technologies PART #	Description
FS-8700-122	Driver Manual.
X30-Profibus DP Master	Profibus X30 DP Master Card

2.2. Provided by the Supplier of 3rd Party Equipment

2.2.1. Required 3rd Party Software

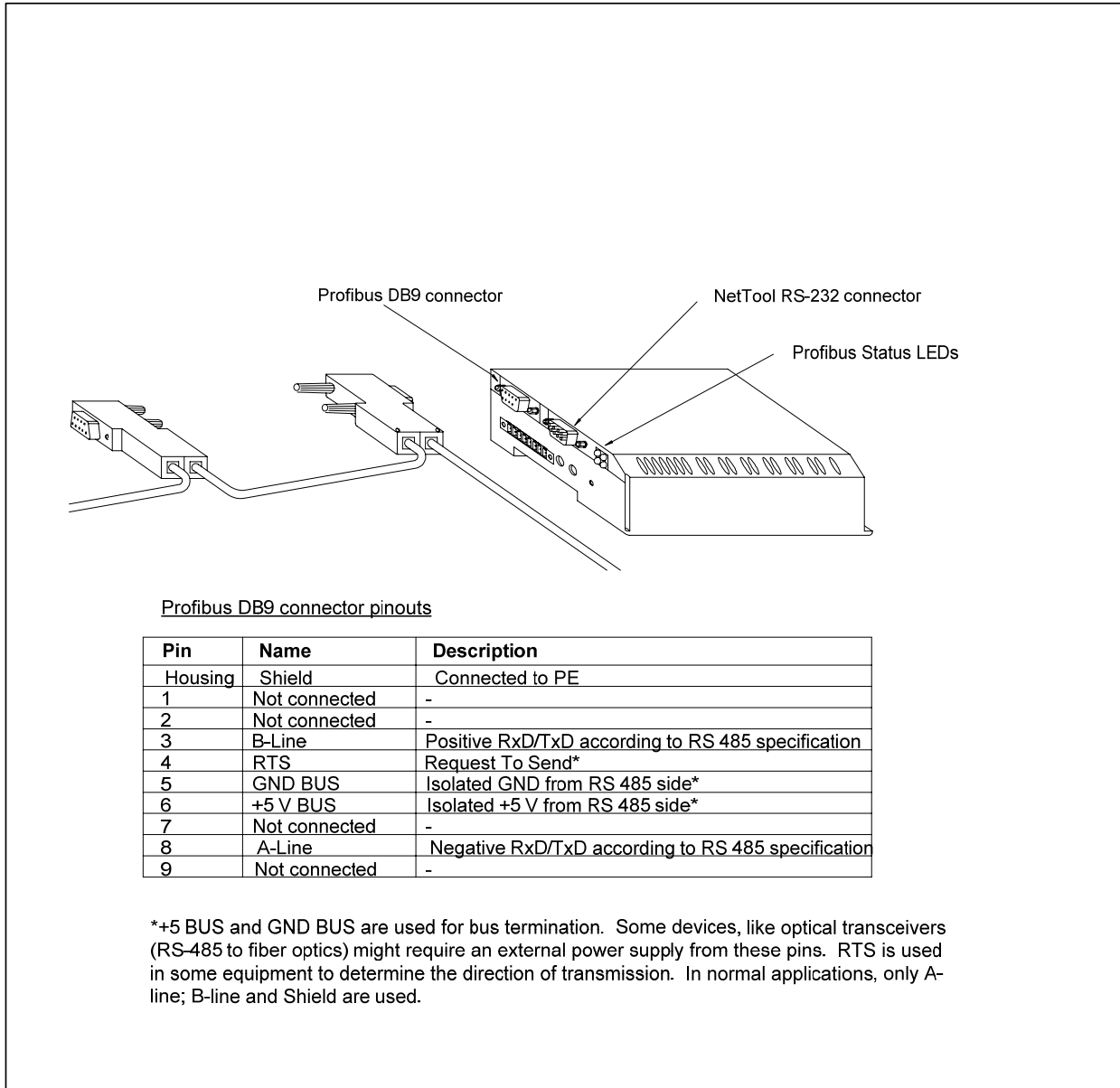
HMS Anybus NetTool for Profibus

2.2.2. Required 3rd Party Configuration

Connection to a correctly terminated Profibus network.

3. Hardware Connections

The FieldServer is connected to the Profibus network as shown in the connection drawing below.



3.1. Hardware Connection Tips / Hints

Use the recommended network cable and terminators as specified by the Profibus network organization and/or the manufacturer of your network equipment.

4. Configuring the FieldServer as a X30 Profibus DP Master Client

For a detailed discussion on FieldServer configuration, please refer to the FieldServer Configuration Manual. The information that follows describes how to expand upon the factory defaults provided in the configuration files included with the FieldServer (See “.csv” sample files provided with the FieldServer).

This section documents and describes the parameters necessary for configuring the FieldServer to communicate with up to 125 Profibus DP Slaves.

4.1. FieldServer

Section Title		
FieldServer		
Column Title	Function	Legal Values
System_Station_Address	Profibus address of the X30 DP Master	0-125

4.2. Data Arrays/Descriptors

The configuration file tells the FieldServer about its interfaces, and the routing of data required. In order to enable the FieldServer for X30 Profibus DP Master communications, the driver independent FieldServer buffers need to be declared in the “Data Arrays” section, the destination device addresses need to be declared in the “Client Side Nodes” section, and the data required from the servers needs to be mapped in the “Client Side Map Descriptors” section. Details on how to do this can be found below.

Note that in the tables, * indicates an optional parameter, with the bold legal value being the default.

Section Title		
Data_Arrays		
Column Title	Function	Legal Values
Data_Array_Name	Provide name for Data Array	Up to 15 alphanumeric characters
Data_Array_Format	Provide data format. Each Data Array can only take on one format.	Float, Bit, UInt16, SInt16, Packed_Bit, Byte, Packed_Byte, Swapped_Byte
Data_Array_Length	Number of Data Objects. Must be larger than the data storage area required by the Map Descriptors for the data being placed in this array.	1-10,000

Example

```
// Data Arrays
Data_Arrays
Data_Array_Name,          Data_Array_Format,    Data_Array_Length
Byte_Output,              Byte,                  10
Byte_Input,               Byte,                  10
Word_Output,              Uint16,                10
Word_Input,               Uint16,                10
Float_Output,             Float,                 10
Float_Input,              Float,                 10
```

4.3. Client Side Connection Descriptions

Section Title		
Connections		
Column Title	Function	Legal Values
Adapter	Adapter Name	Prof_DP

Example

```
// Client Side Connections
Connections
Adapter
Prof_DP
```

4.4. Client Side Node Descriptors

Section Title		
Nodes		
Column Title	Function	Legal Values
Node_Name	Provide name for node	Up to 32 alphanumeric characters
Node_ID	Station address of physical remote Profibus Slave	0-125
Protocol	Specify protocol used	Anybus_Prof_DP_M

Example

```
// Client Side Nodes
Nodes
Node_Name,          Node_ID,          Protocol
PDP_SLV003,         3,                Anybus_Prof_DP_M
PDP_SLV125,         125,              Anybus_Prof_DP_M
```

4.5. Client Side Map Descriptors

4.5.1. FieldServer Related Map Descriptor Parameters

Column Title	Function	Legal Values
Map_Descriptor_Name	Name of this Map Descriptor	Up to 32 alphanumeric characters
Data_Array_Name	Name of Data Array where data is to be stored in the FieldServer	One of the Data Array names from "Data Array" section above
Data_Array_Offset	Starting location in Data Array	0 to maximum specified in "Data Array" section above
Function	Function of Client Map Descriptor	RDBC, WRBC

4.5.2. Driver Related Map Descriptor Parameters

Column Title	Function	Legal Values
Node_Name	Name of Node to fetch data from	One of the node names specified in "Client Node Descriptor" above
Profibus_Data_Type	Arrangement of buffer data	BYTE, WORD, BOOL, FLOAT
Address	Starting address of buffer in bytes	0 - 243
Length	Length of Map Descriptor	1 - 244 (BYTE) 1 - 122 (WORD) 1 - 1952 (BOOL) 1 - 61 (FLOAT)

Important Note:

A maximum combined total length of 1536 bytes are permitted for all Map Descriptors accessing Slave devices.

4.5.3. Timing Parameters

Column Title	Function	Legal Values
Scan_Interval	Rate at which data is transferred from FieldServer data arrays to Profibus Master buffers.	≥0.001s

4.6. Map Descriptor Example.

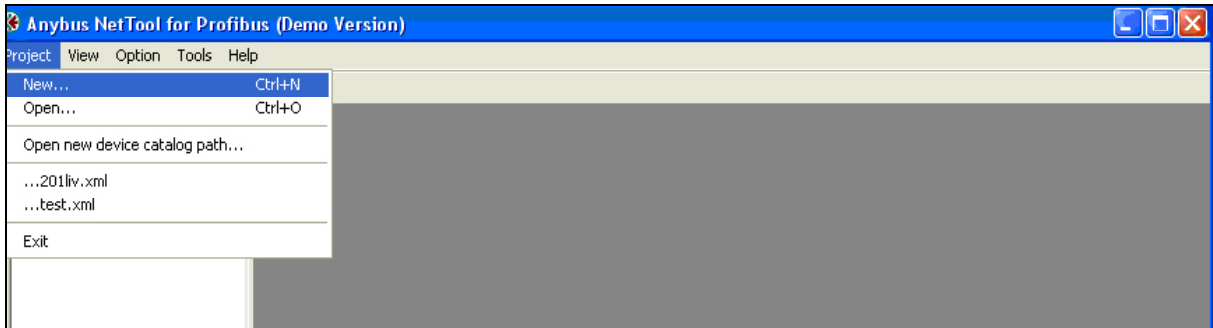
This example demonstrates the transfer of I/O data with Remote Profibus DP Slaves using Station Addresses of 1 and 125.

Map Descriptor								
Map_Descriptor_Name,	Data_Array_Name,	Data_Array_Offset,	Function,	Node_Name,	Profibus_Data_Type,	Address,	Length,	Scan_Interval
Word_In_003,	Word_Input,	0,	RDBC,	PDP_SLV003,	WORD	0,	50,	1s
Word_Out_003,	Word_Output,	0,	WRBC,	PDP_SLV003,	WORD	0,	50,	1s
Byte_In_125,	Byte_Input,	0,	RDBC,	PDP_SLV125,	BYTE,	0,	120,	1s
Byte_Out_125,	Byte_Output,	0,	WRBC,	PDP_SLV125,	BYTE,	0,	120,	1s

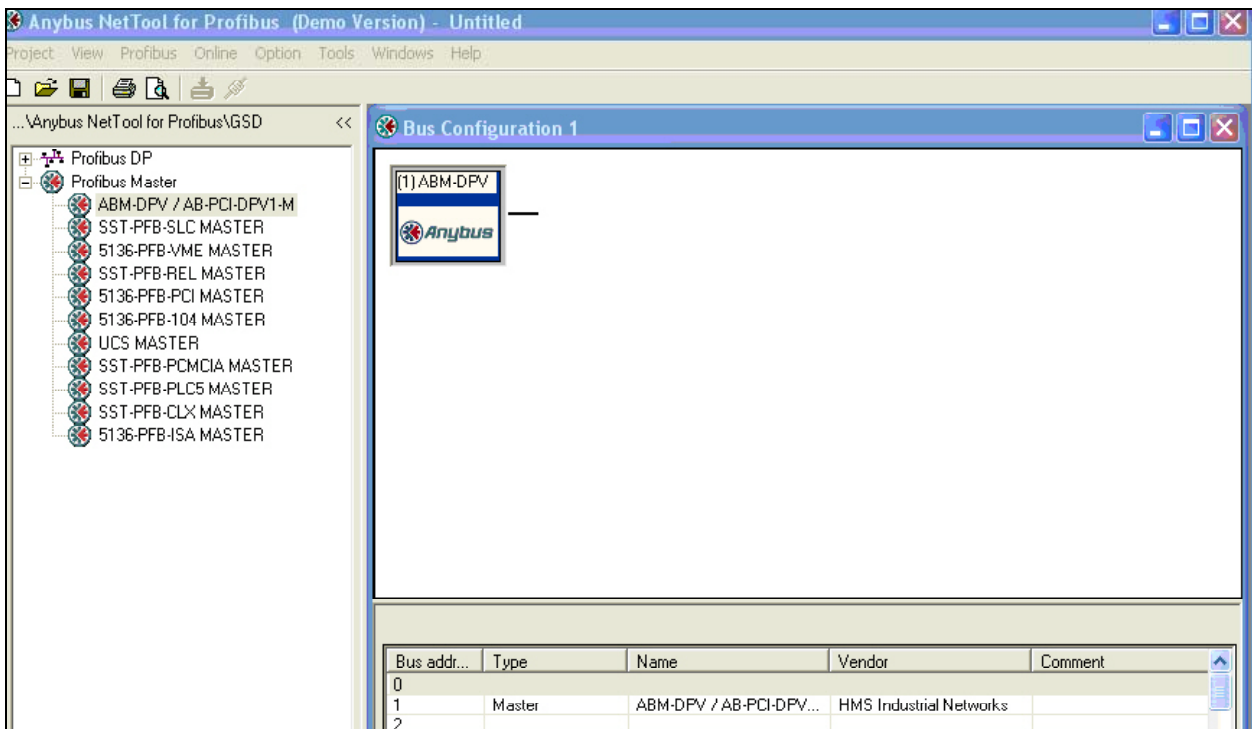
4.7. Configuring the Embedded Profibus Database

The X30 Profibus Master has to be configured with an embedded database that contains information about the Profibus Network data rate and remote Slave devices to access. The HMS Anybus NetTool for Profibus software must be installed and used for this purpose. Connect a serial RS-232 cable from the PC with the tool installed to the serial connector on the X30 as shown below:

- 1) Run the Tool and select Project-> New

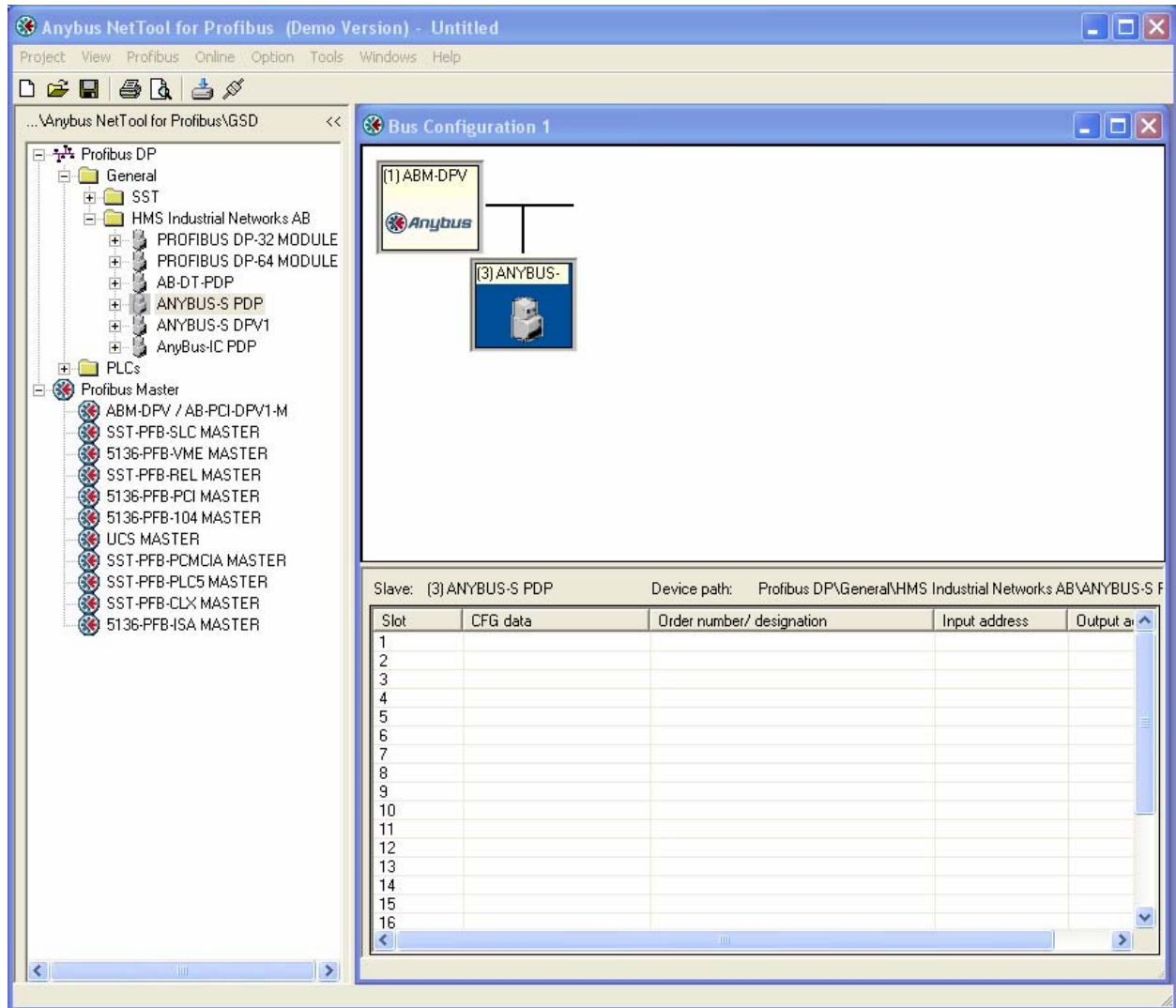


- 2) Expand the Profibus Master Tree, select the ABM-DPV device and drag it onto the Bus Configuration Screen. This is the X30 FieldServer Profibus DP Master device.

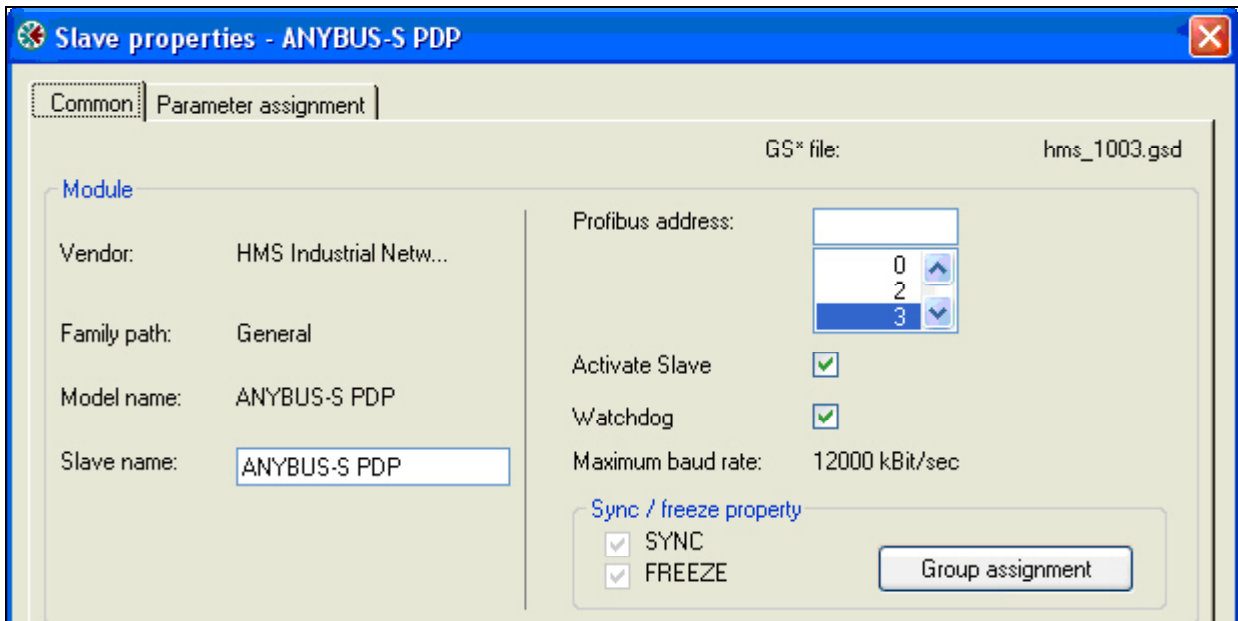


- 3) Expand the Profibus DP tree and drag the Slave Device you want to connect to onto the Bus Configuration window.

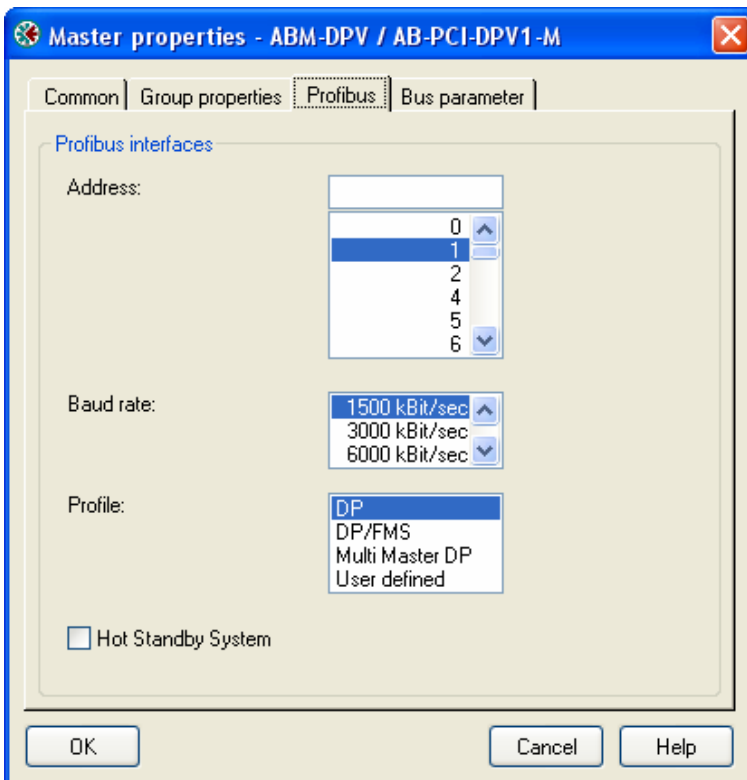
Note: If your device does not show up, import the device's GSD file by right clicking on Profibus DP and selecting Install new GS*-file. The ANYBUS-S PDP Slave device is shown here for illustration purposes.



- 4) Right-click on the Profibus Slave and assign its Profibus address.



- 5) Continue adding all other Slaves and setting their Profibus addresses.
- 6) Right click on the ABM-DPV Master device and select Object Properties. Set the Master Station Address to the same as the System_Station_Address used in the FieldServer's config.csv file. Also set the desired Profibus Network Baud rate.



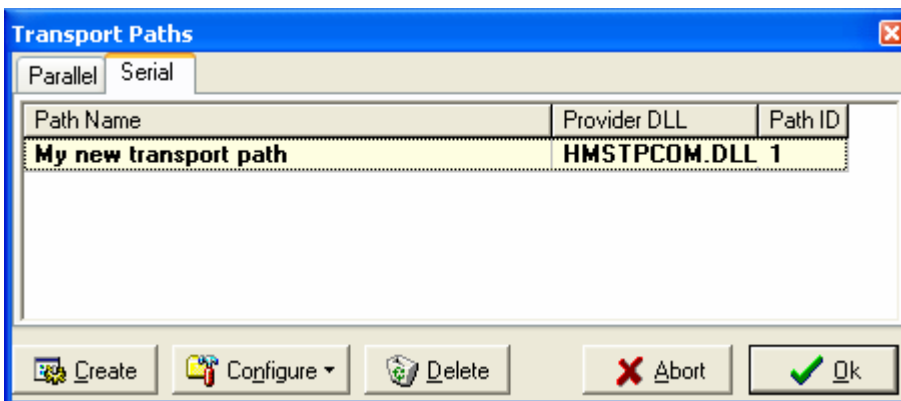
- 7) Select the first slave device, right-click on the Slot 1 line and choose Module selection. Now you have to add I/O modules up to the total number of bytes or words that will be transferred with this slave as set up in the config.csv file. For Example, for the Map Descriptor for Slave1 using 50 Words In and Out, you would choose the following modules:

Slot	CFG data	Order number/ designation	Input address	Output address
1	0xC0, 0x5F, 0x5F	IN/OUT: 64 Byte (32 word)	0...63	0...63
2	0x7F	IN/OUT: 32 Byte (16 word)	64...95	64...95
3	0x71	IN/OUT: 4 Byte (2 word)	96...99	96...99
4				
5				
6				
7				
8				
9				

- 8) Continue selecting other Slaves and adding modules for them as well.

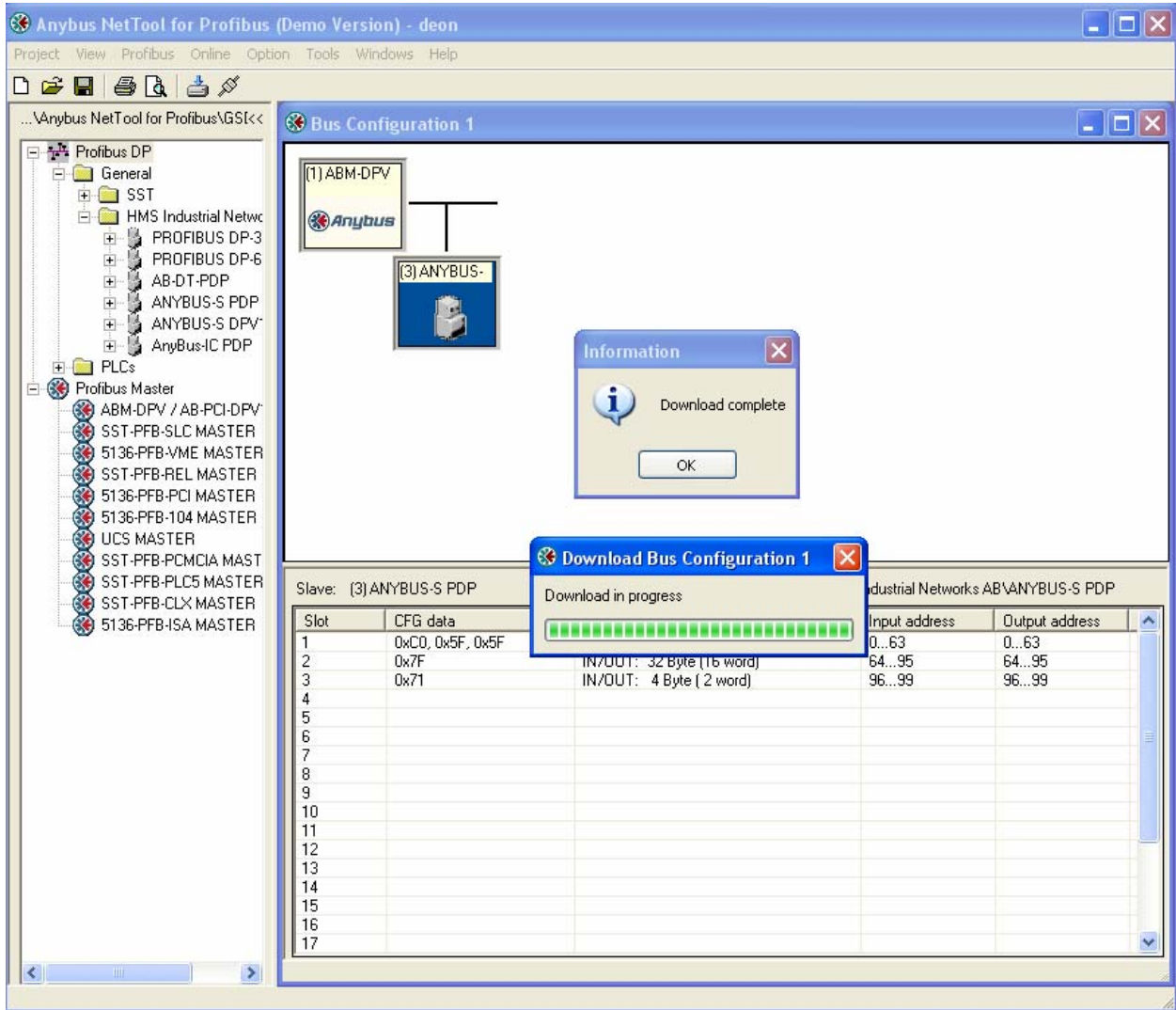
Important Note: Changing of Input and Output Addresses are not allowed. All addresses must be contiguous for the X30 Profibus to work correctly.

- 9) Select Online-> Driver selection and on the serial Tab, choose the serial port on the PC connected to the X30 by clicking on Configure-> Configure path.



- 10) Make sure the X30 FieldServer is running and you've downloaded a matching configuration file to it with Node and Map Descriptors for each slave you have just configured. Make sure you can connect with Ruinet to the X30 and there are no configuration errors.

- 11) Choose Online-> Download configuration to install the embedded database in the X30.



Important Note:

Note that the X30 must be running with a valid configuration file before it will allow download of a new database.

Appendix A. Troubleshooting tips

Appendix A.1. Connection Tips & Hints

An error message displays when trying to download the Profibus database?

- Ensure you have selected the correct serial port in the configure path setting.
- Ensure that the X30 is powered up with a valid configuration file declaring all the slaves to be communicated with.
- Confirm that the Run Led is flashing.
- The following message on the E screen of Ruinet is shown when the X30 detects a request for new database download:

Detected New Profibus Database!
Restarting FieldServer in 10 seconds...

THIS PAGE INTENTIONALLY LEFT BLANK

Free Manuals Download Website

<http://myh66.com>

<http://usermanuals.us>

<http://www.somanuals.com>

<http://www.4manuals.cc>

<http://www.manual-lib.com>

<http://www.404manual.com>

<http://www.luxmanual.com>

<http://aubethermostatmanual.com>

Golf course search by state

<http://golfingnear.com>

Email search by domain

<http://emailbydomain.com>

Auto manuals search

<http://auto.somanuals.com>

TV manuals search

<http://tv.somanuals.com>