

MA215
DYNAMIC
BASS
AMPLIFIER
INSTRUCTION
MANUAL



**OTHER
FIRST ACT®
PRODUCTS :**



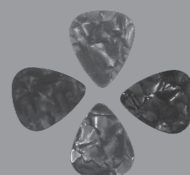
Guitar Case



10 & 20ft Cables



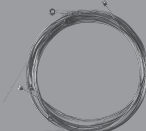
Auto Tuner



Picks



Books



Guitar Strings



Stringwinder



First Act Inc.
745 Boylston Street
Boston, MA 02116 USA
firstact.com



Customer Assistance
Phone: 888.551.1115
Email: info@firstact.com

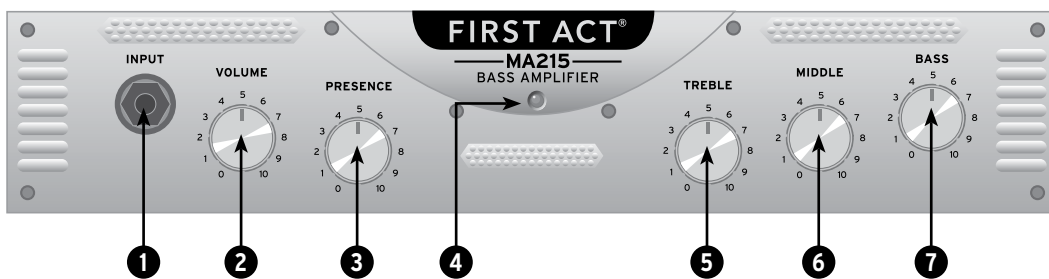
©2006 First Act Inc. All rights reserved.
First Act and the First Act logos are
trademarks of First Act Inc.
US Patent No. D487,627S
MA215.M.05

IMPORTANT SAFETY INSTRUCTIONS

Please read carefully before operating your amplifier:
Follow these basic precautionary measures to ensure a longer life for your amplifier, and to reduce the risk of electric shock.

1. This unit should be protected from contact with water, moisture, or liquids of any kind.
 2. This amplifier should only be serviced by a qualified repair technician.
 3. This unit should not be placed near a heat source (permissible operating temperature range 32-104°F).
 4. Do not set heavy objects on the power cable or allow the cable to be torn. If the cable needs repair, do not plug the amplifier in. Have the amplifier repaired immediately by a qualified service technician.
 5. Unplug your amplifier when not in use for extended periods of time.
 6. Turn amplifier power off when not in use.
 7. The outside of the amplifier may be cleaned with a dry cloth only. Do not use water or chemicals to clean.
 8. This unit contains digital circuitry and may cause interference if placed too close to radio or television receivers.
9. Do not operate the amplifier if:
 - » the unit or main cable has been visibly damaged
 - » the unit has been dropped
 - » the unit has been exposed to moisture/liquids of any kind
 - » the unit is not functioning properly
 10. Do not expose the unit to:
 - » Direct sunlight
 - » Excessive humidity
 - » Excessive dust
 - » Strong vibration
 11. This unit must be properly grounded.
 12. To prevent electric shock hazard, do not open the cabinet or chassis of the amplifier.

FACEPLATE



BACKPLATE



1. INPUT JACK

Connect instrument cable here.

2. VOLUME

Controls the total output level of amplifier.

3. PRESENCE

Enhances higher frequencies, dampens lower frequencies.

4. LED

Indicates power on/off.

5. TREBLE

Adjusts high frequency output.

6. MIDDLE

Adjusts middle frequency output.

7. BASS

Adjusts low frequency output.

8. POWER INPUT / FUSE COMPARTMENT

Connection for detachable UL-approved power cable. Use only the power cable supplied with this amplifier. Fuse compartment contains a replacement fuse to protect your amp from power surges, see instructions for Replacing the Fuse.

9. POWER

On/off switch.

10. AUDIO IN

Input jack for external audio device such as CD, MP3, or cassette player (device should have its own volume control).

11. PHONES

Connect stereo headphones here (speaker output is canceled when headphones are connected).

SPECIFICATIONS

Output Power:

15 watts RMS

Frequency Range:

75 Hz ~ 10 kHz

Speaker:

8" / 20W / 4 ohms

Input Sensitivity:

26 mV

Power Supply:

See back of amp

Dimensions: (LxWxH)

14" x 13" x 8"

Weight:

13 lbs.

SPECIFICATIONS SUBJECT TO CHANGE WITHOUT NOTICE

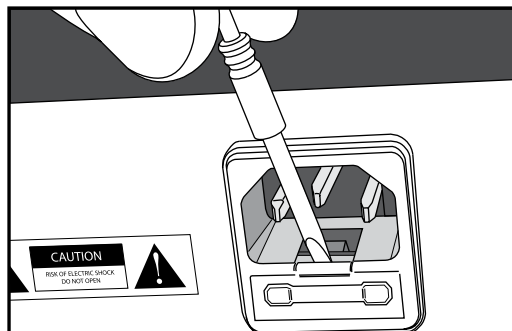
REPLACING THE FUSE

An additional fuse has been enclosed in the fuse compartment of your amplifier, directly below the power input. The fuse compartment contains an active fuse and a replacement. The fuse protects against power surges. If your amplifier does not power up as usual, the fuse may need to be replaced.

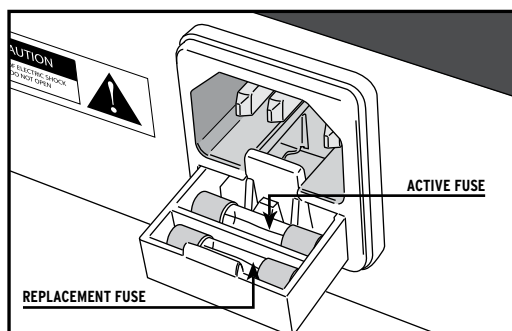
If the fuse fails:

1. Turn the amplifier power off.
2. Unplug the amplifier.
3. Detach the power cord and set aside.
4. Carefully insert a flathead screwdriver to open the fuse compartment. Be careful not to break the fuse inside.
5. Remove the blown fuse from the inner (active) slot.
6. Move the new fuse from the outer slot to the inner slot.
7. Close the fuse compartment.
8. Discard the blown fuse.

Note: If you replace the fuse and the amplifier still does not power up, have the unit checked by a qualified repairperson.



Open the fuse compartment.



Remove the blown fuse from the inner (active) slot. Move the new fuse from the outer slot to the inner slot.

CAUTION REPLACE ONLY WITH SAME TYPE 250V, 1A FUSE. USING ANOTHER TYPE IS A POTENTIAL FIRE HAZARD.

Free Manuals Download Website

<http://myh66.com>

<http://usermanuals.us>

<http://www.somanuals.com>

<http://www.4manuals.cc>

<http://www.manual-lib.com>

<http://www.404manual.com>

<http://www.luxmanual.com>

<http://aubethermostatmanual.com>

Golf course search by state

<http://golfingnear.com>

Email search by domain

<http://emailbydomain.com>

Auto manuals search

<http://auto.somanuals.com>

TV manuals search

<http://tv.somanuals.com>