

Customer Assistance  
 Phone: 888.551.1115  
 Email: info@firstact.com  
 First Act and the First Act logo are trademarks of First Act Inc.  
 US Patent No. D487,627  
 ©2008 First Act Inc.  
 All rights reserved.  
 M2A110.M.06

**M2A-110**  
**AMPLIFIER**  
 INSTRUCTION  
**MANUAL**



**OTHER  
 FIRST ACT®  
 PRODUCTS :**



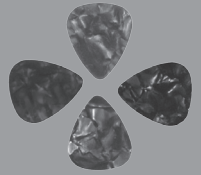
Guitar Case



10 & 20ft Cables



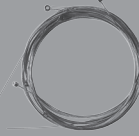
Auto Tuner



Picks



Books



Guitar Strings



Stringwinder



First Act Inc.  
 745 Boylston Street  
 Boston, MA 02116 USA  
 firstact.com

**WARNING: EXCESSIVE SOUND PRESSURE FROM EARPHONES AND HEADPHONES CAN CAUSE HEARING LOSS.**  
**WARNING: TO REDUCE THE RISK OF FIRE OR ELECTRIC SHOCK, DO NOT EXPOSE THIS APPARATUS TO RAIN OR MOISTURE.**  
**MAINS PLUG IS USED AS DISCONNECT DEVICE AND IT SHOULD REMAIN READY TO OPERATE DURING INTENDED USE. IN ORDER TO DISCONNECT THE APPARATUS FROM THE MAINS COMPLETELY, THE MAINS PLUG SHOULD BE DISCONNECTED FROM THE MAINS SOCKET COMPLETELY.**  
**THE APPARATUS SHALL BE CONNECTED TO MAINS SOCKET OUTLET WITH A PROTECTIVE EARTHING CONNECTION.**

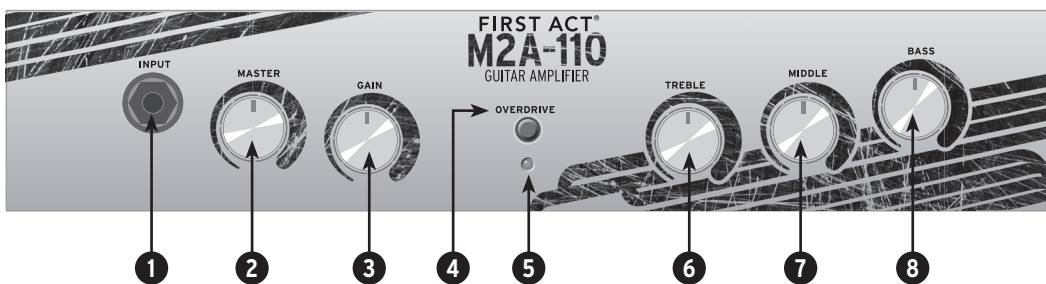
	CAUTION TO REDUCE THE RISK OF ELECTRIC SHOCK, DO NOT REMOVE COVER (OR BACK). NO USER-SERVICEABLE PARTS INSIDE. REFER SERVICING TO QUALIFIED SERVICE PERSONNEL.
	THE LIGHTNING FLASH WITH AN ARROWHEAD SYMBOLS, WITH AN EQUILATERAL TRIANGLE AS INTENDED TO ALERT THE USER TO THE PRESENCE OF UNINSULATED "DANGEROUS VOLTAGE" WITHIN THE PRODUCT'S ENCLOSURE THAT MAY BE OF SUFFICIENT MAGNITUDE TO CONSTITUTE A RISK OF ELECTRIC SHOCK TO PERSONS.
	THE EXPLANATION POINT WITHIN AN EQUILATERAL TRIANGLE IS INTENDED TO ALERT THE USER TO THE PRESENCE OF IMPORTANT OPERATING AND MAINTENANCE (SERVICING) INSTRUCTIONS IN THE LITERATURE ACCOMPANYING THE APPLIANCE.

11. Only use attachments/accessories specified by the manufacturer.
12. Unplug this apparatus during lightning storms or when unused for long periods of time.
13. Refer all servicing to qualified service personnel. Servicing is required when the apparatus has been damaged in any way, such as power-supply cord or plug is damaged, liquid has been spilled on or objects have fallen into the apparatus, the apparatus has been exposed to rain or moisture, does not operate normally, or has been dropped.

1. Read these instructions.
2. Keep these instructions.
3. Heed all warnings.
4. Follow all instructions.
5. The apparatus should not be exposed to dripping or splashing. No objects filled with liquids, such as vases, should be placed on apparatus.
6. Clean only with dry cloth.
7. Do not block any ventilation openings, maintaining a minimum distance of 10cm around the apparatus. Install in accordance with the manufacturer's instructions.
8. Do not install near any heat sources such as radiators, heat registers, stoves, or other apparatus (including amplifiers) that produce heat. No naked flame sources such as lighted candles should be placed on the apparatus.
9. Do not defeat the safety purpose of the polarized or grounding-type plug. A polarized plug has two blades with one wider than the other. A grounding type has two blades and a third grounding prong. The wide blade or the third prong are provided for your safety. If the provided plug does not fit into your outlet, consult an electrician for replacement of the obsolete outlet.
10. Protect the power cord from being walked on or pinched particularly at plugs, convenience receptacles, and the point where they exit from the apparatus.

**IMPORTANT SAFETY INSTRUCTIONS**  
 Please read carefully before operating your amplifier.  
 Follow these basic precautionary measures to ensure a longer life for your amplifier, and to reduce the risk of electric shock.

## FACEPLATE



## BACKPLATE



### 1. INPUT JACK

Connect instrument cable here ( $\frac{1}{4}$  inch jack).

### 2. MASTER VOLUME

Controls the total output level of amplifier.

### 3. GAIN

Controls the input level. Increasing gain adds distortion, or an overdriven rock tone; decreasing gain produces a cleaner sound. Gain knob is functional when *Overdrive* button is engaged.

### 4. OVERDRIVE ON/OFF SWITCH

*ON* selects the Overdrive (distortion) channel, *OFF* selects the Clean channel. The **GAIN** knob interacts with the overdrive button, allowing the user to add the desired amount of distortion.

### 5. LED

Indicates power on/off.

### 6. TREBLE

Adjusts high frequency output.

### 7. MIDDLE

Adjusts middle frequency output.

### 8. BASS

Adjusts low frequency output.

### 9. POWER

On/off switch.

### 10. PHONES

Connects to stereo headphones, which cancels speaker output.

### 11. AUDIO IN

Input jack for external audio device such as CD, MP3, or cassette player (device should have its own volume control).

### 12. POWER INPUT / FUSE COMPARTMENT

Connection for power cable. Use only the power cable supplied with this amplifier. See instructions below for replacing the fuse.

## SPECIFICATIONS

### Output Power:

10 watts RMS

### Frequency Range:

40 Hz ~ 8 kHz

### Speaker:

6.5" / 25W / 8 ohms

### Input Sensitivity:

26 mV

### Power Supply:

Detachable,  
UL-approved  
power cable

### Dimensions: (LxWxH)

12" x 7.4" x 12"

### Weight:

12 lbs.

SPECIFICATIONS SUBJECT TO CHANGE WITHOUT NOTICE

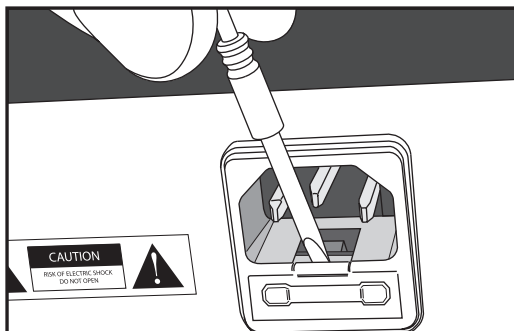
## REPLACING THE FUSE

The fuse compartment contains an active fuse. The fuse protects against power surges. If your amplifier does not power up as usual, this fuse may need to be replaced.

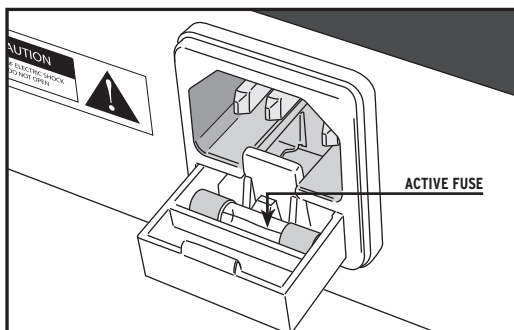
If the fuse fails:

1. Turn the amplifier power off.
2. Unplug the amplifier.
3. Detach the power cord and set aside.
4. Carefully insert a flathead screwdriver to open the fuse compartment. Be careful not to break the fuse inside.
5. Remove the blown fuse from the inner (active) slot.
6. Replace with a 250V, 500mA fuse.
7. Close the fuse compartment.
8. Discard the blown fuse.

Note: If you replace the fuse and the amplifier still does not power up, have the unit checked by a qualified repairperson.



Open the fuse compartment.



Remove the blown fuse from the inner (active) slot.

**CAUTION** REPLACE ONLY WITH SAME TYPE 250V, 500mA FUSE. USING ANOTHER TYPE OF FUSE CAN BE DANGEROUS.

## Free Manuals Download Website

<http://myh66.com>

<http://usermanuals.us>

<http://www.somanuals.com>

<http://www.4manuals.cc>

<http://www.manual-lib.com>

<http://www.404manual.com>

<http://www.luxmanual.com>

<http://aubethermostatmanual.com>

Golf course search by state

<http://golfingnear.com>

Email search by domain

<http://emailbydomain.com>

Auto manuals search

<http://auto.somanuals.com>

TV manuals search

<http://tv.somanuals.com>