



Please keep this instruction sheet for future reference,
as it contains important information.

Requires four "D" batteries for operation (included).
Adult assembly is required for battery replacement.

Tool required for battery replacement:
Phillips screwdriver (not included).



www.fisher-price.com

Lullabye Birdies™ Soother

Before Use

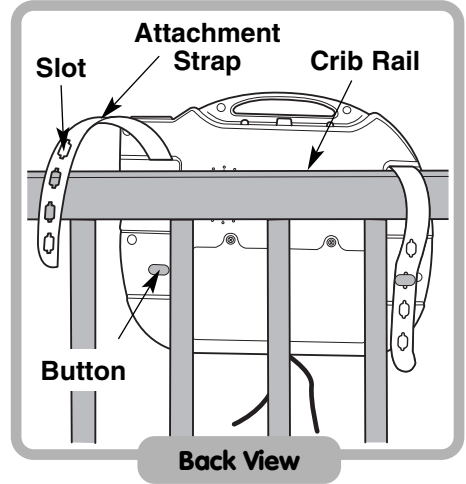
CAUTION

Please keep small parts such as plastic tabs out of children's reach. Throw the plastic tab away.

Note: A plastic tab was attached to the toy for in-store demonstration purposes. While the tab may have already been removed, check the back of the toy to be sure. If the plastic tab is still attached, pull and remove the tab from the toy. Throw the plastic tab away.

Crib Attachment

IMPORTANT! Always use the straps provided to attach this toy to a crib.

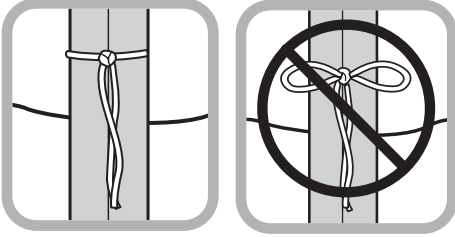


Note: If you are attaching this toy to a crib side rail that can be lowered and raised, make sure the crib side rail is in the raised (locked) position.

- Position the toy inside the crib.
- Wrap one of the toy's attachment straps around the crib rail.
- Fasten the attachment strap slot to the button on the back of the toy.
- Repeat this procedure to secure the other attachment strap.

Note: This toy should be snug against the crib rail and spindles. Use the strap slot that provides the tightest fit.

Crib Attachment

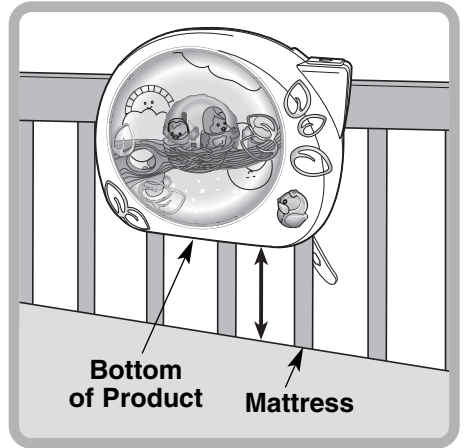


- Tie the toy's strings to a crib spindle.

Note: It is better to tie the strings in a knot than a bow, since a bow may be easily untied.

WARNING

To prevent entrapment of baby's head, keep distance between the bottom of the product and the crib mattress to at least 7 inches.

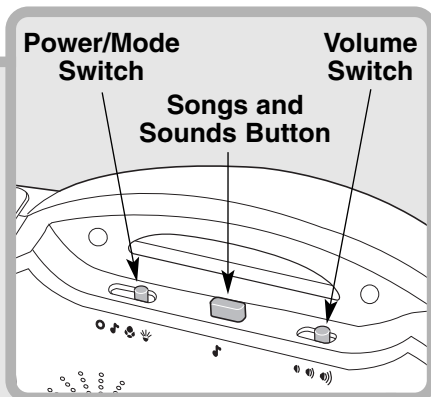
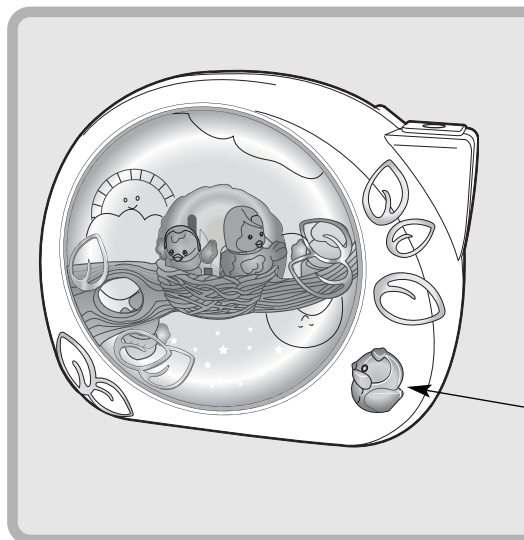


- Make sure the distance between the bottom of the product and the crib mattress is **at least 7 inches**.
- If the distance is less than 7 inches: readjust the attachment straps to lift the product; or lower the crib mattress.

IMPORTANT! If this toy is attached to a crib side rail that can be lowered and raised, make sure it is in the raised (locked) position whenever a child is in the crib.



Soothing Sights and Sounds



Press to activate sounds and lights. Press again to stop.

Power/Mode Switch

- Slide the switch to the off position when the toy is not in use.
- 🎵 Listen to about 10 minutes of music only.
- 🌿 Enjoy music, soft lights and fluttering birdies.
- ☀️ Slide to this position for music, soft lights and fluttering birdies plus a special projector shines a light show on the ceiling.

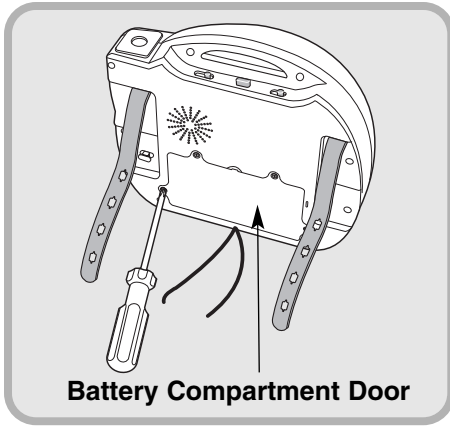
Songs and Sounds Button

- 🎵 Press to choose from four different songs or two selections of nature sounds.

Volume Switch

- 🔊 Slide to either low, medium or high volume.

Battery Replacement



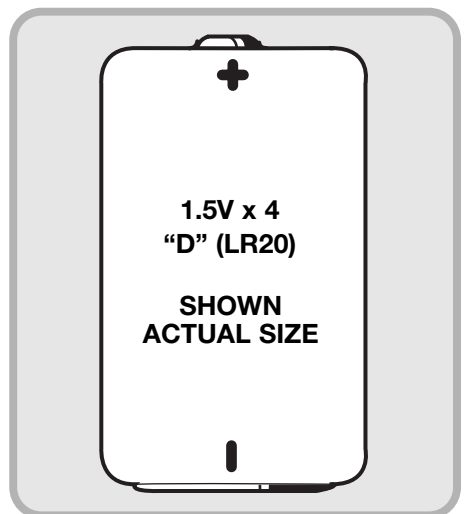
For best results, we recommend replacing the batteries that came with this toy with four, new “D” (LR20) alkaline batteries.

- Loosen the screws in the battery compartment door with a Phillips screwdriver. Remove the battery compartment door.
 - Insert four “D” (LR20) **alkaline** batteries.
- Hint:** We recommend using **alkaline** batteries for longer battery life.
- Replace the battery compartment door and tighten the screws with a Phillips screwdriver. Do not over-tighten.
 - If sounds, lights or motions from this toy become faint or stop, it’s time for an adult to change the batteries.

Battery Safety Information

Batteries may leak fluids that can cause a chemical burn injury or ruin your toy. To avoid battery leakage:

- Do not mix old and new batteries or batteries of different types: alkaline, standard (carbon-zinc) or rechargeable (nickel-cadmium).
- Insert batteries as indicated inside the battery compartment.
- Remove batteries during long periods of non-use. Always remove exhausted batteries from the toy. Dispose of batteries safely. Do not dispose of batteries in a fire. The batteries may explode or leak.
- Never short-circuit the battery terminals.
- Use only batteries of the same or equivalent type, as recommended.
- Do not charge non-rechargeable batteries.
- Remove rechargeable batteries from the toy before charging.
- If removable, rechargeable batteries are used, they are only to be charged under adult supervision.



FCC Note (United States Only)

Note: This equipment has been tested and found to comply with the limits for a Class B digital device, pursuant to Part 15 of the FCC Rules. These limits are designed to provide reasonable protection against harmful interference in a residential installation. This equipment generates, uses and can radiate radio frequency energy and, if not installed and used in accordance with the instructions, may cause harmful interference to radio communications. However, there is no guarantee that interference will not occur in a particular installation. If this equipment does cause harmful interference to radio or television reception, which can be determined by turning the equipment off and on, the user is encouraged to try to correct the interference by one or more of the following measures:

- Reorient or relocate the receiving antenna.
- Increase the separation between the equipment and receiver.
- Consult the dealer or an experienced radio/TV technician for help.

Note: Changes or modifications not expressly approved by the manufacturer responsible for compliance could void the user's authority to operate the equipment.

For countries outside the United States:

CANADA: Questions? 1-800-567-7724. Mattel Canada Inc., 6155 Freemont Blvd., Mississauga, Ontario L5R 3W2.

GREAT BRITAIN: [Mattel UK Ltd, Vanwall Business Park, Maidenhead SL6 4UB. Helpline: 01628 500302.](#)

AUSTRALIA: Mattel Australia Pty. Ltd., 658 Church Street, Locked Bag #870, Richmond, Victoria 3121 Australia. Consumer Advisory Service 1300 135 312.

NEW ZEALAND: 16-18 William Pickering Drive, Albany 1331, Auckland.

ASIA: Mattel East Asia Ltd, Room 1106, South Tower, World Finance Centre, Harbour City, Tsimshatsui, HK, China.

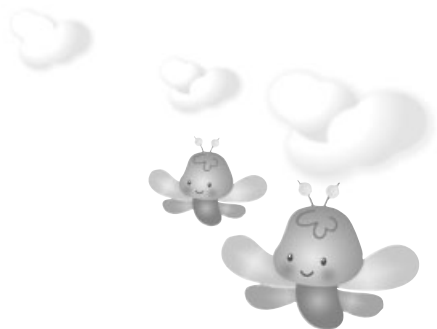
Care

- To clean, wipe the surface of this toy with a damp cloth. Do not immerse this toy.
- Do not drop this toy on a hard surface.
- This toy has no consumer serviceable parts. Please do not take this toy apart.

Consumer Information

Questions? We'd like to hear from you!

Call Fisher-Price® Consumer Relations, toll-free at **1-800-432-KIDS (5437)**, 8 AM - 6 PM EST Monday through Friday. Hearing-impaired consumers using TTY/TDD equipment, please call 1-800-382-7470. Or, write to:
Fisher-Price®
Consumer Relations
636 Girard Avenue
East Aurora
New York 14052



Free Manuals Download Website

<http://myh66.com>

<http://usermanuals.us>

<http://www.somanuals.com>

<http://www.4manuals.cc>

<http://www.manual-lib.com>

<http://www.404manual.com>

<http://www.luxmanual.com>

<http://aubethermostatmanual.com>

Golf course search by state

<http://golfingnear.com>

Email search by domain

<http://emailbydomain.com>

Auto manuals search

<http://auto.somanuals.com>

TV manuals search

<http://tv.somanuals.com>