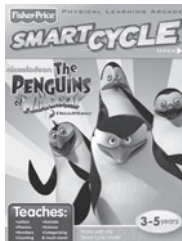


Stretch your mind with other software titles for your Smart Cycle®!

Each sold separately and subject to availability.



© 2010 Viacom International Inc. All Rights Reserved. Nickelodeon, SpongeBob SquarePants and all related titles, logos and characters are trademarks of Viacom International Inc. Created by Stephen Hillenburg.

© 2010 Viacom International Inc. Madagascar® DWA L.L.C. All Rights Reserved.

Disney • Pixar elements © 2010 Disney • Pixar

Shrek Forever After™ & © 2010 DreamWorks Animation L.L.C.

Fisher-Price, Inc., a subsidiary of Mattel, Inc., East Aurora, NY 14052 U.S.A. ©2010 Mattel, Inc. All Rights Reserved. ®and™ designate U.S. trademarks of Mattel, Inc., unless otherwise indicated.

www.fisher-price.com

PRINTED IN CHINA

Download from Www.SoftmanuallS.com. T6347-0990. All Manuals Search And Download.

T6347

Fisher-Price®

SMART CYCLE® RACER

PHYSICAL LEARNING ARCADE SYSTEM

DC SUPER FRIENDS



NOTICE ABOUT EPILEPSY AND SEIZURES

PLEASE READ THIS NOTICE BEFORE YOU OR YOUR CHILD USE ANY VIDEO GAME.

A very small portion of the population have a condition which may cause a momentary loss of consciousness when viewing certain kinds of flashing lights or patterns that are commonly present in our daily environment. This condition may cause seizures while watching some kinds of television pictures or playing certain video games. Players who have not had any previous seizures may nonetheless have an undetected epileptic condition. If you or anyone in your family has experienced symptoms linked to an epileptic condition (e.g. a seizure or loss of awareness), consult your physician before playing video games. We recommend that parents observe their children while they play video games. If you or your child experience any of the following symptoms such as dizziness, altered vision, eye or muscle twitching, involuntary movements, loss of awareness, disorientation or convulsions, **DISCONTINUE USE IMMEDIATELY** and consult your physician.

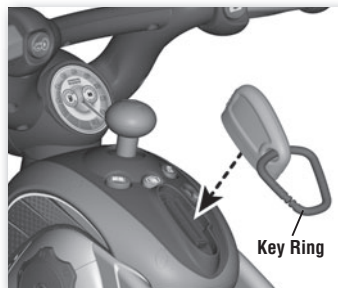
Additionally, please follow these precautions whenever playing a video game:

- Do not sit or stand too close to the television screen. Play as far back from the screen as possible.
- Do not play if you are tired or need sleep.
- Always play in a well lit room.
- Be sure to take a 10-15 minute break every hour while playing.

CONSUMER INFORMATION

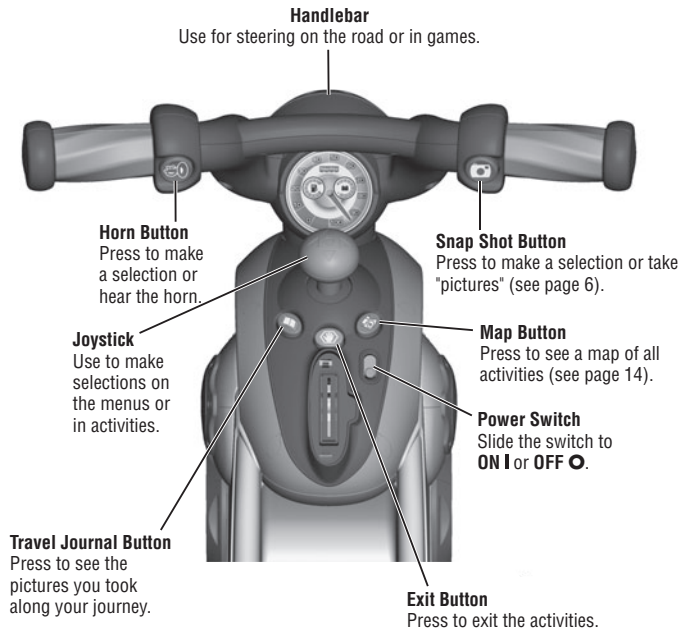
- Please keep these instructions for future reference, as they contain important information.

GETTING STARTED



- Insert the game cartridge into the socket on top of the cycle. Push to be sure it's fully inserted.
 - Turn your TV or DVD/VCR power **ON**.
 - Slide the power switch on the cycle to **ON I**.
 - To find the picture on your TV screen, set your TV's or DVD/VCR's mode selector to INPUT or VIDEO IN.
- Note:** You can use this Smart Cycle® software with any Smart Cycle® model.

CYCLE CONTROLS



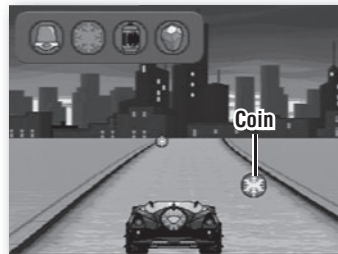
CHOOSE A RIDE



Customize your vehicle!

- Use the joystick to scroll through vehicle choices. Press a red handlebar button to make your selection.
- Repeat this process to choose a color and horn sound for your vehicle.

BACK TO THE ROAD




Collect the coins.

- Pedal the cycle to move down the road. *The faster you pedal the faster you go!* Use the handlebar to steer.
- Collect the coins shown on the top of the screen. Simply drive into them.
- Watch to see what villain goes with the coins!



Taking snap shots.

- Press the right handlebar button  to take snap shots (only in this activity).

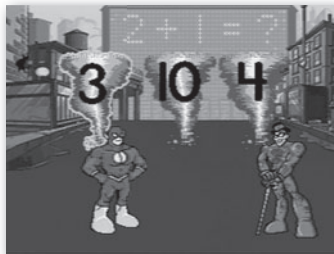


Off ramps

- Keep traveling down the road or head onto an off-ramp for other fun games and activities. Simply bear to the side of the road as you see one approaching.

Hint: If you miss your ramp, you can pedal in reverse to back up.


TORNADO STOP



Help stop the tornadoes!

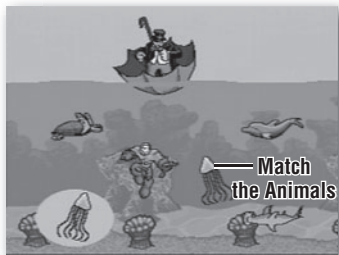
- Listen to the math problem.
- Use the joystick to scroll through answer choices. Press a red handlebar button to select your answer.




- Then, pedal the cycle to help **The Flash** stop the tornado.
- When you're finished with this activity, press the exit button  to return to the road. Pedal to the next activity.



OCEAN RESCUE



Help rescue the animals!

- Use the joystick to move **Aquaman** in the water.
- Watch out for the Penguin's nets!
- Press a red handlebar button to untangle the nets. You can also help the trapped animals from the nets.
- After you rescue the animal, use the joystick to find the matching animal. Press a red handlebar button to make your selection.
- When you're finished with this activity, press the exit button  to return to the road. Pedal to the next activity.



THE BIG RACE



Pedal as fast as you can to the finish line!

- Use the joystick to choose a *1 Player* or *2 Player* game. Press a red handlebar button to select the game.

1 Player


- Pedal down the road as fast as you can to the finish line. Try to speed past the other characters. Get to the finish line first and *you win!*
- Hint:** Drive over the arrows along the way for a speed boost!

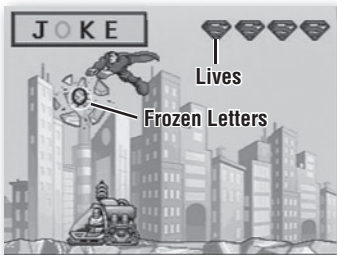


LETTER FREEZE




2 Player

- Each player takes a turn. Pedal down the road as fast as you can to the finish line. Look at your time.
- Now it's time for *Player 2* to beat your time.
- The player with the fastest time wins.
- When you're finished with this activity, press the exit button  to return to the road. Pedal to the next activity.

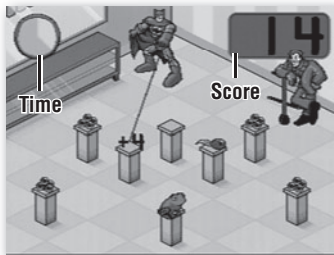


Help Superman snag ice cubes and spell words!

- Spell the word at the top of the screen.
- Use the joystick to move **Superman**.
- Press a red handlebar button to snag the correct letter ice cube and spell the word.
- Don't catch the wrong letter or you will lose a life.
- Spell bigger words in upper or lower letters in each level!
- When you're finished with this activity, press the exit button  to return to the road. Pedal to the next activity.




MORPH CATCH



Catch the creatures before they grow up and escape!

- Press a red handlebar button to catch a creature. Hurry, catch the creature before it grows up!

- Collect points for each creature you catch. Look at your score to see how many points you collected!
- Catch as many creatures as you can before time runs out!
- When you're finished with this activity, press the exit button  to return to the road. Pedal to the next activity.




BONUS ACTIVITY



Solve the puzzle!

- Use the joystick to choose a puzzle piece. Press a red handlebar button to select it.



- Then, use the joystick to move the puzzle piece to the board in the center of the screen. Press a red handlebar button to release the puzzle piece.
- Repeat this procedure to complete the puzzle!
- When you're finished with this activity, press the exit button  to return to the road. Pedal to the next activity.




TRAVEL JOURNAL





See previous
snapshot

See next
snapshot

- Press the travel journal button . Then use the joystick and handlebar buttons to review and select a snapshot.

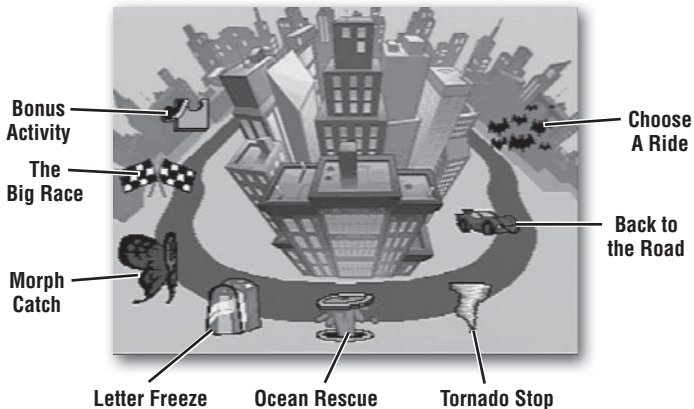



Stamp Tool Erase

- Next, use the joystick and handlebar buttons to select the stamp tool  to decorate your picture.
- Choose a stamp with the joystick and handlebar buttons and place it on the snapshot.
- Select the erase button  to clear the screen and decorate another picture.



THE MAP



- You can travel down the road and head onto an off-ramp to access activities or simply press the map button  to visit any of the activities around the course.

CONSUMER INFORMATION



CONSUMER ASSISTANCE

1-800-432-5437 (US & Canada)
1300 135 312 (Australia)

service.fisher-price.com

Fisher-Price, Inc., 636 Girard Avenue, East Aurora, NY 14052.
Hearing-impaired consumers: 1-800-382-7470.

Outside the United States:

Canada: Mattel Canada Inc., 6155 Freemont Blvd.,
Mississauga, Ontario L5R 3W2; www.service.mattel.com.

Great Britain: Mattel UK Ltd, Vanwall Business Park,
Maidenhead SL6 4UB. Helpline: 01628 500303.
www.service.mattel.com/uk

Mattel Europa, B.V., Gondel 1, 1186 MJ Amstelveen, Nederland.

Australia: Mattel Australia Pty. Ltd., 658 Church Street,
Locked Bag #870, Richmond, Victoria 3121 Australia.

New Zealand: 16-18 William Pickering Drive,
Albany 1331, Auckland.

- Wipe with a clean cloth dampened with a mild soap and water solution. Do not immerse.
- This product has no consumer serviceable parts. Do not take this product apart.



Protect the environment by not disposing of this product with household waste (2002/96/EC). Check your local authority for recycling advice and facilities (Europe only).

Free Manuals Download Website

<http://myh66.com>

<http://usermanuals.us>

<http://www.somanuals.com>

<http://www.4manuals.cc>

<http://www.manual-lib.com>

<http://www.404manual.com>

<http://www.luxmanual.com>

<http://aubethermostatmanual.com>

Golf course search by state

<http://golfingnear.com>

Email search by domain

<http://emailbydomain.com>

Auto manuals search

<http://auto.somanuals.com>

TV manuals search

<http://tv.somanuals.com>