

Fisher-Price®

Y3635



Please keep this instruction sheet for future reference,
as it contains important information.

Requires four "AA" (LR6) **alkaline** batteries (not included) for operation.

Adult assembly is required.

Tool required for assembly: Phillips screwdriver (not included).



CAUTION

This package contains small parts. For adult assembly only.

fisher-price.com

Download from [Www.Somanuals.com](http://www.Somanuals.com). All Manuals Search And Download.



CONSUMER ASSISTANCE

1-800-432-5437 (US & Canada)
1300 135 312 (Australia)

 service.fisher-price.com

Fisher-Price, Inc., 636 Girard Avenue, East Aurora, NY 14052.
Hearing-impaired consumers: 1-800-382-7470.

Outside the United States:

Canada: Mattel Canada Inc., 6155 Freemont Blvd.,
Mississauga, Ontario L5R 3W2; www.service.mattel.com.

Great Britain: Mattel UK Ltd, Vanwall Business Park,
Maidenhead SL6 4UB. Helpline: 01628 500303.
www.service.mattel.com/uk

Mattel Europa B.V., Gondel 1, 1186 MJ Amstelveen, Nederland.

Australia: Mattel Australia Pty. Ltd., 658 Church Street,
Locked Bag #870, Richmond, Victoria 3121 Australia.

New Zealand: 16-18 William Pickering Drive,
Albany 1331, Auckland.

FCC Statement (United States Only)

This equipment has been tested and found to comply with the limits for a Class B digital device, pursuant to Part 15 of the FCC Rules. These limits are designed to provide reasonable protection against harmful interference in a residential installation. This equipment generates, uses and can radiate radio frequency energy and, if not installed and used in accordance with the instructions, may cause harmful interference to radio communications. However, there is no guarantee that interference will not occur in a particular installation. If this equipment does cause harmful interference to radio or television reception, which can be determined by turning the equipment off and on, the user is encouraged to try to correct the interference by one or more of the following measures:

- Reorient or relocate the receiving antenna.
- Increase the separation between the equipment and receiver.
- Consult the dealer or an experienced radio/TV technician for help.

Note: Changes or modifications not expressly approved by the manufacturer responsible for compliance could void the user's authority to operate the equipment.

This device complies with Part 15 of the FCC Rules.

Operation is subject to the following two conditions: (1) this device may not cause harmful interference and (2) this device must accept any interference received, including interference that may cause undesired operation.

Consumer Information



WARNING

Prevent Entanglement Injury

- Keep out of baby's reach.
- Remove mobile from crib or playpen when baby begins to push up on hands and knees.
- This product may not attach to all crib designs. Do not add additional strings or straps to attach to crib or playpen.
- Use ONLY attached to a crib or playpen.

IMPORTANT! Always attach with all provided fasteners tightly to a crib or playpen according to the instructions. Do not add additional strings or straps to attach to a crib. Check frequently.

- This product may be used from birth until 5 months.
- A crib mobile is intended for visual stimulation and is not to be grasped by a child.
- Wipe this toy with a clean cloth dampened with a mild soap and water solution. Do not immerse this toy. The soft toys are surface washable.
- This toy has no consumer serviceable parts. Do not take this toy apart.

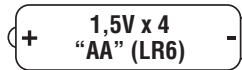
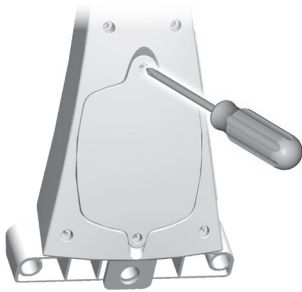
ICES-003

This Class B digital apparatus complies with Canadian ICES-003. Operation is subject to the following two conditions: (1) this device may not cause harmful interference and (2) this device must accept any interference received, including interference that may cause undesired operation.

NMB-003

Cet appareil numérique de la classe B est conforme à la norme NMB-003 du Canada. L'utilisation de ce dispositif est autorisée seulement aux conditions suivantes: (1) il ne doit pas produire de brouillage et (2) l'utilisateur du dispositif doit être prêt à accepter tout brouillage radioélectrique reçu, même si ce brouillage est susceptible de compromettre le fonctionnement du dispositif.

Battery Installation



*We recommend using **alkaline** batteries for longer battery life.*

- Loosen the screws in the battery compartment door with a Phillips screwdriver and remove the door.
- Insert four "AA" (LR6) **alkaline** batteries.
- Replace the battery compartment door and tighten the screws.
- If this product begins to operate erratically, you may need to reset the electronics. Slide the power/volume switch on the mobile base off and then back on.
- When sounds or lights become faint or stop, it's time for an adult to change the batteries.
- Protect the environment by not disposing of this product with household waste (2002/96/EC). Check your local authority for recycling advice and facilities.

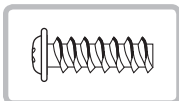
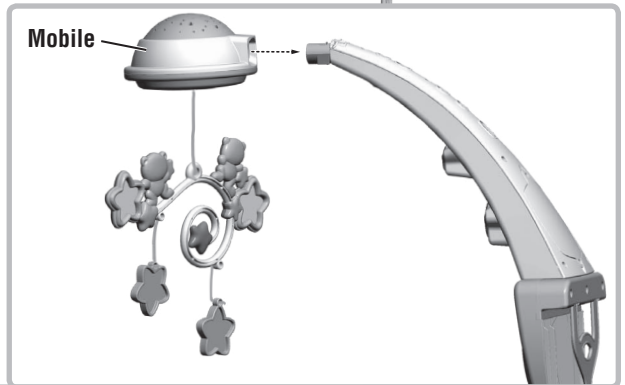
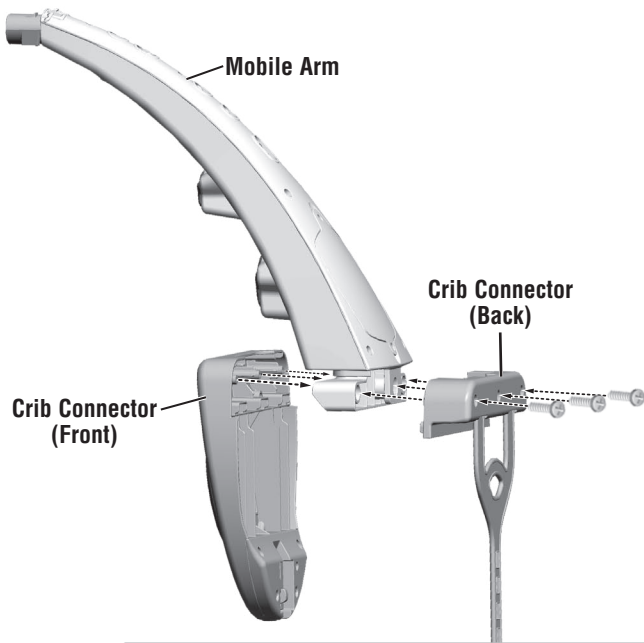


Battery Safety Information

In exceptional circumstances, batteries may leak fluids that can cause a chemical burn injury or ruin your product. To avoid battery leakage:

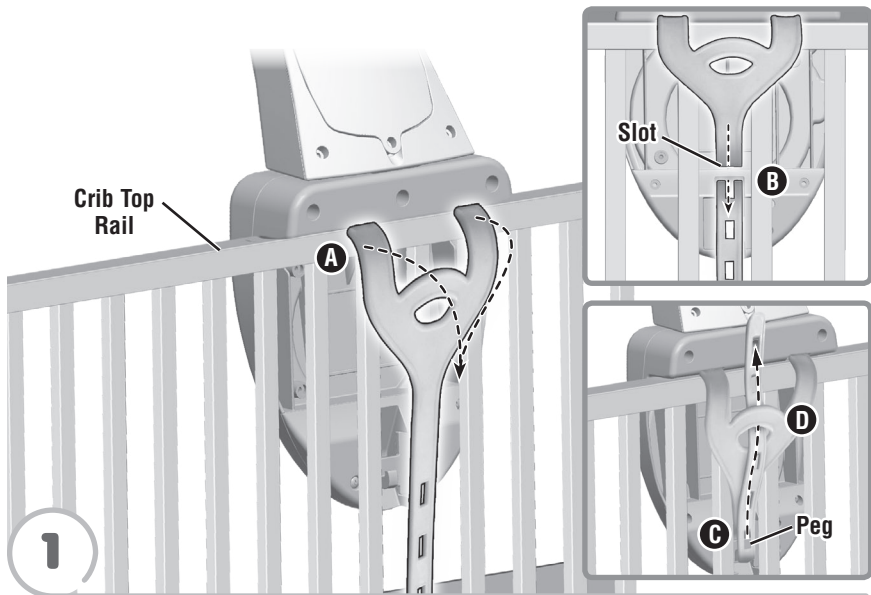
- Do not mix old and new batteries or batteries of different types: alkaline, standard (carbon-zinc) or rechargeable (nickel-cadmium).
- Insert batteries as indicated inside the battery compartment.
- Remove batteries during long periods of non-use. Always remove exhausted batteries from the product. Dispose of batteries safely. Do not dispose of product in a fire. The batteries inside may explode or leak.
- Never short-circuit the battery terminals.
- Use only batteries of the same or equivalent type, as recommended.
- Do not charge non-rechargeable batteries.
- Remove rechargeable batteries from the product before charging.
- If removable, rechargeable batteries are used, they are only to be charged under adult supervision.

Assembly



- Fit the front half and the back half of the crib connector to the mobile arm.
- Insert three 3,5 mm x 14 mm washer head screws into the back of the crib connector and tighten with a Phillips screwdriver. Do not over-tighten.
- Fit the mobile onto the end of the mobile arm. Push to **"snap"** in place. Pull on the mobile to be sure it is secure to the mobile arm.

Crib Attachment

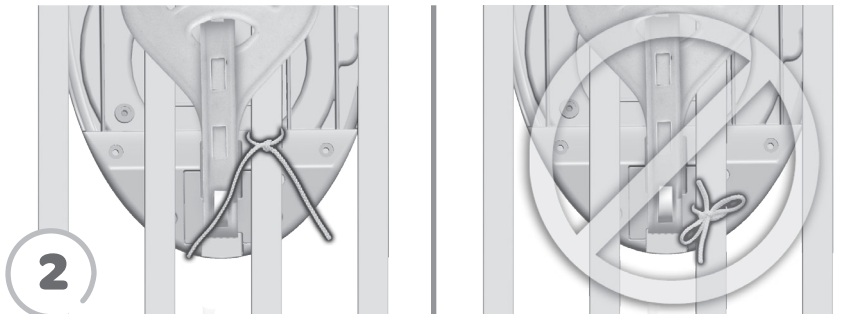


- Fit the toy to crib top rail, facing the inside of the crib. Make sure the attachment strap is on the outside of the crib **A**.
- Slide the end of the attachment strap down through the slot on the back of the toy **B**. Pull the end of the attachment strap up and fasten to the slot on the peg on the back of the toy **C**.

Note: This toy should be snug against the crib rail and spindles. Use the strap slot that provides the tightest fit.

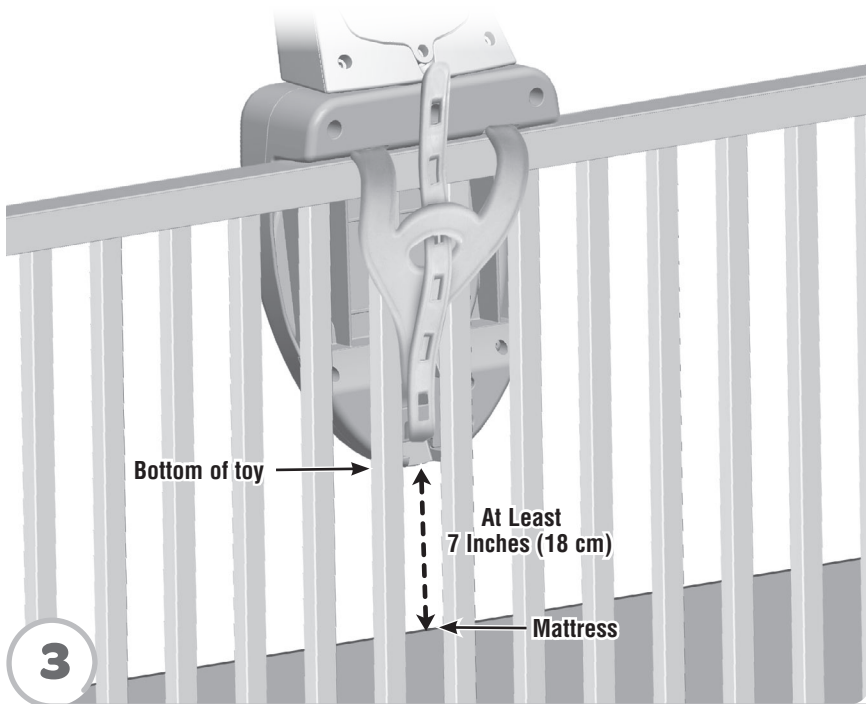
- If you have excess strap, slide the free end of the attachment strap through the opening near the top of the attachment strap **D**.

Crib Attachment



- Tie the toy strings to a crib spindle.

Note: It is better to tie the strings in a knot than a bow, since a bow may be easily untied.



- If the distance between the bottom of the toy and the mattress is less than 7 Inches (18 cm), lower the crib mattress.

Music, Lights, Motion!

Start/Stop Button

Press the button to start the music/sounds. Press the button again to advance to the next song. Press and hold the button to stop the music/sounds.

Power/Volume Switch

▶ ON with low volume
▶▶ ON with high volume
○ OFF

Sound Select Switch

🌿 Nature Sounds
🎵 Music

Projector Switch

💡 Projector Only
💡 Projector and Lights

Mode Switch

🎵↻ Music & Motion
🎵 Music Only
🎵💡 Music & Lights
🎵↻💡 Music, Lights & Motion

Hint: The music/sounds will play for approximately 30 minutes. Lights and/or motion turn off after approximately 10 minutes. Press the start/stop button to restart the lights/motion. The music/sounds will slowly fade during the last 10 minutes of use.

Free Manuals Download Website

<http://myh66.com>

<http://usermanuals.us>

<http://www.somanuals.com>

<http://www.4manuals.cc>

<http://www.manual-lib.com>

<http://www.404manual.com>

<http://www.luxmanual.com>

<http://aubethermostatmanual.com>

Golf course search by state

<http://golfingnear.com>

Email search by domain

<http://emailbydomain.com>

Auto manuals search

<http://auto.somanuals.com>

TV manuals search

<http://tv.somanuals.com>