

Fisher-Price®

P8895

# SMART CYCLE<sup>®</sup> Extreme

PHYSICAL LEARNING ARCADE SYSTEM

PLANET  
HEROES<sup>™</sup>



## NOTICE ABOUT EPILEPSY AND SEIZURES

### **PLEASE READ THIS NOTICE BEFORE YOU OR YOUR CHILD USE ANY VIDEO GAME.**

A very small portion of the population have a condition which may cause a momentary loss of consciousness when viewing certain kinds of flashing lights or patterns that are commonly present in our daily environment. This condition may cause seizures while watching some kinds of television pictures or playing certain video games. Players who have not had any previous seizures may nonetheless have an undetected epileptic condition.

If you or anyone in your family has experienced symptoms linked to an epileptic condition (e.g. a seizure or loss of awareness), consult your physician before playing video games. We recommend that parents observe their children while they play video games. If you or your child experience any of the following symptoms such as dizziness, altered vision, eye or muscle twitching, involuntary movements, loss of awareness, disorientation or convulsions, **DISCONTINUE USE IMMEDIATELY** and consult your physician.

Additionally, please follow these precautions whenever playing a video game:

- Do not sit or stand too close to the television screen. Play as far back from the screen as possible.
- Do not play if you are tired or need sleep.
- Always play in a well lit room.
- Be sure to take a 10-15 minute break every hour while playing.

## CONSUMER INFORMATION

- Please keep these instructions for future reference, as they contain important information.

## GETTING STARTED



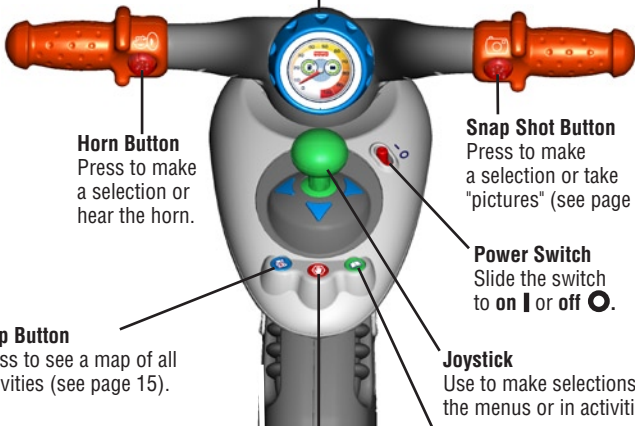
- Insert the game cartridge into the socket in the side of the cycle. Push to be sure it's fully inserted.
- Turn your TV or VCR power **on**.
- Slide the power switch on the cycle to **on I**.
- To find the picture on your TV screen, set your TV's or VCR's mode selector to INPUT or VIDEO IN.

**Note:** You can use this Smart Cycle<sup>®</sup> software with any Smart Cycle<sup>®</sup> model. The Rumble Action feature is only available with the Smart Cycle<sup>®</sup> Extreme model.

## CYCLE CONTROLS

### Handlebar

Use for steering on the galactic path or in games.



### Horn Button

Press to make a selection or hear the horn.

### Snap Shot Button

Press to make a selection or take "pictures" (see page 7).

### Power Switch

Slide the switch to **on** | or **off** ○.

### Map Button

Press to see a map of all activities (see page 15).

### Joystick

Use to make selections on the menus or in activities.

### Exit Button

Press to exit the activities.

### Travel Journal Button

Press to see the pictures you took along your journey.



## CHOOSE A RIDE



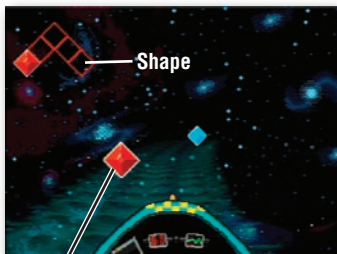
### *Customize your vehicle!*

- Use the joystick to scroll through vehicle choices. Press either handlebar button to make your selection.
- Repeat this process to choose the color and horn for your vehicle.

- Use the joystick to choose to turn the rumble feature on or off.
- Press either handlebar button to make your selection.



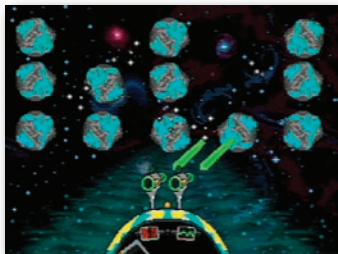
## LET'S BLAST OFF



### Crystal

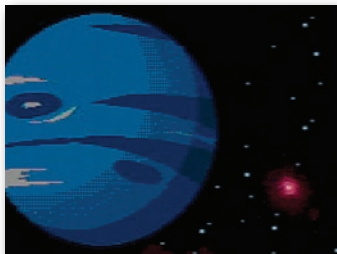
#### ***Find the objects.***

- Pedal the cycle to travel through outer space. *The faster you pedal the faster you go!* Use the handlebar to steer.
- Collect crystals by riding into them to complete the shape shown in the upper left corner of the screen. Don't bump into the other objects.



### ***Mini Game***

- Keep traveling around the solar system, you could unlock a mini-game!
- Use the handlebars to steer and press a red handlebar button to blast the asteroids.



### ***Taking snap shots.***

- Press the right handlebar button  to take snap shots in this (Let's Blast Off) activity.



### ***Off ramps***

- Keep traveling through outer space or head onto an off-ramp for other fun games and activities. Simply bear to the side of the galactic path as you see one approaching.

***Hint:*** If you miss your ramp, you can pedal in reverse to back up.




## SOLAR QUARTERS MISSION



### ***Send the Turbo Shuttle to the planet in trouble!***

- Listen to clues from Ace to find out what planet is in trouble.
- Use the joystick to scroll through the planets. Press a red handlebar button to select a planet.



- Then, pedal the cycle to go to the planet!
- When you're finished with this activity, press the exit button  to return to the galactic path. Pedal to the next activity.



## LOLA THE COW



### Help Lola catch space quarks.

- Use the joystick to move Lola from side to side. Then, press a red handlebar button to make Lola jump and catch a space quark.
- Catch as many space quarks as you can before time runs out.

**Level 1** - Catch the space quarks with the letter that matches the letter shown on the bottom of the screen.

**Level 2** - Catch the space quark with the upper case letter that matches the lower case letter on the bottom of the screen.

**Level 3** - Catch the space quark with the letter that completes the letter sequence on the bottom of the screen.


- When you're finished with this activity, press the exit button  to return to the galactic path. Pedal to the next activity.

## TURBO SHUTTLE TRAINING



Lives

### Collect letters to spell a word!

- Use the joystick to move the space ship, catch falling letters and spell the name of the planet.
- Don't hit an asteroid or you will lose a life.
- There are more obstacles to avoid when you go to a higher level.
- When you're finished with this activity, press the exit button  to return to the galactic path. Pedal to the next activity.




## MARS BLASTER



Lives

Object

### *Help Digger collect space junk!*

- Use the joystick to move Digger on the screen. Point Digger towards the matching object shown at the bottom of the screen and press a red handlebar button.
- Don't choose the wrong object or you will lose a life.
- The space junk gets harder to catch as you advance levels!
- When you're finished with this activity, press the exit button  to return to the galactic path. Pedal to the next activity.



## THE BIG RACE



### *Pedal as fast as you can to the finish line!*

- Use the joystick to choose 1 Player or 2 Player game. Press either handlebar button to select the game.



### 1 Player


Star

- Pedal down the galactic path as fast as you can to the finish line. Try to speed past the other characters. Get to the finish line first and *you win!*

**Hint:** Collect stars along the way for a speed boost!

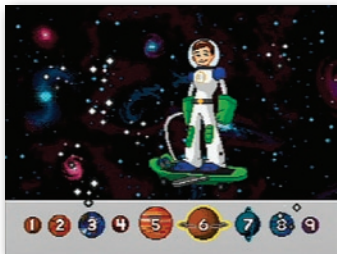


### 2 Player

- Each player takes a turn. Pedal down the galactic path as fast as you can to the finish line. Look at your time.
- Now it's time for *Player 2* to beat your time.
- The player with the fastest time wins.
- When you're finished with this activity, press the exit button  to return to the galactic path. Pedal to the next activity.




## ACE IN SPACE



### ***See how far Ace can jump.***

- Use the joystick to choose a planet at the bottom of the screen. Press a red handlebar button to select it.



- Pedal as fast as you can to build speed, and to see how far Ace can jump.
- Look at the bottom of the screen to see how many planets Ace jumped past.
- When you're finished with this activity, press the exit button  to return to the galactic path. Pedal to the next activity.




## BONUS ACTIVITY



### *A skateboard race!*

- Complete all the activities and unlock a bonus activity.
- Use the joystick to choose a skateboarder. Press a red handlebar button to select it.



- Race the other skateboarder.
- Use the joystick to move down the road and around objects. Pedal the cycle to go even faster.
- When you're finished with this activity, press the exit button  to return to the galactic path. Pedal to the next activity.




## TRAVEL JOURNAL





See previous  
snap shot

See next  
snap shot

- Press the travel journal button . Then use the joystick and handlebar buttons to review and select a snap shot.

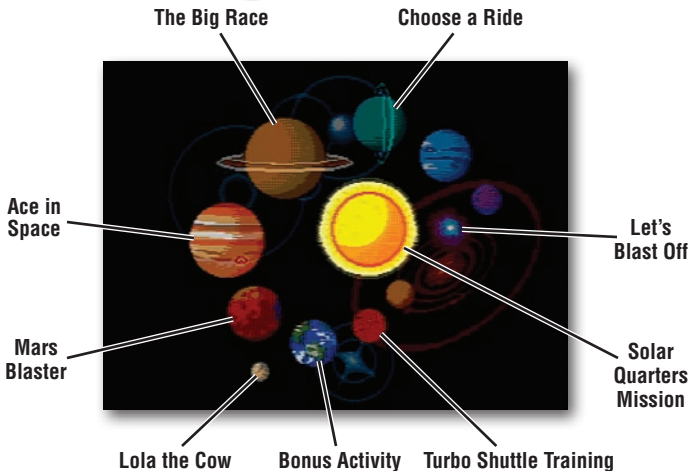


Stamp Tool Erase

- Next, use the joystick and handlebar buttons to select the stamp tool  to decorate your picture.
- Choose a stamp with the joystick and handlebar buttons and place it on the snap shot.
- Select the erase button  to clear the screen and decorate another picture.



## THE MAP



- You can travel down the galactic path and head onto an off-ramp to access activities or simply press the map button  to visit any of the activities around the course.

## CARE

- Wipe with a clean cloth dampened with a mild soap and water solution. Do not immerse.
- This product has no consumer serviceable parts. Do not take this product apart.





Protect the environment by not disposing of this product with household waste (2002/96/EC). Check your local authority for recycling advice and facilities (Europe only).

## CONSUMER INFORMATION

VISIT US ON LINE AT

[WWW.SERVICE.FISHER-PRICE.COM](http://WWW.SERVICE.FISHER-PRICE.COM)

Call our Consumer Relations Department, toll-free at **1-800-432-5437**, 9 AM - 7 PM EST Monday through Friday and 11 AM - 5 PM EST Saturday. Hearing-impaired consumers using TTY/TDD equipment, please call 1-800-382-7470. Write to us at: Fisher-Price® Consumer Relations, 636 Girard Avenue, East Aurora, New York 14052.

### **For countries outside the United States:**

**CANADA:** Questions? 1-800-432-5437. Mattel Canada Inc., 6155 Freemont Blvd., Mississauga, Ontario L5R 3W2; [www.service.mattel.com](http://www.service.mattel.com).

**AUSTRALIA:** Mattel Australia Pty. Ltd., 658 Church Street, Locked Bag #870, Richmond, Victoria 3121 Australia. Consumer Advisory Service 1300 135 312.

**NEW ZEALAND:** 16-18 William Pickering Drive, Albany 1331, Auckland.

**ASIA:** Mattel East Asia Ltd, Room 1106, South Tower, World Finance Centre, Harbour City, Tsimshatsui, HK, China.

**GREAT BRITAIN:** Mattel UK Ltd, Vanwall Business Park, Maidenhead SL6 4UB.  
Helpline: 01628 500303. [www.service.mattel.com/uk](http://www.service.mattel.com/uk)

Fisher-Price, Inc., a subsidiary of Mattel, Inc., East Aurora, NY 14052 U.S.A.  
©2009 Mattel, Inc. All Rights Reserved. ® and ™ designate U.S. trademarks of Mattel, Inc.,  
unless otherwise indicated.

# Stretch your mind with other software titles for your Smart Cycle®!

Each sold separately and subject to availability.



© 2009 Viacom International Inc. All Rights Reserved. Nickelodeon, SpongeBob SquarePants and all related titles, logos and characters are trademarks of Viacom International Inc. Created by Stephen Hillenburg.

*Stephen Hillenburg*

www.bobthebuilder.com © 2009 HIT Entertainment Limited and Keith Chapman. All Rights Reserved. The Bob the Builder name and character, related characters and riveted logo are trademarks of HIT Entertainment Limited. Reg. U.S. & Tm. Off. and other countries.

©2009 HIT Entertainment Limited. HIT and the HIT logo are trademarks of HIT Entertainment Limited.



©2009 HIT Entertainment Limited. HIT and the HIT logo are trademarks of HIT Entertainment Limited.

HOT WHEELS and associated trademarks and trade dress are owned by, and used under license from Mattel, Inc. © 2009 Mattel, Inc. All Rights Reserved.

Disney • Pixar elements ©Disney • Pixar

[www.fisher-price.com](http://www.fisher-price.com)

## Free Manuals Download Website

<http://myh66.com>

<http://usermanuals.us>

<http://www.somanuals.com>

<http://www.4manuals.cc>

<http://www.manual-lib.com>

<http://www.404manual.com>

<http://www.luxmanual.com>

<http://aubethermostatmanual.com>

Golf course search by state

<http://golfingnear.com>

Email search by domain

<http://emailbydomain.com>

Auto manuals search

<http://auto.somanuals.com>

TV manuals search

<http://tv.somanuals.com>