

Fisher-Price®

V8311

# SMART CYCLE® RACER

PHYSICAL LEARNING ARCADE SYSTEM

**RESCUE  
HEROES**



---

## **NOTICE ABOUT EPILEPSY AND SEIZURES**

### **PLEASE READ THIS NOTICE BEFORE YOU OR YOUR CHILD USE ANY VIDEO GAME.**

A very small portion of the population have a condition which may cause a momentary loss of consciousness when viewing certain kinds of flashing lights or patterns that are commonly present in our daily environment. This condition may cause seizures while watching some kinds of television pictures or playing certain video games. Players who have not had any previous seizures may nonetheless have an undetected epileptic condition.

If you or anyone in your family has experienced symptoms linked to an epileptic condition (e.g. a seizure or loss of awareness), consult your physician before playing video games. We recommend that parents observe their children while they play video games. If you or your child experience any of the following symptoms such as dizziness, altered vision, eye or muscle twitching, involuntary movements, loss of awareness, disorientation or convulsions, **DISCONTINUE USE IMMEDIATELY** and consult your physician.

Additionally, please follow these precautions whenever playing a video game:

- Do not sit or stand too close to the television screen. Play as far back from the screen as possible.
- Do not play if you are tired or need sleep.
- Always play in a well lit room.
- Be sure to take a 10-15 minute break every hour while playing.

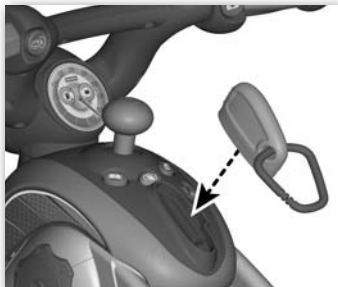
---

## GETTING STARTED

- Please keep these instructions for future reference, as they contain important information.
- Wipe with a clean cloth dampened with a mild soap and water solution. Do not immerse.
- This product has no consumer serviceable parts. Do not take this product apart.



- Protect the environment by not disposing of this product with household waste (2002/96/EC). Check your local authority for recycling advice and facilities (Europe only).

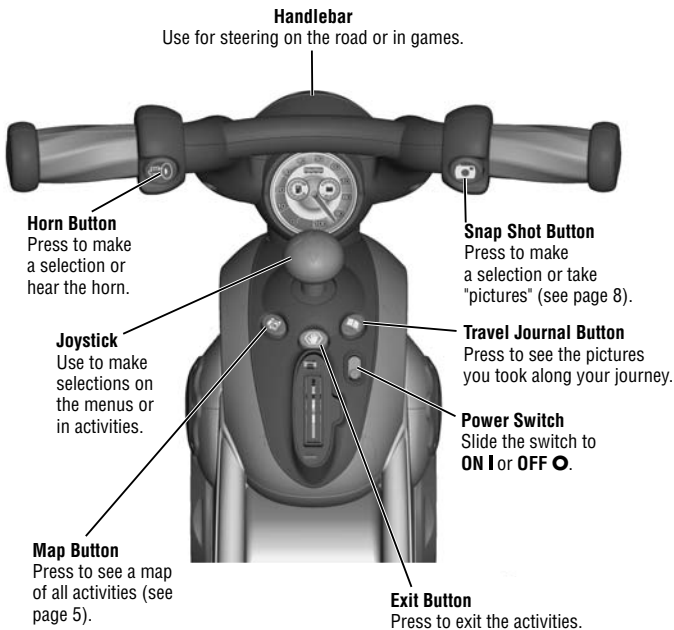


- Insert the game cartridge into the socket on top of the cycle console. Push to be sure it's fully inserted.
- Turn your TV or DVD player/VCR power **ON**.
- Slide the power switch on the cycle to **ON I**.
- To find the picture on your TV screen, set your TV's or DVD player/VCR's mode selector to INPUT or VIDEO IN.

**Note:** You can use this Smart Cycle® software with any Smart Cycle® model.

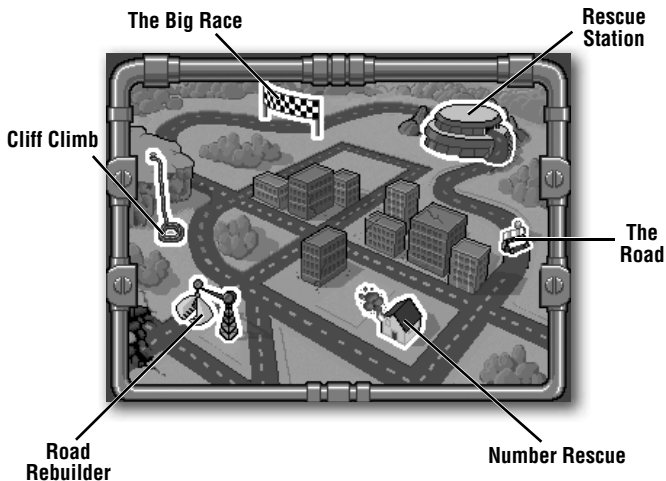
---


## CYCLE CONTROLS





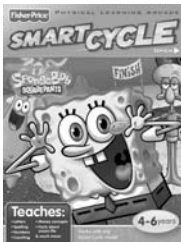
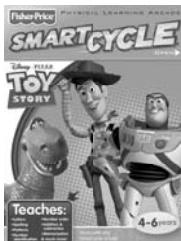
## THE MAP



- You can travel around the track and head onto an off-ramp to access activities or simply press the map button  to visit any of the activities around the course.

# Stretch your mind with other software titles for your Smart Cycle System!

Each sold separately and subject to availability.



© 2010 Viacom International Inc. All Rights Reserved. Nickelodeon, SpongeBob SquarePants and all related titles, logos and characters are trademarks of Viacom International Inc. SpongeBob SquarePants created by Stephen Hillenburg. (s10)



DC SUPER FRIENDS and all related characters and elements are trademarks of and © DC Comics.



WB SHIELD: TM & © Warner Bros. Entertainment Inc. (s10)

Disney • Pixar elements © 2010 Disney • Pixar

Shrek Forever After™ & © 2010 DreamWorks Animation LLC

Fisher-Price, Inc., a subsidiary of Mattel, Inc., East Aurora, NY 14052 U.S.A. ©2010 Mattel, Inc. All Rights Reserved. ®and™ designate U.S. trademarks of Mattel, Inc., unless otherwise indicated.

## www.fisher-price.com



## CHOOSE A RIDE

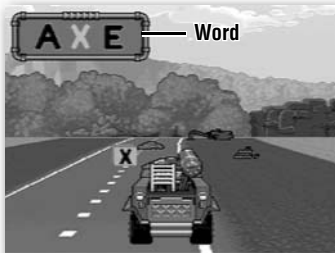


### ***Choose a way to ride!***

- Use the joystick to scroll through choices.
- Press either handlebar button to make your selection.
- Repeat this process to choose a color and horn sound.



## BACK TO THE ROAD



### ***Find the letters and spell a word!***


- Pedal the cycle to drive down the road. *The faster you pedal the faster you go!*
- Use the handlebar to steer.
- Collect letters to spell the word shown in the upper left corner of the screen. Simply drive into them. Don't bump into the other objects.



## BACK TO THE ROAD



### ***Taking Snap Shots.***

- Press the right handlebar button  to take snap shots.

***Hint:*** You can only take snap shots in this activity.

### ***Off ramps***

- Keep traveling down the road or head towards an off-ramp sign for other fun games and activities. Simply bear towards the sign as you see one approaching.

***Hint:*** If you miss your sign, you can pedal in reverse to back up.





## NUMBER RESCUE



***Help put out fires in numerical order and keep the town safe!***

- Use the joystick to move the fire truck towards the fire.
- Press a red handlebar button to spray water.
- Put fires out in numerical order or you might run out of time.
- Put out more fires in each level!
- When you're finished with this activity, press the exit button to return to the road. Pedal to the next activity.



## ROAD REBUILDER

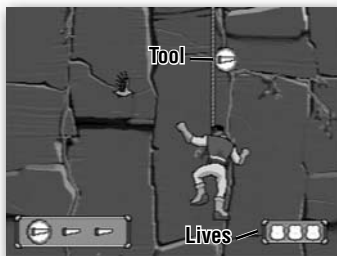


***Help Jake fix the road.***


- Use the joystick to choose a piece of road with the crane.
- Then, press a red handlebar button to select the road piece.
- Next, use the joystick to move the road piece to the right spot on the road.
- Press a red handlebar button to put the road piece in place.
- Complete the road and move to the next level to fix another road!
- When you're finished with this activity, press the exit button to return to the road. Pedal to the next activity.



## CLIFF CLIMB

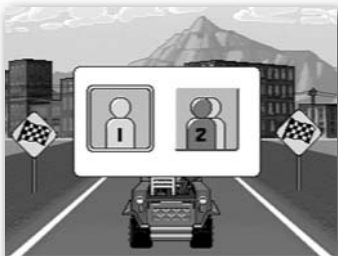


***Collect tools to help the people trapped on the cliff.***

- Use the joystick to move Rocky and collect tools.
- Be careful not to get hit by the bird or run into rocks, or you will lose a life.
- Find all the tools shown at the bottom of the screen. Then, move to the next level and collect the next set of tools.
- When you're finished with this activity, press the exit button  to return to the road. Pedal to the next activity.



## THE BIG RACE

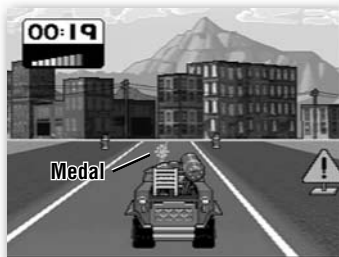


***Pedal as fast as you can to the finish line!***

- Use the joystick to choose *1 Player* or *2 Player* game. Press either handlebar button to select the game.

---

## THE BIG RACE




### **1 Player**

- Pedal down the track as fast as you can to the finish line. Try to speed past the other characters. Get to the finish line first and *you win!*

**Hint:** Drive over medals along the way for a speed boost!

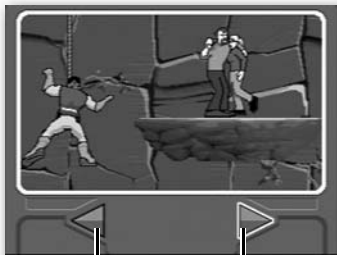


### **2 Player**

- Each player takes a turn. Pedal down the track as fast as you can to the finish line. Look at your time.
- Now it's time for *Player 2* to beat your time.
- The player with the fastest time wins.
- When you're finished with this activity, press the exit button  to return to the road. Pedal to the next activity.




## TRAVEL JOURNAL



**See previous  
snap shot**

**See next  
snap shot**

- Press the travel journal button . Then use the joystick and handlebar buttons to review and select a snap shot.



### CONSUMER ASSISTANCE

1-800-432-5437 (US & Canada)  
1300 135 312 (Australia)

**service.fisher-price.com**

Fisher-Price, Inc., 636 Girard Avenue, East Aurora, NY 14052.  
Hearing-impaired consumers: 1-800-382-7470.

Outside the United States:

Canada: Mattel Canada Inc., 6155 Freemont Blvd.,  
Mississauga, Ontario L5R 3W2; [www.service.mattel.com](http://www.service.mattel.com).

Great Britain: Mattel UK Ltd, Vanwall Business Park,  
Maidenhead SL6 4UB. Helpline: 01628 500303.  
[www.service.mattel.com/uk](http://www.service.mattel.com/uk)

Mattel Europa, B.V., Gonde1 1, 1186 MJ Amstelveen, Nederland.

Australia: Mattel Australia Pty. Ltd., 658 Church Street,  
Locked Bag #870, Richmond, Victoria 3121 Australia.

New Zealand: 16-18 William Pickering Drive,  
Albany 1331, Auckland.

## Free Manuals Download Website

<http://myh66.com>

<http://usermanuals.us>

<http://www.somanuals.com>

<http://www.4manuals.cc>

<http://www.manual-lib.com>

<http://www.404manual.com>

<http://www.luxmanual.com>

<http://aubethermostatmanual.com>

Golf course search by state

<http://golfingnear.com>

Email search by domain

<http://emailbydomain.com>

Auto manuals search

<http://auto.somanuals.com>

TV manuals search

<http://tv.somanuals.com>