

Instruction Sheet

80T-150U

Universal Temperature Probe

INTRODUCTION

The Model 80T-150U Universal Temperature Probe is a self-contained temperature-to-voltage converter. The probe is designed to provide a direct temperature reading when it is connected to any high impedance DMM that is capable of 1 mV resolution and at least a 300-count full scale readout capability. Output is 1 mV per degree (Celsius or Fahrenheit). Two switch-selected temperature output scalings are provided: -50 to +150°C or -58 to +302°F. The probe will stand off 350V dc or peak ac.

The unit is housed in two separate but attached assemblies: a temperature probe and a temperature-to-voltage converter. The probe contains the temperature-sensing element and is electrically connected to the temperature-to-voltage converter through a 46-inch shielded cable. A three-position switch on the converter acts as a power switch and is used for selecting Celsius or Fahrenheit scaling for the output. Two banana plugs with standard 0.75-inch spacing are provided for connecting the 80T-150U to the DMM.

Operating power for the 80T-150U is derived from a standard 9V battery. Typically, an alkaline battery provides more than 1600 hours of continuous operation before replacement is necessary. An OFF switch is provided on the temperature-to-voltage converter to allow battery conservation when the unit is not in use. In addition, the OFF position of the power switch allows the battery condition to be determined via the external DMM.

Temperature is measured by exposing the probe tip directly to the material to be measured (non-corrosive liquid, gas, or solid). A direct temperature reading is displayed on the DMM.

SPECIFICATIONS

The 80T-150U will achieve rated accuracy when it is used with any 0.25% DMM that has an input impedance of $\geq 1 \text{ M}\Omega$.

ELECTRICAL

Measurement Range: -50 to +150 degrees Celsius
-58 to +302 degrees Fahrenheit

Accuracy:

| AMBIENT °C | ACCURACY |
|----------------------------------|---|
| +15 to +35°C | $\pm 1^\circ\text{C}$ from 0 to +100°C, decreasing linearly to $\pm 3^\circ\text{C}$ at -50 and +150°C |
| 0 to 15°C and +35 to +50°C | $\pm 2^\circ\text{C}$ from 0 to +100°C, decreasing linearly to $\pm 4^\circ\text{C}$ at -50 and +150°C |
| AMBIENT °F | ACCURACY |
| +59 to +95°F | $\pm 1.8^\circ\text{F}$ from +32 to +212°F, decreasing linearly to $\pm 5.4^\circ\text{F}$ at -58 and 302°F |
| +32 to +59 °F and +95 to +122 °F | $\pm 3.6^\circ\text{F}$ from +32 to +212°F, decreasing linearly to $\pm 7.2^\circ\text{F}$ at -58 and 302°F |

Sensitivity (80T-150U output): 1 mV dc / °C or °F

Voltage Standoff: 350V dc or peak ac

Settling Time: 5.5 seconds to settle within 2° for a 50° change

ENVIRONMENTAL

Ambient Operating Range for Unit: 0 to +50°C (+32 to +122°F)

Maximum Temperature Probe Body and Cable: +70°C (160°F) See Probe Limitations

Storage Temperature for Unit: -40 to +70°C (-40 to +160°F)

Humidity: 0% to 90% (0°C to 35°C) noncondensing
0% to 70% (35°C to 50°C) noncondensing

Altitude: Operating: $\leq 10,000$ feet
Storage: $\leq 50,000$ feet

Application Force: 20 pounds maximum (probe tip to measured surface)

GENERAL

Weight: 5.7 ounces, 161.5 grams

Overall Length: 53.8 inches, 1.36 meters

Battery: Standard 9V battery (NEDA #1604,6F22,006P)

Battery Life: 1600+ hours, typical (Alkaline Battery), 6.5V minimum

Output Termination: Standard 0.75-inch spaced double banana plug

OPERATING NOTES

The following paragraphs are intended to familiarize the operator with the 80T-150U. The operator should read these paragraphs before attempting to operate the probe.

Probe Limitations

The 80T-150U probe is constructed of a highly durable plastic and is suitable for measuring the temperature of liquids, gases, and solid surfaces up to 150°C. When measuring temperature, observe the following precautions to prevent damage to the probe:

1. Do not expose the probe end (probe tip plus about 2 inches of the probe body) to temperatures exceeding +150°C (302°F). The remainder of the probe body should not be exposed to temperatures above +70°C (160°F).
2. For liquid measurements, recommended applications range from water, lubricants, and fuels to most solvents. Liquids as shallow as ½ inch can be measured since the temperature sensor is in the probe tip.

WARNING

TO AVOID ELECTRICAL SHOCK, DO NOT USE THIS INSTRUMENT WHEN VOLTAGES EXCEEDING 350V DC OR PEAK AC ARE PRESENT. THE PROBE TIP IS ELECTRICALLY CONNECTED TO THE OUTPUT TERMINALS.

CAUTION

Long-term exposure of the probe to corrosive environments will result in pitting and deterioration of the aluminum probe tip.

Error Sources

When the probe tip is applied to a solid surface, it draws or sinks heat from the surface. Therefore, if the measured surface has a low mass (e.g., a transistor case), the indicated temperature may be lower than the actual temperature.

Similarly, a steady-state error or gradient exists between the measured surface and the sensing device in the probe tip. This is due to the flow of heat from the measurement surface to the probe body. The effect of the steady-state error increases as the differential between ambient and surface temperature increases.

To determine the actual surface temperature of a device, both the heat-sinking and steady-state errors must be considered. The correction curve given in Figure 1 approximates the effect of both error sources on TO-3, TO-5, and TO-18 transistor cases.

RF signals applied to the 80T-150U probe tip can also cause errors in temperature measurement. Figure 2 defines the rf signal limits that can be tolerated without degrading measurement accuracy.

OPERATION

Use the following procedure to operate the 80T-150U probe:

1. Connect the banana plugs on the 80T-150U to the input terminals of a high impedance DMM. Observe polarity.
2. Select a dc voltage range that will provide at least 1 mV resolution (1 mV/degree) and a full scale readout that will encompass the expected temperature. The 2V range of a 3 1/2-digit DMM is adequate. Ignore readings of less than 1° when a more sensitive DMM is used.
3. Set the 80T-150U power switch to °C or °F, and energize the DMM.
4. Firmly touch the probe tip to the surface to be measured, or expose it to a liquid or gas. The DMM will display the temperature in degrees. Vary the probe angle and pressure when measuring solid surface temperatures. The highest stabilized reading will be the most accurate. (See the following measuring technique.)

CAUTION

The force exerted on the probe tip should not exceed 20 pounds.

MEASURING TECHNIQUE

Here are some suggestions for improving the accuracy of your temperature measurements:

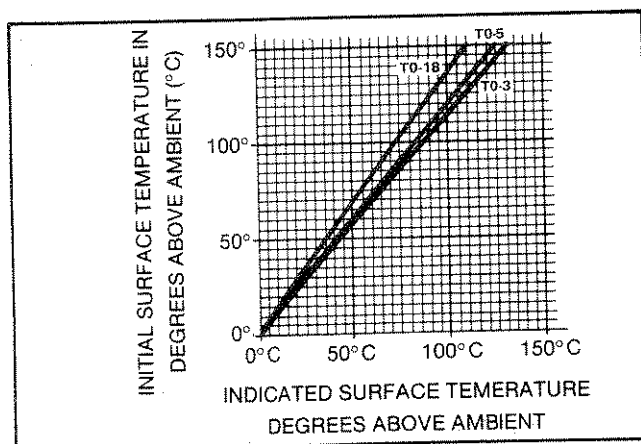


Figure 1. Initial Case Temperature Above Ambient vs. Meter Reading Above Ambient

1. When measuring higher than ambient temperatures, adjust the connection between the probe and the surface until you get the highest temperature reading.
2. When measuring lower than ambient temperatures, adjust the connection between the probe and the surface until you get the lowest temperature reading.
3. When measuring near ambient temperatures, make the reading when the multimeter readout is most stable.

THEORY OF OPERATION

The Model 80T-150U uses the negative temperature coefficient of a semiconductor (P-N) junction to measure temperature. The PN junction is thermally integrated into the probe tip and comprises one leg of a bridge circuit as shown in the simplified circuit diagram of Figure 3. One 9V battery is used to power both the bridge circuit and operational amplifier AR1. Since the bridge must be balanced to provide 0°C and 0°F indications, separate range or temperature scale resistors R7 and R6 are included in the bridge circuit. When R6 and R2 are shorted by S1, the °C scale is selected and the bridge is calibrated by R3 to null at 0°C. Conversely, when S1 is open, the °F scale is selected, and the bridge is calibrated by R2 to null at 0°F. Deviations above and below 0° provide a bridge output of approximately 2.45 mV/°C.

Operational amplifier AR1 is used to measure the bridge output and scale it to a 1 mV/degree signal. Since the °C and the °F scale are sloped differently, the scale for AR1 must be matched with the scale selected for the bridge circuit. Shorting resistors R15 and R18 selects the °C scale. Conversely, when S1 is open, the °F scale is selected. Resistor R4 calibrates both scales.

The output voltage used to drive the external voltmeter is taken from the output of AR1 (P2) and the reference side of the bridge (P1). Since AR1 is operating as an inverting amplifier, its output is used as the low input to the voltmeter. This enables the voltmeter to display an increase in temperature as an increase in voltage.

GENERAL MAINTENANCE

Access Information

The battery and the calibration pots are located on the interior of the temperature-to-voltage converter assembly. Access to these locations is accomplished by removing the screw from the bottom side of the assembly and removing the top of the plastic case.

Battery Condition Test

1. Set the power switch to the OFF position.
2. Connect the 80T-150U to the DMM.
3. Set the DMM to the 200 or 300 mV dc range.
4. Read the battery test voltage on the DMM. A minimum reading of 100 mV is acceptable and indicates that approximately 100 hours of battery life remain.

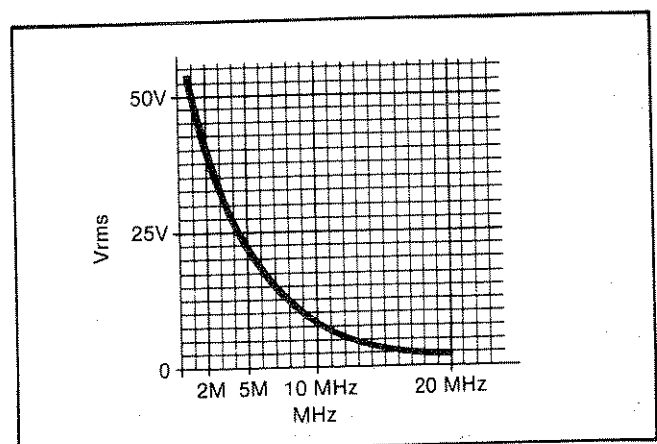


Figure 2. Maximum Signal RF Limits (Vrms) at Probe Tip

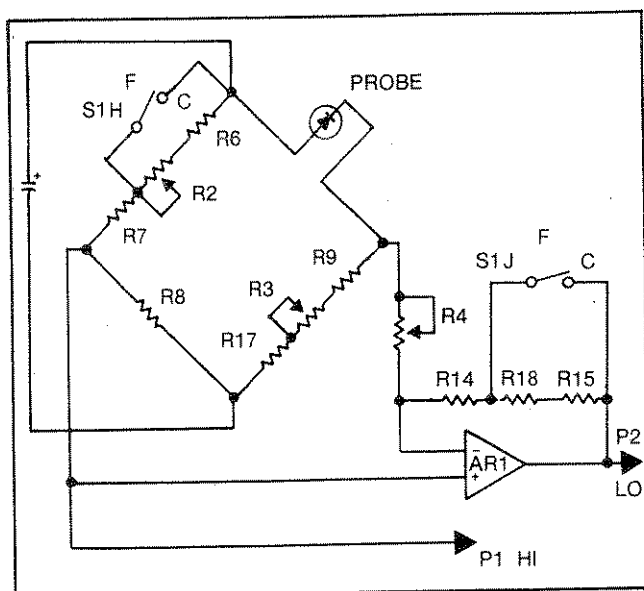


Figure 3. Simplified Circuit Diagram

Battery Replacement

WARNING

TO AVOID ELECTRICAL SHOCK, REMOVE THE PROBE FROM THE MEASUREMENT SURFACE BEFORE OPENING THE CASE. TOTALLY REASSEMBLE THE INSTRUMENT BEFORE ATTEMPTING TO USE IT.

1. Set the power switch to the OFF position.
2. Disconnect the 80T-150U from the DMM.
3. Turn the 80T-150U so the power switch is facing down. Remove the single screw located between the banana plugs.
4. Grasp one case half in each hand. Pull the two halves apart, beginning at the end with the banana plugs.
5. Remove and replace the battery.
6. Reassemble the 80T-150U as follows. Mate the two case halves at the end where the cable enters the case, then "hinge" the two halves together. Replace the case screw, being careful not to pinch the probe cable or battery wires.

PERFORMANCE TEST

Complete the calibration procedure without opening the temperature-to-voltage converter assembly and without making any calibration adjustments. Observe the readings given in [brackets]. Other readings are for calibration only.

CALIBRATION

A calibration cycle of one year is recommended to maintain the unit within the specifications given earlier. The equipment required for calibration is listed in the table following the calibration procedure.

NOTE

Values given in brackets apply to the Performance Test.

Perform the following steps to calibrate the 80T-150U:

1. Access the interior of the temperature-to-voltage converter by removing the bottom case screw and separating the case halves.
2. Connect the 80T-150U to a DVM with 10 μ V resolution, and select mV dc range.
3. Select the °C position of the switch. Immerse the probe tip 2 inches into a mercury thermometer monitored 0°C bath, and allow 60 seconds for the readings to stabilize.
4. Adjust R3 (see Figure 4) to obtain the following reading:
0.00 \pm 0.05 mV dc [0 \pm 2 mV dc]
5. Select the °F position of the switch, and adjust R2 to obtain the following reading:
32.0 \pm 0.1 mV dc [32.0 \pm 4 mV dc]
6. Select the °C position, and move the probe tip to a 70°C to 90°C bath and again allow the readings to stabilize.
7. Adjust R4 to obtain a DVM reading that agrees with the bath temperature (BT) as monitored by a mercury thermometer.
°C BT \pm 0.05 mV dc [BT \pm 2 mV dc]
8. Select the °F position, and verify that the output is within \pm 4 mV dc of the bath thermometer reading. If necessary, change the DVM range to obtain an on-scale reading.
9. Return the probe tip to the 0°C bath and check the output. If readjustment is necessary, repeat steps 4 through 8 until readings can be obtained without adjustment.
10. Set the 80T-150U switch to the OFF position, and remove the 80T-150U from the DVM.
11. Reassemble the 80T-150U.
12. The 80T-150U is now calibrated.

PROBE REPLACEMENT

A probe kit (80T-150-7001K, PN 431023) is available for replacing damaged or defective probes. The kit includes a probe and cable assembly and an installation and calibration instruction sheet.

LIST OF REPLACEABLE PARTS

A Schematic of the 80T-150U is shown in Figure 4. A list of replaceable parts is shown in Figure 5. When ordering parts, provide the description, Fluke part number, and the quantity required.

Test Equipment Requirements

| INSTRUMENT TYPE | MINIMUM USE SPECIFICATIONS | RECOMMENDED MODEL |
|--------------------------|--|----------------------------|
| Mercury Thermometer | 0.1°C Resolution | Princo Model SAMA-CP45 |
| Dewar Flask and Cap | 1-Pint Capacity (for Ice Bath) | Thermos Bottle |
| Metal or Glass Container | 1-Pint Capacity | Suitable for Boiling Water |
| Digital Voltmeter | 100 mV Range with 10 μ V Resolution 1000 mV Range with 100 μ V Resolution | Fluke Model 8840A |

For application or operation assistance or information on Fluke products call:

800-426-0361 in most of U.S.A.
206-356-5400 from AK, HI, and WA
206-356-5500 from other countries

John Fluke Mfg. Co., Inc.
P.O. Box C9090
Everett, WA 98206

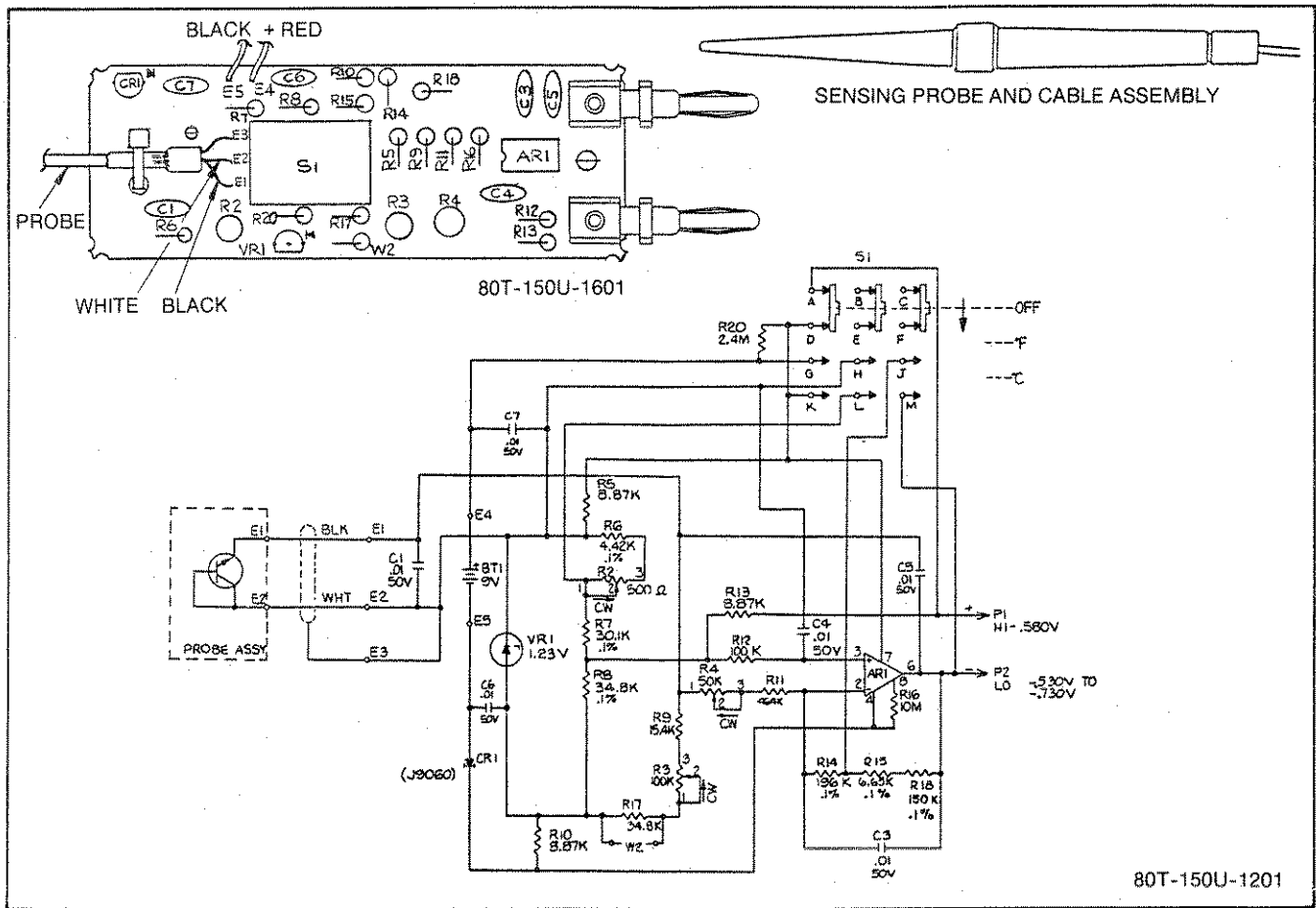


Figure 4. 80T-150U Temperature Probe Schematic

Figure 5. List of Replaceable Parts

| REFERENCE DESIGNATOR | JF P/N | DESCRIPTION |
|----------------------|--------|---|
| CR1 | 741512 | DIODE,CURRENT REG. |
| VR1 | 729202 | IC,1.23V,150 PPM T.C.,BANDGAP REF |
| C1,3-7 | 697284 | CAP,CER,.01UF,50V |
| R2 | 733642 | RES,VAR,CERM,500 OHMS,.3W |
| R3 | 721829 | RES,VAR,CERM,100K,.3W |
| R4 | 769950 | RES,VAR,CERM,50K,.3W |
| R16 | 720870 | RES,CF,10M,5%,1/4W |
| R20 | 772566 | RES,CF,2.4M,5%,1/4W |
| R5,10,13 | 658922 | RES,MF,8.87K,1%,1/8W |
| R6 | 772525 | RES,MF,4.42K,1%,1/8W |
| R7 | 772574 | RES,MF,30.1K,1%,1/8W |
| R8 | 772582 | RES,MF,34.8K,1%,1/8W |
| R9 | 772038 | RES,MF,15.4K,1%,1/8W |
| R11 | 772020 | RES,MF,464K,1%,1/8W |
| R12 | 757807 | RES,MF,100K,1%,1/8W |
| R14 | 772533 | RES,MF,196K,1%,1/8W |
| R15 | 772558 | RES,MF,150K,1%,1/8W |
| R17 | 772319 | RES,MF,34.8K,1%,1/8W |
| R18 | 772541 | RES,MF,6.65K,1%,1/8W |
| W2 | 682575 | RES,CF,.02,1/4W |
| AR1 | 418913 | IC,OP AMP,BIPOLAR |
| S1 | 772301 | SWITCH,SLIDE,3P3T |
| | 738179 | CONNECTOR,BATTERY |
| | 736033 | PLUG,BANANA |
| | 747501 | SCREW,PHPO,4-40X1/4 |
| | 431023 | SENSING PROBE AND CABLE ASSY 80T-150-7001K |
| | 172080 | CABLE TIE |
| | 778050 | CASE,BOTTOM |
| BT1 | 696534 | BATTERY,NEDA 1604,9V |
| | 129882 | SCREW,PHP,4-40X3/16 |
| | 769034 | CASE,TOP |
| | 735860 | COVER,SWITCH |
| | 428441 | SHOCK ABSORBER |

WARRANTY
ONE YEAR LIMITED WARRANTY

John Fluke Mfg. Co., (Fluke) warrants your accessory to be free from defects in material and workmanship under normal use and service for 1 year from the date of purchase if you are the original purchaser. The warranty does not apply to batteries or fuses or when the accessory has been misused, altered, or damaged by accident or abnormal conditions of operation.

For warranty service, send the accessory with a description of the difficulty, postage prepaid to a Fluke Service Center. Fluke assumes no risk for damage in transit. Fluke will, at our option, repair or replace the defective instrument free of charge. However, if we determine that the failure was caused by misuse, alteration, accident, or an abnormal condition of operation, you will be billed for the repair. The repaired accessory will be returned, transportation prepaid.

FLUKE MAKES NO WARRANTY OTHER THAN THE LIMITED WARRANTY STATED ABOVE. ALL WARRANTIES, INCLUDING IMPLIED WARRANTIES OF MERCHANTABILITY OR FITNESS FOR ANY PARTICULAR PURPOSE, ARE LIMITED TO A PERIOD OF 1 YEAR FROM THE DATE OF PURCHASE. FLUKE SHALL NOT BE LIABLE FOR ANY SPECIAL, INCIDENTAL, OR CONSEQUENTIAL DAMAGES, WHETHER IN CONTRACT, TORT, OR OTHERWISE.

NOTE (USA only): Some states do not allow limitation of implied warranties, or the exclusion of incidental or consequential damages, so the above limitations or exclusions may not apply to you. This warranty gives you specific legal rights, and you may have other rights, which vary from state to state.

Free Manuals Download Website

<http://myh66.com>

<http://usermanuals.us>

<http://www.somanuals.com>

<http://www.4manuals.cc>

<http://www.manual-lib.com>

<http://www.404manual.com>

<http://www.luxmanual.com>

<http://aubethermostatmanual.com>

Golf course search by state

<http://golfingnear.com>

Email search by domain

<http://emailbydomain.com>

Auto manuals search

<http://auto.somanuals.com>

TV manuals search

<http://tv.somanuals.com>