



This Quick Reference Guide is not intended to replace your Owner's Guide, which contains more detailed information concerning the features of your vehicle and important safety warnings to help reduce the risk of injury to you and your occupants. Always read your entire Owner's Guide carefully when first learning about your vehicle and refer to the appropriate section when questions arise.

Ford Motor Company
Customer Relationship Center
P.O. Box 6248
Dearborn, MI 48121
1-800-392-3673 (FORD)
(TDD for the hearing impaired: 1-800-232-5952)



7L3J 19G217 AA

April 2007
First Printing
Quick Reference Guide

F-150
Litho in USA

PREMIUM/AUDIOPHILE IN-DASH SIX CD/MP3/ SATELLITE COMPATIBLE SOUND SYSTEM (If equipped)



1 CD EJECT: Press ▲ and a preset (1-6) to eject a CD. Press and hold to auto-eject all CDs present in the system.

2 TUNE/DISC SELECTOR: Press to manually move up or down the radio frequency or to select a desired disc. Also use in menu mode to select various settings.

3 MENU: Press repeatedly to cycle through the following modes: Category (if equipped with satellite radio), Treble, Bass, Balance, Fade, SPEEDVOL (Speed Sensitive Volume, if equipped), ALL SEATS (Occupancy Mode), Clock, Autoset, Track/Folder, Compression, and RBDS.

4 SEEK: In radio mode, press to move to the next strong station up or down the frequency band. In CD mode, press to move to the next/previous track on the current disc.

5 TEXT/SCAN: Press and hold for a brief sampling of stations or CD tracks. In CD/MP3 mode, press and release to display track title, artist name, disc title and file name (if available).

6 SETTING MEMORY PRESETS: Select the desired radio station or satellite radio channel (if equipped). Press and hold a memory preset (1-6) until the sound returns. You may store up to six stations in AM/FM1/FM2, SAT 1, SAT2 and SAT3.

7 AM/FM AND CD: Press AM/FM to select AM, FM1 or FM2 frequency bands. Press CD to enter CD/MP3 mode.

8 LOAD: Press LOAD and then a preset number to select a slot. Press and hold LOAD to activate autoloader, for loading up to 6 CDs.

9 SATELLITE RADIO FEATURES AND CONTROLS (if equipped):

AUX: Press repeatedly to cycle through FES/DVD (if equipped), SAT 1, SAT2, SAT3 (satellite radio mode if equipped) or LINE IN (auxiliary audio mode if equipped). Once satellite radio mode is activated you may use the following functions:

Press MENU until CATEGORY MODE appears in the display. CATEGORY ALL will allow you to seek all available SIRIUS categories and channels. Press ◀ SEEK ▶ or TEXT/SCAN to select from various categories of music (country, rock, etc.). Press and hold ◀ SEEK ▶ or TEXT/SCAN to search for channels playing that specific category of music.

Press ◀ SEEK ▶ to access the previous/next channels. Press and release TEXT/SCAN to display current song title. Press again to scroll through current song title, artist, channel category and the SIRIUS long channel name. Press and hold for a brief sampling of the next channels. Press again to stop.

If your vehicle is equipped with the navigation system, please refer to the Navigation Supplement for more information.

CLIMATE CONTROL SYSTEMS



AUTOMATIC TEMPERATURE CONTROL (if equipped)

1 TEMPERATURE CONTROL: Increases/decreases the temperature of the vehicle.

2 AUTO: Press to engage and select the desired temperature using the temperature control. The system will automatically determine fan speed, airflow location, A/C on or off, and outside or recirculated air, to heat or cool the vehicle to reach the desired temperature.

3 DRIVER HEATED SEAT CONTROL (if equipped): Press once to activate high heat; press a second time to activate low heat. Press a third time to deactivate.

4 AIRFLOW DIRECTION CONTROLS: This mode allows you to choose the air distribution mode you desire.

: Distributes air through the instrument panel and center console registers.

: Distributes air through the instrument panel, center console registers (if equipped), and the front and rear seat floor vents.

: Distributes air through the floor and rear seat floor vents. The system will automatically provide outside air to reduce window fogging.

: Distributes air through the windshield defroster vents, demister outlets, and the front and rear seat floor vents. The system will automatically provide outside air to reduce window fogging.

5 A/C: Activates/deactivates the air conditioning.

6 RECIRCULATION: Recirculates air in the cabin, thereby reducing the amount of time to cool down the interior of the vehicle when used with A/C.

7 HEATED MIRRORS (if equipped): Press to activate/deactivate. This function will clear snow, fog and thin ice from the side rear view mirrors.

8 DEFROST: Used to clear ice or fog from the windshield by distributing air through the windshield defroster vents.

9 FAN SPEED CONTROL: Increases/decreases the fan speed.

10 PASSENGER HEATED SEAT CONTROL (if equipped): Press once to activate high heat; press a second time to activate low heat. Press a third time to deactivate.

MAX A/C OVERRIDE OF AUTO FUNCTION: Select airflow direction. Then select A/C and recirculated air. Set the temperature setting to 60°F. Adjust fan speed to maintain comfort.



MANUAL TEMPERATURE CONTROL (if equipped)

1 FAN SPEED ADJUSTMENT: Controls the volume of air circulated in the vehicle.

2 TEMPERATURE SELECTION DIAL: Controls the temperature of the airflow in the vehicle.

3 AIRFLOW SELECTION DIAL: Controls the direction of the airflow in the vehicle.

MAX A/C: Uses recirculated air to cool the vehicle. Air flows from the instrument panel vents and center console vents (if equipped).

: Distributes air through the instrument panel vents and center console vents (if equipped).

: Distributes air through the instrument panel vents, center console vents (if equipped) and the floor vents.

: (OFF) Outside air is shut out and the climate system is turned off.

: Distributes air through the floor vents.

: Distributes air through the windshield defroster vents and floor vents.

: Distributes outside air through the windshield defroster vents.

4 A/C (if equipped): Press to activate/deactivate air conditioning. Use with recirculated air to improve cooling performance. A/C engages automatically in MAX A/C, defrost and floor defrost modes.

5 RECIRCULATED AIR: Press to manually enable or disable recirculated air operation. When activated, air recirculates in the cabin, reducing the amount of time to cool down or warm up the interior of the vehicle. This feature engages automatically with MAX A/C or can be engaged manually in any mode except defrost . Recirculation may turn off automatically in all airflow selections except MAX A/C.

6 HEATED MIRRORS (if equipped): Press to activate/deactivate. This function will clear snow, fog and thin ice from the side rear view mirrors.

ESSENTIAL INFORMATION

FUEL – Your vehicle is designed to use "Regular" unleaded gasoline with pump (R+M)/2 octane rating of 87. If your vehicle is a flexible fuel vehicle (FFV), use only unleaded fuel and fuel ethanol (Ed 75 - Ed 85). For more information, please refer to your Owner's Guide.

TIRE PRESSURE – Your tire pressure is properly set at the dealership to the recommended specifications found on the Tire Label or Certification Label located inside on the edge of the driver's door pillar. Please check your tire pressure during routine maintenance and seasonal changes.

FUSES – If electrical components in the vehicle are not working, a fuse may have blown. For more information about changing a fuse, refer to your Owner's Guide.

FUEL PUMP SHUT-OFF SWITCH – After a collision, if the engine cranks but does not start, the fuel pump shut-off switch may have to be reset. The switch is located in the front passenger's footwell, behind the kick panel access cover, to the left of the fuse box. For complete details on resetting the switch, refer to your Owner's Guide.

CHANGING THE TIRES – For more information on changing the tires, refer to your Owner's Guide.

LOCATION OF THE SPARE TIRE AND TOOLS

ITEM	LOCATION
Spare Tire	Under the vehicle, just forward of the rear bumper.
Jack, Jack Handle, Wheel Nut Wrench	REGULAR CAB: Behind the interior trim on the rear passenger side of the vehicle. SUPERCAB and SUPERCREW: Under the rear seat on the passenger side of the vehicle.

ROADSIDE EMERGENCIES

To fully assist you if you should have a vehicle concern, Ford offers a complimentary Roadside Assistance Program. This program is separate from the New Vehicle Limited Warranty. The service is available 24 hours a day, seven days a week for the New Vehicle Limited Warranty period (U.S.) or Basic Warranty period (Canada) of three years or 36,000 miles (60,000 km). Roadside Assistance will cover: Changing a flat tire, jump-starts, limited fuel delivery, lock-out assistance, and towing of your vehicle.

Roadside Assistance Centers: UNITED STATES (800) 241-3673 | CANADA (800) 665-2006

For complete details on any roadside assistance concern, see the Roadside Emergencies section or the Customer Assistance section in your Owner's Guide.



2007 Quick Reference Guide



The Ford F-150: there's nothing like it on earth. It's the boldest, strongest, and most capable Ford F-150 to roam the crowded street or climb a remote trail. Outside, its stance is firm. Inside, it initiates a new era of truck design and comfort. Underneath, it is built on the strongest, most advanced F-150 chassis and suspension ever. And above all, it is Built Ford Tough. The F-150 comes equipped with many new features, some of which will require no explanation, while others may be new to you. This Quick Reference Guide was designed to acquaint you with many of the features you will use most. This Quick Reference Guide is not intended to replace the vehicle Owner's Guide. Please refer to it for more detailed information on your F-150.



1 HEADLAMP AND PANEL DIMMER CONTROL

Rotate the control clockwise one position from off to turn on the parking lamps. Rotate two positions from off to also turn on the headlamps. Rotate counterclockwise from off to activate autolamp (if equipped), which provides light-sensitive automatic on/off control of the exterior lights and keeps them on for a short period of time after the ignition is turned off. When the control is in any position except high beams or off, pull the control toward you to activate the foglamps (if equipped).



Use the panel dimmer control, located to the right of the headlamp control, to adjust the brightness of the instrument panel during the headlamps and parking lamps operation. Rotate to the full up position, past the detent, to turn on the interior lamps. Rotate to the full down position, past the detent, to prevent the interior lights from illuminating when doors are opened.

2 POWER ADJUSTABLE PEDALS (if equipped)

Press and hold the top end of rocker control to adjust the accelerator and brake pedals away from you. Hold the lower end of the control to move the pedals toward you. Adjust the pedals only when the vehicle is stopped and the gearshift lever is in the P (Park) position.



If equipped with memory function, the adjustable pedals, along with the driver's seat, can be automatically positioned in two programmable positions using the control located on the driver's seat. Refer to your Owner's Guide for instructions on how to use this memory feature.

3 SERVICE ENGINE SOON LAMP

Illuminates briefly when the ignition is turned to the ON position, to ensure the system is functional. If the light comes on after the engine is started, refer to your Owner's Guide. This lamp will illuminate if the fuel cap is not fully secured. In addition, "Check fuel cap" will appear in the message center display (if equipped). Make sure that the fuel cap is secure by turning it clockwise 1/4 of a turn until it stops.



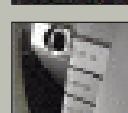
4 ABS WARNING LAMP

Illuminates briefly when the ignition is turned to the ON position. If the light comes on after the engine is started, refer to your Owner's Guide.



5 SPEED CONTROL (if equipped)

To set the speed control, press the ON button and release. Accelerate to the desired speed and press the SET button and release. Once the system is engaged, an icon will appear in the instrument cluster. To increase speed, tap the SET button and the speed will increase in small increments each time, or use the accelerator pedal to reach desired speed and then press SET. To reduce speed, press and hold CST until desired speed is reached. Release or tap the CST button and speed will decrease in small increments. Also, you can depress the brake pedal until desired speed is reached and press SET. Press RES/RESUME to return the vehicle to a previously set speed if the vehicle is traveling more than 30 mph (48 km/h).



STEERING WHEEL CONTROLS (if equipped)

These controls allow you to operate features of the radio and climate control systems. Press **1** to select AM, FM1, FM2 (if equipped), TAPE, CD, FES/DVD, AUX (if equipped) or SAT1, SAT2, or SAT3, if your vehicle is equipped with these features. In AM, FM1 or FM2 mode, press and release SEEK to select the next preset station or press and hold SEEK to select the next strong station within the selected radio band. In CD mode, press and release SEEK to select the next track selection on the CD or press and hold SEEK to fast forward in the current track selection. In CD mode, press SEEK to select the next selection on the CD. In any mode, press VOL + or - to adjust volume. Press TEMP + or - to adjust temperature and FAN + or - to adjust fan speed.

7 MESSAGE CENTER (if equipped)

With the ignition on, the message center displays important vehicle information through a constant monitor of vehicle systems. The system will notify you of potential vehicle problems by displaying warnings, followed by a long indicator chime. You may select the INFO or SETUP buttons on the message center to display trip odometer, odometer, compass, distance to empty, average fuel economy, and trip elapsed drive time. The RESET button may be used to reset selected functions in the INFO and SETUP menus. For more information about message center functions, please refer to your Owner's Guide.



8 FOUR-WHEEL DRIVE CONTROL (if equipped)

2H (2WD HIGH) delivers power to the rear wheels only and is the optimal position for smoothness and fuel economy. 4H (4x4 HIGH) provides mechanically locked four-wheel drive power to all four wheels. 4L (4x4 LOW) provides mechanically locked four-wheel drive when extra power at reduced speeds is required. With either an electronic shift 4WD system or manual 4WD system, to shift from 2H to 4H move the control at any forward speed up to 55 mph (88 km/h). To shift to or from 4L, bring the vehicle to a stop and keep the brake pedal depressed. Next, place the gearshift in N (Neutral), and then move the control to or from 4L. Some mechanical noise may be heard when the system engages. This is normal and no service is required. Note: The manual 4WD system has an N (Neutral) position in the transfer case. This setting overrides the transmission and puts the vehicle in Neutral regardless of gearshift position. This setting should only be used when towing the vehicle.



9 AUXILIARY INPUT JACK (if equipped)

Your vehicle may be equipped with an Auxiliary Input Jack (AIJ) located in the instrument panel tray. This allows you to plug and play auxiliary audio devices. Press AUX repeatedly on your audio system to access. When LINE IN appears in the display, plug in your auxiliary audio device. For more information, please refer to your Owner's Guide.

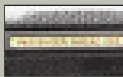


10 IN-DASH CD6/MP3 DISC AUDIO SYSTEM (if equipped)

Please see reverse side for more details.

11 PASSENGER AIRBAG DEACTIVATED LAMP (if equipped)

Please refer to the Seating and Safety Restraints section of your Owner's Guide for information on the Passenger Airbag Deactivated Lamp.



12 TRACTION CONTROL™ (if equipped)

The TCS switch has an indicator light that illuminates when the system is off. The system will automatically turn on every time the ignition is turned off and on. For more information, please refer to your Owner's Guide.

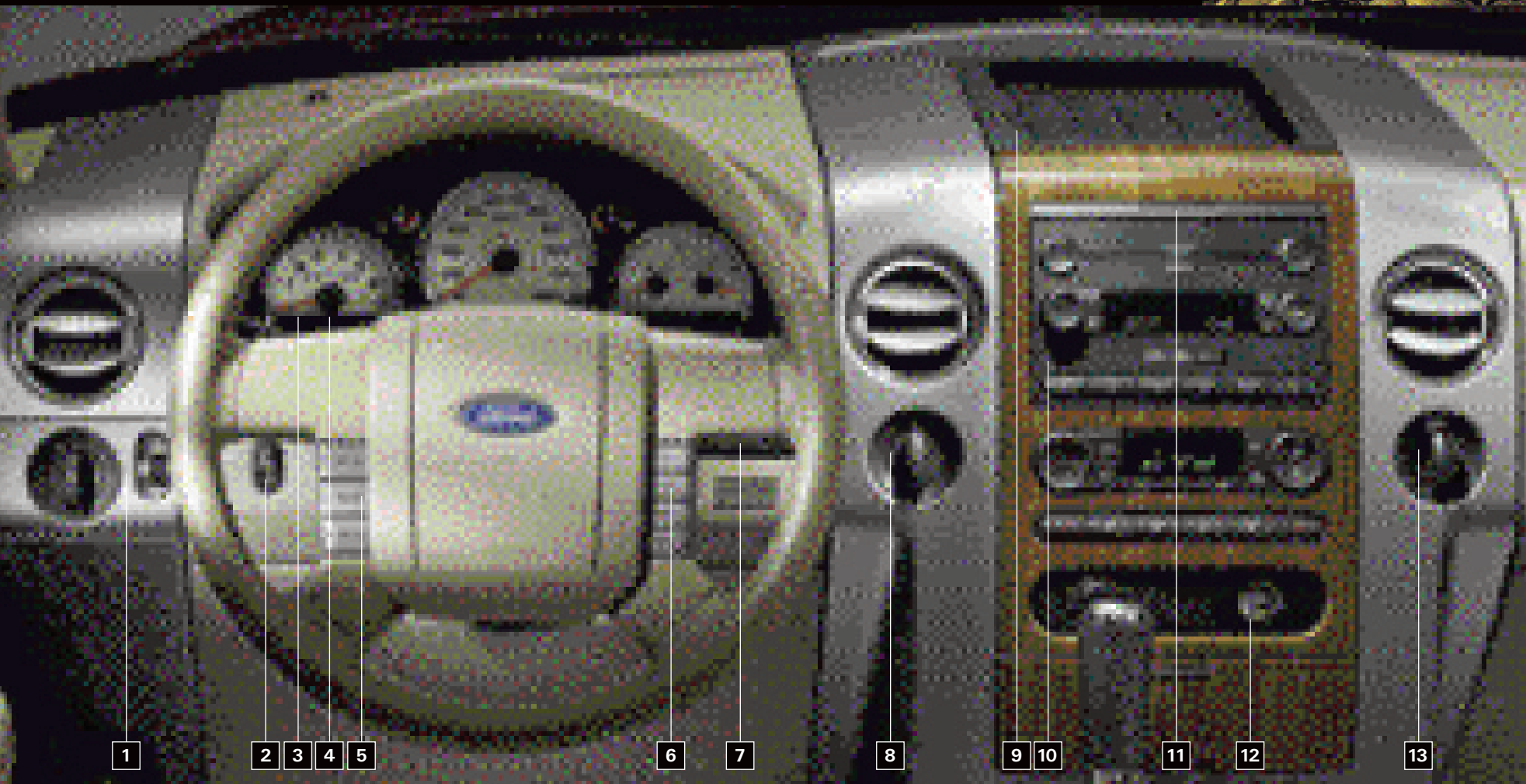


13 AUXILIARY POWER POINT (12V)

An auxiliary power point is located on the instrument panel. For SuperCab and SuperCrew vehicles, there is an additional auxiliary power point located on the lower rear side of the center console that is accessible from the rear seats. Do NOT plug optional electrical accessories into the cigarette lighter.



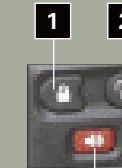
COCKPIT FEATURES



ADDITIONAL FEATURES

REMOTE ENTRY SYSTEM (if equipped)

- 1 Press this control once to lock all doors. The parklamps will flash. Pressing the control a second time will chirp the horn to confirm that all doors are closed and locked, and the parklamps will flash once more.
- 2 Press this control once to unlock the driver's door and twice to unlock all doors.
- 3 Press this control to sound the panic alarm. To silence, press the control again, or turn the ignition on.



The remote entry system can also control the memory feature (if equipped). Please refer to your Owner's Guide for instructions on how to activate this feature.

KEYLESS ENTRY SYSTEM (if equipped)

With this control you can lock or unlock all doors without using a key. Unlock all doors = Enter the five-digit program code and then press 3 · 4
Lock all doors = Press 7 · 8 and 9 · 0 at the same time



DRIVER / PASSENGER BELTMINDER

The BeltMinder feature is a supplemental warning to the safety belt warning function. This feature provides additional reminders by intermittently sounding a chime and illuminating the safety belt warning lamp in the instrument cluster when the driver's and front passenger's safety belts are unbuckled. Both the driver's and front passenger's safety belt usages are monitored and either may activate the BeltMinder feature.



REVERSE SENSING SYSTEM (RSS) (if equipped)

This sonar system sounds a tone to warn the driver of obstacles near the rear bumper when the reverse gear is selected. Obstacles can be detected within approximately 6 feet (2 m) behind the rear bumper while the vehicle moves in reverse at speeds less than 3 mph (5 km/h). The reverse sensing system defaults to on, but can be disabled by turning the ignition on, placing the gearshift in (R) Reverse and pressing the RSS control.



An indicator light on the control, located next to the cigarette lighter, will illuminate when the system is turned off.

TIRE PRESSURE MONITORING SYSTEM (if equipped)

Using radio-frequency pressure sensors, this system monitors tire pressure on all road tires and provides the driver with a yellow warning light when air needs to be added. Message center equipped vehicles provide additional warning messages. The TPMS warning light will reset itself (turn off) after the tires are set to specification and the vehicle is driven above 20 mph (32 km/h) for at least 2 minutes. Please Note: Outside temperature affects tire pressure. Please refer to your Owner's Guide.

TOWING INFORMATION

For more details on towing with your vehicle, please refer to your Owner's Guide or request a copy of the *Ford Motor Company RV and Trailer Towing Guide* from your dealer.

Free Manuals Download Website

<http://myh66.com>

<http://usermanuals.us>

<http://www.somanuals.com>

<http://www.4manuals.cc>

<http://www.manual-lib.com>

<http://www.404manual.com>

<http://www.luxmanual.com>

<http://aubethermostatmanual.com>

Golf course search by state

<http://golfingnear.com>

Email search by domain

<http://emailbydomain.com>

Auto manuals search

<http://auto.somanuals.com>

TV manuals search

<http://tv.somanuals.com>