

2008 TAURUS X QUICK REFERENCE GUIDE

FORD MOTOR COMPANY
CUSTOMER RELATIONSHIP CENTER
P.O. BOX 6248
DEARBORN, MI 48121
1-800-392-3673 (FORD)
(TDD FOR THE HEARING IMPAIRED: 1-800-232-5952)

This Quick Reference Guide is not intended to replace your vehicle Owner's Guide which contains more detailed information concerning the features of your vehicle, as well as important safety warnings designed to help reduce the risk of injury to you and your passengers. Please read your entire Owner's Guide carefully as you begin learning about your new vehicle and refer to the appropriate sections when questions arise.

All information contained in this Quick Reference Guide was accurate at the time of duplication. We reserve the right to change features, operation and/or functionality of any vehicle specification at any time. Your Ford dealer is the best source for the most current information.

For detailed operating and safety information, please consult your Owner's Guide.



8F9J 19G217 AB

SEPTEMBER 2007
SECOND PRINTING
QUICK REFERENCE GUIDE



ADDITIONAL FEATURES

INTEGRATED KEYHEAD TRANSMITTER (IKT) AND REMOTE ENTRY SYSTEM

Your vehicle comes equipped with two specially programmed Integrated Keyhead Transmitters (IKTs). IKTs are both a programmed ignition key and a remote keyless entry transmitter. Handle the IKT carefully when starting the car to avoid accidentally pressing any of the driver's door. The interior lamps will illuminate. Press twice within three seconds, to unlock all the doors. Press once to lock all the doors. Press twice to confirm all the doors and liftgate are closed. On the first press of , the turn lamps will flash. On the second press within 3 seconds, the horn will chirp and the turn signal lamps will flash once if all the doors and the liftgate are closed. Press to activate the panic alarm. Press again or turn the key in the ignition to deactivate the panic alarm. Press twice within 3 seconds to activate the car finder feature; your horn will chirp and your turn signal lamps will flash. It is recommended that this method be used to locate your vehicle, rather than using the panic alarm. Press twice within 3 seconds to open the liftgate glass. Ensure that you keep the IKT adhesive security label in a safe place for future reference. Replacements are only available through an authorized dealer.



POWER LIFTGATE (IF EQUIPPED)

To open the power liftgate, push the button on the instrument panel, press remote entry transmitter (IKT) control twice, or push the button under the center of the license plate lamp shield. For the best performance allow the power system to open the liftgate after pushing the control. Manually pushing or pulling the liftgate may activate the systems obstacle detection feature and stop the power system. Do not open the liftgate in a garage or other enclosed area with a low ceiling. To close the liftgate, press and release



the control located in the left rear quarter panel or pull down the liftgate a few inches to activate power closing. Keep clear of the liftgate when operating the rear switch. The liftgate can be reversed with a second press on a control button or remote entry transmitter and can be manually closed at any time.

KEYLESS ENTRY KEYPAD

The keyless entry keypad can be used to lock the car to avoid accidentally pressing any of the remote entry buttons. Press once to unlock the driver's door. The interior lamps will illuminate. Press twice within three seconds, to unlock all the doors. Press once to lock all the doors. Press twice to confirm all the doors and liftgate are closed. On the first press of , the turn lamps will flash. On the second press within 3 seconds, the horn will chirp and the turn signal lamps will flash once if all the doors and the liftgate are closed. Press to activate the panic alarm. Press again or turn the key in the ignition to deactivate the panic alarm. Press twice within 3 seconds to activate the car finder feature; your horn will chirp and your turn signal lamps will flash. It is recommended that this method be used to locate your vehicle, rather than using the panic alarm. Press twice within 3 seconds to open the liftgate glass. Ensure that you keep the IKT adhesive security label in a safe place for future reference. Replacements are only available through an authorized dealer.



MEMORY FEATURE (IF EQUIPPED)

This feature will allow you to set two positions for the driver's seat, power mirrors and adjustable pedals (if equipped). Please consult your Owner's Guide.



ADJUSTABLE PEDALS (IF EQUIPPED)

The accelerator and brake pedal should only be adjusted when the vehicle is stopped and the gearshift is in the P (Park) position. Press the top of the control to adjust the pedals away from you, or press the bottom of the control to adjust the pedals toward you.



CENTER CONSOLE STORAGE

The utility compartment has a clamshell tray and removable divider for flexible storage of MP3 players, CDs or handbags.



SYNC

Your vehicle may be equipped with SYNC – a hands-free communications and entertainment system with special phone and media features. For more information, please refer to the SYNC Supplement or to the SYNC section in the Navigation Supplement. Please also feel free to visit www.SyncMyRide.com.



ADDITIONAL FEATURES

REVERSE SENSING SYSTEM (IF EQUIPPED)

The Reverse Sensing System (RSS) sounds a tone to warn the driver of obstacles near the rear bumper when R (Reverse) is selected and the vehicle is moving at speeds less than 3 mph (5 km/h). The system is not effective at speeds above 3 mph (5 km/h) and may not detect certain angular or moving objects.

ADVANCETRAC®

This system helps you maintain the stability and steerability of your vehicle on slippery road surfaces such as snow, ice, or gravel. The system works closely with many of the elements already present in the Anti-Lock Braking System. The system defaults to ON. However, should you become stuck, try switching the AdvanceTrac® off.



AUXILIARY INPUT JACK

The Auxiliary Input Jack is located inside the console bin. This allows you to plug and play auxiliary audio devices, including MP3 Players. Press AUX repeatedly on your audio system to access. When LINE IN appears in the display, plug in your auxiliary audio device. For more information, please consult your Owner's Guide.



USB PORT (IF EQUIPPED)

SYNC-equipped vehicles have a USB port inside the center console. This feature allows you to plug in your media playing devices among other options. For more detailed information, please refer to "Using your USB port" in the SYNC Supplement or the SYNC section of the Navigation Supplement.

D (DRIVE) WITH GRADE ASSIST

Overdrive can be deactivated by pressing the transmission control switch on the side of the gearshift lever. This will auto activate a new feature called Grade Assist. Please consult your Owner's Guide for complete details.

SEATING FEATURES

HEATED SEATS (IF EQUIPPED)

Press the heated seat button to cycle through available settings of high heat (2 lights), low heat (1 light), and off (no lights).



REAR HEATED SEATS (IF EQUIPPED)

The heated seat control is located on the back of the front console. To operate the heated seats, push the right side for maximum heat and the left side for minimum heat. Push again to deactivate.

SECOND ROW POWER FOLD AND TUMBLE SEAT (IF EQUIPPED)

Press the control once to fold the seat back down and then tumble the seat forward for access to the 3rd row. **Note:** The power feature is operational when the vehicle is in park and the liftgate has been open for less than 10 minutes.



FRONT PASSENGER FOLD FLAT SEAT BACK

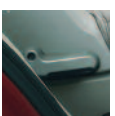
The front passenger seat back can be folded down to a horizontal position to allow room for a long load. Ensure that the seat is in the rearmost position and the head restraint is fully down, prior to pulling the strap located on the back of the seat back.



SEATING

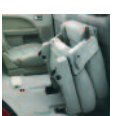
ADJUSTING 2ND ROW BUCKET AND BENCH SEATS

Lift the side handle to adjust the seat back. Using the same control will fold the seat back flat. Lifting the control (if equipped) located underneath the seat cushion will adjust the seat forward or backward.



ACCESSING THE 3RD ROW SEATS

Ensure that the 2nd row seat adjustable head restraints (if equipped) are in the full down position and no objects such as books, purses, or briefcases are on the floor in front of the 2nd row seats before folding them down. Place the front row seat in a forward position to allow the 2nd row seat to be fully "tumbled." Lift the handle once to fold the seat back flat. Lift the same handle a second time to "tumble" the seat forward to allow access to the 3rd row seat.



STOWING THE 3RD ROW BENCH OR SPLIT BENCH SEAT IN TUB

Move the adjustable head restraint (if equipped) fully down. Ensure that the storage tub is clear of objects prior to cycling.



From the rear of the vehicle, fold the seat back by pulling and holding the number 1 strap while pushing the seat back forward. Release the strap after the seat back starts rotating forward.

Release the cushion latches by pulling the number 2 strap while pulling on the long strap located on the seat back, to rotate the seat all the way into the tub in the floor.

AUDIO SYSTEM

Premium/Audiophile In-Dash 6-CD/MP3 Sound System (IF EQUIPPED)

LOAD

Press LOAD to begin the CD load sequence. When the display prompts you to select a slot, use the desired slot to load the CD. Press and hold LOAD to autoloop up to 6 CDs, one at a time, when the display prompts you to load a CD.

Tune/Disc Selector

Press to go up or down the radio frequency band or to select a desired disc. Also use in MENU mode to select various settings.

On/Off/Volume Control

Push to turn ON or OFF. Turn to increase or decrease volume. If the volume is set above a certain level and the ignition is turned off, the volume will come back on at a "nominal" level when the ignition switch is turned back on.

CD

Press to enter CD mode. If a CD is already loaded into the system, the CD will begin playing where it last ended.

Setting the Clock

Press MENU until SELECT HOUR or SELECT MINS is displayed. Use the up/down arrows to adjust the hours/minutes.

Setting Memory Presets

To set a station: Select a frequency band, AM, FM1 or FM2, tune to a station, then press and hold a preset button until the sound returns.

Single Play. Please consult your Owner's Guide for DVD system operation.

AM/FM

Press to select AM or FM frequency bands.

SEEK control

Press to access the next/previous strong station or the next/previous track.

SCAN control

Press for a brief sampling of radio stations or CD tracks. Press again to stop.

MP3 Track/Folder Mode

In Track mode, pressing SEEK will scroll through all tracks on the disc. In Folder mode, pressing SEEK will scroll only through tracks within a selected folder.

Bass/Treble

Press MENU until Bass/Treble settings are displayed. Adjust using the up/down arrows.

Balance/Fade

Press MENU until Balance is displayed. Adjust the audio between the left and right speakers using the up/down arrows. Press MENU again to display Fade. Adjust audio between the front and rear speakers using the up/down arrows.

Setting Memory Presets

To set a station: Select a frequency band, AM, FM1 or FM2, tune to a station, then press and hold a preset button until the sound returns.

CLIMATE CONTROL

Dual Zone Automatic Temperature Control (IF EQUIPPED)

13 Driver and 17 Passenger Side Temperature
Set desired cabin temperature with the blue and red buttons. Press to increase or decrease the temperature on the driver or passenger side of the cabin.

Automatic Operation

Set desired cabin temperature. Then press AUTO for full automatic operation. The system will automatically adjust airflow temperature, front fan speed, airflow direction, A/C, and recirculated air based on the selected temperature to heat or cool the vehicle to the desired temperature as soon as possible.

Rear Defrost

Press to activate or deactivate the rear window defroster.

Defogging/Demisting

Press Defrost to distribute outside air through the windshield defroster vents and demister vents. To reduce humidity build-up in the vehicle, do not drive with the climate control turned off. Also, do not drive with recirculated air selected unless the A/C is operating.

Air Flow Direction Control

Press repeatedly to select desired airflow direction.

A/C

Press to activate or deactivate air conditioning.

Recirculated Air

Recirculation can be engaged manually in any other airflow selection except defrost. It may turn off automatically in all airflow selections.

Heated Seats (IF EQUIPPED)

Press to cycle through available settings of high heat (2 lights), low heat (1 light), and off (no lights).

Dual Control (IF EQUIPPED)

Press DUAL to engage/disengage separate passenger side temperature control. For controls without a DUAL button, press and hold AUTO to engage/disengage separate passenger side temperature control.



Max A/C Operation

Automatic Operation: Press AUTO for full automatic operation. Do not override A/C or recirculated air. Set the temperature to 60°F (16°C).

Override Operation: Select air distribution. Select A/C and recirculated air. Use recirculated air with A/C to provide colder airflow. Set temperature to 60°F (16°C). Set to highest front fan speed initially, then adjust to maintain comfort.

Manual Override Operation

Set desired cabin temperature. Adjust any of the following for personal comfort preferences: front fan speed, airflow direction, A/C, and recirculated air. Front fan speed, A/C, and recirculated air overrides will not turn off the AUTO indicator light. Airflow direction overrides will turn off the AUTO indicator light.



2008 TAURUS X
QUICK REFERENCE GUIDE



"YOUR ADVENTURES ARE ABOUT TO BEGIN."



Use extreme caution when using any device or feature that may take your attention off the road. Your primary responsibility is the safe operation of the vehicle. Only use non-essential features and devices when it is safe to do so.

2008 QUICK REFERENCE GUIDE **TAURUS X**



INSTRUMENT PANEL AND INTERIOR FEATURES

ONE | HEADLAMP CONTROL

Turning the headlamp control clockwise to the first position turns on the parking lamps, instrument panel lamps, license plate lamps, and the tail lamps. Continuing to turn the headlamp control to the second position turns on the headlamps. To use the autolamp light-sensitive, automatic on-off control for the headlamps, turn the headlamp control counterclockwise. If the windshield wipers are turned on for a fixed period of time, the exterior lamps will turn on with the headlamp control in the autolamp position. To turn autolamps off, turn the control clockwise to the O (OFF) position. To activate the high beams, simply pull the turn signal lever towards you to the second detent. Pull the lever towards you again to deactivate them. Use the same lever to activate the "Flash to Pass" feature. Pull the lever towards you to the first detent to activate and release it to deactivate.



TWO | FOGLAMP CONTROL

With the ignition on, the foglamps can be turned on when the headlamp control is in the parking lamp, headlamp, or autolamp position, and the high beams are not on. Simply pull the headlamp control towards you to turn on the foglamps. The foglamp indicator light will illuminate. The foglamps will not operate when the high beams are activated.



THREE | PANEL DIMMER

Use this control to adjust the brightness of the instrument panel and all applicable switches in the vehicle during headlamp and parking lamp operation. Move the control to the full upright position, past the detent, to turn on the interior lamps.



FOUR | HOOD RELEASE

To open the hood, pull the hood release handle under the bottom of the instrument panel, near the steering column. Go to the front of the vehicle and release the auxiliary latch located under the front center of the hood. Use the prop rod to support the raised hood.



FIVE | SPEED CONTROL

For your speed control to work, you must press and release the ON button. Pressing and releasing the OFF button disengages the system and turns it off. To set a desired speed, press the ON button, accelerate to the desired speed, press and release the SET+ button, then take your foot off the accelerator pedal. You can increase speed using speed control



by pressing and releasing the SET+ button until you reach the desired speed, increasing speed by 1 mph (1.6 km/h) with each tap. You can decrease speed in the same way using the SET- button. Pressing the RSM (resume) button will automatically return the vehicle to the previously set speed. To disengage the speed control, press the OFF or CNCL button or press the brake.

SIX | TILT STEERING COLUMN


To adjust the steering wheel, push the adjustment lever down to unlock the steering column. While the lever is down, tilt the steering column to your desired position. While holding the steering column in place, pull the lever up to its original position to lock the steering column. Do not adjust while driving.



SEVEN | STEERING WHEEL AUDIO CONTROLS (IF EQUIPPED)

A. Audio Steering Wheel Controls: These controls allow you to adjust the radio and CD features from the steering wheel. Press MEDIA to select AM, FM1, FM2 or CD. Press SEEK to access the next/previous strong station or track on a CD. Press VOL +/- to adjust volume and MUTE to mute the volume.



B. Navigation Steering Wheel Controls (if equipped): Press  to access and use voice commands through your navigation system and SYNC (if equipped). For more information, please refer to your Navigation Supplement.



C. SYNC Steering Wheel Controls (if equipped): Press  to access and use SYNC's voice recognition system. Press OK to confirm a selection in SYNC mode. Press  to access SYNC's hands-free calling features. Press MENU when in SYNC mode to access the previous (-) or next (+) menu item. For more information, please refer to your SYNC Supplement.



EIGHT | WINDSHIELD WIPER / WASHER

The multi-function lever controls the windshield wiper modes, speeds and the windshield washer. Rotate the end of the control away from you to increase the speed of the wipers. Rotate the control towards you to decrease the speed of the wipers. For windshield washer control, push the end of the stalk briefly. With a quick push and hold, the wipers will swipe three times with washer fluid. With a long push and hold, the wipers and washer fluid will activate for up to ten seconds.



NINE | THROTTLE CONTROL / TRANSMISSION LAMP

The throttle control / transmission lamp illuminates when a powertrain fault or an AWD fault (if equipped) has been detected. Contact your dealer as soon as possible.

TEN | MESSAGE CENTER

With the ignition in the RUN position, the message center displays important vehicle information by constantly monitoring vehicle systems. You may select display features on the message center for a display of status, preceded by a brief indicator chime. The system will also notify you of potential vehicle problems with a display of system warnings. For more detailed information, please consult your Owner's Guide.

ELEVEN | SPEED CONTROL LAMP

The speed control lamp will illuminate when the speed control is engaged. It will turn off when the speed control system is disengaged. The controls for the speed control are located on the steering wheel. Press and release the

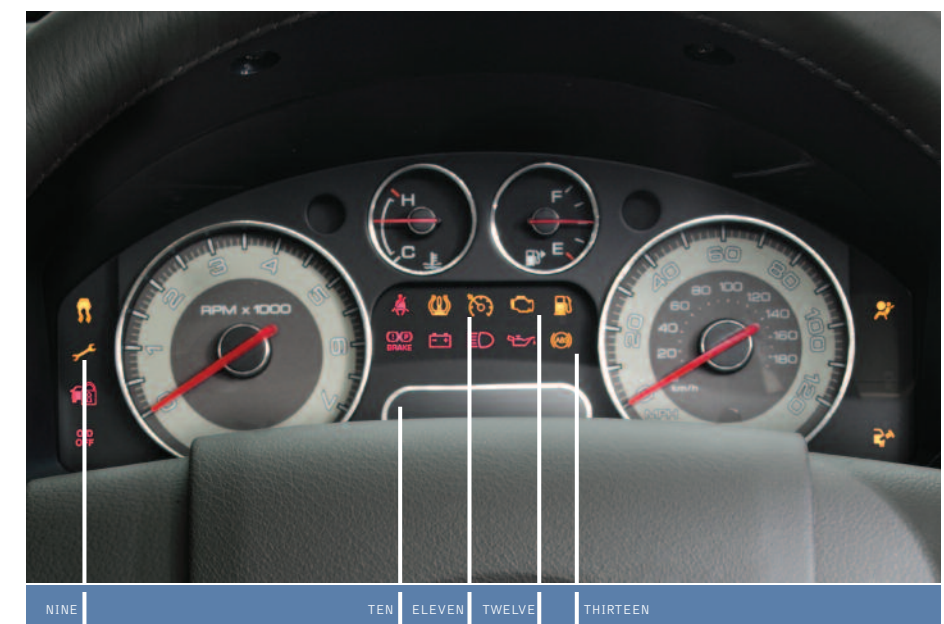
ON and OFF buttons to engage and disengage the system. For more information, please consult your Owner's Guide.

TWELVE | SERVICE ENGINE SOON

The service engine soon indicator lamp illuminates when the ignition is first turned to the RUN position to check the bulb. If the lamp stays on or blinks, the On Board Diagnostics System has detected a malfunction. Drive in a moderate fashion (avoid heavy acceleration or deceleration) and have your vehicle serviced immediately.

THIRTEEN | ABS WARNING LAMP

In an emergency, apply continuous force to the brake pedal. Do not pump the brakes. Any pulsation or mechanical noise you may feel or hear is normal. If the lamp stays on or continues to flash, have your vehicle serviced. Normal braking is still functional unless the brake warning lamp is also illuminated.




ESSENTIAL INFORMATION

LOCATION OF SPARE TIRE AND TOOLS

Your vehicle is equipped with a temporary spare tire, which is smaller than a regular tire, and designed for emergency use only. The jack, spare tire, jack handle, and lug nut wrench are under the carpeted floor panel in the rear of the vehicle. If the 3rd row seat is stowed in the floor, you will need to unstow it to access the spare tire and jack.

TIRE PRESSURE

Safe operation of your Taurus X requires that your tires be properly inflated. The Ford recommended inflation pressure is found on the Tire Label or the Certification Label located near the front door latch on the driver's side. At least once a month and before long trips, inspect each tire and check the air pressure with a digital or dial-type tire gauge. Don't forget the spare. Air pressure should be checked when the tires are cold. Inflate all tires to the inflation pressure recommended by Ford Motor Company. As an added safety feature, your vehicle has been equipped with a tire pressure monitoring system (TPMS) that illuminates a low tire pressure warning light  when one or more of your tires is significantly under-inflated.

FUSES

If your electrical components are not working properly, a fuse may have blown. Please consult your Owner's Guide.

FUEL PUMP SHUT-OFF SWITCH

This device stops the electric fuel pump from sending fuel to the engine when your vehicle has had a substantial jolt. After an accident, if the engine cranks but does not start, this switch may have been activated. The fuel pump shut-off switch is located in the front passenger footwell area in the right upper corner. For switch reset instructions, please consult your Owner's Guide.

ROADSIDE ASSISTANCE

In addition to your New Vehicle Limited Warranty, Ford provides new vehicle owners with a complimentary roadside assistance program. It covers changing a flat tire, jump starts, limited fuel delivery, lock-out assistance, winch out, and towing of your vehicle.
United States (800) 241-3673 Canada (800) 665-2006

UNLEADED FUEL RECOMMENDATIONS

For optimum performance, use "Regular" unleaded fuel with a pump (R+M)/2 octane rating of at least 87. We do not recommend the use of gasolines labeled "Regular" with octane ratings of 86 or lower that are sold in high altitude areas.

REAR WINDOW BUFFETING

When one or both of your rear windows are fully open you may experience a wind throb or buffeting noise. This is common among all vehicles and can be eliminated simply by lowering a front window two to three inches.

Free Manuals Download Website

<http://myh66.com>

<http://usermanuals.us>

<http://www.somanuals.com>

<http://www.4manuals.cc>

<http://www.manual-lib.com>

<http://www.404manual.com>

<http://www.luxmanual.com>

<http://aubethermostatmanual.com>

Golf course search by state

<http://golfingnear.com>

Email search by domain

<http://emailbydomain.com>

Auto manuals search

<http://auto.somanuals.com>

TV manuals search

<http://tv.somanuals.com>