

F-SERIES SUPER DUTY®

2009



Ready, Willing & Able

Canada's most capable pickup.¹



LEFT: F-350 FX4 Crew Cab • Black
CENTRE: F-450 LARIAT Crew Cab 4x4 • Black
RIGHT: F-250 XLT Crew Cab 4x4 • Red

Vehicles throughout may be shown with optional and aftermarket equipment.
See Specifications for Footnotes & Disclaimers.

PUT ONE TO WORK FOR YOU. Its muscular sheet metal wraps around an incredibly strong structure, and its stance alerts you to the huge capabilities on tap. Climb into the cab and experience comfort that changed the world of heavy-duty pickups. For best-in-class¹ towing and hauling, choose the mighty 6.4L Power Stroke[®] V8. Plus, no other truck in the class offers so many innovations to make your work easier. Put together these impressive assets and you have Canada's most capable pickup, a Built Ford Tough[®] truck that's ready for whatever you throw at it: F-Series Super Duty.[®]

2009 SUPER DUTY

- 24,600 lbs. (11,158 kg) 5th-Wheel Towing²
- 16,000 lbs. (7257 kg) Conventional Towing²
- 6190 lbs. (2808 kg) Payload²
- 14,500 lbs. (6577 kg) GVWR²
- 33,000 lbs. (14,969 kg) GCWR²
- 6000 lbs. (2722 kg) Front GAWR²
- F-450 Pickup
- PowerScope™ Power-Telescoping/-Folding Trailer Tow Mirrors Available
- Tailgate Step Option
- Stowable Bed Extender Option
- Rapid-Heat Supplemental Cab Heater Option
- Quiet Steel[®] in Dash Panel
- Standard Box-Rail Mouldings
- Upfitter Switches Option
- Standard Built Ford Tough[®] Hitch Receivers on All Models
- 6.4L Power Stroke V8 Turbo Diesel Available
- Outstanding Gas Horsepower & Torque with 6.8L 3-Valve V10

BEST-IN-CLASS CAPABILITY FROM CANADA'S BEST-SELLING LINE OF PICKUP TRUCKS FOR 42 YEARS:³ FORD F-SERIES

Carry That Weight

Super Duty® handles it with ease.

**BEST TOWING
CAPACITY¹**

**24,600 lbs²
11,158 kg²**

These pickups are on a mission: to effortlessly haul the biggest payloads and tow the heaviest trailers while maintaining optimum control. A full suite of class-exclusive technologies is offered specifically to assist you in these tasks. Plus, a full range of models allows you to tailor the capability of your Super Duty to suit your needs.



Tough Components

Every Super Duty pickup has a standard Built Ford Tough® hitch receiver that is matched to the truck's capabilities. Drawbars and accessories are not included.



F-350 LARIAT Crew Cab 4x2 • Black/Brilliant Silver Two-Tone
• Other available equipment

Advanced Systems

The integrated Trailer Brake Controller⁴ (left) uses braking input, vehicle speed and ABS logic to balance the performance of the truck brakes and electric trailer brakes.⁵ The available TorqShift® automatic has a selectable Tow/Haul Mode that chooses and maintains optimum gearing under heavy load, and uses engine braking to reduce vehicle speed on downhill grades.

Towing Tech

FACTORY-INTEGRATED SOLUTIONS

These optional factory-installed systems are designed to help keep you in control of your Super Duty and trailer when towing. The first fully integrated Trailer Brake Controller (TBC) in the class has been improved **1** and integrates with the ABS **2**, the TorqShift automatic transmission with Tow/Haul Mode **3**, and the available telescoping trailer tow mirrors **4**. When activated, these components work together to make towing seem effortless. Developed and refined for years, these are the most experienced factory-installed towing systems available on a heavy-duty pickup.

Work Smart

Super Duty® is driven by innovation.

From the first factory-developed integrated Trailer Brake Controller to the features you see here, Ford is well known for listening to our customers and delivering useful technologies that you won't find on any other heavy-duty pickup. Our long list of specialized options lets you order the Super Duty that's just right for you.

Warmth Right When You Need It

To beat the winter cold, the Rapid-Heat Supplemental Cab Heater (not shown) speeds up defrosting and heats the cabin to a comfortable level in just minutes. Optional with the 6.4L Power Stroke® and automatic transmission only.



Keep an Eye on Things

Standard on FX4 and LARIAT, PowerScope™ trailer tow mirrors adjust, fold and telescope up to 2.75 in. (70 mm) at the touch of a switch. They include heated glass, integrated turn signals, and clearance lamps. Their large viewing area gives you a clear rear view, inspiring confidence whether you're towing or not.



F-450 KING RANCH® Crew Cab 4x4 • Forest Green/Pueblo Gold Two-Tone
• Other available equipment

Stepping Up

The available, class-exclusive Tailgate Step stows right into the tailgate. Just hold on to the flip-up grab bar, lower the skid-resistant step, and it's easy access into the box.

Extended Ability

For longer loads, this available stowable bed extender lets you haul with the tailgate down. The 21-in.- (53-cm-) tall barrier also secures smaller loads with the tailgate up. When not in use, it folds up and stows neatly out of the way, giving you full access to the bed.



A Comfortable Fit

You could get used to this.

SYNC
Powered by Microsoft

SIRIUS
SATellite RADIO

Super Duty® didn't just rewrite the rules for capability, but for comfort as well. Top-quality materials and refinement pay off for the driver and passengers alike. Still, this hardworking interior stays true to its Built Ford Tough® roots. Gear rings around the air vents, and rugged panel stampings, mark an industrial theme. Smart storage is everywhere — a standard dash-top tray is a handy place to keep a notepad, and the available centre console is deep enough to hold a laptop. For work or for pleasure, Super Duty is one comfortable place to spend some time.

Complete Connectivity

Ford SYNC® powered by Microsoft® is a groundbreaking voice-activated communications and entertainment system, now standard on the 2009 Super Duty LARIAT and optional on FX4 and XLT. Simple voice commands let you control most Bluetooth®-enabled mobile phones and portable digital music players.⁵

Time to Get SIRIUS

Lock on to your favourite channel wherever you drive with SIRIUS® Satellite Radio⁷ and its up to 120 digital-quality channels of sports, personalities, news and 100% commercial-free music. It includes a 6-month prepaid subscription with free online listening. Standard on LARIAT and FX4, and available on XLT.

- 1 MP3 CAPABILITY AND AUXILIARY INPUT:** All CD audio systems are MP3 capable and feature an auxiliary audio input jack for any compatible MP3 player.
- 2 DVD ENTERTAINMENT SYSTEM:** Available DVD, rear-seat system allows access to movies, games and music. Two sets of wireless headphones are included.
- 3 CENTRE CONSOLE** comes with the optional captain's chairs. It's large enough to hold a laptop, has one power point inside, and on SuperCab and CrewCab models, has an additional power point on the back of the console.



FX4 Crew Cab features silver vents with chrome rings and other unique interior accents. Optional luxury captain's chairs with leather trim and contrasting stitching, and optional equipment.



Find Your Way With Ease

An available Navigation System maps routes anywhere in Canada⁸ and guides you with audible instructions. You can even watch DVDs when in "Park." It includes an in-dash touch screen, a single-CD/DVD player with MP3 capability, AM/FM stereo, USB port, voice-activated controls, digital clock, and 8 speakers with a subwoofer.



Able-Bodied

6.4L Power Stroke® V8 Turbo Diesel.

Here is the most powerful Ford diesel pickup powerplant ever offered, with 100% of its 650 lb.-ft. of torque available at just 2000 rpm.⁹ Cutting-edge fuel injection helps deliver optimal fuel efficiency and outstanding cold-start capability.

The Power Stroke fuel and engine controls are integrated into one rugged cast-aluminum housing, enabling robust operation of the state-of-the-art engine technologies. Ford Clean Diesel Technology™ helps reduce emissions to levels on par with equivalent gasoline engines.

Power Stroke at a Glance

- ★ UP TO 350 HP @ 3000 RPM AND UP TO 650 LB.-FT. OF TORQUE @ 2000 RPM⁹
- ★ HIGH-PRESSURE COMMON-RAIL FUEL INJECTION
- ★ MICRO-PRESSURE PIEZO-ELECTRIC INJECTORS
- ★ QUICK COLD START DOWN TO -29°C (-20°F)
- ★ THE QUIETEST FORD DIESEL PICKUP ON THE ROAD



Giving You a Boost

Flatten any mountain pass with the dual sequential turbocharging system. The high-pressure Electronic Variable Response Turbo (EVRT®) **1** spools up first to provide fast transient engine response. The larger low-pressure turbo **2** provides added airflow at peak power and torque. You can expect seamless performance from one end of the tachometer to the other.



POWDER-FORGED CONNECTING RODS

This process delivers outstanding strength and dimensional accuracy for high durability and smooth performance.

BIG CRANKSHAFT

The backbone of the engine is a strong, precise Power Stroke crank that is designed to handle massive diesel horsepower and torque.

CAST-IRON BLOCK, HEADS AND BEDPLATE

Proven architecture that stands up to the combustion forces of peak diesel operation and helps dampen noise and vibration.

HEAVY-DUTY ALTERNATORS

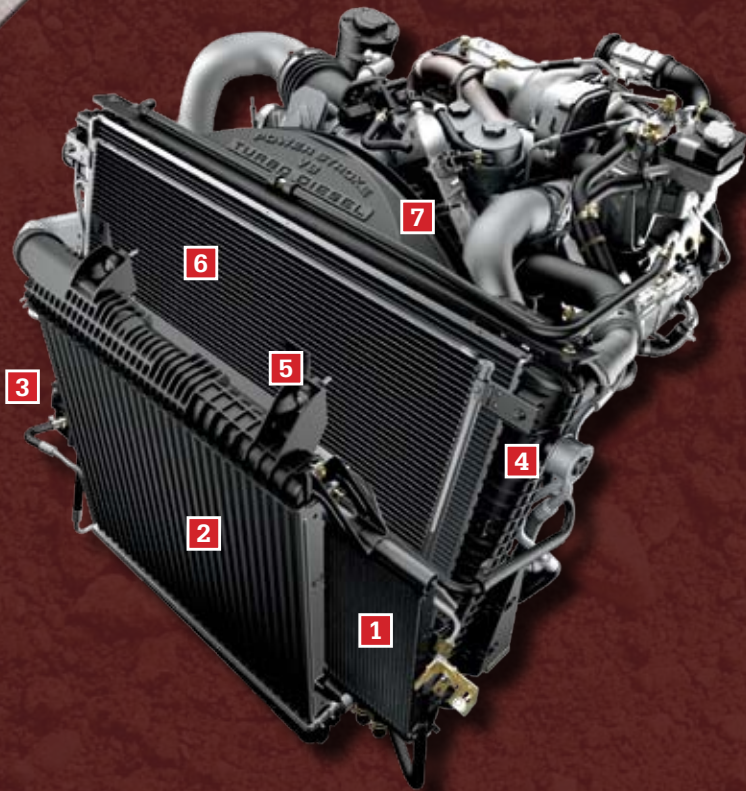
A 135-amp alternator is standard with the Power Stroke. A 200-amp alternator or dual alternators that crank out a combined 320 amps are available.

MAINTENANCE

Power Stroke oil changes are recommended at 16,000 km, while fuel filters are designed to last up to 32,000 km under normal service conditions. The closed crankcase breather requires no service. See the Owner's Guide for complete service details.

The TorqShift® 5-speed automatic is Ford's toughest transmission. Its selectable Tow/Haul Mode adjusts its operation to match towing and hauling demand. This reduces gear hunting, helps improve power delivery, and engages engine braking to help control vehicle speed when descending hills. The TorqShift is available on any Super Duty.®





- 1** Fuel Heat Exchanger
- 2** Charged Air Cooler
- 3** Transmission Cooler
- 4** Large Engine Radiator

- 5** Power Steering Cooler
- 6** Air Conditioning Condenser
- 7** Engine-Mounted Fan Shroud

Comprehensive Cooling

This system also cools F-550 Super Duty.[®] The large radiator and the water pump flow rate ensure efficient cooling. There are 6 different radiators (coolers) — including one for the fuel-cooling system — designed to support engine emissions and enhance durability, power and torque. An engine-mounted fan shroud improves air-flow efficiency, resulting in an overall cooling system that is capable and reliable.

Ford Clean Diesel Technology

HIGH-PRESSURE COMMON-RAIL FUEL INJECTION

Fuel pressurized to 1930 bar (28,000 psi) travels through a common rail and into state-of-the-art piezo-electric injectors that deliver multiple precision fuel injections for a smooth, clean burn, low diesel clatter, superb cold-start capability and reduced emissions.

OIL-JET PISTON COOLING

Cooling jets of oil spray inside the pistons to optimize ring life for long-term durability, and help reduce combustion temperatures to control emissions.

EXHAUST GAS RECIRCULATION (EGR)

The EGR system pumps burned gases through 2 coolers to re-enter the air system at the **HIGH-TORQUE EGR VALVE**. These cooled gases, along with intercooled combustion air and oil-jet piston cooling, help lower combustion temperature. This helps inhibit the formation of nitrogen oxides (NOx).

ULTRA-LOW-SULFUR DIESEL FUEL (ULSD), B5 FUEL, AND CJ-4 ENGINE OIL

The Power Stroke runs only on ULSD, the standard for North American diesel fuel. It also supports B5, which is made by blending 95% ULSD with 5% BioDiesel. CJ-4 engine oil must be used for proper lubrication and emissions system operation.



DIESEL OXIDATION CATALYST AND DIESEL PARTICULATE FILTER

A rugged stainless steel housing contains the **DIESEL OXIDATION CATALYST (DOC)** and the **DIESEL PARTICULATE FILTER (DPF)**. Up front, the DOC reduces hydrocarbons in the exhaust and generates heat for the DPF. Next, the DPF traps particulates in its silicon carbide wall-flow catalyst. The system reduces particulate matter (soot) emissions to levels on par with a gasoline engine of similar size and power. The DOC/DPF is self-diagnostic and self-cleaning, automatically performing a regeneration/clean cycle when needed.

Proven Gas Power

A rugged 5.4L V8 or 6.8L V10 gasoline powerplant (shown right) with manual or automatic transmission is also available on F-250 and F-350.



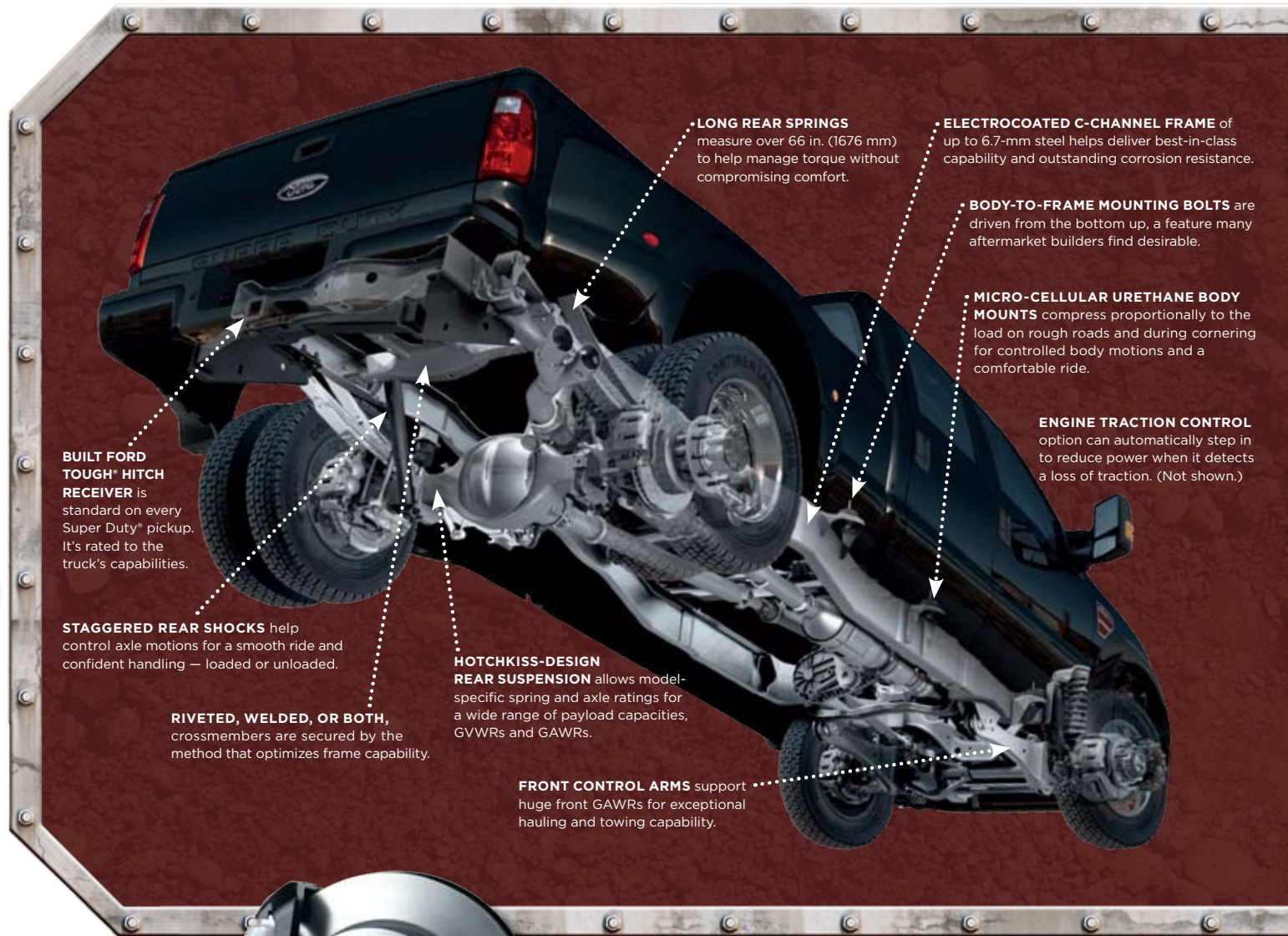
Massive Muscle

Ford tough from the ground up.

Class-leading capability begins with a rock-solid foundation. Thick frame rails join rugged crossmembers to construct a rigid frame. Robust suspensions and axles handle the heaviest loads. Braking is firm and predictable, stop after stop, while ride and handling reach high levels of comfort and confidence. Super Duty is built to lead the way in capability, and to offer a superb driving experience.



- 1 HIGH-STRENGTH FRONT-END STRUCTURE:** Super Duty uses all high-strength steel (approximately 2 times stronger than regular steel) in its rugged, hydroformed front-end structure.
- 2 FULLY BOXED FRONT FRAME RAILS:** Extra-rigid structures provide added strength for front-suspension mounts and for upfits such as snow plows.
- 3 FRONT DROP HORNS:** Allow the front bumper to sit lower for compatibility with car bumpers.
- 4 STANDARD FRONT TOW HOOKS:** The closed-loop design has been tested to 125% of the heaviest GVWR with just one hook.
- 5 TWIN-COIL MONOBEAM FRONT SUSPENSION:** Standard on all 4x4 models and on F-450 4x2, it allows a wide range of GAWRs. Front Twin I-Beams give F-250 and F-350 4x2 models the toughness of solid I-beams with the handling and comfort of an independent suspension.



BUILT FORD TOUGH™ HITCH RECEIVER is standard on every Super Duty™ pickup. It's rated to the truck's capabilities.

STAGGERED REAR SHOCKS help control axle motions for a smooth ride and confident handling — loaded or unloaded.

RIVETED, WELDED, OR BOTH, crossmembers are secured by the method that optimizes frame capability.

HOTCHKISS-DESIGN REAR SUSPENSION allows model-specific spring and axle ratings for a wide range of payload capacities, GVWRs and GAWRs.

FRONT CONTROL ARMS support huge front GAWRs for exceptional hauling and towing capability.

LONG REAR SPRINGS measure over 66 in. (1676 mm) to help manage torque without compromising comfort.

ELECTROCOATED C-CHANNEL FRAME of up to 6.7-mm steel helps deliver best-in-class capability and outstanding corrosion resistance.

BODY-TO-FRAME MOUNTING BOLTS are driven from the bottom up, a feature many aftermarket builders find desirable.

MICRO-CELLULAR URETHANE BODY MOUNTS compress proportionally to the load on rough roads and during cornering for controlled body motions and a comfortable ride.

ENGINE TRACTION CONTROL option can automatically step in to reduce power when it detects a loss of traction. (Not shown.)



Outstanding Braking

No truck is complete without great brakes. Super Duty's standard 4-wheel Anti-lock Brake System (ABS) is up to the task. Huge vented rotors and dual-piston calipers deliver confident stopping power, even when hauling the heaviest of payloads or trailers.

Tough Trio

XL, XLT and FX4 reporting for duty.

3 hardworking trucks, 3 unique personalities: XL is the work truck that gets the job done and always comes back for more; XLT takes comfort and convenience to an entirely new level; and FX4 is the off-road king with a style all its own.



Room for the Crew

XLT Crew Cab with optional cloth captain's chairs with centre console and a standard, versatile FlexFold™ 60/40 split rear seat.



F-350 XLT Crew Cab 4x4 • Sterling Grey
• Other available equipment

F-250 FX4 Crew Cab 4x4 • Red
• Other available equipment



F-250 XL Regular Cab 4x2 • Oxford White

XL Here is the bedrock of the line. It includes the heavy-duty features that make Super Duty® trucks so impressive, and it can be equipped to move the heaviest loads. When you're looking for a work truck with all the capabilities, plus standard features that can get you comfortably through the work week, look no further than Super Duty XL.

XLT You'll enjoy a hefty list of standard features while listening to the AM/FM stereo/single-CD player with MP3 capability and an auxiliary audio input. A chrome grille and chrome bumpers dress up the exterior. For added personal space, choose the cloth luxury captain's chairs with centre console.

FX4 Equipped with a 4x4 drivetrain, limited-slip rear differential, Rancho®-branded off-road shocks, plus a transfer case and fuel tank skid plates, FX4 begs you to take it off the beaten path. A handsome interior lets you ride in style and comfort, on-road or off.

One of Life's Rewards

Impressive features are standard.



F-350 LARIAT Crew Cab 4x4 • Black • Other available equipment

LARIAT

Tow and haul just about anything to just about anywhere in a truck that surrounds you with leather-trimmed seating, power conveniences and a 6-disc in-dash CD changer. LARIAT is the perfect marriage of hard work and luxury, with legions of satisfied owners who consider it their reward for jobs well done.




Tall in the Saddle

Crafted in the proud tradition of the West.



F-450 KING RANCH Crew Cab 4x4 • Forest Green/Pueblo Gold Two-Tone
• Other available equipment

KING RANCH

This top-of-the-line Super Duty® wears the legendary "Running " brand. Its exterior appointments, which include forged painted-aluminum wheels (SRW only) with KING RANCH® centre caps, two-tone paint with Pueblo Gold lower accents, and KING RANCH® badges, mark the look of a thoroughbred. Inside, you're surrounded by the finest accommodations: captain's chairs trimmed with rich Chaparral leather, a full complement of memory power accessories, and a KING RANCH® insignia on each seatback to provide the finishing touch.



Accessories

- All-weather floor mats
- Ambient Lighting
- Ashcup/coin holder/Smoker's Pack
- Bed extender
- Bed mat
- Bed rail protector
- Bed rug
- Bedliner
- Bi-directional remote start system
- Chrome bug deflector
- Electrochromic mirrors
- Exhaust tip
- Ford SYNC®
- Hard folding tonneau cover
- Premium carpeted floor mats
- Retractable bed hooks
- Side window deflectors
- Soft folding tonneau cover¹
- Soft snapless tonneau cover¹
- Splash guards
- Trailer hitch balls/draw bars
- Trailer tow mirrors
- Tubular step bars
- Vehicle security system
- Wheel covers
- Wheel locks

¹Ford Licensed Accessories.



Bedliner



Trailer hitch draw bars



Splash guards



All-weather floor mats



Soft folding tonneau cover



Chrome bug deflector



Ford of Canada warrants that its authorized Dealers will repair or replace any Genuine Ford Accessory that is properly installed by the authorized Dealer that sold the accessory and found to be defective in factory-supplied materials or workmanship. The accessory will be warranted for whichever provides you the greatest benefit: 12 months/20,000 km (whichever occurs first), or the remainder of your 36-month/60,000-km (whichever occurs first) Basic Coverage in the New Vehicle Limited Warranty. Contact your local Ford of Canada Dealer for details.

Ford Licensed Accessories (FLA) are warranted by the accessory manufacturer's limited warranty. The warranty coverage will vary by accessory manufacturer. Contact your local Ford of Canada Dealer for details regarding the accessory manufacturer's limited warranty and/or for a copy of the FLA product limited warranty offered by the accessory manufacturer.

Ford ESP PremiumCare Plan. Depending on the Ford ESP Plan you select, some Dealer-installed Genuine Ford Accessories can be covered up to 7 years or 150,000 km. See your Ford of Canada Dealer for details.



Trailer tow mirrors



Retractable bed hooks



Bi-directional remote start system



Bed extender



Tubular step bars

Specifications

Model-Specific Features

Each series includes the standard equipment of the previous series, except where additions/exceptions are noted. Vehicles shown may contain optional equipment.



XL

4-wheel Anti-lock Brake System (ABS) • Stationary Elevated Idle Control (SEIC)² • Built Ford Tough[®] trailer hitch receiver, 7-pin wiring harness with relays and 7-/4-pin connector • Black-painted bumpers • Black grille • Front fender vents • Solar-tinted glass • Black door and tailgate handles • Sealed-beam halogen headlamps • Black telescoping manual fold-away trailer tow sideview mirrors • Quick-release tailgate with Tailgate Assist[™] • Front tow hooks • 17-in. argent-painted steel wheels (F-250/F-350), 19.5-in. forged polished-aluminum wheels (F-450) • Fixed rear window • Manual air conditioning • Black instrument cluster with Black gauges and White graphics • Message centre • AM/FM stereo with digital clock and 2 speakers • Black full-length vinyl floor covering • Heavy-duty vinyl reclining front seat • Black urethane steering wheel • Sun visors with passenger mirror • Day/night rearview mirror • SecuriLock[®] passive anti-theft engine immobilizer system



XLT

Chrome-steel bumpers • Chrome grille with Medium Platinum insert • Dual-beam jewel-effect headlamps • Underhood service lamp • Black telescoping manual fold-away heated trailer tow sideview mirrors with power glass • Privacy glass • 17-in. chrome-clad steel wheels (F-250), 18-in. chrome-clad steel wheels (F-350 SRW), 17-in. argent-painted steel wheels (F-350 DRW) • Black air vents with chrome rings • AM/FM stereo with single-CD/MP3 player and 4 speakers • SIRIUS Satellite Radio • Auxiliary audio input jack • Cruise control • Colour-coordinated carpeting • Colour-coordinated carpeted floor mats • Power front windows (includes rear windows on Crew Cab), door locks and accessory delay • Cloth 40/20/40 split front seat with centre armrest, cupholders and storage • Driver and passenger-side lumbar support • Black tilt urethane steering wheel



FX4

4x4 drivetrain • Limited-slip rear axle¹⁴ • Rancho[®]-branded shocks¹⁴ • Transfer case and fuel tank skid plates¹⁴ • Dark Shadow Grey bumpers • Fog lamps • Body-colour grille surround with billet-style Medium Platinum insert • Body-colour door handles • Dark Shadow Grey wheel-lip mouldings • 18-in. premium chrome-clad steel wheels with bright centre caps (F-250/F-350 SRW), 17-in. forged polished-aluminum wheels (F-350 DRW) • Metallic-faced instrument cluster with chrome-ringed gauges • Silver-metallic air vents with chrome rings¹⁴ • PowerScope[™] trailer tow mirrors • Black carpeting with all-weather floor mats • Unique metallic-patterned instrument panel appliqué • Unique cloth 40/20/40 split front seats • Black tilt leather-wrapped steering wheel • Advanced Security Group (includes autolamp, autolock, illuminated-entry system, remote keyless-entry system and driver-door keypad) • Sun visors with driver and passenger mirrors • Overhead console with sunglasses and garage door opener storage • Reverse Vehicle Aid Sensor



LARIAT

Chrome-steel bumpers • Black moulded cab steps • Chrome grille with accent colour insert • Black door handles • 18-in. premium forged polished-aluminum wheels with bright centre caps (F-250/F-350 SRW) • TorqShift[®] 5-speed automatic transmission • Power-sliding rear window • Dual-zone Electronic Automatic Temperature Control • Colour-coordinated carpeted floor mats • Woodgrain-style instrument panel insert • Metallic-faced instrument cluster with cream gauges • Enhanced message centre with trip computer • Auto-dimming rearview mirror • Power driver and front-passenger seats • Driver Memory Seating System (includes memory seat, mirror and pedals) • Premium leather-trimmed 40/20/40 split front seat with centre armrest, cupholders and storage • Heated front seats • Colour-coordinated leather-wrapped steering wheel with secondary audio controls • AM/FM stereo/6-disc in-dash CD changer with MP3 capability, clock and 4 speakers • Ford SYNC[®] • Sun visors with illuminated mirrors • Universal Garage Door Opener



Specifications

At a Glance

F-250

MAXIMUM CAPABILITIES:² lbs. (kg)

- 16,500 (7484) 5th-Wheel Towing; 12,500 (5670) Conventional Towing
- 3220 (1461) Payload
- 23,000 (10,433) GCWR; 10,000 (4536) GVWR
- Engines: 5.4L V8; 6.8L V10; 6.4L Power Stroke® V8 Turbo Diesel
- Drivelines: 4x2 or 4x4; Single Rear Wheel (SRW) only
- Bodies: Regular Cab, SuperCab, Crew Cab
- Cargo Box: 6.75 ft. (2057 mm) or 8 ft. (2438 mm)
- Trim Series: XL, XLT, FX4, LARIAT

F-350

MAXIMUM CAPABILITIES:² lbs. (kg)

- 18,800 (8528) 5th-Wheel Towing; 15,000 (6804) Conventional Towing
- 5730 (2599) Payload
- 26,000 (11,793) GCWR; 13,000 (5897) GVWR
- Engines: 5.4L V8; 6.8L V10; 6.4L Power Stroke V8 Turbo Diesel
- Drivelines: 4x2 or 4x4; SRW and Dual Rear Wheel (DRW)
- Bodies: Regular Cab, SuperCab, Crew Cab
- Cargo Box: 6.75 ft. (2057 mm) or 8 ft. (2438 mm)
- Trim Series: XL, XLT, FX4, LARIAT

F-450

MAXIMUM CAPABILITIES:² lbs. (kg)

- 24,600 (11,158) 5th-Wheel Towing; 16,000 (7257) Conventional Towing
- 6190 (2808) Payload
- 33,000 (14,969) GCWR; 14,500 (6577) GVWR; 6000 (2722) front GAWR
- Engine: 6.4L Power Stroke V8 Turbo Diesel only
- Drivelines: 4x2 or 4x4 DRW only
- Body: Crew Cab with 8-ft. (2438-mm) cargo box only
- Trim Series: XL, XLT, LARIAT

Standard Features

Safety/Security

4-wheel power disc brakes with Anti-lock Brake System (ABS)
Airbags¹⁰ – Driver and right-front passenger
Alert chimes – Headlamps-on, key-in-ignition and door ajar
Belt-Minder® front safety belt reminder
Brake/shift interlock (with automatic transmission)
Child-safety seat top tether anchors (Regular Cab front passenger and all rear seating positions)
Fuel pump inertia shutoff switch
Height-adjustable safety belts – Front-outboard
Locking tailgate
Passenger airbag¹⁰ deactivation switch (Regular Cab, SuperCab)
Safety belt energy-management retractors – Front-outboard positions
SecuriLock® passive anti-theft engine immobilizer system
Side-intrusion door beams
SOS Post-Crash Alert System¹¹

Mechanical

5.4L 3-valve SOHC V8 engine (F-250, F-350)
6.4L OHV 32-valve Power Stroke V8 Turbo Diesel engine (F-450)
6-speed manual overdrive transmission
Battery saver
Engine block heater
Fail-safe engine cooling system (gas engines)
Fuel tank – 113.5-litre capacity with 6.75-ft. box, 143-litre capacity with 8-ft. box
Power steering
Quick-release tailgate with Tailgate Assist™
Spare tire/wheel/jack with lock – Conventional with underframe carrier (crank-down type)
Stabilizer bar – Front
Stabilizer bar – Rear (DRW only)
Stainless steel exhaust system (major components)
Stationary Elevated Idle Control (SEIC)¹²
Steering damper
Styleside box – 6.75-ft. SRW/DRW and 8-ft. SRW/DRW¹³

Interior

Air conditioning
Assist and ride handles
Coat hooks – 1 (Regular Cab), 2 in rear of cab (SuperCab and Crew Cab)
Dome light (front and rear with Crew Cab)
Integrated Trailer Brake Controller (TBC)⁵ (F-450)
Flip-open rear quarter windows (SuperCab)
Message centre with odometer, trip odometer, engine-hour meter and warning messages
Power points – 2 on instrument panel
Steering wheel – Black urethane

Exterior

Bumpers – Front and rear step
Cargo box – Partitionable and stackable
Cargo box lamp – Integrated with centre high-mounted stop lamp
Cargo box rail and tailgate top mouldings
Cargo box stake pockets
Cargo tie-down hooks – 4 in 6.75-ft. box, 6 in 8-ft. box
Solar-tinted glass
Tow hooks – 2 in front
Trailer hitch receiver – 12.5K 51-mm (2-in.)
Built Ford Tough® (SRW/F-350 DRW 5.4L)
Trailer hitch receiver – 15K 64-mm (2.5-in.)
Built Ford Tough (F-350 DRW 6.8L/6.4L only)
Trailer hitch receiver – 16K 64-mm (2.5-in.)
Built Ford Tough (F-450 only)
Trailer tow – 7-wire harness with relays;
7-/4-way connector
Windshield wipers – Intermittent

Specifications

Features & Options Continued

	XL	XLT	FX4 (F-250/F-350 only)	LARIAT
Exterior (continued)				
○ ○ ○ ●				
— ① — —				
— ○ ○ ○				
— ○ ● ●				
● — — —				
○ ● ● ●				
① ● ● ●				
● — — —				
① ● ● ●				
① ● — —				
— ① ● ●				
— — ○ ○				
① ① — —				
— ● ● ●				
○ ○ ○ ○				
○ ○ ○ —				
— — — ●				
— ○ ○ ○				
○ ○ ○ ○				
— ○ ○ ○				
— — ● ①				
Packages				
① ○ ○ ○				
○ ○ ○ ○				
— ① ○ ○				
— — ○ —				
— — — ①				

	XL	XLT	FX4 (F-250/F-350 only)	LARIAT
○ ○ ○ ○				
— — — ①				
○ ○ — ○				
① ● ● ●				
— — ○ ○				
○ ○ — ○				
○ ○ ○ ○				
○ ○ ○ ○				
○ — — —				
— ○ — —				

Footnotes & Disclaimers

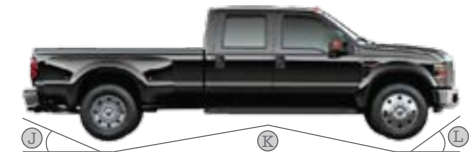
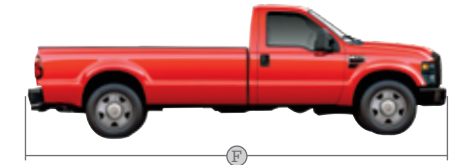
- ¹Best-in-class payload and towing, GVWR and GCWR when properly equipped. Class is Full-size Pickups over 8500 lbs. (3855 kg) GVWR.
 - ²Maximum capability when properly equipped. See your Ford of Canada Dealer for specific equipment and other limitations.
 - ³Based on Canadian Vehicle Manufacturers' Association statistical sales report, December 2007.
 - ⁴Trailer Brake Controller standard on F-450; optional on F-250/F-350. Tow/Haul Mode standard on all models with automatic transmissions.
 - ⁵TBC verified to be compatible with electric-actuated drum brakes only.
 - ⁶Driving while distracted can result in loss of vehicle control. Only use mobile phones and other devices, even with voice commands, when it is safe to do so.
 - ⁷See your Ford of Canada Dealer or contact SIRIUS at 1-888-539-7474 for more information. "SIRIUS," the SIRIUS dog logo, channel names and logos are trademarks of SIRIUS Satellite Radio Inc.
 - ⁸See your Ford of Canada Dealer for mapping details.
 - ⁹Governed at 325 hp @ 3000 rpm and 600 lb.-ft. of torque @ 2000 rpm on F-450.
 - ¹⁰Always wear your safety belt and always deactivate the passenger airbag when using a rear-facing child-safety seat with Regular Cab and SuperCab models. Always wear your safety belt and always secure children in the rear seat in Crew Cab models.
 - ¹¹SOS hardware may become damaged or the battery may lose power in a crash, which could prevent operation. Not all crashes will activate an airbag or safety belt pretensioner.
 - ¹²Final-stage manufacturer must supply control electronics.
 - ¹³DRW available on F-350 and F-450 models only.
 - ¹⁴Unique FX4 content not standard on other trim levels.
 - ¹⁵Available with F-350 SRW model only.
 - ¹⁶Available with TowBoss Package only.
 - ¹⁷4491 kg (9900 lbs.) optional GVWR. See your dealer for more details.
 - ¹⁸5.4L/6-speed manual.
 - ¹⁹6.8L/6-speed manual.
 - ²⁰6.4L/6-speed manual.
 - ²¹New for 2009.
 - ²²Camel interior with Chaparral leather-trimmed seats.
- Quiet Steel is a registered trademark of Material Sciences Corporation. Microsoft is a registered trademark of Microsoft Corporation. The Bluetooth word mark is a registered trademark owned by the Bluetooth SIG, Inc. SONY is a registered trademark of SONY Corporation.

Specifications

Dimensions

Exterior mm (in.)	Regular Cab	SuperCab		Crew Cab	
	4x2/4x4	SWB 4x2/4x4	LWB 4x2/4x4	SWB 4x2/4x4	LWB 4x2/4x4
A. Height — F-250 SRW (w/o options)	1928/2012 (75.9/79.2)	1941/2017 (76.4/79.4)	1935/2017 (76.2/79.4)	1961/2029 (77.2/79.9)	1948/2029 (76.7/79.9)
A. Height — F-350 SRW (w/o options)	1930/2037 (76.0/80.2)	1943/2047 (76.5/80.6)	1938/2042 (76.3/80.4)	1956/2060 (77.0/81.1)	1951/2055 (76.8/80.9)
A. Height — F-350 DRW (w/o options)	1933/2017 (76.1/79.4)	—	1943/2022 (76.5/79.6)	1956/2060 (77.0/81.1)	1956/2035 (77.0/80.1)
A. Height — F-450 DRW (w/o options)	—	—	—	—	2027 (79.8)
B. Overall width — SRW (excl. mirrors)	2029 (79.9)	2029 (79.9)	2029 (79.9)	2029 (79.9)	2029 (79.9)
B. Overall width — with standard mirrors	2530 (99.6)	2530 (99.6)	2530 (99.6)	2530 (99.6)	2530 (99.6)
C. Ground clearance — F-250 SRW	178/198 (7.0/7.8)	178/198 (7.0/7.8)	178/198 (7.0/7.8)	178/198 (7.0/7.8)	178/198 (7.0/7.8)
C. Ground clearance — F-350 SRW	178/198 (7.0/7.8)	178/198 (7.0/7.8)	178/198 (7.0/7.8)	178/198 (7.0/7.8)	178/198 (7.0/7.8)
C. Ground clearance — F-350 DRW	180/191 (7.1/7.5)	—	180/188 (7.1/7.4)	180/188 (7.1/7.4)	180/188 (7.1/7.4)
C. Ground clearance — F-450 DRW	—	—	—	—	198 (7.8)
D. Loadfloor height — F-250 SRW	861/874 (33.9/34.4)	861/876 (33.9/34.5)	861/876 (33.9/34.5)	859/945 (33.8/34.5)	857/876 (33.7/34.5)
D. Loadfloor height — F-350 SRW	864/945 (34.0/37.2)	866/947 (34.1/37.3)	864/945 (34.0/37.2)	864/947 (34.0/37.3)	861/945 (33.9/37.2)
D. Loadfloor height — F-350 DRW	874/889 (34.4/35.0)	—	874/892 (34.4/35.1)	874/892 (34.4/35.1)	871/892 (34.3/35.1)
D. Loadfloor height — F-450 DRW	—	—	—	—	892 (35.1)
E. Cargo box height	511 (20.1)	511 (20.1)	511 (20.1)	511 (20.1)	511 (20.1)
F. Overall length	5766 (227.0)	5888 (231.8)	6299 (248.0)	6253 (246.2)	6665 (262.4)
G. Overhang — rear	1331 (52.4)	1331 (52.4)	1331 (52.4)	1331 (52.4)	1331 (52.4)
H. Wheelbase	3480 (137.0)	3602 (141.8)	4013 (158.0)	3967 (156.2)	4379 (172.4)
I. Overhang — front	955 (37.6)	955 (37.6)	955 (37.6)	955 (37.6)	955 (37.6)
J. Angle of departure — F-250 SRW	16.4°/17.3°	16.4°/17.3°	16.2°/17.3°	16.3°/17.4°	16.2°/17.4°
J. Angle of departure — F-350 SRW	16.6°/20.3°	16.5°/20.2°	16.3°/20.2°	16.4°/20.2°	16.3°/20.2°
J. Angle of departure — F-350 DRW	17.0°/17.9°	—	16.8°/17.9°	16.8°/18.0°	16.7°/17.9°
J. Angle of departure — F-450 DRW	—	—	—	—	17.9°
K. Ramp breakover angle — F-250 SRW	13.7°/18.1°	13.1°/17.7°	11.6°/15.9°	11.8°/15.9°	10.9°/14.4°
K. Ramp breakover angle — F-350 SRW	14.3°/20.2°	13.6°/19.3°	12.0°/17.0°	12.1°/17.2°	11.0°/15.6°
K. Ramp breakover angle — F-350 DRW	13.8°/18.8°	—	13.2°/15.5°	12.1°/15.9°	11.0°/14.4°
K. Ramp breakover angle — F-450 DRW	—	—	—	—	15.2°
L. Angle of approach — F-250 SRW	21.0°/23.5°	21.1°/23.5°	21.2°/23.6°	22.4°/23.5°	21.2°/23.6°
L. Angle of approach — F-350 SRW	21.1°/22.8°	21.1°/22.8°	21.3°/22.9°	21.2°/22.9°	21.3°/22.9°
L. Angle of approach — F-350 DRW	20.9°/23.3°	—	21.0°/23.3°	21.0°/23.4°	21.1°/23.3°
L. Angle of approach — F-450 DRW	—	—	—	—	22.2°
Interior mm (in.)					
Front					
Head room	1052 (41.4)	1052 (41.4)	1052 (41.4)	1052 (41.4)	1052 (41.4)
Shoulder room	1727 (68.0)	1727 (68.0)	1727 (68.0)	1727 (68.0)	1727 (68.0)
Hip room	1717 (67.6)	1717 (67.6)	1717 (67.6)	1717 (67.6)	1717 (67.6)
Leg room	1041 (41.0)	1041 (41.0)	1041 (41.0)	1041 (41.0)	1041 (41.0)
Rear					
Head room	—	975 (38.4)	975 (38.4)	1052 (41.4)	1052 (41.4)
Shoulder room	—	1730 (68.1)	1730 (68.1)	1727 (68.0)	1727 (68.0)
Hip room	—	1709 (67.3)	1709 (67.3)	1709 (67.3)	1709 (67.3)
Leg room	—	808 (31.8)	808 (31.8)	1062 (41.8)	1062 (41.8)
Cargo Box					
Volume L (cu. ft.)	2192 (77.4)	1824 (64.4)	2192 (77.4)	1824 (64.4)	2192 (77.4)
M. Width at floor (max.) mm (in.)	1760 (69.3)	1760 (69.3)	1760 (69.3)	1760 (69.3)	1760 (69.3)
N. Length at floor mm (in.)	2489 (98.0)	2078 (81.8)	2489 (98.0)	2078 (81.8)	2489 (98.0)
O. Width at wheelhouse mm (in.)	1293 (50.9)	1293 (50.9)	1293 (50.9)	1293 (50.9)	1293 (50.9)

SRW = single rear wheel DRW = dual rear wheel SWB = short wheelbase (6.75-ft. cargo box) LWB = long wheelbase (8-ft. cargo box)



Specifications

Conventional Towing – Maximum Loaded Trailer Weights kg (lbs.)

Manual Transmission			Regular Cab				SuperCab				Crew Cab						
Engine	Axle Ratio	GCWR	F-250/F-350 4x2 SRW	F-350 4x2 DRW	F-250/F-350 4x4 SRW	F-350 4x4 DRW	F-250/F-350 4x2 SRW	F-350 4x2 DRW	F-250/F-350 4x4 SRW	F-350 4x4 DRW	F-250/F-350 4x2 SRW	F-350 4x2 DRW	F-450 4x2 DRW	F-250/F-350 4x4 SRW	F-350 4x4 DRW	F-450 4x4 DRW	
5.4L 3-valve SOHC V8	3.73	6804 (15,000)	4173 (9200)	—	3992 (8800)	—	4082 (9000)	—	3856 (8500)	—	3946 (8700)	—	—	3719 (8200)	—	—	
	4.10	7711 (17,000)	5080 (11,200)	—	4899 (10,800)	—	4990 (11,000)	—	4763 (10,500)	—	4853 (10,700)	—	—	4627 (10,200)	—	—	
		7938 (17,500)	—	5080 (11,200)	—	4899 (10,800)	—	4899 (10,800)	—	4717 (10,400)	—	—	—	—	—	—	—
6.8L 3-valve SOHC V10	4.10	9072 (20,000)	5670 (12,500)	—	5670 (12,500)	—	5670 (12,500)	—	5670 (12,500)	—	5670 (12,500)	—	—	5670 (12,500)	—	—	
		9299 (20,500)	—	6396 (14,100)	—	6169 (13,600)	—	6214 (13,700)	—	6033 (13,300)	—	6123 (13,500)	—	—	5942 (13,100)	—	—
	4.30	9979 (22,000)	5670 (12,500)	—	5670 (12,500)	—	5670 (12,500)	—	5670 (12,500)	—	5670 (12,500)	—	—	5670 (12,500)	—	—	
6.4L V8 Turbo Diesel	3.73	10,206 (22,500)	—	6804 (15,000)	—	6804 (15,000)	—	6804 (15,000)	—	6804 (15,000)	—	6804 (15,000)	—	—	6804 (15,000)	—	
		10,433 (23,000)	5670 (12,500)	—	5670 (12,500)	—	5670 (12,500)	—	5670 (12,500)	—	5670 (12,500)	—	—	5670 (12,500)	—	—	
	4.10	10,659 (23,500)	—	6804 (15,000)	—	6804 (15,000)	—	6804 (15,000)	—	6804 (15,000)	—	6804 (15,000)	—	—	6804 (15,000)	—	—
		10,559 (23,500)	—	6804 (15,000)	—	6804 (15,000)	—	6804 (15,000)	—	6804 (15,000)	—	6804 (15,000)	—	—	6804 (15,000)	—	—
4.30	12,247 (27,000)	—	—	—	—	—	—	—	—	—	—	7257 (16,000)	—	—	—	7257 (16,000)	
Automatic Transmission			Regular Cab				SuperCab				Crew Cab						
Engine	Axle Ratio	GCWR	F-250/F-350 4x2 SRW	F-350 4x2 DRW	F-250/F-350 4x4 SRW	F-350 4x4 DRW	F-250/F-350 4x2 SRW	F-350 4x2 DRW	F-250/F-350 4x4 SRW	F-350 4x4 DRW	F-250/F-350 4x2 SRW	F-350 4x2 DRW	F-450 4x2 DRW	F-250/F-350 4x4 SRW	F-350 4x4 DRW	F-450 4x4 DRW	
5.4L 3-valve SOHC V8	3.73	7257 (16,000)	4627 (10,200)	—	4445 (9800)	—	4536 (10,000)	—	4309 (9500)	—	4400 (9700)	—	—	4218 (9300)	—	—	
	4.10	8165 (18,000)	5534 (12,200)	—	5352 (11,800)	—	5443 (12,000)	—	5216 (11,500)	—	5307 (11,700)	—	—	5126 (11,300)	—	—	
		8391 (18,500)	—	5534 (12,200)	—	5352 (11,800)	—	5352 (11,800)	—	5171 (11,400)	—	—	—	—	—	—	—
6.8L 3-valve SOHC V10	4.10	9525 (21,000)	5670 (12,500)	—	5670 (12,500)	—	5670 (12,500)	—	5670 (12,500)	—	5670 (12,500)	—	—	5670 (12,500)	—	—	
		9752 (21,500)	—	6804 (15,000)	—	6622 (14,600)	—	6668 (14,700)	—	6486 (14,300)	—	6577 (14,500)	—	—	6396 (14,100)	—	—
	4.30	10,206/10,433 (22,500/23,000) ⁵	5670 (12,500)	—	5670 (12,500)	—	5670 (12,500)	—	5670 (12,500)	—	5670 (12,500)	—	—	5670 (12,500)	—	—	
6.4L V8 Turbo Diesel	3.55	10,433 (23,000)	5670 (12,500)	—	5670 (12,500)	—	5670 (12,500)	—	5670 (12,500)	—	5670 (12,500)	—	—	5670 (12,500)	—	—	
		10,659 (23,500)	—	6804 (15,000)	—	6804 (15,000)	—	6804 (15,000)	—	6804 (15,000)	—	6804 (15,000)	—	—	6804 (15,000)	—	—
	3.73	10,433 (23,000)	5670 (12,500)	—	5670 (12,500)	—	5670 (12,500)	—	5670 (12,500)	—	5670 (12,500)	—	—	5670 (12,500)	—	—	
		10,659 (23,500)	—	6804 (15,000)	—	6804 (15,000)	—	6804 (15,000)	—	6804 (15,000)	—	6804 (15,000)	—	—	6804 (15,000)	—	—
	4.10	10,659 (23,500)	—	6804 (15,000)	—	6804 (15,000)	—	6804 (15,000)	—	6804 (15,000)	—	6804 (15,000)	—	—	6804 (15,000)	—	—
	4.30LS ⁶	11,793 (26,000)	—	6804 (15,000)	—	6804 (15,000)	—	6804 (15,000)	—	6804 (15,000)	—	6804 (15,000)	—	—	6804 (15,000)	—	—
4.30	14,969 (33,000)	—	—	—	—	—	—	—	—	—	—	7257 (16,000)	—	—	—	7257 (16,000)	

Maximum capabilities shown are for properly equipped vehicles with required equipment and a 68-kg (150-lb.) driver. Weight of additional options, equipment, passengers and cargo must be deducted from this weight. For additional information, see your Ford of Canada Dealer.

Specifications

5th-Wheel Towing – Maximum Loaded Trailer Weights kg (lbs.)

Manual Transmission			Regular Cab				SuperCab				Crew Cab					
Engine	Axle Ratio	GCWR	F-250/F-350 4x2 SRW	F-350 4x2 DRW	F-250/F-350 4x4 SRW	F-350 4x4 DRW	F-250/F-350 4x2 SRW	F-350 4x2 DRW	F-250/F-350 4x4 SRW	F-350 4x4 DRW	F-250/F-350 4x2 SRW	F-350 4x2 DRW	F-450 4x2 DRW	F-250/F-350 4x4 SRW	F-350 4x4 DRW	F-450 4x4 DRW
5.4L 3-valve SOHC V8	3.73	6804 (15,000)	4173 (9200)	—	3992 (8800)	—	4082 (9000)	—	3856 (8500)	—	3946 (8700)	—	—	3765 (8300)	—	—
	4.10	7711 (17,000)	5080 (11,200)	—	4899 (10,800)	—	4990 (11,000)	—	4763 (10,500)	—	4853 (10,700)	—	—	4672 (10,300)	—	—
		7938 (17,500)	—	5080 (11,200)	—	4899 (10,800)	—	4899 (10,800)	—	—	4717 (10,400)	—	—	—	—	—
6.8L 3-valve SOHC V10	4.10	9072 (20,000)	6350 (14,000)	—	6169 (13,600)	—	6260 (13,800)	—	6078 (13,400)	—	6214 (13,700)	—	—	5942 (13,100)	—	—
		9299 (20,500)	—	6396 (14,100)	—	6169 (13,600)	—	6214 (13,700)	—	6033 (13,300)	—	6123 (13,500)	—	—	5897 (13,000)	—
	4.30	9979 (22,000)	7257 (16,000)	—	7076 (15,600)	—	7167 (15,800)	—	6985 (15,400)	—	7076 (15,600)	—	—	6849 (15,100)	—	—
6.4L V8 Turbo Diesel	3.73	10,206 (22,500)	—	7303 (16,100)	—	7076 (15,600)	—	7121 (15,700)	—	6940 (15,300)	—	7031 (15,500)	—	—	6804 (15,000)	—
		10,433 (23,000)	7394 (16,300)	—	7167 (15,800)	—	7257 (16,000)	—	7076 (15,600)	—	7167 (15,800)	—	—	6940 (15,300)	—	—
	4.10	10,659 (23,500)	—	7394 (16,300)	—	7167 (15,800)	—	7212 (15,900)	—	7031 (15,500)	—	7121 (15,700)	—	—	6895 (15,200)	—
		12,247 (27,000)	—	—	—	—	—	—	—	—	—	—	—	8437 (18,600)	—	8255 (18,200)

Automatic Transmission			Regular Cab				SuperCab				Crew Cab					
Engine	Axle Ratio	GCWR	F-250/F-350 4x2 SRW	F-350 4x2 DRW	F-250/F-350 4x4 SRW	F-350 4x4 DRW	F-250/F-350 4x2 SRW	F-350 4x2 DRW	F-250/F-350 4x4 SRW	F-350 4x4 DRW	F-250/F-350 4x2 SRW	F-350 4x2 DRW	F-450 4x2 DRW	F-250/F-350 4x4 SRW	F-350 4x4 DRW	F-450 4x4 DRW
5.4L 3-valve SOHC V8	3.73	7257 (16,000)	4623 (10,200)	—	4445 (9800)	—	4536 (10,000)	—	4309 (9500)	—	4400 (9700)	—	—	4218 (9300)	—	—
	4.10	8165 (18,000)	5534 (12,200)	—	5352 (11,800)	—	5443 (12,000)	—	5216 (11,500)	—	5307 (11,700)	—	—	5126 (11,300)	—	—
		8391 (18,500)	—	5534 (12,200)	—	5352 (11,800)	—	5352 (11,800)	—	5171 (11,400)	—	—	—	—	—	—
6.8L 3-valve SOHC V10	4.10	9525 (21,000)	6804 (15,000)	—	6622 (14,600)	—	6713 (14,800)	—	6532 (14,400)	—	6622 (14,600)	—	—	6396 (14,100)	—	—
		9752 (21,500)	—	6849 (15,100)	—	6668 (14,700)	—	6668 (14,700)	—	6486 (14,300)	—	6577 (14,500)	—	—	6396 (14,100)	—
	4.30	10,206/10,433 (22,500/23,000) ⁵	7484/7620 (16,500/16,800) ⁵	—	7303/7530 (16,100/16,600) ⁵	—	7394/7530 (16,300/16,600) ⁵	—	7212/7394 (15,900/16,300) ⁵	—	7303/7484 (16,100/16,500) ⁵	—	—	7076/7303 (15,600/16,100) ⁵	—	—
6.4L V8 Turbo Diesel	3.55	10,433 (23,000)	7394 (16,300)	—	7167 (15,800)	—	7257 (16,000)	—	7076 (15,600)	—	7167 (15,800)	—	—	6940 (15,300)	—	—
	3.73	10,433 (23,000)	7394 (16,300)	—	7167 (15,800)	—	7257 (16,000)	—	7076 (15,600)	—	7167 (15,800)	—	—	6940 (15,300)	—	—
		10,659 (23,500)	—	7394 (16,300)	—	7212 (15,900)	—	7212 (15,900)	—	7031 (15,500)	—	7167 (15,800)	—	—	6895 (15,200)	—
	4.10	10,659 (23,500)	—	7394 (16,300)	—	7212 (15,900)	—	7212 (15,900)	—	7031 (15,500)	—	7167 (15,800)	—	—	6895 (15,200)	—
	4.30LS ⁶	11,793 (26,000)	—	8528 (18,800)	—	8346 (18,400)	—	8346 (18,400)	—	8165 (18,000)	—	8301 (18,300)	—	—	8029 (17,700)	—
4.30	14,969 (33,000)	—	—	—	—	—	—	—	—	—	—	—	11,158 (24,600)	—	10,977 (24,200)	

Maximum capabilities shown are for properly equipped vehicles with required equipment and a 68-kg (150-lb.) driver. Weight of additional options, equipment, passengers and cargo must be deducted from this weight. For additional information, see your Ford of Canada Dealer.

Conventional Towing Notes: This information also applies to models with pickup box delete option (66D). Trailer tongue load weight should be 10-15% of total loaded trailer weight. Make sure that the vehicle payload (reduced by option weight) will accommodate trailer tongue load weight and the weight of passengers and cargo added to the towing vehicle. The addition of trailer tongue load weight, and the weight of passengers and cargo, cannot cause vehicle weights to exceed the rear GAWR (Gross Axle Weight Rating) or GVWR (Gross Vehicle Weight Rating). These ratings can be found on the vehicle Safety Compliance Certification Label. For F-250/F-350 SRW models, F-250 trailer weights are shown; F-350 trailer weights are within 91 kg (200 lbs.). Check with your sales consultant.

5th-Wheel Towing Notes: This information also applies to models with pickup box delete option (66D). Trailer kingpin weight should be 15-25% of total loaded trailer weight. Make sure that the vehicle payload (reduced by option weight) will accommodate trailer kingpin weight and the weight of passengers and cargo added to the towing vehicle. The addition of trailer kingpin weight, and the weight of passengers and cargo, cannot cause vehicle weights to exceed the rear GAWR (Gross Axle Weight Rating) or GVWR (Gross Vehicle Weight Rating). These ratings can be found on the vehicle Safety Compliance Certification Label. For F-250/F-350 SRW models, F-250 trailer weights are shown; F-350 trailer weights are within 91 kg (200 lbs.). Check with your sales consultant.

Specifications

Maximum Payload Weight Ratings kg (lbs.)

Model/Wheelbase							
		Regular Cab	SuperCab		Crew Cab		
Series	GVWR	137.0-in.	141.8-in.	158.0-in.	156.2-in.	172.4-in.	
F-250 4x2	3992 (8800)	1411 (3110) ¹⁸	—	—	—	—	
	4082 (9000)	1442 (3180) ¹⁹	1402 (3090) ¹⁸	—	—	—	
	4173 (9200)	—	1433 (3160) ¹⁹	1420 (3130) ¹⁸	1397 (3080) ¹⁸	—	
	4264 (9400)	1266 (2790) ²⁰	—	1451 (3200) ¹⁹	1429 (3150) ¹⁹	1433 (3160) ¹⁸	
	4354 (9600)	—	1238 (2730) ²⁰	—	—	1461 (3220) ¹⁹	
	4445 (9800)	—	—	1275 (2810) ²⁰	1211 (2670) ²⁰	—	
	4491 (9900) ¹⁷	—	—	—	—	1238 (2730) ²⁰	
	4536 (10,000)	—	—	—	—	1284 (2830) ²⁰	
F-250 4x4	4082 (9000)	1311 (2890) ¹⁸	—	—	—	—	
	4173 (9200)	1343 (2960) ¹⁹	1302 (2870) ¹⁸	—	—	—	
	4264 (9400)	—	1329 (2930) ¹⁹	1320 (2910)	1293 (2850) ¹⁸	—	
	4354 (9600)	1157 (2550) ²⁰	—	1352 (2980) ¹⁹	1324 (2920) ¹⁹	1334 (2940) ¹⁸	
	4445 (9800)	—	1134 (2500) ²⁰	—	—	1361 (3000) ¹⁹	
	4491 (9900) ¹⁷	—	—	1120 (2470) ²⁰	1098 (2420) ²⁰	1043 (2300) ²⁰	
	4536 (10,000)	—	—	1166 (2570) ²⁰	1143 (2520) ²⁰	1089 (2400) ²⁰	
	F-350 SRW 4x2	4491 (9900) ¹⁷	1842 (4060) ¹⁸	1742 (3840) ¹⁸	1719 (3790) ¹⁸	1692 (3730) ¹⁸	1637 (3610) ¹⁸
4536 (10,000)		1887 (4160) ¹⁸	1787 (3940) ¹⁸	1764 (3890) ¹⁸	1284 (3830) ¹⁸	1683 (3710) ¹⁸	
4536 (10,000)		1823 (4020) ¹⁹	1724 (3800) ¹⁹	1701 (3750) ¹⁹	1678 (3700) ¹⁹	1624 (3580) ¹⁹	
4536 (10,000)		1515 (3340) ²⁰	1402 (3090) ²⁰	1343 (2960) ²⁰	1320 (2910) ²⁰	1266 (2790) ²⁰	
4581 (10,100)		1932/1869 (4260/4120) ^{18,19}	1833 (4040) ¹⁸	—	—	—	
F-350 SRW 4x2	4627 (10,200)	—	1814 (4000) ¹⁹	—	—	—	
	4672 (10,300)	—	—	—	—	—	
	4717 (10,400)	—	—	1896 (4180) ¹⁸	1869 (4120) ¹⁸	—	
	4808 (10,600)	1737 (3830) ²⁰	—	1923 (4240) ¹⁹	1901 (4190) ¹⁹	1905 (4200) ¹⁸	
	4853 (10,700)	—	—	—	—	—	
	4899 (10,800)	—	1715 (3780) ²⁰	—	—	1937 (4270) ¹⁹	
	4990 (11,000)	—	—	1746 (3850) ²⁰	1724 (3800) ²⁰	—	
	5080 (11,200)	—	—	—	—	1760 (3880) ²⁰	
	F-350 SRW 4x4	4491 (9900) ¹⁷	1696 (3740) ¹⁸	1597 (3520) ¹⁸	1524 (3360) ¹⁸	1497 (3300) ¹⁸	1447 (3190) ¹⁸
		4536 (10,000)	1742 (3840) ¹⁸	1642 (3620) ¹⁸	1569 (3460) ¹⁸	1542 (3400) ¹⁸	1492 (3290) ¹⁸
		4536 (10,000)	1683 (3710) ¹⁹	1583 (3490) ¹⁹	1510 (3330) ¹⁹	1488 (3280) ¹⁹	1433 (3160) ¹⁹
		4536 (10,000)	1315 (2900) ²⁰	1202 (2650) ²⁰	1143 (2520) ²⁰	1120 (2470) ²⁰	1066 (2350) ²⁰
	F-350 SRW 4x4	4717 (10,400)	1878 (4140) ¹⁸	—	—	—	—
4808 (10,600)		1905 (4200) ¹⁹	1864 (4110) ¹⁸	—	—	—	
4899 (10,800)		—	1896 (4180) ¹⁹	1887 (4160) ¹⁸	1860 (4100) ¹⁸	—	
4990 (11,000)		1719 (3790) ²⁰	—	1914 (4220) ¹⁹	1891 (4170) ¹⁹	1896 (4180) ¹⁸	
5035 (11,100)		—	—	—	—	—	
5080 (11,200)		—	1696 (3740) ²⁰	—	—	1928 (4250) ¹⁹	
5171 (11,400)		—	—	1733 (3820) ²⁰	1706 (3760) ²⁰	—	
5216 (11,500)		—	—	—	—	1696 (3740) ²⁰	
F-350 DRW 4x2		5352 (11,800)	2549 (5620) ¹⁸	—	—	—	—
		5443 (12,000)	2581 (5690) ¹⁹	—	—	—	—
	5534 (12,200)	—	—	2558 (5640) ¹⁸	—	—	
	5625 (12,400)	2404 (5300) ²⁰	—	2590 (5710) ¹⁹	—	—	
	5715 (12,600)	—	—	—	—	2599 (5730) ¹⁹	
	5806 (12,800)	—	—	2413 (5320) ²⁰	—	—	
	5897 (13,000)	—	—	—	—	2427 (5350) ²⁰	
F-350 DRW 4x4	5443 (12,000)	2449 (5400) ¹⁸	—	—	—	—	
	5534 (12,200)	2477 (5460) ¹⁹	—	—	—	—	
	5625 (12,400)	—	—	2458 (5420) ¹⁸	—	—	
	5715 (12,600)	2295 (5060) ²⁰	—	2490 (5490) ¹⁹	—	2409 (5310) ¹⁹	
	5897 (13,000)	—	—	2309 (5090) ²⁰	—	2227 (4910) ²⁰	
F-450 DRW 4x2	6577 (14,500)	—	—	—	—	2808 (6190) ²⁰	
F-450 DRW 4x4	6577 (14,500)	—	—	—	—	2644 (5830) ²⁰	

Mechanical Specifications

Front Suspension			
Type	Twin-I-Beam (F-250/F-350 4x2); solid Twin-Coil Monobeam axle (F-250/F-350 4x4, F-450 4x2 and 4x4)		
Axle (rating @ ground)	2381 kg (5250 lbs.) (F-250/F-350 4x2); 2722 kg (6000 lbs.) (F-250/F-350 4x4); 3175 kg (7000 lbs.) (F-450)		
Springs	Coil		
Shock absorbers	35-mm (1½-in.) gas-type		
Stabilizer bar	Standard		
Rear Suspension			
Type	Solid axle		
Axle (rating @ ground)	2767 kg (6100 lbs.) (F-250); 3198 kg (7050 lbs.) (F-350 SRW); 4082 kg (9000 lbs.) (F-350 DRW); 4990 kg (11,000 lbs.) (F-450)		
Springs	Leaf		
Shock absorbers	35-mm (1½-in.) gas-type		
Stabilizer bar	Standard on DRW pickup; optional in package on SRW pickup		
Steering			
Assist	Power		
Overall ratio	20.35:1 (F-250/F-350 4x2); 19.77:1 (F-250/F-350 4x4); 20.38:1 (average; F-450)		
Brakes			
Type	4-wheel disc Anti-lock Brake System (ABS) (standard)		
Front (rotor diameter)	347 mm (13.66 in.) (F-250/F-350); 369 mm (14.53 in.) (F-450)		
Rear (rotor diameter)	340 mm (13.39 in.) (F-250/F-350); 390 mm (15.35 in.) (F-450)		
Wheels			
Type	Steel (standard); chrome-clad steel or aluminum (optional)		
Size	17-in. (standard); 18-in. or 20-in. (optional F-250/F-350 SRW); 19.5-in. (F-450)		
Number of studs	8 (F-250/F-350); 10 (F-450)		
Bolt-circle diameter	170 mm (6.7 in.) SRW; 200 mm (7.87 in.) F-350 DRW; 225 mm (8.85 in.) F-450		
Powertrains			
Engine	4x4 Transfer Case	6-Speed Manual	5-Speed Automatic
5.4L 3-Valve SEFI V8	2-speed	●	○
6.8L 3-Valve SEFI V10	2-speed	●	○
6.4L Power Stroke® V8 Turbo Diesel	2-speed	●	○

● Standard ○ Optional

Specifications

Engines

	5.4L 3-Valve V8	6.8L 3-Valve V10	6.4L Power Stroke V8 Turbo Diesel
Type	SOHC	SOHC	OHV (32-Valve)
Fuel injection	Sequential Electronic	Sequential Electronic	High-Pressure Common-Rail
Engine control system	Electronic	Electronic	Electronic
Induction system	Specially tuned	Specially tuned	Series Sequential Turbochargers, intercooler
Battery	12-volt; 650-CCA/72-amp	12-volt; 650-CCA/72-amp	Dual 12-volt; 750-CCA/78-amp
Alternator	157-amp	157-amp	135-amp (Single 200-amp or dual combined 320-amp opt.)
Cooling system	Pressurized series flow	Pressurized series flow	Pressurized series flow
Cylinders	8	10	8
Cylinder-head material	Aluminum	Aluminum	Cast iron
Block material	Cast iron	Cast iron	Cast iron
Valve operation	Hydraulic roller	Hydraulic roller	Push rod/rocker arms
Camshaft drive	Variable cam timing	Silent chain	Gear
Bore	90 mm (3.55 in.)	90 mm (3.55 in.)	98 mm (3.86 in.)
Stroke	106 mm (4.16 in.)	106 mm (4.16 in.)	105 mm (4.13 in.)
Compression ratio	9.8:1	9.2:1	16.7:1
Horsepower (hp @ rpm)	300 @ 5000	362 @ 4750	350 @ 3000*
Torque (lb.-ft. @ rpm)	365 @ 3750	457 @ 3250	650 @ 2000*
Recommended fuel	Unleaded	Unleaded	Ultra-Low-Sulfur Diesel

Wheels



17-in. Argent-Painted Steel



17-in. Argent-Painted Steel



17-in. Chrome-Clad Steel



17-in. Forged Polished-Aluminum



17-in. KING RANCH* Forged-Aluminum



18-in. Argent-Painted Steel



18-in. Bright Machined Cast-Aluminum



18-in. Chrome-Clad Steel



18-in. Premium Chrome-Clad Steel



18-in. Premium Forged-Aluminum



18-in. KING RANCH* Forged Painted-Aluminum



19.5-in. Forged Polished-Aluminum



19.5-in. KING RANCH* Forged-Aluminum



20-in. Forged Polished-Aluminum



20-in. KING RANCH* Premium Painted Forged-Aluminum



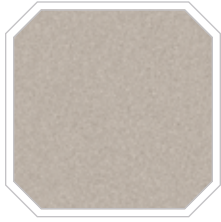
20-in. HARLEY-DAVIDSON™ Polished Forged-Aluminum

Specifications

Exterior Colours



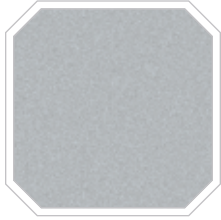
Oxford White



Pueblo Gold Metallic



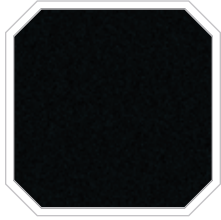
Forest Green Metallic



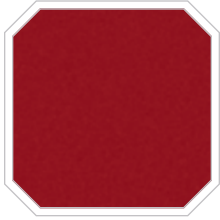
Brilliant Silver Metallic²¹



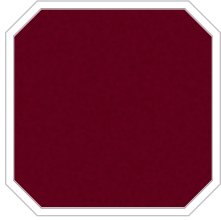
Dark Stone Metallic



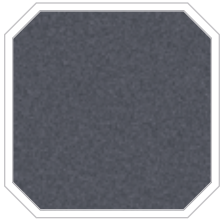
Black



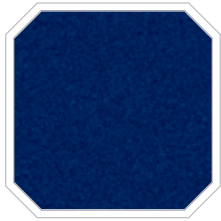
Red



Royal Red Metallic²¹



Sterling Grey Metallic²¹

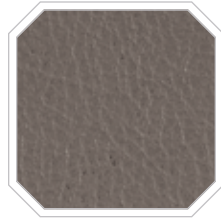


Dark Blue Pearl Metallic

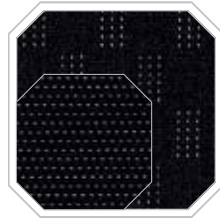
Interior Colours



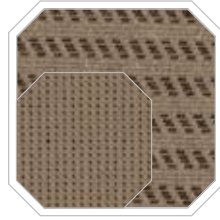
Camel Vinyl



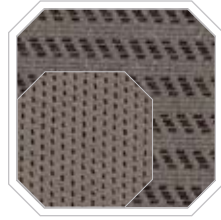
Medium Stone Vinyl



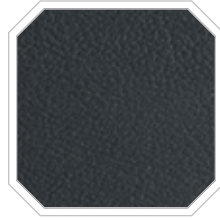
FX4 Cloth



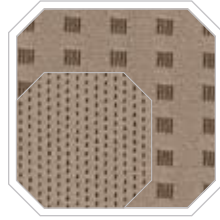
Camel Cloth



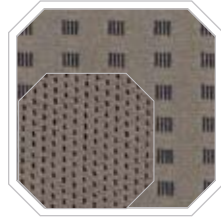
Medium Stone Cloth



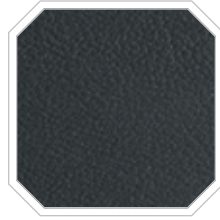
FX4 Leather



Camel Premium Cloth



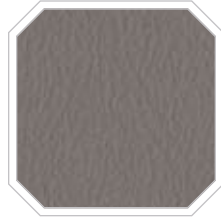
Medium Stone Premium Cloth



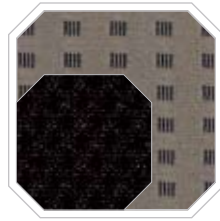
LARIAT Ebony Leather



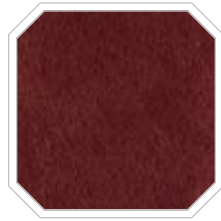
Camel Leather



Medium Stone Leather



Medium Stone Two-Tone Cloth



Chaparral Leather (KING RANCH®)

Medium Stone with Black

FX4 (Black seats)

- Oxford White
- Brilliant Silver Metallic²¹
- Black
- Red
- Dark Blue Pearl Metallic

FX4 Two-Tone (Black seats)

- Oxford White/Sterling Grey Metallic²¹
- Red/Sterling Grey Metallic²¹
- Dark Blue Pearl Metallic/Sterling Grey Metallic²¹
- Brilliant Silver Metallic/Sterling Grey Metallic²¹
- Black/Sterling Grey Metallic²¹

Ebony

Camel

Medium Stone

XL/XLT

- ● Oxford White
- ● Pueblo Gold Metallic
- ● Forest Green Metallic
- ● Brilliant Silver Metallic²¹
- ● Dark Stone Metallic
- ● Black
- ● Red
- ● Royal Red Metallic²¹
- ● Sterling Grey Metallic²¹
- ● Dark Blue Pearl Metallic

XL/XLT (DRW Crew Cab)

- ● Oxford White
- ● Black

XLT Two-Tone

- Oxford White/Pueblo Gold Metallic
- ● Oxford White/Brilliant Silver Metallic²¹
- ● Royal Red Metallic²¹/Pueblo Gold Metallic
- ● Royal Red Metallic²¹/Brilliant Silver Metallic²¹
- ● Forest Green Metallic/Pueblo Gold Metallic
- ● Forest Green Metallic/Brilliant Silver Metallic²¹
- ● Dark Blue Pearl Metallic/Pueblo Gold Metallic
- ● Dark Blue Pearl Metallic/Brilliant Silver Metallic²¹
- ● Black/Pueblo Gold Metallic
- ● Black/Brilliant Silver Metallic²¹
- ● Dark Stone Metallic/Pueblo Gold Metallic

LARIAT

- ● ● Oxford White
- ● ● Pueblo Gold Metallic
- ● ● Forest Green Metallic
- ● ● Brilliant Silver Metallic²¹
- ● ● Dark Stone Metallic
- ● ● Black
- ● ● Royal Red Metallic²¹
- ● ● Sterling Grey Metallic²¹
- ● ● Dark Blue Pearl Metallic

LARIAT Two-Tone

- ● Oxford White/Pueblo Gold Metallic
- ● Oxford White/Brilliant Silver Metallic²¹
- ● Pueblo Gold Metallic/Black
- ● Royal Red Metallic²¹/Pueblo Gold Metallic
- ● Royal Red Metallic²¹/Brilliant Silver Metallic²¹
- ● Royal Red Metallic²¹/Black
- ● Forest Green Metallic/Pueblo Gold Metallic
- ● Forest Green Metallic/Brilliant Silver Metallic²¹
- ● Dark Blue Pearl Metallic/Pueblo Gold Metallic
- ● Dark Blue Pearl Metallic/Brilliant Silver Metallic²¹
- ● Dark Stone Metallic/Pueblo Gold Metallic
- ● Sterling Grey Metallic²¹/Black
- ● Black/Pueblo Gold Metallic
- ● Black/Brilliant Silver Metallic²¹

KING RANCH® Package²²

- Oxford White/Pueblo Gold Metallic
- ● Forest Green Metallic/Pueblo Gold Metallic
- ● Dark Blue Pearl Metallic/Pueblo Gold Metallic
- ● Black/Pueblo Gold Metallic
- ● Dark Stone Metallic/Pueblo Gold Metallic
- ● Royal Red Metallic²¹/Pueblo Gold Metallic

Ford uses clearcoat paint for beauty and protection. Colours shown are representative only. Not all colours are available on all models. See your Ford of Canada Dealer for actual paint/trim options.



For more information on
Ford of Canada products and services,
please visit our website:



Our commitment to you... Peace-of-Mind Protection

- Basic Coverage:
3 years/60,000 km
- Powertrain Warranty:
5 years/100,000 km
- Corrosion Warranty:
5 years/unlimited distance
- Roadside Assistance:
5 years/100,000 km

Certain conditions apply. For more information on
these warranties and coverages, ask your local
Ford of Canada Dealer or visit ford.ca.

For prompt, courteous answers to your questions:

Ford Customer Relationship Centre
1-800-565-3673
Ford Credit Customer Service Centre
1-877-636-7346

Please note: The electronic version of the
Ford of Canada vehicle brochure is a condensed
version of the original printed version.

Competitive comparisons are based on 2008 competitive models,
publicly available information and Ford data at the time of printing
of the 2009 original printed version. Some features discussed may be
optional. Vehicles shown may contain optional equipment. Features
shown may be offered only in combination with other options or
subject to additional ordering requirements or limitations. Dimensions
shown may vary due to optional features and/or production variability.
Following publication of the 2009 original printed brochure, certain
changes in standard equipment, options and the like, or product delays
may have occurred which would not be included in these pages. Your
Ford of Canada Dealer is your best source for up-to-date information.
Ford Motor Company of Canada, Limited, reserves the right to change
product specifications at any time without incurring obligations. Colours
may not be exactly as illustrated. Please see your sales consultant for
specific colour and model availability. Please visit your local dealer or
ford.ca for complete vehicle details.

FORD EXTENDED SERVICE PLAN

For a purchase or lease, the Ford Extended Service Plan (ESP) gives you
"Peace-of-Mind" protection designed to cover key vehicle components and
help protect you from the cost of unexpected repairs. To add to your
peace of mind and help protect your investment beyond your New Vehicle
Basic Warranty, complement your ESP with a prepaid maintenance plan
that covers all required scheduled maintenance items for your vehicle and
8 wear items. Ask your Dealer for a Ford ESP, the only service contract
backed exclusively by Ford Motor Company of Canada, Limited, and
honoured at all Ford and Ford Lincoln Dealerships across North America.
Certain limitations and exclusions apply, see your Dealer for details.

FORD CREDIT

Get the ride you want. Whether you plan to lease or finance, you'll find
the choices that are right for you at Ford Credit. Ask your local Ford of
Canada Dealer for details or check us out at fordcredit.ca.

© 2008 Ford Motor Company of Canada, Limited

Free Manuals Download Website

<http://myh66.com>

<http://usermanuals.us>

<http://www.somanuals.com>

<http://www.4manuals.cc>

<http://www.manual-lib.com>

<http://www.404manual.com>

<http://www.luxmanual.com>

<http://aubethermostatmanual.com>

Golf course search by state

<http://golfingnear.com>

Email search by domain

<http://emailbydomain.com>

Auto manuals search

<http://auto.somanuals.com>

TV manuals search

<http://tv.somanuals.com>