



## THRU-THE-WALL AIR CONDITIONERS

COOL ONLY | HEAT PUMPS | ELECTRIC HEAT



**Friedrich**



# Perfect for new construction, retrofits and remodeling

## WallMaster®

### The Most Energy Efficient Solid-side Air Conditioner Installs in existing 27" sleeves



#### COOLING ONLY, HEAT PUMP & ELECTRIC HEAT

- High efficiency operation saves on energy costs
- Residential/commercial applications
- Mounts flush with the exterior wall for a neat appearance
- A high efficiency replacement for 27" sleeves including Fedders A and B\*. Sleeve measures 27" W x 16 3/4" H
- Ideal for thicker wall installations, where side fins don't fit
- Easy-to-reach, top mount controls
- Three-speed fan
- Efficient rotary compressor
- Easy-to-clean filter

#### REMOTE CONTROL FEATURES

- 24 hour programmable timer
- Money Saver® setting saves energy by cycling the fan with the compressor
- Smart Fan auto-adjusts fan speed to maintain desired temperature
- Auto-memory backup



REMOTE CONTROL	24-HOUR TIMER	MONEY SAVER FEATURE	SMART FAN
✓	✓	✓	✓



FIVE EnergyStar models

Sleeve Dimensions	Friedrich WSC Sleeve	Fedders A Sleeve	Fedders B Sleeve*
Height (inches)	16 3/4	16 3/4	16 3/4
Width (inches)	27	27	27
Depth (inches)	16 3/4	16 3/4	19 3/4

Units are shown installed in WSC sleeve (sold and shipped separately)

\*Installation in Fedders B sleeve requires a baffle kit. See BAK accessory under accessories.



**THRU-THE-WALL units** mount flush with exterior walls for a sleek appearance, as well as unobstructed window views. (Wallmaster WSC sleeve shown with architectural grille. Uni-fit grille has different appearance.)

**Uni-fit.**

**Universal Fit for Easy Replacement**  
Chassis installs into existing 26" sleeves



**COOLING ONLY & ELECTRIC HEAT**

- Rotary compressors provide quiet, dependable performance
- Six-way air flow control
- Stale air exhaust
- Auto re-start
- Washable/reusable filter
- Seacoast protection

**HEAT/COOL MODELS** feature mechanical controls, two cooling speeds, two heating speeds, plus one fan-only setting.

**COOLING MODELS** feature electronic controls with remote control, Money Saver® setting that saves energy by cycling the fan with the compressor and three cooling/three fan-only speeds.



**REMOTE CONTROL FEATURES (cool only models)**

- 12 hour programmable timer
- Money Saver® setting saves energy by cycling the fan with the compressor



REMOTE CONTROL	12-HOUR TIMER	MONEY SAVER FEATURE
✓	✓	✓



**TWO EnergyStar models**

Sleeve Dimensions	Friedrich USC Sleeve	GE	Amana	Whirlpool/Fedders	Frigidaire
Height (inches)	15 17/32	15 5/8	15 5/8	15 3/4	15 7/16
Width (inches)	25 7/8	26	26	26 3/4	25 7/8
Depth (inches)	16 23/32	16 7/8	16 7/8	15	18

Units are shown without USC sleeve (USC sleeves sold and shipped separately)

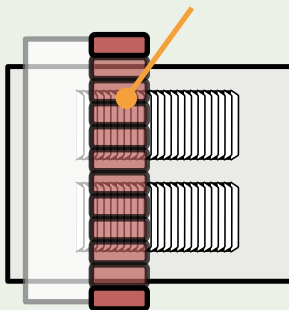
# Commercial and residential applications



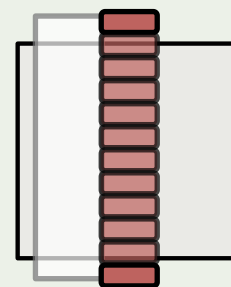
When should you  
install a solid side  
sleeve?

**SOLID SIDE wall sleeve**  
allows for installation in thick  
exterior walls where the  
installation of room air units  
with side vents would effect  
performance and may even  
void the warranty.

*ROOM AIR CONDITIONER*  
*Blocked side vents restrict air flow*



*FRIEDRICH THRU-THE-WALL*  
*Solid-side sleeve (no side vents)*



## WallMaster® Exterior Grilles

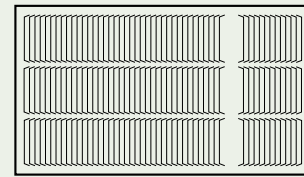


WSC Sleeve/Standard Grille    WSC Sleeve/Optional Architectural Grille, AG

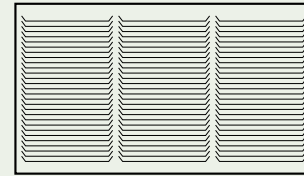
### IMPORTANT:

Operating the air conditioner with incorrect rear grille or without Baffle Adapter Kit (on 19 3/4" deep sleeve) will recirculate discharge air and cause compressor overload to trip.

### CORRECT Vertical Louvers



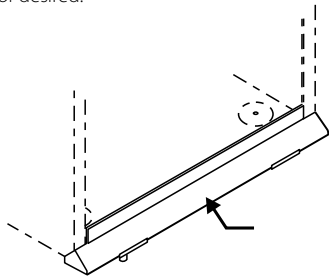
### INCORRECT Horizontal Louvers



## Installation Accessories (WallMaster only)

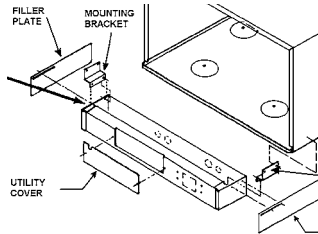
### DK / Drain Kit

Installed at the back of the unit and allows for attachment to permanent condensate disposal system, if disposal is necessary or desired.



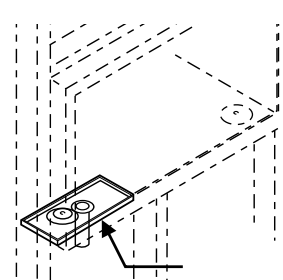
### SB / Sub Base

Used as a base for the unit when it is desired to place the cord and receptacle within the installation, or simply as a base for the unit when mounted low in the wall.



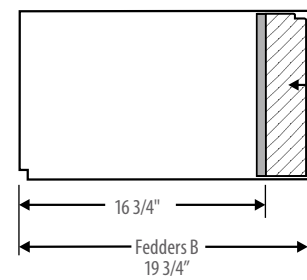
### IDK / Internal Drain Kit

New construction applications where a condensate drain system has been built into the wall interior.

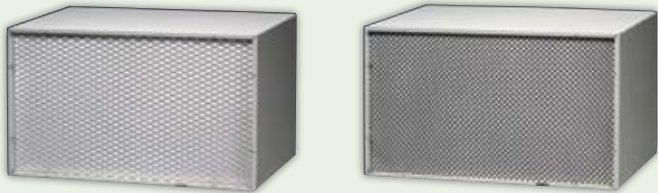


### BAK / Baffle Adapter Kit

Necessary when installing in a sleeve deeper than 16 3/4" deep, such as Fedders B sleeve (19 3/4" deep).



## Uni-fit® Exterior Grilles



USC Sleeve/Standard Grille

USC Sleeve/Replacement Grille\*

### STANDARD GRILLE – Expanded aluminum

For use with USC sleeve. (Ships with USC sleeve).

### \*REPLACEMENT GRILLE – High-tech plastic

For use on existing sleeves without any grille. (Ships with chassis).

### IMPORTANT NOTE:

When installing into an existing sleeve, consult Installation Section of your Installation/Operation Manual to determine whether or not the grille needs to be replaced and/or a baffle adapter should be used.

## WallMaster® | Uni-fit® Sleeve/Chassis Dimensions

Model	Height	Width	Depth	Depth with Front	Minimum Extension Into Room	Minimum Extension Outside	Thru-the-wall Finished Hole Height	Thru-the-wall Finished Hole Width
<b>WALLMASTER</b>								
WSC Sleeve	16 3/4"	27"	16 3/4"	23"	7 1/2"	9/16"	17 1/4"	27 1/4"
Chassis	15 3/4"	26 1/2"	21"	–	–	–	–	–
<b>UNI-FIT</b>								
USC Sleeve	15 1/2"	25 7/8"	16 3/4"	20 1/2"	–	1/2"	15 3/4"	26 1/8"
US Chassis	14 3/8"	24"	–	20 1/8"	3 3/4"	–	–	–
UE Chassis	14 3/8"	24 5/8"	–	19 5/8"	3 1/2"	–	–	–

### IMPORTANT:

- Sleeves are sold and shipped separately to accommodate new construction and replacement requirements

# Specifications



Model	Cooling Capacity BTU/h	Heating Capacity BTU/h	Volts Rated	Cooling Amps	Cooling Watts	Heating Amps	Heating Watts	Energy Efficiency Ratio EER	Moisture Removal Pints/Hr.	Room Side Air Circulation	Net Weight Lbs.
<b>WALLMASTER</b>											
★ WS08B10A	8000	—	115	6.8	762	—	—	10.5	1.3	245	93
★ WS10B10A	10000	—	115	8.7	954	—	—	10.5	2.4	245	103
★ WS14B10A	13500	—	115	12.0	1415	—	—	9.5	3.3	295	112
★ WS10B30A	10000/10000	—	230/208	4.6/5.0	1005/996	—	—	10.0/10.0	2.1	260	101
WS13B30B	12500/12000	—	230/208	6.3/6.7	1404/1379	—	—	8.9/8.7	3.3	280	109
WS16B30A	15800/15000	—	230/208	7.8/8.5	1756/1705	—	—	9.0/8.8	4.2	290	119
WE10B33C	10000/10000	11000/9100	230/208	4.6/5.0	1005/996	16.0/14.7	3550/2950	10.0/10.0	2.1	260	103
WE13B33C	12500/12000	11000/9100	230/208	6.3/6.7	1404/1379	16.0/14.7	3550/2950	8.9/8.7	3.3	280	111
WE16B33C	15800/15000	11000/9100	230/208	7.8/8.5	1756/1705	16.0/14.7	3550/2950	9.0/8.8	4.2	290	121
★ WY10B33C	10100/9800	8100/7800	230/208	4.6/4.8	1013/976	3.9/4.0	857/821	10.0/10.0	2.5	230	107
WY13B33C	12500/12100	10400/10000	230/208	6.4/6.8	1389/1352	5.4/5.7	1182/1136	9.0/9.0	3.2	280	116
<b>UNI-FIT</b>											
★ US08B10A	8000	—	115	7.5	830	—	—	9.6	2.2	260	73
US10B10A	9800	—	115	10.2	1110	—	—	8.8	3.2	285	78
★ US10B30A	10000/9800	—	230/208	4.7/5.2	1060/1040	—	—	9.4	3.2	285	78
US12B10A	11500	—	115	12.0	1310	—	—	8.8	3.8	290	80
US12B30B	11500/11200	—	230/208	6.0/6.4	1310/1270	—	—	8.8	3.8	290	80
US14B30A	13000/12600	—	230/208	7.0/7.5	1530/1480	—	—	8.5	4.0	300	84
UE08A13B	8000	3850	115	7.5	830	10.7	1230	9.6	2.2	260	73
UE10A33B	10000/9800	11200/9200	230/208	4.7/5.2	1060/1040	15.3/14.0	3500/2900	9.4	3.2	285	78
UE12A33B	11500/11200	11200/9200	230/208	6.0/6.4	1310/1270	15.3/14.0	3500/2900	8.8	3.8	290	80

WallMaster Heat Pump heating information (shown in red) indicates heat pump heating performance. WallMaster Electric Heat heating information (shown in red) indicates electric heat strip performance. For WallMaster Heat Pump electric heating performance refer to corresponding WallMaster Electric Heat model.

## WALLMASTER HEAT PUMP

### HEATING PERFORMANCE

Change-over from heat pump operation to resistance operation on models indicated is automatic at a preset outside ambient temperature of approximately 35°F.

Calculate the heat loss of the space to be heated. As long as the heat loss does not exceed the resistance heating capacity rating of the unit, the heating performance will be satisfactory.

Note: all models will produce condensate. If condensate disposal is desired, an optional drain kit is available.

**DEFROST CONTROL:** Initiated at 20°F (outdoor coil temperature) and terminated at 43°F (outdoor coil temperature). During defrost, the compressor stops and the electric heat starts, then operates with the fan to maintain indoor comfort. Below 43°F, the unit remains in electric heat mode. During electric heat mode, the unit will achieve the following ratings: 11000/9100 BTU/h, 16.0/14.7 amps, and 3550/2950 watts.

**DEFROST DRAIN:** Drain automatically opens at approximately 50°F to prevent condensate from freezing inside drain pan.

## Plug Face/ Circuit Rating

WallMaster Model Number	Uni-Fit Model Number	Circuit Rating Breaker or T-D Fuse	Plug Face (NEMA#)	Wall Outlet Appearance
WS08B10A, WS10B10A, WS14B10A	US08B10A, UE08A13B US10B10A, US12B10A	125V - 15A	5 - 15P	
WS10B30A, WS13B30A, WS16B30A	US10B30A, US12B30B, US14B30A	250V - 15A	6 - 15P	
WE10, WE13, WE16 WY10, WY13	UE10A33B, UE12A33B	250V - 20A	6 - 20P	



As an ENERGY STAR® partner, Friedrich Air Conditioning Co. has determined that the selected ENERGY STAR® models (★) meet the ENERGY STAR® guidelines for energy efficiency.



Friedrich Air Conditioning Co. | P.O. Box 1540 | San Antonio, TX 78295-1540 | (800) 541-6645 | fax (210) 357-4480 | www.friedrich.com

TTW-08

Printed in USA

## Free Manuals Download Website

<http://myh66.com>

<http://usermanuals.us>

<http://www.somanuals.com>

<http://www.4manuals.cc>

<http://www.manual-lib.com>

<http://www.404manual.com>

<http://www.luxmanual.com>

<http://aubethermostatmanual.com>

Golf course search by state

<http://golfingnear.com>

Email search by domain

<http://emailbydomain.com>

Auto manuals search

<http://auto.somanuals.com>

TV manuals search

<http://tv.somanuals.com>