

DIGITAL CAMERA

FinePix 30i

2.0
MEGA
PIXELS



Getting Ready

1

Basic Photography

2

Advanced Features
Photography

3

Advanced Features
Playback

4

Music

5

Remote Controller

6

Settings

7

PC Connection

8

OWNER'S MANUAL

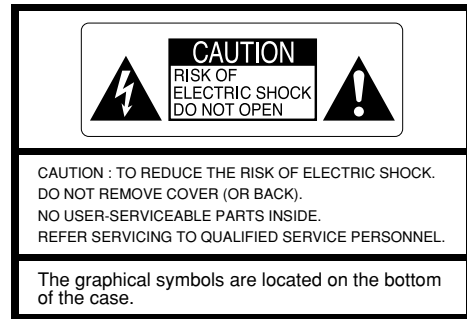
This manual will show you how to use your FUJIFILM DIGITAL CAMERA

FinePix 30i correctly. Please follow the instructions carefully. Download from www.3dmanuals.com. All Manuals Search And Download. BL00088-200 (1)



Warning

To prevent fire or shock hazard, do not expose the unit to rain or moisture.



This symbol is intended to alert the user to the presence of uninsulated "dangerous voltage" within the product's enclosure that may be of sufficient magnitude to constitute a risk of electric shock to persons.



This symbol is intended to alert the user to the presence of important operating and maintenance (servicing) instructions in the literature accompanying the appliance.

For customers in the U.S.A.

FCC Statement

This device complies with part 15 of the FCC Rules. Operation is subject to the following two conditions : (1) This device may not cause harmful interference, and (2) this device must accept any interference received, including interference that may cause undesired operation.

CAUTION

This equipment has been tested and found to comply with the limits for a Class B digital device, pursuant to Part 15 of the FCC Rules. These limits are designed to provide reasonable protection against harmful interference in a residential installation. This equipment generates, uses, and can radiate radio frequency energy and, if not installed and used in accordance with the instructions, may cause harmful interference to radio communications. However, there is no guarantee that interference will not occur in a particular installation. If this equipment does cause harmful interference to radio or television reception, which can be determined by turning the equipment off and on, the user is encouraged to try to correct the interference by one or more of the following measures :

- Reorient or relocate the receiving antenna.
- Increase the separation between the equipment and receiver.
- Connect the equipment into an outlet on a circuit different from that to which the receiver is connected.

— Consult the dealer or an experienced radio/TV technician for help.

You are cautioned that any changes or modifications not expressly approved in this manual could void the user's authority to operate the equipment.

Notes on the Grant:

To comply with Part 15 of the FCC rules, this product must be used with a Fujifilm-specified ferrite-core USB cable and DC supply cord.

For customers in Canada

CAUTION

This Class B digital apparatus complies with Canadian ICES-003.

Please read the Safety Notes (→P.110) and make sure you understand them before using the camera.

Contents

Warning	2
Preface	6
Camera Features and Accessories	7
Nomenclature	8

1 Getting Ready

PREFACE	11
Selecting the Language	11
Attaching the Shoulder Strap	11
CHARGING AND LOADING THE BATTERIES	12
LOADING THE BATTERIES	14
LOADING THE SmartMedia™	15
REMOVING THE SmartMedia™	16
OPENING/CLOSING THE LENS COVER	17
SWITCHING ON AND OFF	17
SETTING THE DATE AND TIME	20
USING THE OPTIONAL AC POWER ADAPTER	22

2 Basic Photography

STILL IMAGE MODE	
TAKING PICTURES (A AUTO MODE)	23
Number of Available Shots	26
FRAMING GUIDELINE FUNCTION	27
MACRO (CLOSE-UP) PHOTOGRAPHY	28
DIGITAL ZOOM	29

PLAYBACK MODE	
VIEWING YOUR IMAGES (PLAYBACK)	30
PLAYBACK ZOOM	31
MULTI-FRAME PLAYBACK	32
ERASING SINGLE FRAME	33

3 Advanced Features Photography

ADVANCED FEATURES PHOTOGRAPHY	35
Photography mode specifications	35

STILL IMAGE MODE

SELECTING A AUTO OR M MANUAL	36
------------------------------------	----

PHOTOGRAPHY MENU

PHOTOGRAPHY MENU OPERATION	37
FLASH	38
Auto Flash Mode	38
Red-Eye Reduction	39
Forced Flash	39
Suppressed Flash	40
Slow Synchro	40
SELF-TIMER PHOTOGRAPHY	41
SOUND SYNC.	43
VOICE CAPTIONING	44
EV (EXPOSURE COMPENSATION)	46
WHITE BALANCE (SELECTING THE LIGHT SOURCE)	47

AUDIO/MOVIE MODE

MOVIE	48
AUDIO RECORDING	51

4 Advanced Features Playback

ADVANCED FEATURES PLAYBACK	53
Playback mode menu	53
PLAYING BACK MOVIES	54
PLAYING BACK VOICE CAPTIONS	56
PLAYING BACK AUDIO RECORDINGS	58

PLAYBACK MENU

ERASING SINGLE • ALL FRAMES/FORMATTING	60
ERASING MUSIC	62
HOW TO SPECIFY PRINT OPTIONS (DPOF)	64
DPOF DATE SETTING	65
DPOF SET FRAME	66

5 Music

PLAYING MUSIC	68
CONNECTING THE REMOTE CONTROLLER	69
SELECTING MUSIC MODE	69
USING MUSIC	70

6 Remote Controller

TAKING PHOTOGRAPHS USING THE REMOTE CONTROLLER	74
PLAYBACK USING THE REMOTE CONTROLLER	75
AUDIO RECORDING USING THE REMOTE CONTROLLER	76

7 Settings

SETTINGS/USING THE OPTION MENU	78
List of settings	78
SETTING THE FILE SIZE AND QUALITY (COMPRESSION RATIO)	79
LCD MONITOR BRIGHTNESS/VOLUME	80

SET-UP

SET-UP	81
SET-UP menu options	81
Using SET-UP	81
POWER SAVE	82

8 PC Connection

PC (PERSONAL COMPUTER) IN CONNECTION	83
The first time you connect the camera to your computer	83
DSC (Mass storage device) Mode	83
PC-CAM (camera) Mode	83
CONNECTING AT DSC MODE	84
CONNECTING AT PC-CAMERA MODE	86
DISCONNECTING FROM THE PC (Important – always use this procedure.)	88

System Expansion Options	90
Accessories Guide	91
Notes on Using Your Camera Correctly	93
Notes on the Power Supply	94
Applicable Batteries	94
Notes on the Batteries	94
Notes on Using the Enclosed Battery Charger	95
Specifications of the Enclosed Battery Charger BC-NHS	96
Notes on Using the AC Power Adapter	96
Notes on the SmartMedia™	97
Warning Displays	99
Troubleshooting	102
Specifications	105
Explanation of Terms	108
Safety Notes	110
EC Declaration of Conformity	114

Preface

■ Test Shots Prior to Photography

For particularly important photographs (such as weddings and overseas trips), always take a test photograph and view the image to make sure that the camera is functioning normally.

- Fuji Photo Film Co., Ltd. cannot accept liability for any incidental losses (such as the costs of photography or the loss of income from photography) incurred as a result of faults with this product.

■ Notes on Copyright

Images recorded using your digital camera system cannot be used in ways that infringe copyright laws without the consent of the owner, unless intended only for personal use. Note that some restrictions apply to the photographing of stage performances, entertainments and exhibits, even when intended purely for personal use. Users are also asked to note that the transfer of memory cards containing images or data protected under copyright laws is only permissible within the restrictions imposed by those copyright laws.

■ Liquid Crystal

If the LCD monitor or display panel is damaged, take particular care with the liquid crystal in the monitor or panel. If any of the following situations arise, take the urgent action indicated.

- If liquid crystal comes in contact with your skin
Wipe the area with a cloth and then wash thoroughly with soap and running.
- If liquid crystal gets into your eye
Flush the affected eye with clean water for at least 15 minutes and then seek medical assistance.

- If liquid crystal is swallowed
Flush your mouth thoroughly with water. Drink large quantities of water and induce vomiting. Then seek medical assistance.

■ Notes on Electrical Interference

If the camera is to be used in hospitals or aircrafts, please note that this camera may cause interference to other equipment in the hospital or aircraft. For details, please check with the applicable regulations.

■ Handling Your Digital Camera

This camera contains precision electronic components. To ensure that images are recorded correctly, do not subject the camera to impact or shock while an image is being recorded.

■ Trademark Information

- iMac and Macintosh are registered trademarks of Apple Computer, Inc.
- Windows is a registered trademark of the Microsoft Corporation of the U.S. registered in the U.S.A. and other countries. Windows is an abbreviated term referring to the Microsoft Windows Operating System.
- SmartMedia is a trademark of Toshiba Corporation.
- Other company or product names are trademarks or registered trademarks of the respective companies.

Camera Features and Accessories

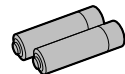
Camera Features

- Superb high-quality images from the 2.0 million effective pixels
- 1/2.7 inch square pixel CCD with RGB color filter (Number of total pixels: 2.11 million)
- Number of recorded pixels up to 1600 × 1200 pixels
- Music player functions
- Seamless digital 2.5× zoom photography and up to 5× zoom playback function
- Compact and lightweight body
- 1.8-inch 72,000 pixels color LCD monitor (D-TFD)
- Quick and responsive operation
- Wide-angle field of view (with Macro function)
- Automatic built-in flash with high-precision wide-range flash control sensor
- Manual photography mode that allows fine tuning of the camera settings
- Movie shooting function (320 × 240 pixels with sound)
- Voice captioning function for easy photography information recording
- Audio recording function
- Sound sync. mode for automatic picture taking in response to loud noises such as laughter
- Easy high-speed image file transfer via the USB connection
- Supports DPOF (Digital Print Order Format) for simple print ordering
- Conforms to the new standard for digital camera file system*

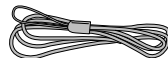
* Design rule for Camera File System

Accessories

- AA-size Nickel-Metal Hydride (Ni-MH) Batteries HR-3UF (2)



- Shoulder Strap (1)



- Remote Controller (1)



- Headphones (1)



- Battery Charger BC-NHS (1)



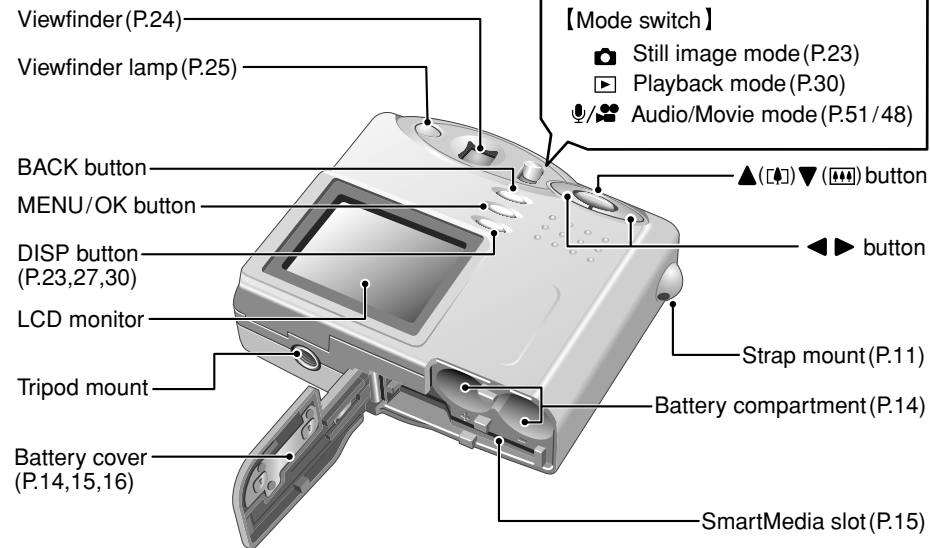
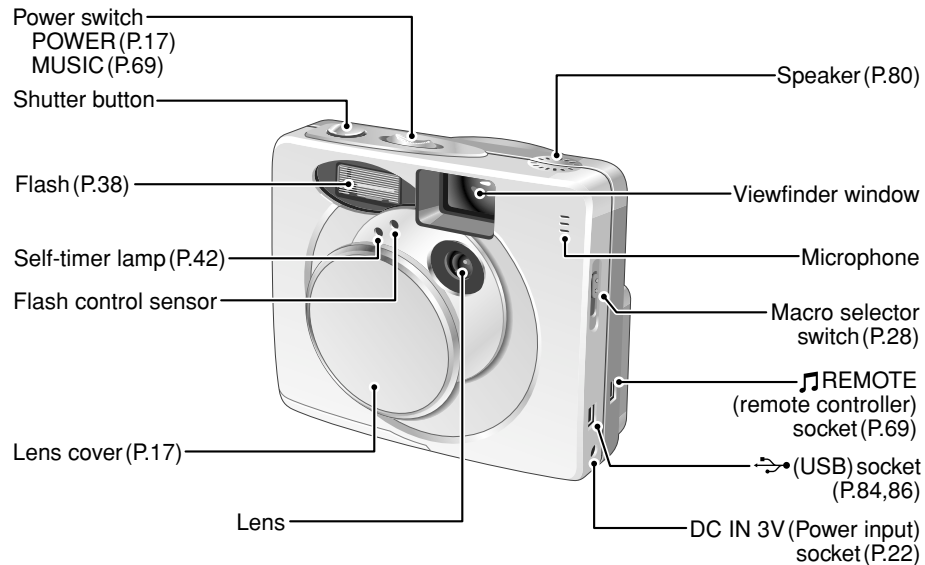
- USB Interface Set (1)

- CD-ROM: Software for FinePix MP (1)
- Special USB cable with Noise Suppression core (1)
- Software Quick Start Guide (1)

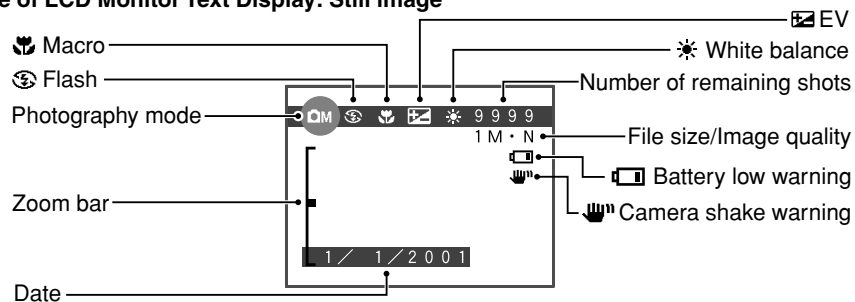
- Owner's Manual (this manual) (1)

Nomenclature

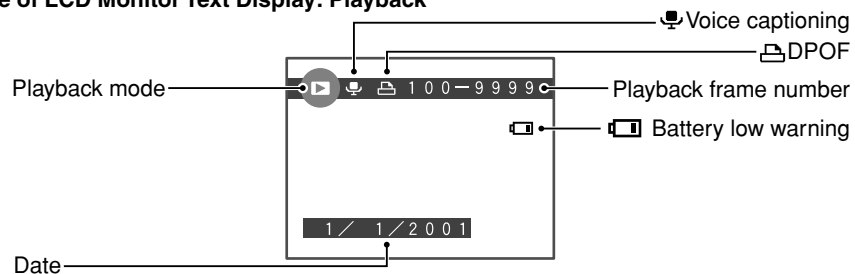
* Refer to the pages in parentheses for information on using the camera features.



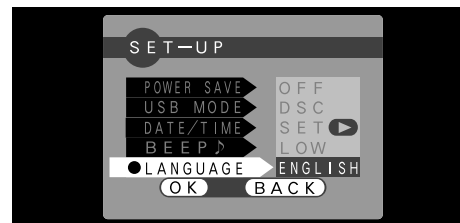
Example of LCD Monitor Text Display: Still image



Example of LCD Monitor Text Display: Playback

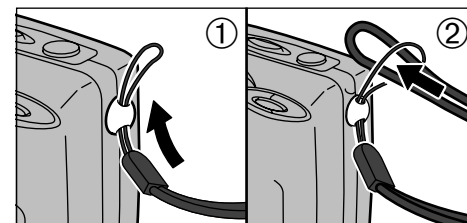


Selecting the Language



You can use the “SET-UP” screen on this camera to select “ENGLISH” or “FRANCAIS” as the “LANGUAGE” used for screen display (→P.81). The screens in this manual are shown in “ENGLISH”.

Attaching the Shoulder Strap

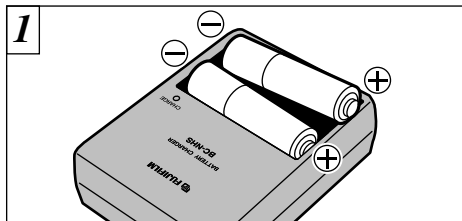


- ① Pass the loop of this cord on the end of the strap through the strap mount.
- ② Then pass the other end of the strap through the loop of the thin cord and pull the strap tight.

CHARGING AND LOADING THE BATTERIES

Batteries that Can Be Charged

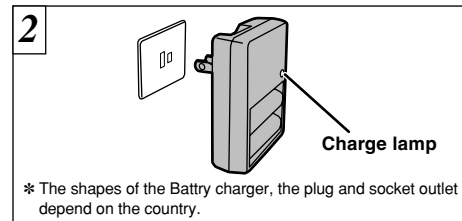
AA-size Ni-MH batteries
Fujifilm HR-3UF: 2 (supplied with the camera or sold separately)



Load the rechargeable batteries into the battery charger as indicated on the label.

- ⚠ If the terminals of Ni-MH (nickel-metal hydride) batteries are soiled, it may not be possible to charge them. To avoid possible problems, clean the battery terminals and charger terminals with a clean, dry cloth. (Clean the batteries and charger terminals with a clean, dry cloth the first time the batteries are charged. Then insert and remove the batteries from the charger several times prior to charging.)

⚠ Do not charge new and used batteries together.



* The shapes of the Battery charger, the plug and socket outlet depend on the country.

Plug the charger into a power outlet to begin charging. Charging ends after about 5 hours and the charging lamp goes off. Unplug the battery charger from the power outlet when it is not in use.

- ⚠ Fully discharged Ni-MH batteries take approximately 5 hours (1700 mAh) to recharge. Shorter charging times can be achieved using the Ni-MH/Battery Charger BCH-NH (→ P.91).

- ⚠ Ni-MH batteries are not fully charged at shipment and must be charged before being used. Newly purchased batteries or batteries that have been left unused for an extended period may not be fully charged. (This is indicated by the immediate display of the battery low warning and a low available shots/time for battery operation.) This is a normal characteristic of the batteries and does not indicate a fault. Repeatedly charging and using the batteries 3 or 4 times will enable you to fully recharge the batteries and increase the time for which the camera will operate using batteries.

- ⚠ If you repeatedly charge a Ni-MH battery before it is fully discharged, it will suffer from the "memory effect"*, causing the battery low warning to appear while there is still ample charge remaining in the battery. You can restore batteries to normal operation by running the batteries completely flat before charging them.

* Memory effect: A phenomenon whereby a battery displays the characteristic of appearing to have a reduced capacity.

- ⚠ See P.94-96 for notes on the batteries.

LOADING THE BATTERIES

Compatible batteries

AA-size Ni-MH batteries

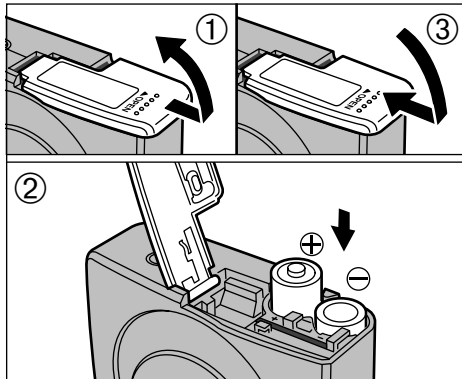
Fujifilm HR-3UF: 2 (supplied with the camera or sold separately)

- ⚠ You should carry a spare set of batteries (sold separately) when taking pictures.
- ⚠ Do not use different types of batteries or old and new batteries together.
- ⚠ You cannot use lithium, manganese or nickel-cadmium (Ni-Cd) batteries.

◆ Notes on Handling Alkaline Batteries ◆

Alkaline batteries should only be used in an emergency. Note the following when using alkaline batteries:

- The battery terminals should be wiped clean with a clean, dry cloth.
- Always switch the LCD monitor off (→P.27) before using alkaline batteries. Alkaline batteries cannot be used in Macro mode, Movie mode or Digital zoom mode.
- The available shots/time for battery operation are limited. The available shots/time for battery operation vary depending on the battery brand and the ambient temperature. At temperatures of +5°C (+40°F) and below, it may not be possible to take pictures or play back music.
- Because you are using the FinePix30i with the LCD monitor switched off, the power cuts out without a remaining battery low warning being displayed.



- ① Slide the battery cover out and lift it open.
- ② Insert the batteries correctly as indicated by the polarity icons.
- ③ Close the battery cover.

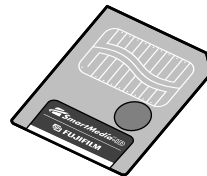
- ⚠ Do not apply excessive force to the battery cover.
- ⚠ Take care not to drop the batteries when you open or close the battery cover.
- ⚠ See P.94-96 for notes on the batteries.

LOADING THE SmartMedia™

SmartMedia™ (sold separately)

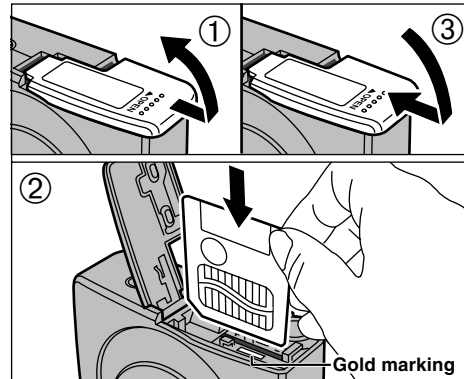
■ Only use 3.3V SmartMedia

MG-4S (4MB), MG-16SW (16MB, ID)
MG-8S (8MB), MG-32SW (32MB, ID)
MG-16S (16MB), MG-64SW (64MB, ID)
MG-32S (32MB), MG-128SW (128MB, ID)
MG-64S (64MB)



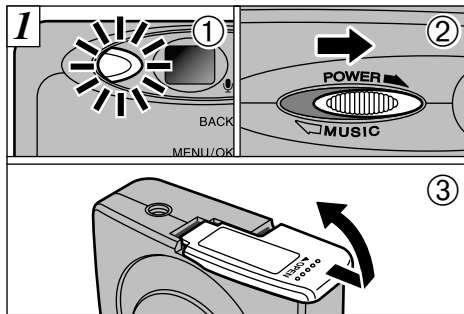
- ⚠ Image files cannot be recorded or erased if a write-protect sticker is affixed to the SmartMedia.
- ⚠ Operation of this camera is only guaranteed when it is used with FUJIFILM SmartMedia.
- ⚠ Some 3.3V SmartMedia are labelled as "3V" or "ID" cards.
- ⚠ See P.97-98 for notes on the SmartMedia.

A SmartMedia with ID is needed to use the music function.



- ① Check that the camera is switched off. Then hold the camera so that the battery cover faces upwards and slide the cover out to open it.
 - ② Push the SmartMedia firmly into the SmartMedia slot as far as it will go.
 - ③ Close the battery cover.
- ⚠ If you open the battery cover while the camera is switched on, the camera automatically switches off to protect the data on the SmartMedia.
 - ⚠ The SmartMedia will not slide fully into the slot if it is inserted facing the wrong way. Be careful not to apply undue force to the SmartMedia.

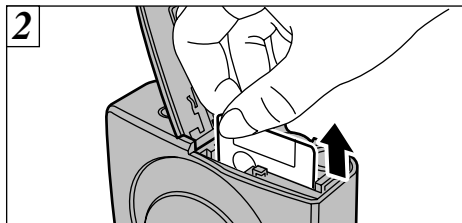
REMOVING THE SmartMedia™



- ① Check that the indicator in the viewfinder lamp is green (➔ P.25).
- ② Then switch the camera off.
- ③ Always ensure that the battery cover is facing upwards when you open it.

⚠ See P.17 for information on switching the camera on and off.

Never open the battery cover while the camera is still switched on as this could corrupt the image files on the SmartMedia or damage the SmartMedia itself.



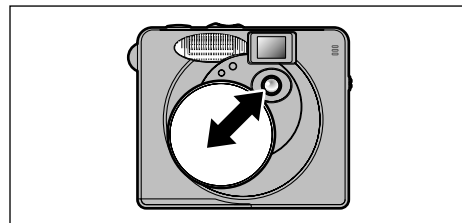
Grip the SmartMedia and pull it out, taking care that the batteries do not fall out of the camera.

⚠ To protect the SmartMedia, always store it in the special anti-static case.

◆ Printing Images and Downloading Images to a PC ◆

- See P.64, 90 for information on printing images.
- See P.83-89 for information on downloading images to a PC.

OPENING/CLOSING THE LENS COVER



Open and close the lens cover by sliding it down and up diagonally.

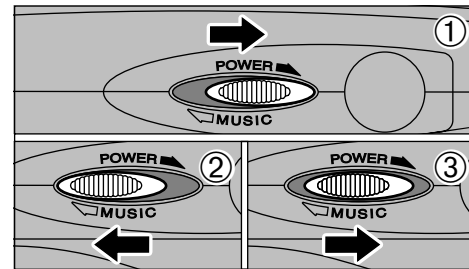
⚠ Slide the lens cover until it locks into place.

⚠ Take care not to touch the lens directly while the lens cover is open.

◆ Auto Power Off function ◆

If the camera is not used in any way for roughly 2 minutes, the Auto Power Off function always switches the camera off to reduce power consumption. You cannot disable this function. However, the Auto Power Off function does not operate in sound sync. mode (➔P.43), audio recording (➔P.51) or playback of audio recordings (➔P.58), or when the camera is connected via the USB interface (➔P.83).

SWITCHING ON AND OFF

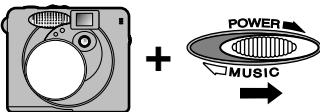

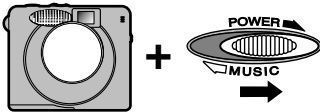
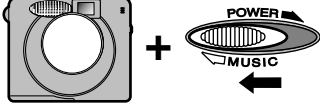


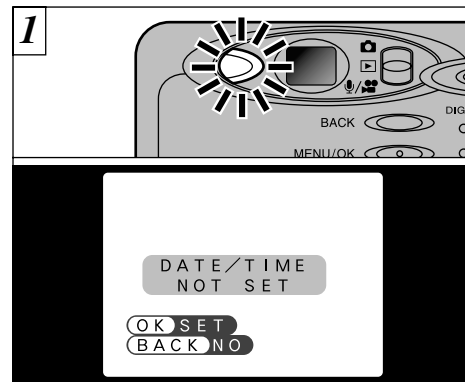
- ① To turn the camera on or off, slide the Power switch to "POWER".
- ② Sliding the Power switch to "MUSIC" allows you to use the camera as a music player.
- ③ When you do not want to listen to music, slide the Power switch to the middle position.

⚠ Note that you cannot use the FinePix30i as a camera when the Power switch is set to "MUSIC".

SWITCHING ON AND OFF

■ You can switch the camera on in different ways depending on how you want to use it.

	Do This	
<ul style="list-style-type: none"> ● To take pictures ● To switch between taking pictures and playing back images 		<p>Open the lens cover and then slide the Power switch to "POWER ".</p> <p>If the Auto Power Off function shuts the camera down while you are taking pictures (while the lens cover is open), use the Power switch to turn the camera back on.</p>
<ul style="list-style-type: none"> ● To play back images or sound (without taking pictures) ● To use the camera for audio recording (→P.51) 		<p>Switch the camera on without opening the lens cover.</p> <p>If you switch the camera on with the Mode switch (→P.9) set to "📷", the "⚠️ LENS COVER" warning is displayed. When this occurs, set the Mode switch to "▶️" or "🎵/🎧".</p>
<ul style="list-style-type: none"> ● To use the camera as a music player (→P.69) 		<p>Slide the Power switch to "🎵/🎧 MUSIC" without opening the lens cover.</p> <p>The camera does not switch on unless you connect the remote controller (→P.69) and play back some music.</p>

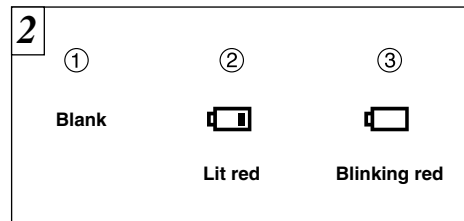


When you switch the camera on, the viewfinder lamp lights (green). If the date has been cleared, a confirmation message appears.

OK: The DATE/TIME setting screen appears (→P.21).

BACK: The camera remains in Still image, Audio/Movie or playback mode.

⚠️ If you do not set the date and time, this confirmation screen will appear each time you switch the camera on.



With the LCD monitor on, you can check the remaining charge in the battery.

① Batteries have ample charge (No indicator displayed).

② The batteries charge is low. Have a new set of batteries ready.

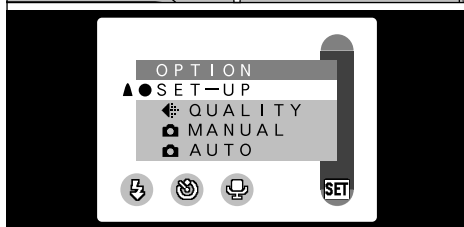
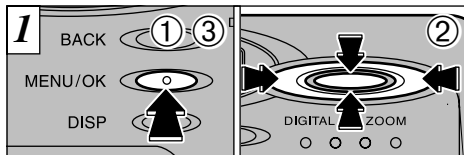
③ The batteries are exhausted. The display will shortly go blank and the camera will stop working. Replace or recharge the batteries.

⚠️ In Still Image mode, the LCD monitor stays off when you switch the camera on.

See P.27 for information on switching the LCD monitor on.

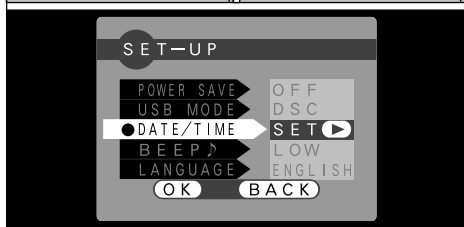
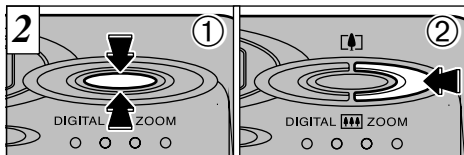
⚠️ If the batteries charge is depleted, you may not be able to switch the LCD monitor on.

SETTING THE DATE AND TIME

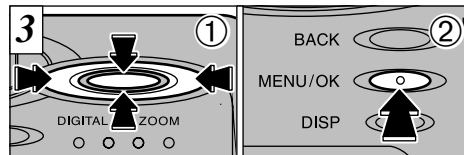


- ① Press the "MENU/OK" button to display the menu screen.
- ② Use "◀" or "▶" to select "OPTION", and then use "▲ (L)" or "▼ (R)" to select "SET-UP".
- ③ Press the "MENU/OK" button.

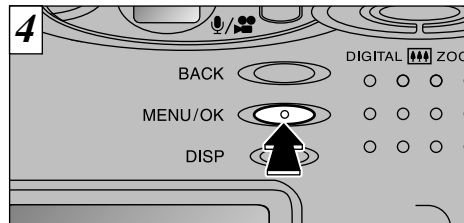
If the date was cleared and you selected "OK", proceed from step 3 (→P.21).



- ① The "SET-UP" screen appears. Use "▲ (L)" or "▼ (R)" to select "DATE/TIME".
 - ② Press "▶".
- ⚡ See P.78 for more information on the "OPTION" menu.
 - ⚡ If at least 10 minutes have passed since the AC power adapter was connected or the batteries inserted and date and time set, then those settings will be maintained for roughly 12 hours even when the camera has no power supply (when the AC power adapter is disconnected and the batteries are removed).



- ① Use "◀" or "▶" to select the desired item and then use "▲ (L)" and "▼ (R)" to correct the setting.
 - ② When you have finished setting the date and time, press the "MENU/OK" button to confirm the setting.
- ⚡ If you hold down "▲ (L)" or "▼ (R)", the numbers change continuously.
 - ⚡ When the time displayed passes "12:00:00", the AM/PM setting automatically switches.
 - ⚡ You cannot set the seconds. To set the time precisely, press the "MENU/OK" button when the time signal reaches zero.



The "SET-UP" screen reappears. Press the "MENU/OK" button to complete the settings.

- ⚡ The appearance of the date/time setting screen may differ. 2001.01.01.

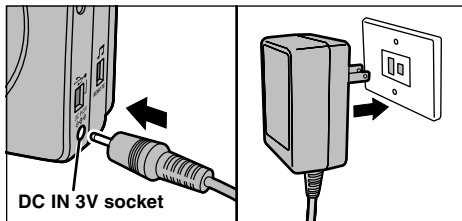
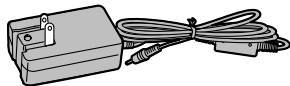
If the date was cleared and you selected "OK", the camera switches to Still image, Audio/Movie or playback mode without returning to the "SET-UP" screen.

USING THE OPTIONAL AC POWER ADAPTER

AC power adapter (optional)

Always use a FUJIFILM AC Power Adapter AC-3V (➔P.91).

Use the AC power adapter in situations when a loss of power will cause problems, such as during file downloading (via the USB connection). Using the AC power adapter also allows you to take pictures and play back images without worrying about depleting the batteries.



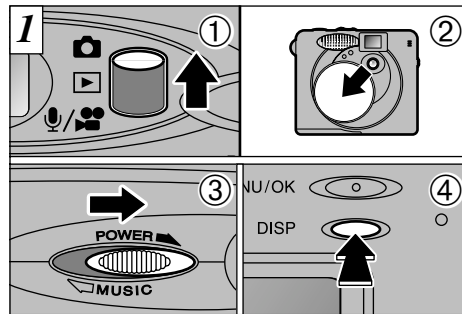
Check that the camera is switched off. Plug the AC power adapter connector into the “DC IN 3V” socket and then plug the AC power adapter into the power outlet.

- ⚠ The socket-outlet shall be installed near the equipment and shall be easily accessible.
- ⚠ The shape of the plug and socket-outlet depends on the country of use.

Connecting the AC power adapter does not allow you to charge the Ni-MH batteries. You must use the charger provided (➔P.12) or the optional charger (➔P.91) to charge Ni-MH batteries.

2 Basic Photography

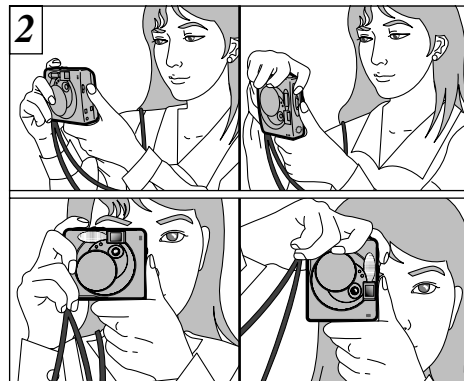
STILL IMAGE MODE TAKING PICTURES (📷 AUTO MODE)



- ① Set the Mode switch to “📷”.
- ② Open the lens cover (➔P.17).
- ③ Switch the camera on (➔P.17).
- ④ To use the viewfinder (excluding Macro mode), press the “DISP” button to switch the LCD monitor off (➔P.27).

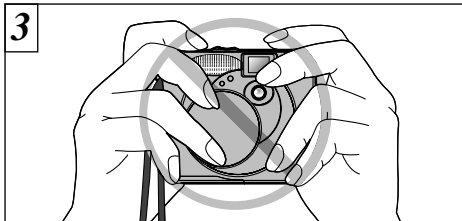
● **Focal range:** Approx. 60 cm (2.0 ft.) to infinity

- ⚠ If a “! CARD ERROR”, “! WRITE ERROR”, “! READ ERROR” or “! CARD NOT INITIALIZED” message appears, see P.99.



Loop the shoulder strap over your shoulder, brace your arms against your sides and hold the camera in both hands.

- ⚠ For close-up shots, use the Macro setting (➔P.28).
- ⚠ To minimize power consumption, use the viewfinder (switch the LCD monitor off) to take pictures.
- ⚠ The image will be blurred if the camera moves when taking the picture (camera shake). When shooting in low-light conditions, use the flash (➔P.38) or a tripod to prevent blurred images due to camera shake.



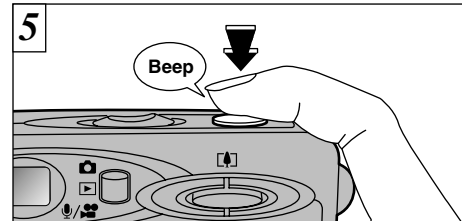
Be careful to ensure that the lens, flash and flash control sensor are not obscured by your hands or the camera strap.

- ⚠ If the lens, flash or flash control sensor is obscured by your fingers or the camera strap, you may not be able to obtain the correct brightness (exposure) for your shot.
- ⚠ Check that the lens is clean. If it is dirty, clean the lens as described on P.93.



Use the LCD monitor or viewfinder to locate your subject in the frame.

- ⚠ To frame your shot precisely, you should take the picture using the LCD monitor.
- ⚠ In some conditions it may be difficult to see your subject clearly on the LCD monitor (Such as in sunny weather outdoors or when you are shooting dimly lit scenes). In such situations, use the viewfinder to take the shot.



When you press the shutter button, the camera emits a short beep and takes the picture. The data is then recorded.

- ⚠ When you press the shutter button, there is a very short delay before the picture is actually taken.
- ⚠ The viewfinder lamp blinks orange while the flash is charging. If the LCD monitor is switched on, the screen may go dark for a moment. This is normal and does not indicate a fault.
- ⚠ The flash charging time may increase when the battery charge gets lower.
- ⚠ Since the amount of image data recorded is not fixed and varies depending on the subject (level of image detail, etc.), the number of available shots may not decrease after the image is recorded, or may decrease by 2.
- ⚠ See P.99-101 for information on the warning display.

Viewfinder lamp display

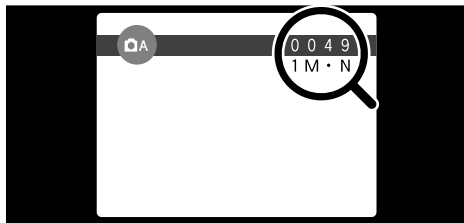
Color	Status	Meaning
Green	Lit	Ready to shoot
Orange	Lit	Image being recorded onto the SmartMedia.
	Blinking	Flash charging
Red	Blinking	<ul style="list-style-type: none"> ● SmartMedia warning No SmartMedia loaded, SmartMedia not formatted, incorrect format, write-protect sticker used, SmartMedia full, SmartMedia error. *When the LCD monitor is switched on, details of the warning are displayed on the monitor (→P.99-101).

During image recording, the viewfinder lamp glows orange and you cannot take pictures. Note also that switching the camera off or opening the battery cover during image recording could corrupt the image files.

Number of Available Shots

The number of available shots appears on the LCD monitor.

- See P.79 for information on changing the File Size and Quality settings.
- The factory default settings at shipment are 1M (File Size) and N (Quality: NORMAL).

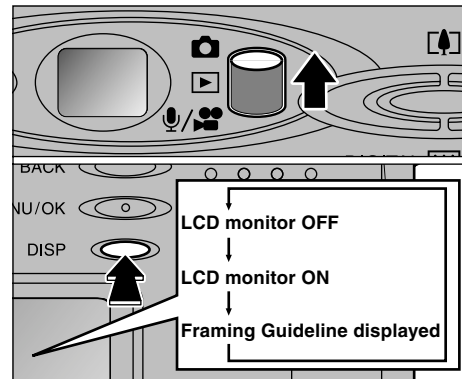


Standard number of shots per SmartMedia

The number of shots may increase or decrease slightly depending on the type of subject. Note also that the larger the SmartMedia capacity, the greater the discrepancy between the standard number of shots and the actual number of shots.

File Size	2M 1600 × 1200			1M 1280 × 960		VGA 640 × 480
	FINE	NORMAL	BASIC	FINE	NORMAL	NORMAL
Image Data Size	Approx. 770KB	Approx. 390KB	Approx. 200KB	Approx. 620KB	Approx. 320KB	Approx. 130KB
MG-4S (4MB)	4	9	19	6	12	30
MG-8S (8MB)	10	19	39	12	25	61
MG-16S/SW (16MB)	20	39	75	25	49	122
MG-32S/SW (32MB)	41	79	152	50	99	247
MG-64S/SW (64MB)	82	159	306	101	198	497
MG-128SW (128MB)	166	319	613	204	398	997

* The number of available shots are shown for formatted SmartMedia.



You can select the Framing Guide function in "A" still image mode. The mode shown on the LCD monitor switches each time you press the "DISP" button. Press the "DISP" button to display the framing guideline.

- The framing guideline is not recorded on the image.
- The lines in the scene frame roughly divide the recorded pixels into three parts horizontally and vertically. When the image is printed, the resulting print may be shifted slightly from the scene frame.

Scene

Use this frame when you want to position your main subject in the center of the frame or when you want to align your shot with the horizon. This feature provides a clear guide to the subject size and the overall balance of the shot so that you get exactly the shot you want.



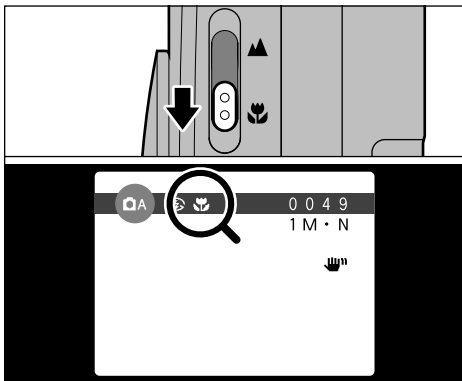
Selecting Macro mode allows you to take close-up shots. If the flash is set to “AUTO” or “Red-eye Reduction mode”, it is automatically set to “Suppressed Flash mode”.

Effective Photography Range:



Approx. 8 cm to 15 cm (3.1 in to 5.9 in.).


- Using the camera width (approx. 8.5 cm or 3.3 in.) as a guide, ensure that the distance to the subject is between 8 cm (3.1 in.) and 15 cm (5.9 in.). The camera will not focus on subjects outside this focal range.
- To use the flash, select the “↓ Forced Flash” or “S Slow Synchro” setting in the menu screen (→P.38-40). However, you may not be able to obtain the correct brightness (exposure) for your shot.
- When shooting in dark conditions, use a tripod to prevent camera shake.

If you use the viewfinder to take a picture in Macro mode, the field visible through the viewfinder does not match the field actually photographed because the viewfinder and lens are in different positions. Accordingly, you should use the LCD monitor to take pictures in Macro mode.

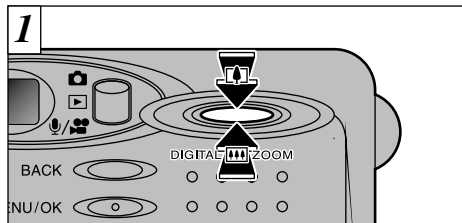


To switch to Macro mode, slide the Macro selector switch towards the Macro icon until it stops.

“” : The “” icon appears on the LCD monitor and you can take close-up shots.

“” : Macro mode is cancelled and the camera is ready for normal shooting (→P.23).

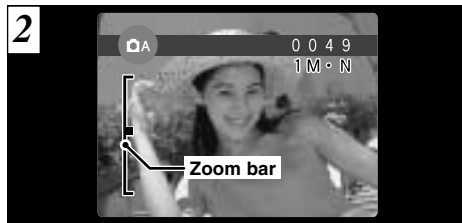
- The LCD monitor automatically switches on.
- You cannot switch the LCD monitor off.
- When you cancel Macro mode, the LCD monitor remains on.



You can use the digital zoom function for only “**1M**” and “**VGA**” settings. Note that the digital zoom only functions when you use the LCD monitor to take shots.

To zoom in on your subject, press “▲” (Tele).
To zoom out, press “▼” (Wide).

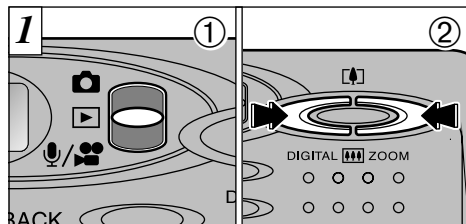
- You cannot use the digital zoom for recorded pixels of “**2M**”.
- See P.79 for information on changing the file size settings.



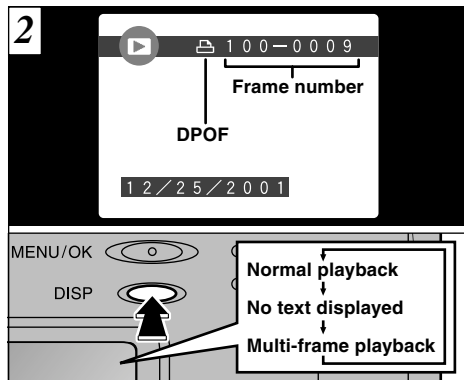
A “zoom bar” appears on the LCD monitor.

Digital zoom focal distance (35 mm camera equivalent)

- 1M**: Equivalent to approx. 38 mm-49 mm (approx. 1.3×)
- VGA**: Equivalent to approx. 38 mm-95 mm (approx. 2.5×)



- ① Set the Mode switch to "▶".
- ② You can use "▶" and "◀" to move forward and backward respectively through your images.



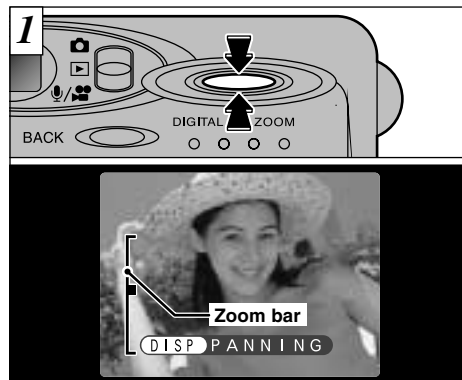
If you have specified DPOF settings (➔P.64), the "📄" icon is displayed. The LCD monitor display changes each time you press the "DISP" button.

- ⚠ When you set the Mode switch to "▶", the last image shot is displayed.

- ⚠ See P.78 and 80 for more information on adjusting the brightness of the LCD monitor.

◆ Images That Can be Viewed on the FinePix30i ◆

You can use this camera to view (excluding some uncompressed data) images recorded on a FinePix30i or images recorded onto a 3.3V SmartMedia using a FUJIFILM FinePix series, MX series or DX series digital camera.

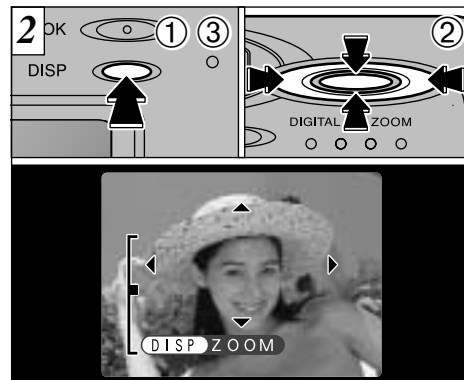


Pressing "▲ (📄)" or "▼ (📄)" during single-frame playback zooms in (enlarges) or out on a still image. When you use this function, a zoom bar is displayed.

● Zoom scales:

- 2M 1600 × 1200 pixels: Max. 5×
- 1M 1280 × 960 pixels: Max. 4×
- VGA 640 × 480 pixels: Max. 2×

- ⚠ Pressing "◀" or "▶" during zooming cancels zooming and moves to the next image.

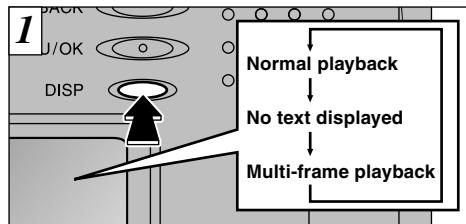


After you have zoomed in on your image,

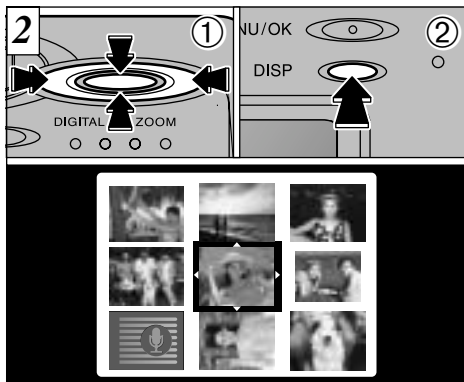
- ① Press the "DISP" button.
 - ② Use "▲ (📄)", "▼ (📄)", "◀" and "▶" to zoom in on different parts of the image.
 - ③ Press the "DISP" button again to revert to zoomed display.
- ⚠ Press the "BACK" button to return to normal unscaled display.
 - ⚠ You may not be able to use playback zoom for some images shot on other camera models.

This is useful for such things as checking the focus after you take a shot.

PLAYBACK MODE MULTI-FRAME PLAYBACK



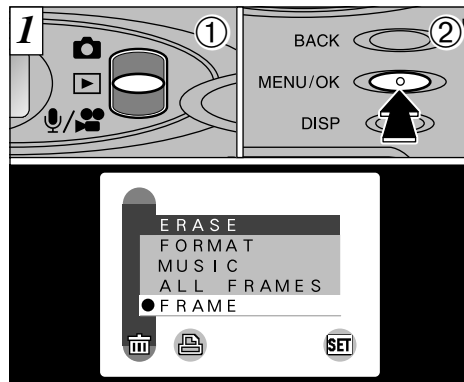
Pressing the “DISP” button during playback switches the LCD monitor to the next display mode. Press the “DISP” button several times to select multi-frame (9-frame) playback. You cannot display text during multi-frame playback.



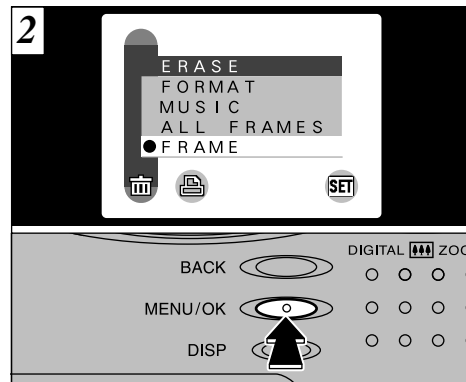
- ① Select a frame by using “◀”, “▶”, “▲ (L)” and “▼ (R)” to move the cursor (the orange box) to the desired frame. Press “▲ (L)” or “▼ (R)” several times to switch to the previous page or the next page.
- ② Press the “DISP” button to view the currently selected image at full size.

- ⚠ You cannot use multi-frame playback while a menu is displayed.
- ⚠ Playback zoom cannot be used with multi-frame playback.

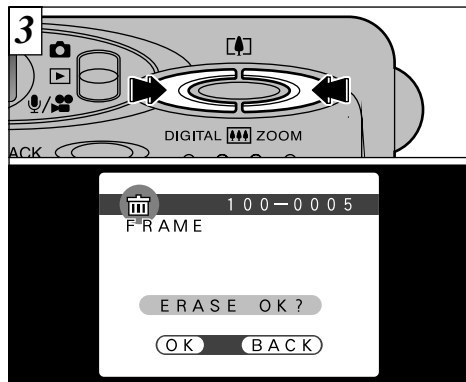
PLAYBACK MODE ERASING SINGLE FRAME



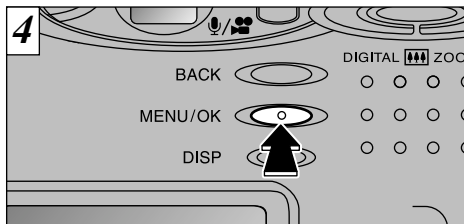
- ① Set the Mode switch to “▶”.
- ② Press the “MENU/OK” button to display the Menu screen on the LCD monitor.



Select “FRAME” in the “ERASE” menu and press the “MENU/OK” button.



Press “◀” or “▶” to display the image to be erased.



Press the “MENU/OK” button to erase the displayed image. When erasing is complete, the next image appears and the “ERASE OK?” message is displayed.

- ⚠ If the “! PROTECTED FRAME” message appears, you cannot delete the file. Use the other camera on which the file was protected to unprotect the file.
- ⚠ “! DPOF” is displayed for frames with DPOF settings and they cannot be erased (⇒P.101).

To continue erasing images, repeat the procedure from step 3.

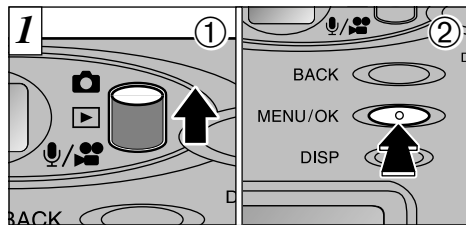
34 ⚠ Press the “BACK” button to cancel frame erasing.

The “Advanced Features Photography” section introduces a range of camera functions that you can access by setting the Mode switch to “📷” or “🎥/🎧”.

■ **Photography mode specifications**

Mode switch	Photography mode	Accessible menu settings	Factory default	Shared menu settings
📷 Still image	📷A AUTO (⇒P.23, 36) This is the easiest mode for taking pictures and can be used in a wide range of conditions.	⚡ Flash (⇒P.38) ⌚ Self-timer (⇒P.41) 🔊 Sound sync. (⇒P.43) 🗣️ Voice captioning (⇒P.44)	AUTO OFF — OFF	[SET] OPTION *See P.78 for more information on each of the settings.
	📷M MANUAL (⇒P.36) This mode allows you to set the “EV” and “White balance” settings.	⚡ Flash (⇒P.38) [EV] EV (Exposure Compensation) (⇒P.46) [WB] White balance (Selecting the Light Source) (⇒P.47)	AUTO 0 AUTO	
🎥/🎧 Audio/Movie	🎥 Movie (⇒P.48) This mode allows you to shoot up to 20 seconds of movie at a time.	—	—	
	🎧 Audio Recording (⇒P.51) This mode allows you to record sound.	—	—	

SELECTING AUTO OR M MANUAL



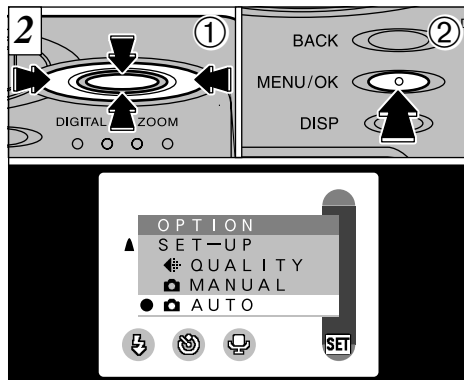
- 1 Set the Mode switch to “”.
- 2 Press the “MENU/OK” button to display the menu on the LCD monitor.

 AUTO

This is the easiest mode for taking pictures and can be used in a wide range of conditions.

 M MANUAL

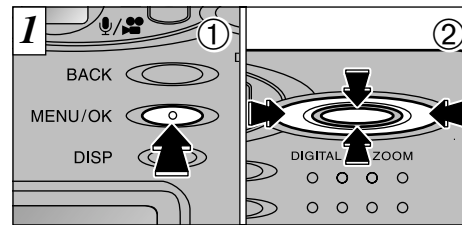
This mode allows you to set the “EV” and “White balance” settings.



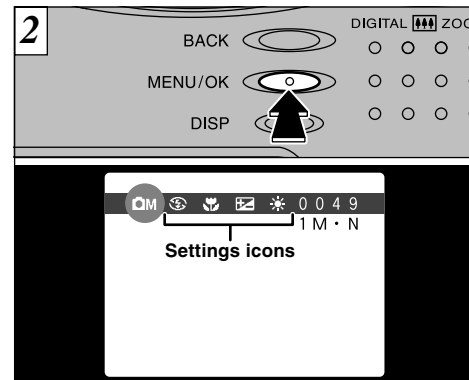
- 1 Use “ (L)”, “ (R)”, “” and “” to select “ AUTO” or “ MANUAL” from the “ SET-UP” menu.
- 2 Press the “MENU/OK” button to confirm the selection.

See P.78-82 for more information on the “SET-UP”, “FILE SIZE”, “LCD BRIGHTNESS” settings.

PHOTOGRAPHY MENU OPERATION



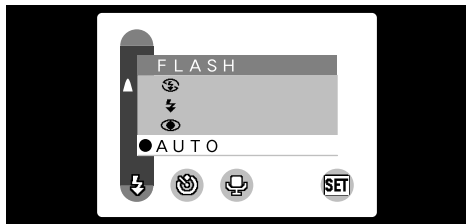
- 1 Press the “MENU/OK” button to display the menu.
- 2 Use “” and “” to select the menu item and “ (L)” and “ (R)” to change the setting.



Press the “MENU/OK” button to confirm the selection.

When you validate the settings, the respective icons appear at the top of the screen.

The settings available in the menu screen differ depending on the still image mode. See P.35 for details.



AUTO Auto Flash Mode

Use this mode for ordinary photography. The flash fires automatically as required by the shooting conditions.

! You cannot use this setting in Macro (close-up) photography.



👁 Red-Eye Reduction

Use this mode to ensure that the subject's eyes appear natural when photographing people in low-light conditions. The flash fires automatically as required by the photography conditions. The flash fires a pre-flash just before the picture is taken and then fires again to take the actual picture.

! You cannot use this setting in Macro (close-up) photography.

◆ **Red-Eye Effect** ◆

When you use the flash to photograph people in low-light conditions, their eyes sometimes appear red in the picture. This is caused by the light of the flash reflecting off the inside of the eye. Use Red-Eye Reduction flash to effectively minimize the likelihood of the red-eye effect.

- Take the following measures also to make Red-Eye Reduction more effective :
- Get the subjects to look at the camera.
 - Get as close as possible to the subjects.



⚡ Forced Flash

Use this mode to photograph backlit scenes, such as a subject against a window or in the shade of a tree, or to obtain the correct colors when you are shooting under lighting such as fluorescent tubes. In this mode, the flash fires in bright as well as dark conditions.

This mode can be selected in the "DA • DM" still image modes. Use the flash mode that best suits your shot.

- **5 modes:** "AUTO, 👁, ⚡, 📷 and S⚡"
- **Effective flash range (in "DA AUTO" mode):**
Approx. 0.6 m to 3 m (2.0 ft. to 9.8 ft.)

- ! When you select a flash mode, you may find that the displayed image disappears and the screen goes dark because the flash is charging. In this event, the viewfinder lamp flashes orange.
- ! The flash charging time may increase if the charge remaining in the batteries is low.
- ! If you use the flash in very dusty environments or when it is snowing, the flash may reflect off snowflakes or floating dust particles so that they appear as glowing white dots on your image.



⚡ Suppressed Flash

Use this mode for photography using indoor lighting, for shots taken through glass, and for photography in venues such as theaters or at indoor sporting events where the distance is too great for the flash to be effective. When you use Suppressed Flash, the Automatic White Balance function (→P.109) operates so that natural colors are captured along with the ambience of the available light.

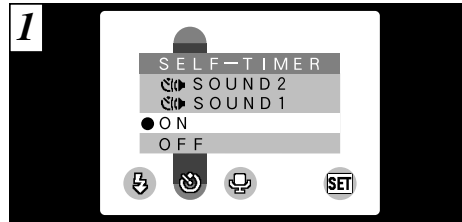
- ⚠ If you are shooting in Suppressed Flash mode in dark conditions, use a tripod to prevent camera shake.
- ⚠ See P.101 for information on the camera shake warning.



⚡ S Slow Synchro

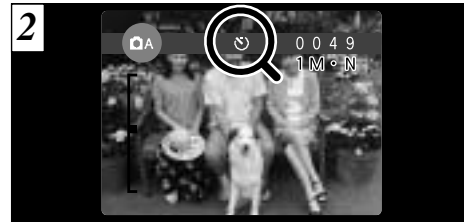
This is a flash mode that uses a slow shutter speed. This allows you to take pictures of people at night that clearly show both your subjects and the night time backdrop.

- ⚠ The image may be overexposed when you shoot bright scenes.
- ⚠ Because a slow shutter speed is used, a tripod should be used to prevent camera shake.



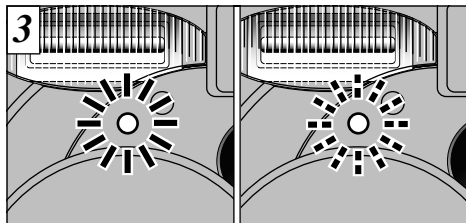
This mode can be selected in the "QA" still image mode. In this mode, a timer runs for roughly 10 seconds before the shutter is released. Use this mode for shots such as photographs of yourself. See P.43 for more information on "SOUND SYNC."

- ⚠ The self-timer is automatically cancelled in the following situations:
 - When you take a picture.
 - When you switch from the "QA" photography mode to another mode.
 - When the camera is switched off.

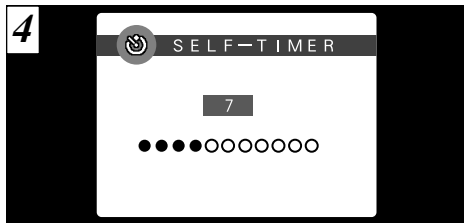


Locate the subject in the LCD monitor or viewfinder and frame the shot. Then press the shutter button to trigger the self-timer.

- ⚠ Do not stand in front of the camera when you press the shutter button as this will result in an incorrect brightness (exposure) setting for the shot.
- ⚠ The LCD monitor may go dark for a moment when you press the shutter button. This is normal and does not indicate a fault.



The self-timer lamp lights steadily for approximately 5 seconds, blinks for another 5 seconds and then takes the shot.



The LCD monitor counts down the time until the shot is taken. Self-timer mode is automatically cancelled after each shot.

SOUND SYNC.

This is a self-activated photography mode in which the camera responds automatically to loud sounds such as laughter or singing that might occur during a party.

- **SOUND 1:** The shutter releases in response to the sound of laughter or singing.
- **SOUND 2:** The shutter releases in response to the sound of laughter or singing that continues for longer than in "SOUND 1" mode. Try this mode if you find that the shutter releases too frequently in "SOUND 1" mode.

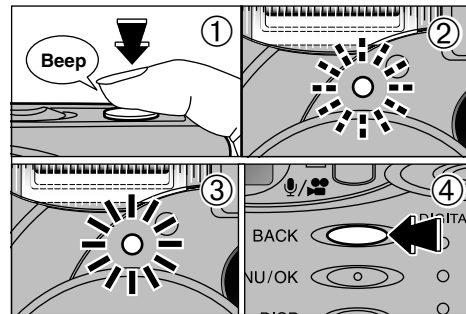
- ⚠ You cannot select a sound sync. mode when voice captioning is set to "ON".
- ⚠ Voice captioning (➔P.44), Power save (➔P.82) are disabled.

Available time using the battery

(using the batteries provided when fully charged)

LCD monitor on	Approx. 60 min.
LCD monitor off	Approx. 150 min.

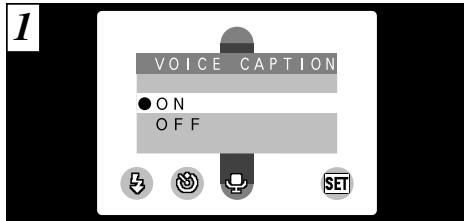
* Operation times under FUJIFILM test conditions.



- ① Sound-synchronized photography begins when you press the shutter button.
- ② The self-timer lamp blinks while sound-synchronized photography is running.
- ③ The self-timer lamp stops blinking and stays lit when the shot is taken.
- ④ To end sound-synchronized photography, press the "BACK" button.

- ⚠ If you plan to use sound sync. mode for an extended period, you should switch the LCD monitor off before shooting begins. Press the "DISP" button twice (➔P.27).
- ⚠ If you are getting "red-eye" shots due to the photography conditions, set the flash to red-eye reduction mode (➔P.39).

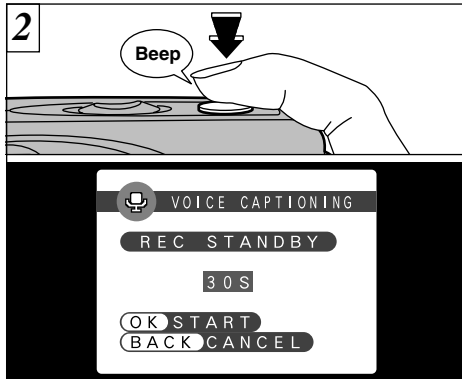
- ⚠ To stop the self-timer once it has started running, press the "BACK" button.



1 This mode can be selected in the “**QA**” still image mode. You can use this function to add a voice caption (comment) up to 30 seconds long to an image immediately after you take the shot.

- **Recording format:** WAVE (⇒P.109)
PCM recording format
Audio file size: Approx. 240 KB
(for a 30-second voice caption)

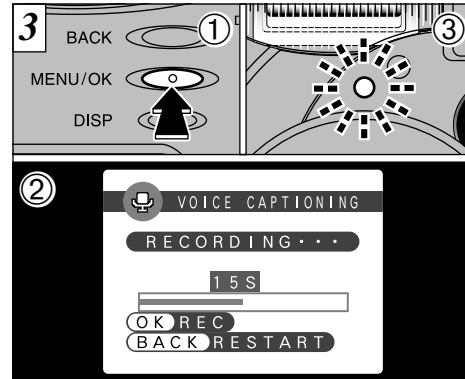
- ⚠ You cannot select voice captioning when a sound sync. mode is set to “ON”.
- ⚠ The sound recording time may be shorter than 30 seconds depending on the available space on the SmartMedia.
- ⚠ Even if the LCD monitor is switched off, it automatically switches on when you take a picture using the Voice captioning function. The LCD monitor switches off again when audio recording ends.



2 Take a picture as normal. The “**REC STANDBY**” message then appears on the LCD monitor.

- ⚠ If you do not want to record a voice caption, press the “BACK” button. Note that the image will still be recorded.

Face the microphone (⇒P.8) on the front of the camera to record your comments. Hold the camera roughly 20 cm (7.9 in.) away for the best results.

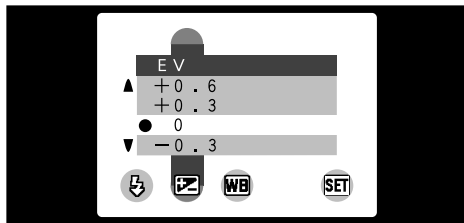


- 1** Press the “MENU/OK” button to start recording the voice caption.
- 2** During voice captioning, the remaining time is shown on the LCD monitor and the self-timer lamp blinks.
- 3** When the time remaining reaches 5 seconds, the self-timer lamp starts blinking quickly.



4 When you have recorded 30 seconds of comment, the “**FINISH**” message appears on the LCD monitor.

- **To finish:**
Press the “MENU/OK” button.
- **To re-record your comment:**
Press the “BACK” button.



This mode can be selected in the “**OM**” still image mode.

Use the Brightness setting to obtain the optimum image brightness (exposure) when the subject is much brighter or darker than the background.

- **Correction range:** 11 steps
(-1.5 EV to +1.5 EV in 0.3 EV increments)
See P.108 for information on EV.

ⓘ The Brightness setting is disabled in the following situations:

- When the flash is used in Auto or Red-Eye Reduction mode.
- When dark scenes are shot in Forced Flash mode.

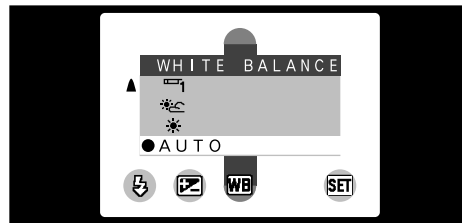
◆ Subjects for Which Exposure Adjustment is Particularly Effective ◆

Guide to using + (positive) compensation

- Copying of printed text (black characters on white paper) (+1.5 EV)
- Backlit portraits (+0.6 EV to +1.5 EV)
- Very bright scenes (such as snowfields) and highly reflective subjects (+0.9 EV)
- Shots made up predominantly of sky (+0.9 EV)

Guide to using - (negative) compensation

- Spotlit subjects, particularly against dark backgrounds (-0.6 EV)
- Copying of printed text (white characters on black paper) (-0.6 EV)
- Scenes with low reflectivity, such as shots of pine trees or dark foliage (-0.6 EV)



This mode can be selected in the “**OM**” still image mode.

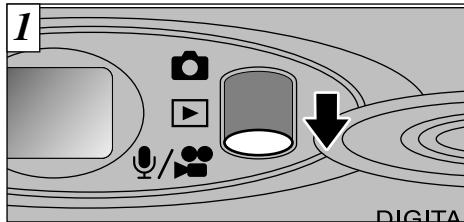
In Auto mode, the correct white balance may not be obtained for subjects such as close-ups of people’s faces and shots taken under a special light source.


Change the white balance setting when you want to take a picture with the correct balance. See P.109 for more information on the white balance.

AUTO: Automatic adjustment
(Shooting to show the ambience of the light source)

- ☀ : Shooting outdoors in fine weather
- ☁ : Shooting in shade
- ☀₁ : Shooting under “Daylight” fluorescent lamps
- ☀₂ : Shooting under “Warm White” fluorescent lamps
- ☀₃ : Shooting under “Cool White” fluorescent lamps
- 💡 : Shooting in incandescent light

* The white balance setting is ignored when the flash is used. To achieve the desired effect in your shot, set the flash to Suppressed Flash mode (➡P.40).



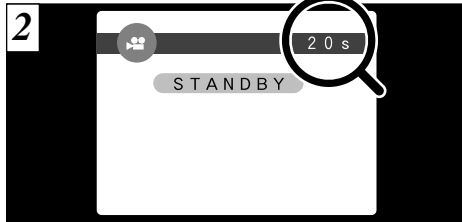
Set the Mode switch to “”.


Movie

This mode allows you to shoot up to 20 seconds of movie at a time.

- **Movie format:** Motion JPEG (⇒P.108)
320 × 240 pixels
10 frames per second
With sound

- ⚠ Select Macro mode for close-up shots (⇒P.28).
- ⚠ The shooting time per shot may be shorter than 20 seconds depending on the available space on the SmartMedia.
- ⚠ You cannot switch the LCD monitor off in this mode.
- ⚠ In some cases, playback may not be possible on other camera models.

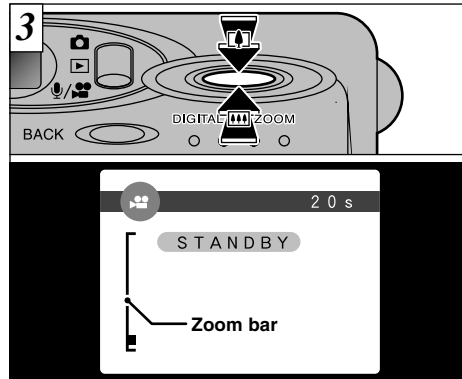


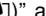

The available shooting time and the “ STANDBY” message are shown on the LCD monitor.

■ SmartMedia standard shooting time

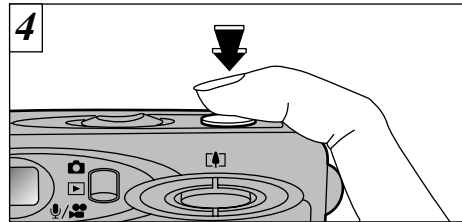
SmartMedia capacity	Available shooting time
MG-4S (4MB)	Approx. 23 sec.
MG-8S (8MB)	Approx. 47 sec.
MG-16S/SW (16MB)	Approx. 94 sec.
MG-32S/SW (32MB)	Approx. 191 sec.
MG-64S/SW (64MB)	Approx. 385 sec.
MG-128SW (128MB)	Approx. 774 sec.

* These movie shooting times are for newly formatted SmartMedia.



You can use “ (□)” and “ (▣)” to zoom in and out. A “zoom bar” is displayed on the LCD monitor.

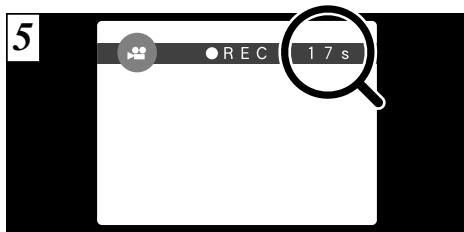
- **Digital zoom focal distance (35 mm camera equivalent)**
Approx. 38 mm to 95 mm
Max. zoom scale: 2.5×



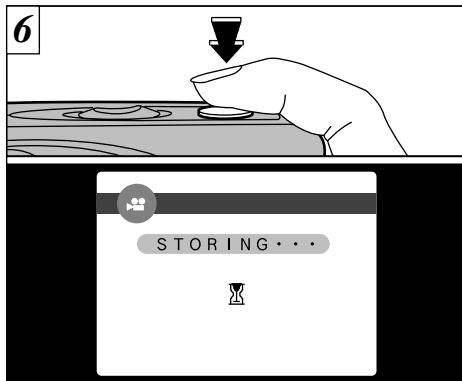
When you press the shutter button, the camera starts shooting.

- ⚠ When you press the shutter button, there is a very brief delay before the camera starts shooting.
- ⚠ You do not need to hold down the shutter button.
- ⚠ The white balance is fixed during shooting, but the exposure varies automatically to suit the scene being shot.

The white balance is set automatically when you press the shutter button.

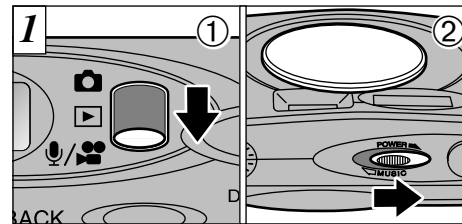



During shooting, “●REC” appears on the LCD monitor with a counter showing the remaining time displayed in the top-right corner.



If you press the shutter button during shooting, shooting ends and the movie is stored on the SmartMedia.

- ⚠ The time required to record a 20 second movie (roughly 3 MB) is approximately 3 seconds.
- ⚠ If you end shooting immediately after you start shooting, only 3 seconds of movie is shot.



- ① Set the Mode switch to “/”.
- ② The lens cover is closed when you switch the camera on.

Audio Recording

This mode allows you to record approximately 4 hours of sound at a time (using a MG-128SW).

● **Recording format:** WAVE (⇒P.109)

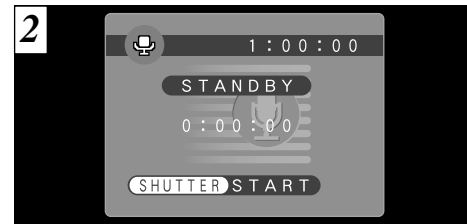
PCM recording format

- ⚠ Take care not to block the microphone (⇒P.8) with your fingers, etc.

■ **Available recording time using batteries**
(using the batteries provided when fully charged)

LCD monitor on	Approx. 80 min.
LCD monitor off	Approx. 240 min.

* To record sound for long periods, you should use the AC Power Adapter AC 2V.



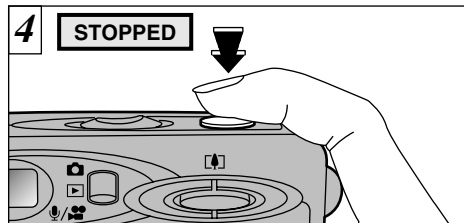
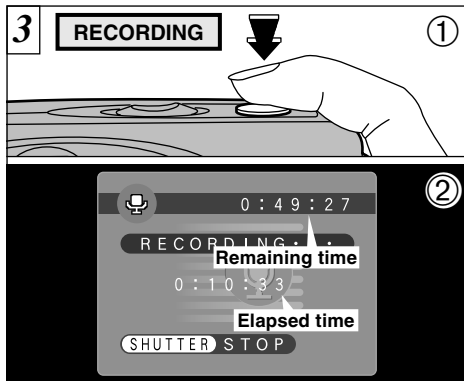
The available audio recording time is shown in the top-right corner of the LCD monitor, while the elapsed recording time and the “STANDBY” message are shown in the center of the LCD monitor.

- ⚠ To switch the LCD monitor off, press the “DISP” button before you begin audio recording.

■ **Standard audio recording times for SmartMedia**

SmartMedia capacity	Available recording time
MG-4S (4MB)	Approx. 8 min.
MG-8S (8MB)	Approx. 16 min.
MG-16S/SW (16MB)	Approx. 33 min.
MG-32S/SW (32MB)	Approx. 67 min.
MG-64S/SW (64MB)	Approx. 135 min.
MG-128SW (128MB)	Approx. 272 min.

- * These audio recording times are for newly formatted SmartMedia.
- * The maximum length of the audio recording may be shorter than 4 hours depending on the available space on the SmartMedia.



Press the shutter button during audio recording to stop recording.

- ① Depressing the shutter button starts audio recording.
 - ② During recording, counters on the LCD monitor show the elapsed time and remaining time, and the viewfinder lamp blinks green.
- ! You do not need to hold down the shutter button.
 - ! Once the remaining time runs out, audio recording automatically stops.
 - ! The Auto Power Off function is disabled during audio recording.

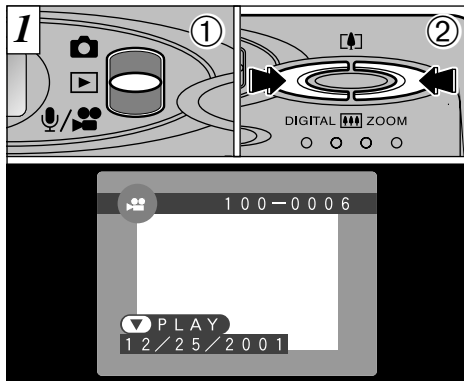
- ! Even if you press the shutter button to end audio recording immediately after recording starts, approximately 3 seconds of sound will be recorded.

The “Advanced Features Playback” section introduces a range of playback functions that you can access by setting the Mode switch to “▶”.

■ Playback mode menu

File to be Played Back	Still Image	Movie (Video)	Audio Recording
Available playback menu settings	ERASE (→P.60) DPOF (→P.64) OPTION (→P.78)	ERASE (→P.60) — OPTION (→P.78)	ERASE (→P.60) — OPTION (→P.78)

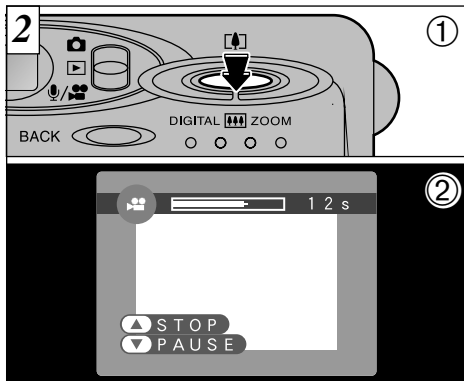
PLAYING BACK MOVIES



- ① Set the Mode switch to “”.
- ② Use “” or “” to select the movie file.

⚠ Movies cannot be played back using multi-frame playback. Use the “DISP” button to revert to normal playback.

Movies are displayed somewhat smaller than still images.



- ① Press “ (▶)” to play the movie.
- ② The LCD monitor shows the playback time and a playback progress bar.

⚠ If the subject of the movie is very bright, white streaks may appear on the image during playback. This is normal and is not a fault.

■ Playing back movies

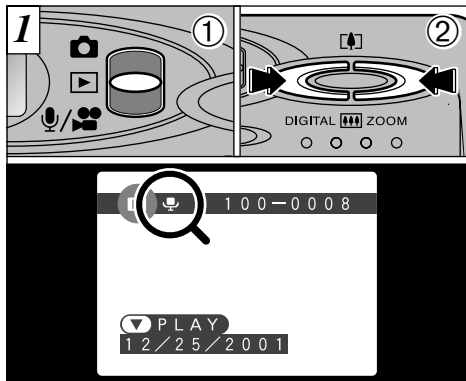
	Control	Description
Playback		The movie automatically stops when playback ends.
Pause/Resume		Pauses the movie during playback. Press this button again to resume playback.
Stop		Stops playback. * Press “” or “” while movie playback is stopped to go back to the previous file or advance to the next file respectively.
Fast forward/Rewind	 Rewind Fast forward	Press these during playback to skip forwards or backwards through the movie.
Skip playback	 When paused	<ul style="list-style-type: none"> • Each time you press “” or “” when the movie is paused, the movie advances or goes back one frame. • Hold down the button to move through the frames quickly.

* Refer to the Software Quick Start Guide (provided) for information on playing back movies on your PC.

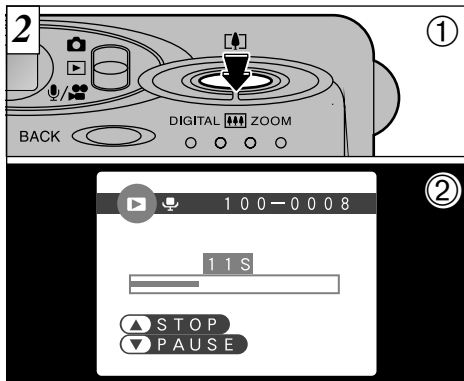
◆ Compatible movie files ◆

The FinePix30i can play back movie files shot on a FinePix30i and movie files up to 20 seconds long that were shot on a FUJIFILM digital camera and stored on a 3.3V SmartMedia. If you attempt to play back a movie that is longer than 20 seconds, the “” message appears and playback fails.

PLAYING BACK VOICE CAPTIONS



- ① Set the Mode switch to "▶".
- ② Use "◀" or "▶" to select an image file that has a voice caption.



- ① Press "▼(■)" to play the voice caption.
- ② The LCD monitor shows the playback time and a playback progress bar.

- ⚠ Take care not to block the speaker.
- ⚠ If the sound is difficult to hear, adjust the volume (→P.78, 80).

■ Playing back voice captions

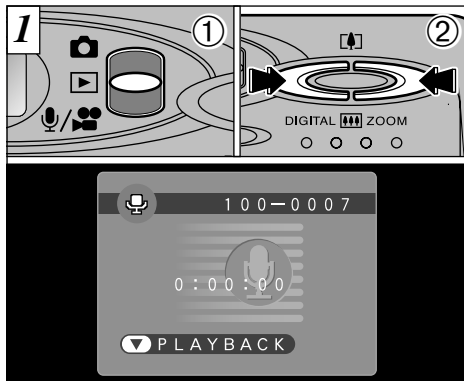
	Control	Description
Playback		The voice caption automatically stops when playback ends.
Pause/Resume		Pauses the voice caption during playback. Press this button again to resume playback.
Stop		Stops playback. * Press "◀" or "▶" while voice caption playback is stopped to go back to the previous file or advance to the next file respectively.
Fast forward/Rewind		Press these during playback to skip forwards or backwards through the voice caption. * These buttons do not function while playback is paused.

* Refer to the Software Quick Start Guide (provided) for information on playing back voice captions on your PC.

◆ Compatible voice caption files ◆

The FinePix30i can play voice caption files recorded on a FinePix30i and voice caption files up to 30 seconds long that were recorded on a FUJIFILM digital camera and stored on a 3.3V SmartMedia.

PLAYING BACK AUDIO RECORDINGS



- ① Set the Mode switch to “▶”.
- ② Use “◀” or “▶” to select a voice file.

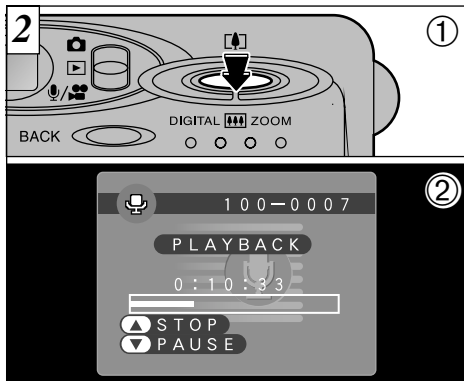
⚠ You cannot play back audio recordings using multi-frame playback. Use the “DISP” button to revert to normal playback.

■ Available playback time using batteries (using the batteries provided when fully charged)

LCD monitor on	Approx. 80 min.
----------------	-----------------

58

“🎤” is displayed on the screen.



- ① Press “▼(🎤)” to play the audio recording.
- ② The LCD monitor shows the playback time.

- ⚠ Take care not to block the speaker.
- ⚠ If the sound is difficult to hear, adjust the volume (→P.78, 80).

■ Playing back audio recordings

	Control	Description
Playback		The audio recording automatically stops when playback ends.
Pause/Resume		Pauses the audio recording during playback. Press this button again to resume playback.
Stop		Stops playback. * Press “◀” or “▶” while audio recording playback is stopped to go back to the previous file or advance to the next file respectively.
Fast forward/Rewind		Hold down the respective button for about a second to fast forward or rewind the recording. * These buttons function in the same way when playback is paused.

* Refer to the Software Quick Start Guide (provided) for information on playing back audio recordings on your PC.

◆ Compatible audio files ◆

On the FinePix30i, you can play back voice files that were recorded on the FinePix30i and voice files recorded onto 3.3 V SmartMedia using other FUJIFILM digital cameras (excluding the FinePix50i).

* If you attempt to play back voice files recorded on a FinePix50i, the “! READ ERROR” message appears and playback fails.

4

59

FRAME

Erase only the selected file.

- ! The file for which “! PROTECTED FRAME” was displayed cannot be erased. Unprotect the frame using the camera on which the protection was first applied.
- ! “! DPOF” is displayed for frames with DPOF settings and they cannot be erased (→ P.101).

ALL FRAMES

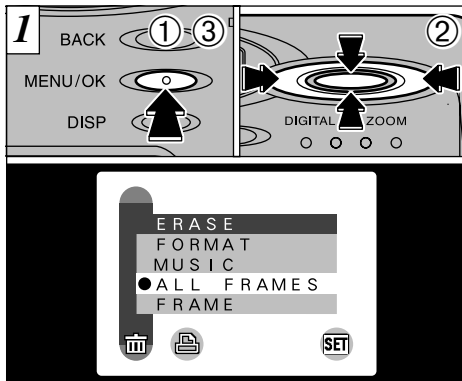
All files are erased except those that are protected or that have DPOF settings. Copy any files that you want to keep to your PC beforehand.


FORMAT

Formatting erases all the files. Take particular care when formatting a SmartMedia as this procedure also erases all protected files and all files with DPOF settings. Copy any files that you want to keep to your PC beforehand.

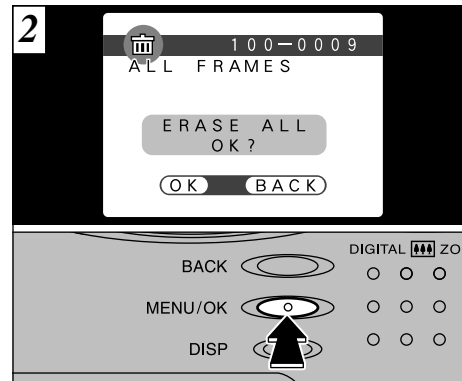
- ! Formatting also erases protected files.

- ! If a “! CARD ERROR”, “! WRITE ERROR”, “! READ ERROR” or “! CARD NOT INITIALIZED” message appears, see P.99, 100.



- ① Press the “MENU/OK” button to display the menu.
- ② Use “◀” or “▶” to select “ ERASE” and then use “▲ (L)” or “▼ (H)” to select “FRAME”, “ALL FRAMES” or “FORMAT”.
- ③ Press the “MENU/OK” button.
- ! Press the “BACK” button to exit the menu.

Formatting erases all the data on the SmartMedia, including protected files.



A confirmation message appears. In “FRAME” mode, use “◀” or “▶” to select the file and then press the “MENU/OK” button. When using “ALL FRAMES” or “FORMAT”, press the “MENU/OK” button.

- ! To cancel the frame erase procedure, press the “BACK” button.

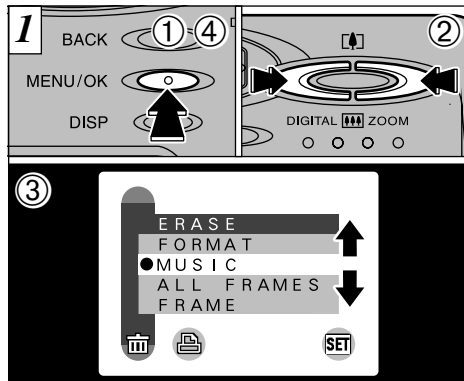
PLAYBACK MENU ERASING MUSIC


MUSIC TRACK


Erase just the selected music track.

ALL MUSIC TRACKS

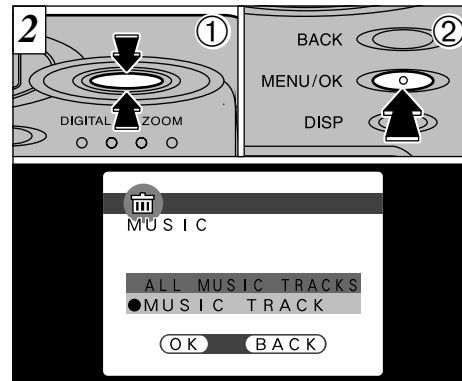
Erase all the music tracks.



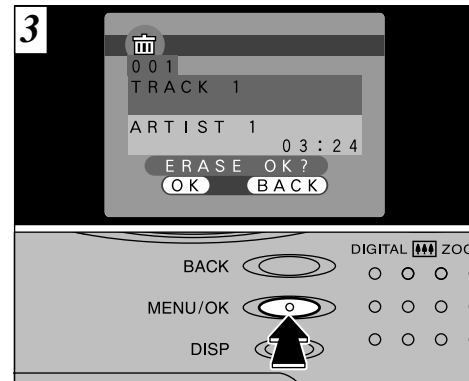
- 1 Press the "MENU/OK" button to display the menu on the LCD monitor.
- 2 Use "◀" or "▶" to select " ERASE".
- 3 Press "▲(□)" or "▼(▣)" to select "MUSIC".
- 4 Press the "MENU/OK" button.

 Press the "BACK" button to exit the menu.


Formatting erases all the data on the SmartMedia.


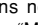


- 1 Press "▲(□)" or "▼(▣)" to select "MUSIC TRACK" or "ALL MUSIC TRACKS".
- 2 Press the "MENU/OK" button.



A confirmation message appears. For "MUSIC TRACK", use "◀" or "▶" to select the track you want to erase and then press the "MENU/OK" button. To use "ALL MUSIC TRACKS", press the "MENU/OK" button.

 To cancel the music track erase procedure, press the "BACK" button.

 If the media contains no music files, " ERASE" cannot be selected for "MUSIC".



DPOF stands for Digital Print Order Format and refers to a format that is used for recording printing specifications for images shot using a digital camera on media such as SmartMedia. The recorded specifications include information on which frames are to be printed.

This section gives a detailed description of how to order your prints with the FinePix30i. On the FinePix30i, you can specify only one print per image in the DPOF settings.

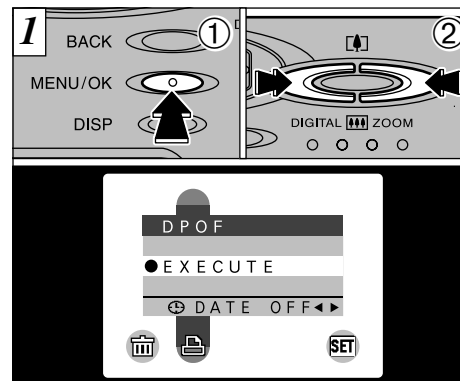
- * Note that some printers do not support date and time imprinting or specification of the number of prints.
- * Note that the warnings shown below may be displayed while you are specifying the prints.

! DPOF (→P.101)

If the “! DPOF” message appears, you cannot erase the frame. Cancel the “DPOF” settings and then try again.

! DPOF FILE ERROR (→P.101)

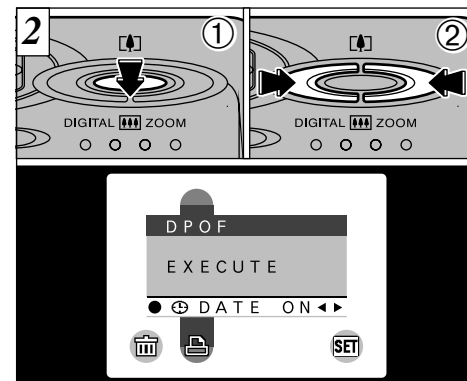
Up to 999 frames can be specified on the same SmartMedia.



This function allows you to select whether or not the date of shooting is included on the print.

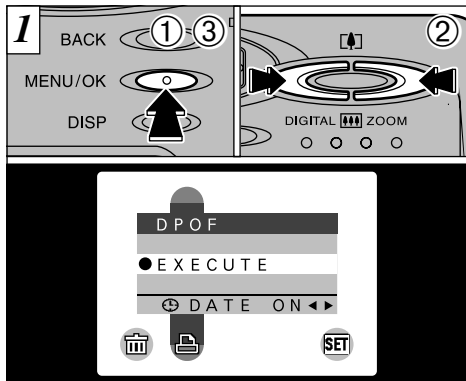
- ① Press the “MENU/OK” button to display the menu on the LCD monitor.
- ② Use “◀” or “▶” to select “DPOF”.

- ! The DPOF menu is not displayed when a movie or voice file is selected.
- ! You may not be able to specify DPOF settings for some still shots taken on other cameras.



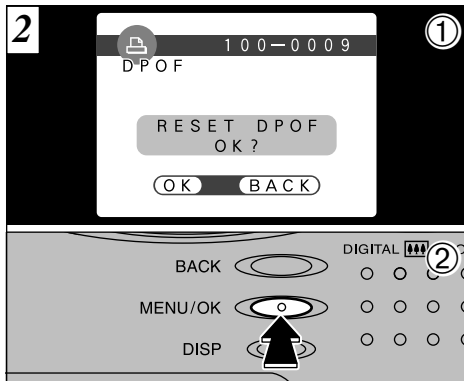
- ① Use “▼ (DATE)” to select “DATE”.
- ② Use “◀” or “▶” to specify “DATE ON” or “DATE OFF”. The selected setting is then valid for all frames with DPOF settings until the camera is switched off. Then specify the DPOF settings (→P.66).

- ! You must specify whether or not the date is included before you specify the DPOF settings.

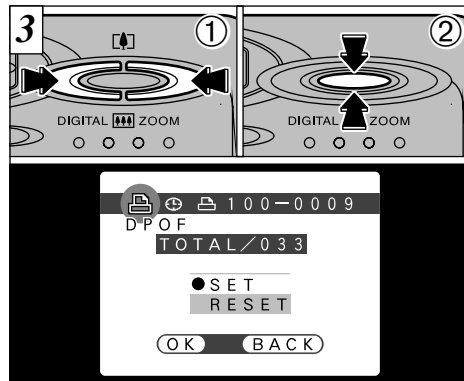


You can only specify one print per frame (image) in the DPOF settings.

- ① Press the "MENU/OK" button to display the menu.
 - ② Use "◀" or "▶" to select "DPOF".
 - ③ With "EXECUTE" selected, press the "MENU/OK" button.
- ⚠ The DPOF menu is not displayed when a movie or voice file is selected.
 - ⚠ You cannot specify printing for more than one print per frame.

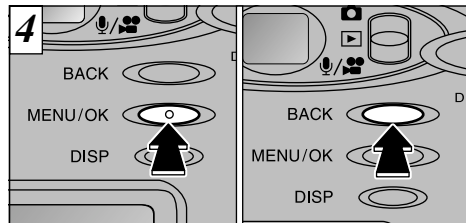


- ① If you select a frame for which DPOF settings have already been specified, the "RESET DPOF OK?" message appears.
 - ② Pressing the "MENU/OK" button erases all the DPOF settings already specified. You must then specify the DPOF settings again.
- ⚠ Press the "BACK" button to leave the previous settings unchanged.
 - ⚠ You can check the previous settings by playing back the images (→P.30).



- ③ Use "◀" or "▶" to display the frame for which you want to specify DPOF settings.
 - ④ Use "▲ (L)" or "▼ (R)" to select the setting for the frame to be printed. You can check the frames for which the date/time has been set from the "⌚" icon that appears when frames with the setting are redisplayed.
- ⚠ DPOF settings cannot be specified for movies.
 - ⚠ Note that the "⌚" icon is not displayed during playback.
 - ⚠ "TOTAL" shows the total number of frames for which prints have been ordered.

To specify more DPOF settings, repeat steps ① and ②.



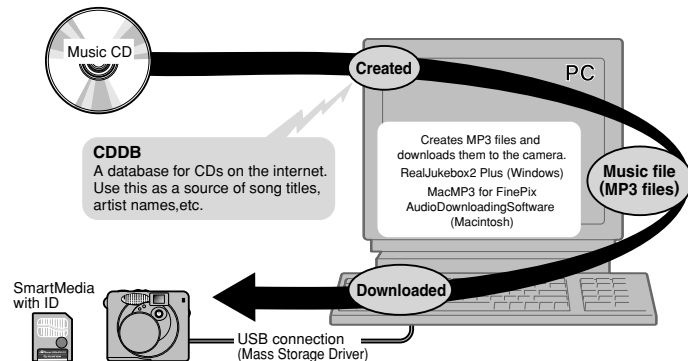
When you have finished specifying the DPOF settings, always press the "MENU/OK" button to confirm the settings. If you press the "BACK" button, no DPOF settings are specified.

- ⚠ You can only specify one print per frame in the DPOF settings. Note also that you can specify prints for up to 999 frames on the same SmartMedia.

Pressing the "MENU/OK" button confirms all the settings. Note that you cannot change the settings later (→P.66).

The Music section describes how to use the remote controller to listen to music and also introduces the other functions that can be used from the remote controller.

■ Schematic diagram



* The MP3 file is encoded and downloaded to your camera. If you copy the music on the SmartMedia to another SmartMedia or computer, you cannot play them back.

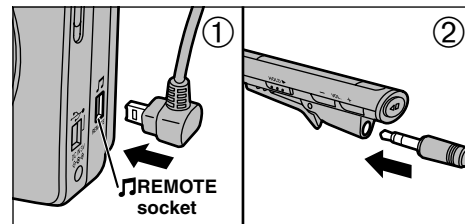
► Notes on playing music

• Do not use while moving.

Never attempt to use the headphones or remote controller or look at the LCD display while you are driving a car or other vehicle as this could cause a traffic accident. If you are using the FinePix30i as a music player while walking, pay close attention to traffic around you and to the pavement surface.

• Do not listen to loud music for long periods and do not turn the volume up high when you first start listening.

Long and continued exposure to loud noises can impair your hearing. Note also that sudden loud noises can damage your ears. Consequently, you should take care to increase the volume gradually.

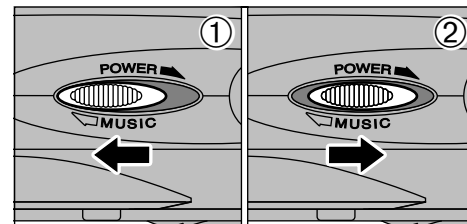


Check that the camera is switched off.

- ① Connect the remote controller unit to the "REMOTE" socket on the camera.
- ② Connect the headphones (provided) to the remote controller.

- ⚠ The remote controller can only be used with this camera.
- ⚠ Third-party headphones (with 3.5 mm dia. mini plug) can be used in place of the headphones provided.

You cannot listen to music through the camera speaker. You must connect the remote controller and headphones.



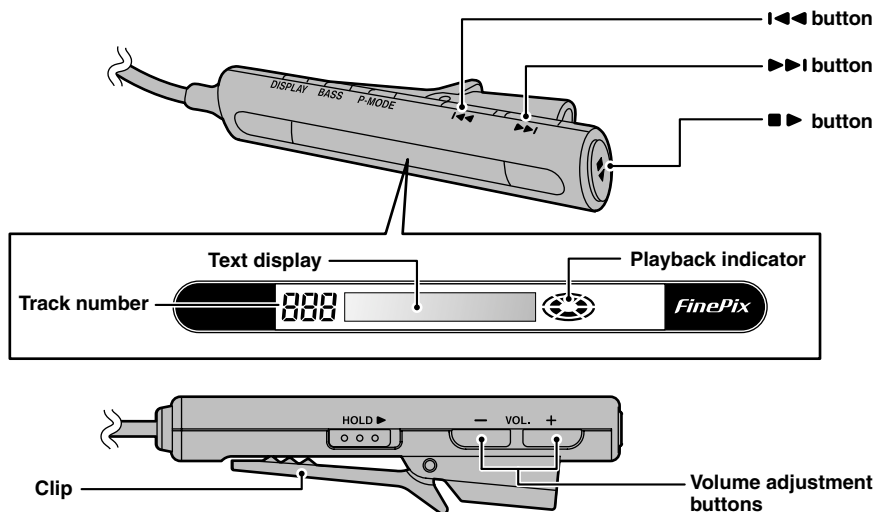
- ① By sliding the Power switch to the "MUSIC" position, you can use the camera as an audio player. The camera switches on when you play back music.
- ② When you do not want to listen to music, slide the Power switch to the middle position.

- ⚠ Once you set the Power switch to "MUSIC", the FinePix30i will not function as a camera.

◆ To listen to music ◆

You must first download music files (MP3 files) to the camera. Refer to the "Software Quick Start Guide (provided)".




USING MUSIC



⚠ When HOLD is set, none of the buttons function. To use the remote controller, release HOLD.

⚠ Due to the nature of the LCD panel on the remote controller, the display may be difficult to see in cold locations or at low temperatures. This is normal and does not indicate a fault.

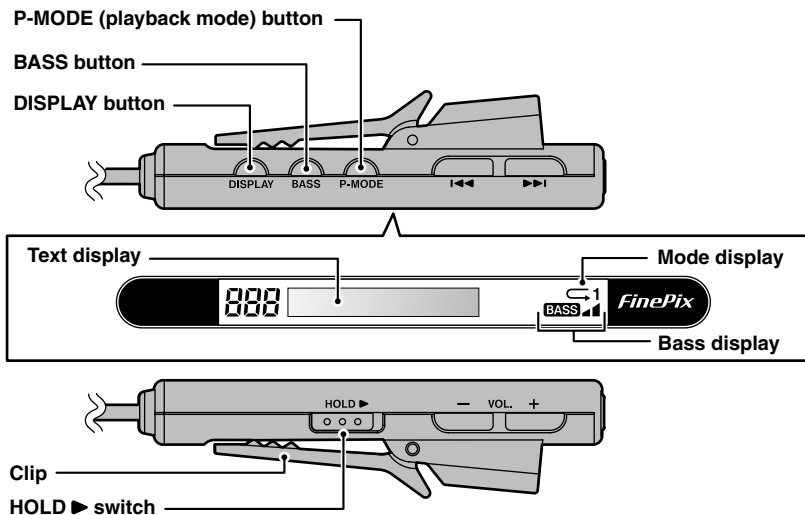
■ Playing Back Music

	Remote controller operation	Explanation
Playback	“■▶”	Plays back music. * If you stop and then restart playback, playback begins from the beginning of the track that was playing when playback was stopped. * The  icon appears on the remote controller.
Pause/Resume	“■▶”	<ul style="list-style-type: none"> Pauses the track when used during playback.  and  are displayed alternately on the remote controller. Resumes playback if used when playback is paused. * If playback is left paused for 2 minutes, the FinePix30i automatically switches itself off.
Stop	Hold down “■▶”	Hold this button down for approximately 1 second to stop playback. * When playback has been stopped for 5 seconds, the FinePix30i automatically switches itself off.
Track advance/rewind	“◀◀” or “▶▶”	<ul style="list-style-type: none"> Skips forward or backward one track each time it is pressed. Hold either button down for approximately 1 second or more while playback is stopped to advance or rewind continuously through the recorded tracks (This is only available for about 5 seconds after playback is stopped). * Pressing “◀◀” once during playback takes you back to the beginning of the current track. Press the button briefly twice in succession to go to the beginning of the previous track.
Volume adjustment	“+” or “-”	<ul style="list-style-type: none"> Adjusts the volume each time it is pressed. Hold the button down for approximately 1 second or longer for continuous volume adjustment. * A status bar is displayed during volume adjustment.

■ Available playback time using batteries (using the batteries provided when fully charged)

Continuous music playback | Approx. 4 hours 30 minutes

USING MUSIC



■ Playing Back Music

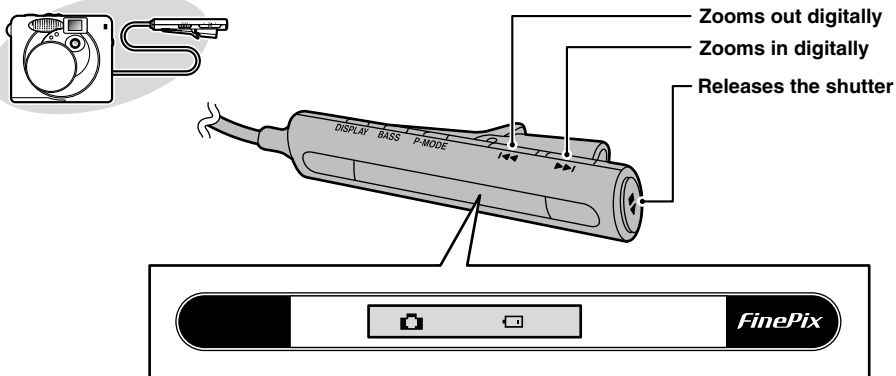
	Remote controller operation	Explanation
Repeat performance	"P-MODE"	Switches in sequence from Normal to Repeat all tracks to Repeat track each time you press the button. <ul style="list-style-type: none"> • Normal (no icon): Plays back all the tracks and then stops. • Repeat all tracks (↺): Repeatedly plays back all the tracks. • Repeat track (↺1): Repeatedly plays back the currently displayed track.
Boost bass	"BASS"	Switches in sequence from Normal to BASS 📶 to BASS 📶📶 each time you press the button. BASS 📶📶📶 boosts low tones most strongly. <ul style="list-style-type: none"> * If the sound is distorted, reduce the bass.
Check title/performer or duration	"DISPLAY"	Switches between title/performer and performance duration each time you press the button. <ul style="list-style-type: none"> * Titles and performer names are scrolled from the right on the display. E.g. xxx by xxx * Characters that cannot be displayed appear as "___".
Prevent unwanted operation	"HOLD ►"	Sliding this button in the direction of the arrow ► disables all the controls to prevent mistaken operation. Slide the button back to its original position to re-enable the controls.

Due to the nature of the LCD panel on the remote controller, the display may be difficult to see in cold locations or at low temperatures. This is normal and does not indicate a fault.

You may hear some static or interference when you are using the remote controller. This is normal and does not indicate a fault.

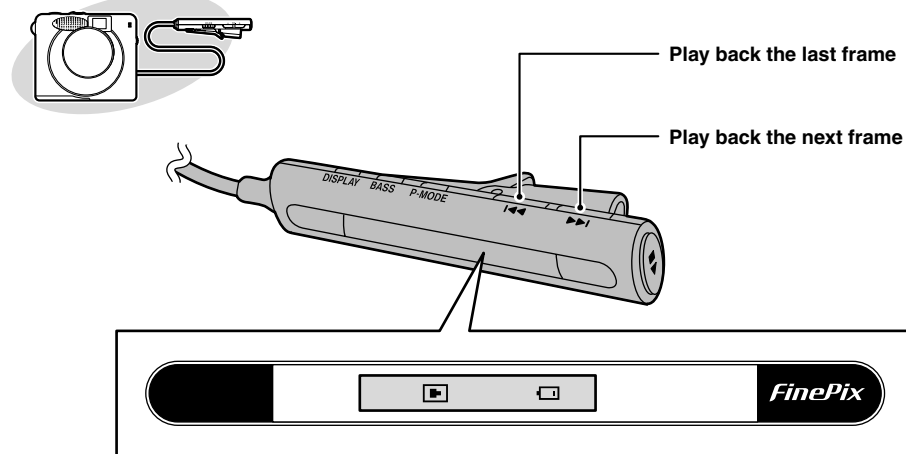
Characters that cannot be displayed (symbols, etc.) appear as "___".

- ① Connect the remote controller supplied with the camera (→P.69).
- ② Set the Mode switch to “📷”.



- ⚠ When you are taking pictures at night or in Macro mode, using the remote controller and a tripod is an effective way to prevent camera shake.
- ⚠ The remote controller cannot be used to shoot movies or record voice captions.
- ⚠ When HOLD is set, none of the buttons function. To use the remote controller, release HOLD.
- ⚠ When the Power Save function is operating, press “◀◀” or “▶▶” to return the camera to the “ready to shoot” status.
- ⚠ Due to the nature of the LCD panel on the remote controller, the display may be difficult to see in cold locations or at low temperatures. This is normal and does not indicate a fault.

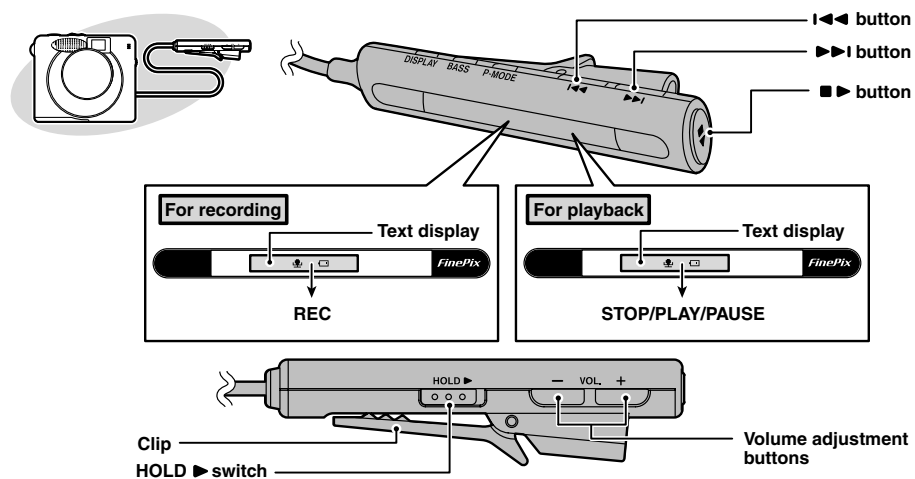
- ① Connect the remote controller supplied with the camera (→P.69).
- ② Set the Mode switch to “▶”.



- ⚠ The remote controller cannot be used to play back movies or voice captions.
- ⚠ When HOLD is set, none of the buttons function. To use the remote controller, release HOLD.

AUDIO RECORDING USING THE REMOTE CONTROLLER

- ① Connect the remote controller supplied with the camera (→P.69).
- ② Set the Mode switch to “🎤/📺” for recording and to “▶” for playback.
- ③ Ensure that the lens cover is closed when you switch the camera on (→P.17, 18).



- ⚠ When HOLD is set, none of the buttons function. To use the remote controller, release HOLD.
- ⚠ Due to the nature of the LCD panel on the remote controller, the display may be difficult to see in cold locations or at low temperatures. This is normal and does not indicate a fault.

■ Recording Audio files

	Remote controller operation	Explanation
Record/Stop	“■▶”	Functions in the same way as Record/Stop using the shutter button.

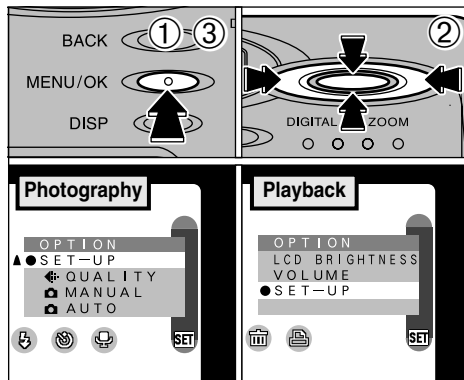
■ Playing Back Audio files

	Remote controller operation	Explanation
Playback	“■▶”	Plays back an audio recording.
Pause/Resume	“■▶”	<ul style="list-style-type: none"> • Pauses the recording when used during playback. • Resumes playback if used when playback is paused.
Stop	Hold down “■▶”	Hold this button down for at least 1 second to stop playback. * Pressing “I◀◀” or “▶▶I” when playback is stopped skips forward (or back) to the next (or previous) file.
Advance/Rewind	Hold down “I◀◀” or “▶▶I” during playback or while playback is paused.	Holding one of these buttons down for approximately 1 second or more during playback or while playback is paused advances or rewinds through the audio file.

The “Settings” chapter looks at functions available from “**SET** OPTION” in the “**📷**” Still Image, “**🎧/🎥**” Audio/Movie and “**▶**” Playback.

■ List of settings

📷 Still Image mode	🎧/🎥 Audio/Movie mode	▶ Playback mode
AAUTO	—	—
AMANUAL	—	—
⚙️ QUALITY (→P.79)	—	—
SET-UP	SET-UP	SET-UP
—	—	VOLUME (→P.80)
LCD BRIGHTNESS (→P.80)	LCD BRIGHTNESS (→P.80)	LCD BRIGHTNESS (→P.80)



- ① Press the “MENU/OK” button to display the menu screen.
- ② Use “◀” or “▶” to select “**SET**OPTION” and “▲ (⬆)” or “▼ (⬆)” to select the desired setting.
- ③ Press the “MENU/OK” button to move to the selected setting.

🔧 See P.81 for more details of the “SET-UP” menu. Download from www.3mmanuals.com. All Manuals Search And Download.

SET ⚙️ SETTING THE FILE SIZE AND QUALITY (COMPRESSION RATIO)

You can choose any combination of 3 file sizes and 3 image quality settings. Use the table below as a guide to the best settings for your shots.

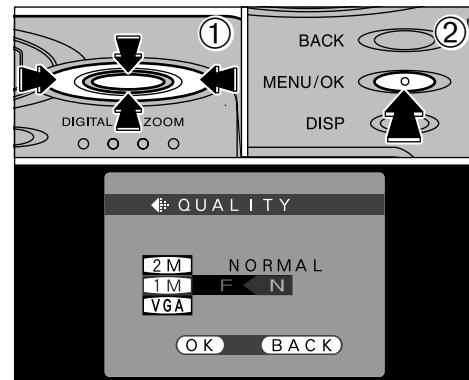
File size	FINE	NORMAL	BASIC
2M (1600 × 1200)	①	①	②
1M (1280 × 960)	②	②	—
VGA (640 × 480)	—	③	—

- ①: For printing the whole image at A5 size (6 × 8 in.) or printing a part of the image at A6 size (4 × 6 in.)
- ②: For printing at A6 size (4 × 6 in.)
- ③: For use via the Internet as an e-mail attachment, etc.

Quality (compression ratio)

Select “FINE” for better image quality and “BASIC” to increase the number of available shots. In most cases, the “NORMAL” setting provides more than adequate image quality.

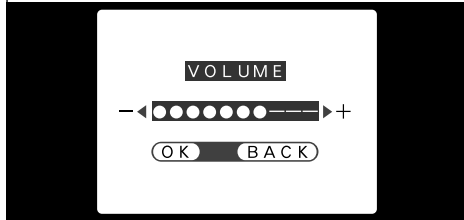
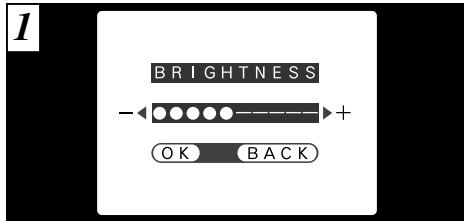
🔧 The number of available shots varies depending on the combination of file size and quality settings you select (→P.26)



- ① Use “▲ (⬆)” or “▼ (⬆)” to change the file size setting and “◀” or “▶” to change the quality setting.
- ② Press the “MENU/OK” button to confirm the setting.

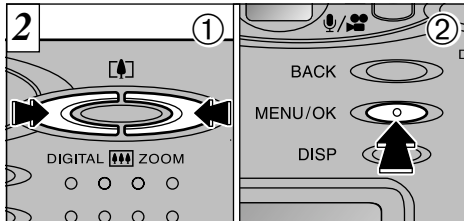
🔧 To exit this procedure without changing the settings, press the “BACK” button.

SET LCD MONITOR BRIGHTNESS/VOLUME



When you use the "LCD BRIGHTNESS" or "VOLUME" settings, an "adjustment bar" appears on the LCD monitor.

80 The volume can be set when the Mode switch is set to "▶".



- ① Use "◀" or "▶" to adjust the LCD monitor brightness or speaker volume.
- ② Press the "MENU/OK" button to confirm the adjustment.

To exit this procedure without changing the settings, press the "BACK" button.

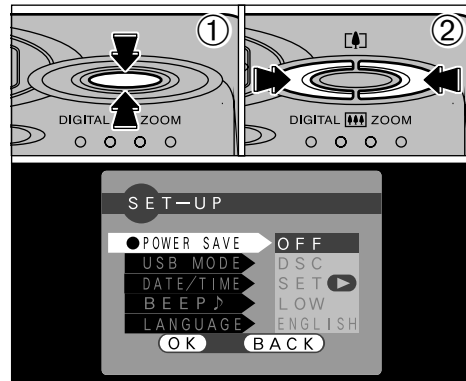
The volume setting can be used to adjust the camera speaker volume. The headphone volume is adjusted from the remote controller (during music playback and audio recording playback).

SET-UP SET-UP

SET-UP menu options

Settings	Display	Factory default	Explanation
POWER SAVE	ON/ OFF	OFF	This is a function that reduces power consumption and then automatically switches the camera off to prevent battery depletion when the camera is not being used. See P.82 for details.
USB MODE	DSC/ PC CAM	DSC	See P.83 for details.
DATE/TIME	SET ▶	—	You can use this to set the date and time. See P.20 for details.
BEEP 🎵	LOW/ HIGH/ OFF	LOW	This setting selects the volume of the beep emitted by the camera during camera operation.
LANGUAGE	ENGLISH/ FRANCAIS	ENGLISH	Select English or French as the language used for screen display.

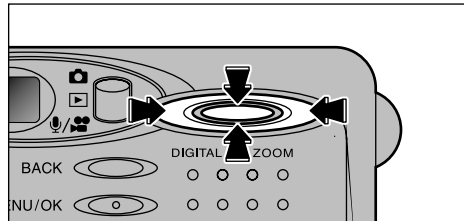
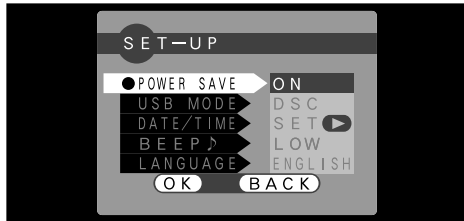
Using SET-UP



If you selected "SET-UP", the "SET-UP" screen appears.

- ① Use "▲ (▶)" or "▼ (⏏)" to select the desired setting.
- ② Use "◀" or "▶" to change the setting. Press the "MENU/OK" button to exit set-up.

For "DATE/TIME" press "▶".



When the Power Save function is operating, press “▲ (L)”, “▼ (M)”, “◀”, “▶” to return the camera to the “ready to shoot” status. This is a useful feature as it allows you to take pictures more quickly than switching the camera off and then on again.

⚠ Operation can also be restored by pressing buttons other than “▲ (L)”, “▼ (M)”, “◀”, “▶”.

◆ **Auto Power Off function** ◆

If the camera is not used in any way for roughly 2 minutes, the Auto Power Off function always switches the camera off to reduce power consumption. You cannot disable this function. However, the Auto Power Off function does not operate in sound sync. mode, during recording or playback of audio recordings, or when the camera is connected via the USB interface.

Once you set the POWER SAVE function to ON, the monitor is temporarily switched off to reduce power consumption if the camera is not used for about 30 seconds. Use this function to get the maximum possible running time from the batteries. However, note that even when enabled, the POWER SAVE function does not operate in the following conditions:

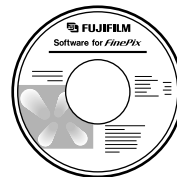
When you use the viewfinder to take pictures (with the LCD monitor switched off) or to take pictures in SOUND SYNC. mode; or Playback mode, when you are recording or playing back audio recordings; or when you are setting the file size or monitor brightness, during set-up; or when the camera is connected via the USB interface.

⚠ Once you set the POWER SAVE function to ON, the charging time for the flash increases slightly because the flash charging power is reduced.

PC Connection describes how to set up a USB connection and provides an overview of the functions available using a USB connection. Refer also to the **Software Quick Start Guide booklet**.

The first time you connect the camera to your computer

You must install all the software before connecting the camera to your computer. Refer to the Software Quick Start Guide booklet also.



CD-ROM
(Software for FinePix MP)



Software Quick Start Guide

DSC (Mass storage device) Mode

This mode provides a simple way to read images from a SmartMedia and store images on to a SmartMedia (⇒P.84). Use this mode to download music files.

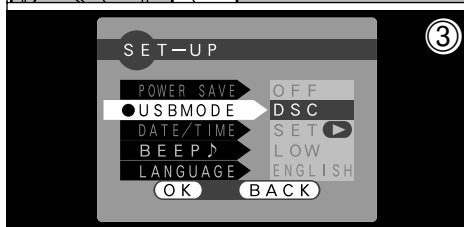
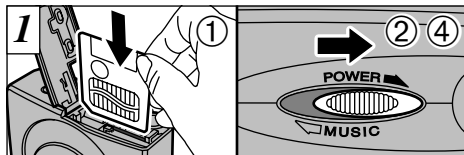
PC-CAM (camera) Mode

This function allows you to conduct videoconferencing sessions between PCs connected to the Internet. This function can also be used to record video on a PC (⇒P.86).

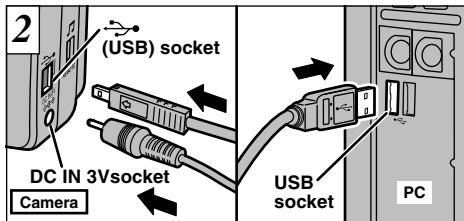
⚠ **Videoconferencing (“PictureHello”) is not supported on Macintosh computers.**

⚠ The PC Camera function cannot be used on Mac OS X (including the Classic environment). Use a Mac OS version between 8.6 and 9.2.

CONNECTING AT DSC MODE



- ① Load a SmartMedia containing photographed images into your camera.
 - ② Slide the Power switch to the right to switch the camera on.
 - ③ Set the "USB MODE" setting in the "SET-UP" menu to "DSC" (⇒P.78, 81).
 - ④ Slide the Power switch to the right again to switch the camera off.
- ⚠ You should use the AC power adapter when the camera is connected to your PC (⇒P.22, 91). Loss of power during data transmission can prevent successful data downloading.



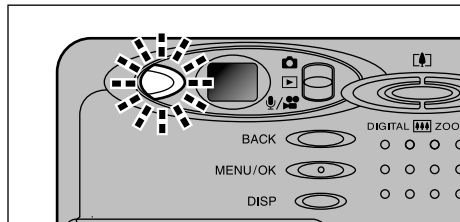
- ① Switch your PC on.
- ② Use the special USB cable to connect the camera to your PC.
- ③ Switch the camera on.

If you are using a Windows PC, the driver settings are specified automatically when installation is completed. No further action is required.
 * If your PC fails to recognize the camera, refer to the Software Quick Start Guide.

Always use the prescribed procedure when disconnecting or switching off the camera (⇒P.88).

- ⚠ On Windows XP and Mac OS X, you must specify the automatic launch settings the first time you connect the camera to your computer (⇒Software Quick Start Guide booklet).
- ⚠ Take care to connect the plugs on the special USB cable into the correct sockets, and ensure that the plugs are inserted firmly.

Camera Operation



- The viewfinder lamp alternately blinks green and orange while the camera is communicating with your PC.
- "DSC" appears on the screen.
- The camera does not automatically switch off when a USB connection is being used.

- ⚠ Switch the camera off when you change the SmartMedia (⇒P.88).
- ⚠ Do not disconnect the USB cable when the camera is communicating with the PC. See P.88 for information on the disconnection procedure.

PC Operation

- FinePixViewer automatically starts up.



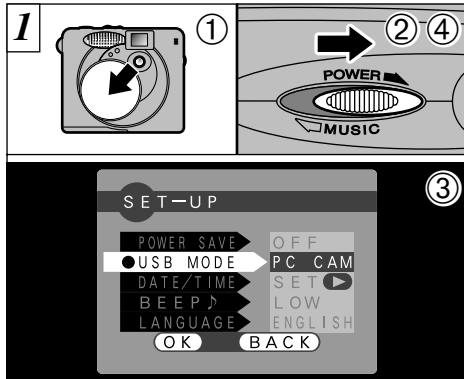
* Screen for Windows 98SE

- A removable disk icon appears and you can use your PC to transfer files to and from the camera.

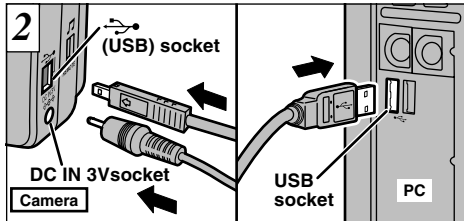


If the above operations do not occur, you do not have the required software programs or drivers installed on your PC. Refer to the Software Quick Start Guide booklet and complete the required PC setup procedures. Then reconnect the camera to your PC.

CONNECTING AT PC-CAMERA MODE



- ① Open the lens cover.
 - ② Slide the Power switch to the right to switch the camera on.
 - ③ Set the "USB MODE" setting in the "SET-UP" menu to "PC CAM" (→P.78, 81).
 - ④ Slide the Power switch to the right again to switch the camera off.
- ⚠ You should use the AC power adapter when the camera is connected to your PC (→P.22, 91). Loss of power during data transmission can prevent successful data downloading.



- ① Switch your PC on.
- ② Use the special USB cable to connect the camera to your PC.
- ③ Switch the camera on.

If you are using a Windows PC, proceed as follows when installation is completed.

Windows 98/98SE/Me/2000:

The driver settings are specified automatically. No further action is required.

Windows XP:

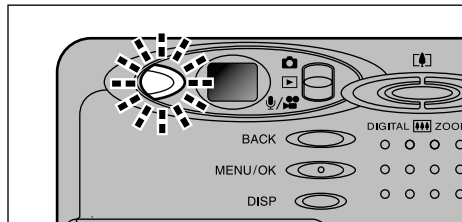
When the confirmation dialog box appears, click the "Continue" button.

* If your PC fails to recognize the camera, refer to the Software Quick Start Guide.

Always use the prescribed procedure when disconnecting or switching off the camera (→P.88).

- ⚠ Take care to connect the plugs on the special USB cable into the correct sockets, and ensure that the plugs are inserted firmly.

Camera Operation



- The viewfinder lamp alternately blinks green and orange while the camera is communicating with your PC.
- "PC CAM" appears on the screen.
- The camera does not automatically switch off when a USB connection is being used.

- ⚠ Do not disconnect the USB cable when the camera is communicating with the PC. See P.88 for information on the disconnection procedure.

PC Operation

- FinePixViewer automatically starts up and the PictureHello window opens (Windows only).



* Screen for Windows 98SE

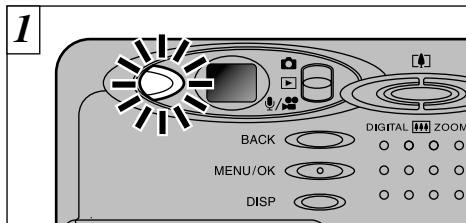
- You can use software such as VideoImpression to view live images.



* Screen for Macintosh

If the above operations do not occur, you do not have the required software programs or drivers installed on your PC. Refer to the Software Quick Start Guide booklet and complete the required PC setup procedures. Then reconnect the camera to your PC.

DISCONNECTING FROM THE PC (Important — always use this procedure.)



- 1 Quit all applications (FinePixViewer, VideoImpression, etc.) that are using the camera.
- 2 Check that the viewfinder lamp is glowing green (that the camera is not communicating with the computer).

For a DSC connection, proceed to step 2.
For a PC CAMERA connection, proceed to step 3.

- Even after the “Copying...” message is no longer displayed on your PC, communication with the camera may still be in progress. Always check that the viewfinder lamp on the camera is glowing green and is no longer flashing.

- 2 Perform the steps shown below before you switch the camera off. This procedure differs depending on the operating system software (or PC) you are using.

Windows 98 or 98 SE

No PC operation is needed.

Windows Me/2000 Professional/XP

- 1 Right-click the removable disk icon in the “My Computer” window and select Eject.



* This step is only required in Windows Me.

- 2 Left-click the Eject icon in the taskbar and eject “USB Disk”.



* Screen for Windows Me

- 3 The menu item shown below appears. Click the mouse again.



* Screen for Windows Me

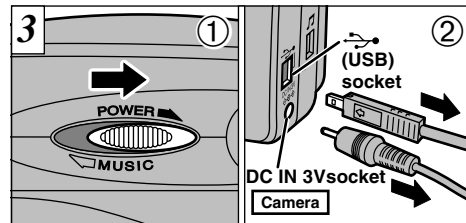
- 4 The “Eject hardware” dialog box appears. Click the [OK] button or the close button.

Macintosh

Drag the “Removable drive” icon on the desktop to the Trash.



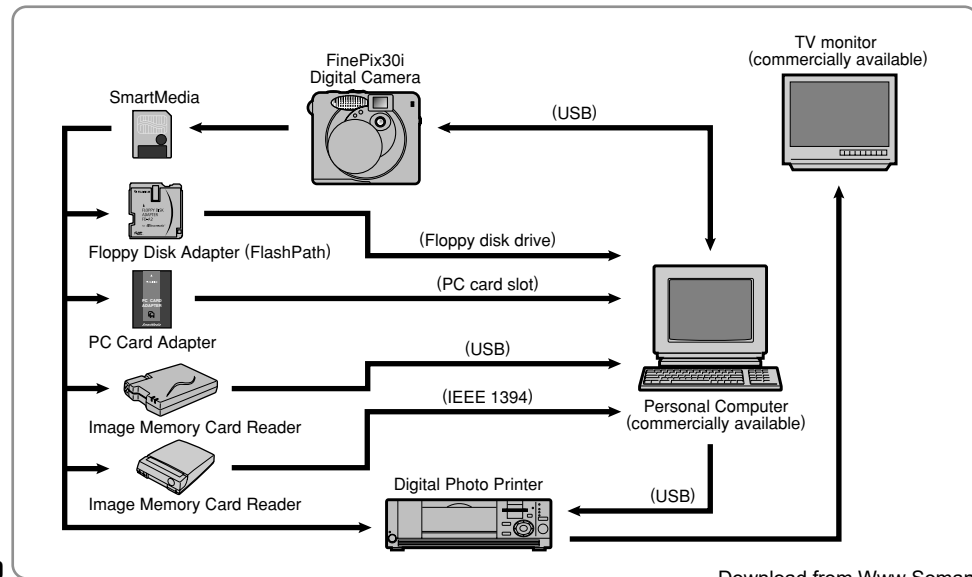
- When you drag the icon to the Trash, “REMOVE OK” appears on the camera’s LCD monitor.



- 1 Switch the camera off.
- 2 Unplug the special USB cable from the camera.

System Expansion Options

- By using the FinePix30i together with other optional FUJIFILM products, your system can be expanded to fill a wide range of uses.



Accessories Guide

- The optional accessories (sold separately) can make taking pictures with the FinePix30i even easier. For information on how to attach and use the accessories, refer to the instructions provided with the accessory used.

● SmartMedia™

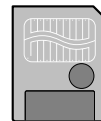
These are SmartMedia cards sold separately. Use the 9 types listed below.

- MG-4S: 4MB, 3.3V
- MG-8S: 8MB, 3.3V
- MG-16S: 16MB, 3.3V
- MG-32S: 32MB, 3.3V
- MG-64S: 64MB, 3.3V

* Some 3.3V SmartMedia are labelled as "3V" cards.

- MG-16SW: 16MB, 3.3V, ID
- MG-32SW: 32MB, 3.3V, ID
- MG-64SW: 64MB, 3.3V, ID
- MG-128SW: 128MB, 3.3V, ID

* SmartMedia with ID are labelled as "ID" cards.



● AC Power Adapter AC-3V

Use the AC power adapter when you want to take pictures or play back images for long periods or when the camera is connected to a computer.

* The shape of the AC power adapter, the plug and socket outlet depend on the country.



● Fujifilm Rechargeable Battery 2HR-3UF

The 2HR-3UF includes 2 high-capacity AA-size Nickel Metal Hydride batteries.

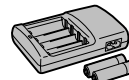


● Fujifilm Battery Charger with Battery BK-NH (with Euro type or UK type plug)

The BK-NH includes the quick battery charger BCH-NH and 2 Ni-MH batteries.

The BCH-NH can charge 2 Ni-MH batteries in approximately 120 minutes.

Up to 4 Ni-MH batteries can be charged simultaneously.



● SC-FX30 Soft Case

This is a special case made of polyurethane that protects the camera against soiling, dust and minor impacts when it is being carried.

● **FD-A2 Floppy Disk Adapter (FlashPath)**

Cannot be used to store music files.

This adapter is the same size and shape as a 3.5-inch floppy disk. You can copy the images on a SmartMedia to your PC simply by loading the SmartMedia into the floppy disk adapter and then inserting the adapter into your floppy disk drive.



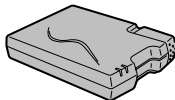
	Compatible OS	Compatible SmartMedia
FD-A2	Windows 95/98/98SE/Me/NT4.0 Mac OS 7.6.1 to 9.1	5V/3.3V, 2MB to 128MB

● **SM-R2 Image Memory Card Reader**

Cannot be used to store music files.

The SM-R2 provides a quick and easy way to transfer images back and forth between your PC and an image memory card (SmartMedia). The SM-R2 uses the USB interface for high-speed file transfer.

- Compatible with Windows 98/98SE, Windows Me, Windows 2000 Professional or iMac and models that support USB as standard.



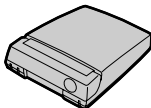
● **DM-R1 Image Memory Card Reader**

Cannot be used to store music files.

This device provides a simple way to transfer image data in either direction between your PC and an image memory card (SmartMedia or CompactFlash Type II (Microdrive-compatible)).

The IEEE 1394 interface provides high-speed data transfer.

- Compatible with Windows 98SE, Windows 2000 Professional (read-only), iMacDV and Power Macintosh PCs with FireWire as a standard feature. Mac OS 8.5.1 to 9.1



● **PC-AD3 PC Card Adapter**

Cannot be used to store music files.

The PC Card Adapter allows the SmartMedia to be used as a PC Card Standard ATA-compliant (PCMCIA 2.1) PC card (Type II).

- Compatible with SmartMedia of 5V/3.3V, 2MB to 128MB.



Notes on Using Your Camera Correctly

► Be sure to read this information in conjunction with “Safety Notes” (→P.110), to ensure that you use your camera correctly.

■ **Places to Avoid**

Do not store or use the camera in the following types of locations:

- In the rain or in very humid, dirty or dusty places.
- In direct sunlight or in places subject to extreme temperature rises, such as in a closed car in summer.
- Extremely cold places.
- Places subject to strong vibration.
- Places affected by smoke or steam.
- Places subject to strong magnetic fields (such as near motors, transformers or magnets).
- In contact with chemicals such as pesticides or next to rubber or vinyl products for long periods of time.

■ **Notes on Immersion in Water or Sand**

The FinePix30i is particularly adversely affected by water and sand. When you are at the beach or close to water, ensure that the camera is not exposed to water or sand. Take care also not to place the camera on a wet surface. Water or sand inside the camera can cause faults that may be irreparable.

■ **Notes on Condensation**

If the camera is carried suddenly from a cold location into a warm place, water droplets (condensation) may form on the inside of the camera or on the lens. When this occurs, switch the camera off and wait an hour before using the camera. Condensation may also form on the SmartMedia

card. In this event, remove the SmartMedia and wait a short time before using it again.

■ **When the Camera is Unused for Long Periods**

If you do not intend to use the camera for a long period of time, remove the batteries and the SmartMedia card before storing the camera.

■ **Cleaning Your Camera**

- Use a blower brush to remove dust from the lens, LCD monitor screen or viewfinder as these surfaces, and then wipe lightly with a soft, dry cloth. If any soiling remains, apply a small amount of lens cleaning liquid to a piece of FUJIFILM lens cleaning paper and wipe gently.
- Do not scratch hard objects against the lens, LCD monitor screen or viewfinder as these surfaces are easily damaged.
- Clean the body of the camera with a soft, dry cloth. Do not use volatile substances such as thinners, benzine or insecticide, as these may react with camera body and cause deformation or remove the coating.

■ **Using the Camera Overseas**

When travelling overseas, do not place your camera in the check-in baggage. Baggage handling at airports may subject baggage to violent shocks, and the camera may be damaged internally even when no external damage is visible.

Notes on the Power Supply

Applicable Batteries

- Use AA-size nickel-metal hydride (Ni-MH) batteries in this camera.
AA-size lithium or manganese batteries cannot be used as they emit heat and can cause camera faults or damage.
- Only use AA-size alkaline batteries for emergencies. The capacities of alkaline batteries vary depending on the brand and the life of some batteries (the time for which they provide power) may be much shorter than others. You should also switch the LCD monitor off when using alkaline batteries.

Notes on the Batteries

Incorrect use of the batteries could cause them to leak, become hot, ignite or burst. Always observe the precautions given below.

- Do not heat the batteries or throw them into a fire.
- Do not carry or store batteries with metal objects such as necklaces or hairpins that could come into contact with the metal positive ⊕ and negative ⊖ poles of the batteries.
- Do not expose the batteries to fresh or sea water, and take particular care to keep the terminals dry.
- Do not attempt to deform, disassemble or modify the batteries.
- Do not attempt to peel off or cut the batteries casing.
- Do not drop, strike or otherwise subject the batteries to strong impacts.
- Do not use batteries that are leaking, deformed,

discolored or exhibit any other obvious abnormality.

- Do not store batteries in very warm or moist locations.
- Keep the batteries out of the reach of babies and small children.
- When loading the batteries in the camera, ensure that the battery polarity (⊕ and ⊖) is as indicated on the camera.
- Do not use a new battery together with an used battery.
- In the case of rechargeable batteries, do not use charged and discharged batteries together. Do not use batteries of different types or brands together.
- If you do not intend to use the camera for a long period of time, remove the batteries from the camera. (Note that if the camera is left with the batteries removed, the time and date settings are cleared.)
- The batteries may feel warm immediately after being used. Before removing the batteries, switch the camera off and wait until the batteries cool down.
- When replacing the batteries, always fit 2 new batteries. Here, "new batteries" refers to batteries that were recently fully charged at the same time.
- Battery performance deteriorates at low temperatures (+10°C/+50°F or below) and the time for which they can be used shortens. This is particularly true of alkaline batteries. In cold conditions, put the batteries in your pocket or a similar place to warm them before loading them into the camera. If you use a body warmer to warm the batteries, ensure that they are not in direct contact with the warmer.
- Soil, such as fingerprints, on the battery terminals can significantly reduce the number of available shots. Carefully wipe the battery terminals clean with a soft, dry cloth before loading the batteries.

- ⚠ If any liquid at all leaks from the batteries, wipe the battery compartment thoroughly and then load new batteries.
- ⚠ If any battery fluid comes into contact with your hands or clothing, flush the area thoroughly with water. Note that battery fluid can cause loss of eyesight if it gets in your eyes. If this occurs, do not rub your eyes. Flush the fluid out with clean water and contact your physician for treatment.

Disposing of Batteries

When disposing of batteries, do so in accordance with your local waste disposal regulations.

Notes on using compact rechargeable batteries (Ni-MH batteries)

- To charge AA-size Ni-MH batteries, follow the correct charging procedure using the special charger provided or the optional fast charger.
- Do not use the battery charger to charge batteries other than those specified for use with the charger.
- Note that the batteries may feel warm immediately after being charged.
- Ni-MH batteries are not charged at shipment.
- The camera mechanism is such that it draws a minute amount of current even when the camera is switched off. Note particularly that Ni-MH batteries will become over-discharged if left in the camera for a long period and will no longer be usable even if recharged.
- Ni-MH batteries self-discharge even when they are not being used. Always charge Ni-MH and Ni-Cd batteries before using them. If the time for which a battery provides power shortens markedly when it has been correctly

charged, this indicates that the battery has reached the end of its effective life and should be replaced.

- Soil (fingerprints, etc) on the terminals of Ni-MH batteries can greatly reduce the number of available shots. When this occurs, clean the terminals carefully with a soft dry cloth. Then use up the remaining charge in the batteries and recharge them.
- Newly purchased batteries or batteries that have been left unused for an extended period may not be fully charged. (This is indicated by the immediate display of the battery low warning and a low available shots/time for battery operation.) This is a normal characteristic of the batteries and does not indicate a fault. Repeatedly charging and using the batteries 3 or 4 times will enable you to fully recharge the batteries and increase the time for which the camera will operate using batteries.
- If you repeatedly charge a Ni-MH batteries before it is fully discharged, it will suffer from the "memory effect"*, causing the "battery low" warning to appear while there is still ample charge remaining in the battery. To restore the batteries to their normal condition, use up all the charge in the batteries before recharging them.
- * Memory effect: A phenomenon whereby a battery displays the characteristic of appearing to have a reduced capacity.

Notes on Using the Enclosed Battery Charger

- Rechargeable batteries and the battery charger itself will become warm due to the power stored inside the batteries. This is normal and does not indicate a fault.

Notes on the Power Supply

Wherever possible, use the battery charger in a well-ventilated location.

- There may be vibration noises from inside the battery charger during use. This is normal and does not indicate a fault.
- Do not use the battery charger to charge batteries other than FUJIFILM HR-3UF Ni-MH batteries.
- The battery charger could cause interference if placed close to a radio during charging. In this event, move the radio and charger further apart.
- Do not touch the connections or contact points on rechargeable batteries with other metal objects as this can cause a short circuit.
- Do not leave the battery charger in the following locations: Locations subject to strong vibrations, in very dusty locations, or in locations with very high humidity or high temperatures, such as close to a heating appliance or in direct sunlight.
- The battery charger accepts input voltages of 100-240 V AC at 50 or 60 Hz and can be used outside Japan. However, because the shapes of power sockets vary by country and by region, an appropriate plug adapter is also required for each country. Consult your travel agent for details.

Specifications of the Enclosed Battery Charger BC-NHS

Rated input	100-240 V AC, 50/60 Hz
Input capacity	0.04 A-0.07 A
Rated output	1.2 V DC, 400 mA × 2

Applicable batteries	FUJIFILM HR-3UF (Ni-MH: 1500 mAh, 1600 mAh or 1700 mAh)
Charging time	HR-3UF (1500 mAh): Approx. 3.8 hours HR-3UF (1600 mAh): Approx. 4.5 hours HR-3UF (1700 mAh): Approx. 5 hours
Dimensions	68 mm × 90 mm × 26.5 mm (2.7 in. × 3.55 in. × 1.05 in.) (W × H × D)
Mass (Weight)	Approx. 85 g (3.0 oz.) (excluding batteries)
Operating temperatures	0°C to + 40°C (+ 32°F to + 104°F)

Notes on Using the AC Power Adapter

Always use the AC-3V AC Power Adapter (sold separately) with the FinePix30i.

The use of an AC power adapter other than the AC-3V could result in damage to your camera.

- Ensure that you do not touch the contact areas on the AC power adapter against any other metal object as this could cause a short circuit.
- Do not plug in the AC power adapter while you are operating the camera using batteries. Switch the camera off first.
- Do not load the batteries while you are operating the camera using the AC power adapter. Switch the camera off first.
- If you disconnect the AC power adapter when there are no batteries in the camera, the date and time settings will be lost and must be reset.

Notes on the SmartMedia™

SmartMedia

The SmartMedia card supplied with your FinePix30i camera is a new image recording medium developed especially for use in digital cameras. Each SmartMedia card contains a built-in semiconductor memory chip (NAND flash memory) which is used for storing digital image data.

Because the data is stored electronically, the stored image data can be erased from the card and new data recorded.

SmartMedia with IDs

The SmartMedia ID is a SmartMedia that has an individually assigned identification number. SmartMedia ID cards can be used with devices that use ID numbers for copyright protection or other purposes. This camera accepts SmartMedia ID cards in the same way as conventional SmartMedia cards.

Storing Data

In the situations listed below, recorded data may be erased (destroyed). Please note that Fuji Photo Film Co., Ltd. accepts no responsibility whatsoever for the loss (destruction) of recorded data.

- *When the SmartMedia is used incorrectly by the owner or a third party
- *When the SmartMedia is exposed to static electricity or electrical noise
- *When the battery cover is opened or the SmartMedia removed and the camera is then switched off during data recording, during data erasing (SmartMedia formatting) or during frame advance when images are being played back.

**Back up important data onto another medium.
(MO disk, floppy disk, hard disk, etc.)**

Notes on Handling SmartMedia

- Take care to hold the SmartMedia straight when you load it into your camera.
- Never remove the SmartMedia or switch the camera off during data recording, during data erasing (SmartMedia formatting) or during frame advance when images are being played back. These actions could result in damage to the SmartMedia.
- Use only the SmartMedia specified for use with the FinePix30i. The use of other SmartMedia could damage the camera.
- SmartMedia are precision electronic devices. Do not bend, drop, or subject SmartMedia to excessive shocks.
- Do not use or store SmartMedia in environments likely to be affected by strong static electricity or electrical noise.
- Do not use or store SmartMedia in very hot, humid or corrosive environments.
- Take care not to touch the SmartMedia's contact area or allow the area to become soiled. Use a dry lint-free cloth to wipe away any soiling that does occur.
- To avoid damage caused by static electricity, always use the special static-free case provided during transportation or storage, or keep the SmartMedia in a storage case if available.

- Do not carry SmartMedia in locations such as a trouser pocket. This could subject the SmartMedia to excessive force when you sit down, thereby damaging the SmartMedia.
- The SmartMedia may feel warm when it is removed from the camera after extended periods of picture taking or image viewing. This is normal and does not indicate a fault.
- Inserting a SmartMedia that is charged with static electricity into your camera may result in a camera malfunction. If this occurs, switch the camera off and then on again.
- Affix the label onto the designated area of the card. Do not use third-party labels as this can lead to problems when the card is inserted or removed.
- When you attach the label, take care that it does not cover any of the write-protect area.

■ Notes on Using SmartMedia with a PC

- If you intend to take photos using a SmartMedia that has been used on a PC, format the SmartMedia on your camera.
- When you format a SmartMedia in the camera and then shoot and record images, a directory (folder) is automatically created. Image data is then recorded in this directory.
- Do not change or delete the directory (folder) names or file names on the SmartMedia from your PC as this will make it impossible to use the SmartMedia in your camera.

- Always use the camera to erase image data on a SmartMedia.
- To edit image data, copy the image data to the PC's hard disk and then edit the copied data.

Be sure to use your PC's disk eject function (right-click the removable disk icon in the "My Computer" window and then click "Eject") when you eject a SmartMedia from the PC card reader or PC card adapter. When you are using a USB connection, you should also select and left-click the eject button for "USB disc/mass storage" in the taskbar. If you do not use the correct eject procedure, the SmartMedia may be damaged due to write-behind caching.

■ Specifications

Type	Image memory card for digital cameras (SmartMedia)
Operating voltage	3.3V
Conditions for use	Temperature: 0°C to +40°C (+32°F to +104°F) Humidity: 80% or less (no condensation)
Dimensions	37 mm × 45 mm × 0.76 mm (1.45 in. × 1.77 in. × 0.03 in.) (W × H × D)


Warning Displays

► In Music mode, nothing is displayed on the LCD monitor.

Warning Displayed		Explanation	Remedy
LCD Monitor	Remote Controller		
 		The batteries in the camera are fully depleted or very low on charge.	Replace the batteries or have new batteries ready.
		There is no SmartMedia loaded or a 5 V SmartMedia is loaded the wrong way round.	Load the SmartMedia (3.3V) in the correct direction.
		<ul style="list-style-type: none"> The SmartMedia is not formatted. The SmartMedia contact area is soiled. Camera fault. 	<ul style="list-style-type: none"> Wipe the contact area on the SmartMedia with a soft dry cloth. It may be necessary to format the SmartMedia. If the error message is still displayed, replace the SmartMedia. Contact your FUJIFILM dealer.
		<ul style="list-style-type: none"> The SmartMedia contact area is soiled. The SmartMedia is damaged. The SmartMedia format is incorrect. Camera fault. 	<ul style="list-style-type: none"> Wipe the contact area on the SmartMedia with a soft dry cloth. It may be necessary to format the SmartMedia. If the error message is still displayed, replace the SmartMedia. Contact your FUJIFILM dealer.
		The SmartMedia is fully recorded.	Erase some images or use a SmartMedia that has ample free space.
		The SmartMedia is write-protected.	Use a SmartMedia that is not write-protected.

Warning Displays

Warning Displayed		Explanation	Remedy
LCD Monitor	Remote Controller		
! READ ERROR	! ERROR	<ul style="list-style-type: none"> An attempt was made to playback a frame not recorded on this camera. The SmartMedia contact area is soiled. Camera fault. You attempted to play a movie with a recording time longer than 20 seconds. You attempted to play back a voice file recorded on a FinePix50i. 	<ul style="list-style-type: none"> Images cannot be played back. Wipe the contact surface on the SmartMedia thoroughly with a soft, dry cloth. In some cases, you may have to format the SmartMedia. Contact your FUJIFILM dealer. You cannot play back movies that are more than 20 seconds long. Images cannot be played back.
! FILE NO. FULL	! FULL	The frame number has reached 999-9999.	Take the shot using a formatted SmartMedia.
! WRITE ERROR	! ERROR	<ul style="list-style-type: none"> The data could not be recorded due to a SmartMedia error or a connection error between the SmartMedia and camera. The photographed image cannot be recorded as it is too large to fit in the available space on the SmartMedia. 	<ul style="list-style-type: none"> Re-insert the SmartMedia or switch the camera off and then on again. Use a new SmartMedia.
! ERROR	! ERROR	<ul style="list-style-type: none"> The voice caption file is faulty. Camera fault. 	<ul style="list-style-type: none"> The voice caption cannot be played back. Contact your FUJIFILM dealer.

Warning Displayed		Explanation	Remedy
LCD Monitor	Remote Controller		
	—	There is a strong likelihood of camera shake because the shutter speed is slow.	Use flash photography. However, a tripod should be used for some scenes and modes.
! PROTECTED FRAME	—	A protected frame was erased.	Protected files cannot be erased. Unprotect the frame using the camera on which the protection was first applied.
! DPOF	—	DPOF settings are specified for an image you tried to erase.	To erase the image, specify "RESET" as the DPOF setting (➡P.66).
! DPOF FILE ERROR	! ERROR	Prints were specified for more than 1000 frames in the DPOF frame settings.	The maximum number of frames for which prints can be specified on the same SmartMedia is 999.
! LENS COVER	! ERROR	<ul style="list-style-type: none"> The lens cover is closed. The lens cover is faulty. 	<ul style="list-style-type: none"> Open and close the lens cover again. Switch the camera off and on again.
—	—	There is no music file.	Music playback is not possible. Download some music file.
—	! ID	This music file was downloaded to a different SmartMedia.	Insert a new SmartMedia into the camera and download the music file again.

Problem	Cause	Remedy
No power.	<ul style="list-style-type: none"> The batteries are exhausted. The AC power adapter plug has come out of the power outlet. 	<ul style="list-style-type: none"> Load fully charged batteries. Plug the adapter back in.
Power cuts out during operation.	<ul style="list-style-type: none"> The batteries are exhausted. 	<ul style="list-style-type: none"> Load fully charged batteries.
Batteries run out quickly.	<ul style="list-style-type: none"> You are using the camera in extremely cold conditions. The terminals are soiled. The batteries have reached the end of its operating life. 	<ul style="list-style-type: none"> Put the batteries in your pocket or another warm place to heat it and then load it into the camera just before you take a picture. Wipe the battery terminals with a clean, dry cloth. Load new fully charged batteries.
No photograph is taken when the shutter button is pressed.	<ul style="list-style-type: none"> No SmartMedia is loaded. The SmartMedia is fully recorded. The SmartMedia is write-protected. The SmartMedia is not formatted. The SmartMedia contact area is soiled. The SmartMedia is damaged. The Auto Power Off function has switched the camera off. The batteries are exhausted. 	<ul style="list-style-type: none"> Load a SmartMedia. Insert a new SmartMedia or erase some unwanted frames. Remove the write-protection. Format the SmartMedia. Wipe the SmartMedia contact area with a clean dry cloth. Load a new SmartMedia. Switch the camera on. Load fully charged batteries.

Problem	Cause	Remedy
I can't use the flash to take pictures.	<ul style="list-style-type: none"> The flash is set to Suppressed Flash mode. You pressed the shutter button while the flash was charging. The batteries are exhausted. 	<ul style="list-style-type: none"> Set the flash to Auto, Red-Eye Reduction or Forced Flash mode (the flash cannot be used in some modes). Wait until charging is completed before pressing the shutter button. Load fully charged batteries.
The photographed image is dark even though I used the flash.	<ul style="list-style-type: none"> The subject is too far away. Your finger was covering the flash/flash control sensor. 	<ul style="list-style-type: none"> Move closer to the subject. Hold the camera correctly.
The image is blurred.	<ul style="list-style-type: none"> The lens is dirty. You photographed a distant subject with the macro selector switch set to "🌸". You took a close-up shot with the macro selector switch set to "▲". 	<ul style="list-style-type: none"> Clean the lens. Cancel Macro mode. Set the camera to Macro mode.
There is speckling on the image.	<ul style="list-style-type: none"> The shot was taken with a slow shutter speed (long exposure) in a high-temperature environment. 	<ul style="list-style-type: none"> This is a characteristic of CCDs and does not indicate a camera fault.
I can't format the SmartMedia.	<ul style="list-style-type: none"> The SmartMedia is write-protected. 	<ul style="list-style-type: none"> Remove the write-protection. (Peel off the write-protect sticker.)

► If you think the camera is faulty, check the following once more.

Problem	Cause	Remedy
The ERASE ALL function does not erase all the frames. Frame erase does not erase the frame.	<ul style="list-style-type: none"> DPOF settings are specified for some frames. Some frames may be protected. 	<ul style="list-style-type: none"> Cancel the DPOF settings and try again (►P.66). Unprotect frames using the camera on which the protection was first applied.
Nothing happens when I use the camera switches.	<ul style="list-style-type: none"> Camera malfunction. The batteries are exhausted. 	<ul style="list-style-type: none"> Briefly remove the batteries or disconnect the AC power adapter. Then reload the batteries or reconnect the AC power adapter and try again. Load fully charged batteries.
The camera does not emit any sound.	<ul style="list-style-type: none"> The camera volume is set too low. The microphone was blocked during shooting/recording. 	<ul style="list-style-type: none"> Adjust the volume. Take care not to block the microphone during shooting/recording.
When the camera is connected to a personal computer (PC), the shot image appears on the camera's LCD monitor.	<ul style="list-style-type: none"> The special USB cable is not connected correctly to the PC or camera. The PC is not switched on. 	<ul style="list-style-type: none"> Set up the camera and USB cable correctly. Switch the PC on.
The camera no longer works correctly.	<ul style="list-style-type: none"> The camera has suffered an unforeseen problem. 	<ul style="list-style-type: none"> Remove the batteries briefly and then reload the batteries and try again.

System

- **Model:** Digital camera FinePix30i
- **Number of effective pixels:** Approx. 2.0 million pixels
- **CCD sensor**
1/2.7-inch square pixel CCD with RGB color filter
(Number of total pixels: 2.11 million pixels)
- **Number of recorded pixels**
1600 × 1200 pixels/1280 × 960 pixels/640 × 480 pixels
- **File format**
Still image: Design rule for Camera File System compliant (Exif Ver.2.1 JPEG), DPOF compatible
Movie: AVI format, Motion JPEG
Audio: WAV format Exif Ver. 2.1 audio file standard-compliant
- **Storage media:** SmartMedia (3.3V)
- **Standard number of shots per SmartMedia™**

File Size	[2M] 1600 × 1200			[1M] 1280 × 960			[VGA] 640 × 480	Movie (Video)	Audio recording
Quality Mode	FINE	NORMAL	BASIC	FINE	NORMAL	NORMAL	—	—	—
Image Data Size	Approx. 770KB	Approx. 390KB	Approx. 200KB	Approx. 620KB	Approx. 320KB	Approx. 130KB	—	—	—
MG-4S (4MB)	4	9	19	6	12	30	Approx. 23 sec.	Approx. 8 min.	
MG-8S (8MB)	10	19	39	12	25	61	Approx. 47 sec.	Approx. 16 min.	
MG-16S/SW (16MB)	20	39	75	25	49	122	Approx. 94 sec.	Approx. 33 min.	
MG-32S/SW (32MB)	41	79	152	50	99	247	Approx. 191 sec.	Approx. 67 min.	
MG-64S/SW (64MB)	82	159	306	101	198	497	Approx. 385 sec.	Approx. 135 min.	
MG-128SW (128MB)	166	319	613	204	398	997	Approx. 774 sec.	Approx. 272 min.	

- **Sensitivity:** Equivalent to ISO 100
- **Lens:** Fujinon optical fixed-focus lens
- **Focus distance:** f = 5.8 mm
(Equivalent to 38 mm on a 35 mm camera)
- **Viewfinder:** Inverted Galilean finder
- **Exposure control**
TTL 64-zones metering, Program AE, exposure compensation available in Manual still image mode
- **White balance**
Auto (in Manual modes, 7 positions can be selected)
- **Focal range**
Normal: Approx. 60 cm (2.0 ft.) to infinity
Macro: Approx. 8 cm to 15 cm (0.3 ft. to 0.5 ft.)
- **Shutter:** Variable-speed, 1/2 sec. to 1/1000 sec. (using AE)

* The numbers of available shots are shown for formatted SmartMedia. 105

Specifications

- **Aperture:** F4.8 or F11 (automatically selected)
- **Self-Timer:** 10 sec. timer clock
- **Erase modes**
ERASE FRAME, ERASE ALL FRAMES, MUSIC TRACK, ALL MUSIC TRACKS, FORMAT (initialize)
- **LCD monitor**
1.8-inches, 72,000 pixels D-TFD
- **Flash:** Auto flash using flash control sensor
Effective range: Approx. 0.6 m to 3 m (2.3 ft. to 9.8 ft.)
Flash modes: Auto, Red-Eye Reduction, Forced Flash, Suppressed Flash, Slow Synchro

Music

- **Recording media:** SmartMedia with ID (3.3 V)
- **Playback system:** MP3
- **Encryption method:** InfoBind
- **Continuous playback time**
Approx. 4 hours 30 minutes
(using the batteries provided when fully charged)
- **Bass boost:** 2 levels
- **Playback modes**
NORMAL, REPEAT ALL TRACKS, REPEAT TRACK
- **Output:** 5 mW × 2

Standard recording times for SmartMedia with ID

SmartMedia	Bit rate		
	128kbps	112kbps	96kbps
MG-16SW (16MB)	Approx. 15 min.	Approx. 18 min.	Approx. 20 min.
MG-32SW (32MB)	Approx. 30 min.	Approx. 35 min.	Approx. 40 min.
MG-64SW (64MB)	Approx. 60 min.	Approx. 70 min.	Approx. 80 min.
MG-128SW (128MB)	Approx. 120 min.	Approx. 140 min.	Approx. 160 min.

* The recording times shown are for a formatted SmartMedia.

Input/Output Terminals

<Camera>

- **REMOTE (remote controller) socket**
Special remote controller jack
- **(USB) socket**
USB (1) for image data output with a personal computer
- **DC IN 3V (Power input) socket**
Socket for specified AC power adapter

<Remote controller>

- **Headphone socket:** Stereo, mini-jack (3.5 mm dia.)

Audio Output

	Headphone	Speaker
MP3	Yes	No
Movie (Audio)	No	Yes
Voice captioning	No	Yes
Audio recording	Yes	Yes *
Beep	No	Yes

* No audio output when the remote controller connection is used

Power Supply and Others

- **Power supply:** Use one of the following
 - 2AA-size Ni-MH (nickel-metal hydride) batteries (included)
 - AC-3V Power Adapter (sold separately)
- **Available shots / time using the battery (using the batteries provided when fully charged)**

Battery Type	No. of Shots	Audio Recording	
		Recording	Playback
LCD monitor ON	Approx. 120	Approx. 80 min.	Approx. 80 min.
LCD monitor OFF	Approx. 300	Approx. 240 min.	—

The number of shots shown here is an approximate guide to the number of consecutive shots that can be taken based on 50% flash usage at normal temperatures. However, the actual number of available shots will vary depending on the ambient temperature when the camera is used and the amount of charge in the batteries.

- **Conditions for use**
Temperature: 0°C to +40°C (+32°F to +104°F)
80% humidity or less (no condensation)
- **Camera dimensions (W / H / D)**
84.7 mm × 72.5 mm × 29.5 mm/3.3 in. × 2.9 in. × 1.2 in.
(not including accessories and attachments)
- **Camera mass (weight):** Approx. 150 g/5.3 oz.
(not including accessories, batteries or SmartMedia)
- **Mass (weight) for photography:** Approx. 205 g/7.2 oz.
(including batteries and SmartMedia)
- **Accessories:** See P.7
- **Optional Accessories:** See P.91-92

- * These specifications are subject to change without notice. FUJIFILM shall not be held liable for damages resulting from errors in this Owner's Manual.
- * The LCD monitor on your digital camera is manufactured using advanced high-precision technology. Even so, small bright points and anomalous colors (particularly around text) may appear on the monitor. These are normal display characteristics and do not indicate a fault with the monitor. This phenomenon will not appear on the recorded image.
- * The operation error may be caused in a digital camera by the strong radio interference (i.e. electric fields, static electricity, line noise, etc.).
- * FinePix30i cameras sold in Japan are equipped with a function that allows you to connect the camera to a mobile phone to send images. This function is not available on models sold outside Japan.

Explanation of Terms

DPOF:

Digital Print Order Format
DPOF is a format used for recording information on a storage media (image memory card, etc.) that allows you to specify which of the frames shot using a digital camera are printed and how many prints are made of each image.

EV:

A number that denotes Exposure Value. The EV is determined by the brightness of the subject and sensitivity (speed) of the film or CCD. The number is larger for bright subjects and smaller for dark subjects. As the brightness of the subject changes, a digital camera maintains the amount of light hitting the CCD at a constant level by adjusting the aperture and shutter speed.
When the amount of light striking the CCD doubles, the EV increases by 1. Likewise, when the light is halved, the EV decreases by 1.

JPEG:

Joint Photographics Experts Group
A file format used for compressing and saving color images. The compression ratio can be selected, but the higher the compression ratio, the poorer the quality of the expanded image.

Motion JPEG:

A type of AVI (Audio Video Interleave) file format that handles images and sound as a single file. Images in the file are recorded in JPEG format. Motion JPEG can be played back by QuickTime 3.0 or later.

MP3:

An acronym for MPEG1 Audio Layer 3. Denotes an audio compression format included in the MPEG video and audio compression standard. The MP3 format compresses audio data to approximately 1/10 of its original size by excluding all audio information that is not audible to humans.

PC Card:

A generic term for cards that meet the PC Card Standard.

PC Card Standard:

A standard for PC cards determined by the PCMCIA.

PCMCIA:

Personal Computer Memory Card International Association (US).

PNG:

An acronym for Portable Network Graphic.
As the name suggests, this is an image format created to facilitate the handling of image data over networks and has emerged as the new replacement for the GIF format. As such, it has many of the GIF format characteristics (optimized for graphics, compact file sizes and lossless compression) but does not have the limitations of the GIF format, such as being restricted to 256 colors.

VGA:

A graphics standard for personal computers that indicates an image size of 640×480 pixels.

WAVE:

A standard format used on Windows systems for saving audio data. WAVE files have the ".WAV" file extension and the data can be saved in either compressed or uncompressed format. This camera use PCM recording.
WAVE files can be played back on a personal computer using the following software:
Windows : MediaPlayer
Macintosh: QuickTime Player
* QuickTime 3.0 or later

White Balance:


Whatever the kind of the light, the human eye adapts to it so that a white object still looks white. On the other hand, devices such as digital cameras see a white subject as white by first adjusting the color balance to suit the color of the ambient light around the subject. This adjustment is called matching the white balance. A function that automatically matches the white balance is called an **Automatic White Balance function**.


Safety Notes

- To ensure that you use your FinePix30i camera correctly, read these Safety Notes and your Owner's Manual carefully beforehand.
- After reading these Safety Notes, store them in a safe place.


About the Icons


The icons shown below are used in this document to indicate the severity of the injury or damage that can result if the information indicated by the icon is ignored and the product is used incorrectly as a result.


 **WARNING** This icon indicates that death or serious injury can result if the information is ignored.

 **CAUTION** This icon indicates that personal injury or material damage can result if the information is ignored.

The icons shown below are used to indicate the nature of the information which is to be observed.

 Triangular icons notify the user of information requiring attention ("Important").

 Circular icons with a diagonal bar notify the user that the action indicated is prohibited ("Prohibited").

 Filled circles with an exclamation mark notify the user of an action that must be performed ("Required").

WARNING

If a problem arises, switch the camera off, remove the battery and disconnect and unplug the AC power adapter.

Continued use of the camera when it is emitting smoke, is emitting any unusual odor, or is in any other abnormal state can cause a fire or electric shock.

- Contact your FUJIFILM dealer.



Unplug from power socket.

Do not allow water or foreign objects to enter the camera.

If water or foreign objects get inside the camera, switch the camera off, remove the battery and disconnect and unplug the AC power adapter.

Continued use of the camera can cause a fire or electric shock.

- Contact your FUJIFILM dealer.



Do not place the camera on an unstable surface.

This can cause the camera to fall or tip over and cause injury.



WARNING

Never attempt to modify or disassemble the camera. (Never open the casing.)

Do not use the camera when it has been dropped or the casing is damaged.

This can cause a fire or electric shock.

- Contact your FUJIFILM dealer.



Do not disassemble.

Do not use the camera in the bathroom or shower.

This can cause a fire or electric shock.



Do not use in the bathroom or shower.

Never attempt to take pictures while in motion.

Do not use the camera while you are walking or operating a moving car or other vehicle.

This can result in you falling down or being involved in a traffic accident.



Do not touch any metal parts of the camera during a thunderstorm.

This can cause an electric shock due to induced current from the lightning discharge.



WARNING

Do not modify, heat or unduly twist or pull the connection cord and do not place heavy objects on the connection cord.

These actions could damage the cord and cause a fire or electric shock.

- If the cord is damaged, contact your FUJIFILM dealer.



Do not use the batteries except as specified.

Load the batteries with the poles positioned as indicated by the ⊕ and ⊖ marks.



Do not heat, modify or attempt to disassemble the batteries.

Do not drop or subject the batteries to impacts.

Do not attempt to recharge lithium or alkaline batteries.




Do not store the batteries with metallic products.






Do not use chargers other than the specified model to charge the battery.






Any of these actions can cause the batteries to burst or leak and cause fire or injury as a result.







Safety Notes

 WARNING	
<p>Use only the batteries or AC power adapter specified for use with this camera.</p> <p>Do not use voltages other than the power supply voltage shown.</p> <p>The use of other power sources can cause a fire.</p>	
<p>Do not use the audio or music functions while moving.</p> <p>Do not use the camera while you are walking or operating a moving car or other vehicle.</p> <p>This can result in you falling down or being involved in a traffic accident.</p>	

 CAUTION	
<p>Do not use this camera in locations severely affected by oil fumes, steam, humidity or dust.</p> <p>This can cause a fire or electric shock.</p>	
<p>Do not leave this camera in places subject to extremely high temperatures.</p> <p>Do not leave the camera in locations such as a sealed vehicle or in direct sunlight.</p> <p>This can cause a fire.</p>	
<p>Keep out of the reach of small children.</p> <p>This product could cause injury in the hands of a child.</p>	
<p>Do not place heavy objects on the camera.</p> <p>This can cause the heavy object to tip over or fall and cause injury.</p>	

 CAUTION	
<p>Do not move the camera while the AC power adapter is still connected.</p> <p>Do not pull on the connection cord to disconnect the AC power adapter.</p> <p>This can damage the power cord or cables and cause a fire or electric shock.</p>	
<p>Do not cover or wrap the camera or the AC power adapter in a cloth or quilt.</p> <p>This can cause heat to build up and distort the casing or cause a fire.</p>	
<p>When you are cleaning the camera or you do not plan to use the camera for an extended period, remove the battery and disconnect and unplug the AC power adapter.</p> <p>Failure to do so can cause a fire or electric shock.</p>	
<p>Using a flash too close to a person's eyes may temporarily affect the eyesight.</p> <p>Take particular care when photographing infants and young children.</p>	

 CAUTION	
<p>Do not use the AC power adapter when the plug is damaged or the plug socket connection is loose.</p> <p>This could cause a fire or electric shock.</p>	
<p>Request regular internal testing and cleaning for your camera.</p> <p>Build-up of dust in your camera can cause a fire or electric shock.</p> <ul style="list-style-type: none">● Contact your FUJIFILM dealer to request internal cleaning every 2 years.	
<p>Do not listen to music at high volumes for long periods and do not set the audio volume to high at the outset.</p> <p>This could cause impaired hearing.</p>	

EC Declaration of Conformity

We

Name : Fuji Photo Film (Europe) G.m.b.H.
Address : Heesenstrasse 31
40549 Dusseldorf, Germany

declare that the product

Product Name : FUJIFILM DIGITAL CAMERA FinePix30i
Manufacturer's Name : Fuji Photo Film Co., Ltd.
Manufacturer's Address : 26-30, Nishiazabu 2-chome, Minato-ku,
Tokyo 106-8620, Japan

is in conformity with the following Standards

Safety : EN60950
EMC : EN55022 : 1998 Classe B
EN55024 : 1998
EN61000-3-2 : 1995 + A1:1998 + A2:1998

following the provision of the EMC Directive (89/336/EEC, 92/31/EEC and 93/68/EEC) and Low Voltage Directive (73/23/EEC).



Dusseldorf, Germany

November 1, 2001

Place

Date

Signature/Managing Director



Bij dit produkt zijn batterijen geleverd. Wanneer deze leeg zijn, moet u ze niet weggooien maar inleveren als KCA



FUJI PHOTO FILM CO., LTD.

26-30, Nishiazabu 2-chome, Minato-ku, Tokyo 106-8620, Japan

Printed on recycled paper.

Free Manuals Download Website

<http://myh66.com>

<http://usermanuals.us>

<http://www.somanuals.com>

<http://www.4manuals.cc>

<http://www.manual-lib.com>

<http://www.404manual.com>

<http://www.luxmanual.com>

<http://aubethermostatmanual.com>

Golf course search by state

<http://golfingnear.com>

Email search by domain

<http://emailbydomain.com>

Auto manuals search

<http://auto.somanuals.com>

TV manuals search

<http://tv.somanuals.com>