

FUJIFILM  
Value from Innovation

80<sup>th</sup>  
Anniversary

X-T1

<http://fujifilm-x.com/x-t1/>



©To ensure correct usage, read owner's manual carefully before using your equipment.  
All photos, illustrations, drawings and other images in this brochure are intended for illustrative purposes only.  
Microsoft, Windows and Windows logo are trademarks,  
or registered trademarks of Microsoft Corporation in the United States and/or other countries.  
Macintosh and Mac OS are trademarks of Apple Computer, Inc., registered in the U.S. and other countries.  
SDXC logo is a trademark. All other trademarks are the property of their respective holders.  
SILKYPIX® is a registered trademark of Ichikawa Soft Laboratory Co., Ltd. in Japan.



Specifications are subject to change without notice

For more information, please visit our website

[http://www.fujifilm.com/products/digital\\_cameras/index.html](http://www.fujifilm.com/products/digital_cameras/index.html)

FUJIFILM  
FUJIFILM Corporation



Trusted Quality.

FUJIFILM's acclaimed X-Series technology once again places you, the photographer, in the leading role, letting you capture any photographic moment exactly as you intended. The central themes of the X-series are simplicity and elegance; the camera is a precision instrument, but one that's combined with a functional beauty. Now, this fusion has resulted in a new high-performance premium camera in the X-series, the X-T1, and, like every model that's come before it, you'll find the joy of photography is hard-wired into its DNA, electrifying your instincts as a photographer, daring you to stretch your imagination and capture perfect images every time you shoot.

Pure Photography. Pure Joy.

X-T1

















# X-Photographers

meet

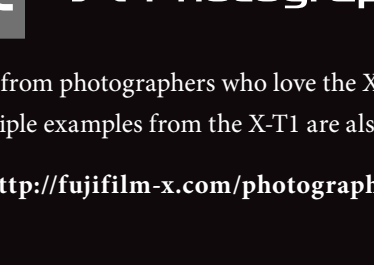
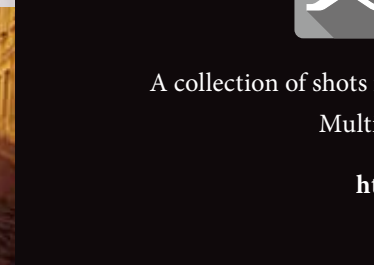
## X-T1

Every day, and in every place around the world,  
more and more professional photographers  
have their finger on the shutter of an X-series camera  
– and these experienced pros have chosen "X" for a good reason.  
Together they are the "X-Photographers".

As professionals, they've used X-series cameras  
in the most challenging situations and found them to be the perfect partners.  
Now you can discover what the critical eyes of these world-class photographers saw  
when they encountered the new X-T1,  
the X-series' SLR-style high-performance premium camera from FUJIFILM.



XF18-55mmF2.8-4 R LM OIS | F3.6 1/800sec. ISO3200 / Wojtek Wojtczak (Poland)



A collection of shots from photographers who love the X-series is gathered here.  
Multiple examples from the X-T1 are also listed.

<http://fujifilm-x.com/photographers/>





# The Complete View Expansive Real Time Viewfinder

Awaken your senses as never before  
with the world's largest\*1 and fastest\*2 Multi Mode Viewfinder.



The world's highest\*1 viewfinder magnification ratio of 0.77x  
The world's fastest\*2 display with a lag-time of just 0.005 sec.

With its high-resolution 2.36 million dot OLED display, and the world's highest magnification ratio of 0.77x\*1, the X-T1's Real Time Viewfinder allows a true connection to your subject and a purely immersive shooting experience. The viewfinder achieves a wide angle of view of 31°, and with the display's lag time of just 0.005sec. – less that a tenth of conventional cameras – you'll immediately see any changes to your composition, keeping you in touch with whatever you're shooting. The viewfinder's newly designed Graphic User Interface provides a fresh shooting experience with clear details and a comfortable at-a-glance view of your settings.

\*1 Market beating viewfinder magnification ratio. Approx. 0.77x magnification with a 50mm lens (35mm format equivalent) set to infinity and -1.0m<sup>-1</sup>. Fujifilm research as of January 2014 relating to the digital camera market.  
\*2 Fujifilm research as of January 2014.

multi mode viewfinder



## Horizontal Position



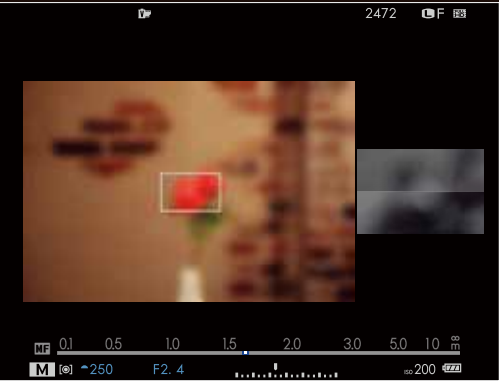
### [ FULL ]

Taking full advantage of the high magnification ratio of the X-T1's viewfinder, "FULL" mode gives you the full field of vision available. Any obstruction of the view is avoided by placing shooting information at the top and bottom of the display screen. Ideal for composing expansive landscapes, Wide is also great when manually focusing portraits and other subjects, allowing you to easily determine the perfect focus.



### [ NORMAL ]

When shooting with Autofocus, the "NORMAL" mode lets you concentrate on framing the shot while keeping you aware of how the shooting conditions are changing, making it the perfect setting for sports and action photography.

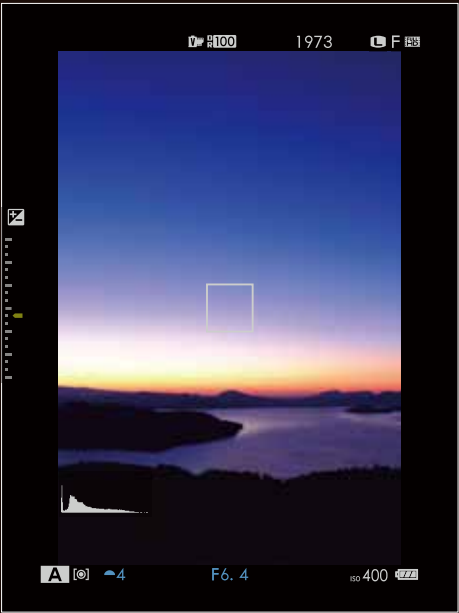


### [ DUAL ]

In the viewfinder's "DUAL" mode, you can enjoy a view of the subject unlike anything seen through a traditional optical viewfinder. In Manual Focus, Dual cleverly displays a split screen that lets you see both a regular view of the scene, as well as the Focus Assist view (Focus Peak Highlight and Digital Split Image Focus) at the same time, so focusing is easy and precise.



## Vertical Position



### [ VERTICAL ]

Hold the camera vertically and the information display automatically and smoothly rotates so it's ideally positioned for easy reading. Without taking your eye from the viewfinder, you can also check your images in vertical orientation for a truly seamless shooting experience.

\* It is necessary to go to the "SCREEN SET-UP" menu and set "Auto ROTATE Playback" to OFF.





# Freeze the moment in time – with X-T1, it's like a reflex.

Phase-detection Autofocus, AF Tracking, high-speed continuous shooting and expanded SD Card compatibility allow super-fast, super-smart performance.

## Faster together – the X-Trans CMOS II sensor and EXR Processor II.

The X-T1's X-Trans CMOS II sensor features embedded phase-detection Autofocus, and teamed with the high-speed performance of the EXR Processor II it can achieve faster response in every aspect of its operation – including the world's fastest AF speed of 0.08 sec.\*1

\*1 Fastest AF speed among digital cameras equipped with an APS-C or larger sensor. Measurement conducted by Fujifilm research based on CIPA guidelines using the X-T1 equipped with XF14mmF2.8 R lens in High Performance mode as of January 2014.

\*2 Equipped with XF27mmF2.8 in High Performance mode. \*3 MF mode.

		The world's fastest AF speed <b>0.08 sec.*1</b>
Start-up time <b>0.5 sec.*2</b>	Shooting interval <b>0.5 sec.*3</b>	Shutter time lag <b>0.05 sec.</b>

## Capture the thrill of motion with predictive AF and AF tracking high-speed 8.0fps continuous shooting.

Faster response means more confidence in capturing the moment, and the X-T1 delivers it. Using phase-detection autofocus, combined with high-speed subject tracking, the AF accurately follows your subject through the frame, even at the highest continuous shooting speed of 8.0 frames / sec.\*4

\*4 AF-C shooting mode



## The World's first compatibility with UHS-II format SD memory cards\*5

With an UHS-II SD memory card installed, the data writing speed in continuous mode increases to about twice that of a conventional card.\*6

\*5 Fujifilm research as of January 2014.  
\*6 RAW shooting mode.



## Time-lapse photography - Interval timer function

Set the starting time, the shooting interval (1 sec. to 24 hr.) and finally the number of frames (1-999), and the X-T1 does the rest, allowing you to discover the unique world of time-lapse photography.





## Tough performance

Broaden your horizons and encounter new photo opportunities with the X-T1's dust-resistant, water-resistant and low-temperature operation.

Weather sealing protects the precision components inside, and the X-T1's rugged design allows operation in temperatures as low as -10°C.

The weather resistant structure is sealed in approximately 80 places and is both dust and water resistant. Additionally it is designed to cope in temperatures as low as -10°C allowing field photography without the typical worries about the weather, season or general shooting environment. When used in conjunction with the XF18-135mm and Vertical Battery Grip VG-X-T1, which have the same sealing structure as the camera body, the camera offers a reliable system for your field photography in damp conditions.



Durable full magnesium body, milled aluminum dials and reinforced LCD screen.

Strong doesn't have to mean heavy and with its body made from die-cast magnesium, the X-T1's chassis is not only sturdy and durable, but also compact and lightweight. The exposure compensation, shutter speed and ISO sensitivity dials are all precision milled from aluminum and deliver a reassuring click at every notched setting, while reinforced glass is used for added protection of the LCD screen. In every detail, the high-performance X-T1 is designed to be tough and reliable.







# X-DNA

Rediscover the joy of capturing the moment  
– there's no substitute.







## A passion for image quality that's second to none.

When you master the craft of photography it becomes art.

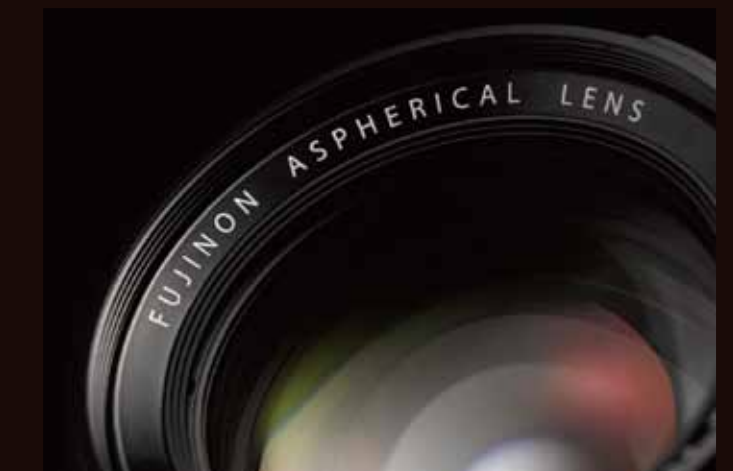
80 years of photo film research adds up to color reproduction that's second to none.

Over decades of film manufacture Fujifilm has perfected the skill of color reproduction and it lives on in the X-T1. Pleasing skin tones, natural blues and greens, and the ability to perfectly record the diversity of white balance conditions throughout the day are all taken in the camera's stride, and it also boasts a wide dynamic range for better reproduction of detail.



Fujinon, the emblem of lens reliability.

To match the ultimate camera, Fujinon makes the ultimate lenses. All optics are developed in house and the close collaboration of lens designers and software engineers is a Fujinon tradition, allowing maximum resolution to be achieved while eliminating defects. To further improve performance, resolve clear images even under difficult lighting conditions, and eliminate ghosting and flare, Fujinon's High Transmittance Electron Beam Coatings are applied.





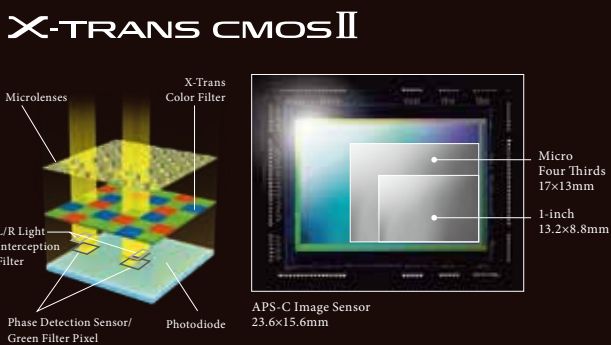


## Captures your world with vivid color and texture

To realize your photographic vision, every shot is brimming with high-resolution detail, even at the highest sensitivity settings.

### Maximizing the power of the APS-C-sized X-Trans CMOS II sensor

The X-T1's large APS-C-sized 16M X-Trans CMOS II sensor features an original color filter array that minimizes moire and color aberrations, and also includes embedded phase detection pixels. The result is image quality that rivals a full-frame sensor.



### Lens Modulation Optimizer (LMO) and OLPF-less structure

In this radical sensor design, the need for an optical low-pass filter (OLPF) is eliminated and therefore every ray of light is able to reach the sensor for maximum clarity. The EXR Processor II also features Lens Modulation Optimizer technology to analyze and compensate for diffraction blur, thereby avoiding any drop in resolution which may occur when shooting with a narrow aperture.







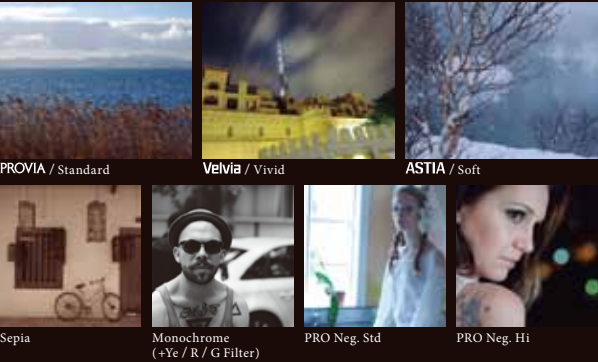
# A masterpiece of color that will inspire any photographer

Fujifilm takes pride in the uncompromising pursuit of perfect color reproduction.

## Film Simulation

– adding impact and depth to photos.

With Film Simulation, you can choose from classic Fujifilm photo styles, and give your pictures varied color and tone to suit the subject, just like pros did with film. There's standard PROVIA, vivid Velvia, and ASTIA with its true-to-life skin tones; PRO Neg. Std and PRO Neg. Hi, which are portrait modes based on professional color negative film; and Monochrome expression with three different filter effects as well as Sepia.



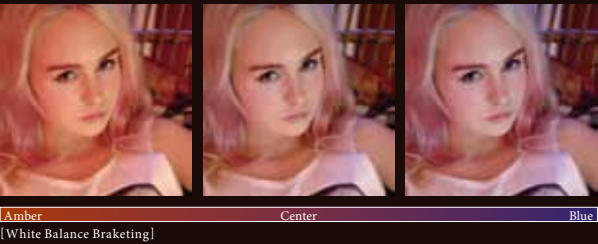
## A remarkable leap in high sensitivity – maximum ISO of 51,200

To broaden photographic opportunities in low-light scenes, you'll find an expanded sensitivity range, which now extends to an impressive ISO 51200. To combat noise at these ultra-high sensitivity settings, the arrangement of components and circuits around the sensor has been redesigned, keeping blacks black, with minimal grain and no color casts.



## Wide selection of Auto Bracketing functions

With a choice of five different auto bracketing functions (AE, ISO Sensitivity, Dynamic Range, Film Simulation and White Balance), you're ready to explore a whole world of photographic effects with just one press of the shutter.





Each engraved marking on the dials reminds you of the essential appeal of using a precision photographic tool.

The X-T1 brings you back to the very essence of photography – the control of light – and it comes via the manual shutter speed, exposure compensation, ISO sensitivity and metering dials. Including the drive dial, all five dials are intuitively arranged on the camera's top-plate and the use of double-deck dials both simplifies operation and streamlines the elegant design.



X-T1 Design

1. 3.0 inch, 1.04 million-dot high-resolution LCD Monitor with a tilting screen.  
The X-T1's big, bright LCD screen is clear to see under all conditions whether you're inside or out, thanks to its improved refresh rate. Composing and reviewing images has never been easier, while in tough shooting conditions, the reinforced glass screen enhances durability.
2. Easy-to-find controls mean you never need to take your eye from the viewfinder.  
With the Diopter adjustment control to the left of the viewfinder, and the Viewfinder Mode switch on the right, you can completely immerse yourself in composing the shot by never taking your eye off the subject.
3. The functional excellence and reliability of metal analog dials – the hallmarks of a precision instrument  
The frequently used shutter speed and exposure compensation ( $\pm 3\text{EV}$ ) dials are on the right of the camera's top-plate, and the ISO sensitivity is on the left. In each case, the tactile quality of the milled aluminum dials enhances operational comfort and gives a high-quality feel.
4. Every click of the double-deck dials is a statement of X-series quality.  
The metering dial sits neatly below the shutter speed dial, and the drive dial is below the ISO sensitivity.
5. "Made in Japan" – the seal of quality you can rely on.  
Everything within the X-T1's design and production process has been aimed at creating a precision instrument, so you can be sure of quality and performance that's worthy of the "X" name. And with an eye on its use in challenging environments it's a tough companion, too.
6. Customizable for shooting the way you like it.  
A total of six function buttons are arranged on the top, front and rear, including the four-way selector, and together with the Q button, you can instantly access any settings you need.
7. Designed for perfect balance with the entire XF lens range.  
Whether twinned with prime lenses or telephoto zooms, the X-T1 promises a fine balance of handling and stability with any lens, and a silhouette that's as functional as it is striking.





## The joy of instantly sharing your shots.

The X-T1's powerful management functions expand your photographic freedom in everything from how you shoot to how you manage your files.

## SHARE

Instantly e-mail the moments that move you or upload and share them on social networks with easy wireless image transfer to your smartphone.

For today's photographers, it's all about uploading your high quality images to blogs and social network sites as soon as you capture them, and X-T1 is ready with multiple ways to share. Just download the free dedicated FUJIFILM Camera Remote app to your mobile device. There's no need to enter an ID, password or to change other troublesome settings. With just the touch of a button, you can transfer your high-quality images to your smartphone or tablet, selecting and transferring up to 30 images at a time. Using the same app on your smart device, you can also view the images stored in your camera, and then select and transfer just the ones you want. This powerful app also lets your camera acquire location data from your smartphone and geotag your images. Another free app automatically transfers and saves photos on your PC via Wi-Fi\*.

★1 Wi-Fi\* is a registered trademark of the Wi-Fi Alliance

★2 This function requires installation of the free application software FUJIFILM PC AutoSave in your personal computer.



## SHOOT

Focus with a Touch with the new smart application – FUJIFILM Camera Remote.

With the new dedicated "FUJIFILM Camera Remote" application, you can focus and trigger the camera release from your smartphone or tablet. The app not only lets you adjust focus, but also control settings like shutter speed, aperture, exposure compensation and ISO sensitivity. You can even apply other settings like Film Simulation, self-timer, and flash while "Touch AF" lets you focus from your smartphone or tablet, too. Imagine all the situations where this smart assistant will come in handy! Take commemorative group photos with yourself in the shot, capture wildlife photos, or remotely release the shutter for night shots free from camera shake. The photographic possibilities are endless.







# Equipped for any shooting situation, the X-T1 camera system

Ready for every scene and purpose, X-T1 has the complete lineup of accessories.



〔 Vertical Battery Grip 〕  
VG-XT1



Equipped with a shutter release button, twin command dials, AE-L button, AF-L button and Focus Assist button, the vertical grip not only lets you hold the X-T1 vertically with a more confident grip, but also puts all the controls where your fingers expect them to be. The tripod mounting socket is located in line with the camera's optical axis, just like on the regular body. In addition to comfortable shooting, the vertical grip also holds an auxiliary battery (NP-W126). Combined with the rechargeable battery in the body, the battery in the dust- and water-resistant vertical grip provides enough charge for approximately 700 frames.



〔 Included Flash 〕  
EF-X8



Designed to perfectly complement the X-T1's design, the included flashgun has a guide number of 11 (ISO 200)

★ At ISO100, guide number of 8 based on CIPA guidelines.



〔 Hand Grip 〕  
MHG-XT



While never sacrificing the X-T1's streamlined design, the metal hand grip provides a secure hold and masterful control of the camera. Just like the Vertical Grip, the tripod mounting screw socket is aligned with the optical axis. Also, you can access the battery compartment and memory card without removing the grip. The bottom face is equipped with rails for use with a quick release plate.



〔 Leather Case 〕  
BLC-XT1



The stylish, authentic leather case adds a wonderfully tactile feel to shooting and perfectly suits the X-T1's classic design. With the X-T1 snugly protected within it you can even change batteries without removing the camera and a matching leather shoulder strap and protective cloth to wrap around your camera are included.



The growing range of X mount lenses is primed to capture the world around you.

Every X mount lens is engineered for exceptional performance. In addition to high-precision optical design, the lenses integrate the latest digital technology, making them ideal for the X-T1. From wide-aperture, fixed focal length models featuring superior brightness to zoom lenses designed for both exceptional image quality and "go everywhere" mobility, they're the product of decades of Fujinon development expertise combined with cutting-edge digital design.



XF LENS						XC LENS					
Single-focal Length Lens						Zoom Lens					
Ultra Wide Angle Lens	Wide Angle Lens	Large Aperture Wide Angle Lens	Wide Angle Lens	Large Aperture Standard Lens	Large Aperture Mid-range Telephoto Lens	Mid-range Telephoto Lens	Ultra Wide Zoom Lens	Standard Zoom Lens	Telephoto Zoom Lens	Standard Zoom Lens	Telephoto Zoom Lens
XF14mmF2.8 R	XF18mmF2 R	XF23mmF1.4 R	XF27mmF2.8	XF35mmF1.4 R	XF56mmF1.2 R	XF60mm F2.4 R Macro	XF10-24mm F4 R OIS	XF18-55mm F2.8-4 R LM OIS	XF55-200mm F3.5-4.8 R LM OIS	XC16-50mm F3.5-5.6 OIS	XC50-230mm F4.5-6.7 OIS
External dimensions*: φ65mm×58.4mm Weight (approx.): 235g Filter size: φ58mm	External dimensions*: φ64.5mm×33.7mm Weight (approx.): 116g Filter size: φ52mm	External dimensions*: φ72mm×63mm Weight (approx.): 300g Filter size: φ62mm	External dimensions*: φ61.2mm×23mm Weight (approx.): 78g Filter size: φ39mm	External dimensions*: φ65mm×50.4mm Weight (approx.): 187g Filter size: φ52mm	External dimensions*: φ73.2mm×69.7mm Weight (approx.): 405g Filter size: φ62mm	External dimensions*: φ64.1mm×63.6mm Weight (approx.): 215g Filter size: φ39mm	External dimensions*: φ78mm×87mm (Wide) / 87mm (Telephoto) Weight (approx.): 410g Filter size: φ72mm	External dimensions*: φ65mm×70.4mm (Wide) / 97.9mm (Telephoto) Weight (approx.): 310g Filter size: φ58mm	External dimensions*: φ75mm×118mm (Wide) / 177mm (Telephoto) Weight (approx.): 580g Filter size: φ62mm	External dimensions*: φ62.6mm×65.2mm (Wide) / 98.3mm (Telephoto) Weight (approx.): 195g Filter size: φ58mm	External dimensions*: φ69.5mm×111mm (Wide) / 177mm (Telephoto) Weight (approx.): 375g Filter size: φ58mm
Diameter × Length (approx.), distance from camera lens mount flange											

X MOUNT Lens Roadmap

	2012	2013	2014	2015
Single-focal Length	<div>XF60mmF2.4 R Macro f=60mm (91mm)</div> <div>XF56mmF1.2 R f=56mm (85mm)</div> <div>XF35mmF1.4 R f=35mm (53mm)</div> <div>XF27mmF2.8 f=27mm (41mm)</div> <div>XF23mmF1.4 R f=23mm (35mm)</div> <div>XF18mmF2 R f=18mm (27mm)</div> <div>XF14mmF2.8 R f=14mm (21mm)</div>			
Zoom		<div>XF50-140mmF2.8 R OIS WR</div> <div>XF16-55mmF2.8 R OIS WR</div> <div>XF10-24mmF4 R OIS f=10-24mm (15-36mm)</div> <div>XF55-200mmF3.5-4.8 R LM OIS f=55-200mm (84-305mm)</div> <div>XF18-55mmF2.8-4 R LM OIS f=18-55mm (27-84mm)</div> <div>XF18-135mmF3.5-5.6 R OIS WR</div> <div>XC50-230mmF4.5-6.7 OIS f=50-230mm (78-360mm)</div> <div>XC16-50mmF3.5-5.6 OIS f=16-50mm (24-76mm)</div>		
Zeiss Touit Lens	<div>Touit 1.8/32</div> <div>Touit 2.8/12</div>	<div>Touit 2.8/50M</div>		

\* This is not the image of the final product.  
The above road map is as of January 28th, 2014. Specifications are subject to change.  
\* Each value in ( ) is equivalent to 35mm format.  
\* For enquiries or information about the Carl Zeiss X-mount lenses, please click on the following URL: <http://lenses.zeiss.com>

Breathe new life into classic lenses with the M Mount Adapter.

The M-Mount adapter lets you use an incredibly wide selection of classic lenses with the X-T1 camera body. Designed and manufactured with a high degree of planarity and extreme precision, the contact surface with the camera is made of the same metal as the mount surface on the body for a perfect fit that doesn't compromise the X-T1's refined design. And to ensure first-class image quality, users can use the Mount Adapter Setting in the X-T1's menu to compensate for distortion, peripheral illumination and color shading from adapted lenses.

M Mount Adapter

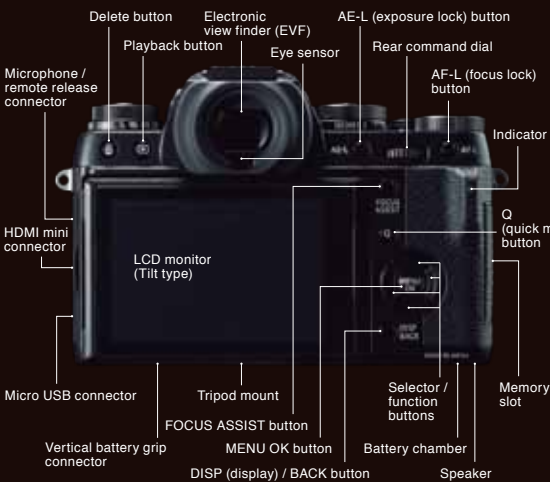
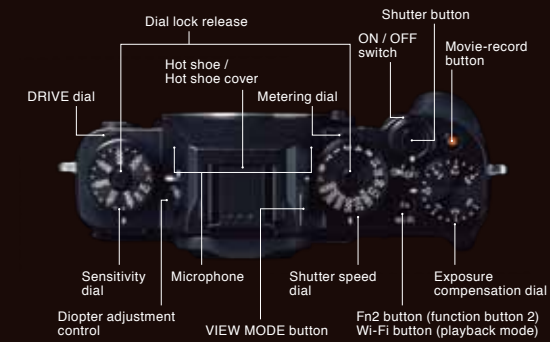




## X-T1 System Chart



## Parts of the Camera



## X-T1 Specifications

Model Name	FUJIFILM X-T1
Number of effective pixels	16.3 million pixels
Image sensor	23.6mmx15.6mm (APS-C) X-Trans II CMOS with primary color filter Total number of pixels: 16.7 million pixels
Sensor Cleaning system	Ultra Sonic Vibration
Storage media	SD memory card / SDHC memory card / SDXC (UHS-II) memory card *1
File format	still image JPEG (Exif Ver 2.3 *2), RAW (RAF format), RAW+JPEG (Design rule for Camera File system compliant, DPOF-compatible)
	movie Movie File Format: MOV Movie Video Compression: H.264 Audio: Linear PCM Stereo
Number of recorded pixels	L [3:2] 4896x3264 [16:9] 4896x2760 [1:1] 3264x3264 M [3:2] 3456x2304 [16:9] 3456x1944 [1:1] 2304x2304 S [3:2] 2496x1664 [16:9] 2496x1408 [1:1] 1664x1664 [Motion Panorama] L Vertical: 2160x9600 / Horizontal: 9600x1440 M Vertical: 2160x6400 / Horizontal: 6400x1440
Lens mount	FUJIFILM X mount
Sensitivity	AUTO (Control available up to ISO6400) Equivalent to ISO200 - 6400 (Standard Output Sensitivity) Extended output sensitivity: Equivalent to ISO100, 12800, 25600 and 51200
Exposure control	TTL 256-zone metering, Multi / Spot / Average
Exposure mode	Programmed AE / Shutter Speed priority AE / Aperture priority AE / Manual exposure
Exposure compensation	-3.0EV - +3.0EV, 1/3EV step (movie recording: -2.0EV - +2.0EV)
Image Stabilizer	Supported with OIS type lenses
Face Detection	Yes
Shutter type	Focal Plane Shutter
Shutter speed	(P mode) 1/4sec. to 1/4000sec., (All other modes) 30sec. to 1/4000sec. Bulb (max.60min.) Time 1/2 to 30sec. Synchronized shutter speed for flash: 1/180sec. or slower
Continuous shooting	Approx. 8.0fps (JPEG: max. approx. 47 frames) Approx. 3.0fps (JPEG: up to the capacity of the card) *Recordable frame number may vary depending on the type of memory card used. *The frame rate varies with shooting condition and the number of images recorded.
Auto bracketing	AE Bracketing (±1/3EV, ±2/3EV, ±1EV) Film Simulation Bracketing (Any 3 types of film simulation selectable) Dynamic Range Bracketing (100%-200%-400%) ISO sensitivity Bracketing (±1/3EV, ±2/3EV, ±1EV) White balance Bracketing (±1, ±2, ±3)
Focus	mode Single AF / Continuous AF / MF Distance Indicator type Intelligent Hybrid AF (TTL contrast AF / TTL phase detection AF), AF assist illuminator available AF frame selection Area (EVF / LCD: 49 areas with 7x7) / Multi *Changeable size of AF frame among 5 types
White balance	Automatic scene recognition Custom / Color temperature selection (K) Preset: Fine / Shade / Fluorescent light (Daylight) / Fluorescent light (Warm White) / Fluorescent light (Cool White) / Incandescent light / Underwater
Self-timer	10sec. / 2sec. Delay
Interval timer shooting	YES Setting: Interval, Number of shots, Starting time
Flash	External flash EF-X8 (included) (Super Intelligent Flash) Guide number: approx. 8 (ISO100-m) / approx 11 (ISO200-m)
Flash modes	Activated when external flash is connected Red-eye removal OFF: Auto / Forced Flash / Slow Synchro / Suppressed Flash / Rear-curtain Synchro / Commander Red-eye removal ON: Red-eye Reduction Auto / Red-eye Reduction & Forced Flash / Suppressed Flash / Red-eye Reduction & Slow Synchro / Red-eye Reduction & Rear-curtain Synchro / Commander *Red-eye removal is active when Face Detection is set to ON.
Hot shoe	Yes (Dedicated TTL Flash compatible)

Viewfinder	0.5-in., approx. 2,360K-dot OLED color viewfinder Coverage of viewing area vs. capturing area: approx. 100% Eye point: approx. 23mm (from the rear end of the camera's eyepiece) Diopter adjustment: -4m <sup>-1</sup> to +2m <sup>-1</sup> Magnification: 0.77x with 50mm lens (35 mm format equivalent) at infinity and diopter set to -1.0m <sup>-1</sup> Diagonal angle of view: approx. 38° (Horizontal angle of view: approx. 31°) Built-in eye sensor
LCD monitor	3.0-in., aspect ratio 3:2, approx. 1,040K-dot, Tilt type color LCD monitor (Approx. 100% coverage)
Movie recording	[Full HD] 1920x1080 60p/30p Continuous recording: up to approx. 14min. [HD] 1280x720 60p/30p Continuous recording: up to approx. 27min. *Use a card with SD Speed Class with CLASS10 or higher.
Film Simulation mode	10 type (PROVIA/STANDARD, Velvia/VIVID, ASTIA/SOFT, PRO Neg HI, PRO Neg. Std, MONOCHROME, MONOCHROME+Ye FILTER, MONOCHROME+R FILTER, MONOCHROME+G FILTER, SEPIA)
Dynamic range setting	AUTO (100 - 400%), 100%, 200%, 400%
Advanced filter	Toy camera / Miniature / Pop color / High-key / Low-key / Dynamic tone / Soft focus / Partial color (Red / Orange / Yellow / Green / Blue / Purple)
Other photography functions	Auto Red-eye Removal, Setting (Color, Sharpness, D-range, Gradation), Select custom setting, Motion panorama, Color space, Framing guideline, Frame No. memory, Histogram display, Preview depth of focus, Lens Modulation Optimizer, Pre-AF, Focus check, Focus Peak Highlight, Digital Split Image*3, Electronic level, Multiple exposure, Interval timer shooting, Release priority / Focus priority selection, Function button setting, (RAW, Movie, etc.), ISO AUTO control, Instant AF setting (AF-S/AF-C)
Playback functions	RAW conversion, Image rotate, Red-eye reduction, Photobook assist, Erase selected frames, Image search, Multi-frame playback (with micro thumbnail), Slide show, Mark for upload, Protect, Crop, Resize, Panorama, Favorites
Wireless transmitter	standard IEEE 802.11b/g/n (standard wireless protocol) access mode Infrastructure
Wireless function	Geotagging / Wireless communication (Image transfer) / View & Obtain Images / Remote camera shooting / PC Autosave
Other functions	PictBridge, Exif Print, Language selection, Time difference, High Performance mode, Silent mode
Terminal	Digital interface USB2.0 (High-Speed) / micro USB terminal *connectable with Remote Release RR-90 (sold separately) HD output HDMI mini connector (Type C) Others Microphone / shutter release input: Φ2.5mm, stereo mini connector
Power supply	NP-W126 Li-ion battery (included)
Dimensions	129.0mm(W)×89.8mm(H)×46.7mm(D) / 5.0in.(W)×3.5in.(H)×1.8in.(D) (Minimum depth: 33.4 mm / 1.3 in.)
Weight	Approx. 440g / 15.4oz. (including battery and memory card) Approx. 390g / 13.7oz. (excluding accessories, battery and memory card)
Operating Temperature	-10°C - +40°C
Operating Humidity	10 - 80% (no condensation)
Battery life for still images *4	approx 350 frames (When XF35mmF1.4 R is set, LCD monitor/viewfinder on, and supplied flash EF-X8 not attached)
Battery life for movies *4	Consecutive movie recording: Approx. 103min. (Face detection is set to OFF) *Individual movies cannot exceed approx. 14min on Full HD mode, and approx. 27min on HD mode in length.
Starting up period	Approx. 0.5sec., when High Performance mode set to ON Approx. 1.0sec., when High Performance mode set to OFF *FUJIFILM research
Accessories included	Li-ion Battery NP-W126 / Battery Charger BC-W126 / Shoe-mounted flash unit EF-X8 / Shoulder strap / Body cap / Metal strap clip / Protective cover / Clip attaching tool / Hot shoe cover / Tall-orientation battery grip connector cover / Sync terminal cover / CD-ROM (Viewer software, RAW File Converter etc. *5) / Owner's manual

\*1 Please see the Fujifilm website to check memory card compatibility.  
\*2 Exif 2.3 is a digital camera file format that contains a variety of shooting information for optimal printing.  
\*3 Digital Split Image™ is a trade mark or a registered trade mark of FUJIFILM Corporation.  
\*4 Approximate number of frames/period that can be taken with a fully-charged battery based on CIPA standard.  
\*5 OS compatibility  
Viewer software: Windows 8 / 7 / Vista / XP  
RAW File Converter: Windows 8 / 7 / Vista / XP, Mac OS X 10.6 - 10.8



## Free Manuals Download Website

<http://myh66.com>

<http://usermanuals.us>

<http://www.somanuals.com>

<http://www.4manuals.cc>

<http://www.manual-lib.com>

<http://www.404manual.com>

<http://www.luxmanual.com>

<http://aubethermostatmanual.com>

Golf course search by state

<http://golfingnear.com>

Email search by domain

<http://emailbydomain.com>

Auto manuals search

<http://auto.somanuals.com>

TV manuals search

<http://tv.somanuals.com>