

1U TFT-LCD 17" Multi-Interface Console Drawer

SERVIS™ DRAWER

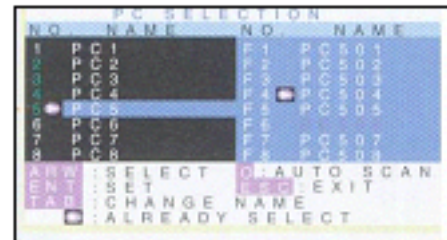
FD-1100MT Series

The SERVIS™ Drawer offers the latest, comfortable and efficient way to control server cabinets for Reliability, Availability, and Serviceability. The drawers new multi-support interface provide user with easy selection of input device interface.



■ FEATURES

- The model supports the following interfaces (PS/2, USB, SUN I/O and USB).
- A 17 inch 1280 x 1024 high resolution SXGA TFT color LCD monitor, a membrane switch keyboard and a touch pad with 3 buttons.
- Flat modular construction for 19 inch 1U rack mounting
The 1U drawer pulls out and the display raises up like a notebook computer in use. When not in use, the display folds down and latches closed and the 1U drawer pushes into cabinet easily and smoothly.
- Quick and easy installation.
Slide rails are NOT included, available in 3 optional configurations.
- Drawer comes with space to install the 4-port Multi-KVM, in the field.
- Optional built-in 8-, 16-port KVM drawer available (Server Drawer Multi)
 - I/F support: PS/2, USB, SUN I/O, USB
 - On Screen Display (OSD) function
In Hot Key Mode, the selection screen is displayed on the monitor. This display lets you assign names of PCs and select PCs using the cursor key.
 - Hot Key: any server is selected by the keyboard directly.
- Both separate-sync and composite sync video signals are supported



In use

486 (W) x 1215 (D) x 370 (H) mm



In cabinet

486 (W) x 685 (D) x 43(H) mm



Guide rails



LAMP(S) INSIDE THIS PRODUCT CONTAIN MERCURY AND MUST BE RECYCLED OR DISPOSED OF ACCORDING TO LOCAL, STATE OR FEDERAL LAWS.

FD-1100MT SERVIS Drawer

■ SPECIFICATIONS

Product Name / Model		SERVIS Drawer / FD-1100MT 17 " series		
Part Number		NC14010-B452/US*	NC14010-B462/US***	NC14010-B472/US****
19 inch rack space requirement		1U		
LCD drawer part	LCD display		17 inch SXGA TFT color LCD	
	LCD resolution		1280 x 1024	
	LCD supported video signal (H, V sync. signal)		Separate sync. / Composite sync.	
	Keyboard	# of keys	83 keys (US), (other languages: 84 keys (Europe), 87 keys (Japan))	
		I/F	Multi-interface**	PS/2: connected with KVM port
	Touch Pad	Type	Capacitive touch pad, 3 buttons	
I/F		Multi-interface**	PS/2: connected with KVM port	
KVM part	Supported PC/Server		-	Servers with PS/2, USB, Sun I/O and USB I/F
	Number of server connections (max. number in cascade connections)		-	8 units (64) 16 units (256)
	Selection method		-	Hot keys, OSD
	LED indicator	Power	-	8 16
		Select	-	8 16
	Console Port with interface	Keyboard	-	PS/2 Mini Din 6-pin (female) x1: not connected
		Mouse	-	PS/2 Mini Din 6-pin (female) x1: to be connected
		Monitor	-	Mini D-SUB 15P (female) x1: to be connected
	Supported interface for cascaded server	Keyboard	-	PS/2 keyboard compliant
		Mouse	-	PS/2 mouse compliant
		USB	-	USB 1.1 compliant
		Sun I/O	-	Sun keyboard / mouse compliant
	Server cascade port		-	Mini D-SUB 15P (female) x 8 Mini D-SUB 15P (female) x 16
OSD modes manual		-	Hot key mode / Auto scan mode	
Auto scan intervals		-	3 / 5 / 10 (default), 20 / 40 / 60 seconds	
General	Power supply		100 to 240VAC	
	Operating environment		15° -35° C / 10-80%RH	
	Dimension (main unit)		486 (w) x 685 (d) x 43 (h)mm in storage 486 (w) x 1215 (d) x 370 (h)mm in operation	
	Weight (main unit)		14kg	16kg 16kg
	Included accessories		User manual (x1), Power cable (x1)	

* 4-port KVM: NC14004-B042 can be installed inside drawer (separate purchase). 8/16-port KVM has to be factory installed.

** NC14010-B452/US Multi-interface supported by changing cable. 2.0m PS/2 & USB cables are included, SUN I/O cable sold separately.

*** with 8-port KVM

**** with 16-port KVM

FD-1100MT SERVIS Drawer

■ OPTIONAL ACCESSORIES

AC cable	AC Power cable	for 8-, 16-port KVM, all US drawer models*	NC14004-B074
	AC Adaptor cable	for 2-**, 4-port KVM, Cat5 Extender	NC14004-B077
Drawer I/F cables for NC14010- B452/US only	PC cable	(0.7m)	NC14000-B800/07)
		2.0m	NC14000-B800/20***
		(3.0m)	NC14000-B800/30)
	USB cable	(0.7m)	NC14000-B820/07)
		2.0m	NC14000-B820/20***
		(3.0m)	NC14000-B820/30)
	Sun I/O cable	(0.7m)	NC14000-B840/07)
		2.0m	NC14000-B840/20
		(3.0m)	NC14000-B840/30)
Interface cables for KVM built-in console drawers	PC cable	1.8m	NC14000-B602
		3.0m	NC14000-B603
		5.0m	NC14000-B605
	USB cable	1.8m	NC14000-B102
		3.0m	NC14000-B103
		5.0m	NC14000-B105
	Sun I/O cable	1.8m	NC14000-B202
		3.0m	NC14000-B203
		5.0m	NC14000-B205

Notes:

- * All US drawer models include AC power cable.
 - ** US 2-port KVM (ATL-models) includes AC adaptor cable
- Above P/N for AC cable is US model.
- Drawer I/F cables:
 - *** These 2 cables are attached to N014010-B452/US 17" drawer. I/F Sun I/O cables, are required, sold separately
 - Non-standard 0.7m and 3m cables are also available, please contact sales office for information.

Guide Rails	
Standard inside mounted guide rail	NC14003-T591
Outside mounted guide rail	NC14003-T592
Side mounted guide rail	NC14003-T593

FD-1100MT SERVIS Drawer

■ SERVIS Families

KVM			
Model/Series		Part Number	Description
SERVIS 2: FS-102ATL	2-port	NC14004-T256/US	FS-102ATL 2-port US version
SERVIS MULTI: FS-1004MT	4-port KVM	NC14004-B042	FS-1004MT 4-port multi KVM switch
SERVIS MULTI: FS-1008MT	8-port KVM	NC14004-B082	FS-1008MT 8-port multi KVM switch
SERVIS MULTI: FS-1016MT	16-port KVM	NC14004-B162	FS-1016MT 16-port multi KVM switch
DRAWER			
Model/Series		Part Number	Description
SERVIS LCD Drawer: FD-1000AT	Basic model	NC14004-B402/US	15" AT Console drawer, US version (LCD: XGA, Input Device I/F: PS/2)
	with built-in 8-port Multi-KVM	NC14004-B412/US	15" AT Console drawer, US version with 8-port multi-KVM pre-installed (LCD:XGA)
	with built-in 16-port Multi-KVM	NC14004-B422/US	15" AT Console drawer, US version with 16-port multi-KVM pre-installed (LCD: XGA)
SERVIS LCD Drawer: FD-1000MT	Basic model	NC14010-B452/US	17" Console drawer, US version (LCD: SXGA, Input Device multi-interface)
	with built-in 8-port Multi-KVM	NC14010-B462/US	17" Console drawer, US version with 8-port multi-KVM pre-installed (LCD: SXGA)
	with built-in 16-port Multi-KVM	NC14010-B472/US	17" Console drawer, US version with 16-port multi-KVM pre-installed (LCD: SXGA)
Cat5Extender			
Model/Series		Part Number	Description
Cat5 Basic series		NC14004-B713	200 m Cat5 Extender Kit of local and remote units (XGA:30-200m, SXGA:30-150m), remote unit to be console port only, support audio remote
Cat5 Wide Band: FE-1000CW		NC14004-B721/U	300 m Cat5 Extender Kit of local and remote units, remote unit to be console port only, compact size: 110 (W) x 100 (D) x 25 (H)mm
Cat5 Wide Band: FE-2000CW		NC14004-B717/U	300 m Cat5 Extender Kit of local and remote units , remote unit to be console port only, support audio and touchpanel (RS232: TxD, RxD only)

FD-1100MT SERVIS Drawer

Fujitsu Components International Headquarter Offices

Japan

Fujitsu Component Limited
Gotanda-Chuo Building
3-5, Higashigotanda 2-chome, Shinagawa-ku
Tokyo 141 8630, Japan
Tel: (81-3) 5449-7010
Fax: (81-3) 5449-2626
Email: promothq@fcl.fujitsu.com
Web: www.fcl.fujitsu.com

North and South America

Fujitsu Components America, Inc.
250 E. Caribbean Drive
Sunnyvale, CA 94089 U.S.A.
Tel: (1-408) 745-4900
Fax: (1-408) 745-4970
Email: components@us.fujitsu.com
Web: <http://www.fujitsu.com/us/services/edevice/components/>

Europe

Fujitsu Components Europe B.V.
Diamantlaan 25
2132 WV Hoofddorp
Netherlands
Tel: (31-23) 5560910
Fax: (31-23) 5560950
Email: info@fceu.fujitsu.com
Web: emea.fujitsu.com/components/

Asia Pacific

Fujitsu Components Asia Ltd.
102E Pasir Panjang Road
#01-01 Citilink Warehouse Complex
Singapore 118529
Tel: (65) 6375-8560
Fax: (65) 6273-3021
Email: fcsl@fcal.fujitsu.com
Web: <http://www.fujitsu.com/sg/services/micro/components/>

©2006 Fujitsu Components America, Inc. All rights reserved. All trademarks or registered trademarks are the property of their respective owners.

Fujitsu Components America or its affiliates do not warrant that the content of datasheet is error free. In a continuing effort to improve our products Fujitsu Components America, Inc. or its affiliates reserve the right to change specifications/datasheets without prior notice.
Rev. June13/2006

Free Manuals Download Website

<http://myh66.com>

<http://usermanuals.us>

<http://www.somanuals.com>

<http://www.4manuals.cc>

<http://www.manual-lib.com>

<http://www.404manual.com>

<http://www.luxmanual.com>

<http://aubethermostatmanual.com>

Golf course search by state

<http://golfingnear.com>

Email search by domain

<http://emailbydomain.com>

Auto manuals search

<http://auto.somanuals.com>

TV manuals search

<http://tv.somanuals.com>