



# Fujitsu LifeBook

## P Series

### **BIOS Guide**

LifeBook P Series Model:  
P5020/P5020D

Document Date: 10/15/03  
Document Part Number: FPC58-1031-01

---

FUJITSU COMPUTER SYSTEMS CORPORATION

---

# LifeBook P Series Notebook BIOS

## BIOS SETUP UTILITY

The BIOS Setup Utility is a program that sets up the operating environment for your notebook. Your BIOS is set at the factory for normal operating conditions, therefore there is no need to set or change the BIOS environment to operate your notebook.

The BIOS Setup Utility configures:

- Device control feature parameters, such as changing I/O addresses and boot devices.
- System Data Security feature parameters, such as passwords.

### Entering the BIOS Setup Utility

To enter the BIOS Setup Utility do the following:

1. Turn on or restart your notebook.
2. Press the [F2] key once the Fujitsu logo appears on the screen. This will open the main menu of the BIOS Setup Utility with the current settings displayed.
3. Press the arrow keys to scroll through the other setup menus to review or alter the current settings.

### Navigating Through The Setup Utility

The BIOS setup utility consists of six menus: Main, Advanced, Security, Boot, Info and Exit. This document explains each menu and all submenus and setup items.

The following procedures allow you to navigate the setup utility menus:

1. To select a menu, use the cursor keys: [ ← ], [ → ].
2. To select a field within a menu or a submenu, use the cursor keys: [ ↑ ], [ ↓ ].



- Selecting a field causes a help message about that field to be displayed on the right-hand side of the screen.
- Pressing [Enter] with the highlight on a selection that is not a submenu or auto selection will cause a list of all options for that item to be displayed. Pressing the Enter key again will select the highlighted choice.

3. To select the different values for each field, press the [Spacebar] or [+] to change to the next higher selection and [F5] or [-] to go to the next lower selection.

4. To activate a submenu press [Enter].
5. To return to a menu from a submenu, press [Esc].
6. To go to Exit menu from another menu, press [Esc].
7. Pressing the [F9] key resets all items in the BIOS to the default values.
8. Pressing the [F10] key saves the current configuration and exits the BIOS Setup Utility. You will be asked to verify this selection before it is executed.
9. Pressing the [F1] key gives you a general help screen.

### Entering the Setup Utility After a Configuration Change or System Failure

If there has been a change in system configuration that does not match the parameter settings stored in your BIOS memory, or there is a failure in the system, the system beeps and/or displays an error message after the Power On Self Test (POST). If the failure is not severe, it will give you the opportunity to modify the settings of the setup utility, as described in the following steps:

1. When you turn on or restart the computer there is a beep and/or the following message appears on the screen:  

```
Error message - please run SETUP
program Press <F1> key to continue,
<F2> to run SETUP
```
2. If an error message is displayed on the screen, and you want to continue with the boot process and start the operating system anyway, press the [F1] key.



If your settings require it, you may be asked for a password before the operating system will be loaded.

3. If an error message is displayed on the screen, and you want to enter the setup utility, press the [F2] key.
4. When the setup utility starts with a fault present, the system displays the following message:  

```
Warning!
Error message
[Continue]
```
5. Press any key to enter the setup utility. The system will then display the Main Menu with current parameters values.

## MAIN MENU - SETTING STANDARD SYSTEM PARAMETERS

The Main Menu allows you to set or view the current system parameters. Follow the instructions for Navigating Through the Setup Utility to make any changes.

The following tables show the names of the menu fields for the Main menu and its submenus, all of the options for each field, the default settings and a description of

the field's function and any special information needed to help understand the field's use.



System Time and System Date can also be set from your operating system without using the setup utility. Use the calendar and time icon on your Windows Control Panel.

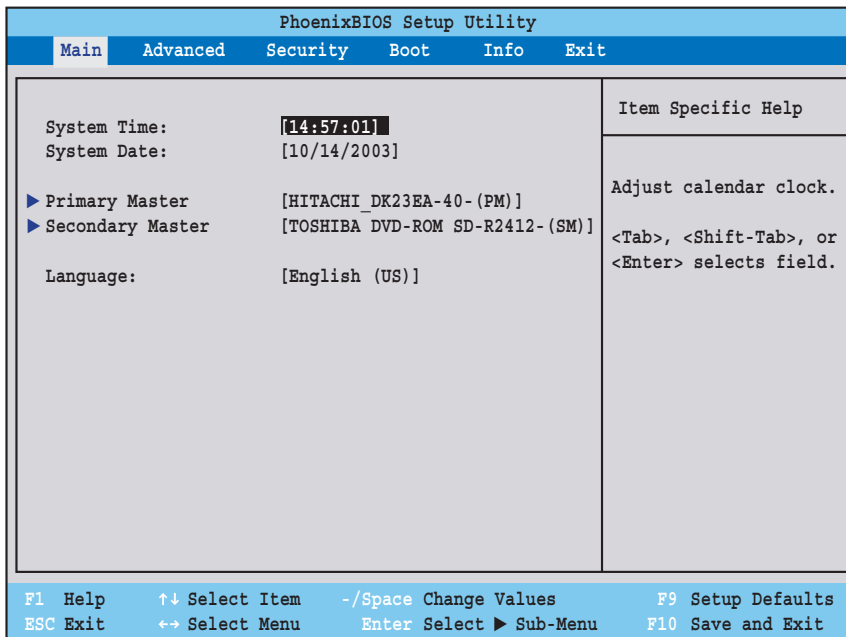


Figure 1. Main Menu

| Menu Field   | Options | Default | Description  |
|--------------|---------|---------|--|
| System Time: | —       | —       | Sets and displays the current time. Time is in a 24 hour format of hours:minutes:seconds with 2 digits for each. (HH:MM:SS). Example: 16:45:57. You may change each segment of the time separately. Move between the segments with the [Tab] key and/or [Shift] + [Tab] keys.                                  |
| System Date: | —       | —       | Sets and displays the current date. Date is in a month/day/year numeric format with 2 digits each for month and day and 4 digits for year. (MM/DD/YYYY) for example: 03/20/1998. You may change each segment of the date separately. Move between the segments with the [Tab] key and/or [Shift] + [Tab] keys. |

| Menu Field        | Options  | Default        | Description  |
|-------------------|--|----------------|--|
| Primary Master:   | Selects Primary Master submenu   | —              | Displays the type of device on this ATA/ATAPI interface, if there is one. Pressing the Enter key selects the Primary Master submenu allowing additional device configuration options for this interface.   |
| Secondary Master: | Selects Secondary Master submenu   | —              | Displays the type of device on this ATA/ATAPI interface, if there is one. Pressing the Enter key selects the Secondary Master submenu allowing additional device configuration options for this interface. |
| Language:         | <ul style="list-style-type: none"><li>• English (US)</li><li>• Japanese (JP)</li></ul> | [English (US)] | The default setting differs between the US/European and the Japanese model. Selects the display language for the BIOS.   |

## Primary Master Submenu of the Main Menu

The Primary Master submenu identifies which ATA devices are installed.

*Note: Actual hard drive label shown may vary. Depending on the drive type, information such as cylinders, heads and sectors may also be displayed.*

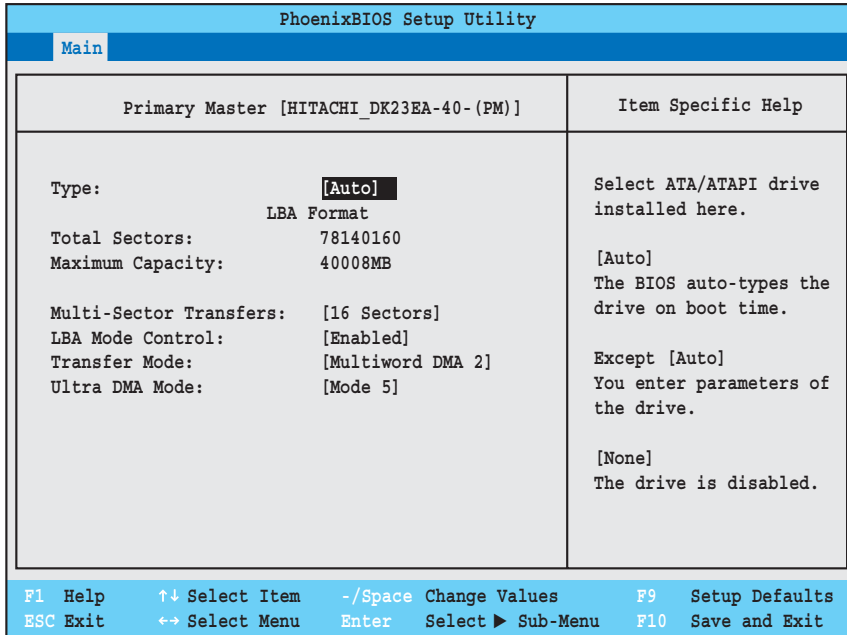


Figure 2. Primary Master Submenu

Table 2: Fields, Options and Defaults for the Primary Master Submenu of the Main Menu

| Menu Field        | Options   | Default                               | Description  |
|-------------------|---|---------------------------------------|--|
| Type:             | <ul style="list-style-type: none"> <li>▫ Auto</li> <li>▫ None</li> <li>▫ CD-ROM</li> <li>▫ Hard Disk</li> </ul> | [Auto]                                | Selects the ATA/ATAPI device type. Select Auto to have the type automatically identified by the BIOS at POST. If None is selected, all of the following Set-up items do not appear. Select CD-ROM if a CD-ROM drive is installed at this connection. If Hard Disk is selected, you must specify the number of Cylinders, Heads, and Sectors for the drive. |
| <b>LBA Format</b> |   | <b>Logical Block Addressing (LBA)</b> |  |
| Total Sectors:    | ---   | ---                                   | The total number of sectors on your hard disk  |
| Maximum Capacity: | ---   | ---                                   | The maximum capacity of your hard disk   |
| <b>CHS Format</b> |   | <b>Cylinders/Heads/Sectors</b>        |  |
| Cylinders:        | <ul style="list-style-type: none"> <li>▫ A number between 0 and 65,535</li> </ul>                               | —                                     | This item is active only when Hard Disk is selected as the type. This field is changed by incrementing (pressing the [Spacebar]), by typing in the number, or using the "+" and "-" keys.  |

**Table 2: Fields, Options and Defaults for the Primary Master Submenu of the Main Menu**

| Menu Field              | Options  | Default           | Description  |
|-------------------------|--|-------------------|--|
| Heads:                  | " A number between 1 and 16  | —                 | This item is active only when Hard Disk is selected as type. You can change the value by incrementing (pressing the [Spacebar]), by typing in the number, or using the "+" and "-" keys. |
| Sectors:                | " A number between 0 and 63  | —                 | This item is active only when Hard Disk is selected as type. You can change the value by incrementing (pressing the [Spacebar]), by typing in the number, or using the "+" and "-" keys. |
| Maximum Capacity:       | " Display only   | —                 | Displays the maximum capacity of the drive calculated from the parameters of the hard disk when Auto is selected and the type is identified as hard disk.                                |
| Multi-Sector Transfers: | " Disabled<br>" 2 Sectors<br>" 4 Sectors<br>" 8 Sectors<br>" 16 Sectors  | [16 Sectors]      | This option cannot be changed when Auto is selected. Specify the number of sectors per block for multiple sector transfer.   |
| LBA Mode Control:       | " Disabled<br>" Enabled  | [Enabled]         | Enables or disables logical Block Addressing in place of Cylinder, Head, Sector addressing. This option cannot be changed when Auto is selected.   |
| Transfer Mode:          | " Standard<br>" Fast PIO 1<br>" Fast PIO 2<br>" Fast PIO 3<br>" Fast PIO 4<br>" Multiword DMA 1<br>" Multiword DMA 2 | [Multiword DMA 2] | Selects the method for moving data to/from the drive. Autotype the drive to select the optimum transfer mode. This option cannot be changed when Auto is selected.                       |
| Ultra DMA Mode:         | " Disabled<br>" Mode 0<br>" Mode 1<br>" Mode 2<br>" Mode 3<br>" Mode 4<br>" Mode 5                                   | [Disabled]        | Selects the method for moving data to/from the drive. Autotype the drive to select the optimum transfer mode. This option cannot be changed when Auto is selected.                       |

## Secondary Master Submenu of the Main Menu

The Secondary Master submenu identifies which ATA devices are installed.

*Note: Actual drive label shown may vary. Depending on the drive type, information such as cylinders, heads and sectors may also be displayed.*

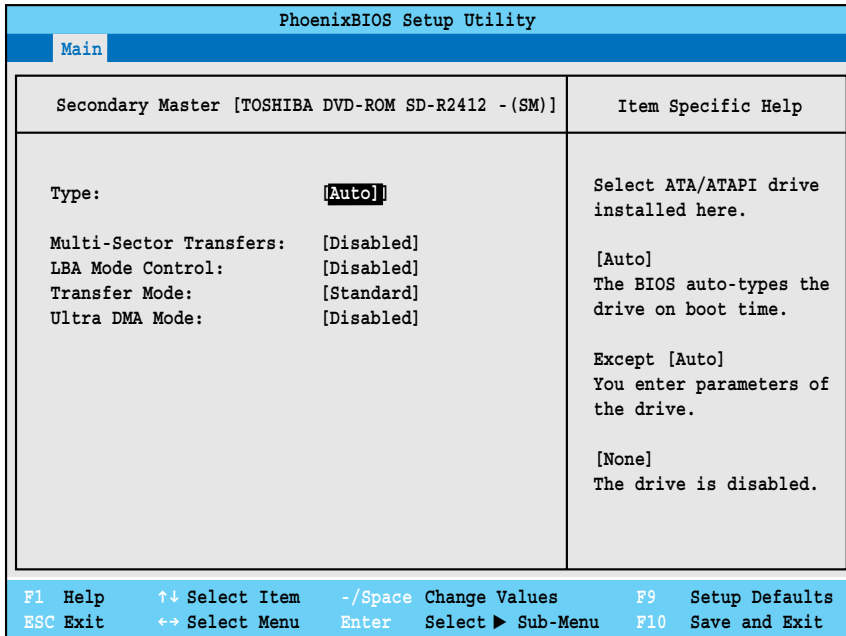


Figure 3. Secondary Master Submenu

Table 3: Fields, Options and Defaults for the Secondary Master Submenu of the Main Menu

| Menu Field | Options   | Default | Description  |
|------------|---|---------|--|
| Type:      | <ul style="list-style-type: none"> <li>• Auto</li> <li>• None</li> <li>• Hard Disk</li> <li>• CD-ROM</li> </ul> | [Auto]  | Selects the ATA/ATAPI device type. Select Auto to have the type automatically identified by the BIOS at POST. If None is selected, all of the following Set-up items do not appear. If Hard Disk is selected, you must specify the number of Cylinders, Heads, and Sectors for the drive. Select CD-ROM to select parameters for CD-ROM drive. |
| Cylinders: | <ul style="list-style-type: none"> <li>• A number between 0 and 65,535</li> </ul>                               | —       | This item appears only when the type is identified as Hard Disk. When Hard Disk is selected, you can change the value. This field is changed by incrementing (pressing the [Spacebar]) or by typing in the number.   |
| Heads:     | <ul style="list-style-type: none"> <li>• A number between 1 and 16</li> </ul>                                   | —       | This item appears only when the type is identified as Auto or Hard Disk. When Hard Disk is selected, you can change the value. This field is changed by incrementing (pressing the [Spacebar]) or by typing in the number.   |

**Table 3: Fields, Options and Defaults for the Secondary Master Submenu of the Main Menu**

| Menu Field              | Options  | Default    | Description  |
|-------------------------|--|------------|--|
| Sectors:                | <ul style="list-style-type: none"> <li>A number between 0 and 63</li> </ul>  | —          | This item appears only when the type is identified as Auto or Hard Disk. When Hard Disk is selected, you can change the value. This field is changed by incrementing (pressing the [Spacebar]) or by typing in the number.   |
| Maximum Capacity:       | <ul style="list-style-type: none"> <li>Display only</li> </ul>   | —          | Displays the maximum capacity of the drive calculated from the parameters of the hard disk when Hard Disk is selected.   |
| Multi-Sector Transfers: | <ul style="list-style-type: none"> <li>Disabled</li> <li>2 Sectors</li> <li>4 Sectors</li> <li>8 Sectors</li> <li>16 Sectors</li> </ul>  | [Disabled] | This option cannot be changed when Auto is selected. Specify the number of sectors per block for multiple sector transfer.   |
| LBA Mode Control:       | <ul style="list-style-type: none"> <li>Disabled</li> <li>Enabled</li> </ul>  | [Disabled] | Enables or disables logical Block Addressing in place of Cylinder, Head, Sector addressing. This option cannot be changed when Auto is selected.   |
| Transfer Mode:          | <ul style="list-style-type: none"> <li>Standard</li> <li>Fast PIO 1</li> <li>Fast PIO 2</li> <li>Fast PIO 3</li> <li>Fast PIO 4</li> <li>Multiword DMA 1</li> <li>Multiword DMA 2</li> </ul> | [Standard] | Selects the method for moving data to/from the drive. Autotype the drive to select the optimum transfer mode. This option cannot be changed when Auto is selected. Multi-word DMA is automatically set to mode 1 for Fast PIO 1, Fast PIO 2, Fast PIO 3, and set to mode 2 for Fast PIO 4 / DMA. |
| Ultra DMA Mode:         | <ul style="list-style-type: none"> <li>Disabled</li> <li>Mode 0</li> <li>Mode 1</li> <li>Mode 2</li> <li>Mode 3</li> <li>Mode 4</li> <li>Mode 5</li> </ul>                                   | [Disabled] | Selects the method for moving data to/from the drive. Autotype the drive to select the optimum transfer mode. This option cannot be changed when Auto is selected.   |

### Exiting from Main Menu

When you have finished setting the parameters on this menu, you can either exit from the setup utility, or move to another menu. If you wish to exit from the setup utility, press the [Esc] key or use the cursor keys to go to the Exit menu. If you wish to move to another menu, use the cursor keys.



## ADVANCED MENU - SETTING DEVICE FEATURE CONTROLS

The Advanced Menu allows you to:

- Select between the display panel and an external CRT display.
- Enable or disable compensation for your display.
- Configure CPU and USB features.
- Configure Miscellaneous features

Follow the instructions for Navigating Through the Setup Utility to make any changes.

The following tables show the names of the menu fields for the Advanced Menu and its submenus, all of the options for each field, the default settings and a description of the field's function and any special information needed to help understand the field's use.

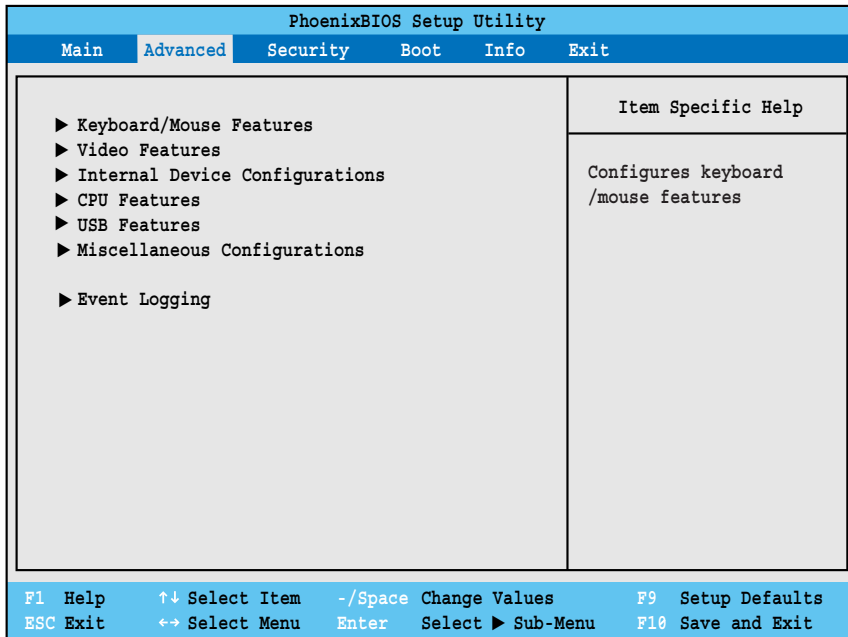


Figure 4. Advanced Menu

Table 4: Fields, Options and Defaults for the Advanced Menu

| Menu Field                     | Description  |
|--------------------------------|--|
| Keyboard/ Mouse Features       | When selected, opens the Keyboard/Mouse Features submenu, which allows setting NumLock.  |
| Video Features                 | When selected, opens the Video Features submenu, which allows setting of the display parameters, including routing of video signals to different displays. |
| Internal Device Configurations | When selected, opens the Internal Device Configurations submenu, which allows enabling or disabling the IDE, LAN, and modem controllers.                   |
| CPU Features                   | When selected, opens the CPU Features submenu, which allows configuration of CPU performance features.   |

**Table 4: Fields, Options and Defaults for the Advanced Menu**

| Menu Field                   | Description   |
|------------------------------|---|
| USB Features                 | When selected, opens the USB Features submenu, which allows enabling or disabling USB and SCSI Subclass support.                                  |
| Miscellaneous Configurations | When selected, opens the Miscellaneous Configurations submenu, which allows you to change the power button, Wake Up On LAN, and Volume settings.. |
| Event Logging                | When selected, opens the Event Logging submenu which lets you view and enable the event log.  |

### Keyboard/Mouse Features Submenu of the Advanced Menu

The Keyboard/Mouse Features submenu is for setting the condition of the NumLock button.

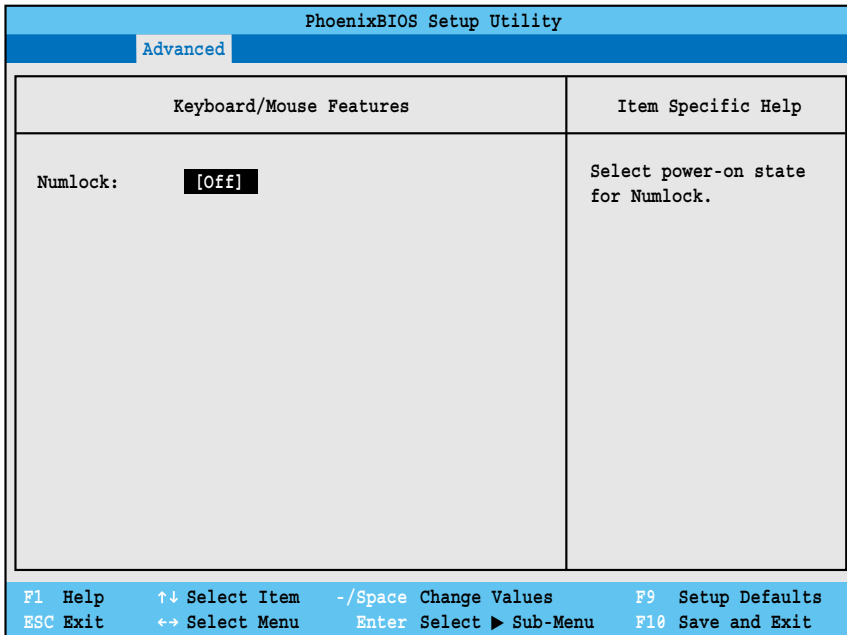


Figure 5. Keyboard/Mouse Features Submenu

Table 5: Fields, Options and Defaults for the Keyboard/Mouse Features Submenu of the Advanced Menu

| Menu Field | Options   | Default | Description  |
|------------|---|---------|--|
| Numlock:   | <ul style="list-style-type: none"> <li>• On</li> <li>• Off</li> <li>• On/Padlock Off</li> </ul> | [Off]   | Sets the NumLock function state when the computer completes booting. |

## Video Features Submenu of the Advanced Menu

The Video Features Submenu is for setting the display parameters.

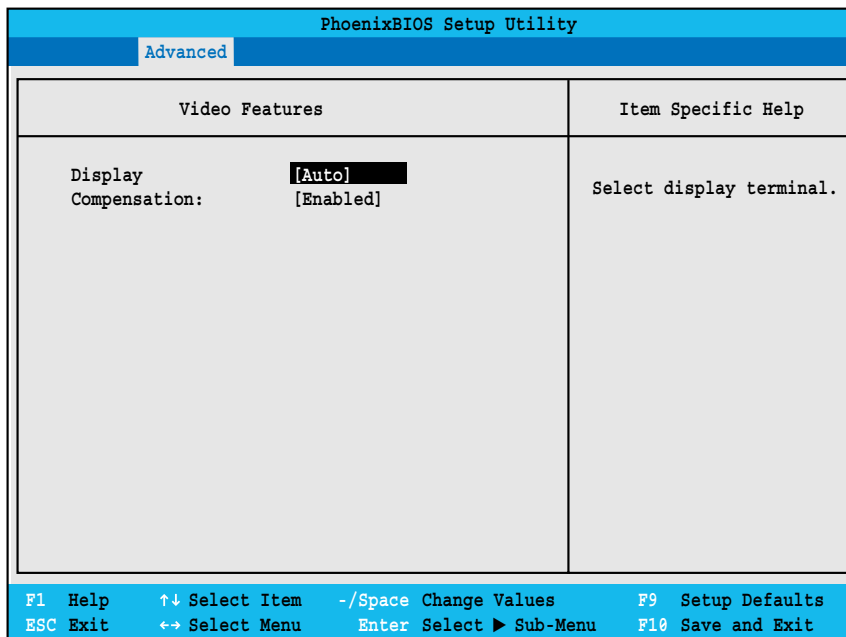


Figure 6. Video Features Submenu

Table 6: Fields, Options and Defaults for the Video Features Submenu of the Advanced Menu

| Menu Field    | Options   | Default   | Description  |
|---------------|---|-----------|--|
| Display:      | <ul style="list-style-type: none"> <li>Internal Flat-Panel</li> <li>External</li> <li>Auto</li> </ul> | [Auto]    | Selects where the video signal will be routed.   |
| Compensation: | <ul style="list-style-type: none"> <li>Disabled</li> <li>Enabled</li> </ul>                           | [Enabled] | Enables or disables compensation which controls spacing on the display. When enabled, displays with less than pixel resolution 800 x 600 will still cover the entire screen. |

## Internal Device Configurations Submenu of the Advanced Menu

The Internal Device Configurations submenu allows the user to configure other internal devices.

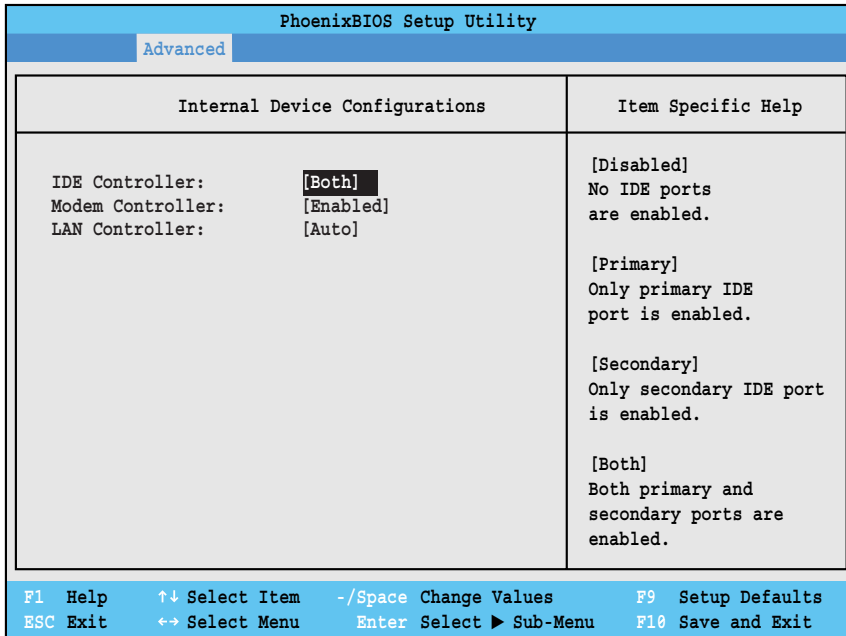


Figure 7. Internal Device Configurations Submenu

Table 7: Fields, Options and Defaults for the Internal Device Configurations Submenu of Advanced Menu

| Menu Field        | Options  | Default   | Description  |
|-------------------|--|-----------|--|
| IDE Controller:   | <ul style="list-style-type: none"> <li>• Disabled</li> <li>• Primary</li> <li>• Secondary</li> <li>• Both</li> </ul> | [Both]    | Enables or disables selected IDE devices.  |
| Modem Controller: | <ul style="list-style-type: none"> <li>• Disabled</li> <li>• Enabled</li> </ul>                                      | [Enabled] | Enables or disables the modem device.  |
| LAN Controller:   | <ul style="list-style-type: none"> <li>• Disabled</li> <li>• Enabled</li> <li>• Auto</li> </ul>                      | [Auto]    | Enables or disables LAN controller. When Auto is selected, the LAN device is always enabled when AC power is applied; when running on battery power, the device is enabled only when the link is active. |

### CPU Features Submenu of the Advanced Menu

The CPU Features submenu configures certain features of the CPU in the system.

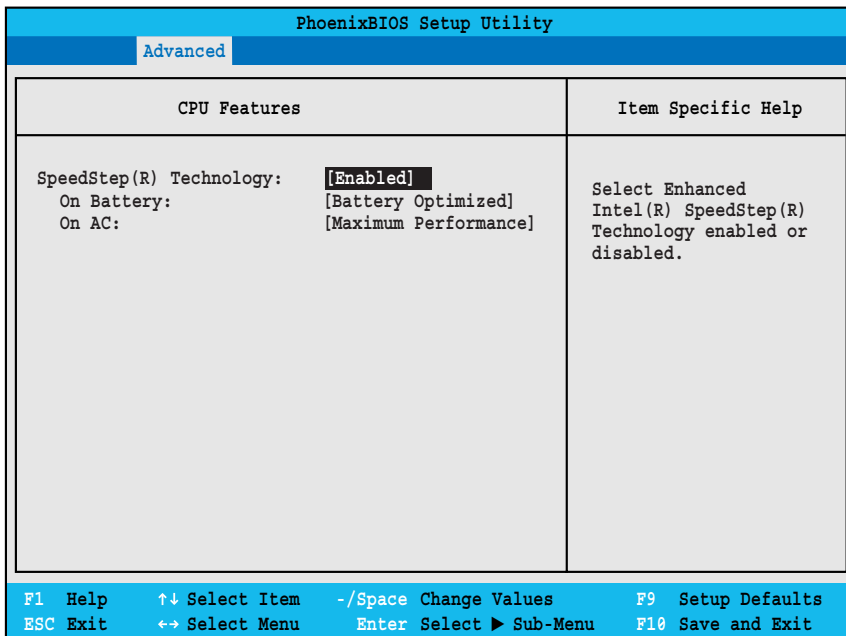


Figure 8. CPU Features Submenu

Table 8: Fields, Options and Defaults for the CPU Features Submenu of the Advanced Menu

| Menu Field               | Options   | Default               | Description   |
|--------------------------|---|-----------------------|---|
| SpeedStep(R) Technology: | <ul style="list-style-type: none"> <li>▫ Disabled</li> <li>▫ Enabled</li> </ul>   | [Enabled]             | Enables or disables SpeedStep(R) Technology.  |
| On Battery:              | <ul style="list-style-type: none"> <li>▫ Maximum Performance</li> <li>▫ Battery Optimized</li> <li>▫ Automatic</li> </ul> | [Battery Optimized]   | Allows the user to select the power conditions when the system is running on battery power. |
| On AC:                   | <ul style="list-style-type: none"> <li>▫ Maximum Performance</li> <li>▫ Battery Optimized</li> <li>▫ Automatic</li> </ul> | [Maximum Performance] | Allows the user to select the power conditions when the system is running on AC power.      |

## USB Features Submenu of the Advanced Menu

The USB Features submenu configures the USB capabilities of the system.

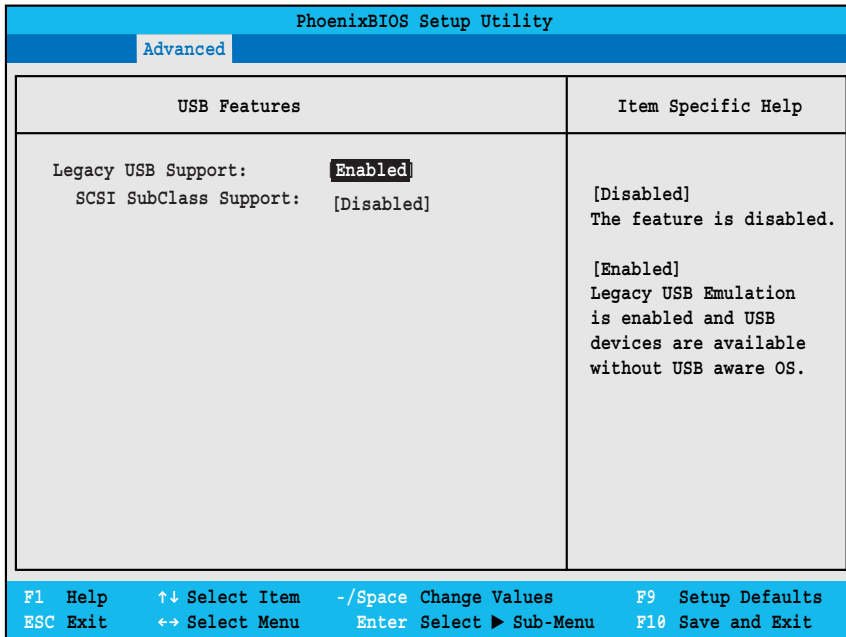


Figure 9. USB Features Submenu

Table 9: Fields, Options and Defaults for the USB Features Submenu of the Advanced Menu

| Menu Field             | Options   | Default    | Description   |
|------------------------|---|------------|---|
| Legacy USB Support:    | <ul style="list-style-type: none"> <li>▫ Disabled</li> <li>▫ Enabled</li> </ul> | [Enabled]  | When Disabled is selected, legacy USB emulation is disabled. When Enabled is selected, legacy USB emulation is enabled and USB devices are available without USB-aware OS.  |
| SCSI SubClass Support: | <ul style="list-style-type: none"> <li>▫ Disabled</li> <li>▫ Enabled</li> </ul> | [Disabled] | When Enabled is selected, USB devices that belong to the SCSI subclass in the mass storage class (e.g., USB Memory Key) are enabled. Note that enabling this feature may cause the system to hang during POST, depending on the device that is connected. |

## Miscellaneous Configurations Submenu of the Advanced Menu

The CPU Features submenu configures certain features of the CPU in the system.

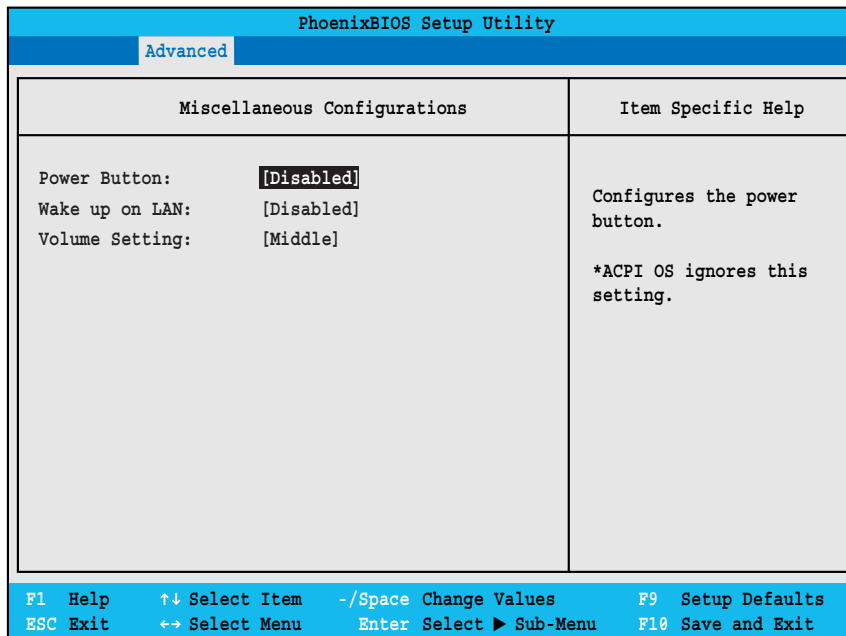


Figure 10. Miscellaneous Configurations Submenu

Table 10: Fields, Options and Defaults for the Miscellaneous Configurations Submenu

| Menu Field      | Options   | Default    | Description  |
|-----------------|---|------------|--|
| Power Button:   | <ul style="list-style-type: none"> <li>Disabled</li> <li>Power Off</li> </ul>                           | [Disabled] | When Disabled is selected, pressing the power button does not affect power. When Enabled is selected, pressing the button powers off the system. |
| Wake up on LAN: | <ul style="list-style-type: none"> <li>Disabled</li> <li>Enabled</li> </ul>                             | [Disabled] | When Enabled is selected, the system will wake up when the internal LAN receives a Magic Packet while it is powered off.                         |
| Volume Setting: | <ul style="list-style-type: none"> <li>Off</li> <li>Minimum</li> <li>Middle</li> <li>Maximum</li> </ul> | [Middle]   | Allows you to set or disable the system volume level.  |



## Event Logging Submenu of the Advanced Menu

The Event Logging submenu is for setting up the logs for DMI event logging.

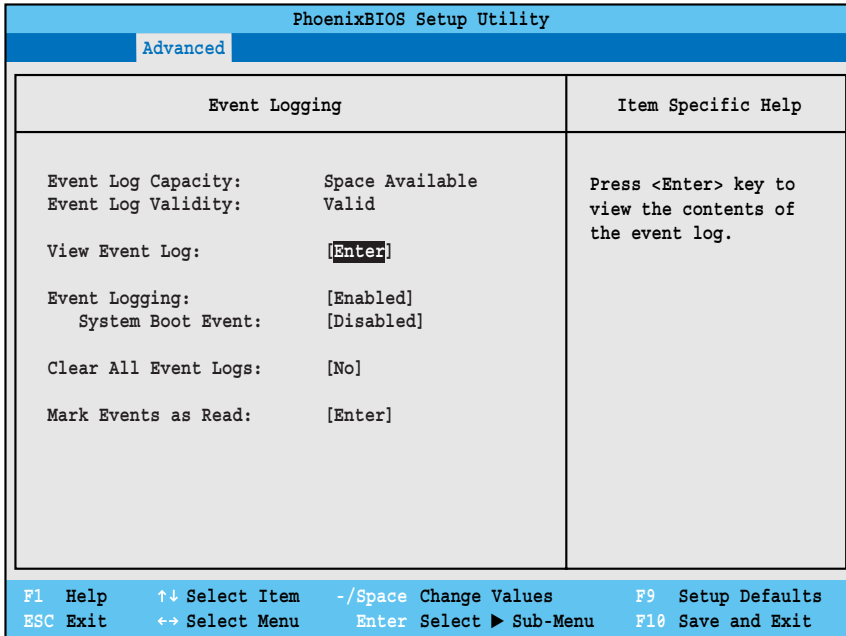


Figure 11. Event Logging Submenu

Table 11: Fields, Options and Defaults for the Event Logging Submenu of the Advanced Menu

| Menu Field            | Options                 | Default         | Description  |
|-----------------------|-------------------------|-----------------|--|
| Event Log Capacity:   |                         | Space Available | Display only   |
| Event Log Validity:   |                         | Valid           | Display only   |
| View Event Log:       | • Enter                 | [Enter]         | Allows you to view content of event log.                       |
| Event Logging:        | • Disabled<br>• Enabled | [Enabled]       | Turns event logging on and off for all DMI events.             |
| System Boot Event:    | • Disabled<br>• Enabled | [Disabled]      | Turns event logging on and off for DMI system boot events.     |
| Clear All Event Logs: | • No<br>• Yes           | [No]            | When set to [Yes] all event logs will be cleared at next boot. |
| Mark Events as Read:  | • Enter                 | [Enter]         | Allows you to mark events currently in the event log as read.  |

## SECURITY MENU - SETTING THE SECURITY FEATURES

The Security menu allows you to set up the data security features of your notebook to fit your operating needs and to view the current data security configuration. Follow the instructions for Navigating Through the Setup Utility to make any changes.

The following tables show the names of the menu fields for the Security menu and its submenus, all the options for each field, the default settings and a description of the field's function and any special information needed to help understand the field's use. The default condition is no passwords required and no write protection.



If you set a password, write it down and keep it in a safe place. If you forget the password you will have to contact your support representative to regain access to your secured functions and data.



- If you make an error when re-entering the password a [Warning] will be displayed on the screen. To try again, press the **Enter** key and then retype the password. Press the **Esc** key to abort the password setting process.
- Entering a password incorrectly three times in a row will cause the keyboard and mouse to be locked out and the warning [System Disabled] to be displayed. If this happens, restart the computer by turning off and on the power with the power switch and use the correct password on reboot.
- If the Password on Resume is Enabled and the Password on Boot is Disabled you will not have to type your password upon resuming the system from the Suspend or Save-to-Disk modes. Power Management Security will work only if Password on Boot is enabled.

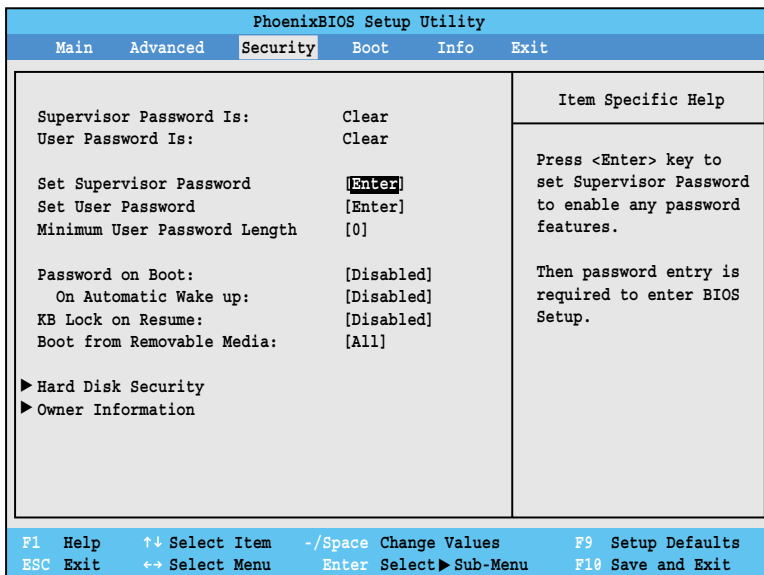


Figure 12. Security Menu

Table 12: Fields, Options and Defaults for the Security Menu

| Menu Field                    | Options  | Default    | Description   |
|-------------------------------|--|------------|---|
| Supervisor Password is:       | —  | Clear      | A display-only field. Set is displayed when the system supervisor password is set and Clear when it is not.   |
| User Password is:             | —  | Clear      | A display-only field. Set is displayed when the general user password is set, and Clear when it is not.   |
| Set Supervisor Password       | —  | [Enter]    | Sets, changes or cancels the Supervisor Password. The Supervisor Password may be up to seven characters long and must include only letters or numbers (no symbols). Passwords are NOT case-sensitive. To cancel a password press the <b>Enter</b> key instead of entering characters in the Enter New Password field and in the Re-enter New Password field. When a Supervisor Password is set it must be used to access the BIOS setup utility.                |
| Set User Password             | —  | [Enter]    | <b>Can only be accessed if Supervisor Password is set.</b> Sets, changes or cancels User Password. User Password may be up to seven characters long and must include only letters or numbers (no symbols). Passwords are NOT case-sensitive. To cancel a password press the <b>Enter</b> key instead of entering characters in the Enter New Password and Re-enter New Password fields. When a User Password is set it must be used to access the BIOS utility. |
| Minimum User Password Length: | —  | [0]        | —   |
| Password on Boot:             | <ul style="list-style-type: none"> <li>• Disabled</li> <li>• First Boot</li> <li>• Every Boot</li> </ul> | [Disabled] | When set to Disabled, no password is required. When set to First Boot, password entry required only before first boot. When Every Boot is selected, password required whenever the system is booted.  |
| KB Lock on Resume:            | <ul style="list-style-type: none"> <li>• Disabled</li> <li>• Enabled</li> </ul>                          | [Disabled] | When Enabled, PS/2 keyboard or mouse inputs are locked out at Resume From Suspend or Save-to-Disk until entering password.  |
| Boot from Removable Media:    | <ul style="list-style-type: none"> <li>• All</li> <li>• Supervisor only</li> </ul>                       | [All]      | When Supervisor Only is selected, only the Supervisor can boot from removable media. Only the user who enters the Supervisor Password before OS boot is treated as the Supervisor. When All is selected, boot from removable media is not restricted.   |
| Hard Disk Security:           | —  | —          | Configures hard disk security features.   |
| Owner Information:            | —  | —          | Sets Owner information.   |

### Exiting from the Security Menu

When you have finished setting the parameters on the Security Menu, you can either exit from setup utility or move to another menu. If you wish to exit from setup utility, press the [Esc] key to go to the Exit Menu. If you wish to move to another menu, use the cursor keys.

## Hard Disk Security Submenu of the Security Menu

The Hard Disk Security submenu is for configuring hard disk security features.

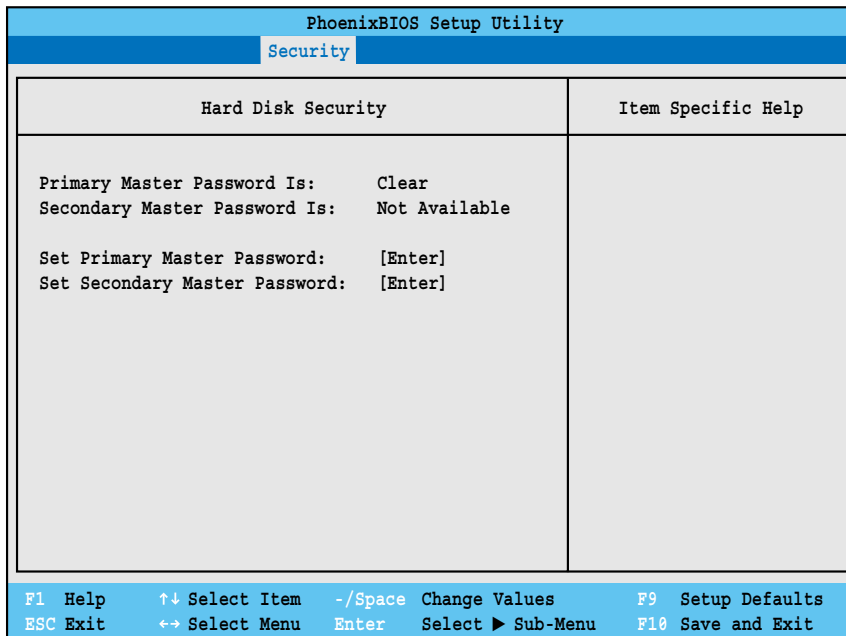


Figure 13. Hard Disk Security Submenu

Table 13: Fields, Options and Defaults for the Hard Disk Security Submenu of the Security Menu

| Menu Field                    | Default | Description  |
|-------------------------------|---------|--|
| Primary Master Password Is:   | ---     | A display-only field. Set is displayed when the Master Password is set and Clear when it is not.   |
| Secondary Master Password Is: | ---     | A display-only field. Not Available is displayed.  |
| Set Primary Master Password   | [Enter] | Sets, changes or cancels Primary Master Password. The Primary Master Password may be up to seven characters long and include only letters or numbers (no symbols). Passwords are NOT case-sensitive. To cancel a password press the Enter key instead of entering characters in the Enter New Password field and in the Re-enter New Password field. When a Primary Master Password is set it must be used to access the hard disk. Data on the hard disk cannot be read on other systems. |
| Set Secondary Master Password | [Enter] | Not currently available.   |

### Owner Information Submenu of the Security Menu

The Owner Information submenu is for setting owner information.

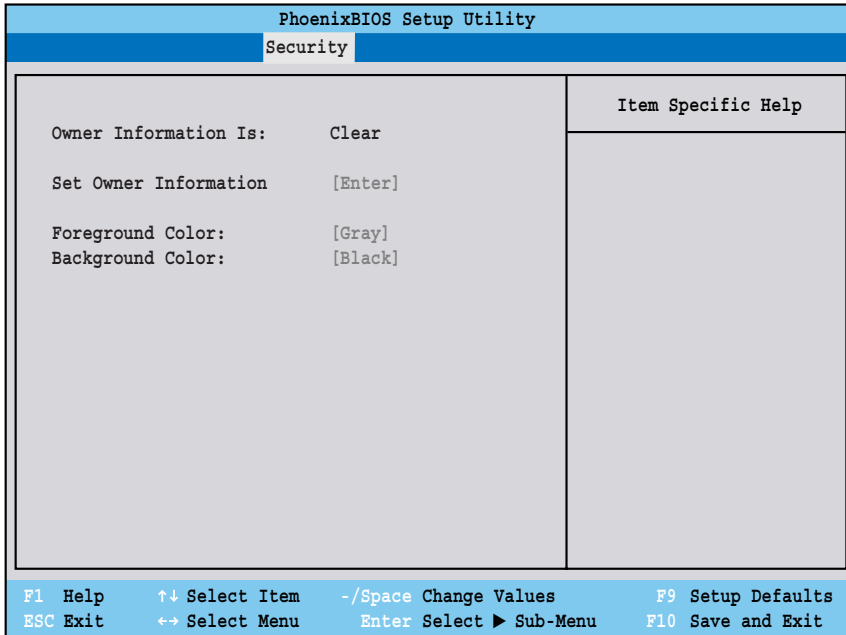


Figure 14. Owner Information Submenu

Table 14: Fields, Options and Defaults for the Owner Information Submenu of the Security Menu

| Menu Field             | Options   | Default | Description   |
|------------------------|---|---------|---|
| Owner Information Is:  | —   | Clear   | Display only. (Will only be displayed if the Supervisor Password is set). |
| Set Owner Information: | —   | [Enter] | Field to write owner information, i.e. name.                              |
| Foreground Color:      | <ul style="list-style-type: none"> <li>• Black</li> <li>• Blue</li> <li>• Green</li> <li>• Cyan</li> <li>• Red</li> <li>• Magenta</li> <li>• Brown</li> <li>• White</li> <li>• Gray</li> <li>• Light Blue</li> <li>• Light Green</li> <li>• Light Cyan</li> <li>• Light Red</li> <li>• Light Magenta</li> <li>• Light Yellow</li> <li>• Bright White</li> </ul> | [Gray]  |   |

**Table 14: Fields, Options and Defaults for the Owner Information Submenu of the Security Menu**

| Menu Field        | Options  | Default   | Description  |         |  |
|-------------------|--|---|--|---------|--|
| Background Color: | <ul style="list-style-type: none"> <li>• Black</li> <li>• Blue</li> <li>• Green</li> <li>• Cyan</li> <li>• Red</li> <li>• Magenta</li> </ul> | <ul style="list-style-type: none"> <li>• Brown</li> <li>• White</li> <li>• Gray</li> <li>• Light Blue</li> <li>• Light Green</li> </ul> | <ul style="list-style-type: none"> <li>• Light Cyan</li> <li>• Light Red</li> <li>• Light Magenta</li> <li>• Light Yellow</li> <li>• Bright White</li> </ul> | [Black] |  |

## BOOT MENU - SELECTING THE OPERATING SYSTEM SOURCE

The Boot Menu is used to select the order in which the BIOS searches sources for the operating system. Follow the instructions for Navigating Through the Setup Utility to make any changes. The tables show the names of the menu fields for the Boot menu and its submenu, all of the options for each field, the default settings and a description of the field's function and any special information needed to help understand the field's use.

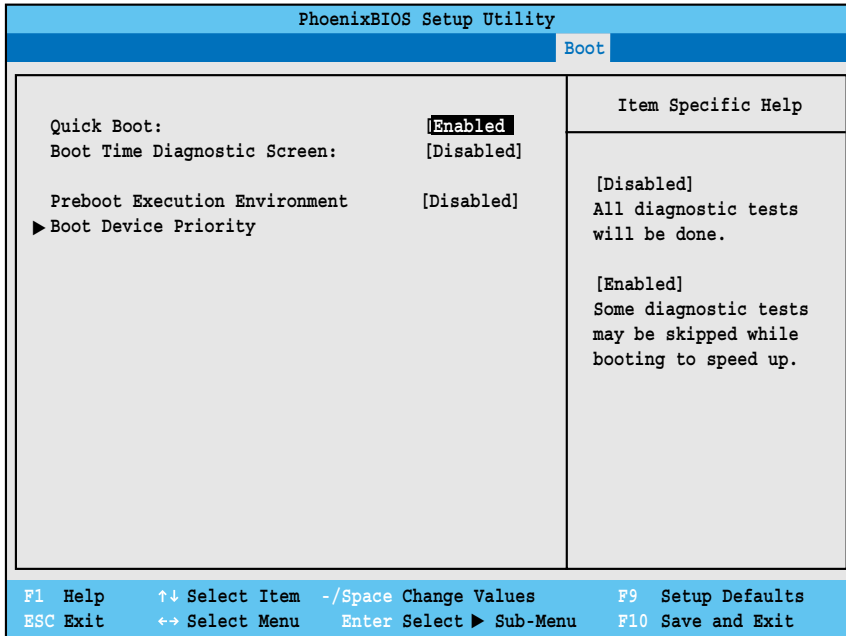


Figure 15. Boot Menu

Table 15: Fields, Options and Defaults for the Boot Menu

| Menu Field                    | Options  | Default    | Description   |
|-------------------------------|--|------------|---|
| QuickBoot:                    | <ul style="list-style-type: none"> <li>• Disabled</li> <li>• Enabled</li> </ul>          | [Enabled]  | Turns on and off booting with a truncated set of Power On Self Test. (Fewer tests mean faster turn on.) |
| Boot-time Diagnostic Screen:  | <ul style="list-style-type: none"> <li>• Disabled</li> <li>• Enabled</li> </ul>          | [Disabled] | Turns on and off display of test results instead of Fujitsu logo screen during Power On Self Test.      |
| Preboot Execution Environment | <ul style="list-style-type: none"> <li>• Disabled</li> <li>• Enabled</li> </ul>          | [Disabled] | Turns off and on the preboot execution environment feature.   |
| Boot Device Priority          | <ul style="list-style-type: none"> <li>• Selects Boot Device Priority submenu</li> </ul> | —          | This menu allows setting up the source for the operating system.  |

## Boot Device Priority Submenu of the Boot Menu

The Boot Device Priority submenu is for setting the order of checking of sources for the operating system.

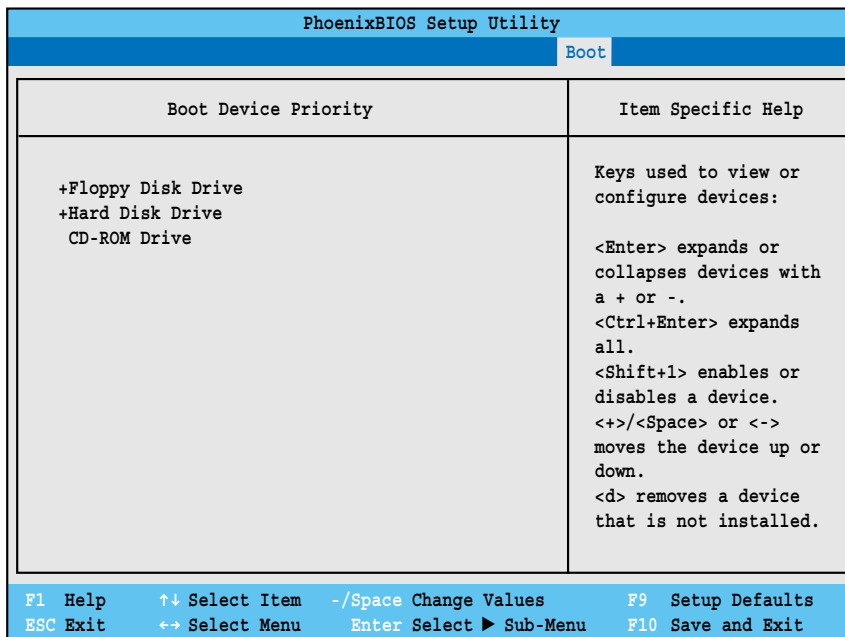


Figure 16. Boot Device Priority Submenu

Table 16: Fields, Options and Defaults for the Boot Device Priority Submenu of the Boot Menu

| Menu Field        | Options | Description  |
|-------------------|---------|--|
| Floppy Disk Drive | —       | The boot selections determine the order in which the BIOS searches for the operating system during a startup sequence. To change the order highlight one source by using the [up] or [down] cursor keys and then press the [+] or [-] key to change the order number for that source. Be sure to save your changed order when you exit the BIOS setup utility. |
| Hard Disk Drive   | —       |  |
| CD-ROM Drive      | —       |  |

## Exiting from Boot Menu

When you have finished setting the boot parameters with the Boot menu, you can either exit from the setup utility or move to another menu. If you wish to exit from the setup utility press the [Esc] key to go to the Exit menu. If you wish to move to another menu, use the cursor keys.



## INFO MENU - DISPLAYS BASIC SYSTEM INFORMATION

The Info menu is a display-only screen that provides the configuration information for your notebook.

The following table shows the names of the menu fields for the Info menu and the information displayed in those fields. These fields are for information purposes only, and are not editable.



The information displayed on this screen is variable according to the unit you purchased.

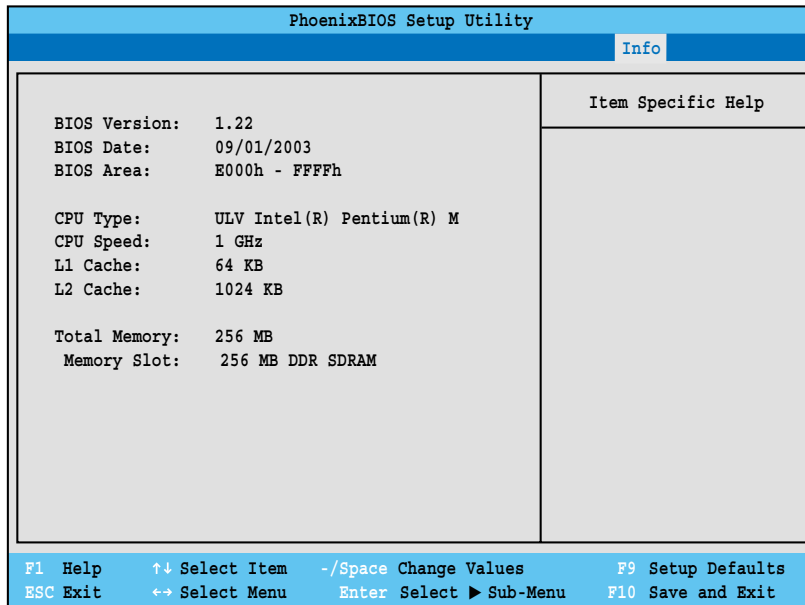


Figure 17. Info Menu

Table 17: Fields, Options and Defaults for the Info Menu

| Menu Field    | Default                   | Menu Field    | Default          |
|---------------|---------------------------|---------------|------------------|
| BIOS Version: | 1.xx                      | L1 Cache:     | 64 KB            |
| BIOS Date:    | mm/dd/yyyy                | L2 Cache:     | 1024 KB          |
| BIOS Area:    | E000h – FFFFh             | Total Memory: | 256 MB           |
| CPU Type:     | ULV Intel(R) Pentium(R) M | Memory Slot:  | 256 MB DDR SDRAM |
| CPU Speed:    | 1 GHz                     |               |                  |

## EXIT MENU - LEAVING THE SETUP UTILITY

The Exit Menu is used to leave the setup utility. Follow the instructions for Navigating Through The Setup Utility to make any changes. The table shows the names of the menu fields for the Exit menu and a description of the field's function and any special information needed to help understand the field's use.

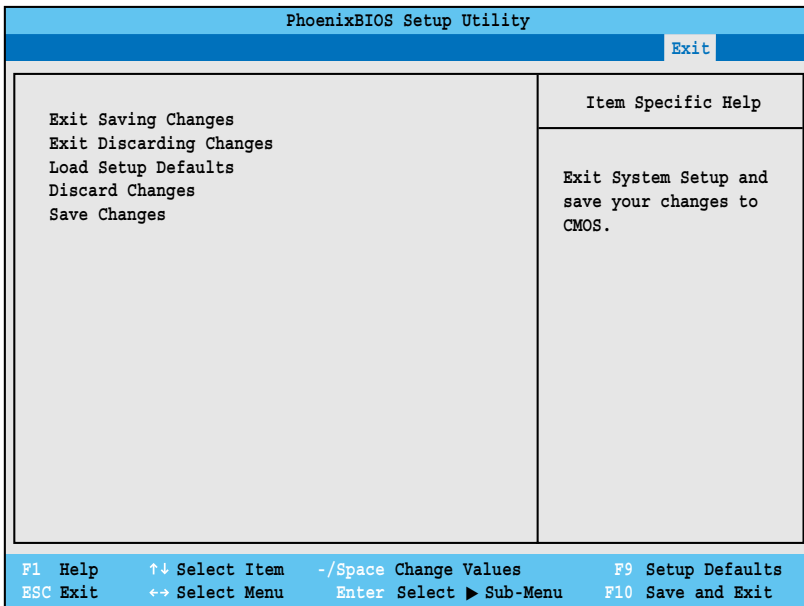


Figure 18. Exit Menu

Table 18: Fields, Options and Defaults for the Exit Menu

| Menu Field              | Shortcut          | Description   |
|-------------------------|-------------------|---|
| Exit Saving Changes     | Press the F10 key | Exit Saving Changes and Exit will store all the entries on every menu of the setup utility to the BIOS memory and then exit the setup utility. A confirmation message <code>Save Configuration changes and exit now? [Yes] [No]</code> will be displayed.   |
| Exit Discarding Changes | —                 | Selecting Exit Discarding Changes and Exit will exit the setup utility with out writing to the BIOS memory. When the BIOS recognizes this selection it will load the operating system and begin operation.  |
| Load Setup Defaults     | Press the F9 key  | Selecting Load Setup Defaults will load the factory preset default values for all menu fields, then display the message <code>Load default configuration now? [Yes] [No]</code> . When confirmed the setup utility will return to the Exit Menu. To return to another menu follow the directions in the Navigating Through The Setup Utility section. |

**Table 18: Fields, Options and Defaults for the Exit Menu**

| Menu Field      | Shortcut | Description   |
|-----------------|----------|---|
| Discard Changes | —        | Selecting Discard Changes will load the previous values in BIOS memory for all menu fields. The message <code>Load previous now? [Yes] [No]</code> will be displayed. When confirmed the setup utility will return to the Exit menu. To return to another menu, follow the directions in the <i>Navigating Through The Setup Utility</i> section.                     |
| Save Changes    | —        | Selecting Save Changes will cause the new settings in all menus to be written to the BIOS memory. The message <code>Save configuration changes now? [Yes] [No]</code> will be displayed. When confirmed, the setup utility will return to the Exit menu. To return to another menu, follow the directions in the <i>Navigating Through The Setup Utility</i> section. |

## Free Manuals Download Website

<http://myh66.com>

<http://usermanuals.us>

<http://www.somanuals.com>

<http://www.4manuals.cc>

<http://www.manual-lib.com>

<http://www.404manual.com>

<http://www.luxmanual.com>

<http://aubethermostatmanual.com>

Golf course search by state

<http://golfingnear.com>

Email search by domain

<http://emailbydomain.com>

Auto manuals search

<http://auto.somanuals.com>

TV manuals search

<http://tv.somanuals.com>