

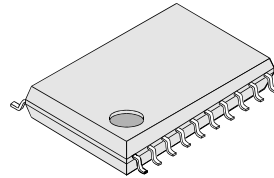
MB15F8xUL Series

Fractional-N / Integer dual PLL Frequency Synthesizers

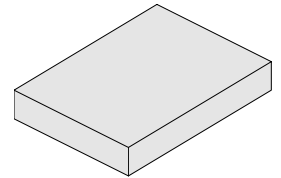
DESCRIPTION

The Fujitsu MB15F8xUL series dual PLLs are serial input Frequency synthesizers. The Fractional-N PLL operates up to 2.6 GHz and the integer PLL operates up to 1200 MHz. They have built-in dual-modulus prescalers enabling pulse swallow operation and fixed or selectable fractional modulo. The latest advanced BiCMOS technology is used resulting in a super low supply current. A refined charge pump design (Fujitsu's Super Charger) provides fast tuning along with low spurious noise and phase noise characteristics. The MB15F8xUL series is ideally suited for digital mobile communications, including GSM, DCS1800, PCS1900, IS-136, IS-95 and ISM applications.

Packages



20-pin, Plastic TSSOP
FPT-20P-M06



20-pad, Plastic BCC
LCC-20P-M05

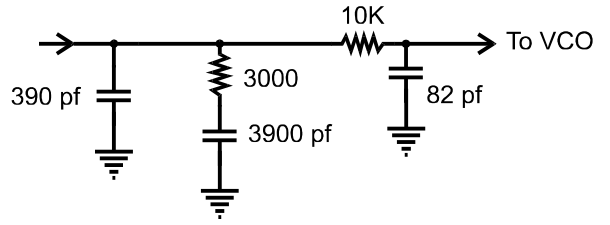
FEATURES

- Fractional-N RF PLL and Integer IF PLL
- Very low spurious and phase noise characteristics
- Low operating voltage: 2.4 to 3.6 volts
- Low operating current: 5.8 to 6 mA (typical)
- Power-saving current: 0.1µA (typical)
- Wide operating temperature: -40 to +85°C
- New 30% smaller BCC 20 package
- Plastic 20-pin TSSOP
- Selectable charge pump current (± 1.5 or ± 6.0 mA)
- Evaluation Kits available

Parameter	MB15F83UL	MB15F86UL	MB15F88UL
RF/RX Frequency - max.	2 GHz	2.5 GHz	2.6 GHz
IF/TX Frequency - max	600 MHz	600 MHz	1.2 GHz
Low Power Supply Voltage	2.7V	2.7V	2.7V
Low Power Supply Current	5.8 Ma	5.8 mA	6.0 mA
Prescaler Divide Ratios	RF = 16/17 IF = 8/9 OR 16/17	RF = 16/17 or 32/33 IF = 8/9 or 16/17	Rx = 32/33 Tx = 16/17 or 32/33
Reference Divider	RF = 3 to 127 IF = 3 to 16383	RF = 3 to 255 IF = 3 to 16383	RF = 8 to 16383 IF = 8 to 16383
Fractional Function	RF = modulo 13 fixed	RF = modulo 3 to 16	RF = modulo 5 or 8
Fractional Counter	RF = 0 to 15	RF = 0 to 15	RF = 0 to 15
Swallow Counter	RF = 0 to 31 IF = 0 to 15	RF = 0 to 31 IF = 0 to 31	RX = 0 to 31 TX = 0 to 31
Programmable Counter	RF = 18 to 1,023 IF = 3 to 2,027	RF = 18 to 1,023 IF = 3 to 2,027	RF = 34 to 1,023 TX = 3 to 2,027
Power Saving Function		0.1µA typ.	

Reference Information: MB15F83UL

Frequencies: 1733 to 1803 MHz
 Step Size: 200 kHz
 Hop Time: Less than 2 μ s
 Charge Pump: 6.0 mA
 VCO Sens: 44 MHz/V

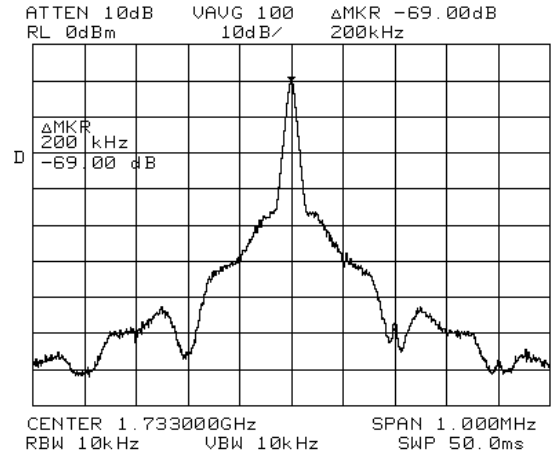
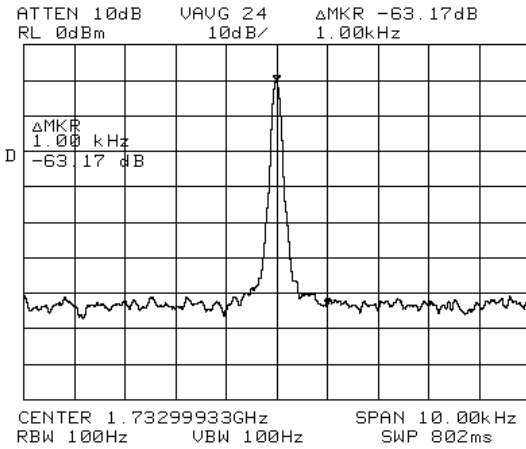


Loop Filter Values

Test Results

Phase Noise = -83.2 dBc/Hz

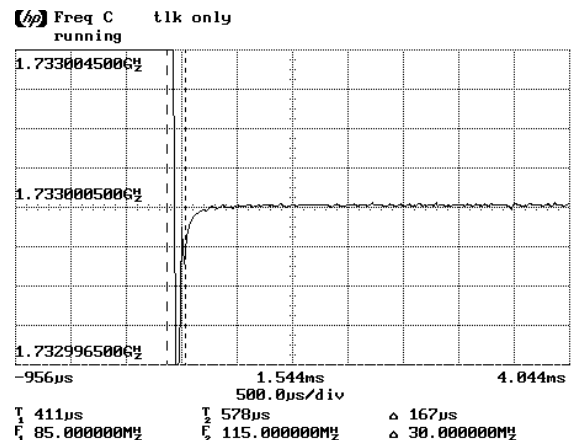
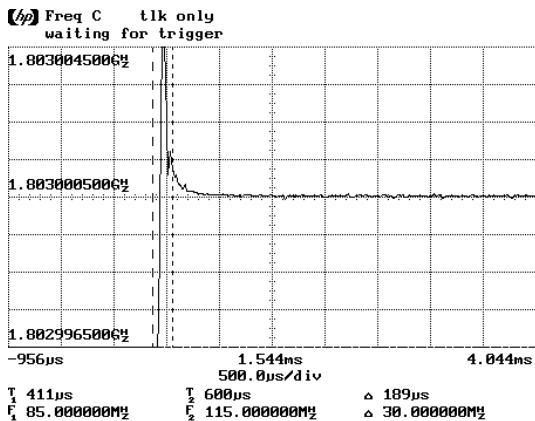
Spurious = -69.0 dBc



Switching Times

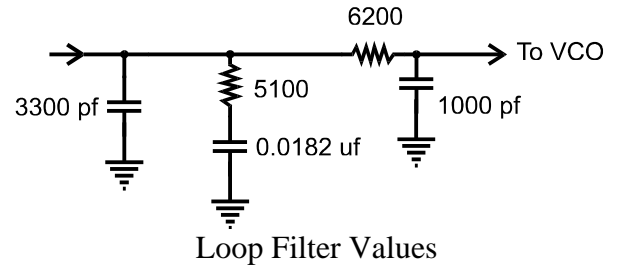
1733 to 1803 = 189 μ s

1803 to 1733 = 167 μ s



Reference Information: MB15F86UL

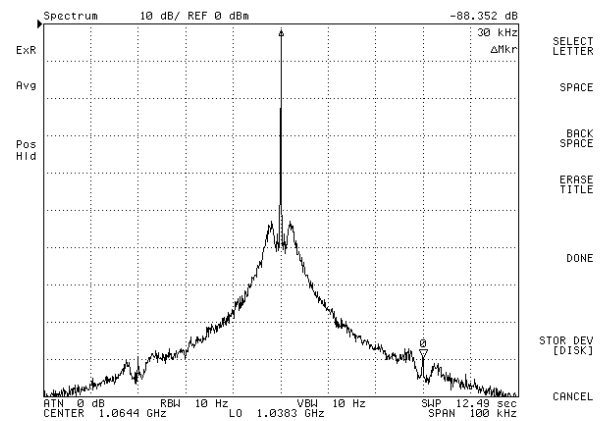
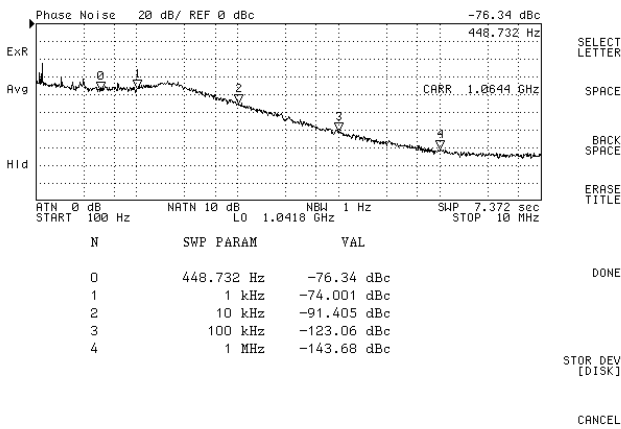
Frequencies: 1051.98 to 1078.17
 Step Size: 30 kHz
 Hop Time: Less than 2 Ms
 Charge Pump: 1.5 mA
 VCO Sens: 25 MHz/V



Test Results

Phase Noise = -76.34 dBc/Hz

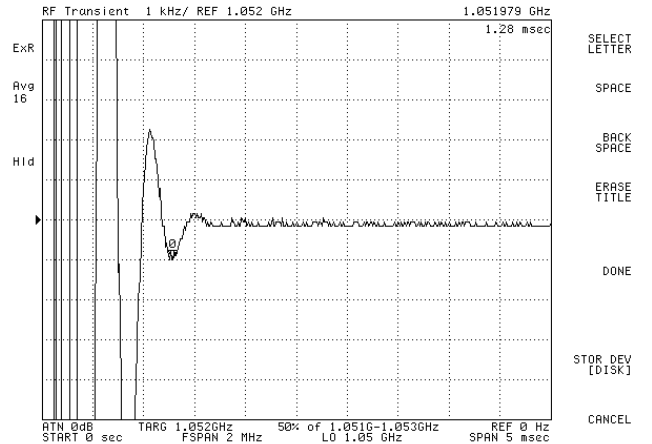
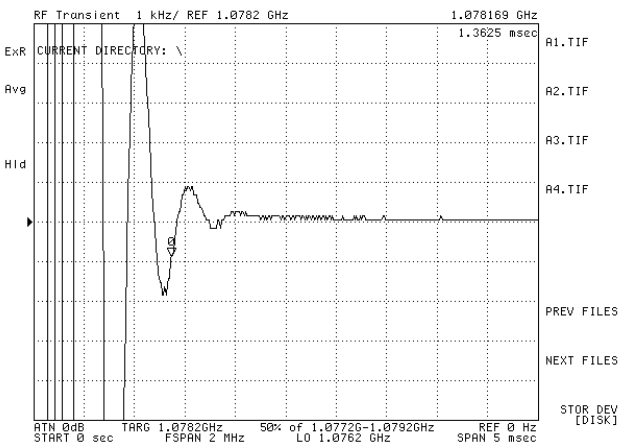
Spurious = -88.35 dBc



Switching Times

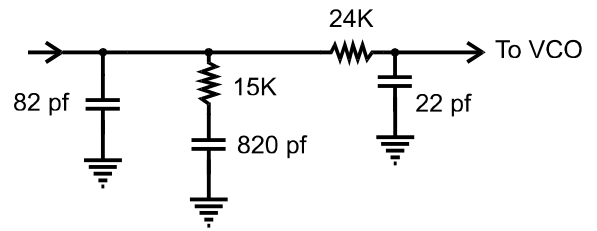
1051.98 to 1078.17 = 1.36 ms

1078.17 to 1051.98 = 1.28 ms



Reference Information: MB15F88UL

Frequencies: 2490 to 2550 MHz
 Step Size: 200 kHz
 Hop Time: Less than 2 μ s
 Charge Pump: 6.0 mA
 VCO Sens: 52 MHz/V

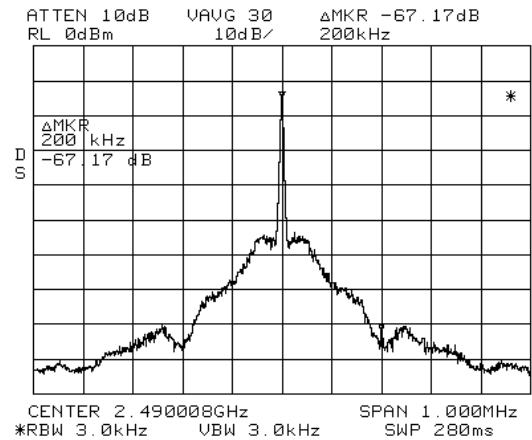
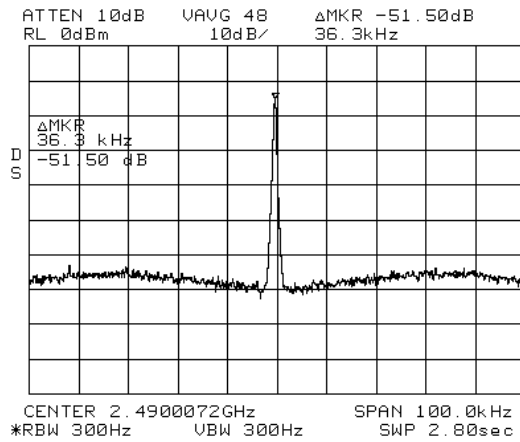


Loop Filter values

Test Results

Phase Noise = -76.3 dBc/Hz

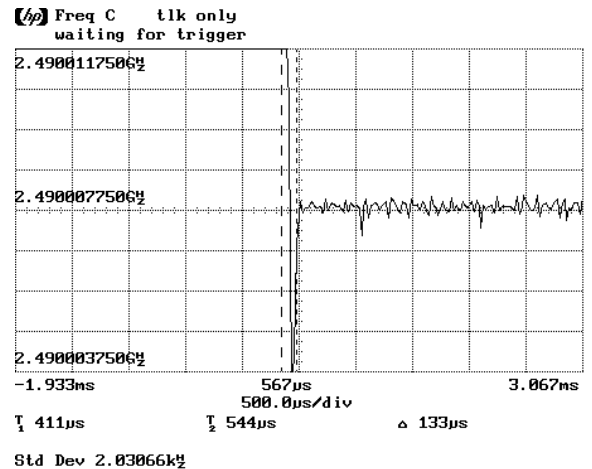
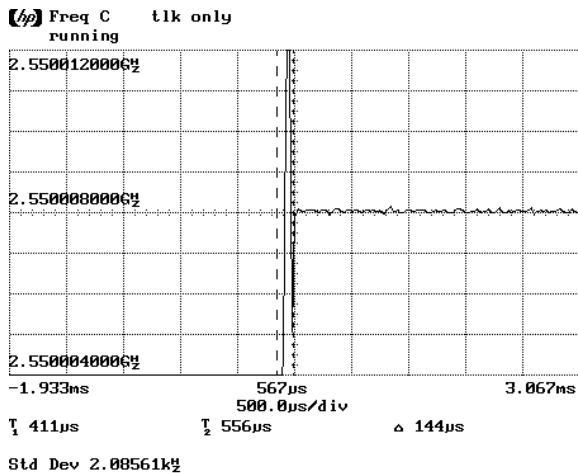
Spurious = -67.2 dBc



Switching Times

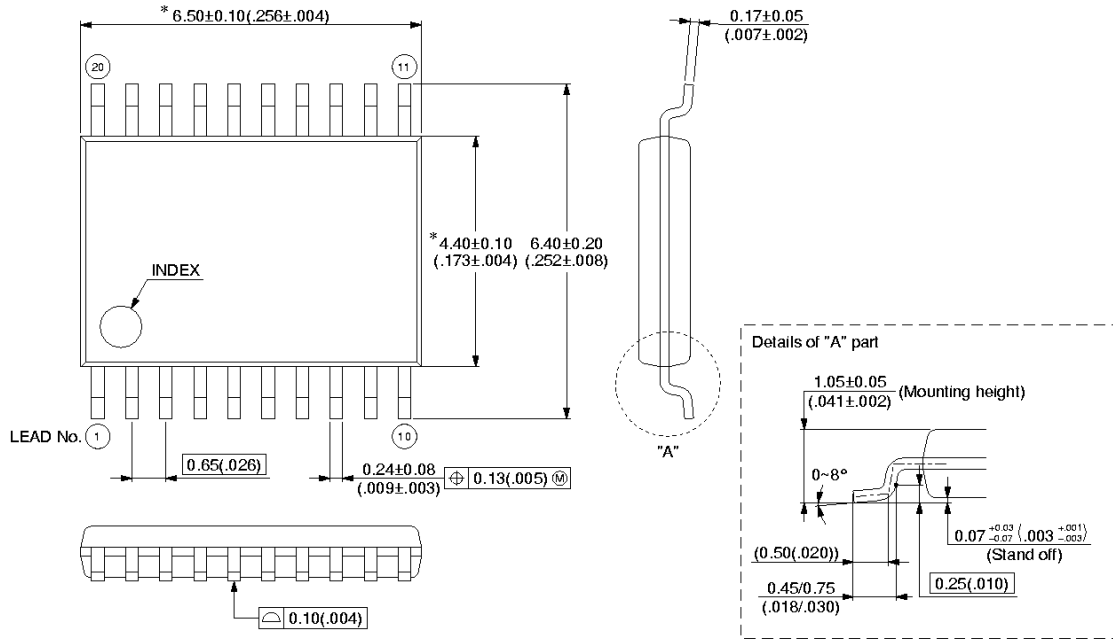
2490 to 2550 MHz = 144 μ s

2550 to 2490 MHz = 133 μ s

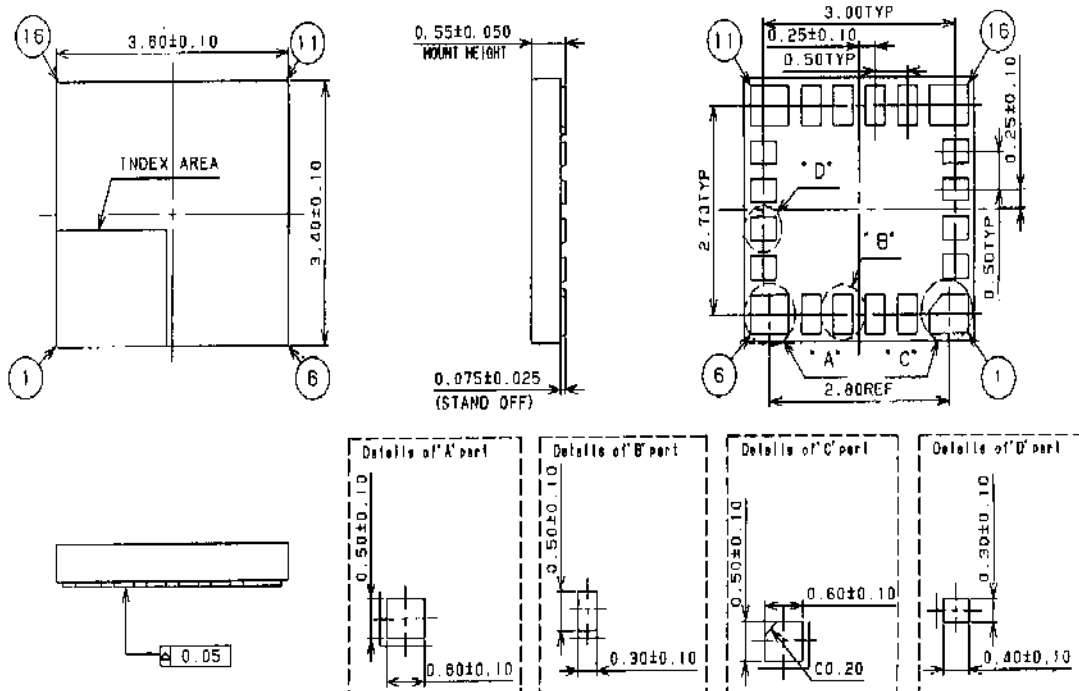


Package Dimensions

MB15F8xULPFT - 20 pin, Plastic SSOP (FPT-20P-M06)



MB15F8xULPVA - 20 pin, Plastic BCC (LCC-20P-M05)



Evaluation Systems

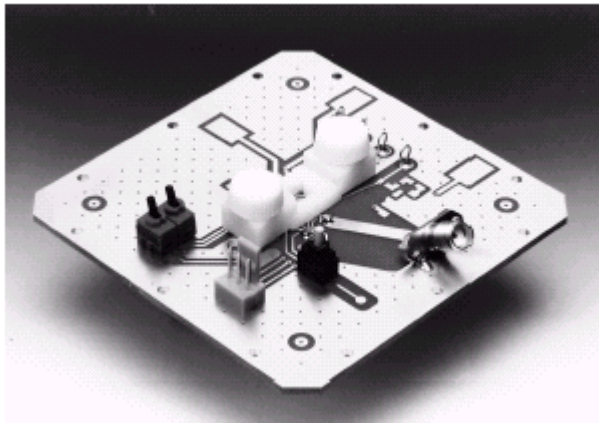
Designing a complex subsystem, such as a PLL, is no easy task. Therefore, Fujitsu has made available an evaluation system to aid in the development of reliable frequency synthesizers. Each evaluation system consists of two PCBs, controlling software, and instructions.

The RF PCB is laid out to allow the target MB158xUL to be optimized for the chosen application. The RF board is only semi-populated, which allows the user to configure it to fit the application.

Evaluation Board P/N's

MB1500EB16 for the TSSOP Package

MB1500EB16B for the BCC Package



Typical Evaluation Board

©2002 Fujitsu Microelectronics America, Inc. All rights reserved.

All company and product names are trademarks or registered trademarks of their respective owners.

With respect to any information contained in this document, Fujitsu makes no warranties, express, implied or otherwise, including but not limited to warranty of merchantability or of fitness for a particular purpose, or warranty that such information shall be free from errors or that such errors shall be corrected, or warranty that such information shall be free from infringement or patents, patent applications, copyrights, semiconductor chip protection rights, trade secrets and other proprietary or legal rights of a third party. In no event will Fujitsu be responsible for any incidental or consequential damages arising out of use of this information.

The information in this document does not convey any license under the copyrights, patent rights, or trademarks claimed and owned by Fujitsu Limited, its subsidiaries, or Fujitsu Microelectronics America, Inc.

Fujitsu Microelectronics America, Inc. reserves the right to change products or specifications without notice.

No part of this publication may be copied or reproduced in any form, or by any means, or transferred to any third party without prior written consent of Fujitsu Microelectronics America, Inc.
Printed in U.S.A.
PLL-DS-20933-5/2002

FUJITSU MICROELECTRONICS AMERICA, INC.

Corporate Headquarters

3545 North First Street, San Jose, California 95134-1804

Tel: (800) 866-8608 Fax: (408) 922-9179

E-mail: inquiry@fma.fujitsu.com Web Site: <http://www.fma.fujitsu.com>

Free Manuals Download Website

<http://myh66.com>

<http://usermanuals.us>

<http://www.somanuals.com>

<http://www.4manuals.cc>

<http://www.manual-lib.com>

<http://www.404manual.com>

<http://www.luxmanual.com>

<http://aubethermostatmanual.com>

Golf course search by state

<http://golfingnear.com>

Email search by domain

<http://emailbydomain.com>

Auto manuals search

<http://auto.somanuals.com>

TV manuals search

<http://tv.somanuals.com>