

ScanSnap iX100

**Simple, Speedy & Compact.
From Paper to PDF in One Touch!**



General Specifications

Description	ScanSnap iX100
Scanner type	CDF (Continuous Document Feeding), Simplex sheetfeed two-way paper path (Straight path, U-turn path)
Scanning modes	Color, grayscale, monochrome, automatic (color / grayscale / monochrome detection)
Image sensor	CIS (Contact Image Sensor) x 1
Light source	3 Color LED (Red / Green / Blue)
Optical resolution	600 dpi
Scanning speed*1 (A4 portrait)	Auto mode (default)*2
	Normal mode (150 dpi)
	Better mode (200 dpi)
	Best mode (300 dpi)
	Excellent mode (600 dpi)
Document size*3	Normal mode
	Normal mode with Carrier sheet
	Long paper scanning*4
Paper weight (Thickness)	●52.3 to 209.3 g/m ² , or 14 to 56 lb (Straight path)
	●52.3 to 80 g/m ² , or 14 to 20 lb (U-turn path)
	●Card
Paper setting	Portrait or Landscape (Straight path) Non-embossed: 0.76 mm or less Embossed: 0.76 + 0.48 mm (ISO7810 Conforming)
Continuous scanning	260 sheets (A4, color, simplex, 300 dpi, battery operated)*5
Interface*6	USB 2.0 (USB 1.1 compatible)
Power source	Li-ion Battery (3.7 V / 720 mAh)
Power requirement	5 V / 0.5 A (x 1port)
Power consumption*7	During operation: 4.7 W or less During sleep mode: 2.2 W or less During Auto Standby (OFF) mode: Less than 0.5 W
Operation environment	Temperature: 5 to 35 °C (41 to 95 °F) Relative humidity: 20 to 80% (Non-condensing)
Dimensions (W x D x H)*8	273 x 47.5 x 36 mm (10.74 x 1.87 x 1.42 in.)
Device weight	400 g (0.88 lb)
Environmental compliance	ENERGY STAR® compliant / RoHS
Multifeed detection	None
Driver	ScanSnap specific driver ●Windows®: Does not support TWAIN / ISIS™ ●Mac OS: Does not support TWAIN

*1 Scanning speeds may vary due to the system environment used. Scanning speed means the time from "Start feeding document" to "Finish output document" after pre-pick and pushing Scan button. In case of "From pushing Scan button, Warm-up time is added. *2 Warm-up time: From Ready status: Less than 2 seconds / From Chute Cover Closed Status: Less than 3 seconds *3 Documents measuring approximately 148 mm in length or less are scanned in "Best mode", while other documents are scanned in "Better mode". *4 Automatically stitch a two-page spread when scanning a folded A3, B4 or Double letter size document one side at a time. The image is automatically stitched only if texts or diagrams cover across the two-page spread. *5 The iX100 is capable of scanning documents that exceed A4 size in length. This function is available for all modes except for "Excellent mode". *6 The number of sheets that can be scanned when connected to a computer via Wi-Fi with fully charged battery. The number of sheets may vary due to the system environment used, usage method and repeated charging. *7 Computer with USB 3.0 will work as USB 2.0 guaranteed only with USB cable provided with product. *8 When operating with battery. *9 When chuter is closed.

Software

	Windows®	Mac OS
Driver*1	ScanSnap Manager V6.3 (TWAIN / ISIS™ not supported)	ScanSnap Manager V6.3 (TWAIN not supported)
Applications	ScanSnap Organizer V5.2	ScanSnap Organizer V1.1
	CardMinder™ V5.2	CardMinder™ V5.2
	ABBY FineReader for ScanSnap™ 5.0	ABBY FineReader for ScanSnap™ 5.0
	Scan to Microsoft® SharePoint®	-

*1 TWAIN or ISIS™ applications cannot be used directly.

Included items

●Getting started ●Set-up DVD-ROM ●USB cable

Consumables

Description	Part number	Remarks
Cleaner F1	PA03950-0352	100 ml bottle Used to clean rollers
Cleaning Wipe	PA03950-0419	1 pack (24 sheets) Used to clean rollers

This scanner is designed to digitize materials that can be reproduced lawfully, in accordance with applicable copyright regulations and other laws. ScanSnap users are responsible for how they use this scanner. It is imperative that ScanSnap users comply with all applicable local rules and laws, including, without limitation, copyright laws when using this scanner.

*ABBY and FineReader are trademarks of ABBYY Software, Ltd. which may be registered in some jurisdictions. ABBYY™ FineReader™ Engine ©2011 ABBYY. OCR by ABBYY. *Evernote is a registered trademark or trademark of Evernote Corporation. *Google and Google Docs are registered trademarks or trademarks of Google Inc. *Intel, Pentium, and Intel Core are trademarks or registered trademarks of Intel Corporation in the United States and other countries. *ISIS™ is a registered trademark of EMC Corporation in the United States. *Mac, Mac OS, Mac logo and iPhoto are trademarks of Apple Inc. *Microsoft, Windows, Windows Vista, Excel, PowerPoint and SharePoint are either registered trademarks or trademarks of Microsoft Corporation in the United States and/or other countries. *Word is the products of Microsoft Corporation in the United States. *PowerPC is a registered trademark or trademark of International Business Machines Corporation in the United States, other countries, or both. *Salesforce and Salesforce CRM are registered trademarks or trademarks of salesforce.com, inc. in the United States and other countries. *ScanSnap, ScanSnap logo, ScanSnap Manager, ScanSnap Organizer and CardMinder are registered trademarks or trademarks of PFI LIMITED in Japan. *Other company names and product names are the trademarks or registered trademarks of the respective companies.

For more ScanSnap related information, visit our Web site at : <http://scansnap.fujitsu.com/>

⚠ Safety Precautions	Be sure to carefully read all safety precautions prior to using this product and use this device as instructed.	Do not place this device in wet, moist, steamy, dusty or oily areas. Using this product under such conditions may result in electrical shock, fire or damage to this product.
-----------------------------	---	---

Specifications are subject to change without notice.

ScanSnap iX100 System Requirements

Windows®

Compatible operating systems	Windows® 8 / 8.1 (32-bit / 64-bit)	Windows® 7 (32-bit / 64-bit)*1	Windows Vista™ (32-bit / 64-bit)*2
Driver / Applications*3	ScanSnap Manager V6.3	Supported	Supported
	ScanSnap Organizer V5.2	Supported	Supported
	CardMinder™ V5.2	Supported	Supported
	ABBY FineReader for ScanSnap™ 5.0	Supported	Supported
	Scan to Microsoft SharePoint 3.4 Scan to Microsoft SharePoint 5.0	Supported	Supported
Hardware requirements*4	CPU*5	Intel® Core™ i5 2.5 GHz or higher	
	Memory capacity*5	4 GB or more	
	Display	1,024 x 768 pixels or higher	800 x 600 pixels or higher
	Disk capacity*6	2,690 MB or more of free hard disk space	
	DVD-ROM drive	Required for installation	
USB port*5*7	USB 2.0 / USB 1.1		

*1 Service Pack 1 or later required. *2 Service Pack 2 or later required. *3 For the latest support information, visit the ScanSnap homepage. *4 The ScanSnap device may not work if the connected computer does not meet this requirement. *5 Scanning speeds may drop if recommended CPU, memory capacity and USB 1.1 requirements are not met. *6 Microsoft .NET Framework 3.5 SP1 will be installed (requires 500 MB of disk space) together with either ScanSnap Manager or ScanSnap Organizer for systems that do not have .NET Framework 3.5 SP1 installed. *7 When the ScanSnap is connected to a USB 3.0 port, the port operates as a USB 2.0 port. *8 System requirements may change depending on the duration of support and the support policy of the companies that make the software listed in the table above.

Mac OS

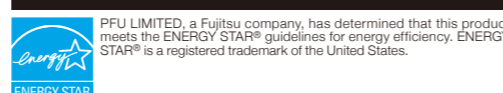
Compatible operating systems	OS X v10.9*1	OS X v10.8*2	Mac OS X v10.7*3
Driver / Applications*4	ScanSnap Manager V6.3	Supported	Supported
	ScanSnap Organizer V1.1	Supported	Supported
	CardMinder™ V5.2	Supported	Supported
	ABBY FineReader for ScanSnap™ 5.0	Supported	Supported
Hardware requirements*5	CPU*6	Intel® Core™ i5 2.5 GHz or higher	
	Memory capacity*6	4 GB or more	
	Display	1,024 x 768 pixels or higher	
	Disk capacity	1,930 MB or more of free hard disk space	
	DVD-ROM drive	Required for installation	
USB port*5*7	USB 2.0 / USB 1.1		

*1 OS X v10.9.1 or later recommended. *2 OS X v10.8.5 recommended. *3 Mac OS X v10.7.5 recommended. *4 For the latest support information, visit the ScanSnap homepage. *5 The ScanSnap device may not work if the connected computer does not meet this requirement. *6 Scanning speeds may drop if recommended CPU, memory capacity and USB 1.1 requirements are not met. *7 When the ScanSnap is connected to a USB 3.0 port, the port operates as a USB 2.0 port. *8 System requirements may change depending on the duration of support and the support policy of the companies that make the software listed in the table above.

Options

Description	Part number	Remarks
AC adapter	PA03010-6571 USA, Canada & Taiwan	The AC adapter may vary depending on the country where you purchased the ScanSnap and the specifications of the ScanSnap.
	PA03010-6581 EMEA, England	
	PA03010-6591 China	
	PA03010-6601 Korea	
	PA03010-6611 Australia	
	PA03010-6621 India	
	PA03010-6631 Brazil	
ScanSnap iX100 Case*1	PA03688-0001	Intended for ScanSnap iX100
ScanSnap iX100 Soft Case*1	PA03688-0011	
ScanSnap Carrier Sheets*2	PA03360-0013	5 Carrier Sheets Intended for ScanSnap iX500, iX100, S1500, S1500M, S1100i, S1100

*1 This product has been especially designed for storing and carrying ScanSnap iX100. Please note that this product is not guaranteed to withstand damage by excessive shock or external pressure. *2 Although ScanSnap Carrier Sheets have a listed lifespan of 500 scans, the lifespan may vary with usage. ScanSnap Carrier sheets are intended to scan paper documents with weights of 127 g/m² or less. They also support the scanning of folded documents that are as large as 216 x 297 mm.



PFI LIMITED, a Fujitsu company, has determined that this product meets the ENERGY STAR® guidelines for energy efficiency. ENERGY STAR® is a registered trademark of the United States.

shaping tomorrow with you

New features

- ▶ The world's lightest compact body
- ▶ The fastest mobile scanner in its class
- ▶ No need to switch the Wi-Fi mode manually
- ▶ Battery operated without the necessity of cable connection
- ▶ Dual Scan - scanning 2 small sized documents at the same time
- ▶ Automatically stitch a two-page spread

Bundle software

- ▶ CardMinder (Win / Mac)



Productivity unleashed

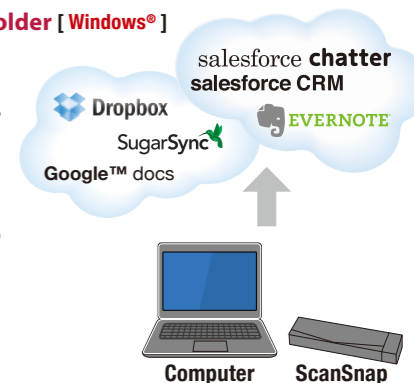


Easily links documents to clouds

You can scan nearly effortlessly to Evernote, Google Docs, Salesforce, SugarSync and Dropbox, and then conveniently browse the data from computers, tablets or smartphones - anywhere, anytime.

Introducing ScanSnap Folder [Windows®]

ScanSnap folder is created in the Windows OS, so you can scan directly to the ScanSnap folder when you select ScanSnap folder in the file attachment selection dialog. In this way, you do not have to save the data in the computer beforehand and the operation is smooth and effective.



The world's lightest compact body*

The iX100 is only 400g in weight even with built-in battery and Wi-Fi connectivity. The compact and light body make it a convenient companion when traveling or on the road.

*Based on the investigation by PFU LIMITED on A4 document feed type scanner with built-in battery and Wi-Fi connectivity. (as of April 1st, 2014)

The fastest mobile scanner in its class*

The iX100 is the fastest A4 sheetfeed scanner with built-in battery and Wi-Fi connectivity; it can scan at a snappy speed of 5.2 seconds/page for color A4 document at a resolution of up to 300 dpi.

*Based on the investigation by PFU LIMITED on A4 document feed type scanner with built-in battery and Wi-Fi connectivity. (as of April 1st, 2014)

Battery operated without the necessity of cable connection

The iX100 can be scanned without the cables, so you can use it when power supply is unavailable or limited. The scanner is always ready to be used immediately when needed.

Scans plastic cards and other various document types*

In addition to standard paper types, the iX100 can scan plastic cards like the ones used for membership IDs.

*ISO 7810 card types (including embossed cards)



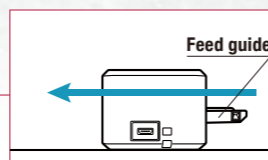
Two selectable paper paths

Depending on the document to be scanned, there are two ways that it can exit the iX100.

Straight path

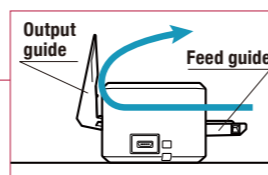
Most suitable for scanning post cards, photos, business cards, plastic cards*, ScanSnap Carrier Sheet (Option), and common office paper.

*This applies to standard ISO 7810 ID-1 card types.



U-turn path

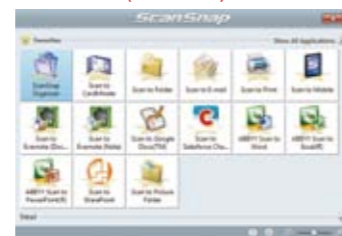
Most suitable for scanning common office paper and you do not need extra space for the document output.



Fast and flexible application of scanned data with Quick Menu

Users just choose what they want to do from the Quick Menu, which appears after a document has been scanned. iX100's Quick Menu is perfect for everyone, even the complete novice!

Quick Menu (Windows®)



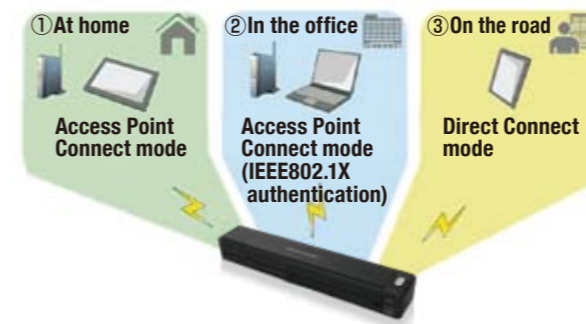
Quick Menu (Mac OS)



No need to switch the Wi-Fi mode manually for comfortable scanning anywhere, anytime

The ScanSnap iX100 is equipped with built-in Wi-Fi which is able to automatically detect and switch to the network environment at home, in the office or on the go. You only need to set up initially and iX100 can be scanned wirelessly directly to any platform even without Wi-Fi network in the environment.

- At home: Connect via the access point of the router at home
- In the office: Connect to the secured Wi-Fi network via IEEE802.1X (network device authentication)
- On the road: Connect via Direct Connect mode (do not need an access point)



New features for quick digitization

Dual scan - scanning 2 small sized documents at the same time

With this new feature, you can scan 2 small sized documents such as business card and receipt at the same time. Simply insert documents continuously to the paper feeding entry to greatly reduce your scanning time and lead to increased efficiency.



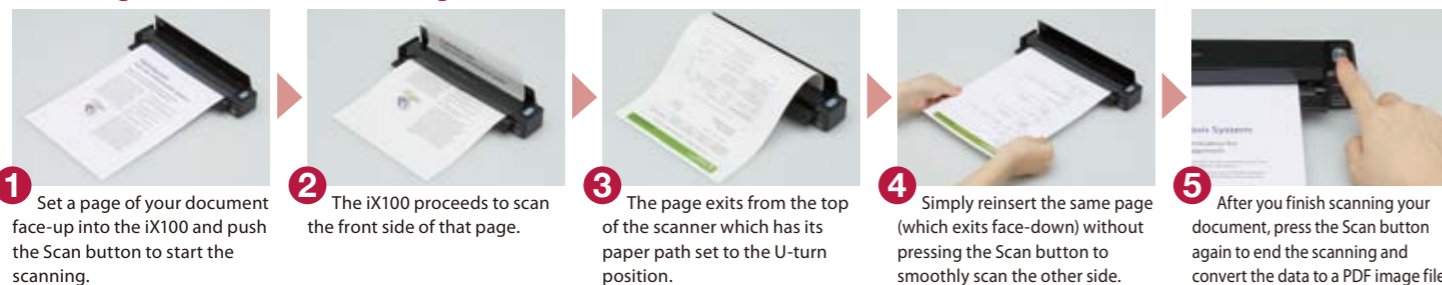
Automatically stitch a two-page spread

Even documents larger than A4 size can be scanned without any extra effort. Just fold the large documents in half and the iX100 will automatically stitch the diagram or chart that is spread across two pages after scanning.

Continuous Document Feeding (CDF Function)

The Continuous Document Feeding function allows you to insert pages one after another without pressing any extra button by detecting when a sheet enters and exits the iX100.

Scanning a two-sided document using the CDF Function



Download from www.somanuals.com. All Manuals Search And Download.

Efficiently organize data from scanned business cards

Business card organizer software

CardMinder™ V5.2 [Windows®]

CardMinder™ V5.2 [Mac OS]

- Scan your collection of business cards into easy to navigate digital business card holders.
- Import the data from your scanned business cards into Excel, Outlook, Address book (Mac OS) and other database programs for fast referencing and application.

Generates Microsoft® Word, Excel®, PowerPoint® files

Top-class OCR engine

ABBYY FineReader for ScanSnap™ 5.0 [Windows®]

ABBYY FineReader for ScanSnap™ 5.0 [Mac OS]

Smoothly scan and convert paper documents into Word, Excel® and PowerPoint® documents.

*Only Microsoft® Word and Excel® are available for Mac OS.
*Generated images and text may vary from the original.

Carrying case (Option)

Two convenient carrying cases intended for the iX100 are available. (See disclaimer under "Option" in the next page.)



Free Manuals Download Website

<http://myh66.com>

<http://usermanuals.us>

<http://www.somanuals.com>

<http://www.4manuals.cc>

<http://www.manual-lib.com>

<http://www.404manual.com>

<http://www.luxmanual.com>

<http://aubethermostatmanual.com>

Golf course search by state

<http://golfingnear.com>

Email search by domain

<http://emailbydomain.com>

Auto manuals search

<http://auto.somanuals.com>

TV manuals search

<http://tv.somanuals.com>