

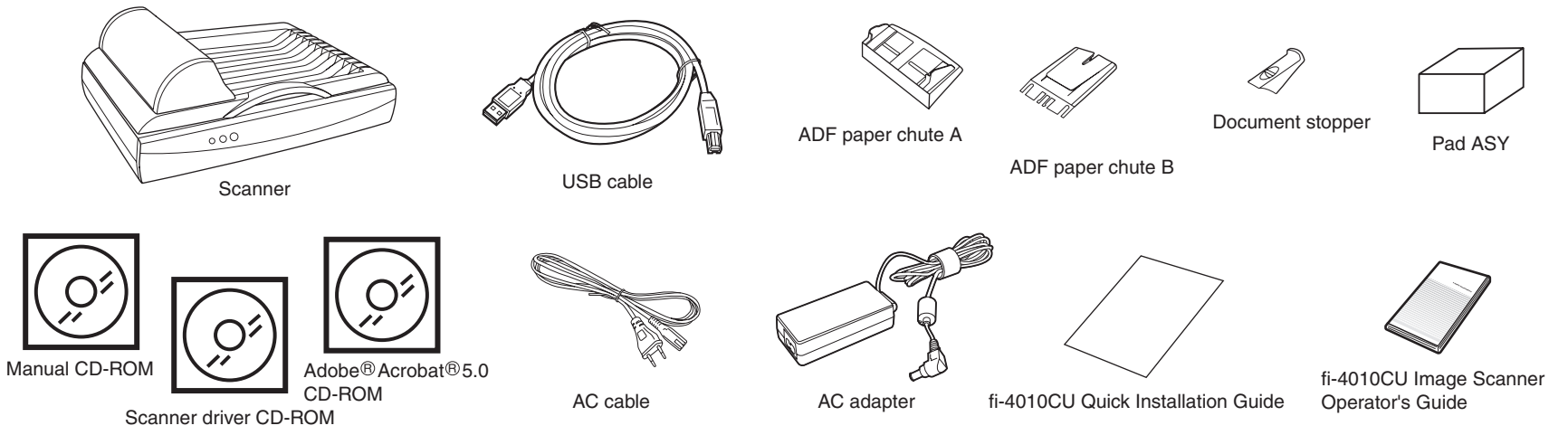
fi-4010CU Quick Installation Guide

Refer to the "fi-4010CU Image Scanner Operator's Guide" when you would like to know more about the scanner.
Refer to the "Scanner Utility for Microsoft® Windows® User's Guide" on the Scanner driver CD-ROM when you would like to know more detailed information about the FUJITSU TWAIN32 Scanner driver installation.

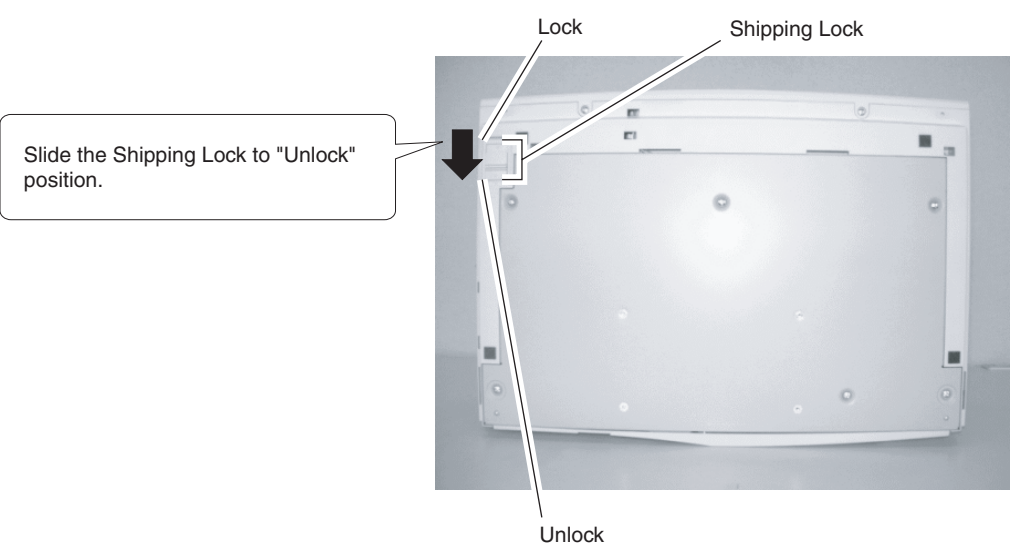
Carefully read the "fi-4010CU Image Scanner Operator's Guide" before using this product.
Particularly read and understand the "Safety Precautions" before using this product.

1 Check the scanner and accessories

Confirm that all of the following items are included.



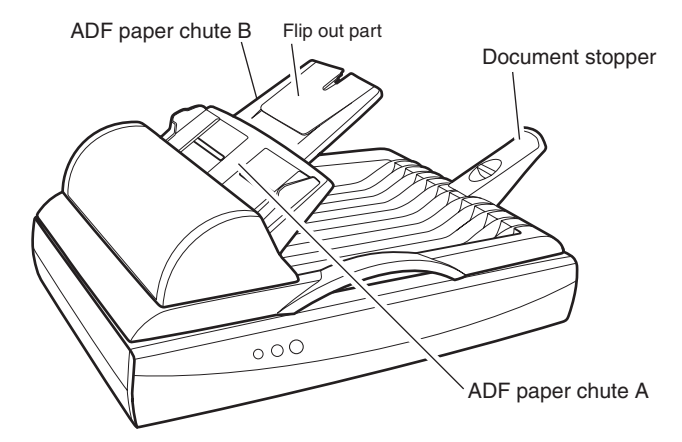
2 Release the Shipping Lock



1. Raise the scanner carefully upward so that bottom side of the scanner faces towards you.
2. Slide the lock switch to "Unlock" position to release the lock.

3 Attach the ADF paper chute and Document stopper

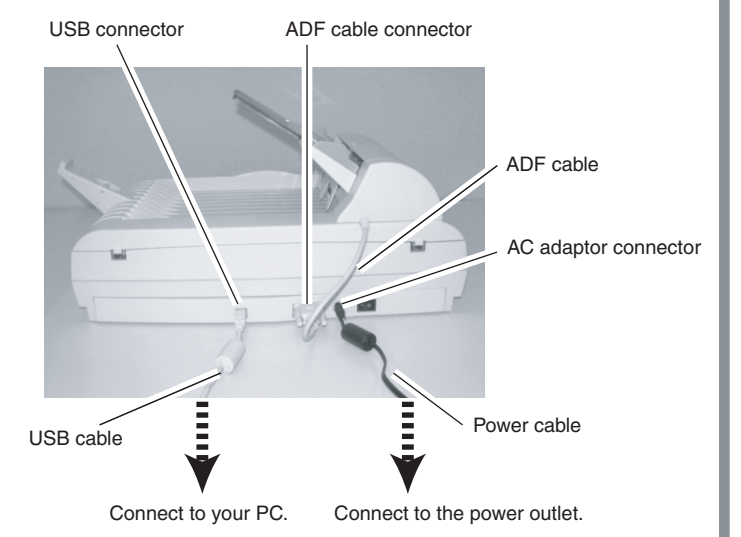
1. Attach the ADF paper chute A to the ADF unit so that the side guide of the ADF paper chute faces up.
2. Attach the ADF paper chute B to the ADF paper chute A so that the flip out part of the ADF paper chute B faces up.
3. Insert the claws of the document stopper into the slots of the scanner. Slide the document stopper in the direction of the arrow marked on it to fix the stopper.



4 Connect the USB cable, ADF cable, and power cable

Caution Before connecting the scanner, be sure to turn off the PC and the scanner.

1. Insert smaller connector of the USB cable(the one with a core) to the USB connector on the back side of the scanner.
2. Connect the other end of the USB cable to the PC.
3. Connect the ADF cable to the ADF cable connector of the scanner, and fix the thumb screws of the ADF cable connector.
4. Connect the power cable to the AC adapter and connect the AC adapter to the AC adaptor connector of the scanner.
5. Insert the power cable to the power outlet.



5 Install FUJITSU TWAIN32 Scanner driver

Windows® 98, Windows® Me, Windows® 2000, Windows® XP

Caution Be sure to install the TWAIN data source after installing the mini-driver.
If the old version of FUJITSU TWAIN32 Scanner driver has been installed on your personal computer, refer to the "Scanner Utility for Microsoft® Windows® User's Guide" on the Scanner driver CD-ROM, and update the mini-driver.

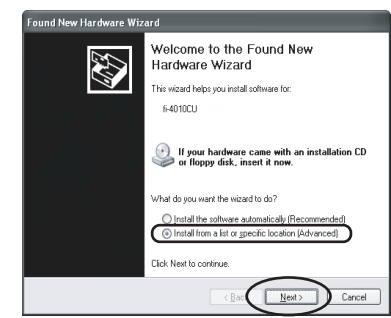
The Windows® XP screen samples are shown below. The screen and operations will differ slightly depending on the OS that is being used.

■ Preparation

Confirm that the Scanner is connected to your personal computer with the USB cable.

■ Installing the mini-driver

1. Turn on the power by pushing the power switch in the back of the scanner.
The power lamp lights.
2. Turn on your personal computer and log on to Windows®.
When using Windows® 2000 or Windows® XP log on as an administrator. The "Found New Hardware Wizard" dialog box is displayed.
3. Check "Install from list or specified location", then click [Next].



- For Windows® Me check "Specify the driver location", then click [Next].
For Windows® 2000 and Windows® 98, clicking on [Next] the select search method screen is displayed.
- For Windows® 98 select "Find the most suitable driver for the device being used" then click [Next].
 - For Windows® 2000 select "Find the most suitable driver for the device" then click [Next].

4. Insert the Scanner driver CD-ROM

Caution When automatic start has been set, the "SETUP DISK START UP SCREEN" is displayed. To close this screen, click the [Exit] button on this screen.

5. Select "Find the most suitable driver in the next location".
Check "Include the next location" then specify D:\Driver2 (When your CD-ROM is the D drive). After that click [Next].

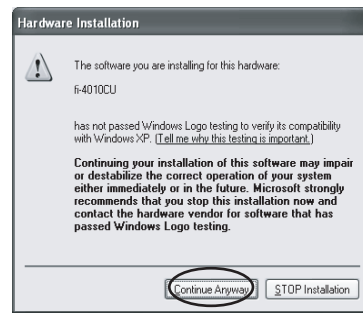


- For Windows® 98, just check "Specify search location" then specify D:\Driver2 (When your CD-ROM is the D drive). After that click [Next].
For Windows® Me, select "Find the most suitable driver for the device being used" then click [Next]. Check "Specify search location" then specify D:\Driver2 (When your CD-ROM is the D drive). After that click [Next].
For Windows® 2000, just check "Specify location" and then in the next screen specify "Copy source for origination file" then specify D:\Driver2 (When your CD-ROM is the D drive), then click [OK].

Continued on next page →

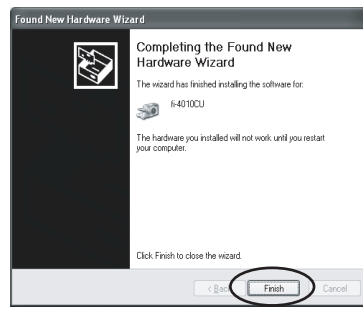
Continued from previous page

6. For **Windows® XP**, the next screen is displayed, click [Continue] and complete the installation.
For other operating systems click [Next].



Caution For **Windows® 98** there is a request to insert a disc. When this happens, insert the **Windows® 98** CD-ROM.

7. Click [Finish].



8. Restart the system.
After restarting the system install the TWAIN data source.

■ Installing TWAIN data source

When using **Windows® 2000** or **Windows® XP** log on as an administrator.

1. Insert the Scanner Driver CD-ROM, then use the explorer to double click on D:\Driver2\Setup\install.exe (when your CD-ROM is the D drive).

Hint When automatic start has been set, the "SETUP DISK START UP SCREEN" is displayed. Installation can be started from this screen also.

2. Follow the instruction on the screen to complete the installation. Make the best selection that suits your needs. Select the language you will use during installation. Check the names of components that need to be installed in [Select Components]. Explanation of the component is displayed underneath it. Check the installation directory. If you need to change the installation destination, click the [Change Directory] button then specify the destination. Click the [Continue] button to start the installation.

3. When installation is finished, confirm that the following folder has been created. The icons displayed differ depending on the setting in [Select Component] during installation.



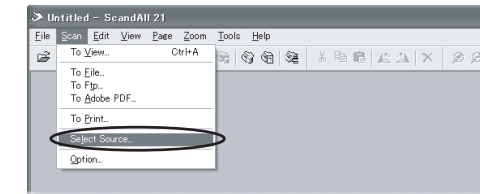
Continue by installing Image Capturing Software Utilities "ScandAll 21" for Microsoft® Windows®.

7 Scanning documents

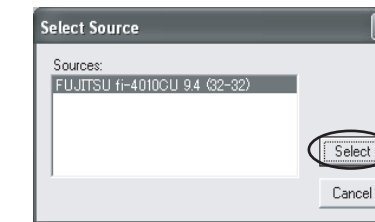
Confirm that the scanner works correctly, as follows.

1. Place a document on the ADF paper chute. For details on how to load documents, see " 3.2 Scanning document with ADF" in the "fi-4010CU Image Scanner Operator's Guide"

2. Start ScandAll 21. In the start menu select [Program] then [Scanner Utility for Microsoft Windows] then [ScandAll 21] in that order.



3. Specify the scanner you are using. Select [Select Source] from the [Scan] menu in ScandAll 21.

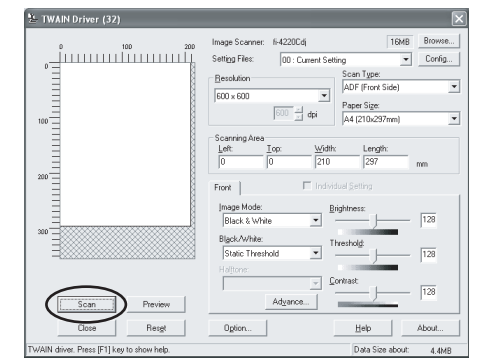


In the dialog box that is displayed, select "FUJITSU fi-4010CU" then click [Select].

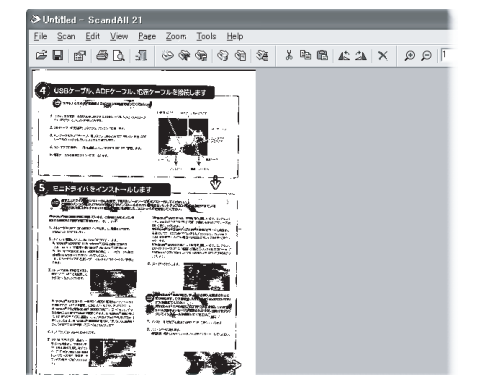
4. Click [Scan preview screen] in the toolbar.



5. In [TWAIN Driver] (Scan conditions setting screen) set the scan resolution, paper size and other scanning conditions, and click the [Scan] button. For details on settings in the [TWAIN Driver] dialog box, refer to the "Scanner Utility for Microsoft® Windows® User's Guide" on the Scanner driver CD-ROM.



The document is scanned and the image is displayed on the ScandAll 21 screen.



If the document can be scanned then setup has been successfully finished.

See "ScandAll 21 Help" for information about ScandAll 21 functions and operations.

Installation end

6 Install Image Capturing Software Utilities "ScandAll 21" for Microsoft® Windows®

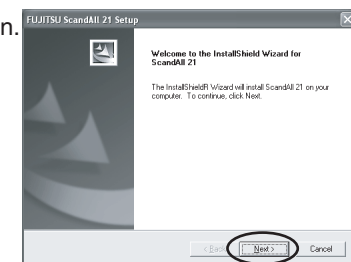
When using **Windows® 2000** or **Windows® XP**, log on as an administrator.

1. Insert the Scanner driver CD-ROM, then use explorer to double click on ScandAll 21.exe in the ScandAll folder in the CD-ROM drive.

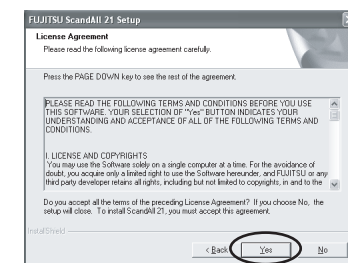
2. Select the language you use during installation in [Choose Setup Language] then click [OK]. This screen might not be displayed.



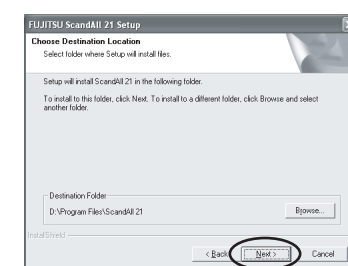
3. Click [Next] in the welcome screen.



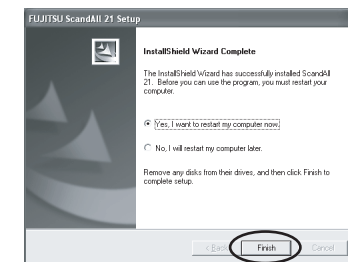
4. Carefully read the License Agreement then click [Yes], if you agree.



5. Confirm the name of the destination folder then click [Next].



6. Click [Finish].



The screen images may be changed due to improvements without notice.

If the displayed screen images are different from the screen images in this guide follow the actual screen display for installation. Please also refer to the software operation manual and do the installation according to the actual screens.

Free Manuals Download Website

<http://myh66.com>

<http://usermanuals.us>

<http://www.somanuals.com>

<http://www.4manuals.cc>

<http://www.manual-lib.com>

<http://www.404manual.com>

<http://www.luxmanual.com>

<http://aubethermostatmanual.com>

Golf course search by state

<http://golfingnear.com>

Email search by domain

<http://emailbydomain.com>

Auto manuals search

<http://auto.somanuals.com>

TV manuals search

<http://tv.somanuals.com>