

# VIDEO CASSETTE PLAYER

## MFV209C



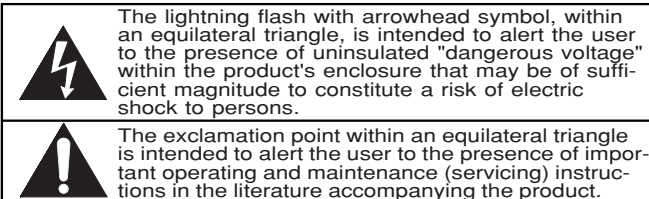
If you need additional operating assistance after reading this owner's manual or to order replacement accessories, please call TOLL FREE : 1-800-242-7158.

**WARNING:** TO REDUCE THE RISK OF FIRE OR ELECTRIC SHOCK, DO NOT EXPOSE THIS APPLIANCE TO RAIN OR MOISTURE.



**CAUTION:** TO REDUCE THE RISK OF ELECTRIC SHOCK, DO NOT REMOVE COVER (OR BACK). NO USER SERVICEABLE PARTS INSIDE. REFER SERVICING TO QUALIFIED SERVICE PERSONNEL.

The caution marking is located on the rear of the cabinet.

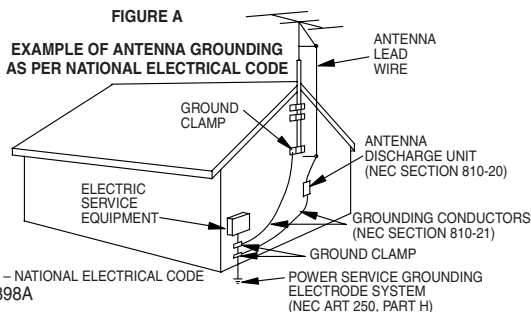


The lightning flash with arrowhead symbol, within an equilateral triangle, is intended to alert the user to the presence of uninsulated "dangerous voltage" within the product's enclosure that may be of sufficient magnitude to constitute a risk of electric shock to persons.

The exclamation point within an equilateral triangle is intended to alert the user to the presence of important operating and maintenance (servicing) instructions in the literature accompanying the product.

## IMPORTANT SAFEGUARDS

- 1. Read Instructions-** All the safety and operating instructions should be read before the appliance is operated.
- 2. Retain Instructions-** The safety and operating instructions should be retained for future reference.
- 3. Heed Warnings-** All warnings on the appliance and in the operating instructions should be adhered to.
- 4. Follow Instructions-** All operating and use instructions should be followed.
- 5. Cleaning-** Unplug this video product from the wall outlet before cleaning. Do not use liquid cleaners or aerosol cleaners. Use a damp cloth for cleaning.  
**EXCEPTION:** A product that is meant for uninterrupted service and, that for some specific reason, such as the possibility of the loss of an authorization code for a CATV converter, is not intended to be unplugged by the user for cleaning or any other purpose, may exclude the reference to unplugging the appliance in the cleaning description otherwise required in item 5.
- 6. Attachments-** Do not use attachments not recommended by the video product manufacturer as they may cause hazards.
- 7. Water and Moisture-** Do not use this video product near water, for example, near a bath tub, wash bowl, kitchen sink, or laundry tub, in a wet basement, or near a swimming pool, and the like.
- 8. Accessories-** Do not place this video product on an unstable cart, stand, tripod, bracket, or table. The video product may fall, causing serious injury to a child or adult, and serious damage to the appliance. Use only with a cart, stand, tripod, bracket, or table recommended by the manufacturer, or sold with the video product. Any mounting of the appliance should follow the manufacturer's instructions and should use a mounting accessory recommended by the manufacturer. An appliance and cart combination should be moved with care. Quick stops, excessive force, and uneven surfaces may cause the appliance and cart combination to overturn.  
PORTABLE CART WARNING (Symbol provided by RETAC) S3125A
- 9. Ventilation-** Slots and openings in the cabinet are provided for ventilation and to ensure reliable operation of the video product and to protect it from overheating, and these openings must not be blocked or covered. The openings should never be blocked by placing the video product on a bed, sofa, rug, or other similar surface. This video product should not be placed in a built-in installation such as a bookcase or rack unless proper ventilation is provided or the manufacturer's instructions have been adhered to.
- 10. Power Sources-** This video product should be operated only from the type of power source indicated on the marking label. If you are not sure of the type of power supply to your home, consult your appliance dealer or local power company. For products intended to operate from battery power, or other sources, refer to the operating instructions.
- 11. Grounding or Polarization-** This video product is equipped with a polarized alternating-current line plug (a plug having one blade wider than the other). This plug will fit into the power outlet only one way. This is a safety feature. If you are unable to insert the plug fully into the outlet, try reversing the plug. If the plug should still fail to fit, contact your electrician to replace your obsolete outlet. Do not defeat the safety purpose of the polarized plug.
- 12. Power Cord Protection-** Power supply cords should be routed so that they are not likely to be walked on or pinched by items placed upon or against them, paying particular attention to cords at plugs, convenience receptacles, and the point where they exit from the appliance.
- 13. Outdoor Antenna Grounding-** If an outside antenna or cable system is connected to the video product, be sure the antenna or cable system is grounded so as to provide some protection against voltage surges and built-up static charges. Article 810 of the National Electrical Code, ANSI/NFPA No. 70, provides information with regard to proper grounding of the mast and supporting structure, grounding of the lead-in wire to an antenna discharge unit, size of grounding conductors, location of antenna-discharge unit, connection to grounding electrodes, and requirements for the grounding electrode. (Fig. A)



- 14. Lightning-** For added protection for this video product during a lightning storm, or when it is left unattended and unused for long periods of time, unplug it from the wall outlet and disconnect the antenna or cable system. This will prevent damage to the video product due to lightning and power-line surges.
- 15. Power Lines-** An outside antenna system should not be located in the vicinity of overhead power lines or other electric light or power circuits, or where it can fall into such power lines or circuits. When installing an outside antenna system, extreme care should be taken to keep from touching such power lines or circuits as contact with them might be fatal.
- 16. Overloading-** Do not overload wall outlets and extension cords as this can result in a risk of fire or electric shock.
- 17. Object and Liquid Entry-** Never push objects of any kind into this video product through any openings as they may touch dangerous voltage points or short-out parts that could result in a fire or electric shock. Never spill liquid of any kind on the video product.
- 18. Servicing-** Do not attempt to service this video product yourself as opening or removing covers may expose you to dangerous voltage or other hazards. Refer all servicing to qualified service personnel.
- 19. Damage Requiring Service-** Unplug this video product from the wall outlet and refer servicing to qualified service personnel under the following conditions:
  - a. When the power-supply cord or plug is damaged.
  - b. If liquid has been spilled, or objects have fallen into the video product.
  - c. If the video product has been exposed to rain or water.
  - d. If the video product does not operate normally by following the operating instructions. Adjust only those controls that are covered by the operating instructions as an improper adjustment of other controls may result in damage and will often require extensive work by a qualified technician to restore the video product to its normal operation.
  - e. If the video product has been dropped or damaged in any way.
  - f. When the video product exhibits a distinct change in performance-this indicates a need for service.
- 20. Replacement Parts-** When replacement parts are required, be sure the service technician has used replacement parts specified by the manufacturer or have the same characteristics as the original part. Unauthorized substitutions may result in fire, electric shock or other hazards.
- 21. Safety Check-** Upon completion of any service or repairs to this video product, ask the service technician to perform safety checks to determine that the video product is in proper operating condition.
- 22. Heat-** This video product should be situated away from heat sources such as radiators, heat registers, stoves, or other products (including amplifiers) that produce heat.

# PRECAUTIONS

## INSTALL LOCATION

For safety and optimum performance of your VCP:

- Install the VCP in a horizontal and stable position. Do not place anything directly on top of the VCP. Do not place the VCP directly on top of the TV.
- Shield it from direct sunlight and keep it away from sources of intense heat. Avoid dusty or humid places. Avoid places with insufficient ventilation for proper heat dissipation. Do not block the ventilation holes on the sides of the VCP. Avoid locations subject to strong vibration or strong magnetic fields.

## AVOID THE HAZARDS OF ELECTRICAL SHOCK AND FIRE

- Do not handle the power cord with wet hands.
- Do not pull on the power cord when disconnecting it from AC wall outlet. Grasp it by the plug.
- If, by accident, water is spilled on your VCP, unplug the power cord immediately and take the unit to our Authorized Service Center for servicing.
- Do not put your fingers or objects into the VCP cassette holder.

## MOISTURE CONDENSATION WARNING

Moisture condensation may occur inside the unit when it is moved from a cold place to a warm place, or after heating a cold room or under conditions of high humidity. Do not use the VCP at least for 2 hours until its inside is dry.

## FCC WARNING

This equipment may generate or use radio frequency energy. Changes or modifications to this equipment may cause harmful interference unless the modifications are expressly approved in the instruction manual. The user could lose the authority to operate this equipment if an unauthorized change or modification is made.

## IMPORTANT COPYRIGHT INFORMATION

Unauthorized recording or use of broadcast television programming, video tape, film or other copyrighted material may violate applicable copyright laws. We assume no responsibility for the unauthorized duplication, use, or other acts which infringe upon the rights of copyright owners.

## A NOTE ABOUT RECYCLING

This product's packaging materials are recyclable and can be reused. Please dispose of any materials in accordance with your local recycling regulations.

Batteries should never be thrown away or incinerated but disposed of in accordance with your local regulations concerning chemical wastes.

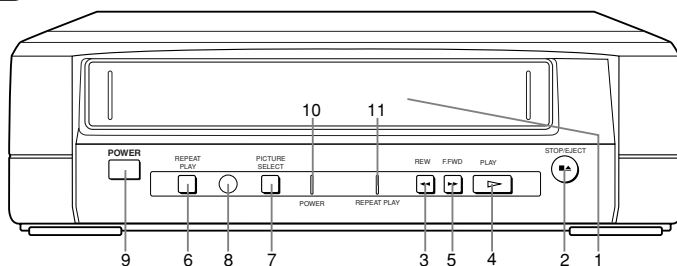
## Note to the Cable TV System Installer:

This reminder is provided to call the Cable TV system installer's attention to Article 820-40 of the National Electrical Code, which provides guidelines for proper grounding – in particular, specifying that the cable ground shall be connected to the grounding system of the building, as close to the point of cable entry as possible.

**CAUTION:**  
**TO PREVENT ELECTRIC SHOCK, MATCH WIDE**  
**BLADE OF PLUG TO WIDE SLOT, FULLY INSERT.**  
**ATTENTION:**  
**POUR ÉVITER LES CHOC ÉLECTRIQUES,**  
**INTRODUIRE LA LAME LA PLUS LARGE DE LA**  
**FICHE DANS LA BORNE CORRESPONDANTE**  
**DE LA PRISE ET POUSSER JUSQU'AU FOND.**

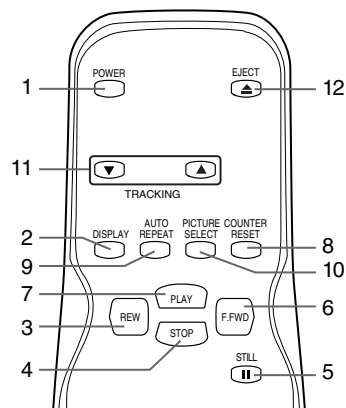
# DESCRIPTION OF CONTROLS

Front Panel



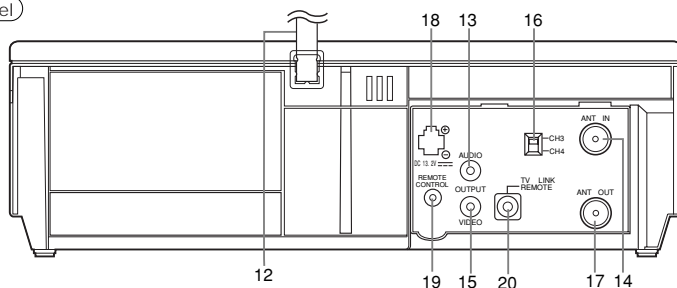
- 1. Cassette Compartment
- 2. STOP/EJECT button
- 3. REW button
- 4. PLAY button
- 5. F.FWD button
- 6. REPEAT PLAY button
- 7. PICTURE SELECT
- 8. Remote Sensor
- 9. POWER button
- 10. POWER indicator
- 11. REPEAT PLAY indicator

Remote Control



- 1. POWER button
- 2. DISPLAY button
- 3. REW button
- 4. STOP button
- 5. STILL button
- 6. F.FWD button
- 7. PLAY button
- 8. COUNTER RESET button
- 9. AUTO REPEAT button
- 10. PICTURE SELECT button
- 11. TRACKING buttons
- 12. EJECT button

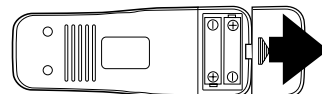
Rear Panel



- 12. AC Power Cord
- 13. AUDIO OUT jack
- 14. ANT. IN jack
- 15. VIDEO OUT jack
- 16. CH3/CH4 selector switch
- 17. ANT. OUT jack
- 18. DC13.2V (12V) supply jack
- 19. REMOTE CONTROL jack
- 20. TV REMOTE LINK jack

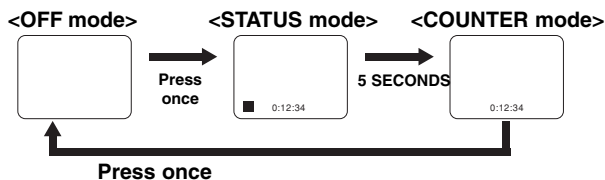
To insert the batteries

Install two AA batteries matching the polarity indicated inside the battery compartment.



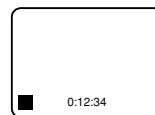
## DISPLAY

Press the display button to display the tape status, real time tape counter, and other information on the TV screen. (only on the remote control)  
Each time you press this button, TV screen will change as shown.



## STATUS DISPLAY

When you press the function buttons or turn on the VCR, the status display will appear on the TV screen for 5 seconds.



▶	PLAY MODE
◀◀	REWIND MODE
▶▶	FAST FORWARD MODE
▲	EJECT MODE
■	STOP MODE

# PREPARATION FOR USE

## 1 Check contents

Make sure the package contains all of the accessories listed in "as below".

### SUPPLIED ACCESSORIES

ACCESSORIES	PART NO.
Coaxial Cable	WPZ0901TM002
Remote Control Unit	N9378UD
Batteries	AA x 2
DC Cable	WX1H35B4-001

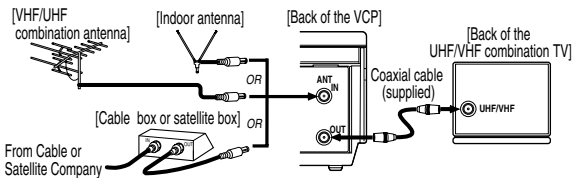
## 2 Situate VCP

Place the VCP in a stable, horizontal surface.

## 3 Connect VCP to TV

### VCP TO TV CONNECTION

1. Disconnect the AC power cord of the TV from the AC outlet.
2. Disconnect the antenna or cable from the TV.
3. Connect the antenna or cable to the ANT. IN jack of the VCP.
4. Connect the VCP to the TV using the coaxial cable.
5. Plug the AC power cords of the VCP and TV into the AC outlets.



PREPARATION FOR USE

### USING OPTIONAL AUDIO/ VIDEO OUTPUT JACKS

With this connection, you can get better pictures and sounds when playing back a tape if your TV has A/V Input jacks. Please refer to your TV's owner's manual.

### REMOTE CONTROL JACK

You can control the VCP, connect 3.5mm dia. jack of "Remote Control Sensor Wire" box (not supplied) when the VCP locates remote cargo area or behind rear seat. Instead of firing at the VCP, you can control its function by locating "Remote Control Sensor Wire" box where it is accessible to signal from remote control unit.

\*You can't use the remote sensor on the front panel of the VCP when this jack is occupied.

### TV REMOTE LINK JACK

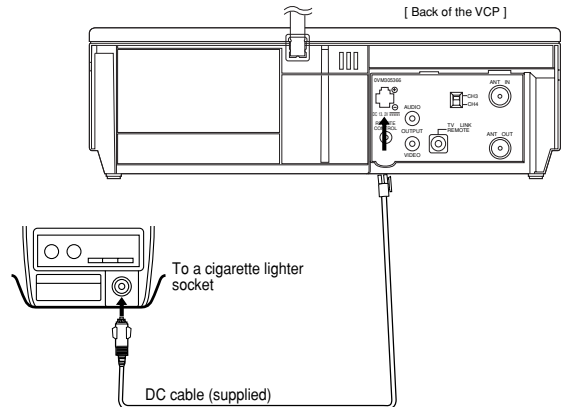
Connect the VCP to the TV (Funai TV) using the "TV Remote Link cable" (not supplied). Instead of firing at the VCP, you can control its function using remote control sensor on your TV (Funai TV).

\*You can't use the remote sensor on the front panel of VCP when this jack is occupied.

\*When you connect both REMOTE CONTROL jack and TV REMOTE LINK jack at the same time, REMOTE CONTROL jack takes precedence over the TV REMOTE LINK jack.

### USING THE DC CABLE

- 1) Connect one end of the DC cable to the 13.2 VOLT (12V) DC connector on the back of the VCP.
- 2) Connect the other end of the DC cable to your vehicle's cigarette lighter socket.



**WARNING:** The driver should never watch a video program while operating a motor vehicle.

**CAUTION:** After you finish using the VCP, unplug the DC cable from the cigarette lighter socket.

### NOTES:

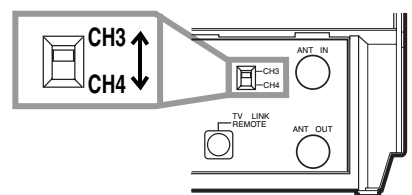
- Be sure your vehicle has a 13.2 volt (12V), negativeground electrical system.
- Be sure you use only the supplied DC cable. Using another cord could damage the VCP.
- Be sure the socket is free of ashes and other debris.
- Be sure to push the DC cable,s plug completely into the cigarette-lighter socket.
- Disconnect the DC cable from the cigarette-lighter socket first, before you unplug it from the VCP.
- You must disconnect the DC cable from the VCP before you can use AC power.

Be sure to replace the fuse on the DC cable with only the same type, 5A, 250V.

### SETTING THE CH3/CH4 SWITCH

#### If your TV does not have A/V terminals:

When the VCP is in the Playback mode, your TV will receive signals from the VCP on either channel 3 or 4. To use the VCP with your TV, set the selector switch to CH3 or CH4 (which is located in the back of your VCP), whichever is not used for normal broadcasts in your area. Then set your TV to the same channel.

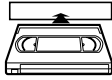


[Back of the VCP]

# PLAYBACK FUNCTION

## NORMAL PLAYBACK

- 1 **Insert the prerecorded tape.** The VCP will turn on. If the safety tab has been removed, the VCP will start playback automatically.



- 2 **Turn on the TV and set the TV to channel 3 or 4.** Now set the CH3/CH4 switch on the back of the VCP to match the channel selected on the TV.
- 3 **Begin playback by pressing [PLAY].**
  - Tracking adjustment will be set automatically (Digital Tracking function) when you start playback. To adjust the tracking manually, press [TRACKING (^/v)] on the remote control.
  - When a tape has reached the end, the VCP will rewind the tape to the beginning, eject the tape, and turn off the VCP automatically.
- 4 To stop playback, press [STOP].

## STILL

You can freeze the picture on TV screen by pressing [STILL] during playback.

- Usually there will be video "noise" lines (black and white streaks or dots) on the screen. **This is not a fault of the machine but is a by-product of the technology involved in producing a 2 Head VCP.** Only a tape recorded in the SLP mode will show a clear picture. You can change position of the noise lines on a still picture by pressing [STILL] repeatedly.
- After the VCP has been in Still mode for 5 minutes, it will stop automatically to protect the tape and the video head.
- To return playback, press [PLAY].

## AUTO REPEAT PLAYBACK

This feature allows you to play a tape over and over.

- 1 **Press the AUTO REPEAT button. THE AUTO REPEAT indicator lits.**

To cancel the auto repeat mode, press the AUTO REPEAT button again. The AUTO REPEAT indicator goes off.

## PICTURE SEARCH

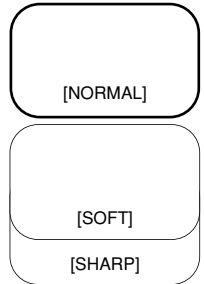
If you want to skip or repeat a scene during playback, press [F.FWD] or [REW].

- Press it again and the VCP will now search in super high speed. (in the LP/SLP modes only)

## PICTURE SELECT

This function enables you to improve the picture quality when playing back worn cassettes such as rented tapes.

- 1 **Turn on the TV.** Turn on the TV and set the TV channel to 3 or 4. Now set the CH3/CH4 switch on the back of the VCP to match the channel selected on the TV.
- 2 **Insert a prerecorded tape.** The VCP will automatically turn on and playback will start. If playback does not start, press the PLAY button.
- 3 **To set PICTURE SELECT.** Press the PICTURE SELECT button repeatedly to select NORMAL or SOFT or SHARP. You can see the current setting on the display.
- 4 **To stop playback.** Press the STOP button.



## AUTO REWIND

When a tape has reached the end during playback or fast-forward, the tape will automatically rewind to the beginning. After rewinding finishes, the VCP will eject the tape and turn itself to off.

- This function is operative when Auto Repeat Playback is set to off.

# TROUBLESHOOTING GUIDE

If you have followed the instructions contained in this manual and have difficulty in operating your VCP, locate the PROBLEM in the left column below. Check the corresponding CORRECTIVE ACTION column to remedy the problem.

PROBLEM	CORRECTIVE ACTION
No power.	<ul style="list-style-type: none"> <li>• Make sure the power plug is connected to an AC outlet.</li> <li>• Make sure the DC cord is connected to a 13.2 VOLT (12V) DC cigarette lighter socket. Check the fuse on the DC cord.</li> <li>• Make sure the power is turned on.</li> </ul>
Playback picture is partially noisy.	<ul style="list-style-type: none"> <li>• Adjust tracking control for a better picture by pressing [TRACKING ▲/▼].</li> </ul>
Cannot view a tape but the audio is OK.	<ul style="list-style-type: none"> <li>• Head cleaning may be necessary. Refer to "AUTO HEAD CLEANING" .</li> <li>• Make sure the VCP is not in the Menu mode.</li> </ul>
No or poor playback picture.	<ul style="list-style-type: none"> <li>• Fine tune your TV.</li> </ul>
TV programs cannot be seen normally.	<ul style="list-style-type: none"> <li>• Re-check the ANT. IN and ANT. OUT connections.</li> <li>• Turn off the VCP.</li> </ul>
No VCP operation from the infrared Remote Control.	<ul style="list-style-type: none"> <li>• Make sure the power plug is connected to an AC outlet.</li> <li>• Make sure the DC cord is connected to a 13.2 VOLT (12V) DC cigarette lighter socket. Check the fuse on the DC cord.</li> <li>• Check batteries in remote control.</li> </ul>
Noise in picture on playback.	<ul style="list-style-type: none"> <li>• Head cleaning is necessary. Refer to "AUTO HEAD CLEANING".</li> </ul>

## SPECIFICATIONS

Operating temperature :	5°C~40°C (41°F~104°F)	Power requirement :	AC120V, 60Hz DC13.2V (12V)
Converter output :	VHF Channel 3 or 4.	Power consumption :	AC12W DC10W
		Dimensions :	W 11" (280mm) H 3-5/8" (92mm) D 9-13/16" (250mm)
		Weight :	4.4 lbs. (2.0 Kg.) (approx.)

- Designs and specifications are subject to change without notice and legal obligation.
- If there is a discrepancy between languages, the default language will be English.

## MAINTENANCE

### SERVICING

Should your VCP become inoperative, do not try to correct the problem by yourself. There are no user-serviceable parts inside. Turn off, unplug the power plug, and please call our help line at

1-800-242-7158,

to locate an Authorized Service Center.

### CABINET CLEANING

- Wipe the front panel and other exterior surfaces of the VCP with a soft cloth immersed in lukewarm water and wrung dry.
- Never use a solvent or alcohol. Do not spray insecticide liquid near the VCP. Such chemicals may cause damage and discoloration to the exposed surfaces.

### AUTO HEAD CLEANING

- Automatically cleans video heads as you insert or remove a cassette, so you can see a clear picture.
- Playback picture may become blurred or interrupted while the TV program reception is clear. Dirt accumulated on the video heads after long periods of use, or the usage of rental or worn tapes can cause this problem. If a streaky or snowy picture appears during playback, the video heads in your VCP may need to be cleaned.

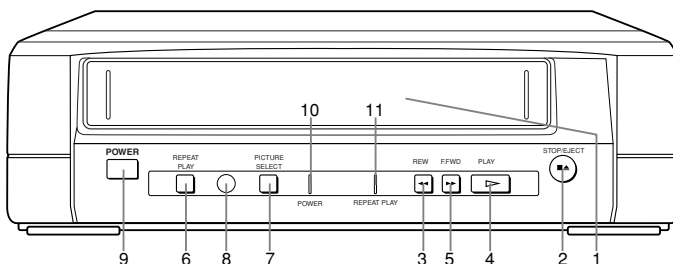
1. Please visit your local Audio/Video store and purchase a good quality VHS Video Head Cleaner.
2. If a Video Head Cleaner does not solve the problem, please call our help line at 1-800-242-7158, to locate an Authorized Service Center.

#### NOTES:

- Remember to read the instructions included with the video head cleaner before use.
- Clean video heads only when problems occur.

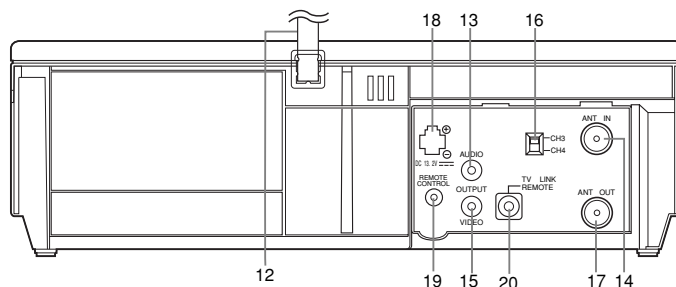


## Panel frontal



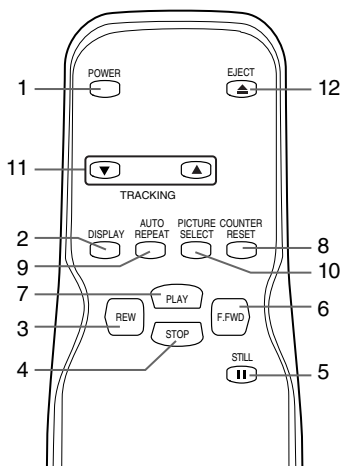
- |  |   |
|--|---|
| 1. Compartimiento del videocasete      | 7. Botón selector para cintas de alquiler         |
| 2. Botón de parada/expulsión           | 8. Ventana sensora de la unidad de control remoto |
| 3. Botón de rebobinado                 | 9. Botón de la alimentación                       |
| 4. Botón de reproducción               | 10. Indicadores de alimentación                   |
| 5. Botón de avance rápido              | 11. Indicadores de repetición de automática       |
| 6. Botón de reproducción de repetición |   |

## Panel trasero



- |  |   |
|--|---|
| 12. Cable de alimentación                  | 17. Terminal de salida de antena                |
| 13. Terminal de salida de audio            | 18. Conector de CC                              |
| 14. Terminal de entrada de antena          | 19. Conector de Control Remoto (REMOTE CONTROL) |
| 15. Terminal de salida de vídeo            | 20. Conector de REMOTE (TV REMOTE LINK)         |
| 16. Conmutador selector de canales CH3/CH4 |   |

## Mando a distancia



- |   |                                |
|---|--------------------------------|
| 1. Botón de la alimentación (POWER)                         | 12. Botón de expulsión (EJECT) |
| 2. Botón de visualizador (DISPLAY)                          |                                |
| 3. Botón de rebobinado (REW)                                |                                |
| 4. Botón de parada (STOP)                                   |                                |
| 5. Botón de imagen fija (STILL)                             |                                |
| 6. Botón de avance rápido (F.FWD)                           |                                |
| 7. Botón de reproducción (PLAY)                             |                                |
| 8. Botón de reposición del contador (COUNTER RESET)         |                                |
| 9. Botón de repetición automática (AUTO REPEAT)             |                                |
| 10. Botón selector para cintas de alquiler (PICTURE SELECT) |                                |
| 11. Botones de seguimiento (TRACKING)                       |                                |
| 12. Botón de expulsión (EJECT)                              |                                |

## FUNAI CORPORATION LIMITED WARRANTY

Funai Corporation will exchange or repair this product, at its option, in the event of defect in materials or workmanship as follows:

### EXCHANGE DURATION:

**1-90 DAYS:** FUNAI CORPORATION will exchange for a new unit without charge for a period of ninety (90) days from the date of original retail purchase.

**91-365 DAYS:** FUNAI CORPORATION will exchange for a factory-service-to-new-condition unit for a charge of \$49.00 for the period of ninety one (91) days to three hundred sixty five (365) days from the date of original retail purchase.

### REPAIR DURATION:

**LABOR:** FUNAI CORPORATION will provide the labor without charge for a period of ninety (90) days from the date of original retail purchase.

**PARTS:** FUNAI CORPORATION will provide parts to replace defective parts without charge for a period of one (1) year from the date of original retail purchase. Two (2) years for Picture Tube. Certain parts are excluded from this warranty.

### LIMITS AND EXCLUSIONS:

This warranty is extended only to the original retail purchaser. A purchase receipt or other proof of original retail purchase will be required together with the product to obtain exchange or service under this warranty.

This warranty shall not be extended to any other person or transferee. This warranty is void and of no effect if any serial numbers on the product are altered, replaced, defaced or missing. This FUNAI CORPORATION Limited warranty applies only to product purchased and used in the United States.

This warranty only covers failures due to defects in material or workmanship, which occur during normal use. It does not cover damage which occurs in shipment, or failures which are caused by repairs, alterations, or parts not supplied by FUNAI CORPORATION, or damage which results from accident, misuse, abuse, mishandling, misapplication, alteration, faulty installation, improper maintenance, commercial use such as hotel, rental or office use of this product, or damage which results from fire, flood, lightning or other acts of God.

THIS WARRANTY DOES NOT COVER PACKING MATERIALS, ANY ACCESSORIES (EXCEPT REMOTE CONTROL UNITS), ANY COSMETIC PARTS, COMPLETE ASSEMBLY PARTS, DEMONSTRATION OR FLOOR MODELS.

FUNAI CORPORATION AND ITS REPRESENTATIVES OR AGENTS SHALL IN NO EVENT BE LIABLE FOR ANY GENERAL, INDIRECT OR CONSEQUENTIAL DAMAGES ARISING OUT OF OR OCCASIONED BY THE USE OF OR THE INABILITY TO USE THIS PRODUCT. THIS WARRANTY IS MADE IN LIEU OF ALL OTHER WARRANTIES INCLUDING THE WARRANTY OF MERCHANTABILITY, AND FITNESS FOR A PARTICULAR PURPOSE, THAT ARE HEREBY DISCLAIMED BY FUNAI CORPORATION AND ITS REPRESENTATIVES OR AGENTS IN THE UNITED STATES.

ALL WARRANTY INSPECTIONS AND REPAIRS MUST BE PERFORMED BY A FUNAI AUTHORIZED CENTER. THIS WARRANTY IS VALID WHEN THE PRODUCT IS DELIVERED PREPAID TO A FUNAI AUTHORIZED SERVICE FACILITY.

### IMPORTANT:

THIS LIMITED WARRANTY GIVES YOU SPECIFIC LEGAL RIGHTS, YOU MAY HAVE OTHER RIGHTS THAT VARY FROM STATE TO STATE. IF AT ANY TIME DURING THE WARRANTY PERIOD YOU ARE UNABLE TO OBTAIN SATISFACTION WITH THE EXCHANGE OR REPAIR OF THIS PRODUCT, PLEASE CONTACT FUNAI CORPORATION.

### ATTENTION:

FUNAI CORPORATION RESERVES THE RIGHT TO MODIFY ANY DESIGN OF THIS PRODUCT WITHOUT PRIOR NOTICE.

For information about your product, or for information on how to exchange or repair your product, telephone or write to the following:

### FUNAI CORPORATION

Customer Service  
100 North Street; Teterboro, NJ 07608

Telephone (800)242-7158

PLEASE DO NOT SHIP YOUR UNIT TO THE TETERBORO ADDRESS.



## Free Manuals Download Website

<http://myh66.com>

<http://usermanuals.us>

<http://www.somanuals.com>

<http://www.4manuals.cc>

<http://www.manual-lib.com>

<http://www.404manual.com>

<http://www.luxmanual.com>

<http://aubethermostatmanual.com>

Golf course search by state

<http://golfingnear.com>

Email search by domain

<http://emailbydomain.com>

Auto manuals search

<http://auto.somanuals.com>

TV manuals search

<http://tv.somanuals.com>