

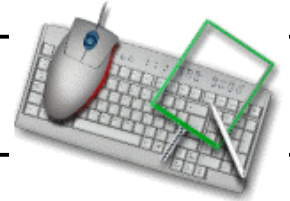


With our products we always look to the future.

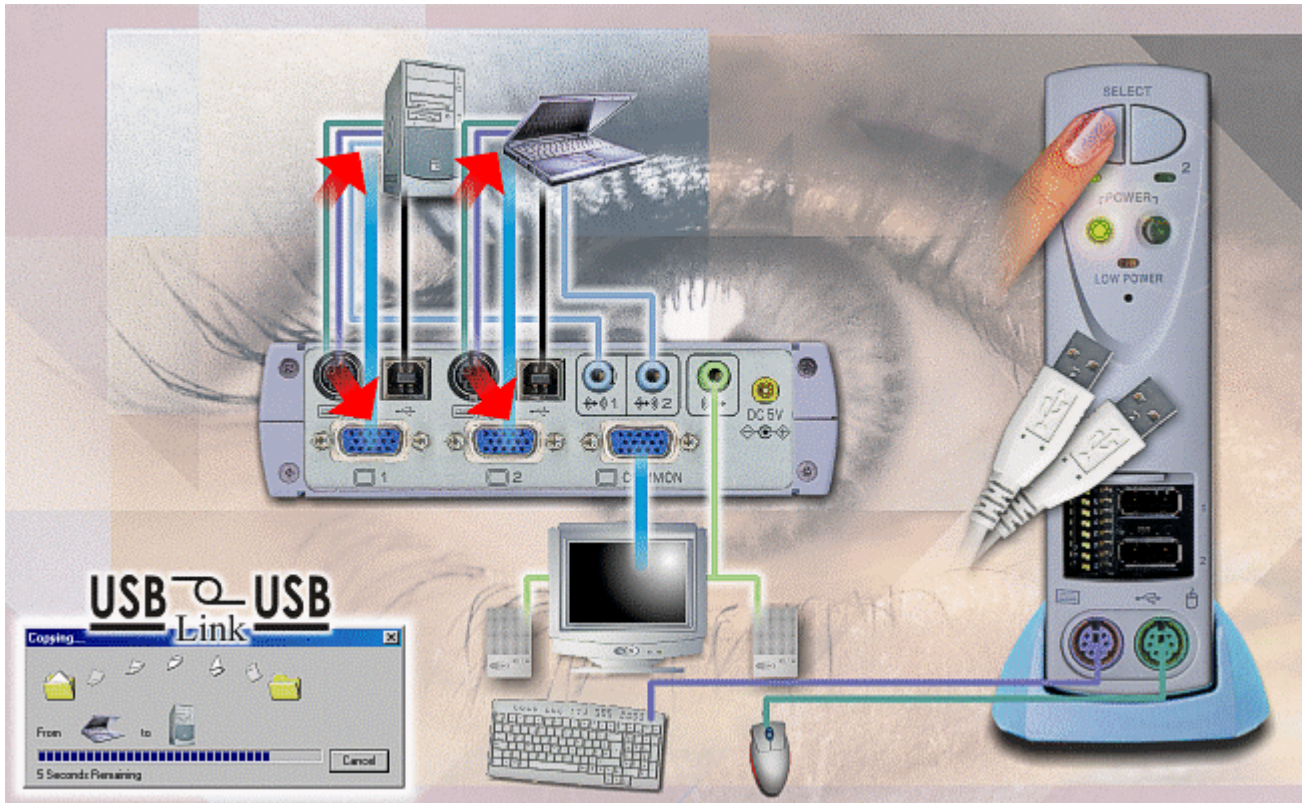
www.fceu.fujitsu.com

SERVISTM
Server Intelligent Switch

KVM FS-102ATL



**KVM - Keyboard Video Mouse Switch, 2 Ports with USB Link.
PC / USB KVM with Multimedia Audio routing and USB Link**



■ KVM Switches – What are the advantages?

Where desk space is at a premium and where multiple systems need to be used at once, this KVM switch through its multi processor design ensures the seamless stable switching operation between the attached systems. The 102ATL also switches the multi-media Audio signals from the attached systems. More importantly the fact that both systems are connected via their USB ports means that a **USB-Link** can be set-up between the two systems. This means sharing printers, DVD drives or CD-ROMs and tape backup systems is simple. The link allows file sharing, copying and system backups to be done at high speed across the USB cables. Other examples are where files from a DVD ROM drive on a desktop system can be shared by a notebook and visa versa. In fact the possibilities are infinite.



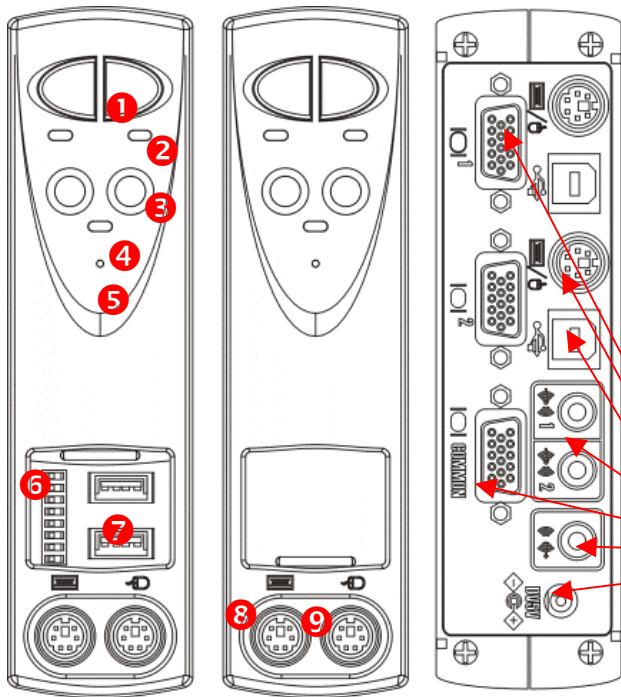
When switching between two systems, the user has the choice of **Hot Keys** (Where configurable keys on the host keyboard that can be dedicated to the switching operation, for example pressing the (Control) key twice), or **Front Mounted Buttons**.



The KVM also switches the Analogue Audio signals between the systems!



FEATURES



Major Front Face Functions:-

- 1 Select switch(s) used to select each PC connected to the switch
- 2 Selection LED, which is lit when a certain PC is selected.
- 3 POWER LED, lit when a PC is connected
- 4 Low Power LED. If the keyboards you are using take more power than expected and the KVM switch needs more, this will light and an external cable is required. (The KVM will self power if only PS/2 connections are made. Any USB connections will require power)
- 5 RESET. In the unlikely event of an error or lock up the KVM is reset.
- 6 DIP switch, used to select the required 'hot key' for switching
- 7 Shared USB ports for peripheral equipment (Cameras etc).
- 8 PS/2 Keyboard connector
- 9 PS/2 Mouse connector

Major Rear Face Functions:-

- Monitor connector to the PC
- Keyboard/mouse connector for dedicated cable from the KVM to the PC
- USB connector to the host PC
- Audio in sockets for connection to the host PC's
- Common Monitor cable to connect the KVM to the Monitor
- Audio out, connected to PC speakers
- DC 5V adapter input.

SPECIFICATION DETAILS

Item	Specification
Console Ports	2x 6 Pin Mini-Din female Mouse/Keyboard ports, (front), D-SUB 15 pin female monitor port (rear)
PC Ports	2 x 6 Pin Mini-Din female Mouse/Keyboard ports, 2 x D-SUB 15 pin female monitor ports
Additional Ports	2 Series B female USB ports
Front Hub ports	2 Series 'A' female ports at 500mA per port
Monitor Resolution/Bandwidth	1600 x 1200 200MHz
Power Supply	DC +5V ±5% (Supplied via the Mouse and keyboard port of the host PC for PS/2 only connection)
External Power Supply	DC +5V ±5% (Supplied via the external DC adapter)
Current Consumption	100mA Max.
Operating Temperature	0°C ~ 40°C
Storage Temperature	-20°C ~ 60° C
Dimensions & Weight	148mm (W) x 115mm (D) x 39.6mm(Height), 380g

NOTES

KVMs and related products should not be used for the control of extremely hazardous processes, like nuclear reactors, or patient monitoring systems. In the event of a decision to use the products in these areas, the customer/distributor assumes the responsibility for the decision. Always read the manual and do not use in areas of high dirt, water or condensation.

The SERVIS logo is a trademark of Fujitsu Component Limited and all other trademarks are the property of their respective owners.

Free Manuals Download Website

<http://myh66.com>

<http://usermanuals.us>

<http://www.somanuals.com>

<http://www.4manuals.cc>

<http://www.manual-lib.com>

<http://www.404manual.com>

<http://www.luxmanual.com>

<http://aubethermostatmanual.com>

Golf course search by state

<http://golfingnear.com>

Email search by domain

<http://emailbydomain.com>

Auto manuals search

<http://auto.somanuals.com>

TV manuals search

<http://tv.somanuals.com>