



MULTI FUNCTION DISPLAY



MFD8/MFD12/MFDDB

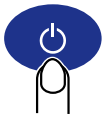


Operator's Guide

The purpose of this Operator's Guide is to provide basic operating procedures for this equipment. For more detailed information see the Operator's Manual.

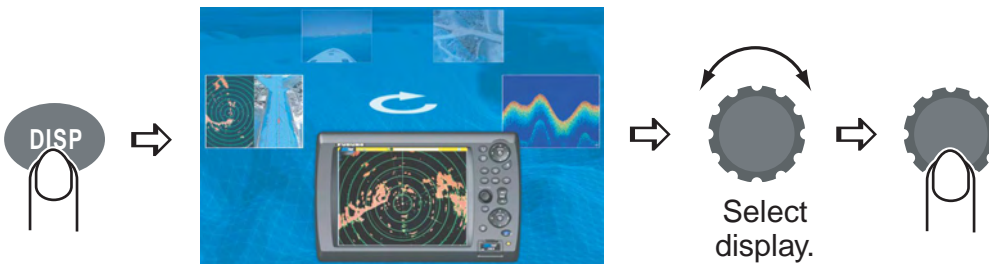
General

Power on/off



ON: Momentary push
OFF: Long push (3 sec.)

Selecting a display



Selecting a range



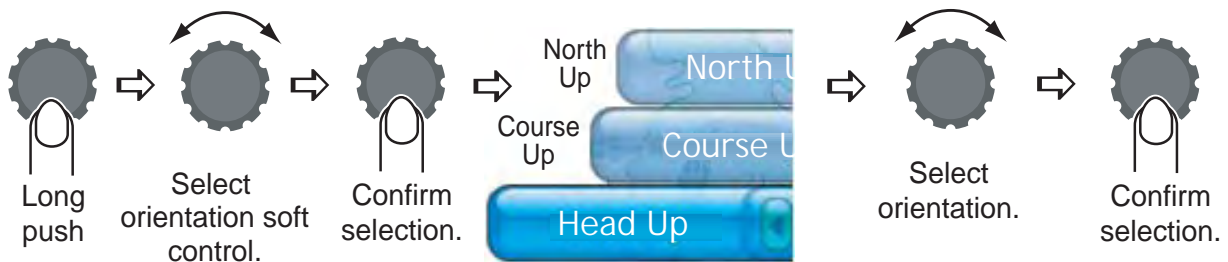
- Press **RANGE OUT** to increase the range.
- Press **RANGE IN** to decrease the range.

Scrolling the chart, radar picture



Press arrow or diagonal to scroll chart, radar picture. To re-center own ship, push **SHIP/3D** button.

Chart, radar orientation



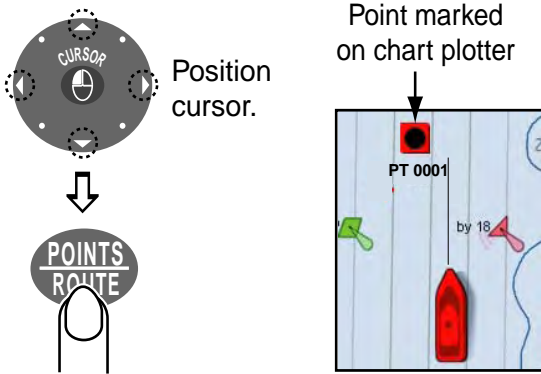
FURUNO ELECTRIC CO., LTD.

www.furuno.co.jp

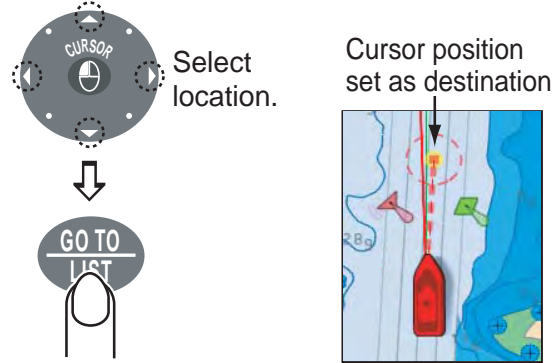


Chart Plotter

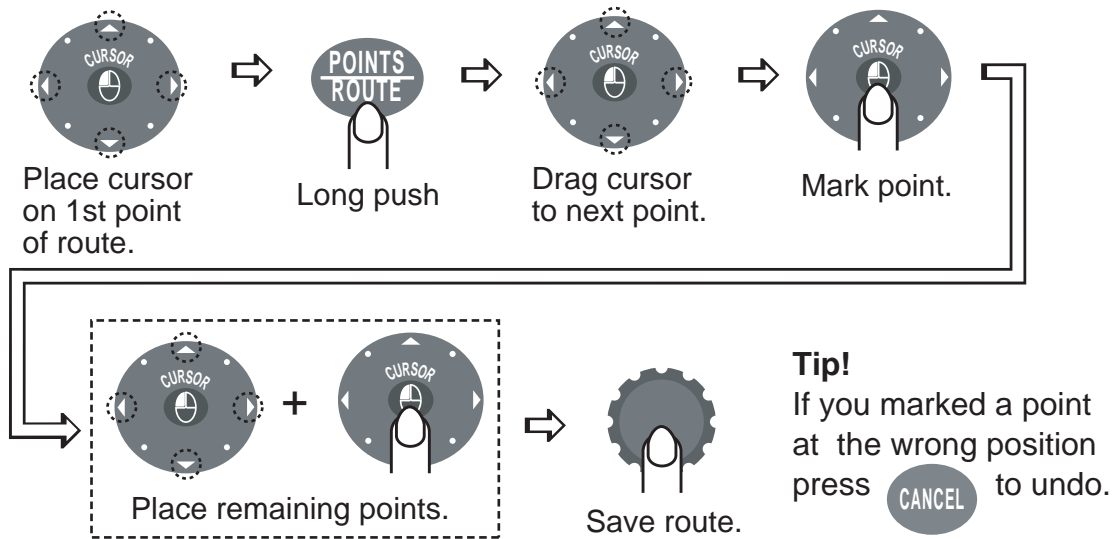
Placing a point at cursor location



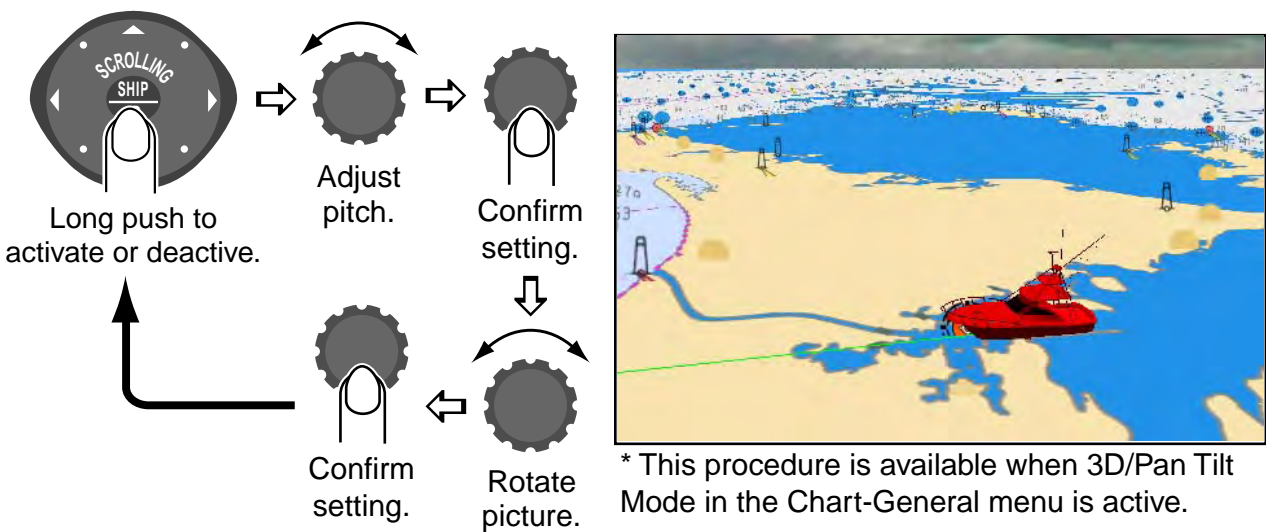
Going to cursor position



Creating a route

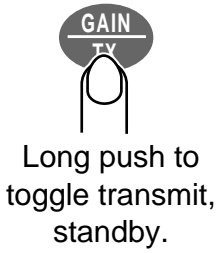


3D display

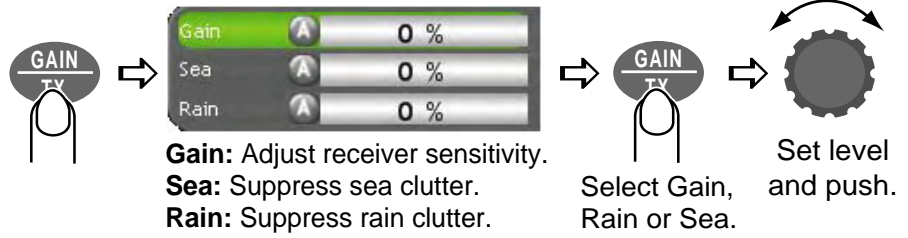


Radar

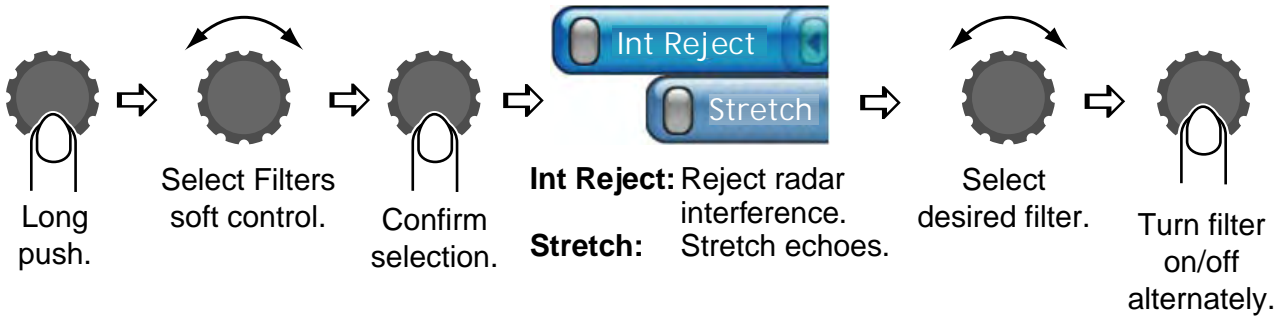
Toggling TX, STBY



Adjusting gain, and rain and sea clutters

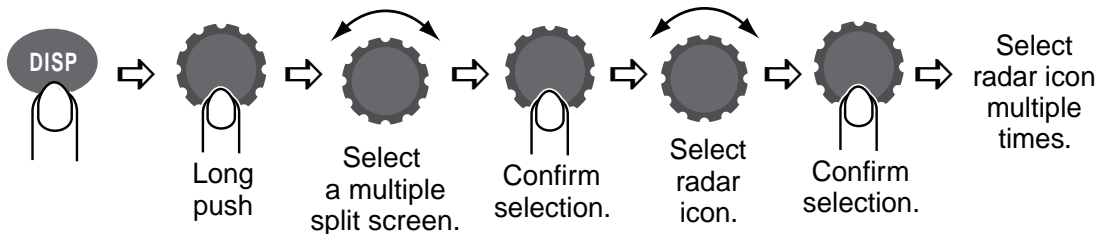


Suppressing interference, stretching echoes



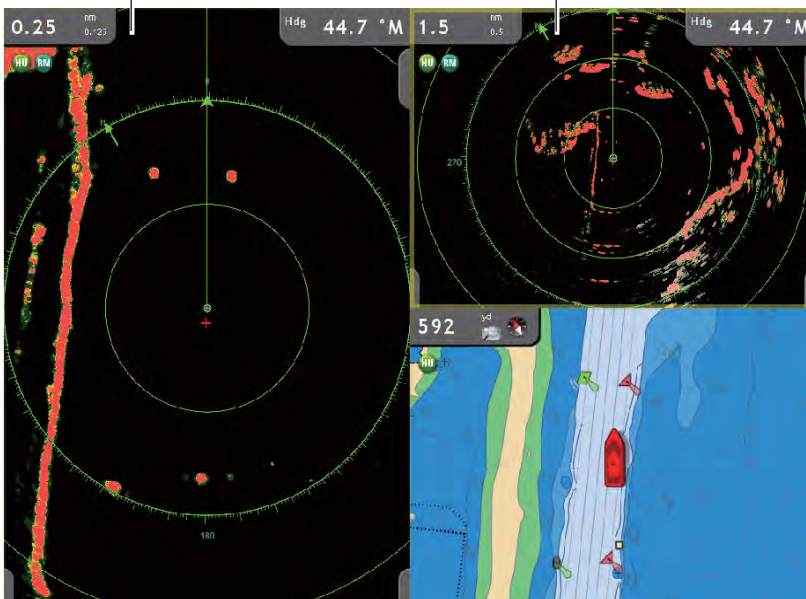
Dual range display

The dual range display offers both short and long range pictures simultaneously.



Close-range display (0.25 nm)

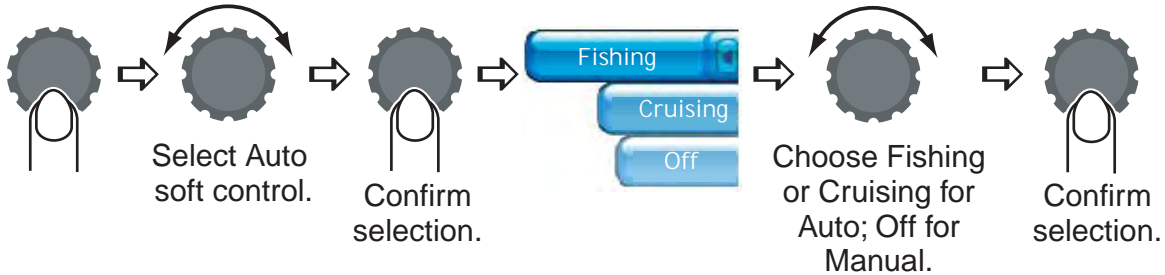
Longer range display (1.5 nm)



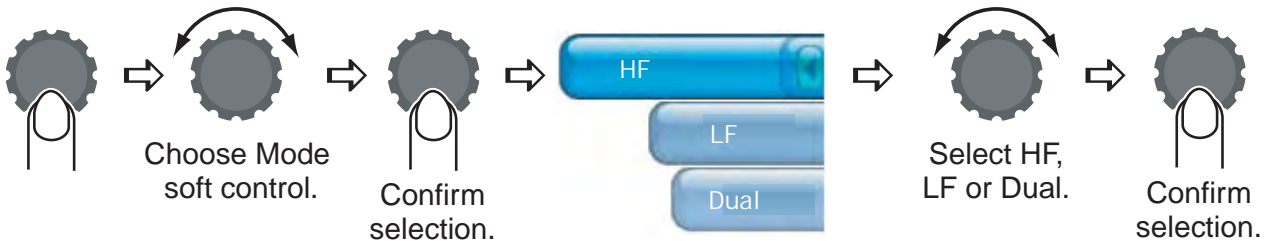
Fish Finder

Selecting operating mode

Your fish finder can be operated automatically or manually. In automatic operation, gain, clutter, TVG, echo offset and range* are automatically adjusted. (*: For ETR-6/10/30).

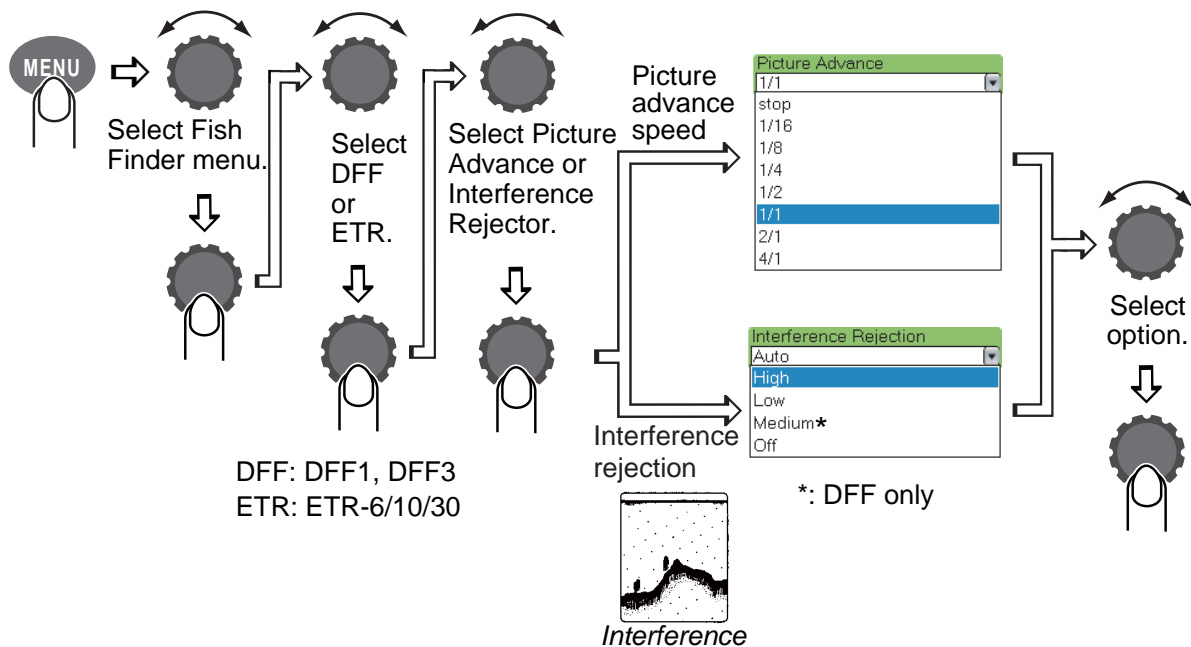


Selecting operating frequency



Picture advance speed, interference rejection

The picture advance speed determines how fast echoes are scrolled across the screen. Turn on the interference rejector when interference appears on the screen.





Le présent guide d'utilisation a pour objectif d'expliquer les procédures d'utilisation de base de cet équipement. Pour obtenir des informations plus détaillées, reportez-vous au manuel d'utilisation.

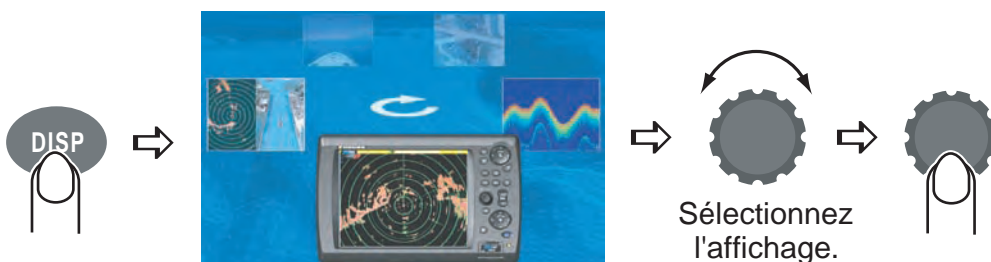
Généralités

Mise en marche/arrêt



MARCHE : appui bref
ARRET : appui prolongé (3 s.)

Sélection d'un affichage



Sélection d'une échelle



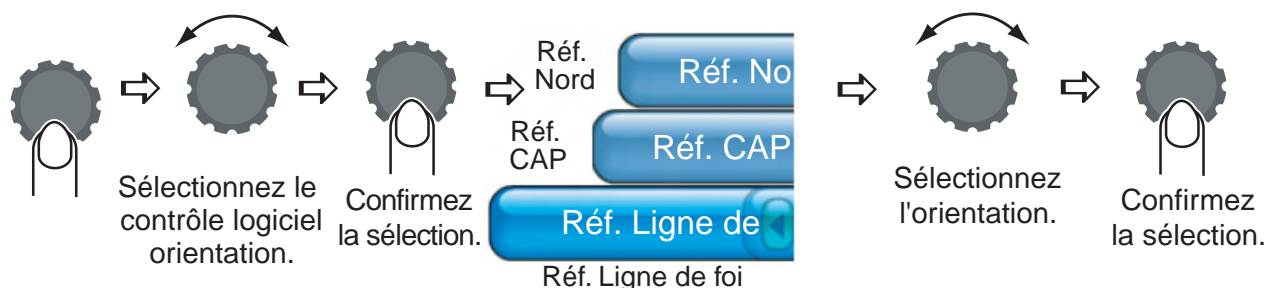
- Appuyez sur **RANGE OUT** pour augmenter l'échelle.
- Appuyez sur **RANGE IN** pour réduire l'échelle.

Défilement de la carte, de l'image radar



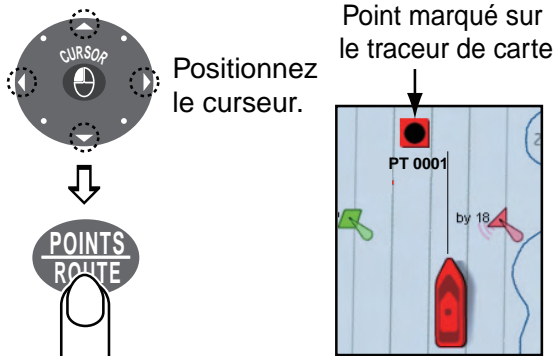
Appuyez sur une flèche ou une diagonale pour faire défiler la carte ou l'image radar. Appuyez sur le bouton **SHIP/3D** pour recentrer la position du bateau.

Orientation de la carte ou de l'image radar

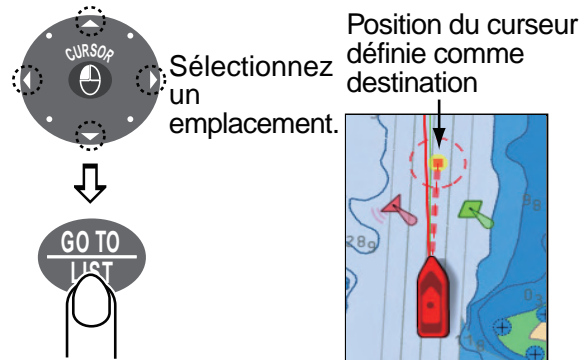


Traceur de carte

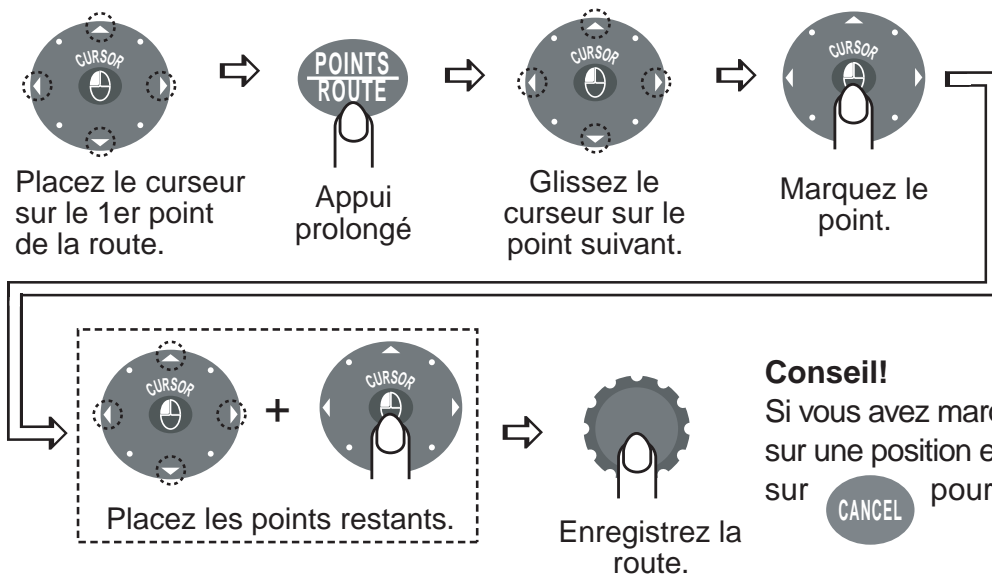
Placement d'un point à l'emplacement du curseur



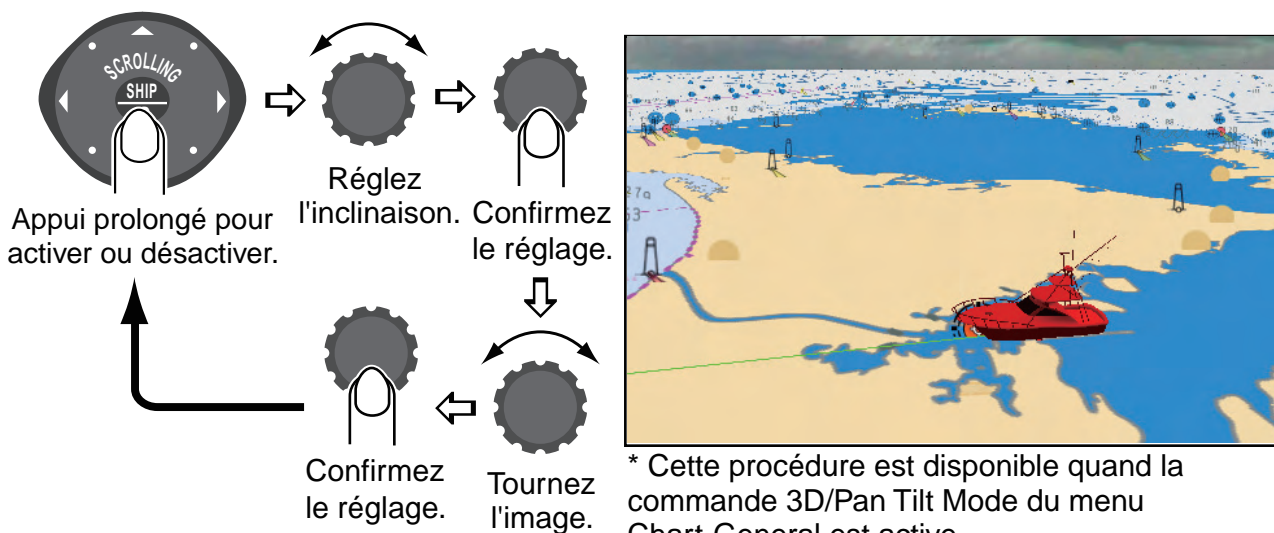
Aller à la position du curseur



Création d'une route




Affichage 3D


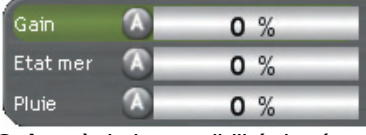




Radar



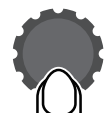



Permutation TX, STBY


Appui prolongé pour permuter les modes transmission et veille.

Réglage du gain et des échos de la pluie et des vagues



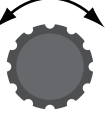
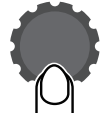
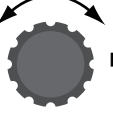

 ⇒  ⇒  ⇒ 
Gain : règle la sensibilité du récepteur.
Etat mer : supprime l'écho des vagues.
Pluie : supprime l'écho de la pluie.
 Sélectionnez Gain, Pluie ou Etatmer. Réglez le niveau et appuyez.

Suppression des interférences et amplification des échos

 ⇒  ⇒  ⇒  ⇒  ⇒ 
 Appui prolongé. Sélectionnez le contrôle logiciel Filtrés. Confirmez la sélection.
Reject. Interférence : supprime les interférences radar.
Grossi : amplifie les échos.
 Sélectionnez le filtre désiré. Activez/désactivez le filtre (alternativement).

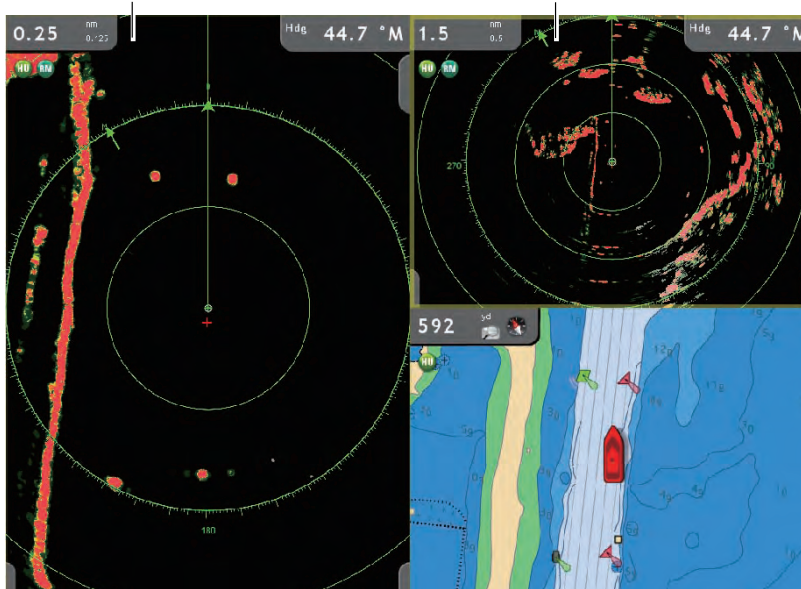
Affichage double échelle

L'affichage double échelle permet de montrer simultanément les images dans les modes longue et courte échelle.

 ⇒  ⇒  ⇒  ⇒  ⇒  ⇒ Sélectionnez l'icône radar plusieurs fois.
 Appui prolongé. Sélectionnez un écran à affichage multiple. Confirmez la sélection. Sélectionnez une icône radar. Confirmez la sélection.

Affichage à courte échelle (0,25 nm)

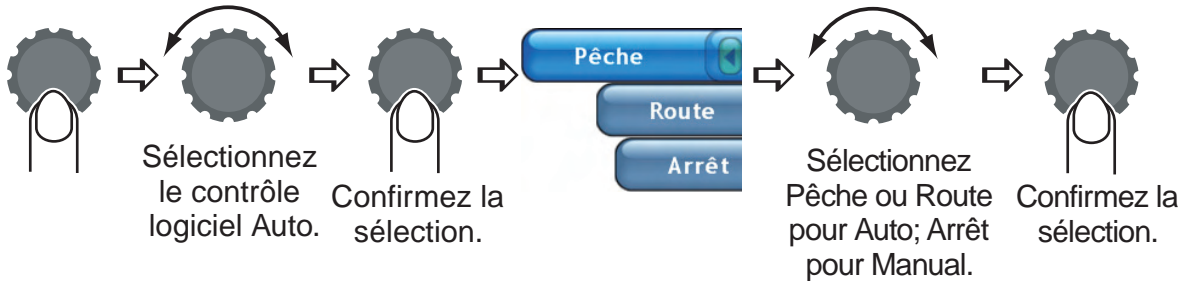
Affichage longue échelle (2 nm)



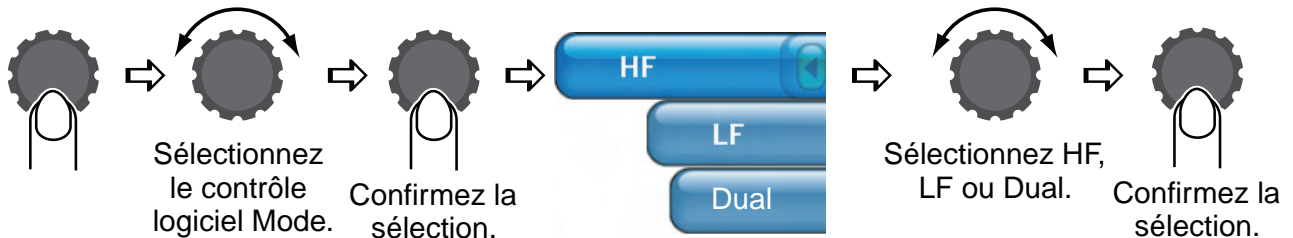
SONDEUR

Sélection du mode de fonctionnement

Votre SONDEUR peut fonctionner automatiquement ou manuellement. En mode automatique, la distance, le gain et les échos sont réglés automatiquement.

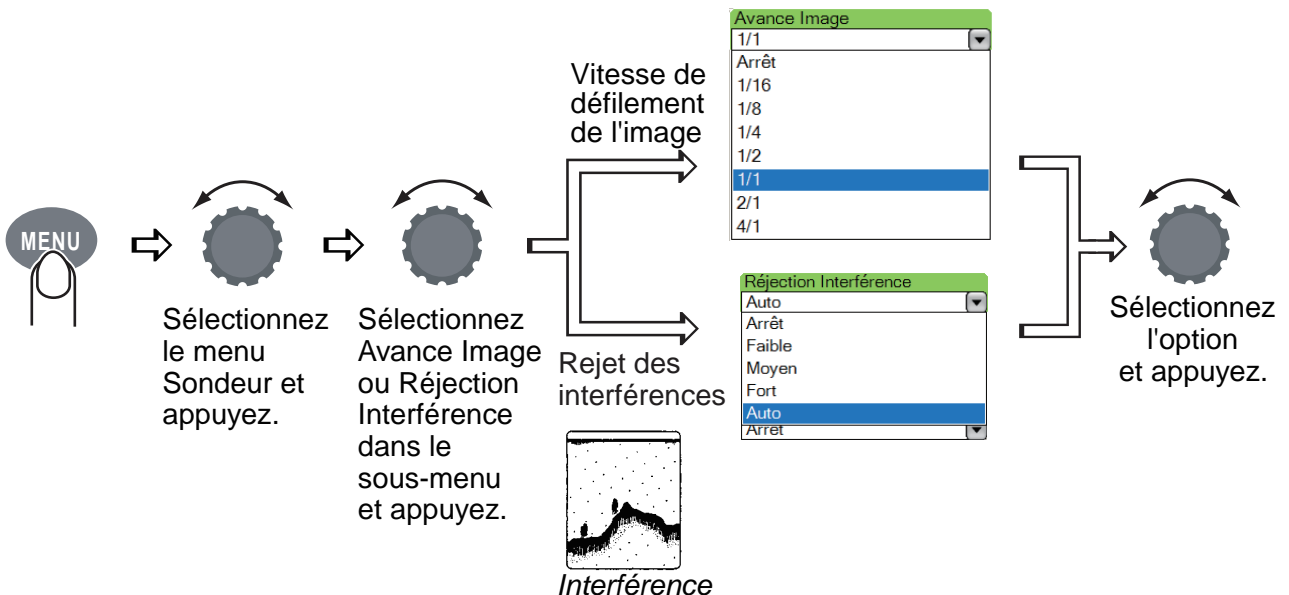


Sélection de la fréquence de fonctionnement



Vitesse de défilement de l'image, suppression des interférences

La vitesse de défilement de l'image détermine la rapidité du défilement des échos sur l'écran. Activez la suppression des interférences lorsque ces dernières apparaissent sur l'écran.





El propósito de esta Guía del operador es proporcionar los procedimientos básicos de utilización de este equipo. Para obtener información más detallada, consulte el Manual del operador.

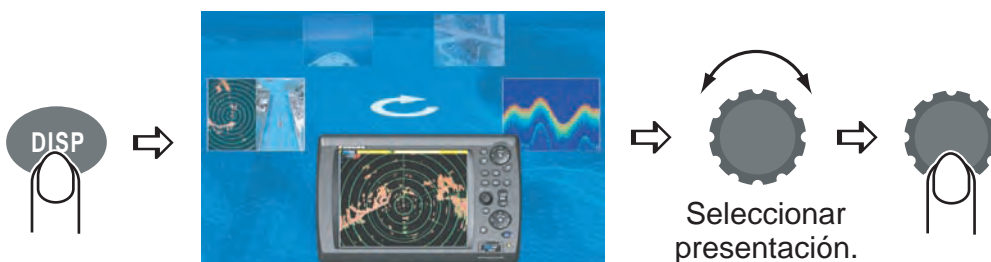
Generalidades

Encendido y apagado



ON: Pulsación breve
OFF: Pulsación larga (3 seg)

Selección de presentación



Selección de escala



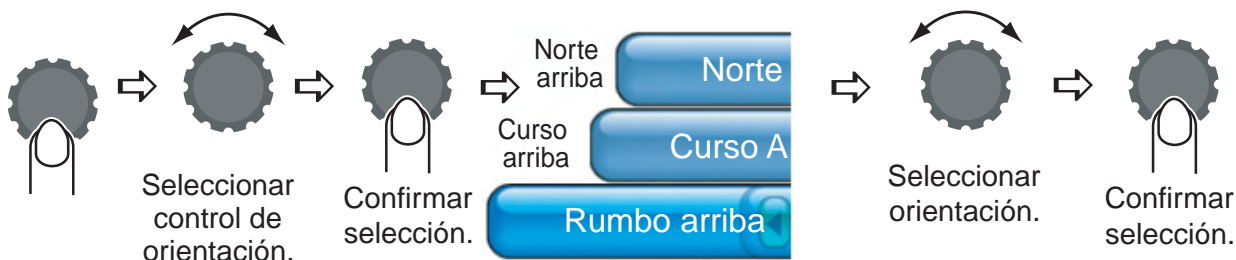
- Pulse **RANGE OUT** para aumentar la escala.
- Pulse **RANGE IN** disminuir la escala.

Desplazamiento en la carta, imagen del radar



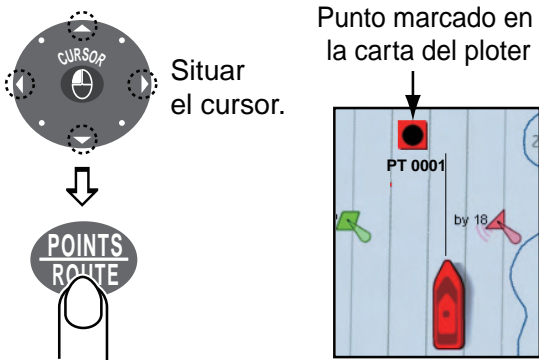
Pulse la flecha o diagonal para desplazarse por la carta, imagen del radar. Para volver a centrar el barco propio, pulse el botón **SHIP/3D**.

Carta, orientación del radar

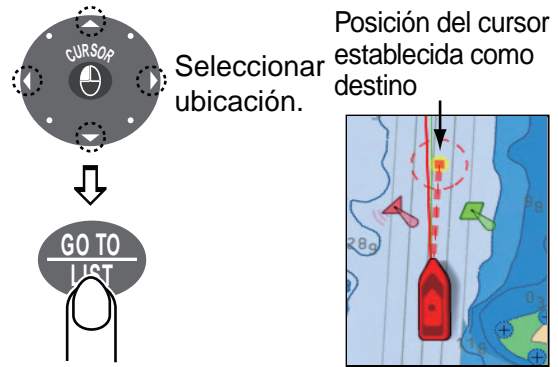


Plóter de la carta

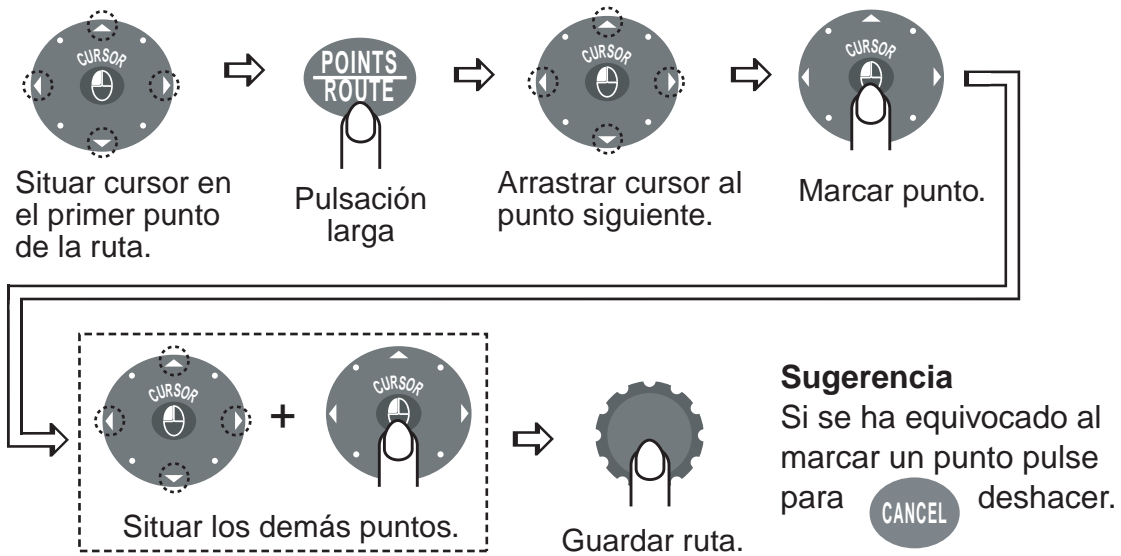
Ubicación de un punto en la posición del cursor



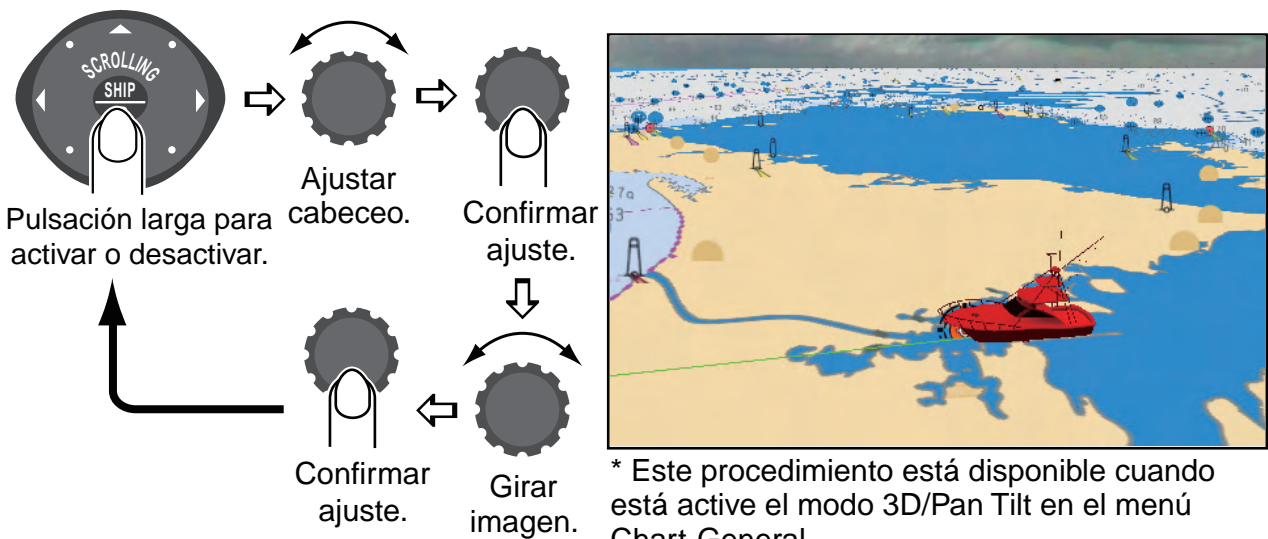
Ir a la posición del cursor



Creación de una ruta



Presentación 3D


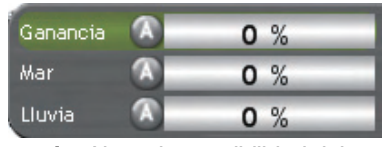

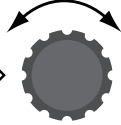


Radar

Conmutar TX, STBY


Pulsación larga para conmutar transmisión y espera.







Ajuste de ganancia y de ecos parásitos de mar y lluvia

 ⇒  ⇒  ⇒  ⇒ Ajustar nivel y pulsar.

Ganancia: Ajusta la sensibilidad del receptor.
Mar: Suprime los ecos parásitos del mar.
Lluvia: Suprime los ecos parásitos de la lluvia.

Seleccione Ganancia, Lluvia o Mar.

Supresión de interferencias, intensificación de ecos

 ⇒  ⇒  ⇒  ⇒  ⇒  ⇒ Activar/desactivar filtro.







Pulsación larga. Seleccionar control Filtros. Confirmar selección.

Rechazo de interferencias: supresor de interferencias.
Estimar: Intensifica los ecos.

Seleccionar filtro deseado. Activar/desactivar filtro.

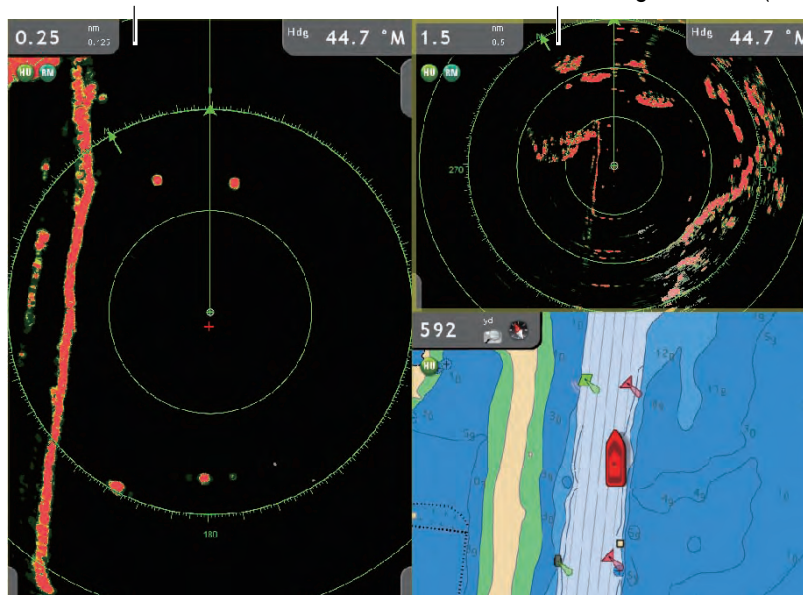
Presentación de frecuencia doble

Esta presentación ofrece imágenes de corta y larga distancia simultáneamente.

 ⇒  ⇒  ⇒  ⇒  ⇒  ⇒ Seleccione el icono de radar varias veces.

Pulsación larga. Seleccionar pantalla múltiple. Confirmar selección. Seleccionar icono de radar. Confirmar selección.

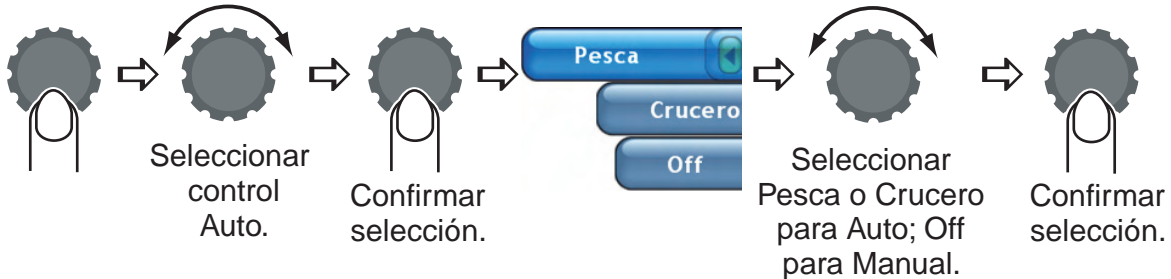
Presentación de corta distancia (0,25 nm) Presentación de larga distancia (2 nm)



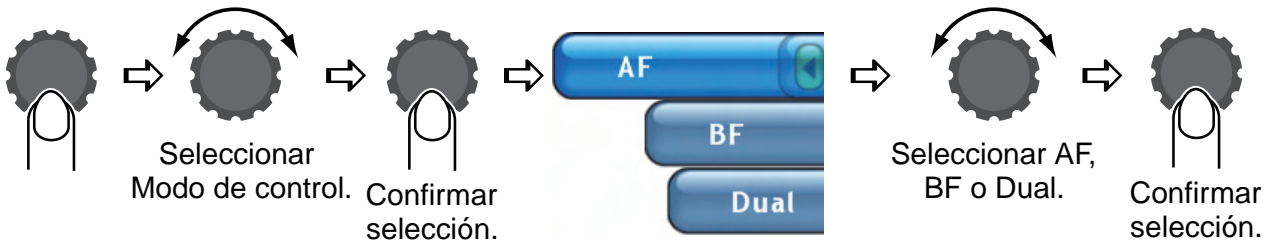
Sonda

Selección del modo de funcionamiento

Sonda puede funcionar en modo automático o manual. En modo automático se ajustan la escala, la ganancia y los ecos parásitos automáticamente.

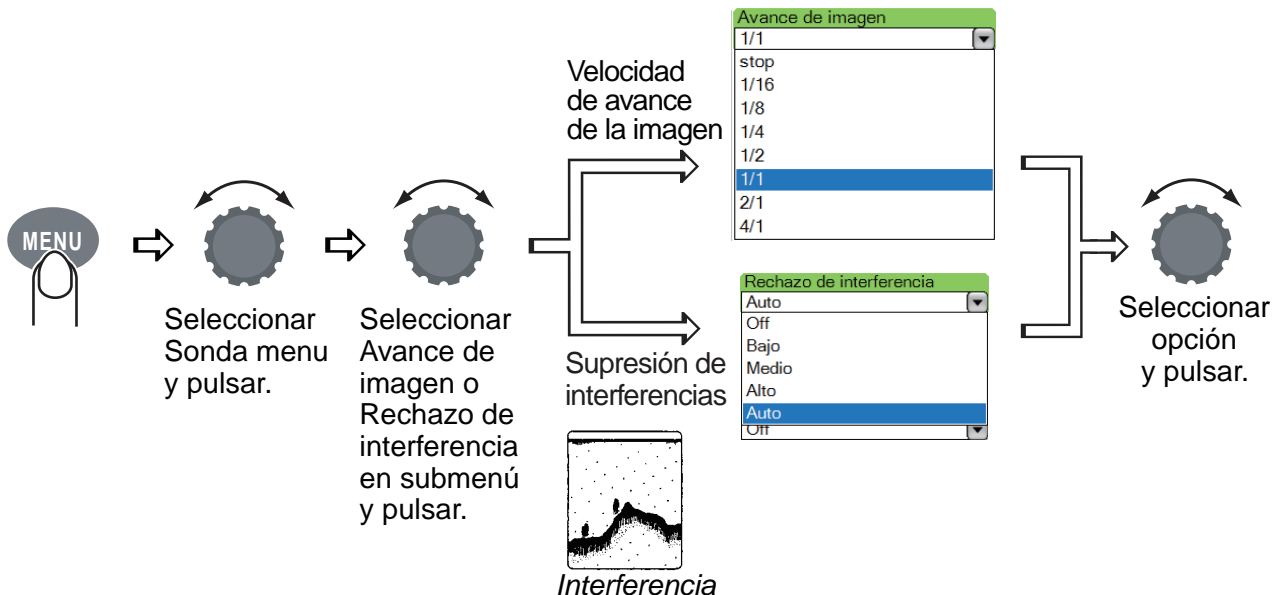


Selección de la frecuencia operativa



Velocidad de avance de la imagen, supresión de interferencias

La velocidad de avance de la imagen determina la velocidad a la que se desplazan los ecos por la pantalla. Active el supresor de interferencias cuando éstas aparezcan en la pantalla.



Free Manuals Download Website

<http://myh66.com>

<http://usermanuals.us>

<http://www.somanuals.com>

<http://www.4manuals.cc>

<http://www.manual-lib.com>

<http://www.404manual.com>

<http://www.luxmanual.com>

<http://aubethermostatmanual.com>

Golf course search by state

<http://golfingnear.com>

Email search by domain

<http://emailbydomain.com>

Auto manuals search

<http://auto.somanuals.com>

TV manuals search

<http://tv.somanuals.com>