

COLOR GPS/PLOTTER/SOUNDER GP-7000F Operator's Guide

The purpose of this Operator's Guide is to provide basic operating procedures for this equipment. For more detailed information see the Operator's Manual.

RANGE key

Changes the range.

-: Shrinks the scale, and expands image.

+: Expands the scale, and shrinks image.

Cursor pad

Moves the cursor.

(Sounder) Moves the time cursor.

Hard keys

See below.

ENTER knob

Rotation: Selects menu items.

(Sounder) Moves VRM.

Push: Confirms entry.

Soft keys

Changes function according to screen in use.

Card slots

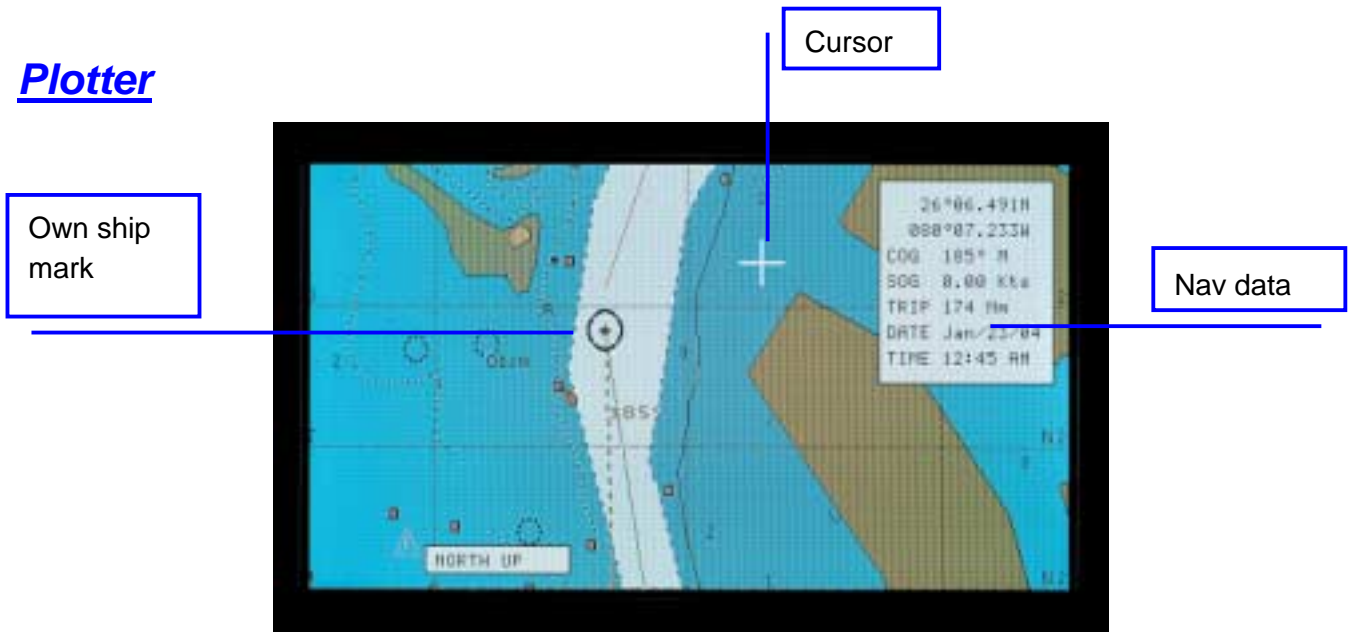
Drive for chart/memory cards.

(Hard keys)

Key name	Function
MENU key	Shows/hides the menu bar.
DISP key	Shows/hides DISPLAY MODE menu.
MOB/WPT key	Short press: Enters a waypoint. Long press: Enters the MOB mark.
TLL/GOTO key	Sets the waypoint or route as destination.
ROUTE key	Creates the route.
CLEAR key	Silences the audible alarm; erases the various windows one by one.
POWER/BRILL key	Long press: Turns power off. Short press: Turns power on. Shows the BACKLIGHT window.



Plotter



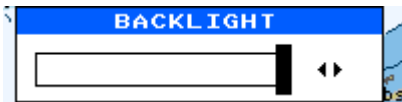
Plotter display

Returning Own Ship to Screen Center

Press the **CENTER** soft key.

Adjusting Brilliance

1. Press the **BRILL** key to show the BACKLIGHT window.



2. Rotate the **ENTER** knob to adjust the brilliance.
3. Push the **ENTER** knob to close the window.

Entering Waypoints

1. Operate the cursor pad to place the cursor at the position desired.
2. Press the **MOB/WPT** key. Finally, press the **ENTER** knob.

Entering Routes

1. Operate the cursor pad to place the cursor at the position desired.
2. Press the **ROUTE** key, and then press the **SAVE** soft key.
3. Repeat steps 1 and 2 to complete the route.

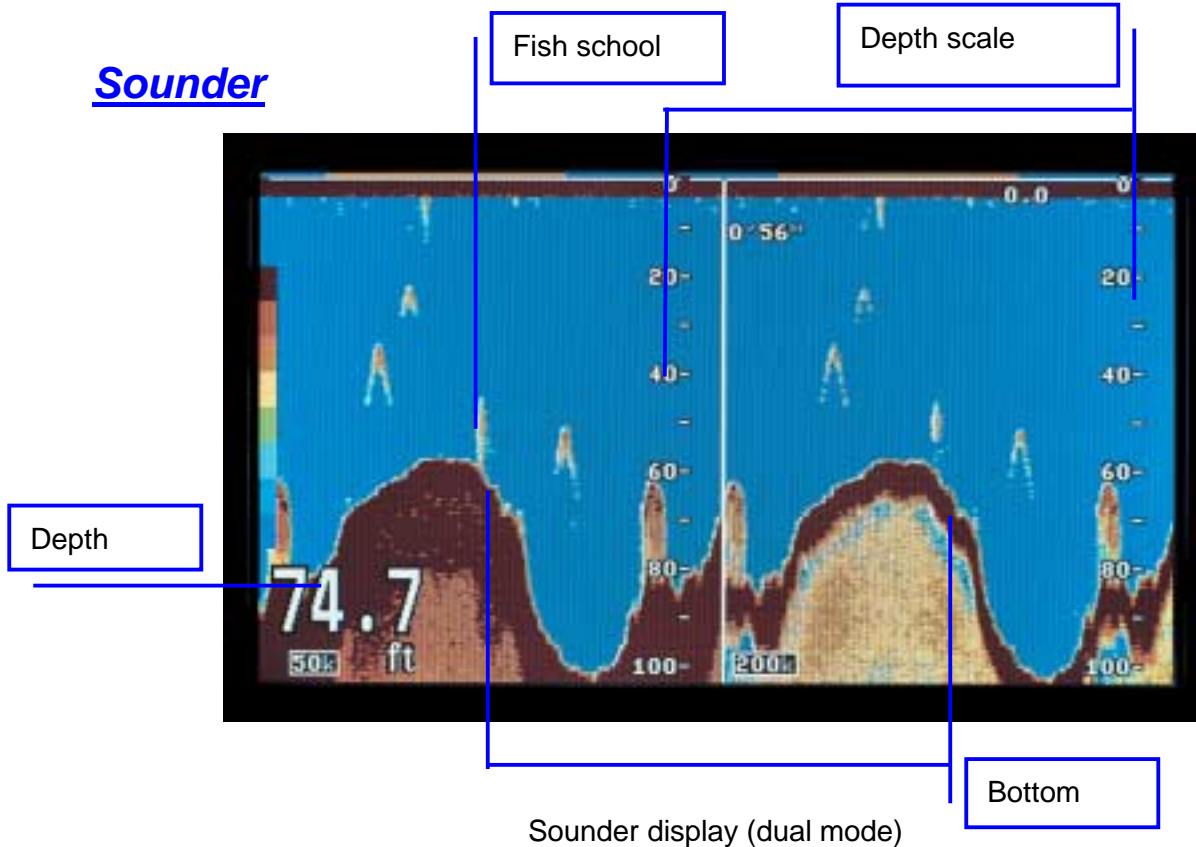
Setting Destination

Operate the cursor pad to place the cursor on the waypoint you want to go, and then press the **GOTO** key.

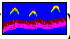
Setting Arrival Alarm

1. Press the **MENU** key.
2. Choose ALARMS from the menu bar, and then push the **ENTER** knob.
3. Choose ARRIVAL ALARM and then push the **ENTER** knob.
4. Rotate the **ENTER** knob to choose the value and push it.
5. Enter the alarm range and then press the **ENTER** knob.

Sounder



Showing the Sounder Display

1. Press the **DISP** key.
2. Rotate the **ENTER** knob to choose the sounder icon ().
3. Push the **ENTER** knob.

Selecting the Sounder Display Mode

1. Press the **DISP** soft key.

NORMAL
BOTTOM LOCK
BOTTOM ZOOM
MARKER ZOOM
BOTTOM DISCRIMINATION

2. Rotate the **ENTER** knob to choose the mode desired.
3. Push the **ENTER** knob.

Automatic Sounder Operation

The automatic sounder function automatically selects the proper gain, range scale and clutter suppression.

1. With a sounder display showing, press the **AUTO** soft key.
2. Rotate the **ENTER** knob to choose FISH or CRUISE, and then push it.

Manual Sounder Operation

1. With a sounder display showing, press the **AUTO** soft key.
2. Rotate the **ENTER** knob to choose MANUAL, and then push the **ENTER** knob.

Adjusting the gain

Choose GAIN 50 or GAIN 200 from the SENSITIVITY menu, and then enter appropriate gain.

Shifting the basic range

Press the **SHIFT** soft key, and then rotate the **ENTER** knob.

Suppressing Interference

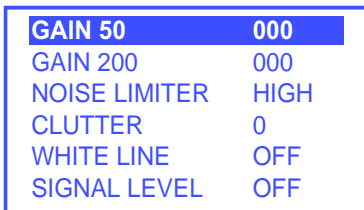
1. Press the **MENU** key to show the menu bar.
2. Choose NOISE LIMITER from the SENSITIVITY menu, and then push the **ENTER** knob.



3. Rotate the **ENTER** knob to choose LOW, MEDIUM or HIGH as appropriate.
4. Push the **ENTER** knob.

Suppressing Low Level Noise

1. Press the **MENU** key to show the menu bar.
2. Choose CLUTTER from the SENSITIVITY menu.



3. Push the **ENTER** knob to show the clutter level window.
4. Rotate the **ENTER** knob to choose clutter rejection level.
5. Push the **ENTER** knob.

Selecting Picture Advance Speed

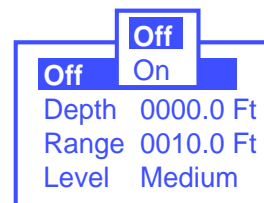
1. Choose PICTURE ADVANCE from the SOUNDER menu.
2. Push the **ENTER** knob to show the picture advance window.



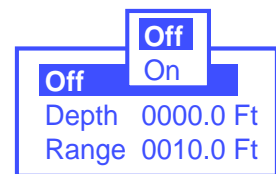
3. Rotate the **ENTER** knob to choose speed.
4. Push the **ENTER** knob.

Activating Sounder Alarm

1. Press the **MENU** key to show the menu bar.
2. Choose ALARMS, and then push the **ENTER** knob.
3. Rotate the **ENTER** knob to choose FISH ALARM or FISH ALARM (B/L) as appropriate.
4. Push the **ENTER** knob twice.



Fish alarm



Fish alarm (B/L)

3. Rotate the **ENTER** knob to choose On, and then enter the depth and range. For FISH ALARM, Level should also be entered.
4. Press the **SAVE** soft key.

PUB. NO. OSE-44291-A1
(0409, HI MA) GP-7000F



* 00014913800 *

Free Manuals Download Website

<http://myh66.com>

<http://usermanuals.us>

<http://www.somanuals.com>

<http://www.4manuals.cc>

<http://www.manual-lib.com>

<http://www.404manual.com>

<http://www.luxmanual.com>

<http://aubethermostatmanual.com>

Golf course search by state

<http://golfingnear.com>

Email search by domain

<http://emailbydomain.com>

Auto manuals search

<http://auto.somanuals.com>

TV manuals search

<http://tv.somanuals.com>