

COLOR DGPS/PLOTTER/SOUNDER GP-1850DF

COLOR GPS/PLOTTER/SOUNDER GP-1850F

Operator's Guide

The purpose of this operator's guide is to provide the basic operating procedures for this equipment. For detailed information, refer to the operator's manual.

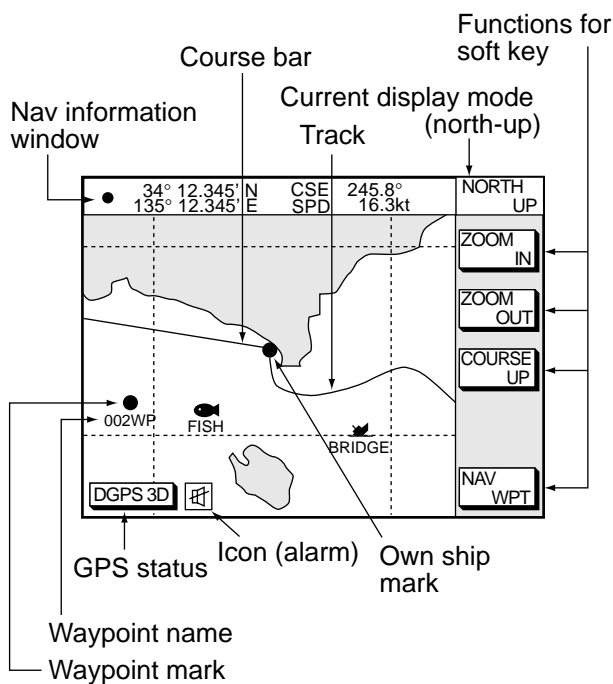
Turning the Power On/Off

Press and hold down the [POWER/BRILL] switch.

Adjusting Tone and Brilliance

1. Press the [POWER/BRILL] key with a touch-and-release action.
2. Press the appropriate soft key or cursor pad to adjust.

◆ PLOTTER ◆



Typical indications on the plotter display

Displaying Electronic Chart at Power Up

Insert mini chart card in slot and turn on the power.

Selecting Nav Data Displays

Press the soft key NAV L/L (WPT, S/C).

Changing Chart Scale

Press the soft key [ZOOM IN] to enlarge; [ZOOM OUT] to shrink.

Turning the Cursor On/Off

Cursor On: Operate the cursor pad.
Cursor Off: Press the soft key [CENTER].

Shifting the Cursor

Operate the cursor pad.

Shifting the Display

Press and hold down the cursor pad.



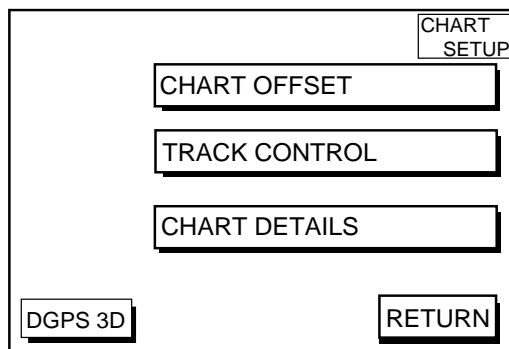
FURUNO ELECTRIC CO., LTD.
NISHINOMIYA, JAPAN

Returning Own Ship to Screen Center

Press the soft key CENTER.

Changing the Plot Interval

1. Press the [MENU] key to show the main menu.
2. Press the soft key CHART SETUP OPTIONS to show the chart setup options menu.



3. Press the soft key TRACK CONTROL.
4. Press ▲ or ▼ to select TIME INTERVAL or DIST INTERVAL.
5. Press the soft key EDIT.
6. Key in the interval desired.

Entering Mark

1. Press the [MENU] key and the soft key DISPLAY OPTIONS.
2. Press ▼ to select OPERATION MODE.
3. Press the soft key EDIT.
4. Press ▼ to select FISHING.
5. Press the soft key ENTER or the [ENTER] key.
6. Press the PLOT key to display the plotter display.
7. Press the [HIDE/SHOW] key to display the soft key MARK ENTRY.
8. Press the soft key MARK ENTRY.

When the cursor is displayed, a mark which its shape and color are presetted is entered to cursor position. When the cursor is not displayed, a mark is entered to own ship position. The mark attributes can be changed by the soft key MARK EDIT.

Stopping, Restarting Recording of Track

1. Press the [MENU] key.
2. Press the soft key CHART SETUP OPTIONS.
3. Press the soft key TRACK CONTROL.
4. Press the soft key STOP TRACK. NOT TRACKING indication appears at the bottom of the display.

To restart recording, press the soft key START TRACK.

Entering Waypoints at Own Ship Position

Press the [SAVE/MOB] key with a touch-and-release action.

Entering Waypoints By Cursor

1. Press the [WPT/RTE] key.
2. Press the soft key WAYPOINTS.
3. Press the soft key WAYPOINT BY CURSOR to show the plotter display.
4. Operate the cursor to place the cursor on the position you want to enter the waypoint.
5. Press the soft key NEW WPT.
6. Press the soft key SAVE.

Registering Routes

1. Press the [WPT/RTE] key.
2. Press the soft key ROUTES.
3. Press the soft key NEW ROUTE.
4. Press the soft key LOCAL LIST or ALPHA LIST.
5. Press ▲ or ▼ to select a waypoint.
6. Press the soft key ADD WPT.
7. Repeat step 5-7.
8. Press the soft key SAVE.

Setting Destination by Waypoint Number

1. Place the cursor on the waypoint you want to go on the plotter display.
2. Press the soft key GO TO WPT.

Canceling Destination

1. Press the [WPT/RTE] key.
2. Press the soft key LOG.
3. Press ▲ or ▼ to select the waypoint desired.
4. Press the soft key STOP.
5. Press the [ENTER] key to select YES on the confirmation window.
6. Press the soft key RELEASE to show the confirmation window.
7. Press the [ENTER] key to select YES.

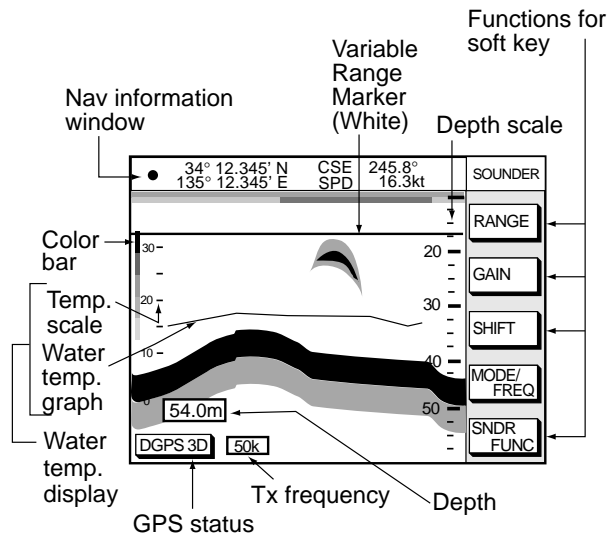
Setting Arrival Alarm

1. Press the [ALARM] key to show the alarm menu.

▶ AUDIO ALARM	ON	ALARM1
ARRIVAL ALARM	ON 0.100nm	EDIT
ANCHOR ALARM	ON 0.050nm	
PROXMTY ALARM	ON	
XTE ALARM	ON 0.100nm	
SPEED ALARM	OVER/UNDER 12.5 ~ 15.0kt	CLEAR ALARM
ALARM INFORMATION		
NO ALARM		
DGPS 3D		NEXT PAGE

2. Select ARRIVAL ALARM.
3. Press the soft key EDIT
4. Press ▲ or ▼ to select ON.
5. Key in the alarm range.
6. Press the soft key ENTER.
Silencing audible alarm: [CLEAR] key.
Disabling alarm: Select OFF at step 3 above.

◆ SOUNDER ◆



Typical indications on normal video sounder display

Showing the Sounder Display

Press the [SNDR] key.

Each pressing of this key toggles the display among Plotter/Sounder display, Normal sounder display and Dual-frequency display.

Selecting the Sounder Display Mode

1. On the normal display, press the soft key SNDR FUNC.
2. Select the mode desired.
3. Press the soft key RETURN.

Automatic Sounder Operation

1. On the normal or dual-frequency display, press the soft key MODE/FREQ. When the plotter/sounder display is displayed, press the soft key SNDR, and then press the soft key MODE/FREQ.
2. Select AUTO.
3. Press the soft key RETURN.

Manual Sounder Operation

1. On the normal or dual-frequency display, press the soft key MODE/FREQ. When the plotter/sounder display is displayed, press the soft key SNDR, and then press the soft key MODE/FREQ.
2. Select MANUAL.
3. Press the soft key RETURN.

Adjusting the gain

Press the soft key GAIN, and then press ▲ or ▼ to set the gain.

Selecting range

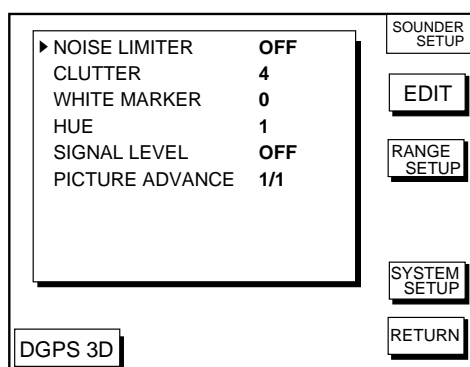
Press the soft key RANGE, and then press ▲ or ▼ to select range.

Shifting the basic range

Press the soft key SHIFT, and then press ▲ or ▼ to shift the basic range.

Suppressing Interference

1. Press the [MENU] key, and then press the soft key SOUNDER SETUP OPTIONS to open the sounder setup menu.



2. Press ▲ or ▼ to select NOISE LIMITER.
3. Press the soft key EDIT.
3. Press ▲ or ▼ to select NL1, NL2 or NL3.
4. Press the soft key RETURN.

Suppressing Low Level Noise

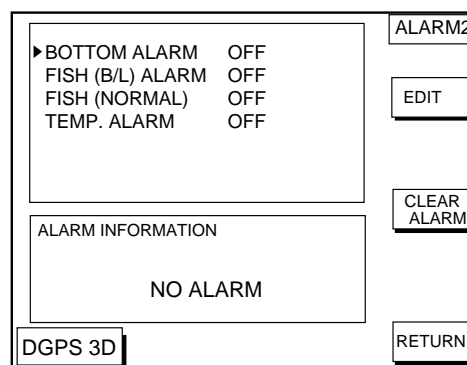
1. Press the [MENU] key, and then press the soft key SOUNDER SETUP OPTIONS to show the sounder setup menu.
2. Press ▲ or ▼ to select CLUTTER.
3. Press the soft key EDIT.
4. Press ▲ or ▼ to select clutter rejection level.
5. Press the soft key RETURN.

Selecting Picture Advance Speed

1. Press the [MENU] key, and then press the soft key SOUNDER SETUP OPTIONS to show the sounder setup menu.
2. Press ▲ or ▼ to select PICTURE ADVANCE.
3. Press the soft key EDIT.
4. Press ▲ or ▼ to select speed.
5. Press the soft key RETURN.

Activating Sounder Alarms

1. Press the [ALARM] key, and then press the soft key NEXT PAGE to show the alarm 2 menu.



2. Press ▲ or ▼ to select the alarm among BOTTOM, FISH (B/L), FISH (NORMAL) and TEMP. (temperature).
3. Press the soft key EDIT.
4. Press ▲ or ▼ to select on, and then key in the range to set.
5. Press the soft key ENTER.



Free Manuals Download Website

<http://myh66.com>

<http://usermanuals.us>

<http://www.somanuals.com>

<http://www.4manuals.cc>

<http://www.manual-lib.com>

<http://www.404manual.com>

<http://www.luxmanual.com>

<http://aubethermostatmanual.com>

Golf course search by state

<http://golfingnear.com>

Email search by domain

<http://emailbydomain.com>

Auto manuals search

<http://auto.somanuals.com>

TV manuals search

<http://tv.somanuals.com>