

# FURUNO

## OPERATOR'S MANUAL

MARINE RADAR

---

MODEL MODEL 851 MARK-2

---



**FURUNO ELECTRIC CO., LTD.**  
NISHINOMIYA, JAPAN

PRINTED IN JAPAN

© **FURUNO ELECTRIC CO., LTD.**

9-52, Ashihara-cho,  
Nishinomiya, Japan

Telephone: 0798-65-2111  
Telefax: 0798-65-4200

•Your Local Agent/Dealer

All rights reserved.

Printed in Japan

FIRST EDITION : JUN. 2000  
D : JUL. 9, 2001

(YOSH)

PUB. No. OME-34900  
MODEL 851 MARK-2



\* 00080899500 \*



# SAFETY INSTRUCTIONS



## WARNING



**ELECTRICAL  
SHOCK  
HAZARD**

### Do not open the equipment.

Hazardous voltage which can cause electrical shock, burn or serious injury exists inside the equipment. Only qualified personnel should work inside the equipment.



### Wear a safety belt and hard hat when working on the antenna unit.

Serious injury or death can result if someone falls from the radar antenna mast.



### Stay away from transmitting antenna.

The radar antenna emits microwave radiation which can be harmful to the human body, particularly the eyes. Never look directly into the antenna radiator from a distance of less than 1 m when the radar is in operation.



### Turn off the radar power switch before servicing the antenna unit. Post a warning sign near the switch indicating it should not be turned on while the antenna unit is being serviced.

Prevent the potential risk of someone begin struck by the rotating antenna and exposure to RF radiation hazard.



## WARNING

### Do not disassemble or modify the equipment.

Fire, electrical shock or serious injury can result.

### Turn off the power immediately if water leaks into the equipment or the equipment is emitting smoke or fire.

Fire or equipment damage can result if a different cable is used.

### Keep heater away from equipment.

Heat can alter equipment shape and melt the power cord, which can cause fire or electrical shock.

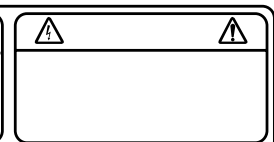
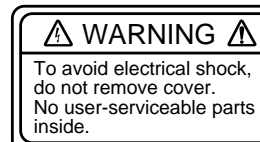


## CAUTION

### Use the proper fuse.

Use of a wrong fuse can result in fire or permanent equipment damage.

**A warning label is attached to the display unit. Do not remove the label. If the label is missing or damaged, contact a FURUNO agent or dealer.**



Name: Warning Label (2)  
Type: 03-129-1001-0  
Code No.: 100-236-740

# TABLE OF CONTENTS

---

|  |      |
|--|------|
| <b>FOREWORD</b> .....  | iv   |
| <b>SYSTEM CONFIGURATION</b> .....                                  | v    |
| <b>1. PRINCIPLE OF OPERATION</b>                                   |      |
| 1.1 What is Radar?.....  | 1-1  |
| 1.2 How Ships Determined Position<br>Before Radar.....             | 1-1  |
| 1.3 How Radar Determines Range... 1-1                              |      |
| 1.4 How Radar Determines<br>Bearing.....                           | 1-1  |
| 1.5 Radar Wave Speed and Antenna<br>Rotation Speed .....           | 1-2  |
| 1.6 The Radar Display.....   | 1-2  |
| <b>2. OPERATION</b>  |      |
| 2.1 Control Description.....                                       | 2-1  |
| 2.2 Display Indications and<br>Markers .....                       | 2-2  |
| 2.3 Turning the Radar On and Off ....                              | 2-2  |
| 2.4 Transmitting.....  | 2-3  |
| 2.5 Selecting the Range .....                                      | 2-3  |
| 2.6 Adjusting LCD Backlighting and<br>Display Tone.....            | 2-3  |
| 2.7 Adjusting Control Panel<br>Illumination .....                  | 2-4  |
| 2.8 Adjusting GAIN, STC, A.C RAIN<br>and FTC .....                 | 2-4  |
| 2.9 Tuning the Receiver .....                                      | 2-6  |
| 2.10 Measuring the Range .....                                     | 2-6  |
| 2.11 Measuring the Bearing .....                                   | 2-7  |
| 2.12 Menu Operation.....   | 2-8  |
| 2.13 Selecting the Display Mode ....                               | 2-10 |
| 2.14 The Window Display.....                                       | 2-11 |
| 2.15 Selecting the Presentation<br>Mode .....                      | 2-12 |
| 2.16 Guard Alarm .....   | 2-12 |
| 2.17 Suppressing Radar<br>Interference .....                       | 2-14 |
| 2.18 Suppressing Noise<br>Interference .....                       | 2-15 |
| 2.19 Selecting Pulselength.....                                    | 2-15 |
| 2.20 Off Centering the Display .....                               | 2-15 |
| 2.21 Echo Trails .....   | 2-16 |
| 2.22 Navigation Data Display.....                                  | 2-17 |
| 2.23 Echo Stretch (magnifying<br>long range echoes) .....          | 2-18 |
| 2.24 Selecting Unit of<br>Measurement for Range .....              | 2-19 |
| 2.25 Selecting Bearing Reference..                                 | 2-19 |
| 2.26 Watchman.....   | 2-19 |
| 2.27 Erasing the Heading Marker... 2-20                            |      |
| 2.28 Deselecting Ranges .....                                      | 2-20 |
| 2.29 Displaying Navigation Data<br>During Stand-by.....            | 2-20 |
| 2.30 Outputting Cursor Position to<br>Navigator .....              | 2-21 |
| 2.31 Displaying Cursor Position,<br>Range and Bearing to Cursor .. | 2-21 |
| 2.32 Visual Alarm Indications.....                                 | 2-21 |
| <b>3. INTERPRETING THE DISPLAY</b>                                 |      |
| 3.1 The Radar Wave and Radar<br>Horizon .....                      | 3-1  |
| 3.2 Target Properties and Radar<br>Wave Reflection.....            | 3-2  |
| 3.3 Range Resolution .....   | 3-2  |
| 3.4 Bearing Resolution.....  | 3-2  |
| 3.5 False Echoes .....   | 3-3  |
| 3.6 SART .....   | 3-5  |
| 3.7 Racon (Radar Beacon) .....                                     | 3-7  |
| <b>4. MAINTENANCE &amp;<br/>TROUBLESHOOTING</b>                    |      |
| 4.1 Preventative Maintenance.....                                  | 4-1  |
| 4.2 Replacing the Fuse .....                                       | 4-2  |
| 4.3 Troubleshooting .....  | 4-2  |
| 4.4 Test .....   | 4-3  |
| 4.5 Replacing the magnetron .....                                  | 4-3  |

**MENU TREE..... A-1**  
**SPECIFICATIONS..... SP-1**  
**INDEX..... index-1**  
**Declaration of Conformity**

# FOREWORD

---

Congratulations on your choice of the FURUNO Marine Radar MODEL 851 MARK-2. We are confident you will see why the FURUNO name has become synonymous with quality and reliability.

For over 50 years FURUNO Electric Company has enjoyed an enviable reputation for innovative and dependable marine electronics equipment. This dedication to excellence is furthered by our extensive global network of agents and dealers.

Your radar is designed and constructed to meet the rigorous demands of the marine environment. However, no machine can perform its intended function unless properly installed and maintained. Please carefully read and follow the recommended procedures for installation, operation and maintenance.

While this unit can be installed by the purchaser, any purchaser who has doubts about his or her technical abilities may wish to have the unit installed by a FURUNO representative or other qualified technician. The importance of a thorough installation cannot be overemphasized.

We would appreciate hearing from you, the end-user, about whether we are achieving our purposes.

Thank you for considering and purchasing FURUNO equipment.

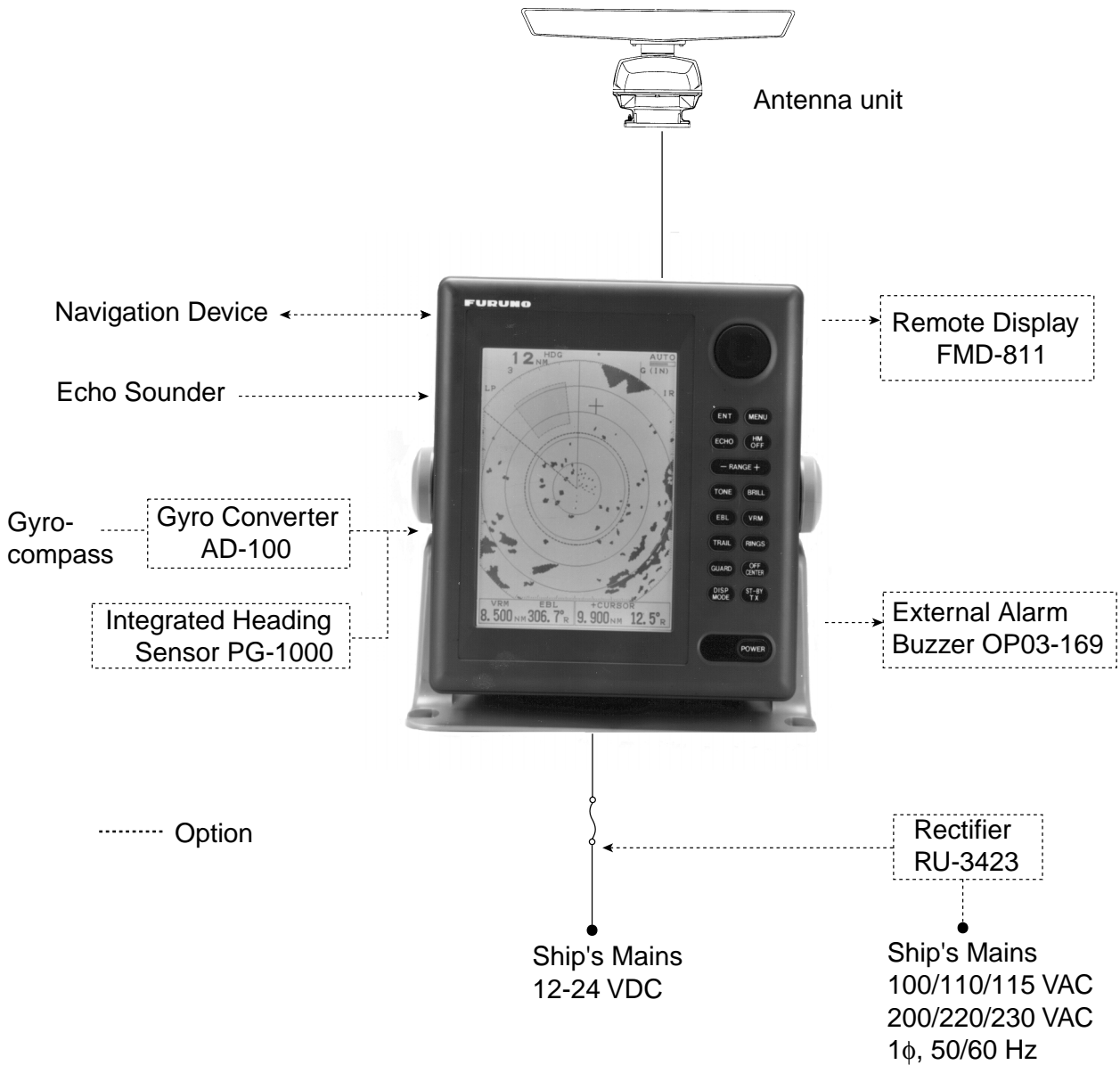
## Features

Your radar has a large variety of functions, all contained in a remarkably small cabinet.

The main features of the MODEL 851 MARK-2 are:

- Traditional FURUNO reliability and quality in a compact, lightweight and low-cost radar.
- Smartly styled, light-weight and compact antenna fits even on small yachts.
- Durable brushless antenna motor.
- High definition 8" LCD raster-scan display.
- On-screen alphanumeric readout of all operational information.
- Standard features include EBL (Electronic Bearing Line), VRM (Variable Range Marker), Guard Alarm, Display Off Center and Echo Trail.
- Watchman feature periodically transmits the radar to check for radar targets which may be entering (or exiting) the alarm zone.
- Ship's position in latitude and longitude (or Loran C Time Differences), range and bearing to a waypoint, ship's speed, heading and course can be shown in the bottom text area. (Requires a navigation aid which can output such data in NMEA 0183 format.)
- Zoom feature provided.
- Omnipad makes the selection of target and menu items easy.

# SYSTEM CONFIGURATION



**MODEL 851 MARK-2**

# 1. PRINCIPLE OF OPERATION

---

## 1.1 What is Radar?

The term "RADAR" is an acronym meaning RAdio Detection And Ranging. It is a device which measures the time it takes for a pulsed signal to be reflected back from an object.

## 1.2 How Ships Determined Position Before Radar

The use of echoes to determine position did not begin with radar. Ships would sound a short blast on their whistles, fire a shot, or strike a bell as an aid to navigation when running in fog near a rugged shoreline. The time between the origination of the sound and the returning of the echo indicated how far the ship was from the cliffs or the shore. The direction from which the echo was heard indicated the relative bearing of the shore.

## 1.3 How Radar Determines Range

Radar determines the distance to the target by calculating the time difference between the transmission of a radar signal and the reception of the reflected echo. It is a known fact that radar waves travel at a nearly constant speed of 162,000 nautical miles per second. Therefore the time required for a transmitted signal to travel to the target and return as an echo to the source is a measure of the distance to the target. Note that the echo makes a complete round trip, but only half the time of travel is needed to determine the one-way distance to the target. This radar automatically takes this into account in making the range calculation.

## 1.4 How Radar Determines Bearing

The bearing to a target found by the radar is determined by the direction in which the radar antenna is pointing when it emits an electronic pulse and then receives a returning echo. Each time the antenna rotates pulses are transmitted in the full 360 degree circle, each pulse at a slightly different bearing from the previous one. Therefore, if one knows the direction in which the signal is sent out, one knows the direction from which the echo must return.



## 1.5 Radar Wave Speed and Antenna Rotation Speed

The speed of the radar waves out to the target and back again as echoes is extremely fast compared to the speed of rotation of the antenna. By the time radar echoes have returned to the antenna, the amount of antenna rotation after initial transmission of the radar pulse is extremely small.

## 1.6 The Radar Display

Targets are displayed on what is called a Plan Position Indicator (PPI). This display is essentially a polar diagram, with the transmitting ship's position at the center. Images of target echoes are received and displayed at their relative bearings, and at their distance from the PPI center.

With a continuous display of the images of targets, the motion of the transmitting ship is also displayed.

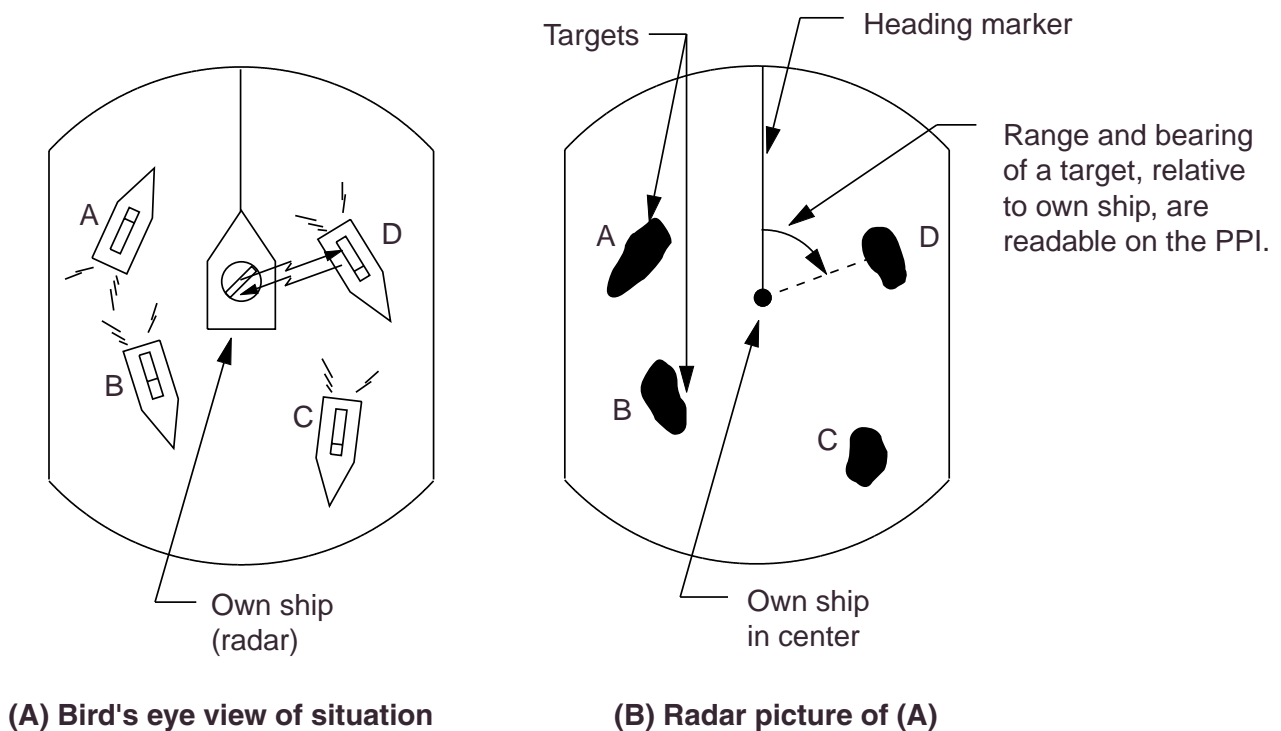


Figure 1-1 How radar works

# 2. OPERATION

## 2.1 Control Description

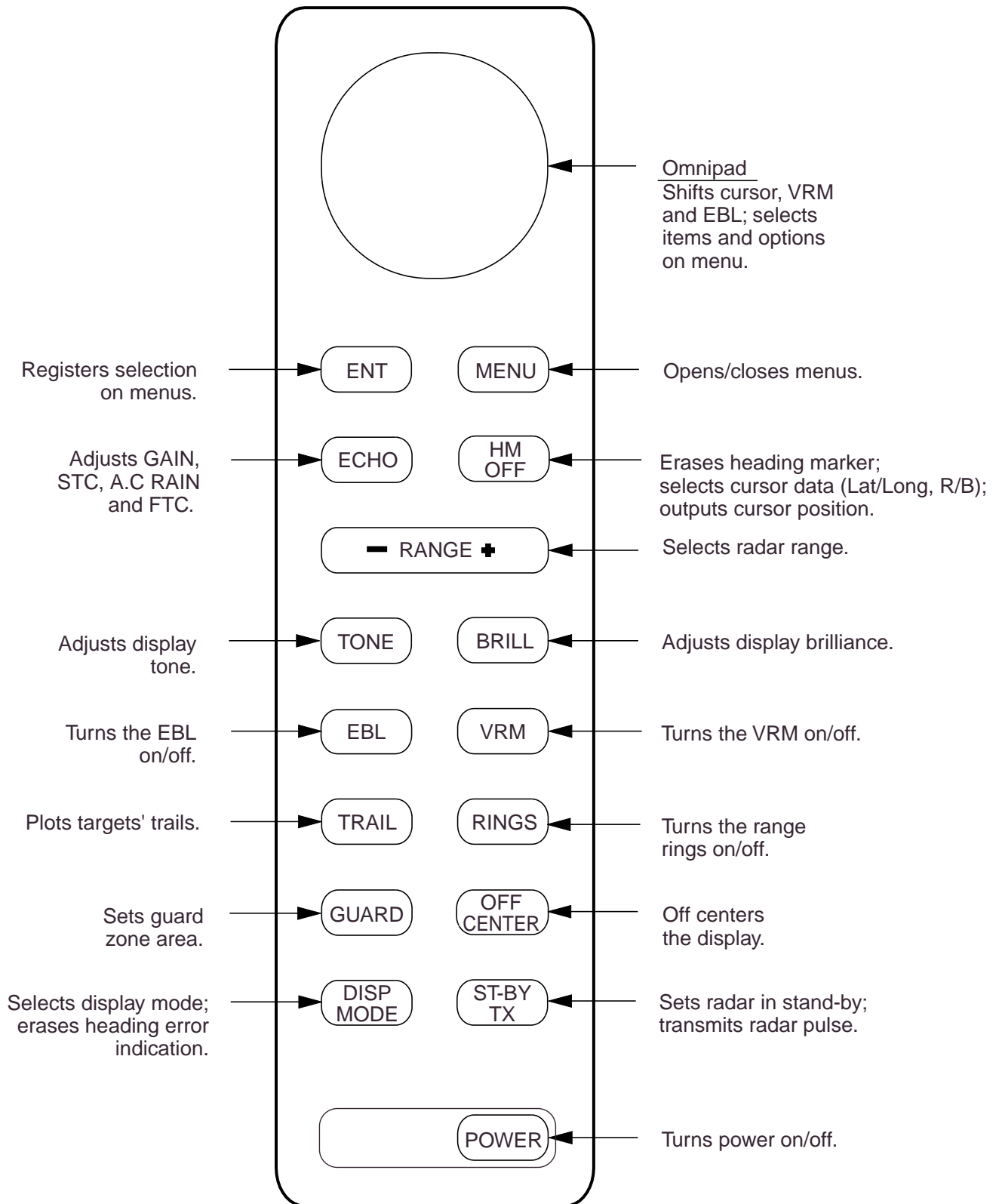


Figure 2-1 Control panel

## 2.2 Display Indications and Markers

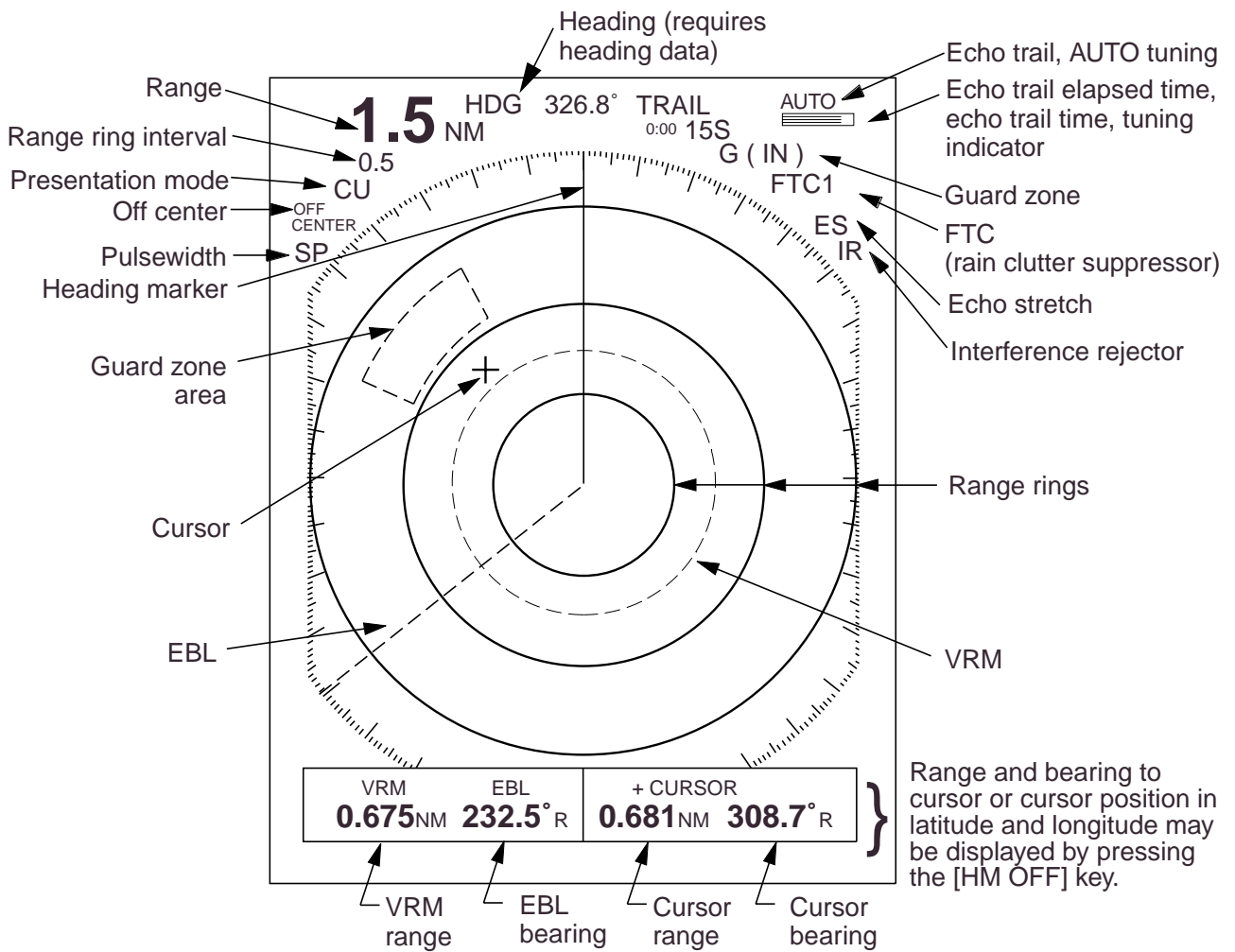


Figure 2-2 Display indications

## 2.3 Turning the Radar On and Off

Press the [POWER] key to turn the radar on or off. The control panel lights and a timer displays the time remaining for warm up of the magnetron (the device which produces radar pulses), counting down from 1:30.

**Note:** When the power is reapplied within a certain amount of time and circuits remain charged, the warmup process is skipped—you can transmit without one and a half minutes st-by time.



## WARNING

The radar antenna emits high frequency radio radiation which can be harmful, particularly to your eyes. Never look directly at the antenna from a distance of less than three feet when the radar is in operation. Always make sure no one is near the antenna before turning on the radar.

**Note:** When the heading signal is lost, the HDG readout at the top of the screen shows \*\*\*.\*. This warning stays on when the heading signal is restored to warn the operator that the readout may be unreliable. After confirming the heading readout (if necessary, adjust it), the warning may be erased by pressing the [DISP MODE] key.

## 2.4 Transmitting

After the power is turned on and the magnetron has warmed up, ST-BY (Stand-By) appears at the screen center. This means the radar is now fully operational. In stand-by the radar is available for use at anytime—but no radar waves are being transmitted.

Press the [ST-BY TX] key to transmit. When transmitting, any echoes reflected from targets appear on the display. This radar displays echoes in four tones of gray according to echo strength.

When you won't be using the radar for an extended period but want to keep it in a state of readiness, press the [ST-BY TX] key to set the radar in stand-by.

## 2.5 Selecting the Range

The range selected automatically determines the range ring interval, the number of range rings, pulselength and pulse repetition rate, for optimal detection capability in short to long ranges.

### Procedure

Press the [- RANGE +] key. The range and range ring interval appear at the top left corner on the display.

## Tips for selecting the range

- When navigating in or around crowded harbors, select a short range to watch for possible collision situations.
- If you select a lower range while on open water, increase the range occasionally to watch for vessels that may be heading your way.

## 2.6 Adjusting LCD Backlighting and Display Tone

The [BRILL] key adjusts the LCD backlighting in eight levels, including off. The [TONE] key adjusts the tone (contrast) of the display in 32 levels, including off.

### Procedure

1. Press the [BRILL] key (or [TONE] key). The display shown in Figure 2-3 appears.

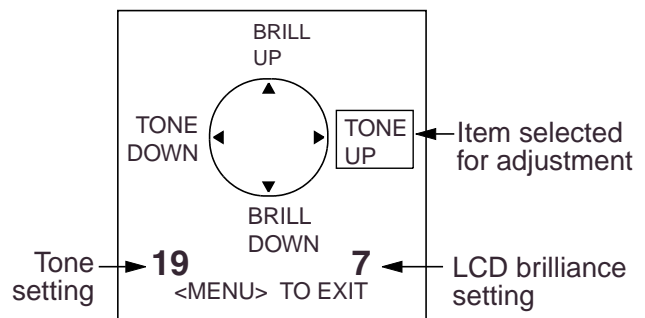


Figure 2-3 Display for adjustment of brilliance and tone

2. Press the [BRILL] key (or [TONE] key) to set level. For fine adjustment, press omnipad at 12 o'clock/6 o'clock for brilliance and 3 o'clock/9 o'clock for tone.

## 2.7 Adjusting Control Panel Illumination

### Procedure

1. Press the [MENU] key.
2. Press the omnipad at 6 o'clock to select Backlight/Brilliance and press the [ENT] key.
3. Press the omnipad at 6 o'clock to select Panel.
4. Press the omnipad at 3 o'clock/9 o'clock to select illumination level; 4 is the highest.
5. Press the [ENT] key followed by the [MENU] key.

2. Press the omnipad at 6 o'clock/12 o'clock to select item to adjust. Current selection is circumscribed by dashed rectangle.
3. Press the [ENT] key.
4. Press the omnipad at 3 o'clock/9 o'clock to set level.
5. Press the [ECHO] key to finish.

## 2.8 Adjusting GAIN, STC, A.C RAIN and FTC

### General procedure

The [ECHO] key enables adjustment of the GAIN, STC, A.C RAIN and FTC.

1. Press the [ECHO] key. The following display appears.

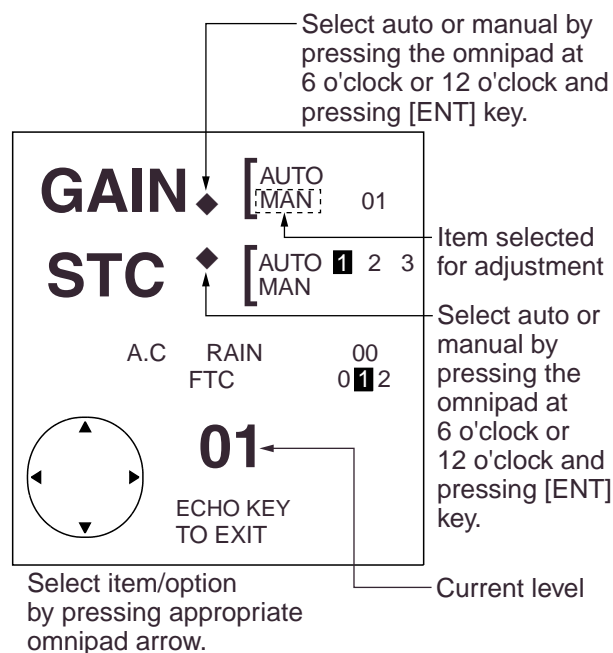


Figure 2-4 Display for adjustment of GAIN, STC, A.C RAIN and FTC

### How to adjust the GAIN (sensitivity)

The GAIN works in precisely the same manner as the volume control of a broadcast receiver, amplifying the signals received.

You can adjust the GAIN automatically or manually. If you select AUTO, the GAIN automatically adjusted. The range of the GAIN adjustment is from 1 to 3; 3 is the highest. For manual adjustment, adjust the sensitivity on the highest range—the background noise is clearer on that range. The range of GAIN adjustment is from 01 to 41. The proper setting is such that the background noise is just visible on the screen. If you set up for too little GAIN, weak echoes may be missed.

On the contrary excessive GAIN yields too much background noise; strong targets may be missed because of the poor contrast between desired echoes and the background noise on the display.

## How to adjust STC (suppressing sea clutter)

Echoes from waves can be troublesome, covering the central part of the display with random signals known as sea clutter. The higher the waves, and the higher the antenna above the water, the further the clutter will extend. Sea clutter appears on the display as many small echoes which might affect radar performance. (See the left-hand figure in Figure 2-5).

The STC reduces the amplification of echoes at short ranges (where clutter is the greatest) and progressively increases amplification as the range increases, so amplification will be normal at those ranges where there is no sea clutter. The control is effective up to about 4 miles.

STC can be adjusted automatically or manually. If you select AUTO, the STC automatically adjusted. The range of STC adjustment is from 1 to 3; 3 is the highest. For manual adjustment, first adjust the gain and then transmit on short range. The range of STC adjustment is from 00 to 50. Adjust the STC level such that the clutter is broken up into small dots, and small targets become distinguishable. If the setting is set too low, targets will be hidden in the clutter, while if it is set too high, both sea clutter and targets will disappear from the display. In most cases adjust so clutter has disappeared to leeward, but a little is still visible windward.

If there is no clutter visible on the display, turn off the circuit.

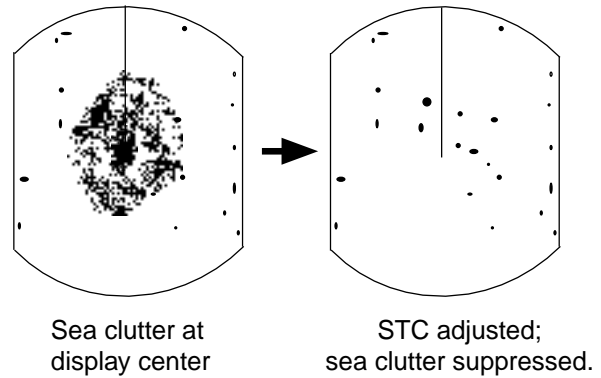


Figure 2-5 Effect of STC

## How to adjust A.C RAIN and FTC (suppressing rain clutter)

The vertical beamwidth of the antenna is designed to see surface targets even when the ship is rolling. However, by this design the unit will also detect rain clutter (rain, snow, hail, etc.) in the same manner as normal targets. Figure 2-6 shows the appearance of rain clutter on the display.

### Adjusting A.C RAIN

When rain clutter masks echoes over a wide range, raise the A.C RAIN slightly to distinguish targets from the clutter.

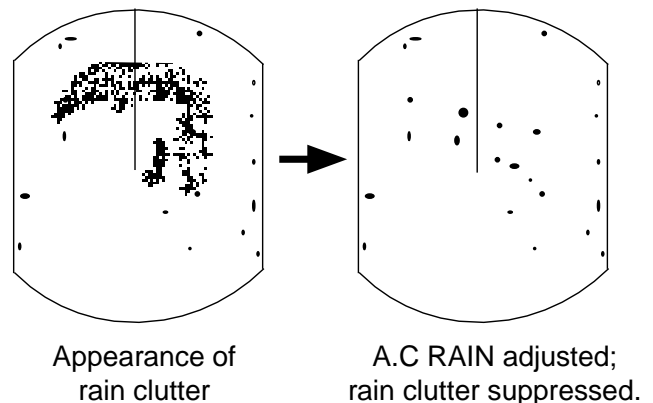


Figure 2-6 Effect of A.C RAIN

## Adjusting FTC

To suppress rain clutter from heavy storms or scattered rain clutter, adjust the FTC among 0, 1 and 2 (0 is off). The FTC circuit splits up these unwanted echoes into a speckled pattern, making recognition of solid targets easier. FTC and selected level appear at the top right-hand corner of the display when the circuit is turned on.

**Note:** In addition to reducing clutter, the FTC can be used in fine weather to clarify the picture when navigating in confined waters. However, with the circuit activated the receiver is less sensitive. Therefore, turn off the circuit when its function is not required.

## 2.9 Tuning the Receiver

The receiver can be tuned automatically or manually. For automatic tuning the receiver is tuned each time you switch from stand-by to transmit. For manual tuning, the receiver is properly tuned when the longest tuning indicator appears. (However, the length of the indicator changes with the number of radar echoes, range and other factors.)

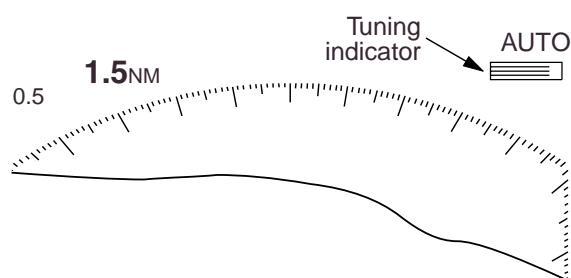


Figure 2-7 Tuning indicator

**Note:** When you switch from manual to automatic, wait 4 seconds before closing the MENU. Otherwise automatic tuning may not work properly.

## Manual tuning

The default tuning method is automatic. To switch to manual tuning;

1. Press the [MENU] key to open the menu.
2. Press the omnipad at 6 o'clock to select Tuning.
3. Press the omnipad at 3 o'clock to select MANUAL.
4. Press the [ENT] key followed by the [MENU] key.

### How to tune manually

While pressing and holding down the [HM OFF] key, press the 9 o'clock or 3 o'clock position on the omnipad to tune. Tune to show the longest tuning indicator.

## 2.10 Measuring the Range

You can measure the range to a target three ways: by the range rings, by the cursor, and by the VRM (Variable Range Marker).

### By range rings

Press the [RINGS] key to display the range rings. Count the number of rings between the center of the display and the target. Check the range ring interval (at the top left corner) and judge the distance of the echo from the inner edge of the nearest ring.

### By cursor

Operate the omnipad to place the cursor intersection on the inside edge of the target echo. The range to the target, as well as the bearing, appears at the bottom of the display.

## By VRM

1. Press the [VRM] key to display the VRM.
2. Press the omnipad to place the VRM on the inside edge of the target.
3. Check the VRM readout at the bottom left-hand corner of the display to find the range to the target.

**Note:** The VRM is automatically anchored if the omnipad is not operated within about 10 seconds.

**To erase the VRM,** press and hold down the [VRM] key for about two seconds.

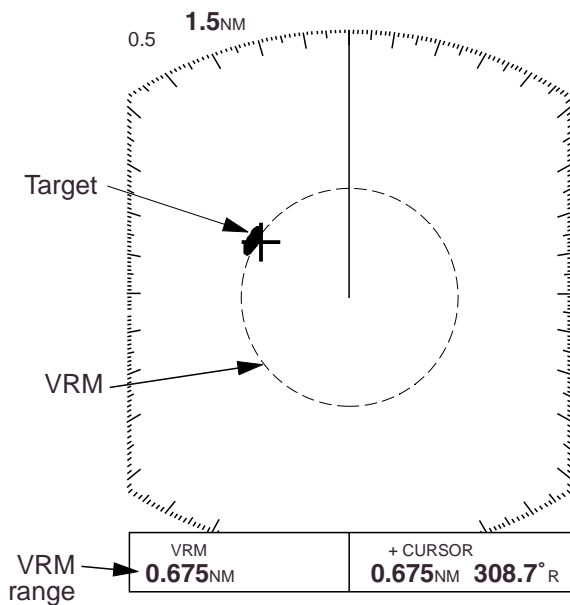


Figure 2-8 Measuring range by the VRM

## 2.11 Measuring the Bearing

There are two ways to measure the bearing to a target: by the cursor, and by the EBL (Electronic Bearing Line).

### By cursor

Operate the omnipad to bisect the target with the cursor intersection. The bearing to the target appears at the bottom right-hand corner of the display.

### By EBL

1. Press the [EBL] key to display the EBL.
2. Press the omnipad to bisect the target with the EBL.
3. Check the EBL readout at the bottom left-hand corner of the display to find the bearing to the target.

**Note:** The EBL is automatically anchored if the omnipad is not operated within about 10 seconds.

**To erase the EBL,** press and hold down the [EBL] key for about two seconds.

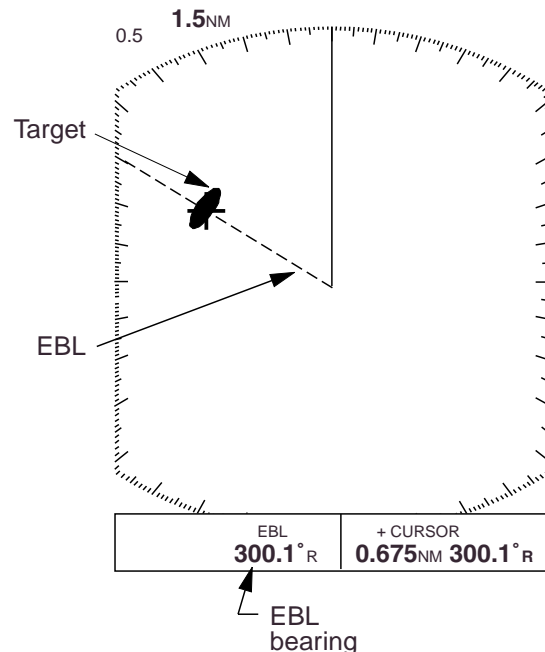


Figure 2-9 Measuring bearing by the EBL



## Tips for measuring the bearing

- Bearing measurements of smaller targets are more accurate; the center of larger target echoes is not as easily identified.
- Bearings of stationary or slower moving targets are more accurate than bearings of faster moving targets.
- To minimize bearing errors keep echoes in the outer half of the picture by changing the range scale; angular difference becomes difficult to resolve as a target approaches the center of the display.

### Target on Collision course with your vessel?

You can determine if a target might be on a collision course with your vessel by placing the EBL on the target. If it tracks along the EBL as it approaches the screen center it may be on a collision course with your vessel.

## 2.12 Menu Operation

The menu, consisting of six sub menus, mostly contains less-often used functions which once preset do not require regular adjustment. To open or close the menu, press the [MENU] key. You can select items and options on the menu with the omnipad.

### Basic menu operation

1. Press the [MENU] key to open the main menu.

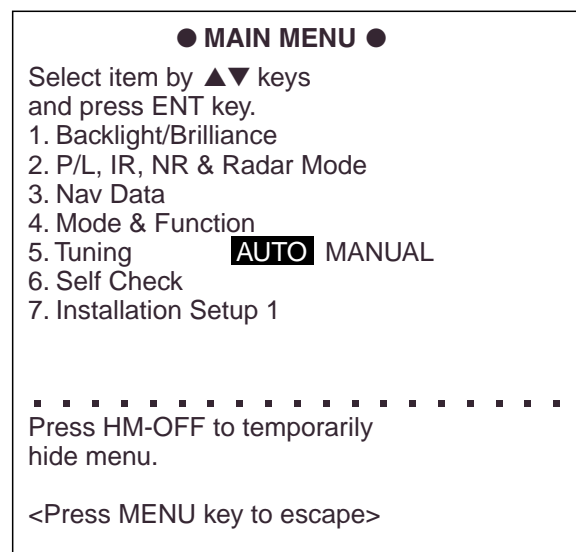


Figure 2-10 Main menu

2. Press the omnipad at 6 o'clock/12 o'clock to select menu and press the [ENT] key.
3. Press the omnipad at 6 o'clock/12 o'clock to select a menu item.
4. Press the omnipad at 3 o'clock/9 o'clock to select an option.
5. Press the [ENT] key to register selection.
6. Press the [MENU] key to close the menu.

## Menu description

*Table 2-1 Menu description*

| Menu  | Function  |
|---|---|
| <p>● <b>BACKLIGHT/BRILLIANCE MENU</b> ●</p> <p>Select item and option by ▲▼ keys.</p> <p>1. Panel      1 2 3 <b>4</b></p> <p>2. Echo Trail <b>1</b> 2</p> <p>.....</p> <p>Press HM-OFF to temporarily hide menu.</p> <p>&lt;Press MENU for main menu.&gt;</p>   | <ol style="list-style-type: none"> <li>1. Selects control panel backlighting; four is maximum backlighting.</li> <li>2. Selects brilliance for echo trails and markers; two is maximum brilliance.</li> </ol>   |
| <p>● <b>P/L, IR, NR &amp; Radar Mode</b> ●</p> <p>Select item and option by ▲▼ keys.</p> <p>1. Pulselength <b>SHORT</b> LONG</p> <p>2. Int Reject    OFF 1 2 <b>3</b></p> <p>3. Noise Reject OFF <b>ON</b></p> <p>4. Echo Stretch <b>OFF</b> ON</p> <p>5. Radar Mode <b>CU</b> WPT-UP</p> <p>.....</p> <p>Press HM-OFF to temporarily hide menu.</p> <p>&lt;Press MENU for main menu.&gt;</p>   | <ol style="list-style-type: none"> <li>1. Selects pulselength for 1.5 and 3 mile ranges.</li> <li>2. Selects radar interference rejector level; 3 provides highest degree of rejection.</li> <li>3. Turns noise rejector on/off.</li> <li>4. Turns echo stretch on/off.</li> <li>5. Selects presentation mode for CU or WPT-UP.</li> </ol>  |
| <p>● <b>NAV DATA MENU</b> ●</p> <p>Select item and option by ▲▼ keys.</p> <p>1. Navigator      <b>ALL</b> GPS LC</p> <p>2. Nav Data Disp <b>OFF</b> ON</p> <p>3. Pos Disp Mode <b>L/L</b> TD</p> <p>4. Depth Unit    <b>M</b> FA FT</p> <p>5. Temp Unit     <b>C</b> °F</p> <p>6. STBY Display <b>NORM</b> NAV</p> <p>.....</p> <p>Press HM-OFF to temporarily hide menu.</p> <p>&lt;Press MENU for main menu.&gt;</p>  | <ol style="list-style-type: none"> <li>1. Selects navigator among GPS, Loran C and all navigators available. In the "ALL" setting the radar selects a navigator in order of navigator accuracy—GPS, Loran and other.</li> <li>2. Turns navigation data display on/off.</li> <li>3. Selects position display format; latitude and longitude or Loran C TDs.</li> <li>4. Selects unit of measurement for depth; meters, feet or fathoms.</li> <li>5. Selects unit of water temperature measurement; °C or °F.</li> <li>6. Selects what to display during stand-by; navigation data (requires navigation input) and "STBY".</li> </ol> |
| <p>● <b>MODE &amp; FUNCTION MENU</b> ●</p> <p>Select item and option by ▲▼ keys.</p> <p>1. Window Display <b>Zoom</b> Wide</p> <p>2. Watchman      <b>OFF</b> 5' 10' 20'</p> <p>3. Alarm Mode    <b>IN</b> OUT</p> <p>4. VRM Unit      <b>NM</b> KM SM</p> <p>5. EBL Ref        <b>REL</b> TRUE</p> <p>6. Range           <b>1/8</b> 1/4 1/2 3/4 1 1.5</p> <p>                      2 <b>3</b> 4 6 8 12 16 24 36 48</p> <p>.....</p> <p>Press HM-OFF to temporarily hide menu.</p> <p>&lt;Press MENU for main menu.&gt;</p> | <ol style="list-style-type: none"> <li>1. Selects window display format; zoom or wide.</li> <li>2. Selects watchman interval among 5 min, 10 min and 20 min.</li> <li>3. Selects alarm mode; IN (alarm to targets entering the guard zone, or OUT (alarm to targets exiting the guard zone).</li> <li>4. Selects VRM unit; nm, km or sm.</li> <li>5. Selects EBL reference; relative to the ship's heading or true.</li> <li>6. Selects ranges to use. (At least two are selected.)<br/>Select range to enable (disable) and press [ENT] key.</li> </ol>  |
| Tuning  | Selects AUTO or MANUAL tuning.  |
| Self Check  | Checks the radar system for proper operation.   |

\* Default settings shown in reverse video.



## 2.14 The Window Display

The window display appears at the bottom left (or right) 1/4 of the display. Two types of window displays are available: zoom and wide. Zoom doubles the size of the area selected by the operator, and wide (range-up) compresses and displays the entire radar picture from the next higher range.

**Note 1:** The zoom display does not function on the 0.125 and 0.25 nm ranges.

**Note 2:** The wide display does not function on the 48 nm range.

### Selecting the type of window display

1. Press the [MENU] key.
2. Press the omnipad at 6 o'clock to select Mode & Function and press the [ENT] key.
3. Press the omnipad at 6 o'clock to select Window Display to Zoom or Wide as appropriate.
4. Press the [ENT] key followed by the [MENU] key.

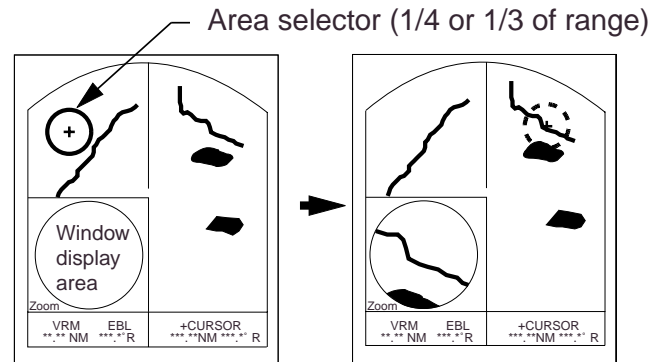
### Selecting the area for the zoom picture

1. Press the [DISP MODE] key to select the window display. The area selector, a solid circle, appears.
2. Use the omnipad to place the area selector on the area to zoom.

**Note:** When you place the area selector behind the window display, the window display shifts right (or left) so you may view the circle cursor.

3. Press the [ENT] key to confirm the zoom area in the window display. The area selector becomes a dashed circle and the cursor can be moved independently.

To reselect area to zoom, press [ENT] or [DISP MODE] and follow steps 2 and 3.



(1) Press [DISP MODE] to select the window display.

(2) Use the omnipad to select area to zoom and press [ENT].

Figure 2-12 How to select the area to zoom

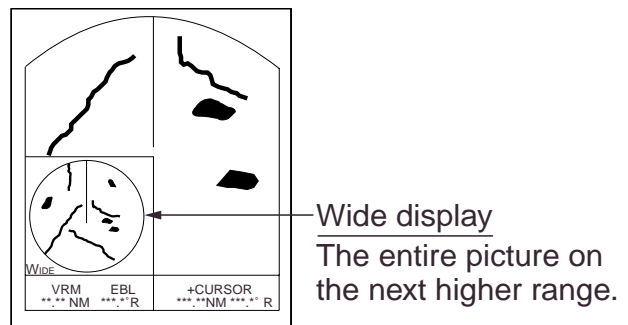
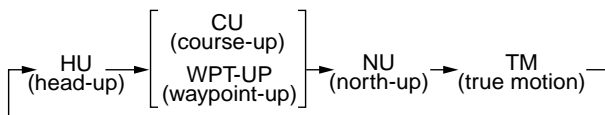


Figure 2-13 Example of wide display

## 2.15 Selecting the Presentation Mode

This radar provides four presentation modes: head-up, course-up (course-up or waypoint-up; selectable on menu), north-up and true motion (requires heading sensor). Press the [DISP MODE] and [HM OFF] keys together to select a presentation mode. Each time the keys are pressed, if heading signal is input to the radar, the presentation mode changes in the sequence of HU, CU (or WU), NU, TM. If there is no heading signal input to the radar, the presentation mode is always HU.

**Note:** TM does not function on the 48 nm range.



### Selecting course-up mode for CU or WPT-UP

You may select WPT-UP instead of CU on the menu.

#### CU (course-up)

An azimuth stabilized display in which a line connecting the center with the top of the display indicates own ship's intended course (namely, own ship's previous heading just before this mode has been selected).

Target pips are painted at their measured distances and in their directions relative to the intended course which is maintained at the 0-degree position while the heading line moves in accordance with ship's yawing and course change. This mode is useful to avoid smearing of picture during course change.

#### WPT-UP (waypoint-up)

An azimuth stabilized display in which the line connecting the center with the top of the display indicates the bearing to the "TO" waypoint, which is selected on the navigational equipment connected to the radar. When navigating a route and own ship enters the arrival zone of a waypoint, the radar displays the bearing to the next "TO" waypoint.

#### Procedure

1. Press the [MENU] key to open the menu.
2. Press the omnipad at 6 o'clock to select 2. P/L, IR, NR & Radar Mode.
3. Press the [ENT] key.
4. Press the omnipad at 6 o'clock to select Radar Mode.
5. Press the omnipad at 3 o'clock/9 o'clock to select the option CU or WPT-UP as desired.
6. Press the [ENT] key followed by the [MENU] key.

## 2.16 Guard Alarm

The guard alarm allows the operator to set the desired range and bearing for a guard zone. When ships, islands, landmasses, etc. enter (or exit, depending on type of guard zone in use) the guard zone an audible alarm sounds to call the operator's attention. The alarm is very effective as an anticollision aid when using an autopilot or navigating in narrow channels.

## CAUTION

The guard alarm is a useful anti-collision aid, but does not relieve the operator of the responsibility to also keep a visual lookout for possible collision situations. The alarm should never be used as the sole means for detecting possible collision situations.

### Selecting guard zone type

The guard alarm can be set to sound on targets entering (guard in) or exiting (guard out) the guard zone. Select type of guard zone as follows.

1. Press the [MENU] key to display the menu.
2. Press the omnipad at 6 o'clock to select Mode & Function and press the [ENT] key.
3. Press the omnipad at 6 o'clock to select Alarm Mode.
4. Press the omnipad at 3 o'clock/9 o'clock to select IN or OUT as appropriate.
5. Press the [ENT] key followed by the [MENU] key.

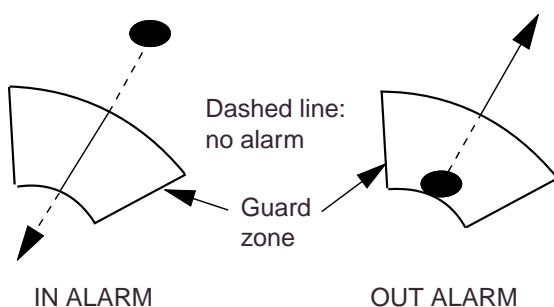


Figure 2-14 In and out alarms

### Setting the guard zone

1. Mentally create the guard zone you want to display. See Figure 2-15 (1).
2. Operate the omnipad to set cursor on top (bottom) left edge of the guard zone. Press the [GUARD] key. \*G (IN) (or G (OUT)), with asterisk blinking, appears at the top right-hand corner on the display. (The asterisk indicates the guard zone is partially set.) See Figure 2-15 (2).
3. Operate the omnipad to set cursor on bottom (top) right edge of the guard zone and press the [GUARD] key. The asterisk disappears. See Figure 2-15 (3).
4. Guard zone appears on the display. See Figure 2-15 (4).

### Silencing the audible alarm

Any ships, landmasses, etc. coming into (or going out of) the guard zone will trigger the audible alarm and display the guard zone in reverse video. You can silence the alarm by pressing the [GUARD] key. When this is done, G (ACKN) replaces G (IN) (or G (OUT)).

Press the [GUARD] key again to reactivate the alarm. G (IN) (or G (OUT)) replaces G (ACKN).

## Canceling the guard zone

Press and hold down the [GUARD] key until the guard zone disappears.

## Notes on the guard alarm

- When the radar range is less than one half of the guard zone range, the guard zone disappears from the display and G (IN) (or G (OUT)) is displayed in reverse video. If this happens, raise the range to redisplay the guard zone.
- A target echo does not always mean a landmass, reef, ships or surface objects but can imply returns from sea surface or precipitation. As the level of these returns varies with environment, the operator should properly adjust the STC, GAIN (sensitivity), A. C RAIN and FTC to be sure the alarm system does not overlook target echoes.

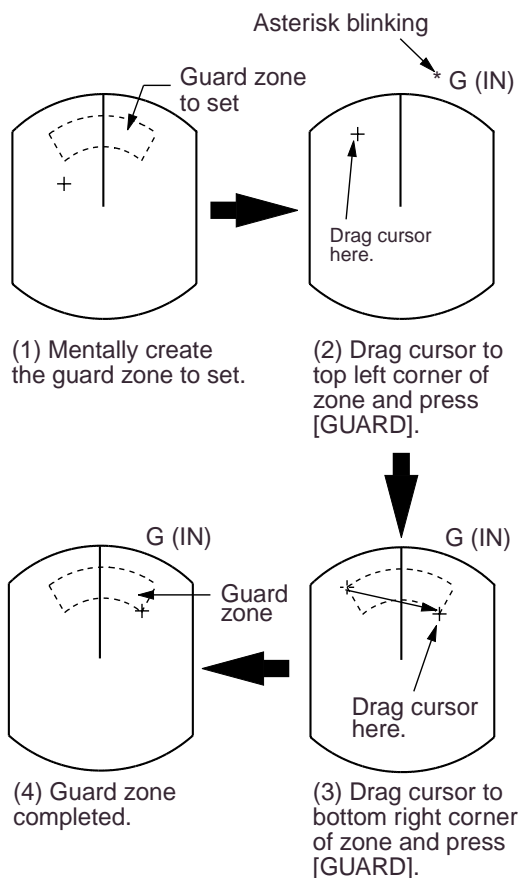


Figure 2-15 How to set a guard zone

## 2.17 Suppressing Radar Interference

Radar interference may occur when near another shipborne radar operating in the same frequency band as your radar. Its on-screen appearance is many bright dots either scattered at random or in the form of dotted lines extending from the center to the edge of the display. Figure 2-16 illustrates interference in the form of curved spokes. Interference effects are distinguishable from normal echoes because they do not appear in the same place on successive rotations of the antenna.

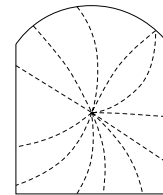


Figure 2-16 Radar interference

Four levels of interference are available, including off. 3 provides the highest level of rejection.

### Procedure

1. Press the [MENU] key.
2. Press the omnipad at 6 o'clock to select P/L, IR, NR & Radar Mode and press the [ENT] key.
3. Press the omnipad at 6 o'clock to select Int Reject.
4. Press the omnipad at 3 o'clock/9 o'clock to select level desired; 3 provides the greatest degree of interference rejection.
5. Press [ENT] and [MENU] keys.

IR appears at the top right corner on the display when the interference rejection circuit is turned on.

## 2.18 Suppressing Noise Interference

Noise interference appears on the screen as many bright dots. These dots can be suppressed by turning on the noise rejector. Note however that there are some forms of noise interference which this radar cannot suppress.

### Procedure

1. Press the [MENU] key.
2. Press the omnipad at 6 o'clock to select P/L, IR, NR & Radar Mode and press the [ENT] key.
3. Press the omnipad at 6 o'clock to select Noise Reject.
4. Press the omnipad at 3 o'clock/9 o'clock to select ON or OFF as appropriate.
5. Press the [ENT] key followed by the [MENU] key.

## 2.19 Selecting Pulselength

Pulselength is the transmission time of a single radar pulse. The longer the pulselength the greater the detection range capability, however range accuracy and range resolution are reduced.

Pulselength can be selected to short or long on the 1.5 and 3 nautical mile ranges.

1. Press the [MENU] key.
2. Press the omnipad at 6 o'clock to select P/L, IR, NR & Radar Mode and press the [ENT] key.
3. Press the omnipad at 6 o'clock to select Pulselength.

4. Press the omnipad at 3 o'clock/9 o'clock to select SHORT or LONG as appropriate.

5. Press [ENT] and [MENU] keys.

SP or MP for 1.5 NM range, or MP or LP for 3 NM range appears at the upper left-hand corner.

## 2.20 Off Centering the Display

**Note:** This function is not available on the 48 nm range.

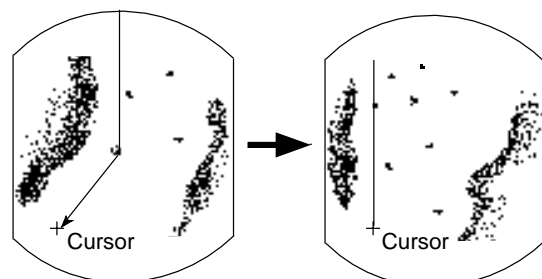
Your vessel's position can be shifted anywhere in the effective display area. The primary advantage of the off centered display is that for any range setting, the view ahead of your vessel can be extended without changing the range or size of targets.

### Procedure

1. Locate the cursor where you want to the screen center to be.
2. Press the [OFF CENTER] key.

OFF CENTER appears at the top left corner on the display when the display is off centered.

3. To cancel the off center display, press the [OFF CENTER] key again.



- (1) Place cursor where desired.
- (2) Press [OFF CENTER] key; cursor location becomes own ship's position.

*Figure 2-17 Off centering the display*



## 2.21 Echo Trails

You can show the trails of targets in afterglow. This function is useful for alerting you to possible collision situations.

### Starting echo trail

Press the [TRAIL] key to start the echo trail function. Afterglow starts extending from targets and "TRAIL" and the echo trail time appear at the top right-hand corner of the display. Press the key again within 3 seconds to select a different trail time, among 15 sec, 30 sec, 1 min, 3 min, 6 min, 15 min, 30 min, and continuous. In continuous plotting the time elapsed appears at the top right corner on the display.

**Note:** If the range is changed, trails are painted anew with the newly selected range.

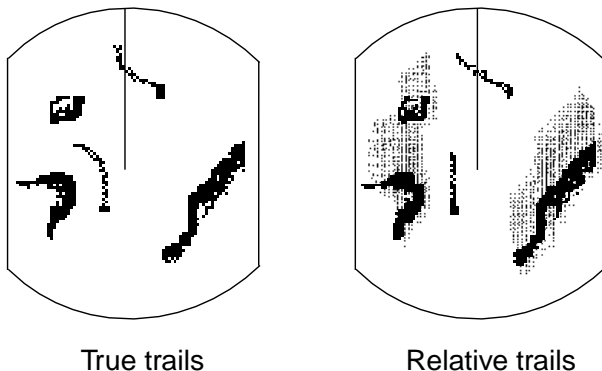


Figure 2-18 Appearance of echo trails

### Fixed time trails

When the elapsed time clock counts up to the trail time selected, the elapsed time display freezes. The oldest portions of trails are erased so only the latest trail, equal in length to the trail time selected, is shown. Then, trails start extending again. For example, the one minute trail time is selected. When the elapsed time display freezes at 60 seconds, all but the latest one minute of trails are erased and then trailing continues.

### Continuous trail

The maximum continuous trail time is 99 minutes and 59 seconds. When the elapsed time clock counts up to that time the elapsed time display is reset to zero, all trails are erased and then trailing is restarted.

### Adjusting brilliance of afterglow

The brilliance of the trails' afterglow can be set on the Backlight/Brilliance menu.

1. Press the [MENU] key.
2. Press the omnipad at 6 o'clock to select Backlight/Brilliance and press the [ENT] key.
3. Press the omnipad at 6 o'clock to select Echo Trail.
4. Select brilliance level, 1 or 2 as desired. 2 is the highest level.
5. Press the [ENT] key followed by the [MENU] key.

### Canceling echo trails

Press the [TRAIL] key to erase the TRAIL indication.

## 2.22 Navigation Data Display

Navigation data can be displayed at the screen bottom if this radar receives appropriate navigation input in NMEA 0183 format. Navigation data includes

- Position in latitude and longitude or Loran-C time differences (TDs)
- Bearing and range to a waypoint selected on the navigator
- Cross track error (XTE-the amount in nautical miles and the direction the vessel if off course)
- Depth
- Speed

If the navigation data includes the destination data, waypoint position is denoted on the radar display by a dashed ring.

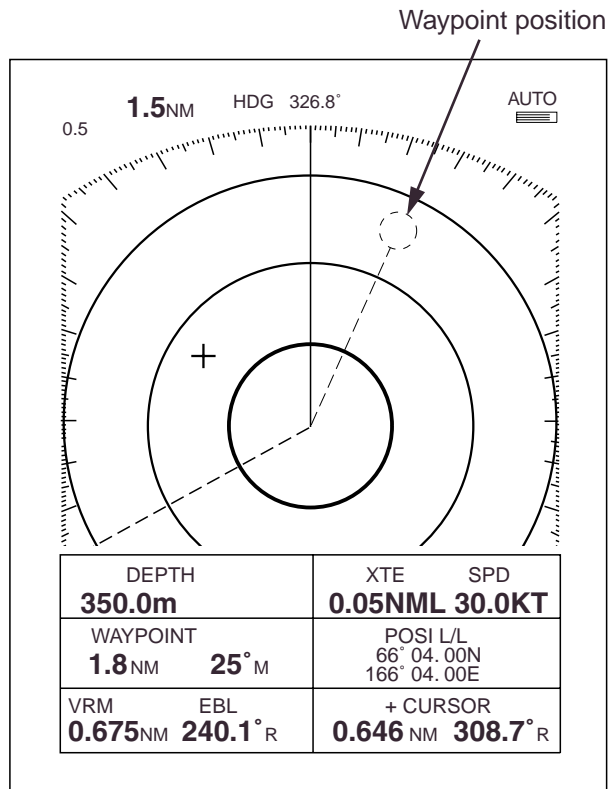


Figure 2-19 Sample nav data display

## Setting up the nav data display

1. Press the [MENU] key.
2. Press the omnipad at 6 o'clock to select Nav Data and press the [ENT] key.

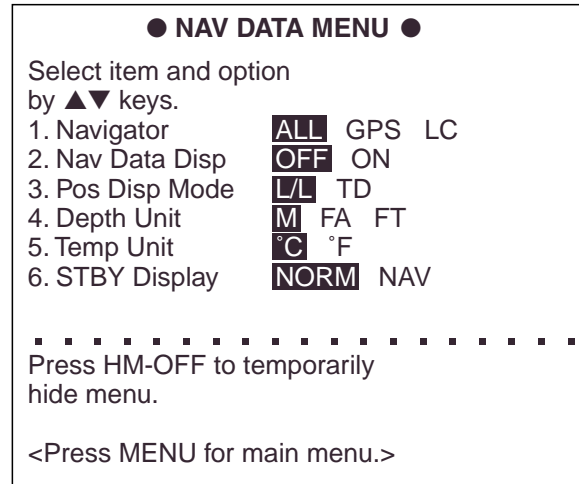


Figure 2-20 Nav data menu

3. Press the omnipad at 6 o'clock to select Navigator.
4. Press the omnipad at 3 o'clock/9 o'clock to select ALL, GPS or LC as appropriate and press the [ENT] key. (Select ALL if several navigators are connected to the radar. In this case, position data is selected in order of GPS, Loran C and other.)
5. Press the omnipad at 6 o'clock to select Nav Data Disp.
6. Press the omnipad at 3 o'clock/9 o'clock to select ON or OFF as appropriate and press the [ENT] key.
7. Press the omnipad at 6 o'clock to select Pos Disp Mode.
8. Press the omnipad at 3 o'clock/9 o'clock to select L/L (latitude and longitude) or TD (Loran C) as appropriate and press the [ENT] key.
9. Press the omnipad at 6 o'clock to select Depth Unit.

10. Press the omnipad at 3 o'clock/9 o'clock to select M (meters), FA (fathoms) or FT (feet) as desired and press the [ENT] key.
11. Press the omnipad at 6 o'clock to select Temp Unit.
12. Press the omnipad at 3 o'clock/9 o'clock to select °C or °F as desired and press the [ENT] key.
13. Press the omnipad at 6 o'clock to select STBY Display.
14. Press the omnipad at 3 o'clock/9 o'clock to select NORM (navigational data is not displayed) or NAV (navigational data is displayed as desired) and press the [ENT] key.
15. Press the [MENU] key to escape.

## 2.23 Echo Stretch (magnifying long range echoes)

Normally, the reflected echoes from long range targets appear on the display as weaker and smaller blips even though they are compensated by the radar's internal circuitry. To stretch long range echoes, in the range direction, turn on the echo stretch function.

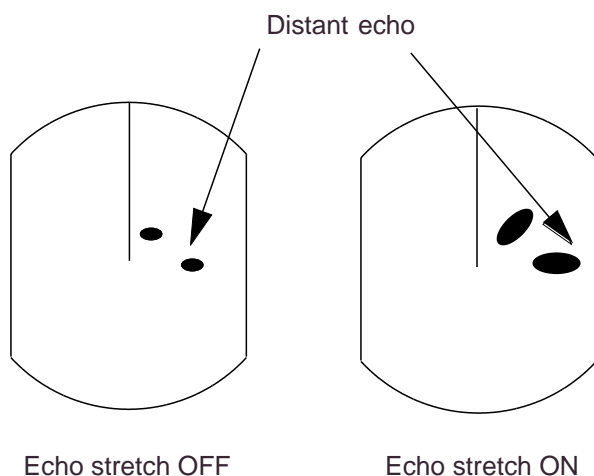


Figure 2-21 Echo stretch

## Turning echo stretch on or off

1. Press the [MENU] key.
2. Press the omnipad at 6 o'clock to select P/L, IR, NR & Radar Mode and press the [ENT] key.
3. Press the omnipad at 6 o'clock to select Echo Stretch.
4. Press the omnipad at 3 o'clock/9 o'clock to select ON or OFF as appropriate.
5. Press the [ENT] key followed by the [MENU] key. ES appears at the top right side on the display when the echo stretch feature is on.

**Note 1:** This function magnifies not only targets but also sea clutter and radar interference. For this reason be sure the controls for adjustment of sea clutter and radar interference are properly adjusted before activating the echo stretch.

**Note 2:** Echo stretch is inoperative on ranges from 0.125 to 0.5 nautical miles.

**Note 3:** When the echo stretch function is selected, the equipment automatically selects interference rejection level #3 and turns on the noise rejector. These can be turned off via the menu if desired.

## 2.24 Selecting Unit of Measurement for Range

The unit of measurement for the VRM and cursor can be nautical miles, kilometers, or statute miles. You may select unit desired as follows.

1. Press the [MENU] key.
2. Press the omnipad at 6 o'clock to select Mode & Function and press the [ENT] key.
3. Press the omnipad at 6 o'clock to select VRM Unit.
4. Press the omnipad at 3 o'clock/9 o'clock to select NM, KM, or SM as desired.
5. Press [ENT] followed by [MENU] key.

## 2.25 Selecting Bearing Reference

Bearing can be displayed relative to ship's heading (relative bearing) or relative to true north (true bearing) as follows. (True bearing requires heading sensor input.)

1. Press the [MENU] key.
2. Press the omnipad at 6 o'clock to select Mode & Function and press the [ENT] key.
3. Press the omnipad at 6 o'clock to select EBL Ref.
4. Press the omnipad at 3 o'clock/9 o'clock to select REL(ATIVE) or TRUE as appropriate.
5. Press the [ENT] key followed by the [MENU] key.

## 2.26 Watchman

### How watchman works

The watchman function periodically transmits the radar for about one minute to check for targets in a guard zone. If it finds change in the zone from the previous transmission it sounds the aural alarm, cancels the watchman function, and transmits the radar continuously. This feature is useful when you do not need the radar's function continuously but want to be alerted to radar targets in a specific area.

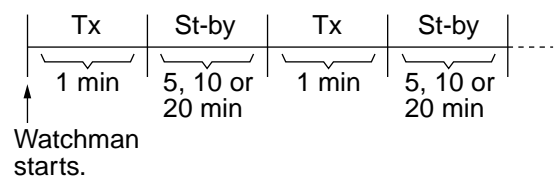


Figure 2-22 How watchman works

### Turning on watchman

1. Create a guard zone (usually 360 degrees) with the guard alarm function.
2. Press the [MENU] key.
3. Press the omnipad at 6 o'clock to select Mode & Function and press the [ENT] key.
4. Press the omnipad at 6 o'clock to select Watchman.
5. Press the omnipad at 3 o'clock/9 o'clock to select watchman rest interval (amount of time until next rotation of antenna); 5 minutes, 10 minutes or 20 minutes as desired.
6. Press the [ENT] key followed by the [MENU] key. Then, WATCHMAN appears, and the radar transmits for one minute and then goes into stand-by.

## Canceling watchman

1. Press the [MENU] key.
2. Press the omnipad at 6 o'clock to select Mode & Function and press the [ENT] key.
3. Press the omnipad at 6 o'clock to select Watchman.
4. Press the omnipad at 3 o'clock/9 o'clock to select OFF.
5. Press the [ENT] key followed by the [MENU] key.

## 2.27 Erasing the Heading Marker

The heading marker continuously appears on the display and shows your vessel's heading. When this mark obscures a target echo, you can temporarily erase it by pressing and holding down the [HM OFF] key. Release the key to redisplay the marker.

## 2.28 Deselecting Ranges

This radar has 16 ranges, some which you may not require. You can deselect up to fourteen ranges as follows.

1. Press the [MENU] key.
2. Press the omnipad at 6 o'clock to select Mode & Function and press the [ENT] key.
3. Select Range and press the [ENT] key. Active ranges appear in reverse video.
4. Press the omnipad at 3 o'clock/9 o'clock to select range to disable (or enable) and press the [ENT] key. Current selection is underlined.
5. Press the [ENT] key.

6. Repeat steps 4 and 5 to disable (or enable) other ranges.
7. When finished, press the [MENU] key.

## 2.29 Displaying Navigation Data During Stand-by

Various navigation data can be displayed during stand-by. A barometer is built in this radar; atmospheric pressure appears, in graph form, on the navigation data display during stand-by. If your navigation aid can output data in NMEA 0183 data format, your vessel's position in latitude and longitude, the range and bearing to waypoint, speed, course, date, time and cross track error may be input to this radar, and be seen in the bottom text area during stand-by. Further, with video sounder input, depth may be displayed, both digitally and in graph form.



### CAUTION

The barometer and depth displays are intended as reference. Any data displayed by them should be used with extreme caution.

### Procedure

1. Press the [MENU] key.
2. Press the omnipad at 6 o'clock to select the Nav Data and press the [ENT] key.
3. Press the omnipad at 6 o'clock to select STBY Display.
4. Press the omnipad at 3 o'clock/9 o'clock to select NAV and press the [ENT] key.
5. Press the [MENU] key.

**Note 1:** The depth display scale changes automatically with depth and the maximum depth is 1,000 meters.

**Note 2:** The barometer display is updated hourly, thus the data shown may not be the latest.

### ST-BY

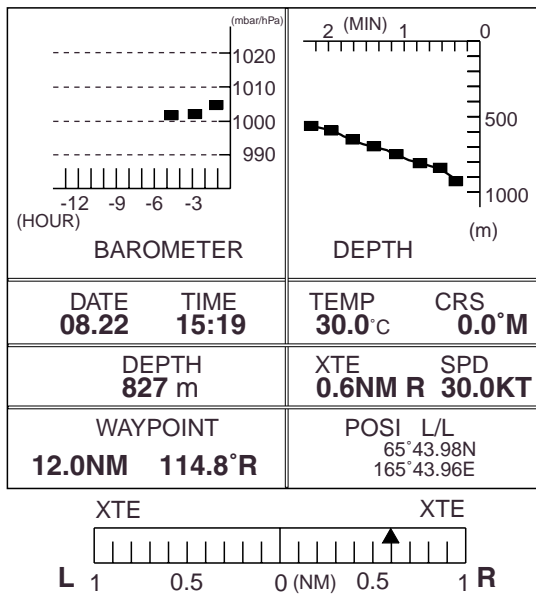


Figure 2-23 Navigation data display during stand-by

## 2.30 Outputting Cursor Position to Navigator

Cursor position (NMEA0183 data sentence TLL) can be output to the navigator connected to this radar by pressing and holding down the [HM OFF] key.

## 2.31 Displaying Cursor Position, Range and Bearing to Cursor

The cursor data indication at the bottom of the display can show cursor position in latitude and longitude or the range and bearing from own ship to the cursor. You can select the indication desired by pressing the [HM OFF] key.

Navigation data is required to display latitude/longitude position.

## 2.32 Visual Alarm Indications

This radar display various visual alarms to alert you to error.

Table 2-2 Visual alarm indications

| Error                     | Visual alarm               |
|---------------------------|----------------------------|
| No heading pulse          | HD SIG MISSING             |
| No bearing pulse          | BRG SIG MISSING            |
| Heading signal turned off | ***.* (appears as heading) |

The heading signal visual alarm may be cleared by pressing the [DISP MODE] key.

# 3. INTERPRETING THE DISPLAY

As an aid to navigation, radar can be a very valuable tool. No other electronic navigation aid can give you the ability to spot vessels coming at you in the fog, or tell you the location of the inlet to the harbor in the pitch black of night.

To help you understand what your radar can (and cannot) do for you this chapter covers

- the characteristics of the radar wave
- target properties and radar wave reflection
- range and bearing resolution, and
- false echoes.

## 3.1 The Radar Wave and Radar Horizon

### How the radar wave travels

The radar wave tends to travel in straight lines at the speed of light. However, it is subject to bending or refraction in the atmosphere, the amount depending on region and density.

### Super-refraction

Super-refraction is a condition in which there is an upper layer of warm dry air over a surface layer of cold, moist air. Radar waves bend downward and thus increase the ranges at which targets may be detected.

### Sub-refraction

Sub-refraction is the reverse condition of super-refraction; a layer of cold air is above a layer of warm air. Radar waves bend upward and thus decrease the ranges at which targets may be detected.

### Radar horizon

Radar is essentially a “line-of-sight” phenomenon. That means you have just about the same range to horizon with a radar as you do with your own eyes. However under normal atmospheric conditions, the radar horizon is 6% greater than the optical horizon. Therefore, if the target does not rise above the horizon the radar beam cannot be reflected from the target.

The distance to the horizon from the antenna, under normal conditions, is calculated by the following formula.

$$R_{max} = 2.2 \times \sqrt{h_1} + \sqrt{h_2}$$

Where  $R_{max}$ : Radar horizon (mile),  $h_1$ : Antenna height (meters),  $h_2$ : Target height (meters)

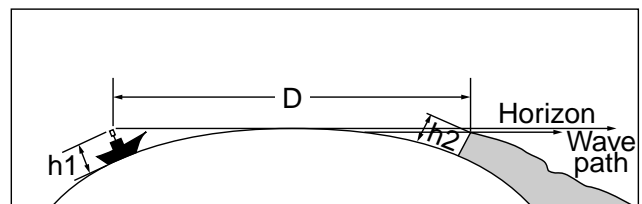


Figure 3-1 Radar horizon

### 3.2 Target Properties and Radar Wave Reflection

Generally, larger targets can be seen on the radar display at greater ranges, provided line-of-sight exists between the scanner and target. However, a large target with poor reflecting properties may not be detected as easily as a smaller target with better reflecting properties. For example, you might expect a lighthouse to be a good radar target because of its size. In actuality the return echo is weak since the conical shape diffuses most of the radiated energy.

A ship whose hull is made of conducting materials, such as steel, will return a relatively strong echo.

On the other hand, hulls made from wood or fiberglass return much weaker echoes.

Vertical surfaces, such as a cliff, are good targets provided they face the radar. Conversely, horizontal and smooth surfaces such as mudbanks, sandy beaches, and gently sloping hills make poor targets because they disperse rather than reflect most of the energy that strikes them.

The strongest radar echoes known come from built-up areas, docks, etc., because these targets are less subject to changes in aspect. These types of targets have three flat, smooth surfaces mutually at right angles. Some radar buoys are arranged this way so as to deliberately increase their detection range.

### 3.3 Range Resolution

Range resolution is a measure of the capability of a radar to display as separate pips the echoes received from two targets which are on the same bearing and are close together.

The main factor which affects range resolution is pulselength. Two targets on the same bearing, close together, cannot be seen as two distinct echoes on the display unless they are separated by a distance greater than one-half the pulselength.

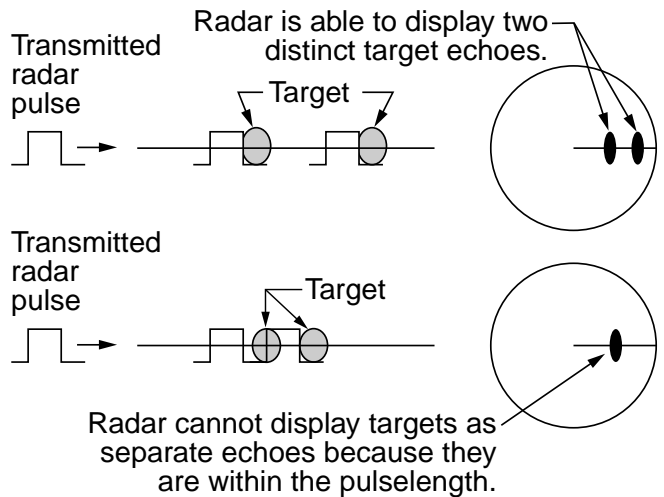


Figure 3-2 Range resolution

### 3.4 Bearing Resolution

Bearing resolution is a measure of the capability of a radar to display as separate targets the echoes received from two targets which are at the same range and are close together.

The principal factor which affects bearing resolution is horizontal beamwidth. Two targets at the same range must be separated by more than one beamwidth to appear as separate pips.



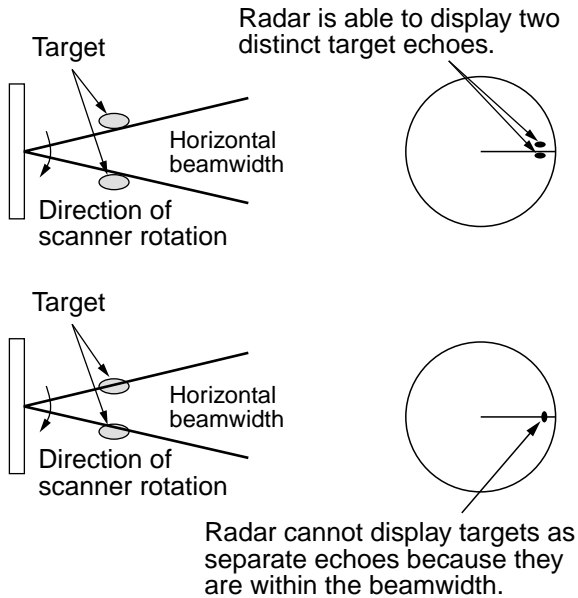


Figure 3-3 Bearing resolution

### 3.5 False Echoes

Occasionally false echoes appear on the screen at positions where there is no target. In some cases the effects can be reduced or eliminated. The operator should familiarize himself or herself with the appearance and effects of these false echoes, so as not to confuse them with echoes from legitimate contacts.

#### Multiple echoes

Multiple echoes occur when a short range, strong echo is received from a ship, bridge, or breakwater. A second, a third or more echoes may be observed on the display at double, triple or other multiples of the actual range of the target as shown in Figure 3-4. Multiple reflection echoes can be reduced and often removed by decreasing the sensitivity or properly adjusting the STC.

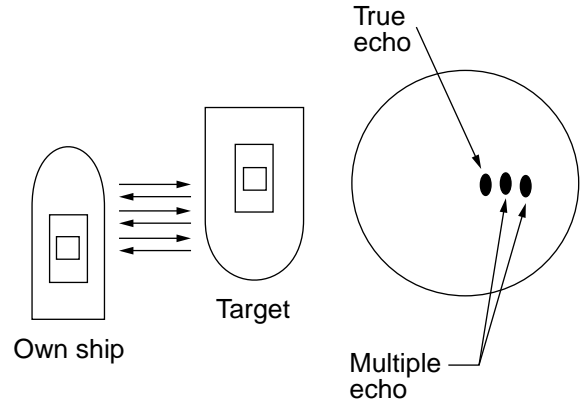


Figure 3-4 Multiple echoes

#### Side-lobe echoes

Every time the antenna rotates, some radiation escapes on each side of the beam-called "side-lobes." If a target exists where it can be detected by the side-lobes as well as the main-lobe, the side-lobe echoes may be represented on both sides of the true echo at the same range, as shown in Figure 3-5. Side-lobes show usually only at short ranges and from strong targets. They can be reduced through careful reduction of the sensitivity or proper adjustment of the STC.

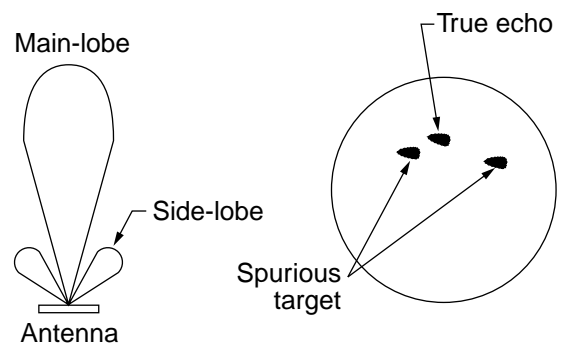


Figure 3-5 Side-lobe echoes

## Indirect echoes

Indirect echoes may be returned from either a passing ship or returned from a reflecting surface on your own ship, for example, a stack. In both cases, the echo will return from a legitimate contact to the antenna by the same indirect path. The echo will appear on the same bearing of the reflected surface, but at the same range as the direct echo. Figure 3-6 illustrates the effect of an indirect echo. Indirect echoes may be recognized as follows:

- they usually occur in a shadow sector
- they appear on the bearing of the obstruction but at the range of the legitimate contact
- when plotted, their movements are usually abnormal, and
- their shapes may indicate they are not direct echoes.

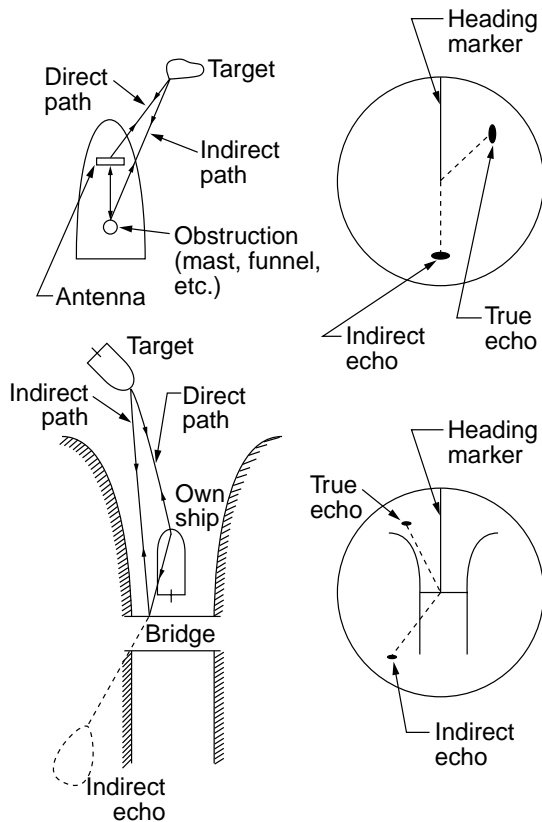


Figure 3-6 Indirect echoes

## Blind and shadow sectors

Funnels, stacks, masts, or derricks in the path of antenna may reduce the intensity of the radar beam. If the angle subtended at the antenna is more than a few degrees a blind sector may be produced. Within the blind sector small targets at close range may not be detected while larger targets at much greater ranges may be detected. See Figure 3-7.

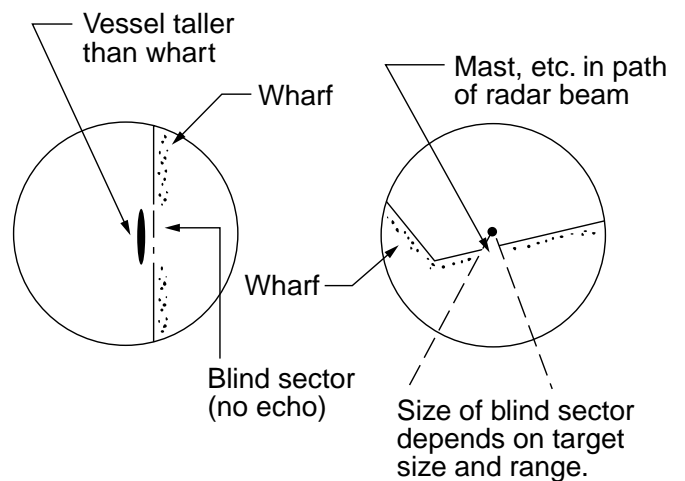


Figure 3-7 Blind and shadow sectors

## 3.6 SART

**Note:** The SART (Search and Rescue Transponder) information below is excerpted from IMO SN/Circ 197 Operation of Marine Radar for SART Detection.

A Search and Rescue Transponder (SART) may be triggered by any X-Band (3 cm) radar within a range of approximately 8 nm. Each radar pulse received causes it to transmit a response which is swept repetitively across the complete radar frequency band. When interrogated, it first sweeps rapidly ( $0.4 \mu\text{s}$ ) through the band before beginning a relatively slow sweep ( $7.5 \mu\text{s}$ ) through the band back to the starting frequency. This process is repeated for a total of twelve complete cycles. At some point in each sweep, the SART frequency will match that of the interrogating radar and be within the pass band of the radar receiver. If the SART is within range, the frequency match during each of the 12 slow sweeps will produce a response on the radar display, thus a line of 12 dots equally spaced by about 0.64 nautical miles will be shown.

When the range to the SART is reduced to about 1 nm, the radar display may show also the 12 responses generated during the fast sweeps. These additional dot responses, which also are equally spaced by 0.64 nm, will be interspersed with the original line of 12 dots. They will appear slightly weaker and smaller than the original dots.

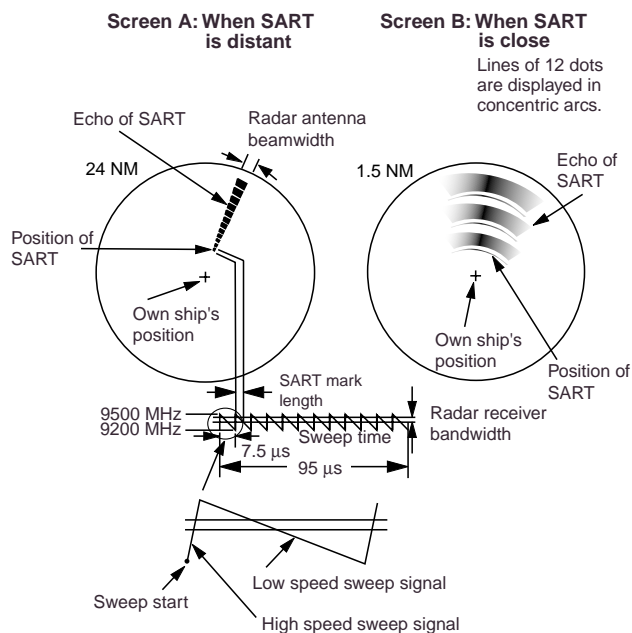


Figure 3-8 Appearance of SART signal on the radar display

### General procedure for detecting SART response

1. Use the range scale of 6 or 12 nm as the spacing between the SART responses is about 0.6 nm (1125 m) to distinguish the SART.
2. Turn off the automatic clutter suppression.
3. Turn off the Interference Rejector.

### General remarks on receiving SART

#### SART range errors

When responses from only the 12 low frequency sweeps are visible (when the SART is at a range greater than about 1 nm), the position at which the first dot is displayed may be as much as 0.64 nm beyond the true position of the SART. When the range closes so that the fast sweep responses are seen also, the first of these will be no more than 150 meters beyond the true position.

### **Radar bandwidth**

This is normally matched to the radar pulselength and is usually switched with the range scale and the associated pulselength. Narrow bandwidths of 3-5 MHz are used with long pulses on long range and wide bandwidths of 10-25 MHz with short pulses on short ranges.

Any radar bandwidth of less than 5 MHz will attenuate the SART signal slightly, so it is preferable to use a medium bandwidth to ensure optimum detection of the SART.

### **Radar side lobes**

As the SART is approached, sidelobes from the radar antenna may show the SART responses as a series of arcs or concentric rings. These can be removed by the use of the anti-clutter sea control although it may be operationally useful to observe the sidelobes as they may be easier to detect in clutter conditions and also they will confirm that the SART is near to the ship.

### **GAIN**

For maximum range SART detection the normal gain setting for long range detection should be used, that is, with background noise speckle visible.

### **STC control**

For optimum range SART detection, this control should be set to the minimum. Care should be exercised as a wanted target in sea clutter may be obscured. Note also that in clutter conditions the first few dots of the SART response may not be detectable, irrespective of the setting of the anti-clutter sea control. In this case, the position of the SART may be estimated by measuring 9.5 nm miles from the furthest dot back towards own ship.

Some sets have automatic/manual anti-clutter sea control facilities in which case the operator should switch to manual.

### **FTC control**

This should be used normally (to break up areas of rain) when trying to detect a SART response which, being a series of dots, is not affected by the action of the anti-clutter rain circuitry. Note that Racon responses, which are often in the form of a long flash, will be affected by the use of this control.

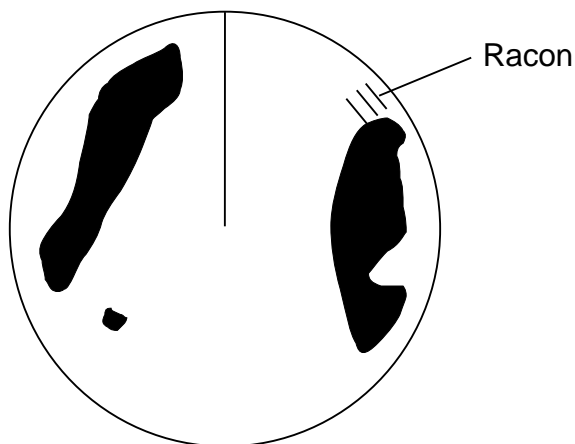
Some sets have automatic/manual anti-clutter rain control facilities in which case the operator should switch to manual.

When the range to the SART is reduced to about 1 nm, the radar display may show also the 12 responses generated during the fast sweeps. These additional dot responses, which also are equally spaced by 0.64 nm, will be interspersed with the original line of 12 dots. They will appear slightly weaker and smaller than the original dots.

### 3.7 Racon (Radar Beacon)

A racon is a radar transponder which emits a characteristic signal when triggered by a ship's radar (usually only the 3 centimeter band). The signal may be emitted on the same frequency as that of the triggering radar, in which case it is superimposed on the ship's radar display automatically.


The racon signal appears on the PPI as a radial line originating at a point just beyond the position of the radar beacon or as a Morse code signal (see figure below) displayed radially from just beyond the beacon.




*Figure 3-9 Appearance of racon signal on the display*


# 4. MAINTENANCE & TROUBLESHOOTING

This chapter tells you how to keep your radar in good working order. Before reviewing this chapter please read the safety information which follows.


WARNING



**Do not open the equipment.**  
Only qualified personnel should work inside the equipment.



**RF RADIATION HAZARD**  
The radar antenna emits high frequency radio radiation which can be harmful, particularly to your eyes. Never look directly into the antenna from a distance of less than 1 m when the radar is in operation as you could injure the cornea of your eyes. Always make sure the radar is set to stand-by or is turned off before starting work on the antenna unit.

## 4.1 Preventative Maintenance

Regular maintenance is important for good performance. Always keep the equipment as free as possible from dirt, dust, and water splashes. Make sure all screws securing the components are properly tightened.

A maintenance program should be established and should at least include the items listed in Table 4-1.

*Table 4-1 Recommended maintenance program*

| Period             | Item                                      | Check point  | Remarks  |
|--------------------|---|--|--|
| 3 to 6 months      | Exposed nuts and bolts on antenna unit    | Check for corroded or loosened nuts and bolts. If necessary, clean and repaint them thickly. Replace them if heavily corroded.   | Sealing compound may be used instead of paint. Apply a small amount of grease between nuts and bolts for easy removal in future.   |
|                    | Antenna radiator                          | Check for dirt and cracks on radiator surface. thick dirt should be wiped off with soft cloth dampened with fresh water. If a crack is found, apply a slight amount of sealing compound or adhesive as a temporary remedy, then call for repair. | Do not use plastic solvent (acetone) for cleaning. If you need to remove ice from antenna unit, use a wooden hammer or plastic head hammer. Crack on the unit may cause water ingress, causing serious damages to internal circuits. |
|                    | Terminal strips and plugs in antenna unit | Open antenna cover to check terminal strip and plug connections inside. Also check the rubber gasket of antenna covers for deterioration.  | When closing antenna covers in position, be careful not to catch loose wires between covers and unit.  |
|                    | LCD                                       | The LCD will, in time, accumulate a coating of dust which tends to dim the picture. Wipe LCD lightly with a soft cloth.  | Do not use chemical cleaners to clean any part of the display unit; they can remove paint and markings.  |
| 6 months to 1 year | Display unit connectors                   | Check for tight connection and corrosion.  | If corroded, contact your dealer for replacement.  |

## 4.2 Replacing the Fuse

The fuse in the power cable protects the equipment against reverse polarity of ship's mains, overcurrent, and equipment fault. If the fuse blows, find the cause before replacing it. Never use an incorrect fuse—serious damage to equipment may result and void the warranty.

24/32 VDC :5 A fuse  
12 VDC :10 A fuse

## 4.3 Troubleshooting

Table 4-2 contains simple troubleshooting procedures which you can follow to try to restore normal operation. If you cannot restore normal operation, do not attempt to check inside any unit of the radar system. Any repair work is best left to a qualified technician.

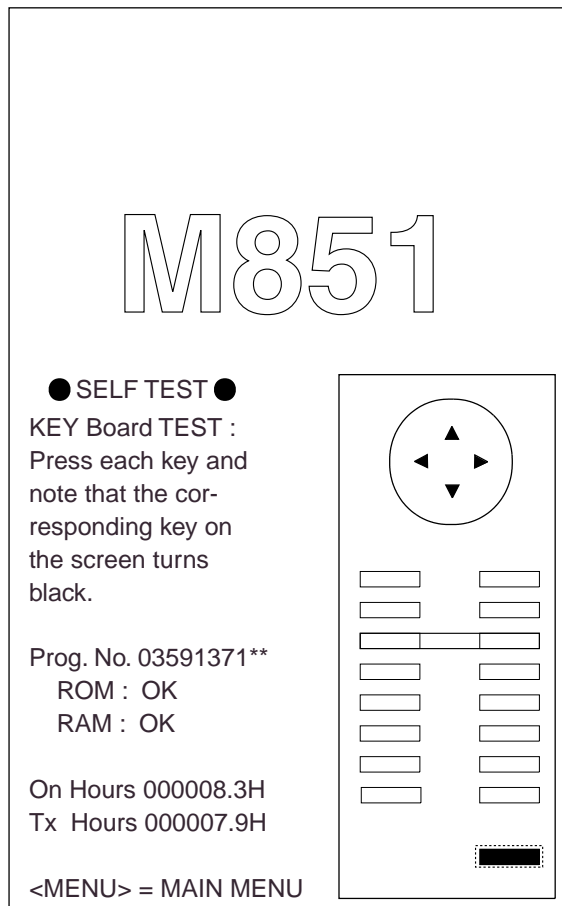
*Table 4-2 Troubleshooting table*

| <b>If...</b>  | <b>But...</b>   | <b>Then...</b>  |
|---|---|---|
| you pressed the [POWER] key to turn on the radar                      | the control panel does not light  | <ul style="list-style-type: none"> <li>• try adjusting the control panel backlighting on the Brilliance/Backlighting menu.</li> <li>• battery may have discharged.</li> <li>• check fuse in power cable.</li> </ul> |
|   | nothing appears on the display or display contrast is poor                                    | <ul style="list-style-type: none"> <li>• try adjusting the tone. (Extreme ambient temperature may affect display tone.)</li> </ul>  |
|   | characters are distorted  | <ul style="list-style-type: none"> <li>• request service.</li> </ul>  |
| the radar has warmed up and you pressed the [ST-BYTX] key to transmit | the antenna does not rotate   | <ul style="list-style-type: none"> <li>• the problem may be in antenna unit. Request service.</li> </ul>  |
|   | characters and indications are abnormal   | <ul style="list-style-type: none"> <li>• have a qualified technician check the set.</li> </ul>  |
| you have adjusted the gain with FTC and STC off                       | neither noise nor targets appear (indications and markers do)                                 | <ul style="list-style-type: none"> <li>• check signal cable for damage.</li> </ul>  |
|   | neither indications nor markers appear (noise and targets do)                                 | <ul style="list-style-type: none"> <li>• check signal cable for damage.</li> </ul>  |
|   | the sweep (radial line sweeping around the display) is not synchronized with antenna rotation | <ul style="list-style-type: none"> <li>• the problem may be in the antenna unit. Request service.</li> </ul>  |
|   | there is no change in sensitivity.  | <ul style="list-style-type: none"> <li>• request service.</li> </ul>  |
| a key is pressed  | nothing happens   | <ul style="list-style-type: none"> <li>• key may be faulty. Request service.</li> </ul>   |

## 4.4 Test

The self test facility checks the keyboard, ROM and RAM for proper operation. You may run the test as follows.

1. Press the [MENU] key.
2. Select Self Check. The following display appears.



\*\* : Program version no.

*Figure 4-1 Test screen*

3. To check the keyboard, press each key except the [MENU] key. Its corresponding location on the display lights in black if the key is operating properly.
4. To escape from the test, press the [MENU] key.

The ROM and RAM are automatically checked. If NG (No Good) appears to the right of ROM or RAM indication, contact your dealer for advice.

NMEA data can be displayed on the test screen as follows;

1. Press the [+] key. NMEA data appears on the upper half of the screen.
2. Press the [TONE] key to select input source; NAV, HDG or E/S.
3. To display the NMEA data over the entire screen, press the [-] key three times.
4. To erase the NMEA data, press the [+] key.

## 4.5 Replacing the Magnetron

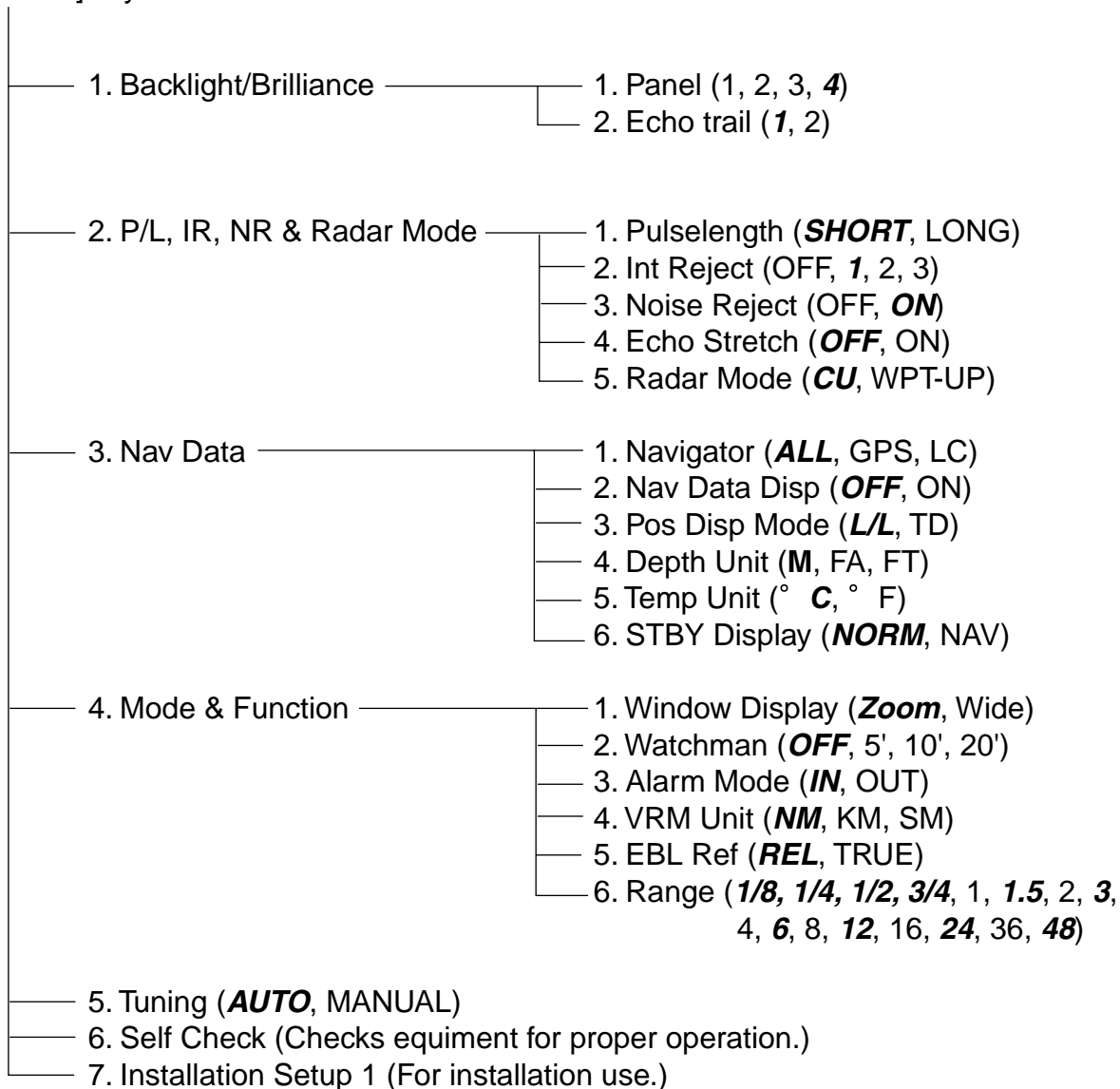
When the magnetron has expired distant targets cannot be seen on the display. When you feel long range performance has decreased contact a FURUNO agent or dealer about replacement of the magnetron.

Magnetron type: MG5248  
(Code No. 000-116-121)



# MENU TREE

[MENU] key



*Default settings shown in bold italic.*

## SPECIFICATIONS OF MARINE RADAR MODEL 851 MARK-2

### 1. GENERAL

(1) Indication System                      PPI Daylight display, raster scan, 4 tones in monochrome

(2) Range, Pulse Length (PL) & Pulse Repetition Rate (PRR)

| Range (nm)   | Pulse Length ( $\mu$ s) | PRR (Hz approx.) |
|--------------|-------------------------|------------------|
| 0.125 to 1.5 | 0.08                    | 2100             |
| 1.5 to 3     | 0.3                     | 1200             |
| 3 to 48      | 0.8                     | 800              |

(3) Range Resolution                      32 m

(4) Bearing Resolution                    2.7°

(5) Minimum Range                        27 m

(6) Bearing Accuracy                      Within  $\pm 1^\circ$

(7) Range Ring Accuracy                1 % of range or 8 m, whichever is the greater

### 2. SCANNER UNIT

(1) Radiator                                  Slotted wave-guide array

(2) Polarization                              Horizontal

(3) Antenna Rotation Speed                24 rpm nominal

(4) Radiator Length                        100 cm

(5) Horizontal Beamwidth                 2.4° nominal

(6) Vertical Beamwidth                     25° nominal

(7) Sidelobe Attenuation                 less than -24 dB, -30 dB outside of main-lobe

(8) Bearing Wind                            51.5 m/s (100 knots) relative

### 3. TRANSCEIVER MODULE

(1) Frequency and Modulation            9410 MHz  $\pm 30$  MHz (X band), P0N

(2) Peak Output Power                    4 kW nominal

(3) Modulator                                FET Switching Method

(4) Intermediate Frequency                60 MHz

(5) Tuning                                      Automatic

(6) Magnetron                                MG5248 or E3571/E3571A

(7) Receiver Front End                    MIC (Microwave IC)

(8) Bandwidth                                10 MHz

(9) Duplexer                                 Circulator with diode limiter

(10) Time of Heat-up                        90 seconds approx.

#### 4. DISPLAY UNIT

- (1) Picture Tube 8 inch rectangular monochrome LCD, 122.4 mm x 163.1 mm  
 (2) Effective Area 481(H) x 640(V) dots, Effective radar display area: 481 x 481 dots

(3) Range, Range Interval, Number of Rings

|                    |        |       |       |      |      |     |     |   |   |   |   |    |    |    |    |    |
|--------------------|--------|-------|-------|------|------|-----|-----|---|---|---|---|----|----|----|----|----|
| Range (NM)         | 0.125  | 0.25  | 0.5   | 0.75 | 1    | 1.5 | 2   | 3 | 4 | 6 | 8 | 12 | 16 | 24 | 36 | 48 |
| Ring Interval (NM) | 0.0625 | 0.125 | 0.125 | 0.25 | 0.25 | 0.5 | 0.5 | 1 | 1 | 2 | 2 | 3  | 4  | 6  | 12 | 12 |
| Number of Rings    | 2      | 2     | 4     | 3    | 4    | 3   | 4   | 3 | 4 | 3 | 4 | 4  | 4  | 4  | 3  | 4  |

- (4) Markers Heading Line, Bearing Scale, Range Rings,  
 Variable Range Marker (VRM), Electronic Bearing Line (EBL),  
 Tuning Bar, Alarm Zone,  
 Waypoint Mark (navigation input required)  
 North Mark (heading sensor input required)

- (5) Alphanumeric Indications Range, Range Ring Interval, Display Mode (HU),  
 Interference Rejection (IR), Variable Range Marker (VRM),  
 Electronic Bearing Line (EBL), Stand-by (ST-BY),  
 Guard Alarm (G(IN), G(OUT)), Echo Stretch (ES),  
 Range and Bearing to Cursor, \*Bearing or L/L Position,  
 Echo Tailing (TRAIL), Trailing Time, Trailing Elapsed Time,  
 Watchman (WATCHMAN), Zoomed Display (ZOOM)  
 \*Ship's speed (SPD), \*\*Water temperature, \*\*Water depth  
 \*: Navigation data required, \*\*: Echo sounder data required

- (6) Input Data IEC 61162-1 adopted  
 Own ship's position: GGA>RMA>RMC>GLL  
 Ship's speed: RMA>RMC>VTG>VBW  
 Bearing (True): HDT>HDG<sup>\*1</sup>>HDM<sup>\*1</sup>  
 Bearing (Magnetic): HDM>HDG<sup>\*1</sup>>HDT<sup>\*1</sup>  
 Course (True): RMA>RMC>VTG  
 Course (Magnetic): VTG>RMA  
 Waypoint (Range, Bearing): RMB>BWC>BWR  
 Loran time difference: RMA>GLC>GTD  
 Water depth DPT>DBK>DBS>DBT  
 Water Temperature MTW  
<sup>\*1</sup>: calculated by magnetic drift

- (7) Output Data  
 Alarm signal 12 VDC, 100 mA or less  
 Radar signal For radar remote display

## 5. POWER SUPPLY

- |                           |  |
|---------------------------|--|
| (1) Rated Voltage/Current | 12-24 VDC: 5.0-2.5 A                           |
| (2) Rectifier (option)    | 100/110/115/200/220/230 VAC, 1 phase, 50/60 Hz |

## 6. ENVIRONMENTAL CONDITION

- |  |  |
|--|--|
| (1) Ambient Temperature<br>(IEC 60945) | Scanner Unit: -25°C to +70°C<br>Display Unit: -15°C to +55°C |
| (2) Relative Humidity                  | 93 % ±2% at +40°C  |
| (3) Waterproofing<br>(IEC 60529)       | Scanner Unit: IPX6<br>Display Unit: IPX5                     |
| (4) Bearing Vibration                  | IEC 60945  |

## 7. COATING COLOR

- |                  |                                   |
|------------------|-----------------------------------|
| (1) Display Unit | Panel: N3.0, Chassis: 2.5GY5/1.5  |
| (2) Scanner Unit | N9.5 (upper), 2.5PB3.5/10 (lower) |

## 8. COMPASS SAFE DISTANCE

- |                  |                  |                  |
|------------------|------------------|------------------|
| (1) Display Unit | Standard: 0.70 m | Steering: 0.50 m |
| (2) Scanner Unit | Standard: 1.00 m | Steering: 0.75 m |

# INDEX

---

## A

A.C RAIN .....2-5

## B

BRILL key ..... 2-1, 2-3

Backlight/Brilliance menu .....2-9

Backlightings .....2-3

Bearing measurement .....2-7

Bearing resolution.....3-2

Blind and shadow sectors .....3-4

Illumination .....2-4

## C

Curse-up mode.....2-12

Control panel .....2-1

Cursor .....2-2

Cursor position .....2-21

Cursor range.....2-2

## D

DISP MODE key..... 2-1, 2-10-2-11

Display mode.....2-10

## E

EBL..... 2-2, 2-7

EBL reference.....2-19

EBL key ..... 2-1, 2-7

ECHO key..... 2-1, 2-4

ENT key.....2-1

Echo stretch.....2-18

Echo trail.....2-16

## F

FTC ..... 2-4-2-6, 3-6

Fuse ..... 4-2

## G

GUARD key.....2-1, 2-13

GAIN .....2-4, 3-6

Guard alarm .....2-12-2-14

## H

HM OFF key.....2-1, 2-21

Heading marker .....2-2, 2-20

Head-up mode ..... 2-12

## I

Indirect echoes..... 3-4

## M

MENU key..... 2-1

Maintenance ..... 4-1

Menu .....2-8-2-9

Menu tree.....A-1

Mode & Function menu..... 2-9

Multiple echoes ..... 3-3

## N

Nav Data menu ..... 2-9

Navigation data ..... 2-17

Noise rejection ..... 2-15

## O

OFF CENTER key .....2-1, 2-15

Omnipad..... 2-1

## **P**

|                             |      |
|-----------------------------|------|
| P/L, IR, & Radar menu ..... | 2-9  |
| POWER key .....             | 2-1  |
| Post Disp Mode .....        | 2-17 |
| Pulselength .....           | 2-15 |

## **R**

|                        |          |
|------------------------|----------|
| RANGE key .....        | 2-1, 2-3 |
| RINGS key.....         | 2-1, 2-6 |
| Radar horizon .....    | 3-1      |
| Radar wave .....       | 3-1      |
| Range                  |          |
| Measuring .....        | 2-6      |
| Selecting .....        | 2-3      |
| Range resolution ..... | 3-2      |

## **S**

|                            |     |
|----------------------------|-----|
| ST-BY TX key.....          | 2-3 |
| STC .....                  | 2-4 |
| Self test.....             | 4-3 |
| Side-lobe echoes.....      | 3-3 |
| Sub-refraction .....       | 3-1 |
| Super-refraction.....      | 3-1 |
| System configuration ..... | v   |

## **T**

|                       |           |
|-----------------------|-----------|
| Tone .....            | 2-3       |
| TONE key .....        | 2-1, 2-3  |
| TRAIL key.....        | 2-1, 2-16 |
| Troubleshooting ..... | 4-2       |
| Tuning.....           | 2-6       |

## **V**

|               |          |
|---------------|----------|
| VRM.....      | 2-2, 2-7 |
| VRM key ..... | 2-1, 2-7 |

## **W**

|                      |      |
|----------------------|------|
| WPT-UP mode.....     | 2-12 |
| Watchman .....       | 2-19 |
| Wide display.....    | 2-11 |
| Window Display ..... | 2-11 |

## **Z**

|                   |      |
|-------------------|------|
| Zoom display..... | 2-11 |
|-------------------|------|

**FURUNO®****FURUNO ELECTRIC CO., LTD.**

9-52 Ashihara-Cho, Nishinomiya City, 662-8580, Hyogo, Japan

Tel: +81 798-65-2111 Fax: +81 798-65-4200

Pub NO. DOC-281

# Declaration of Conformity 0560

We **FURUNO ELECTRIC CO., LTD.**-----  
(Manufacturer)

9-52 Ashihara-Cho, Nishinomiya City, 662-8580, Hyogo, Japan

-----  
(Address)

declare under our sole responsibility that the product

LCD radar Model 851 MARK-2  
(Serial No. 4302-0001)-----  
(Model name, serial number)

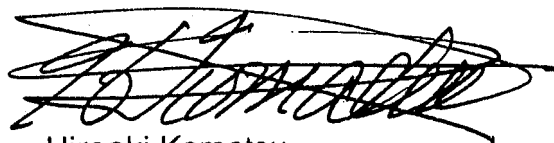
is in conformity with the essential requirements as described in the Directive 1999/5/EC of the European Parliament and of the Council of 9 March 1999 on radio equipment and telecommunications terminal equipment (R&amp;TTE Directive) and satisfies all the technical regulations applicable to the product within this Directive

EN 60945: 1997-01 (IEC 945 Third edition: 1996-11)  
KSR 142, Annex 1: October 1985-----  
(title and/or number and date of issue of the standard(s) or other normative document(s))

For assessment, see

- Statement of Opinion N° 00214046/AA/00 of 8 August 2000 issued by KTL Certification, The Netherlands
- Test report FLI 12-00-016 of 9 June, 2000 and FLI 12-00-017 of 12 June 2000 prepared by Furuno Labotech International Co., Ltd.

On behalf of Furuno Electric Co., Ltd.

Hiroaki Komatsu  
Manager,  
International Rules and RegulationsNishinomiya City, Japan  
August 22, 2000-----  
(Place and date of issue)-----  
(name and signature or equivalent marking of authorized person)

## Free Manuals Download Website

<http://myh66.com>

<http://usermanuals.us>

<http://www.somanuals.com>

<http://www.4manuals.cc>

<http://www.manual-lib.com>

<http://www.404manual.com>

<http://www.luxmanual.com>

<http://aubethermostatmanual.com>

Golf course search by state

<http://golfingnear.com>

Email search by domain

<http://emailbydomain.com>

Auto manuals search

<http://auto.somanuals.com>

TV manuals search

<http://tv.somanuals.com>