



# FURUNO®

## Dual Frequency, High Definition Black Box Video Sounder Models FCV-1200BB

- Furuno Free Synthesizer (FFS) Transceiver design allows use of the following User-Selectable operating frequencies (15/28/38/50/88/107/200 kHz)
- Select virtually any size non-interlaced, VGA or higher PC monitor CRTs, as well as flat panel color LCDs (VGA – 640 x 480)
- FFS Transceiver provides future expansion capabilities and convenient retrofit of existing echo sounder systems using existing transducers
- Software programmable selection of display aspect ratio; Portrait (vertical) or Landscape (horizontal)
- Unique split range control allows independent range settings in dual-frequency mode
- Alarms for water depth, fish echoes and water temperature
- Max phased range of 1200 ft. at 1, 2 or 3 kW RMS Output
- Displays echoes in 8 or 16 colors
- Selectable background colors including light blue, blue, black or white
- Shared monitor utilization of Radar and PC systems with standard PC monitor switching system
- “All Glass”, balanced and symmetrical bridge layout when multiple equivalent PC monitors are employed
- Sounder video distribution to a vessel’s television system, or multiple external monitors is possible with standard PC monitor converters and distributors



# SPECIFICATIONS OF FCV-1200BB

- 1. Non-Interlaced, Multisync PC Monitor (Owner Supplied)**  
Virtually any size including, 15", 17", 20", 21" and 28" CRTs, as well as Flat Panel LCDs (VGA640 x 480 or higher)
- 2. Display Modes** Single (LF or HF), Dual, Triple Zoom, Bottom-lock Expansion, Mix and A-scope
- 3. Basic Ranges** Any ranges customized between 5-2000 m  
Foot, Fathom Passi/Braza may be selected  
**Marker Zoom/Bottom-lock Expansion Ranges:** 5-200 m  
**Range Phasing:** Up to 4000 m (Max depth: 2000 m)  
**Zoom Ranges:** 5-200 m (preset on menu)
- 4. Pulselength and Pulse Repetition Rate**  
0.2-5.0 ms, 20-3000 pulses/min
- 5. Picture Advance** 0, 1/16, 1/8, 1/4, 1/2, 1 or 2 lines/tx
- 6. Data Interface** (NMEA0183 Ver. 1.5 or 2.0; Any talker)  
Inputs: GGA, GLC, GLL, GTD, MTW, RMA, RMC, VTG  
Outputs: SDDBS, SDDBT, SDDPT, SDTLL, YCMTW\*  
*\*Optional sensor required*  
*Depth data of fishing gear and water temperature using a FURUNO Net Sounder.*
- 7. Alarms** Audio-visual alarms for water depth, fish echoes and water temperature\*  
*\*Optional sensor required*
- 8. Other Features** Automatic bottom tracking, Interference rejecter, Threshold, Water temperature graph\*, Picture memory/recall  
*\*Optional sensor required*
- 9. TX Output Power**  
1, 2 or 3 kW RMS (depending on transducer types)
- 10. Operating Frequencies**  
The synthesized transceiver works with two frequencies from 10 to 200 kHz. Specify transducer type when ordering for 15/28/38/50/88/107 or 200 kHz.

## POWER SUPPLY

12-32 VDC, 120 W max. 115/230 VAC with optional rectifier

## ENVIRONMENTAL CONDITIONS (IEC 60945 TESTING)

Display Unit: -15°C to +55°C

Water Resistance: IEC IPX5

## EQUIPMENT LIST

### Standard

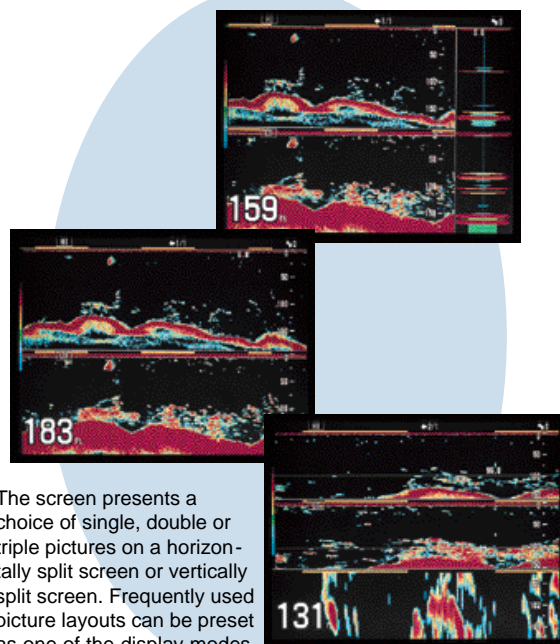
- |  |         |        |
|--|---------|--------|
| 1. Control Unit                                    | CV-1201 | 1 Unit |
| 2. Processor Unit                                  | CV-1203 | 1 Unit |
| 3. Installation materials and standard spare parts |         | 1 Set  |
| 4. Interface box                                   | IF-8000 | 1 Unit |

### Optional

- Non-Interlaced, Multi-sync PC Monitor (SXGA1280 x 1024)
- Temperature sensor  
T-02MSB (thru-hull bronze), T-02MTB (transom bronze), T-03MSB (thru-hull bronze detachable)
- Rectifier RU-1746B-2
- EX-IF Board with connector
- Transducer switch box EX-7
- Data Recorder MT-12 (EX-7 required)
- Echo sounder interface VI-1100A
- External Transceiver ETR-5D/10D
- Transducer (Specify the frequency and type of transducer)
  - 1 kW: 15F-4S (15 kHz), 28F-8 (28 kHz), 50B-6/6B (50 kHz), 50B/9/9B (50 kHz), 50F-8G (50 kHz), 88B-8 (88 kHz), 200B-5S (200 kHz)
  - 2 kW: 15F-10 (15 kHz), 28F-18 (28 kHz), 50B-12 (50 kHz), 88B-10 (88 kHz), 200B-8/8 (200 kHz), 200B-8N (200 kHz)
  - 3 kW: 15F-10 x 2 (15 kHz), 28F-24H (28 kHz), 50F-24H (50 kHz), 88F-126H (88 kHz), 100B-10R (107 kHz), 200B-12H (200 kHz)

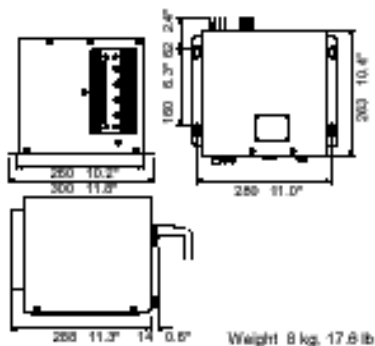
SPECIFICATIONS SUBJECT TO CHANGE WITHOUT NOTICE

## FLEXIBLE SCREEN LAYOUTS

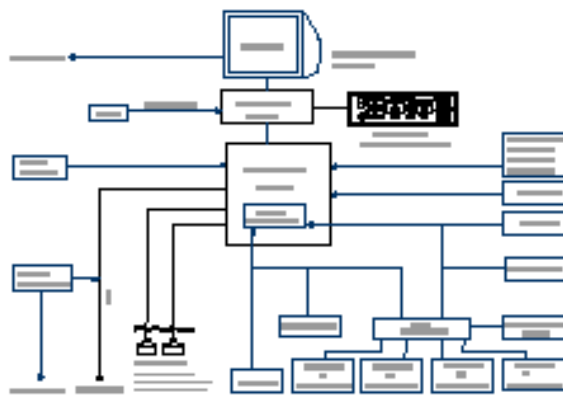


The screen presents a choice of single, double or triple pictures on a horizontally split screen or vertically split screen. Frequently used picture layouts can be preset as one of the display modes. In the dual-frequency mode, the split range feature is available - echograms in different depth segments by high and low frequencies are visible side by side.

## PROCESSOR UNIT



## INTERCONNECTION DIAGRAM



## Free Manuals Download Website

<http://myh66.com>

<http://usermanuals.us>

<http://www.somanuals.com>

<http://www.4manuals.cc>

<http://www.manual-lib.com>

<http://www.404manual.com>

<http://www.luxmanual.com>

<http://aubethermostatmanual.com>

Golf course search by state

<http://golfingnear.com>

Email search by domain

<http://emailbydomain.com>

Auto manuals search

<http://auto.somanuals.com>

TV manuals search

<http://tv.somanuals.com>