



Regal Series Step Up Hot Plate

Item: _____
 Quantity: _____
 Project: _____
 Approval: _____
 Date: _____

Regal Series Step Up Hot Plate

Models:

- RHPR-24 RHPR-36 RHPR-48



Model RHPR-36

Standard Features:

- Stainless steel front, landing ledge and sides
- 24" (610mm) - 48" (1219mm) widths with four to eight open burners
- Heavy duty removable drip pan
- Standing pilot for instant lighting
- Bowl style grate configuration
- 20,000 BTU/hr per burner - natural gas
- 17,500 BTU/hr per burner - propane gas
- Individual burner control
- 4" (102mm) legs with adjustable feet
- 3/4" rear gas connection
- 3/4" gas regulator
- One year parts and labor warranty

Optional Features:

- Stainless steel stand with intermediate shelf
 Swivel casters on stand

Specification:

Shall be U.S. Range Regal Step Up Hot Plate. Model _____ with a total BTU/hr rating of _____ when used with natural/propane gas. Finish is to be stainless steel front and sides.



Model	Description (W xD)	Total BTU Natural Gas	Total BTU Propane Gas
RHPR-24	4 Open Burners 24"(605mm) x 27-1/4"(794mm)	80,000	70,000
RHPR-36	6 Open Burners 36"(914mm) x 27-1/4"(794mm)	120,000	105,000
RHPR-48	8 Open Burners 48"(1219mm) x 27-1/4"(794mm)	160,000	140,000

Garland Commercial Industries, LLC
 185 East South Street
 Freeland, PA 18224
 Phone: (570) 636-1000
 Fax: (570) 636-3903

Garland Commercial Ranges Ltd
 1177 Kamato Road,
 Mississauga, Ontario
 L4W 1X4 CANADA
 Phone: 905-624-0260
 Fax: 905-624-5669

Enodis UK LTD
 Swallowfield Way,
 Hayes, Middlesex
 UB3 1DQ ENGLAND
 Telephone: 081-561-0433
 Fax: 081-848-0041

Enodis®

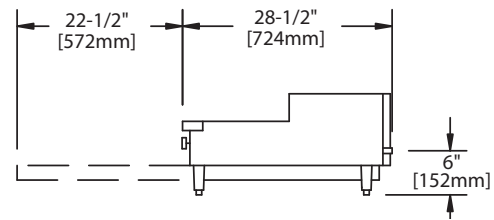
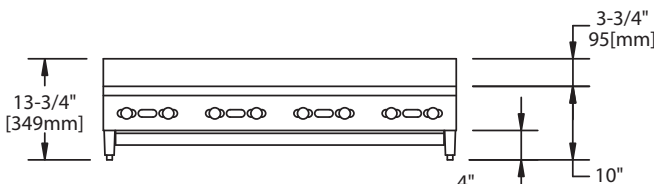
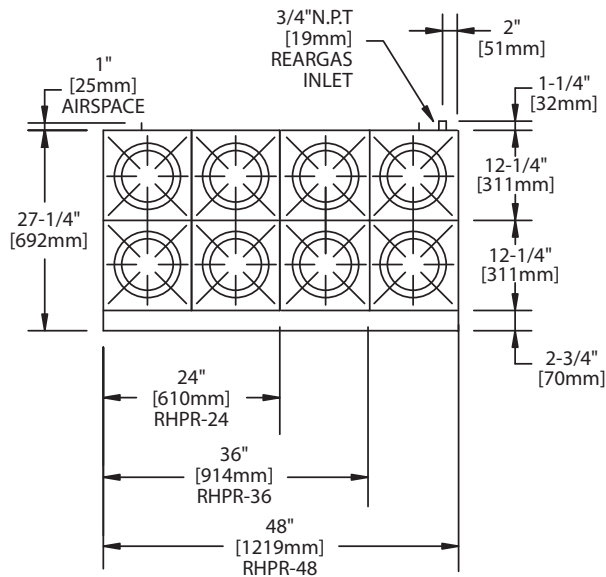
Specifications				Total BTU		
Model #	Dimensions: In. (mm)			No. of Burners	Natural Gas	Propane Gas
	Width	Depth	Height			
RHPR-24	24(605)	27-1/4(794)	13(330)	4	80,000	70,000
RHPR-36	36(914)	27-1/4(794)	13(330)	6	120,000	105,000
RHPR-48	48(1219)	27-1/4(794)	13(330)	8	160,000	140,000

Many local codes exist and it is the responsibility of the owner and installer to comply with those codes.

Garland/U.S. Range products are not approved or authorized for home or residential use, but are intended for commercial applications only. Garland / U.S. Range will not provide service, warranty, maintenance or support of any kind other than in commercial applications.

Shipping Information		
Model#	Weight Lb/Kg	Cu Ft
RHPR-24	138/61	8.0
RHPR-36	191/87	25.0
RHPR-48)	247/112	33.0

Operating Pressure All Models			
Natural Gas		Propane	
"WC	Mbar	"WC	Mbar
5	12.5	10	25



Form# RHPR (06/07)

Garland Commercial Industries, LLC
185 East South Street
Freeland, PA 18224
Phone: (570) 636-1000
Fax: (570) 636-3903

Garland Commercial Ranges Ltd
1177 Kamato Road,
Mississauga, Ontario
L4W 1X4 CANADA
Phone: 905-624-0260
Fax: 905-624-5669

Enodis UK LTD
Swallowfield Way,
Hayes, Middlesex
UB3 1DQ ENGLAND
Telephone: 081-561-0433
Fax: 081-848-0041

Free Manuals Download Website

<http://myh66.com>

<http://usermanuals.us>

<http://www.somanuals.com>

<http://www.4manuals.cc>

<http://www.manual-lib.com>

<http://www.404manual.com>

<http://www.luxmanual.com>

<http://aubethermostatmanual.com>

Golf course search by state

<http://golfingnear.com>

Email search by domain

<http://emailbydomain.com>

Auto manuals search

<http://auto.somanuals.com>

TV manuals search

<http://tv.somanuals.com>