

BlueChart®

g2

marine cartography

© Copyright 2006 Garmin Ltd. or its subsidiaries

Garmin International, Inc.

1200 East 151st Street, Olathe, Kansas 66062, USA

Tel: 913/397.8200 or 800/800.1020, Fax: 913/397.8282

e-mail: cartography@garmin.com

Garmin (Europe) Ltd.

Unit 5, The Quadrangle, Abbey Park Industrial Estate, Romsey, SO51 9DL, UK

Tel.+44 (0) 870.8501241 (outside the UK)

0808 2380000 (UK only)

Fax 44/0870.8501251

email: cartography.europe@garmin.com

Garmin Corporation

No. 68, Jangshu 2nd Road, Shijr, Taipei County, Taiwan

Tel: 886/2.2642.9199, Fax: 886/2.2642.9099

All rights reserved. Except as expressly provided herein, no part of this manual may be reproduced, copied, transmitted, disseminated, downloaded or stored in any storage medium, for any purpose without the express prior written consent of Garmin. Garmin hereby grants permission to download a single copy of this manual onto a hard drive or other electronic storage medium to be viewed and to print one copy of this manual or of any revision hereto, provided that such electronic or printed copy of this manual must contain the complete text of this copyright notice and provided further that any unauthorized commercial distribution of this manual or any revision hereto is strictly prohibited.

Information in this document is subject to change without notice. Garmin reserves the right to change or improve its products and to make changes in the content without obligation to notify any person or organization of such changes or improvements. Visit the Garmin Web site (www.garmin.com) for current updates and supplemental information concerning the use and operation of this and other Garmin products.

Garmin[®], BlueChart[®], BlueChart g2[®], GPSMAP[®], and MapSource[®] are registered trademarks or trademarks of Garmin Ltd. or its subsidiaries and may not be used without the express permission of Garmin.

microSD[™] and SD[™] are trademarks of SanDisk Corporation, registered in the United States and other countries.

Portions of BlueChart data may be subject to the following copyrights and notices:

© 2005 MapTech, Inc.

The chart information in this product is reproduced, in whole or part, with the permission of the following national hydrographic offices and other organizations: Australian Hydrographic Service; Editrice Incontri Nautici (Bolina); Hydrographic Institute of the Republic of Croatia; Kort & Matrikelstyrelsen, Denmark, license no. G-9-2002; Estonian Maritime Administration (EMA) © 2006; Finland Hydrographic Office, license no. FMA 877/721/2004; Service Hydrographique et Océanographique de la Marine (SHOM, www.shom.com), France, Contract n° E 67/2005; Bundesamt für Seeschifffahrt und Hydrographie (BSH), Germany, license no. 8095-01/2004-02 0A03; © Her Majesty in Right of Canada, Department of Fisheries and Oceans (2006), 20060101-G; Great Barrier Reef Marine Park Authority (GBRMPA); Hellenic Navy Hydrographic Service (Greece), license no. 171.7/22/03; Hydrographica chart data contained in this product is © 2005-2006 Hydrographica; © Copyright Icelandic Coast Guard Hydrographic Department, (2004-2006). All rights reserved, license no. IS AC-001-Garmin; Imray Laurie Norie & Wilson Ltd. UK; Istituto Idrografico della Marina, Italy; Maritime Administration of Latvia (LHS) © 2006; Maritime Safety Queensland and is © State of Queensland. All rights reserved; Netherlands Hydrographic Office 2005-2006, license no. NL AC-002-Garmin; Land Information New Zealand (Crown copyright reserved); Norwegian Hydrographic Service, license no. NO24/021001/1; © Copyright National Hydrographic Office, Sultanate of Oman (2005-2006), OM AC-001-Garmin. All rights reserved; © Copyright Instituto Hidrográfico de Portugal, (2003-2006), PT AC-002-Garmin. All rights reserved; Lewis Offshore Ltd. (© 2003-2006); Russian Hydrographic Office; South Africa Hydrographic Office; © Copyright Instituto Hidrográfico de la Marina, Spain, (2003-2006), ES AC-001-Garmin; Swedish Maritime Administration, license no. 03-01453; and © British Crown Copyright, (2001-2006), GB AC-002-Garmin. All rights reserved. Wavey Line charts are produced, in part, from products and with the agreement of Wavey Line Ltd.

This product has been derived in part from material obtained from the UK Hydrographic Office with the permission of the UK Hydrographic Office, Her Majesty's Stationery Office and the following authorities: Hydrographic Department of the Icelandic Coast Guard, Netherlands Hydrographic Office, National Hydrographic Office, Sultanate of Oman, Instituto Hidrográfico de Portugal, Instituto Hidrográfico de la Marina, Spain.

This product has been derived in part from material obtained from the UK Hydrographic Office with the permission of the UK Hydrographic Office, Her Majesty's Stationery Office and the following port authorities for United Kingdom: Aberdeen Harbour Board, Associated British Ports (includes Ayr & Troon, Barrow, Cardiff & Barry, Fleetwood, Garston, Ipswich, King's Lynn, Lowestoft, Newport, Plymouth, Silltho, Southampton, Swansea & Port Talbot, and Teignmouth), Cattewater Harbour Commissioners (Cattewater, Plymouth), Chichester Harbour Conservancy, Clydeport Operations Limited, Cromarty Firth Port Authority, Cowes Harbour Commission, Dart Harbour and Navigation Authority, Dover Harbour Board, Falmouth Harbour Commissioners, First Corporate Shipping Limited (Bristol), Fowey Harbour Commissioners, Fraserburgh Harbour Commissioners, Gloucester Harbour Trustees, Harwich Haven Authority, Heysham Port Limited, Imerys Minerals Ltd (Par), Inverness Harbour Trust (Inverness, Inverness Firth), King's Lynn Conservancy Board, Langstone Harbour, Larne Harbour Limited (Larne, Cairnryan), Littlehampton Harbour Board, Londonderry Port and Harbour Commissioners, Manchester Ship Canal Company, Medway Docks and Harbour Company Limited, Mersey Docks & Harbour Company (Mersey, Liverpool, Birkenhead), Milford Haven Port Authority, Montrose Port Authority, Newhaven Port and Properties Limited, Orkney Islands Council, Padstow Harbour Commissioners, PD Teesport (excluding Bathymetry data), Poole Harbour Commissioners, Port of Boston Limited, Port of London Authority, Port of Sunderland, Port of Tyne Authority (Tyne), Port of Wisbech Authority, Port of Workington, Portland Harbour Authority Limited, Ports of Truro & Penryn, Portsmouth Commercial Port, Seaham Harbour Dock Company, Scrabster Harbour Trust (Scrabster), Shetland Islands Council, Shoreham Port Authority, Stena Line Ports Limited (Fishguard, Fleetwood, Holyhead, Stranraer), Teignmouth Harbour Commission, Thanet District Council (Ramsgate), Torbay Council Marine Services (Tor Bay; Torquay, Brixham, Paignton), Warrenpoint Harbour Authority, Weymouth & Portland Borough Council, and Whitstable Harbour. For Channel Islands: Jersey Harbours and States of Guernsey Harbour Authority. For Isle of Man: Isle of Man Harbours Division. For Republic of Ireland: Bantry Bay Harbour Commissioners, Drogheda Port Company, Dublin Port Company, Dun Laoghaire Harbour Company, and Port of Cork Company. © The British Crown, 2001-2006. All rights reserved.

Some data and information contained in these Products are © Commonwealth of Australia, Australia Hydrographic Service, Maritime Safety Queensland and is © State of Queensland, Certain zoning information in this product is © Great Barrier Reef Marine Park Authority; and is used under license with the permission of the Great Barrier Reef Marine Park Authority. All rights reserved. Apart from the uses permitted to the licensee under the license, the information may not be modified or exploited by reverse engineering of formats and encryption or copied, reproduced, translated, or reduced to any electronic medium or machine readable form, in whole or part, without the prior written consent of the Great Barrier Reef Marine Park Authority, the Maritime Safety Queensland and © 2002-2006 Her Majesty the Queen in Right of Canada, Canadian Hydrographic Service / Sa Majesté du chef en Canada, Service Hydrographique du Canada and/or Nautical Data International, Inc. Garmin International, Inc. is an authorized user and licensee of selected Australia Hydrographic Service data products under licensing agreement 0548FL and Nautical Data International Inc. data products under Licensing Agreement number 240502001-001/2 and 021704-087. Apart from the uses permitted to the licensee under the Licensing Agreements, the information may not be modified or exploited by reverse engineering of formats or encryption or copied, reproduced, translated or reduced to any electronic medium or machine readable form, in whole or part.

Reeds Almanacs port services data contained in this product is © 2004-2006 Adlard Coles Nautical. Certain port services data contained in this product is © 2005-2006 Batmagasin, Certain port services data contained in this product is © 2006 Boatlaunch Ltd., © 2005-2006 BLOC MARINE Almanac & Cruising Guide, © 2004-2006 Bolina - Editrice Incontri Nautici, © 2005-2006 Gasthamsguiden SXK AB, and © 2005-2006 Kort & Matrikelstyrelsen. The Explorer Charts logo is a registered trademark of Lewis & Clark Ltd., publishers of the Explorer Chartbook series. Photos courtesy of © 2006 CMT Group 1, Inc. and Garmin International, Inc.

** BlueChart g2 does not contain photos for all cards. Garmin is continuing to expand our growing database of navigationally significant photos
** Navteq road data is included for many BlueChart g2 data cards. Not all data cards contain road data.

** WhereisTM Map data is included in Australia BlueChart g2 data cards. Whereis © 2006 Telstra Corporate Limited and its licensors.

WARNING:No national hydrographic office has verified the information in this product or quality assured it, and none accept liability for the accuracy of reproduction or any modifications made thereafter. No national hydrographic office makes any warranties or representations, express or implied, with respect to this product. No national hydrographic office warrants that the product satisfies national or international regulations regarding the use of the appropriate products for navigation or that it contains the latest hydrographic information available.

WARNING:All charts are digitized directly from existing government and other official charts and should not be used solely for navigation. Digital charts are intended to be used as an aid to traditional navigational charts, not as a replacement. Only official government charts and notices to mariners contain all information needed for the safety of navigation, and as always, the captain is responsible for their prudent use. A prudent navigator never relies on any single source of navigational information. Garmin strives to provide its customers with the most economical, accurate and up-to-date electronic maps available. However, features are continually changing, so the data may not reflect the latest modifications and/or additions in your area. Garmin makes no warranty as to the accuracy or completeness of the map data.

WARNING:Garmin BlueChart data and bottom information are for navigation reference only, as bottom conditions are continually changing. This product is for general reference.

WARNING:Some of the information in this product may have been produced, in part or whole, from withdrawn national hydrographic office products. New charts and/or NTM corrections will render this product obsolete and inaccurate.

WARNING:The Great Barrier Reef Marine Park Authority (“the Authority”) does not check the information in this product and accepts no liability for the accuracy of copying or for any modifications that may have been made to the information which it has supplied. Use of and entry to the Great Barrier Reef Marine Park is controlled by the Great Barrier Reef Marine Park Act 1975 (Cth) (“the Act”). Penalties apply for use of or entry to a zone for a purpose other than for a purpose permitted under the Great Barrier Reef Marine Park Zoning Plan 2003 (“the Zoning Plan”) prepared by the Authority pursuant to section 32 of the Act. This product does not contain all information concerning permitted use or entry under the Zoning Plan. For purposes of use of or entry to the Great Barrier Reef Marine Park, this product should only be used in conjunction with the Zoning Plan and the Great Barrier Reef Marine Park Regulations 1983 (Cth). For purposes of navigation, users should consult official navigation charts released by relevant government authorities.

WARNING:The Licensee is hereby advised of the Canadian carriage regulations applicable to Canadian ships in all waters and to all ships in waters under Canadian jurisdiction which requires the master and owner of every ship to: have on board, in respect of each area in which the ship is to be navigated, the most recent editions of the charts, documents; or to have sufficient knowledge of specific information, such that safe and efficient navigation in the area where the ship is to be navigated is not compromised.

WARNING:The tide and current predictions derived from this software are not to replace the Canadian Tide and Current Tables, which are required under the Charts and Nautical Publications Regulations of the Canada Shipping Act and which must be used for navigation within Canadian waters. Official Canadian Tide and Current Tables are available from authorized chart dealers. For a complete list of dealers in your area, please contact:

Chart Distribution Office
Canadian Hydrographic Service
615 Booth Street
Ottawa, Ontario, K1A 0E6
Telephone: (613) 998-4931
Fax: (613) 998-1217
Email: chs_sales@dfo-mpo.gc.ca
WEB: www.charts.gc.ca

Although CHS produces the tide and current constituent data used in this software with the greatest care, neither Canada, its ministers, officers and employees, nor CHS, who individually and collectively shall hereinafter be referred to as “Canada”, make any representation or warranty, either express or implied, concerning the accuracy of the Canadian data, or that it is suitable for any particular application or purpose. In no event will Canada be liable for any damages whatsoever, including but not limited to loss of revenue or profit, lost or damaged data, and expenses, arising in any way from or consequential upon the use of, or the inability to use this Canadian tide and current constituent data.

Tide and current predictions derived from this software may not be used commercially without a license from Canadian Hydrographic Service, Department of Fisheries and Oceans. Please contact the Canadian Hydrographic Service’s Chart Distribution Office at the above address for more information.



INTRODUCTION

BlueChart® g2 is Garmin's exclusive line of highly-detailed marine cartography, which comes preloaded for the coastal United States on Garmin's GPSMAP® 492/498 chartplotters, the large-display GPSMAP 2200 series, and GPSMAP 3200 series of chartplotters. BlueChart g2 cartography features smoother layering and better integration of map graphics for faster redraws and more cohesive panning, scrolling, and zooming. It features richer colors and shading for easier interpretation and improved visibility. BlueChart g2 has all the detail of traditional BlueChart, but with additional functions, such as an optional "mariner's-eye view" map perspective.

With the addition of BlueChart g2 preprogrammed data cards, you can access coastal roads and points of interest (POIs) as well as a growing worldwide database of high-quality navigationally significant photos. These photos give "real picture" detail for many harbors, ports, marinas and coastal features.



BlueChart g2 cartography features a growing database of aerial photography to give mariners a visual overview of harbors, marinas, waterways, and other points of reference.

Additional BlueChart g2 enhancements include:

- Shaded depth contours
- Mariner's eye view map perspective
- Port plans and navigationally significant photos (Preprogrammed data card only)
- Improved IALA symbology
- Intertidal zones with spot soundings
- Nav aids with view range and coverage
- Data on tides and currents
- Coastal roads, marinas, points of interest (Preprogrammed data card only)
- Wrecks, restricted areas, anchorages
- Shoals, spoilage, and more

Like all BlueChart cartography, BlueChart g2 cartography is styled to match the appearance of paper charts when displayed on your Garmin chartplotter. Sharp, colorful, finely detailed graphics let you see every cartographic contour and feature, with a minimum of panning and zooming to bring the chart data into focus.

TABLE OF CONTENTS

Introduction	v
Terminology	viii
Warning	viii
Getting Started	1
Installing a BlueChart g2 Preprogrammed Data Card	3
Viewing BlueChart g2 Information	4
Understanding BlueChart g2 Data	4
Accessing Additional Object Information	6
Viewing Photos	7
Accessing Paper-Chart-Specific Information	8
Understanding the Differences Between Electronic and Paper Charts	9
Reporting Chart Errors	9
Viewing Tide and Current Information	10
Appendix	11
Caring for Your BlueChart g2 Data Card	11
Reading the ID Code on a BlueChart g2 Card	11
Exclusive Garmin Programs	12
Purchasing BlueChart g2 Cards.....	12
Warranty Information	13
Product Registration	13
Contact Garmin	13
Index	14
BlueChart® g2 Data Card Order Form	15



Warning

Failure to avoid the following potentially hazardous situations could result in an accident or collision resulting in death or serious injury.

When navigating, carefully compare BlueChart g2 information to all available navigation sources, including information from visual sightings, and paper maps. For safety, always resolve any discrepancies or questions before continuing navigation.

Use the electronic BlueChart g2 cartography only to facilitate, not to replace, the use of authorized government charts. Official government charts and notices to mariners contain all information needed to navigate safely.

Terminology

This guide uses the following terminology:

- **Card**—Preprogrammed Garmin data card.
- **Garmin unit**—Garmin GPS unit or Garmin chartplotter.
- **Preloaded**—Garmin unit loaded with BlueChart g2 of the Coastal United States.
- **Preprogrammed**—Garmin data card loaded with a region of BlueChart g2 containing additional features such as aerial photos and coastal roads.

GETTING STARTED

BlueChart g2 data is available in two formats:

- **Preloaded on your Garmin chartplotter**—coverage includes the coastal United States and contains all the detail of traditional BlueChart and some of the previously listed additional functions ([page ii](#)).
- **Preprogrammed Garmin data card**—coverage is expanded beyond the coastal United States and regions are available throughout the rest of North and South America as well as Europe (Atlantic) and Asia (Pacific). Garmin BlueChart g2 preprogrammed data cards contain additional data including highly detailed coastal roads and points of interest such as restaurants, lodging, local attractions and more. Full-color aerial photos of ports, marinas, bridges, and navigational landmarks are also included on many BlueChart g2 preprogrammed data cards (see [page 2](#) for a visual comparison).



NOTE: Garmin BlueChart g2 preprogrammed data cards work only with BlueChart g2 compatible Garmin units. Look for the BlueChart g2 compatible logo on the product packaging.



Current owners of Garmin GPSMAP 276, GPSMAP 376, GPSMAP 3005C, GPSMAP 3006C, and GPSMAP 3010C chartplotters can also use BlueChart g2 preprogrammed data cards after loading a required software update.

The first screen shows preloaded BlueChart g2 cartography on a GPSMAP 3210. The second screen shows the same area with a BlueChart g2 preprogrammed data card.



BlueChart g2 Preloaded on a Chartplotter



BlueChart g2 Preprogrammed Data Card

Installing a BlueChart g2 Preprogrammed Data Card

Look for a compartment door or rubber weather cap on the bottom (or front for large chartplotters) of your Garmin unit. Beneath the door or weather cap is a slot for a data card.



**Data Card Slot on a
GPSMAP 3206/3210**



**Data Card Slot on a
GPSMAP 492/498**

To insert the card, place the card into the slot (connector end first) with the label facing toward the front of the Garmin unit. When the card is in place, close the compartment door, or reinsert the rubber weather cap. See your Garmin unit owner's manual for specific card installation instructions.



Caution

Insert the connector end of the card into the card slot. Improper installation can result in damage to your Garmin unit and can void your warranty.



Caution

BlueChart g2 Preprogrammed Data Card Caution: Do NOT use preprogrammed BlueChart g2 data cards for saving MapSource maps. The preprogrammed data will be lost. Remove any BlueChart g2 cards in your Garmin unit before transferring MapSource maps to the unit to avoid losing the preprogrammed data. If you overwrite the preprogrammed data on a BlueChart g2 card, Garmin will NOT replace or recover the lost data.




VIEWING BLUECHART g2 INFORMATION

BlueChart g2 technology for the coastal United States (including Alaska and Hawaii) is preloaded on Garmin's GPSMAP 492 and GPSMAP 498 chartplotters, as well as its large- display GPSMAP 2200 series and GPSMAP 3200 series of chartplotters.

To access additional BlueChart g2 functionality, you can purchase preprogrammed data cards. These BlueChart g2 data cards include highly detailed coastal roads and points of interest such as restaurants, lodging, local attractions, and more. Full-color aerial photos of ports, marinas, bridges, and navigational landmarks are also included on many data cards. See [page 7](#) for information on viewing photos while using a preprogrammed data card.

Understanding BlueChart g2 Data

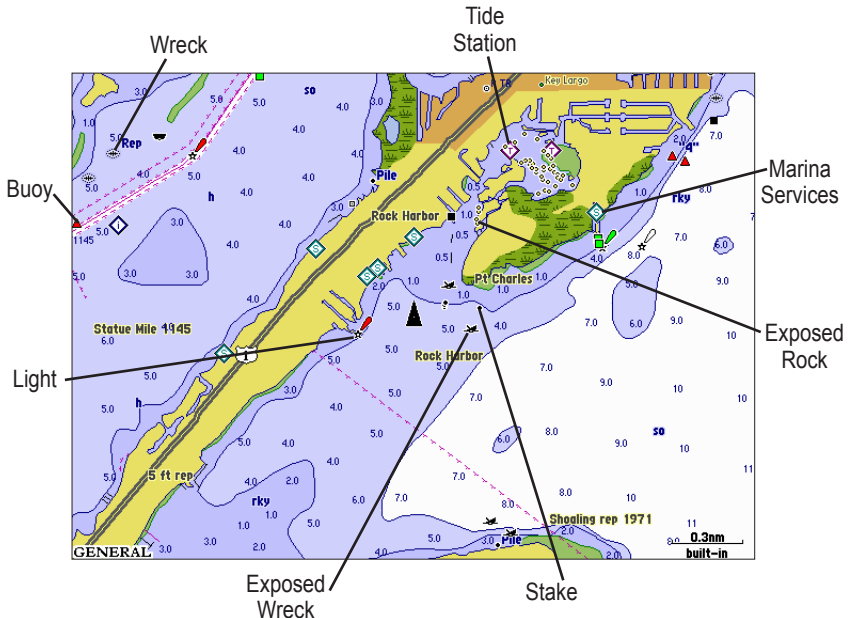
BlueChart g2 electronic charts use graphic symbols to denote map features. Some common symbols you might see include, but are not limited to, the following*:

	Airport/Seaplane Base		Dangerous Rock		Pilot Boarding Area
	Anchorage Berth		Explosive		Precautionary Area
	Anchoring Prohibited		Exposed Rock		Radio Report Point
	Beacon		Exposed Wreck		Recommended Anchorage
	Building		Fishing Harbor		Rescue Station
	Buoy		Fishing Prohibited		Tide Station
	Church		Information		Yacht Harbor
	Current Station		Marina Services		

*Some symbols might appear differently on your Garmin chartplotter.

Other features common to most BlueChart g2 data include:

- Depth contour lines (with deep water represented in white)
- Inter-tidal zones
- Spot soundings, as depicted on the original paper chart
- Navigational aids and symbols
- Obstructions and cable areas



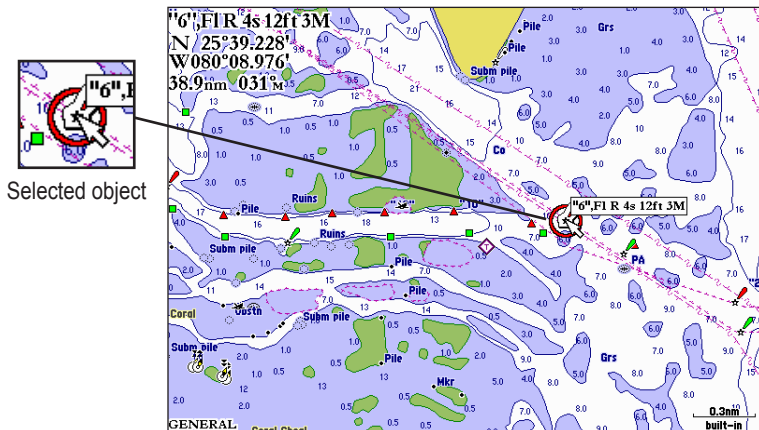
Garmin includes charts and symbols shown on NOAA chart 1, and marine services from other sources. For more information about nautical chart symbols in the USA, see *Chart No. 1 Nautical Chart Symbols Abbreviations and Terms* at www.noaa.com.

Accessing Additional Object Information

You can view additional information about many of the objects you see on a BlueChart g2 map.


To access additional object information when using a Garmin unit:

Place the unit's map pointer on an object, and press **ENTER**. A window appears with additional information for the selected object.




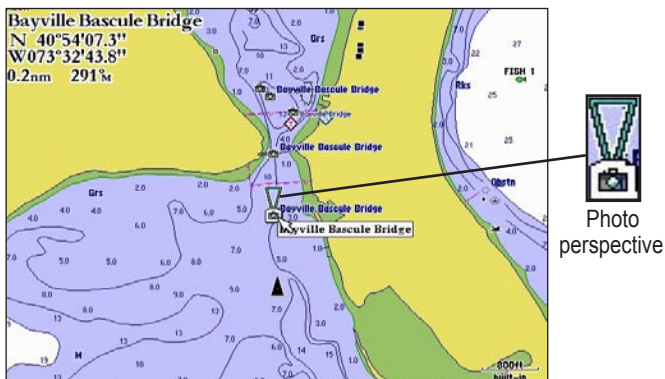
Review	
Light	Limit of Nature Reserve
Sub	
"6", Fl R 4s 12ft 3M	
Light Type: Flashing	
Period: 4.0s	
Red, 3m	
Height above Datum: 12.0ft	
Height above Foundation: 0.0ft	
GARMIN G-Map	
38.9nm	031°M
OK	

Viewing Photos

On Garmin BlueChart g2 preprogrammed data cards, navigationally significant aerial photographs are available for most ports and marinas. These photos can help you familiarize yourself with your surroundings. The camera icon () indicates a photo is available. There are usually two or three photos for each marina.

To view a photo:

Place the unit's map pointer on a camera icon () and press **ENTER**. An aerial photo of the selected area appears. The perspective or angle at which the picture was taken is shown when you highlight a camera icon.



Accessing Paper-Chart-Specific Information

BlueChart g2 cartography provides paper-chart-specific information, such as chart publisher, print date, edition date, NTM (Notice to Mariners), correction date, and scale. Additional notes are available for the paper charts.

To view paper-chart-specific information on your Garmin unit:

Place the unit's cursor on an open area of the chart, and press **ENTER**. A window shows the chart information and allows you to view additional notes about the chart area.

Review	
Depth Area	Chart 2us004R-4
New Haven Harbor Entrance and Port Jefferson to Throgs Neck.	
Scale 1:20000	
IALA Region B (Red to Starboard)	
Published in USA	
Print Date: AUG-2004	
Edition Date: AUG-2004	
Correction Date: 28-JUN-2005	
Soundings Displayed in Feet	
Soundings Stored in Feet	
Projection: Mercator	
Reference Ellipsoid: Unknown	
Chart 2us004R-4	
0.6nm	107°M
OK	

BlueChart g2 maps stay true to chart presentation and do not modify content. By providing paper chart-specific information, you can know exactly from which chart and scale each displayed feature is digitized. BlueChart g2 electronic charts are a faithful reproduction of the published official paper charts that mariners are required to carry.

BlueChart g2 data is not seamless. Just like the paper charts from which the data is derived, you might observe some discontinuity along chart borders on your Garmin unit. For example, if a contour is present on one chart, and not on the adjacent chart, the BlueChart g2 data is represented on your Garmin unit the same way.

Understanding the Differences Between Electronic and Paper Charts

Occasionally, boaters notice that the BlueChart g2 data does not duplicate a particular feature shown on the paper chart they are using. Garmin uses the best charts available and carefully turns the paper charts into a digital format for display on an electronic screen. If there are errors, omissions, or discrepancies on paper, they might occur electronically too.

On paper charts, sometimes even large features like a breakwater might not be shown clearly or at all. Large breakwaters are sometimes not shown on the harbor charts, but are shown on coastal charts—or vice versa. These decisions are made by the chart maker, such as NOAA/NOS. In some cases, bridges, or other features washed away in storms decades ago, are still shown on the paper charts. Recent changes in coastlines are often not reflected on paper charts for years.



The same is true for new marinas and ports. Sometimes, well-known local landmarks might be shown so small on the paper chart that they are indistinguishable from surrounding features to someone not familiar with the area. In these cases, a feature might not be accurately depicted on the electronic chart.

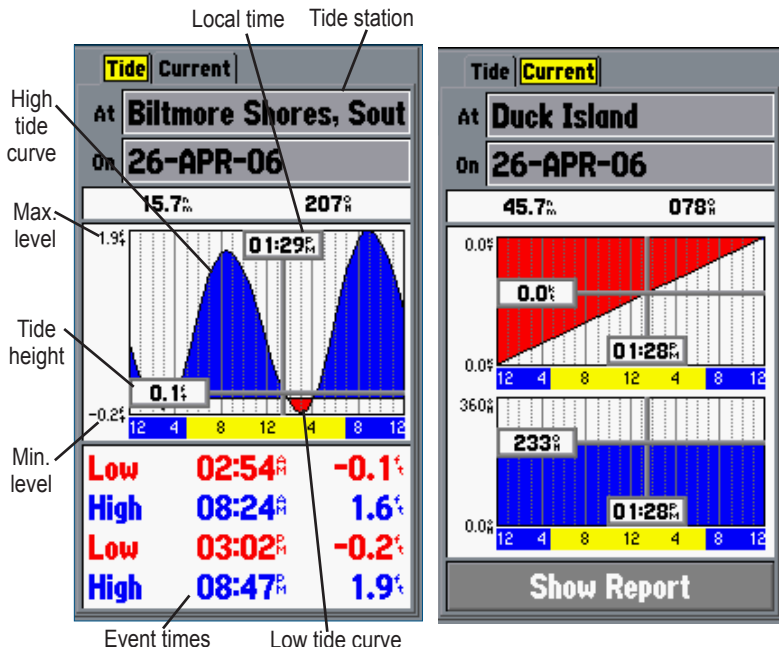
Reporting Chart Errors

Even when a feature is shown on the paper chart, it can be overlooked or misspelled during the data entry process. These are small problems that can be easily corrected and do not affect the quality of the overall BlueChart g2 data.

If you notice something missing or incorrect in the BlueChart g2 data, first check the best available scale paper charts of the area to see how the feature is represented on the paper chart. If we have not represented it accurately, or if you know additional information about the feature, visit Garmin's Web site and fill out the online error report form. You can find this form at www.garmin.com/cartography/.

Viewing Tide and Current Information

Using BlueChart g2 cartography, you can access tide information from more than 3,000 Tide Prediction Stations across the world. You can also access current information from Current Stations around the United States coastline, including Alaska and Hawaii (on preloaded Garmin units) as well as western Canada and several Caribbean islands (on preprogrammed data cards). Tide Prediction Stations are denoted with a  icon on the Map Page; Current Stations are indicated with a .



See your chartplotter's owner's manual for compatibility and instructions on viewing tide and current information on your Garmin unit.

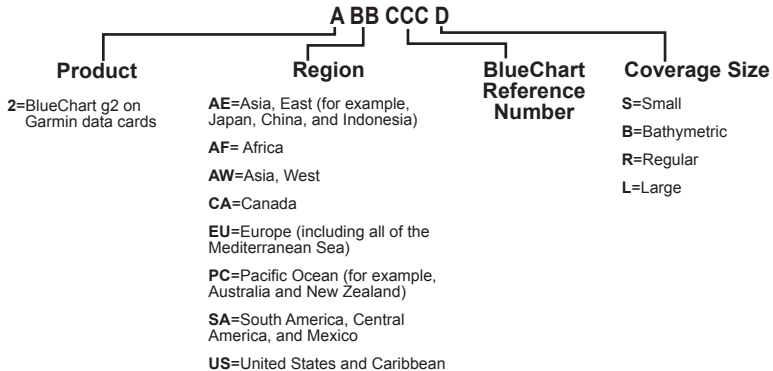
APPENDIX

Caring for Your BlueChart g2 Data Card

BlueChart g2 cards are not waterproof. When you are not using the card, keep it in the original packaging for safekeeping, and store it away from exposure to sun and rain. BlueChart g2 cards are susceptible to damage from static electricity. In low humidity environments, you should ground yourself on a large metal object before handling the card. The card packaging is sealed and does not contain any user-serviceable parts.

Reading the ID Code on a BlueChart g2 Card

Preprogrammed BlueChart g2 cards have a seven-digit ID code. This identification system uses the following conventions:



For the most recent listing of available BlueChart g2 data cards, visit the Garmin Web site at www.garmin.com. From the Maps & Charts section of the Garmin Web site, you can view the listing of available BlueCharts, the areas of coverage, and the paper charts contained within each card. A printed list is also available, which lists Garmin's current BlueChart g2 cards, part numbers, and the latest pricing.

Exclusive Garmin Programs

These programs apply to the US market only. These programs are not available through our European or Asian offices. All programs listed are available directly from Garmin US to end-users only.

Garmin believes that updates are an extremely critical issue for Marine Cartography, and we are committed to providing our customers with regular semi-annual updates. As updates occur, we will make every effort to ensure that the areas of coverage for a given card remains the same. Updates may include new data or NTM (Notice to Mariners) changes. Any changes can be viewed on details page for each card.

BUYER PROTECTION POLICY: (Applies ONLY to preprogrammed BlueChart g2 cards.) If a BlueChart g2 card is updated within 30 days of the original purchase date you may receive one free update. The identification number and coverage area must remain the same.

UPDATE/TRADE-IN PROGRAM: (Applies ONLY to preprogrammed BlueChart g2 cards.) Garmin will strive to offer semi-annual updates. If you own a factory preprogrammed BlueChart g2 card that is outdated, or would like to purchase a card for a different coverage area, Garmin offers an Update/Trade-In program. Simply send us your old factory preprogrammed BlueChart g2 card, and receive a 50% discount towards Garmin's list price on any factory preprogrammed BlueChart g2 card that includes sizes of S(mall), R(egular), L(arge), and B(athymetric). These sizes of cards can be interchangeable, for example, trade-in a Small BlueChart g2 card for a Bathymetric card, or vice versa. Only one update or trade-in per new BlueChart g2 card is allowed. BlueChart g2 pre-programmed cards CANNOT be traded in for any MapSource BlueChart Software. To return BlueChart g2 for update, contact Garmin Cartography at 800/800.1020 (or e-mail at: cartography@garmin.com) to obtain a Return Material Authorization (RMA) number. The return authorization number must appear on the outside of the shipping package, and the BlueChart g2 card must be shipped freight prepaid to Garmin at: 1200 East 151st Street, Olathe, KS 66062.

UPGRADING FROM BLUECHART TO BLUECHART g2: To encourage current Garmin customers to upgrade to our BlueChart g2 line, Garmin provides a 30% discount off the Garmin list price on new BlueChart g2 cards for end-users who send us a BlueChart data card, excluding our Extra Large and Jumbo BlueChart cards. This is a one-for-one discount available directly from Garmin only. To verify compatibility with BlueChart g2 data, you will be asked to present proof of a new chartplotter purchase.



NOTE: BlueChart g2 is not compatible with all Garmin models. Go to www.garmin.com for more information.

Purchasing BlueChart g2 Cards

You can purchase additional BlueChart g2 cards by contacting Garmin at one of the addresses or phone numbers listed on the [copyright page](#) of this guide, or by using the form on [page 15](#).

Warranty Information

Examine your preprogrammed BlueChart g2 card for damage immediately upon receipt. Garmin accepts returned cards within 10 days of the purchase date, if the card is found to be defective.

Product Registration

Help us better support you by completing our online registration today! By registering your purchase you are assured of notification of product updates or information about new products.

To register your BlueChart g2 preprogrammed data card:

1. Connect to our Web site at www.garmin.com/registration/.
2. Select **Data Card (Pre-Programmed)**, and click **Next**.
3. Select **BlueChart g2 Data Card** from the drop-down list, and click **Next**.
4. Complete the contact information, and then click **Next** to complete the registration.

Contact Garmin

Contact Garmin if you have any questions while using your BlueChart g2 preprogrammed data card. In the U.S.A. contact Garmin Product Support by phone: 913/397.8200 or 800/800.1020, Monday–Friday, 8 AM–5 PM Central Time; or go to www.garmin.com/support/, and click **Product Support**, or send an e-mail to cartography@garmin.com.

In Europe, contact Garmin (Europe) Ltd. at:44/0870.8501241 (outside the UK), or 0808 2380000 (UK only)
email: cartography.europe@garmin.com

INDEX

A

additional enhancements 1
 additional object information 6
 airport/seaplane base 4
 anchorage berth 4
 anchoring prohibited 4

B

beacon 4
 building 4
 buoy 4, 5

C

camera icon 7
 caring for 11
 chart errors 9
 church 4
 contact 13
 coverage 1
 currents 10
 current station 4, 10

D

dangerous rock 4
 data card viii, 2, 3, 4, 7, 11, 12,
 13, 15. *See* [Garmin data
 card](#)

E

explosive 4
 exposed rock 4, 5
 exposed wreck 4, 5

F

fishing harbor 4
 fishing prohibited 4

G

Garmin data card. *See* [data card](#)

I

ID code 11
 installing 3
 Introduction v

L

light 5

M

marina services 4, 5
 mariner's-eye view v

N

NOAA chart 5
 Notice to Mariners viii, 8

O

obstruction 5

P

paper chart 8, 9
 paper charts vi
 photos v, vi, 1, 4. *See*
also [viewing photos](#)
 photo perspective 7
 pilot boarding area 4
 precautionary area 4
 preloaded v, 1, 2
 preprogrammed 1, 2
 product registration 13
 purchasing BlueChart g2 data
 cards 12

R

radio report point 4
 real picture. *See* [photos](#)
 recommended anchorage 4
 registration. *See* [product
 registration](#)
 rescue station 4

S

stake 5
 symbols 4, 5

T

tides 10
 tide station 4, 5, 10

V

viewing photos 7

W

warranty 13
 wreck 5

Y

yacht harbor 4

BlueChart® g2 Data Card Order Form

If you want to trade-in or update BlueChart g2, contact Garmin Product Support at: 800/800.1020.

Shipping Address:

Name _____ Date _____

Street Address _____

City _____ State _____

ZIP/Postal Code _____ Country _____

Telephone _____ Fax _____

E-mail Address _____

Card Format Requested: Garmin Data Card []

BlueChart g2 Requested (for example, 2US006R - Chesapeake) _____

Model of Garmin Chartplotter or GPS Unit You Own _____

NOTE: BlueChart g2 cards do not work with all Garmin units. Refer to the product information for your Garmin unit at garmin.com for information about which Garmin units work with your card.

[] Express Shipping (additional charge applies)

Charge Agreement:

I authorize Garmin to charge my VISA/MasterCard/American Express/Discover for the appropriate amount.

Data cards should be examined immediately upon receipt. Returns must be made within 10 days of the invoice date for credit. No credits will be issued after this period.

Bill the above order to my credit card:

Type (circle one): VISA MasterCard American Express Discover

Account # _____ Exp. Date _____

Signature (as it appears on your card) _____

Mail or fax the completed form to Product Support at Garmin International (see address and phone numbers on the [copyright page](#) of this guide). You can also order online at <http://www.garmin.com> or by contacting us using e-mail at: cartography@garmin.com. Photocopies of this form are acceptable.

✂ (Cut Here)

For the latest free software updates (excluding map data) throughout the life of your Garmin products, visit the Garmin web site at www.garmin.com.



© Copyright 2006

Garmin Ltd. or its subsidiaries

Garmin International, Inc.

1200 East 151st Street, Olathe, Kansas 66062, USA

Garmin (Europe) Ltd.

Unit 5, The Quadrangle, Abbey Park Industrial Estate, Romsey, SO51 9DL, UK

Garmin Corporation

No. 68, Jangshu 2nd Road, Shijr, Taipei County, Taiwan

www.garmin.com

Part Number 190-00703-00 Rev. A

Free Manuals Download Website

<http://myh66.com>

<http://usermanuals.us>

<http://www.somanuals.com>

<http://www.4manuals.cc>

<http://www.manual-lib.com>

<http://www.404manual.com>

<http://www.luxmanual.com>

<http://aubethermostatmanual.com>

Golf course search by state

<http://golfingnear.com>

Email search by domain

<http://emailbydomain.com>

Auto manuals search

<http://auto.somanuals.com>

TV manuals search

<http://tv.somanuals.com>