

**EPSON**<sup>®</sup>  
EXCEED YOUR VISION

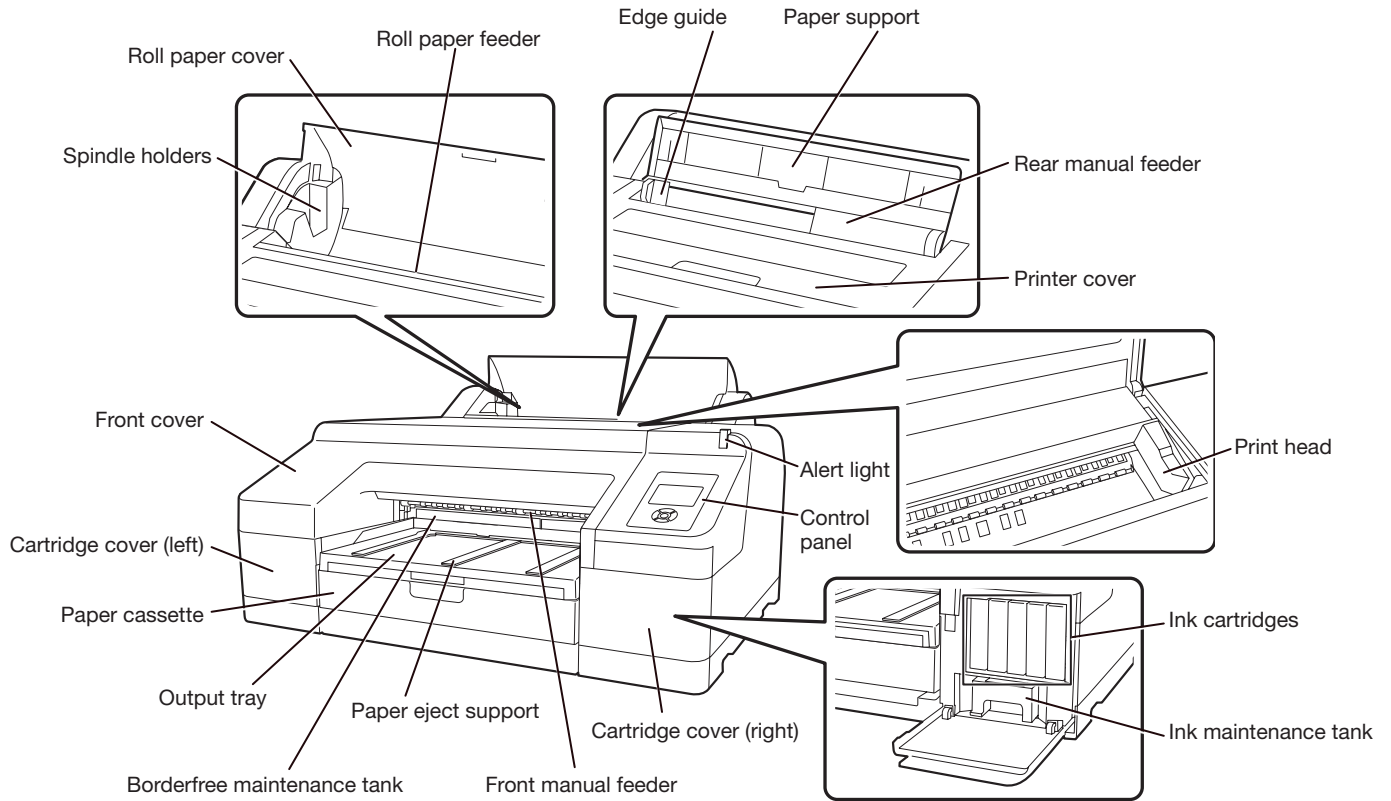


# Epson Stylus<sup>®</sup> Pro 4900

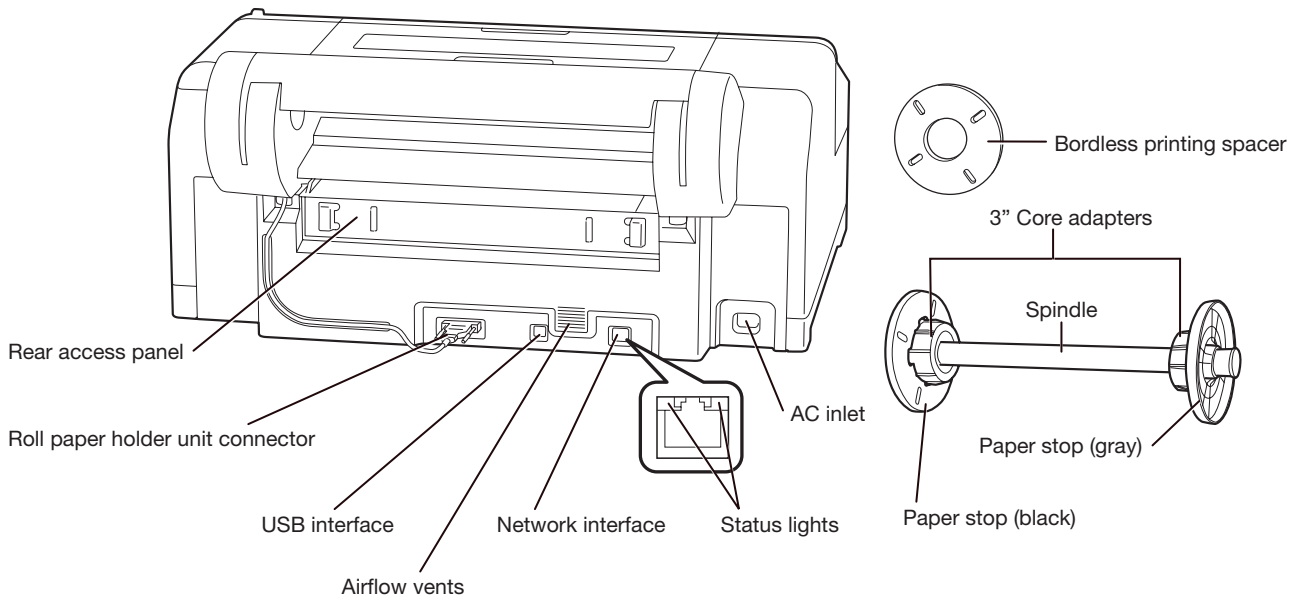
QUICK REFERENCE GUIDE

# Printer Parts

## Front

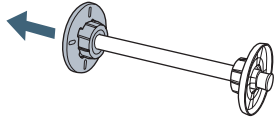


## Back



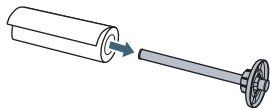
# Loading Roll Paper

- 1 Slide the black paper stop off the end of the spindle.

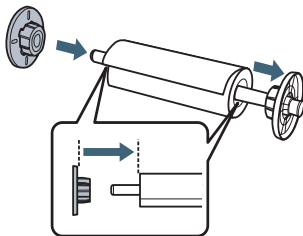


**Note:** To use paper with a 2-inch core, remove the gray adapters from the paper stops at each end. See your *User's Guide* for details.

- 2 Position the roll as shown, then slide it onto the spindle. The gray end should be on the right with the paper unwinding from the top.

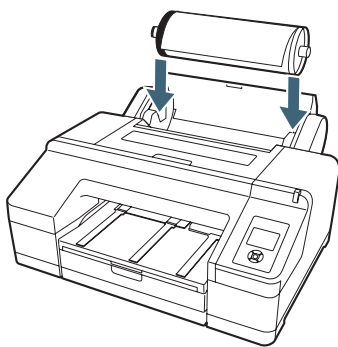


- 3 Slide the black paper stop back onto the spindle and insert it firmly into the end of the roll.



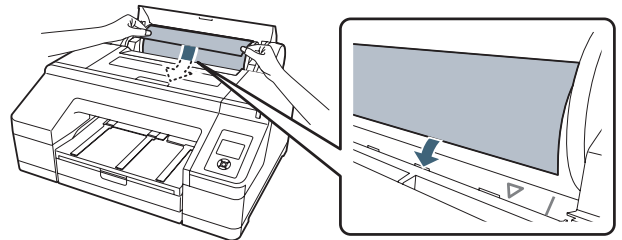
- 4 Open the roll paper cover.

- 5 Place the roll paper in the printer as shown. (The black end of the spindle goes on the left.)



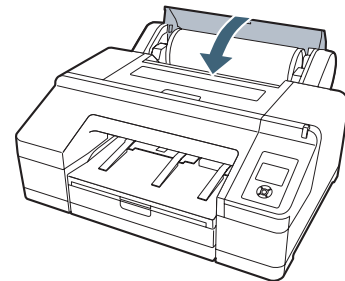
- 6 Make sure the printer is turned on, then press the  $\frac{\%}{\%}$  button on the control panel.

- 7 Insert the leading edge of the roll paper into the roll paper feeder until the message on the LCD screen changes to "Press the  $\frac{\%}{\%}$  button".

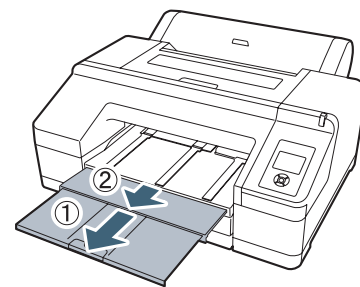


- 8 Press the  $\frac{\%}{\%}$  button. The printer automatically feeds the paper to the printing position.

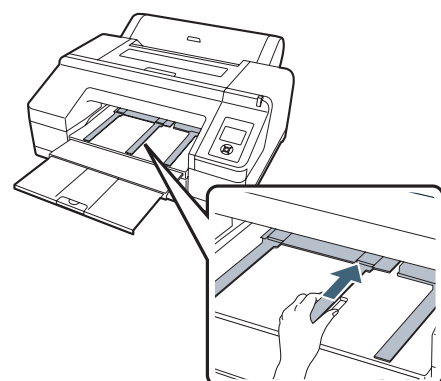
- 9 Close the roll paper cover.



- 10 Slide out the output tray. Do not raise the paper stopper. If the paper stopper is raised while printing, the paper may not eject correctly.

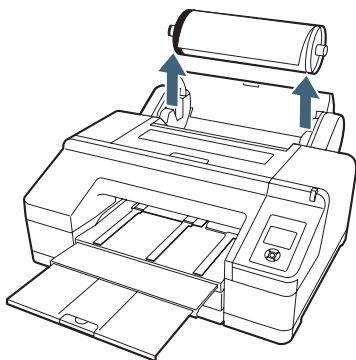


- 11 Set up the paper eject support for your paper type (see your *User's Guide* for details)

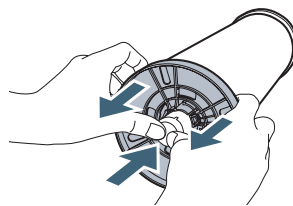


## Removing Roll Paper

- 1 Open the roll paper cover.
- 2 Press the  $\frac{1}{2}$  button. The paper rewinds automatically.  
**Note:** Make sure the roll paper is rewound before removing the spindle.
- 3 Hold both ends of the spindle and lift up from the spindle holder.



- 4 Remove the black paper stop from the spindle.

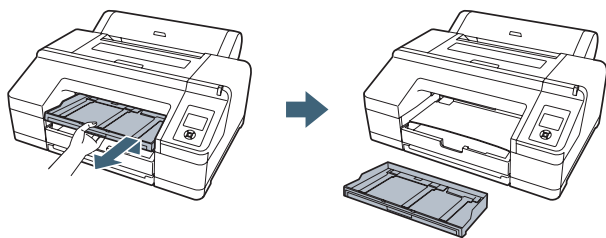


- 5 Remove the roll paper from the spindle.
- 6 Place the roll in its original package.

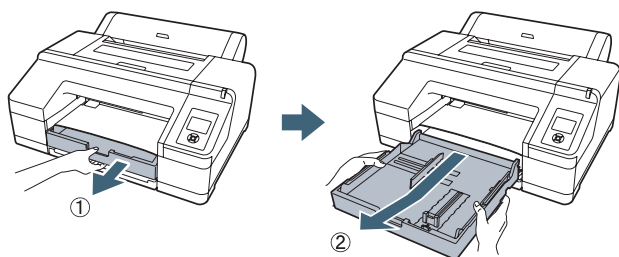
## Loading Paper in the Paper Cassette

Make sure the printer is on.

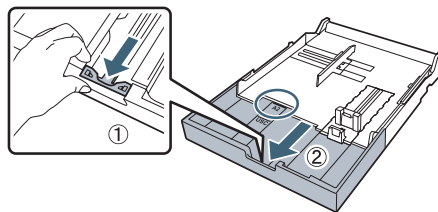
- 1 Lift the edge of the output tray to remove it.



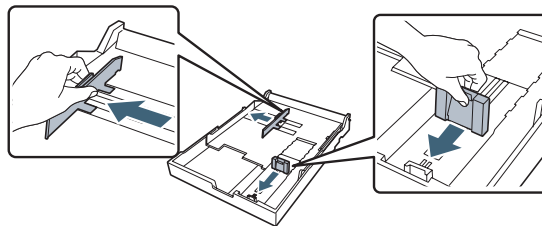
- 2 Slide open the paper cassette, lift it slightly and then pull it out.



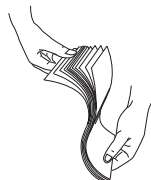
- 3 If your paper size is A3 or larger, extend the paper cassette to match the size of the paper.



- 4 Slide the edge guides outward.

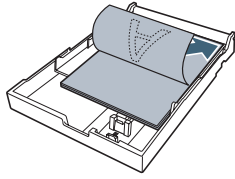


- 5 Thumb through a stack of paper, then gently tap it on a flat surface to even the pages.



## Loading Paper in the Tray (continued)

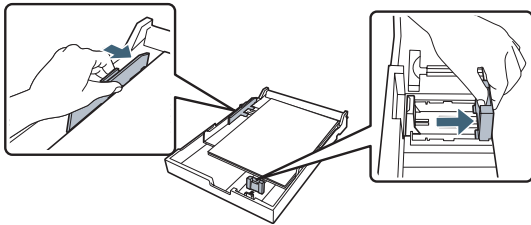
- 6** Load the sheets in the portrait orientation, short edge first, with the printable side face-down. Place the paper all the way back, against the right side of the tray.



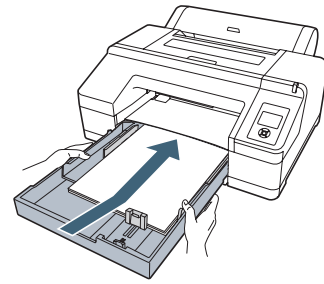
Don't load paper above the arrow mark inside the edge guide.

**Caution:** When you add more paper, always line up the edges with the paper already in the tray.

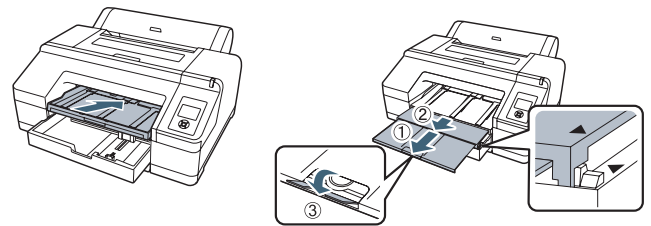
- 7** Slide the edge guides against the paper, but not too tightly.



- 8** Insert the paper cassette. Push it firmly into the printer.



- 9** Attach the output tray and extend it to fit your paper size.



- 10** Check the printer's control panel and press the ◀ paper source button to select the correct media type, if necessary.

## Configuring Auto Nozzle Check and Cleaning

### Automatically Checking and Cleaning the Print Head

Prior to a print job, the printer automatically checks the nozzles and cleans them if necessary. You can specify how often you want this to happen.

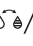



- 1** Press the ▶ Menu button. **PRINTER SETUP** is highlighted. Press ▶ again.
- 2** Press ▼ until **AUTO NOZZLE CHECK** is highlighted, then press ▶.
- 3** Select one of the following, then press OK:
  - **ON: PERIODICALLY**—The printer periodically checks its nozzles and runs a cleaning cycle if necessary (default setting).
  - **ON: EVERY JOB**—The printer automatically checks its nozzles and runs a cleaning cycle if necessary before each print job. This process uses a very small amount of ink (and no paper) and is useful if you are running large print jobs unattended.

- **OFF**—The printer will not perform automatic nozzle checks and cleaning cycles.

**Note:** You can also run nozzle checks and head cleaning cycles from your computer using Epson Printer Utility4 (Macintosh®) or the Utility tab in your printer driver (Windows®). See your *User's Guide* for more information.

# Configuring Auto Nozzle Check and Cleaning (continued)

## Manually Checking and Cleaning the Print Head


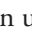
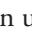

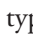



- 1 Make sure paper is loaded.
- 2 Press the  button to display the Ink Menu.
- 3 Press  until NOZZLE CHECK is selected, then press .
- 4 Press  to select AUTO NOZZLE CHECK, then press OK to start checking nozzles.


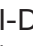
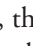
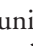


The LCD screen will report any color that has a clog and prompt if you want to clean it.

If no clog is detected, the message “Nozzle clog was not detected” will appear on the LCD screen.

## Aligning the Print Head

If your prints look grainy or blurry, or you see misregistration or “ghosting,” you need to align the print head.

- 1 Make sure the printer is turned on. Load Epson Enhanced Matte paper. (You can also use Epson Doubleweight Matte or Ultra Premium Photo Paper Luster.)
- 2 Press the  Menu button.
- 3 Press the  or  button until HEAD ALIGNMENT is highlighted. Then press .
- 4 Press  twice and choose the type of paper you loaded. Then press , choose a specific paper and press OK.
- 5 Press  3 times.
- 6 Press  to highlight ALIGNMENT.

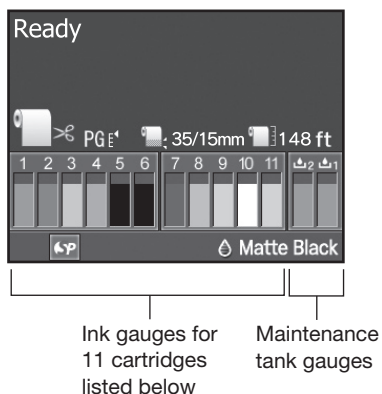
- 7 Press  to highlight AUTO, then press  again. UNI-D (uni-directional) is highlighted. This is the type of alignment to start with.
- 8 Press , then press OK to start the alignment process. Each head alignment takes about 7 minutes.  
**Caution:** Make sure you don't open the front cover or turn off the printer during the alignment process.
- 9 When the uni-directional alignment is finished, press the  Menu button, select HEAD ALIGNMENT, select ALIGNMENT, then select AUTO.
- 10 Select BI-D ALL, press , then press OK to start the bi-directional alignment.
- 11 When done, press the  button.

# Checking Ink Levels and Replacing Ink Cartridges

Before you begin a large print job, you should check your ink levels. If one of your cartridges is low, you can replace it before you start. Or you can wait until the ink runs out, replace the cartridge, and then continue the job.

## Checking Ink and Maintenance Tank Levels

The easiest way to check ink levels is from the control panel. The numbers above the ink cartridge icons correspond to the 11 cartridge slots in the printer.



## Replacing Ink Cartridges

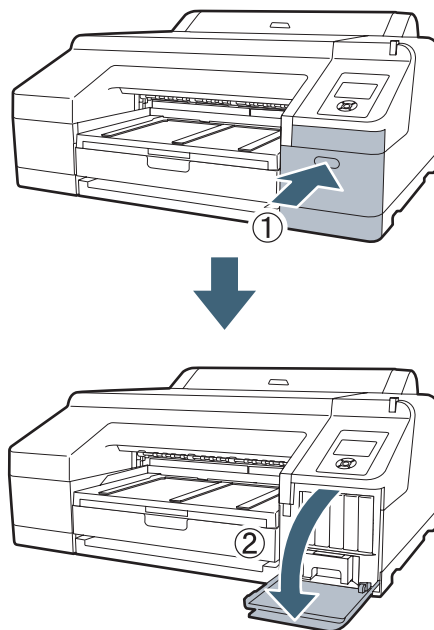
When one of the ink icons flashes, and **INK LOW** is displayed on the LCD screen, the cartridge is nearly expended. Check the LCD screen to see which cartridge is low, and make sure you have the correct replacement cartridge.

*Epson UltraChrome® HDR ink cartridges*

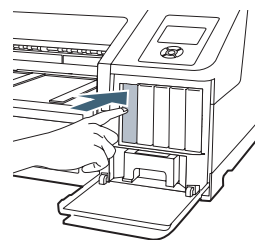
Ink Bay	Slot no.	Cartridge	Part no.
Left	1	Green (GR)	T653B00
	2	Light Light Black (LLK)	T653900
	3	Yellow (Y)	T653400
	4	Light Cyan (LC)	T653500
	5	Vivid Light Magenta (VLM)	T653600
	6	Orange (OR)	T653A00
Right	7	Matte Black (MK)	T653800
	8	Vivid Magenta (VM)	T653300
	9	Light Black (LK)	T653700
	10	Cyan (C)	T653200
	11	Photo Black (PK)	T653100

When one of the icons has an X and **REPLACE INK CARTRIDGE** is displayed, the cartridge is expended. To replace the cartridge, first make sure the printer is on.

- 1 Press the ink compartment cover to open it.

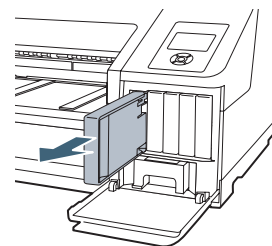


- 2 Push in the low or expended cartridge to release it.



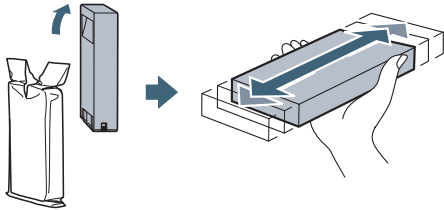
- 3 Remove the expended ink cartridge from the printer.

**Warning:** Do not shake the expended cartridge, or ink may leak. If ink gets on your hands, wash them thoroughly with soap and water. If ink gets in your eyes, flush them immediately with water.

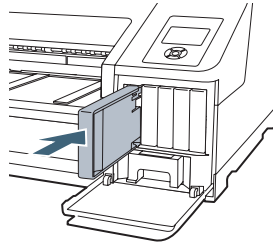



## Checking Ink Levels and Replacing Ink Cartridges (continued)

- 4 Make sure the replacement cartridge is the correct color and remove it from its package. Gently shake the cartridge before installing it.

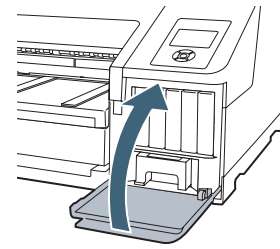


- 5 Hold the cartridge with the arrow mark pointing toward the printer. Then insert the cartridge into the slot. Don't force it.



**Note:** If you can't insert the cartridge smoothly, you may have the wrong cartridge or are trying to insert it into the wrong slot. Check the package and part number. If the  Ink light remains on after installing the cartridge, try removing and then reinserting it.

- 6 Close the ink cover.

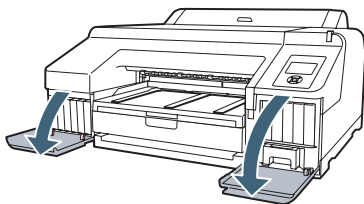


## Replacing Printer Parts

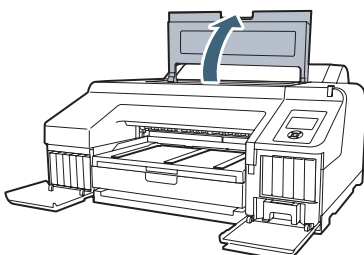
### Replacing the Paper Cutter

If you notice that the paper isn't cut cleanly, you may need to replace the cutter (part # C1C815351).

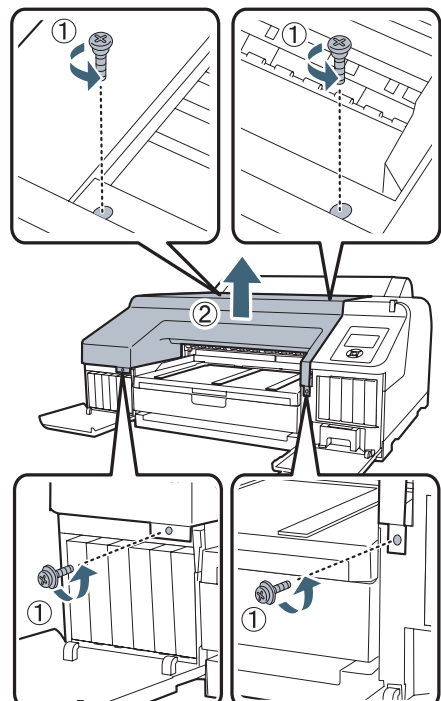
- 1 Turn off the printer.
- 2 Open the ink cartridge covers.



- 3 Open the printer cover.



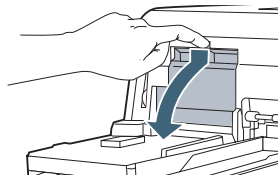
- 4 Use a cross-head screwdriver to remove the four screws holding the front cover in place, then remove the front cover.





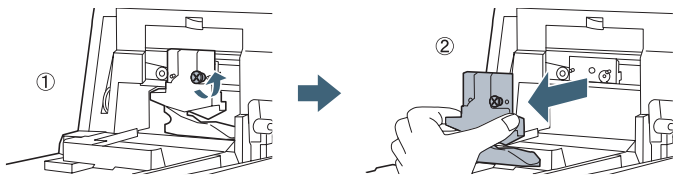
# Replacing Printer Parts (continued)

- 5 Open the cutter cover.

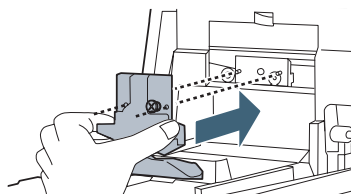


- 6 Loosen the screw holding the cutter in place, then carefully remove the cutter.

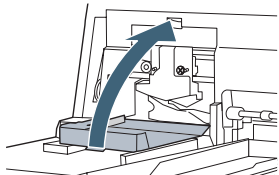
**Warning:** The blade is sharp. Be careful when removing it.



- 7 Insert the new cutter. Make sure the cutter pin goes into the hole. Tighten the screw using a cross-head screwdriver.



- 8 Align the cutter cover, then press it in until it snaps into place.



- 9 Replace the front cover.

**Note:** If you are using the optional SpectroProofer, install it without replacing the front cover.

- 10 Close the printer cover and ink cartridge covers.

## Replacing the Maintenance Tanks

The Epson Stylus Pro 4900 has two maintenance tanks: Ink (part# T619000) and Borderfree (part# T619100). You need to replace each maintenance tank when the LCD screen instructs you to do so.

- 1 Check the LCD screen to determine which tank needs to be replaced (Ink or Borderfree).

**Note:** The printer will not print if one of the maintenance tanks is full.

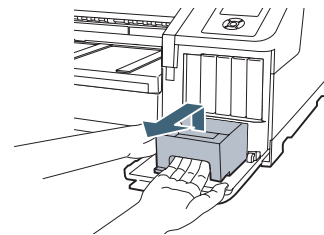
- 2 Turn off the printer.

## Replacing the Ink Maintenance Tank

- 1 Open the right ink cartridge cover.

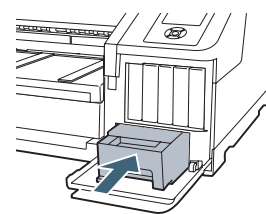
- 2 Pull out the maintenance tank as shown.

**Caution:** Do not tilt the tank or ink may spill out



- 3 Place the used tank in the plastic bag included with the new tank and dispose of it carefully.

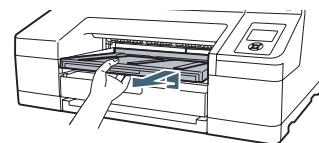
- 4 Insert the new tank, then close the cartridge cover.



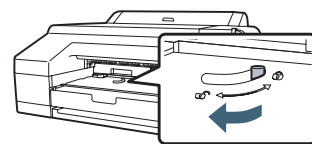
## Replacing the Borderfree Maintenance Tank

- 1 Remove the output tray.

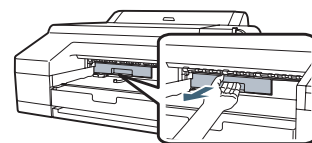
**Note:** If optional SpectroProofer is installed, remove it.



- 2 Release the tank lock.



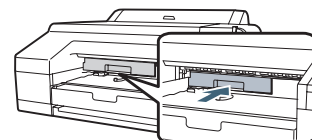
- 3 Pull out the maintenance tank as shown.



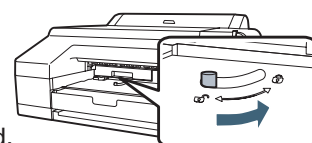
**Caution:** Do not tilt the tank or ink may spill out.

- 4 Place the used tank in the plastic bag included with the new tank and dispose of it carefully.

- 5 Insert the new tank. Push it in firmly.



- 6 Set the lock, then replace the output tray.



**Note:** The printer will not print if the tank is unlocked.

# Control Panel Menus

Boldface type indicates the default setting. Press the ► **Menu** button to access the menus. See the *User's Guide* for details.

Menu	Item	Settings / Explanation
PRINTER SETUP	PLATEN GAP	<b>STANDARD</b> , NARROW, WIDE, WIDER, WIDEST
	PAGE LINE	<b>ON</b> , OFF
	ROLL PAPER MARGIN	<b>DEFAULT</b> , 3mm, 15m, TOP/BOTTOM 15mm, TOP 35/BOTTOM 15mm
	PAPER SIZE CHECK	<b>ON</b> , OFF
	PAPER SKEW CHECK	<b>ON</b> , OFF
	REFRESH MARGIN	<b>ON</b> , OFF
	AUTO NOZZLE CHECK	<b>ON: PERIODICALLY</b> , ON: EVERY JOB, OFF
	PRINT NOZZLE PATTERN	<b>OFF</b> , ON: EVERY PAGE, ON: EVERY 10 PAGES
	CHANGE BLACK INK	<b>MANUAL</b> , AUTO
	AUTO ROLL FEEDING	<b>ON</b> , OFF
	INITIALIZE SETTINGS	Restores default settings

TEST PRINT	STATUS SHEET	Printer settings, total prints, and maintenance tank capacity remaining
	NETWORK STATUS SHEET	Network settings
	JOB INFORMATION	Date and Time and Ink and paper used for the last 10 jobs; most recent job is number 0
	CUSTOM PAPER	Information about registered paper configurations

MAINTENANCE	CUTTER ADJUSTMENT	Adjusts cutter position
	CLOCK SETTING	MM/DD/YY HH:MM

PRINTER STATUS	VERSION	Current firmware version
	INK LEVEL	Percentage of ink remaining in each cartridge
	MAINTENANCE BOX	Percentage of capacity remaining in each maintenance tank
	JOB HISTORY	Ink in milliliters and paper in square centimeters for each saved job; most recent job is number 0
	TOTAL PRINTS	Number of pages printed

## Control Panel Menus (continued)

PAPER SETUP	ROLL PAPER REMAINING	Setting appears only when no paper is loaded	
	REMAINING PPR SETUP	<b>OFF</b> , ON	
	ROLL PAPER LENGTH	From 15 to 300 ft	
	ROLL LENGTH ALERT	From 4 to 50 ft	
	PAPER TYPE	Media type loaded in the printer	
	CUSTOM PAPER	Paper No 1 to 10	
	PAPER TYPE	Photo, Proofing, Fine Art, Matte, Plain, Others	
	PLATEN GAP	<b>STANDARD</b> , NARROW, WIDE, WIDER	
	THICKNESS PATTERN	PRINT	
	PAPER FEED ADJUST A	-0.70% to 0.70%	
	PAPER FEED ADJUST B	-0.70% to 0.70%	
	DRYING TIME	0.0 sec. to 10.0 sec.	
	PAPER SUCTION	<b>STANDARD</b> , -1, -2, -3, -4	
	SET ROLL PAPER TENSION	<b>NORMAL</b> , HIGH, EXTRA HIGH	
	REMOVE SKEW	<b>ON</b> , OFF	
	HEAD ALIGNMENT	PAPER THICKNESS	
		PAPER TYPE	Media type loaded in the printer.
PAPER THICKNESS		<b>8 mil (0.2 mm)</b> , 4 mil to 60 mil (0.1 to 1.5 mm)	
ALIGNMENT			
AUTO		UNI-D, BI-D 2-COLOR, BI-D ALL, BI-D #1, BI-D #2, BI-D #3, BI-D #4	
MANUAL	UNI-D, BJ-D 2-COLOR, BI-D ALL		

NETWORK SETUP	NETWORK SETTINGS	<b>HIDE</b> , SHOW
	IP ADDRESS SETTING	<b>AUTO</b> , PANEL
	IP, SM, DG SETTING	IP address, subnet mask, default gateway
	BONJOUR	<b>ON</b> , OFF
	WSD	<b>OFF</b> , ON
	INIT NETWORK SETTING	Resets all network settings

# Where To Get Help

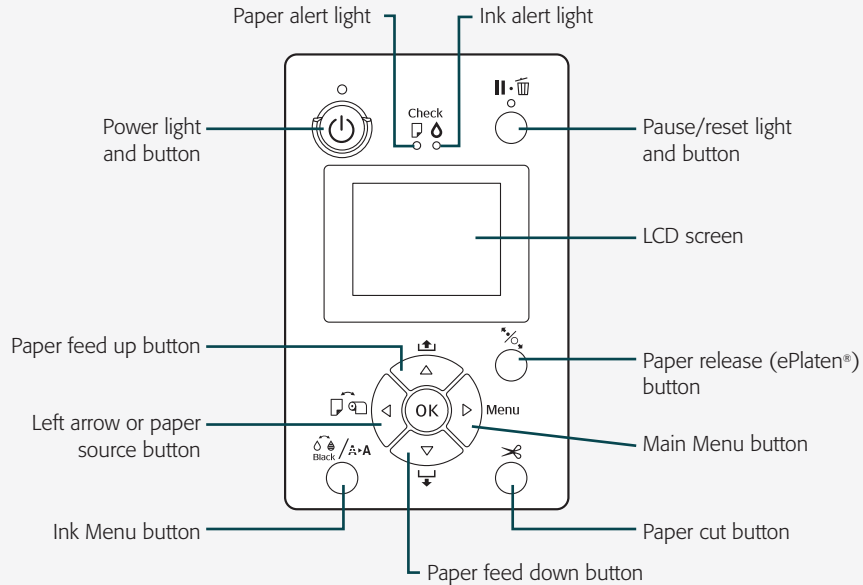
Epson Preferred<sup>SM</sup> Unit ID number

Date of purchase

Serial number

Service	Access
Telephone support	Call (888) 377-6611. Make sure you have your Unit ID number.  If you experience any difficulty with the toll-free number or your Unit ID number, call (562) 276-1305.
Internet	Go to <a href="http://epson.com/support">epson.com/support</a> to download drivers and firmware, access product documentation and troubleshooting, and get technical advice through e-mail.
Support for non-Epson RIP	Contact the RIP manufacturer.

# Control Panel Lights and Buttons



## Free Manuals Download Website

<http://myh66.com>

<http://usermanuals.us>

<http://www.somanuals.com>

<http://www.4manuals.cc>

<http://www.manual-lib.com>

<http://www.404manual.com>

<http://www.luxmanual.com>

<http://aubethermostatmanual.com>

Golf course search by state

<http://golfingnear.com>

Email search by domain

<http://emailbydomain.com>

Auto manuals search

<http://auto.somanuals.com>

TV manuals search

<http://tv.somanuals.com>