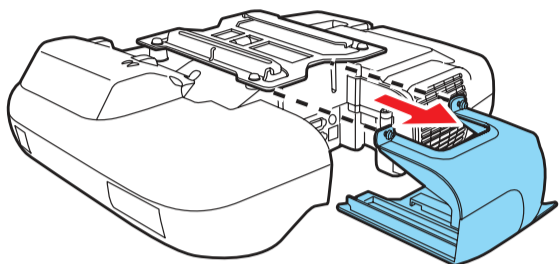


Quick Setup

Before using the projector, make sure you read the safety instructions in the *User's Guide* on your projector CD.

Connect the projector

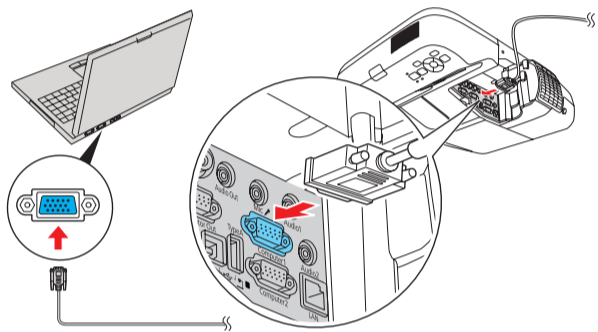
Before you can connect to the projector, you need to loosen the screws and remove the cable cover.




Choose from the following connections:

Computer Monitor Port

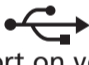
Connect a computer using the VGA cable that came with the projector.

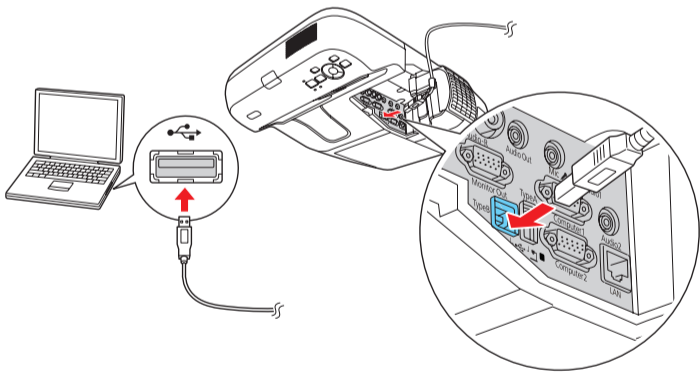


Connect one end to the projector's **Computer1** or **Computer2** port, and the other end to your computer's  monitor port. If you are using a laptop, switch it to external display. You can also connect an audio cable or microphone.

Computer USB Port

Connect a computer using a USB cable.

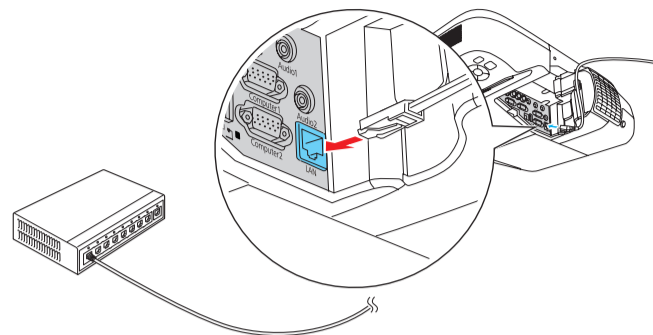
Connect the square end of the USB cable to the projector's **TypeB**  (square) USB port. Connect the flat end of the cable to any USB port on your computer. You can also connect an audio cable or microphone.



Follow the on-screen instructions to install the Epson USB Display software. If you see warning messages, click **OK** or **Continue**. (Software is installed only the first time you connect the computer.) Press the **USB** button on the remote control if necessary.

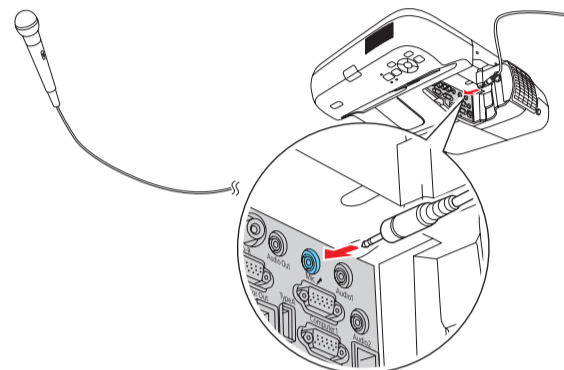
Network (LAN)

Connect the projector to your network using an Ethernet® cable. See "Project over the network" for more information.



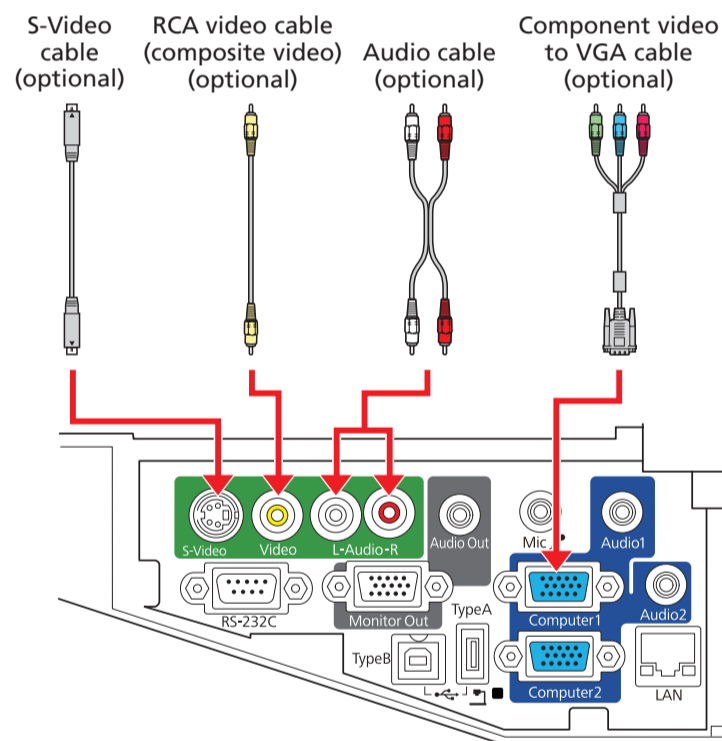
Microphone

Connect a dynamic or condenser microphone to the **Mic** port, using a 3.5 mm mini-jack cable.




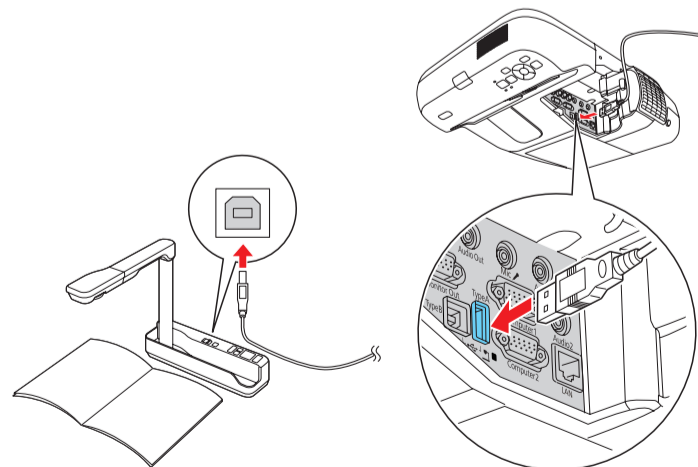
Video Player

Connect up to 4 video devices and use the remote control to switch between them.



Interactive Whiteboard or Document Camera

Connect an interactive whiteboard or document camera to the projector's **TypeA**  (flat) USB port.

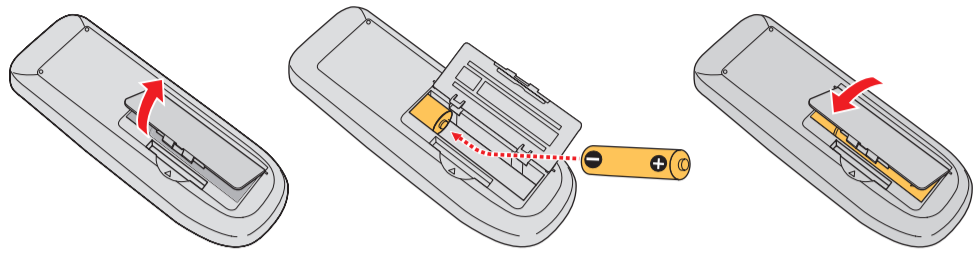


For information on playing sound through the projector or connecting an external monitor, see the *User's Guide* on your projector CD.



Using the remote control

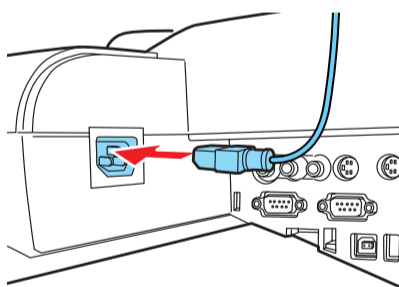
Make sure the batteries are installed as shown (two AA batteries).



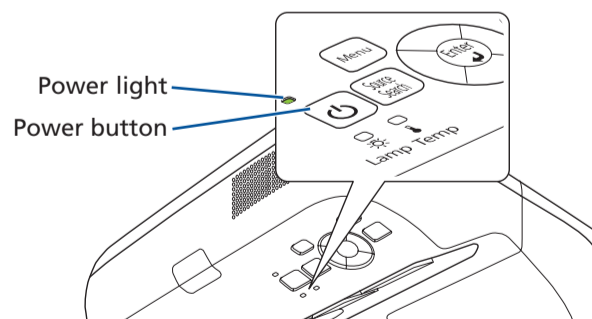
You can use the remote control to operate the projector. With the USB cable, you can use the remote as a wireless mouse. For more information on using the remote control, see your *User's Guide*.

Turn on your equipment

- 1 Turn on your computer or video source.
- 2 Make sure the power cord is connected and plugged into an electrical outlet.



- 3 Press the power button on the projector or remote control.



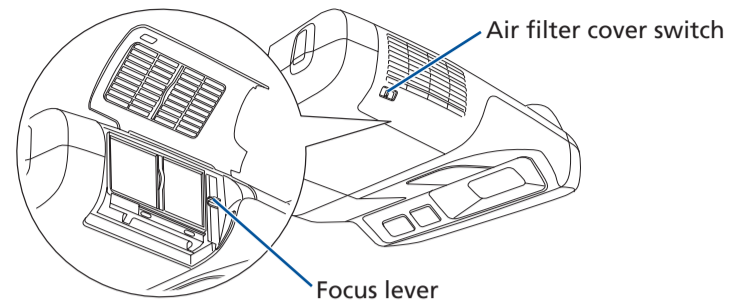
The power light flashes green, then stays on.

NOTE: To shut down the projector, press the power button twice.

- 4 If you don't see an image, press the **Source Search** button on the remote control to select the image source.

NOTE: If you still see a blank screen or have other display problems, see the troubleshooting tips on the back of this sheet.

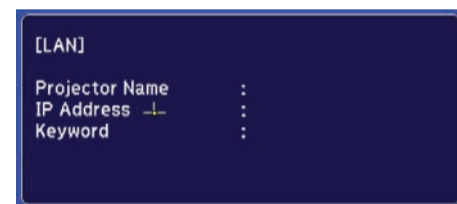
- 5 If you need to focus the image, first slide the switch to open the air filter cover on the side of the projector. Then raise or lower the focus lever to sharpen the image.



Project over the network

Install EasyMP® Network Projection on each computer that will project over the network. Use the CD labeled **Epson Projector Software for Meeting & Monitoring** to install EasyMP Network Projection. If you need to configure the projector for your network, see "Network Configuration" on the back of this sheet.

- 1 Press the **LAN** button on the remote control.

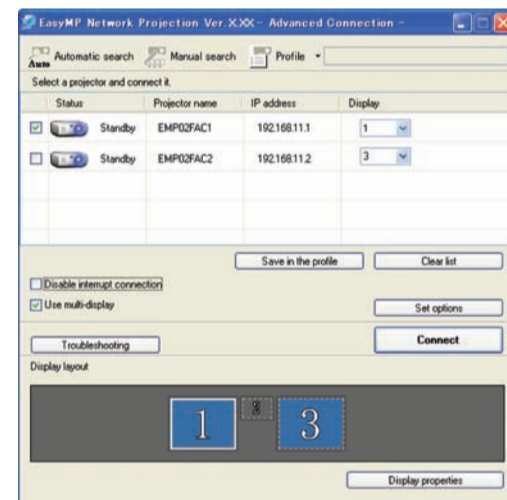


- 2 Start EasyMP Network Projection on your computer.

Windows®: Select or **Start > Programs** or **All Programs > EPSON Projector > EasyMP Network Projection**.

Mac OS® X: Double-click the **EasyMP Network Projection** icon in your Applications folder.

- 3 Select **Advanced Connection Mode** and click **OK**.



- 4 Select the projector you want to connect to, then click **Connect**.

If you don't see the projector you want, click the **Automatic search** button.

- 5 If you see a message asking for a keyword, enter the four digits that appear on the LAN standby screen and click **OK**.

Your computer image is projected, with a floating toolbar:



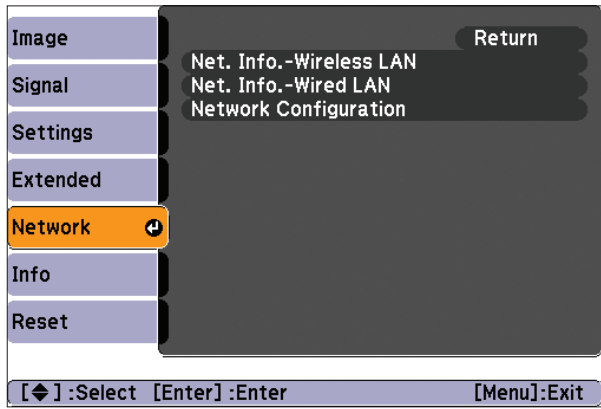
When you're done presenting, click **Disconnect** on the toolbar.

NOTE: Using the optional Wireless LAN module, you can project wirelessly. To purchase the Wireless LAN module or other accessories, see "Optional Accessories" on the back of this sheet. For more information about using the projector on a network, see the *User's Guide and EasyMP Network Projection Operation Guide on your projector CD*.

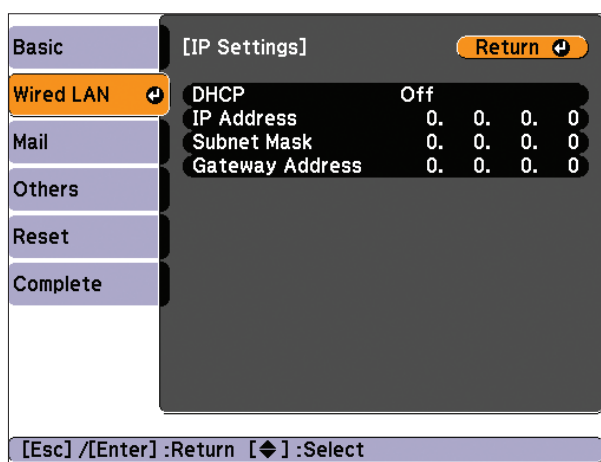
Network configuration

If you need to configure the projector for your network, you can use the projector's menu system.

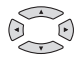
- 1 Press the **Menu** button on the remote control, select the **Network** menu, then press **Enter**.



- 2 Choose **Network Configuration** and press **Enter**.
- 3 Select the **Wired LAN** menu and press **Enter**.
- 4 Choose **IP Settings** and press **Enter**. You see a screen like the following:



- 5 Do one of the following:
 - If your network assigns addresses automatically, turn on the **DHCP** setting.
 - If your network does not assign addresses automatically, turn off DHCP and enter the projector's **IP Address**, **Subnet Mask**, and **Gateway Address**, as needed.

To enter numbers, use the  buttons on the remote control to highlight the number you want to input, then press the **Enter** button. When you're finished entering an address in the network menu, highlight **Finish**, then press the **Enter** button. Press the **Esc** button to return to the previous menu.

- 6 When you're done making all necessary changes, press the **Esc** button, select **Complete** and press the **Enter** button to save your settings. Then press **Enter** again to confirm.
- 7 Press the **Menu** button to exit the menu system.

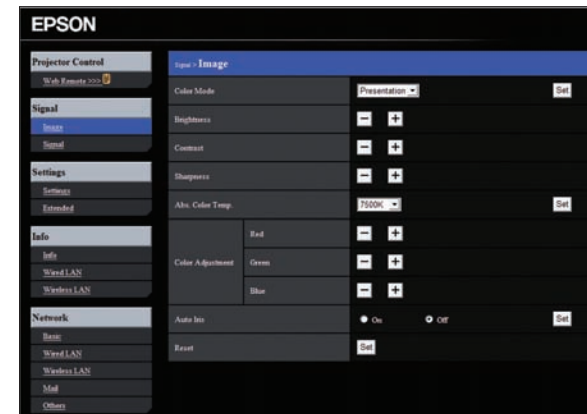
Using web remote

You can use a standard web browser to control the projector through the network. A "virtual remote control" on your computer screen lets you perform many of the same functions as you can with the physical remote control.

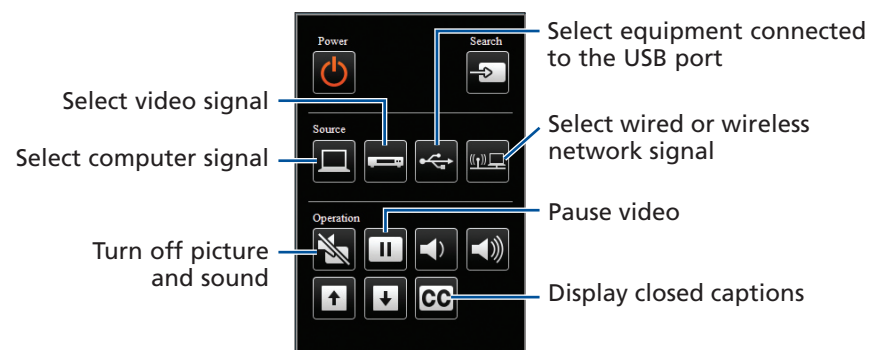
- 1 Open your web browser and enter the IP address of the projector you want to monitor in the browser window.

If you're not sure what the address of the projector is, turn the projector on and select **Net. Info.-Wired LAN** or **Net. Info.-Wireless LAN** from the Network menu to display the IP address of the projector. (Do not enter the leading zeroes.)

- 2 Press **Enter**, or, if you set a web control password in the projector's Network menu, enter your user name and password, then press **Enter**.




- 3 From the Projector Control menu, select **Web Remote**. Use the on-screen buttons to operate the projector, as you would using the remote control.



Troubleshooting


If you see a blank screen...

If you see a blank screen or the **No signal** message after turning on your computer, check the following:

- Make sure the power light on the projector is green and not flashing.
- Press the **Source Search** button or one of the source buttons on the remote control to select the image source.
- If you're using a Windows laptop, press the function key on your keyboard that lets you display on an external monitor. It may be labelled **CRT/LCD** or have an icon such as . You may have to hold down the **Fn** key while pressing it.

If the projector and laptop don't display the same image...

Windows

Try using the CRT/LCD or  key as described above. On most systems, this key lets you toggle between the LCD screen and the projector, or display on both at the same time.

Depending on your computer's video card, you might need to use the Display utility in the Control Panel to make sure both the LCD screen and the external monitor port are enabled. See your computer's Help for details.

Mac OS X

- 1 From the Apple® menu, select **System Preferences**, then select **Display** or **Displays**.
- 2 Click **Detect Displays**.
- 3 Make sure the **VGA Display** or **Color LCD** dialog box is selected.
- 4 Click **Arrangement** or **Arrange**, then make sure **Mirror Displays** is selected.

Where to get help

Manuals

For more information about using the projector, install the manuals from your projector CD.

Telephone Support Services

To use the Epson PrivateLine® Support service, call (800) 637-7661 and enter the PIN on the Epson PrivateLine Support card included with your projector. This service is available 6 AM to 6 PM, Pacific Time, Monday through Friday, for the duration of your warranty period. You may also speak with a projector support specialist by dialing one of these numbers:

U.S.: (562) 276-4394, 6 AM to 6 PM, Pacific Time,
Monday through Friday

Canada: (905) 709-3839, 6 AM to 6 PM, Pacific Time,
Monday through Friday

Days and hours of support are subject to change without notice. Toll or long distance charges may apply.

Internet Support

Visit epson.com/support for solutions to common problems. You can download utilities and documentation, get FAQs and troubleshooting advice, or e-mail Epson.

Registration

Register today to get product updates, special promotions, and customer-only offers. You can use the CD included with your projector, or register online at www.epson.com/webreg.

Optional accessories

You can purchase screens or other accessories from an Epson authorized reseller. To find the nearest reseller, call 800-GO-EPSON (800-463-7766). Or you can purchase online at www.epsonstore.com (U.S. sales) or www.epson.ca (Canadian sales).

Product	Part number
Replacement lamp	V13H010L57
Air filter replacement set (2 filters)	V13H134A27
DC-10s document camera	ELPDC10S
DC-06 document camera	V12H321001
Wireless LAN module	V12H306P11
Quick Wireless Connection USB key	V12H005M05

EPSON
EXCEED YOUR VISION



Epson and EasyMP are registered trademarks and Epson Exceed Your Vision is a registered logomark of Seiko Epson Corporation. PowerLite and PrivateLine are registered trademarks of Epson America, Inc.

General Notice: Other product names used herein are for identification purposes only and may be trademarks of their respective owners. Epson disclaims any and all rights in those marks.

This information is subject to change without notice.

© 2009 Epson America, Inc. 11/09
Printed in XXXXXX

CPD-27772

Free Manuals Download Website

<http://myh66.com>

<http://usermanuals.us>

<http://www.somanuals.com>

<http://www.4manuals.cc>

<http://www.manual-lib.com>

<http://www.404manual.com>

<http://www.luxmanual.com>

<http://aubethermostatmanual.com>

Golf course search by state

<http://golfingnear.com>

Email search by domain

<http://emailbydomain.com>

Auto manuals search

<http://auto.somanuals.com>

TV manuals search

<http://tv.somanuals.com>