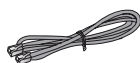
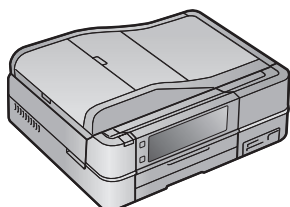


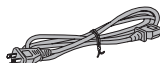
Artisan® 835 Series Start Here

Read these instructions before using your product.

1 Unpack



Phone cord



Power cord

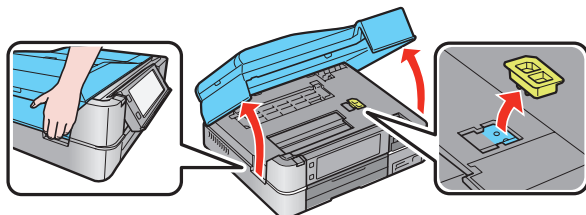


French control panel stickers (Included for Canada only)

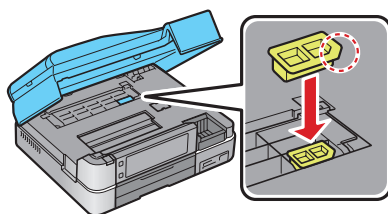
Caution: Do not open ink cartridge packages until you are ready to install the ink. Cartridges are vacuum packed to maintain reliability.

Remove all protective materials from the printer, including from inside the paper cassette.

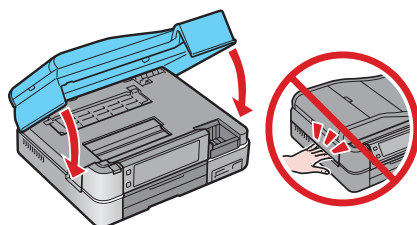
- 1 Raise the scanner and remove the transportation lock.



- 2 Store the transportation lock as shown.

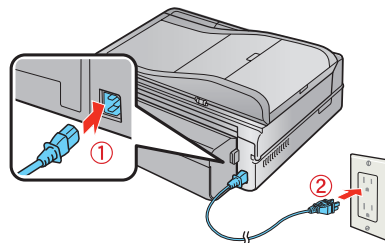


- 3 Lower the scanner.



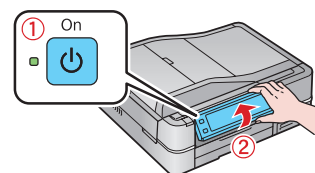
2 Turn on and adjust

- 1 Connect the power cable.



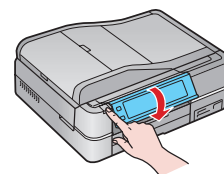
Caution: Do not connect to your computer yet.

- 2 Press the **On** button, then raise the control panel.



To lower the control panel, press the **Unlock** button.

Caution: To avoid damaging your printer, always press and hold the **Unlock** button to lower the control panel.



3 Select settings

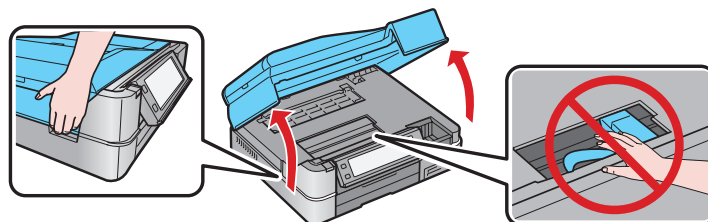
- 1 Select your language and country.
Touch the screen to select the desired option. Press ◀ or ▶ to see more countries.
- 2 Select the current **Daylight Saving Time** setting (**Winter** or **Summer**) and press **OK**.
- 3 Select the date format.
- 4 Use the numeric keypad to set the date, then press **OK**.
- 5 Select the time format (**12h** or **24h**).
- 6 Use the numeric keypad to set the time.
- 7 Press **OK** when done.

Note: You can change the date and time settings by pressing the **Home** button, selecting **Setup**, selecting **Printer Setup**, then **Date/Time**. For more information on using and adjusting the control panel, see your *Quick Guide*.

4 Install ink cartridges

Note: Do not load paper yet.

- 1 Lift up the scanner.



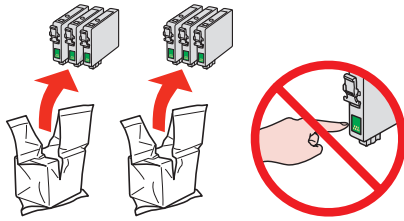
411893400

EPSON®

EXCEED YOUR VISION

Download from www.Somanuals.com. All Manuals Search And Download.

2 Unpack the ink cartridges.

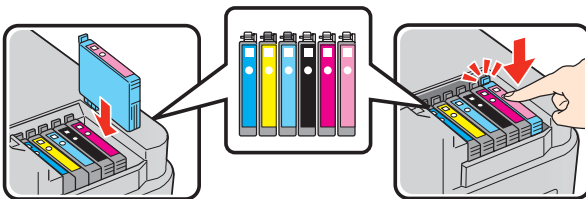


3 Remove only the yellow tape from each cartridge.

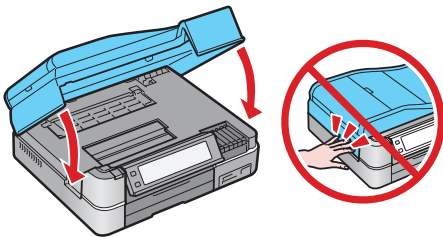


Caution: Don't remove any other seals or the cartridges may leak.

4 Insert the cartridges in the holder for each color. Press each cartridge down until it clicks.



5 Lower the scanner.



6 Wait while the printer is priming, which takes about 5 minutes.

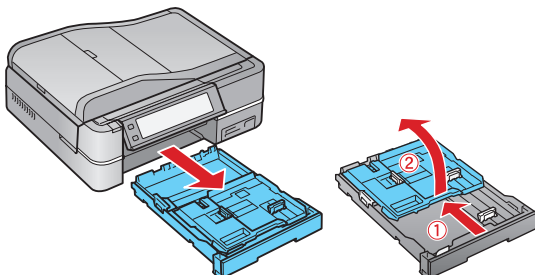
Note: Your printer ships with full cartridges and part of the ink from the first cartridges is used for priming the printer. Replacement cartridges will print more pages.

Caution: Don't turn off the printer while it is priming or you'll waste ink.

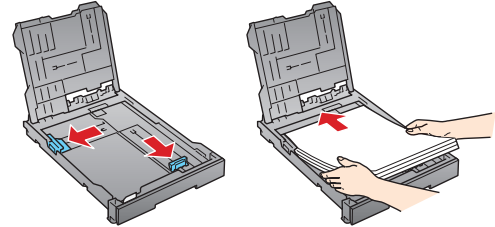
5 Load paper

The paper cassette has 2 trays. The main tray is for A4, letter-size, legal-size, or 8 x 10-inch paper. The photo tray is for 4 x 6- or 5 x 7-inch photo paper. For instructions on loading legal-size paper, see the online *User's Guide*.

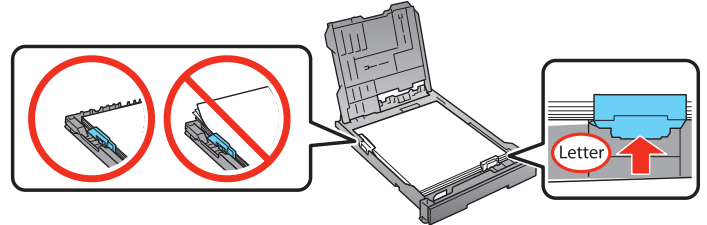
1 Pull out the paper cassette. Then slide back the photo tray and lift it up.



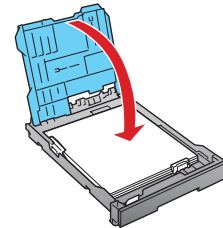
2 Squeeze the edge guides and slide them out. Then insert paper with the glossy or printable side face-down.



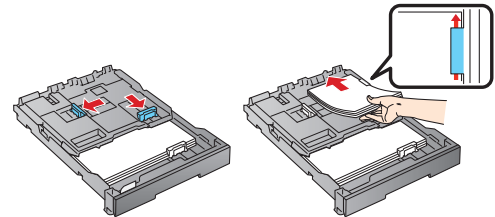
3 Slide the edge guides against the paper.



4 Lower the photo tray.

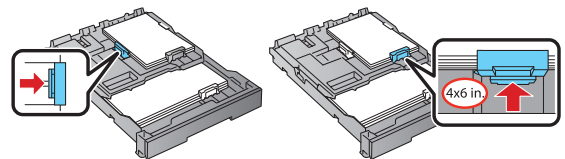


5 Squeeze the edge guides and slide them out. Then insert 4 x 6-inch or 5 x 7-inch photo paper with the glossy or printable side face-down.

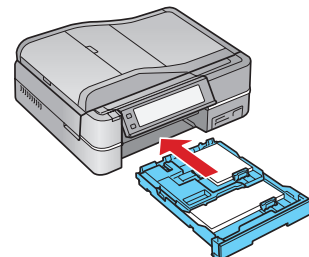


Note: Make sure the paper fits under the edge guides.

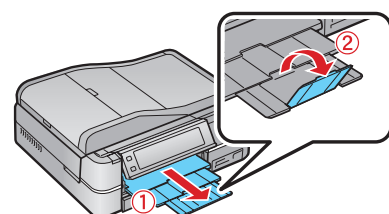
6 Slide the edge guides against the paper.



7 Keep the cassette flat as you insert it.

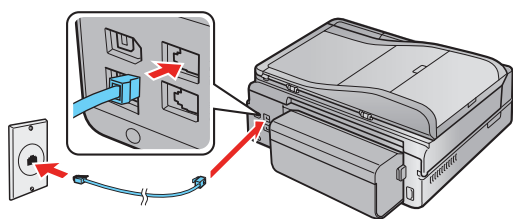


8 Extend the output tray and flip up the stopper.



6 Connect the phone cord

To fax, connect the included phone cord from a telephone wall jack to the **LINE** port on your product. To connect a telephone or answering machine, see the *Quick Guide*.



Note: If you're connecting to a DSL phone line, you must use a DSL filter or you won't be able to fax. Contact your DSL provider for the necessary filter.

7 Choose your connection

You can connect your printer to your existing network (wireless or wired) or directly to your computer using a USB cable (not included). See below for details on each connection method.

Wireless Connection

You must install the software on every computer from which you want to print. For the first installation, we recommend using a USB cable (not included) to simplify wireless setup. After the printer is connected to the network, you will be prompted to remove the USB cable.

If you're using Mac OS® X 10.6.x or don't have a USB cable, you will need to use the control panel on the printer to select wireless settings instead.

Make sure you know your network name (SSID) and network password:

- Network name _____
- Network password _____

If you don't have this information, contact the person who set up your network.

Direct USB Connection

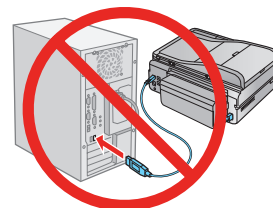
Make sure you have a USB cable (not included). Do not connect the printer to your computer until you're instructed to do so.

Wired Ethernet Connection

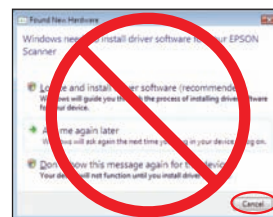
Make sure you have an Ethernet® network cable (not included). You must install the software on every computer that will print to the printer.

8 Install software

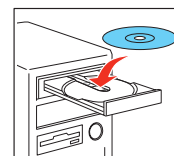
- 1 Make sure the printer is **NOT CONNECTED** to your computer.



Windows®: If you see a Found New Hardware screen, click **Cancel** and disconnect the USB cable. You can't install your software that way.



- 2 Insert your product CD.



Windows: If you see the AutoPlay window, click **Run Setup.exe**. If you see the User Account Control screen, click **Yes** or **Continue**.

Macintosh®: Double-click the  **Epson** icon.

- 3 Click **Install** and follow the on-screen instructions.



For more information on network setup, see your *Quick Guide*.

Any questions?

Quick Guide

Basic steps for copying, printing, faxing, scanning, and additional network setup instructions.



On-screen help with your software

Select **Help** or **?** when you're using your software.

User's Guide

Click the shortcut on your desktop or in the Applications/ Epson Software/Guide folder to access the online *User's Guide*, software downloads, Epson Supplies CentralSM, and more (requires an internet connection).



Epson Technical Support

Visit epson.com/support (U.S.) or epson.ca/support (Canada) where you can download drivers, view manuals, get FAQs, or e-mail Epson.

To speak with a support specialist, call:

U.S.: (562) 276-4382, 6 AM to 8 PM, Pacific Time, Monday through Friday, and 7 AM to 4 PM, Saturday.

Canada: (905) 709-3839, 6 AM to 6 PM, Pacific Time, Monday through Friday.

Days and hours of support are subject to change without notice. Toll or long distance charges may apply.

Software Technical Support

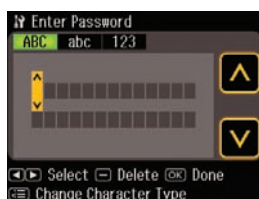
ABBYY® FineReader®
(408) 457-9777
www.abbyyusa.com
support@abbyyusa.com

Any problems?

If you experience problems during setup, see below:

Network setup was unsuccessful.

- Make sure you select the right network name (SSID).
- If you see a firewall alert message, click **Unblock** or **Allow** to let setup continue.
- If your network has security enabled, make sure you enter your network password (WEP key or WPA passphrase) correctly. If it has uppercase (**ABC**) or lowercase (**abc**) letters, make sure you enter them correctly.



Press **Menu** to select uppercase letters (**ABC**), lowercase letters (**abc**), or numbers and symbols (**123**).

Press **▲** or **▼** until you see the character you want.

Press **◀** or **▶** to move the cursor.

Press **-** to delete.

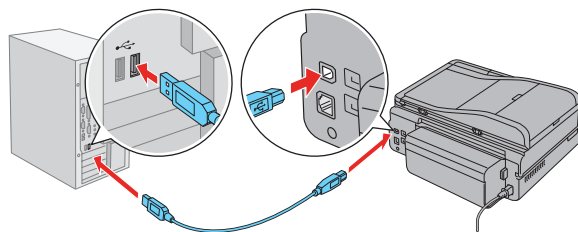
Press **OK** when you're finished entering your password.

You see error messages on the printer's screen.

See your *Quick Guide* for troubleshooting information.

Setup is unable to find my printer after connecting it with a USB cable.

Make sure it is securely connected as shown:



Need paper and ink?

Try Epson premium papers with Claria® ink for better than photo lab quality results. For the right supplies at the right time, you can purchase them at Epson Supplies Central at www.epson.com/ink3 (U.S. sales) or www.epson.ca (Canadian sales). You can also purchase supplies from an Epson Authorized reseller. To find the nearest one, call 800-GO-EPSON (800-463-7766).

DESIGNED *for*
EXCELLENCE™

Genuine Epson Paper

Epson offers a wide variety of papers to meet your needs; visit Epson Supplies Central for more information.



Ultra Premium Photo Paper Glossy
Instant-drying high gloss paper for long-lasting photos, suitable for framing.

Genuine Epson Inks



Look for the numbers below to find your cartridges. It's as easy as remembering your number!



Artisan 835 Series Ink Cartridges

	Color	Standard-capacity	High-capacity
●	Black	—	98
●	Cyan	99	98
●	Magenta	99	98
●	Yellow	99	98
●	Light Magenta	99	98
●	Light Cyan	99	98

Epson is a registered trademark, Epson Exceed Your Vision is a registered logomark and Supplies Central is a service mark of Seiko Epson Corporation. Artisan and Claria are registered trademarks and Designed for Excellence is a trademark of Epson America, Inc.

General Notice: Other product names used herein are for identification purposes only and may be trademarks of their respective owners. Epson disclaims any and all rights in those marks.

This information is subject to change without notice.

© 2010 Epson America, Inc. 5/10

CPD-27979

Printed in XXXXXX

Free Manuals Download Website

<http://myh66.com>

<http://usermanuals.us>

<http://www.somanuals.com>

<http://www.4manuals.cc>

<http://www.manual-lib.com>

<http://www.404manual.com>

<http://www.luxmanual.com>

<http://aubethermostatmanual.com>

Golf course search by state

<http://golfingnear.com>

Email search by domain

<http://emailbydomain.com>

Auto manuals search

<http://auto.somanuals.com>

TV manuals search

<http://tv.somanuals.com>