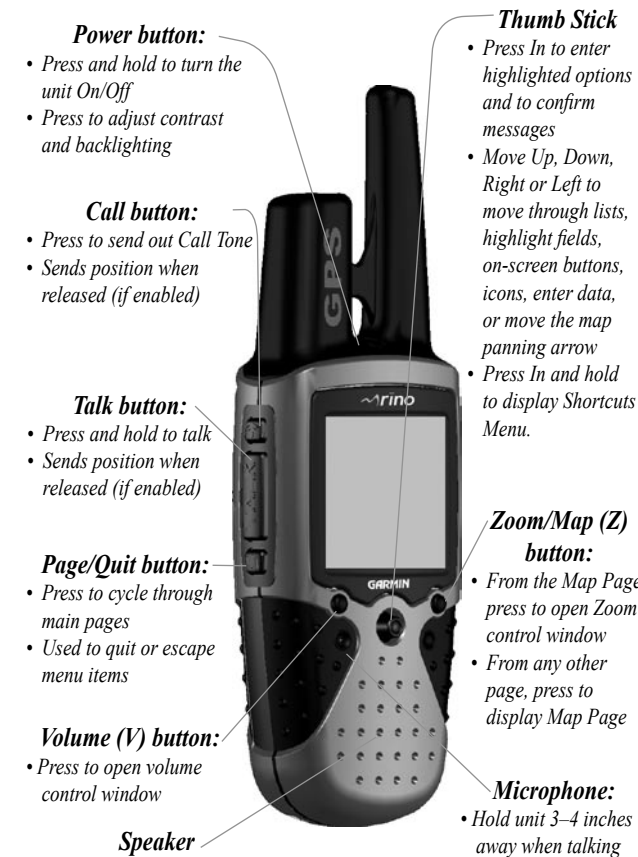


## Quick Start Guide



### Step-by-Step Instructions to Get You Started

(Turn this page and begin with Step 1) →

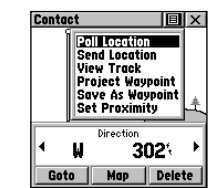


## Polling a Location

If you have not heard from a contact in a while and would like to know that contact's current location, you may "poll" the contact's location. This will update that contact's location in your Rino 130.

### To poll a location:

1. Press the **Thumb Stick In** and hold it until the Shortcuts Menu is displayed, or press the **Page** button until the Main Menu is displayed.
2. Highlight **Find 'N Go** and press the **Thumb Stick In**. Highlight **Contacts** and press the **Thumb Stick In**.
3. Highlight the contact that you want to poll and press the **Thumb Stick In** to display the Contact Review page.
4. Highlight the **Option Menu** button and press the **Thumb Stick In**.
5. Select **Poll Location** and press the **Thumb Stick In**.



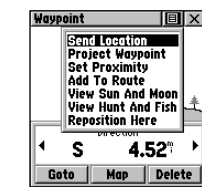
Polling a contact's location

## Sending a Location

You can send any location that you have available in your Find 'N Go menu. These may be waypoints, contacts, cities, exits, or any other data that is loaded in the unit. Below are the steps to send a waypoint.

### To send a location (waypoint) using Find 'N Go:

1. Press the **Thumb Stick In** and hold it until the Shortcuts Menu is displayed, or press the **Page** button until the Main Menu is displayed.
2. Highlight **Find 'N Go** and press the **Thumb Stick In**. Highlight **Waypoints** and press the **Thumb Stick In**. Select **Nearest** or **By Name** and press the **Thumb Stick In**.
3. Highlight the waypoint that you want to send and press the **Thumb Stick In** to display the Waypoint Review page.
4. Highlight the **Option Menu** button and press the **Thumb Stick In**.
5. Select **Send Location** and press the **Thumb Stick In**.



Send Location

The location is sent to all Rinos on the same channel and squelch code as you. They can then choose to **Goto** that location, view the location on the map (**Map**), or save the location (**OK**).

## Using Peer-to-Peer Positioning

The Rino's most unique feature is Peer-to-Peer positioning, sending the location of one Rino unit to other Rino units. Peer-to-Peer positioning allows you to track the movement of other Rino users and even navigate to their location.

### To send your location:

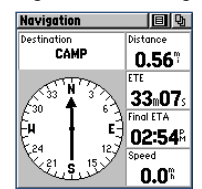
Press and release either the **Call** or **Talk** button. Your Rino 130 automatically sends out its location. Other Rino users monitoring the same channel and squelch code receive this information.

## Navigating with Your Rino 130

You can navigate to a waypoint, city, exit, or a contact's location. Using optional detailed maps, you can also navigate to points of interest, addresses, and intersections.

### To begin navigation using Find 'N Go:

1. Press the **Thumb Stick In** to display the Shortcuts Menu.
2. Highlight **Find 'N Go** and press the **Thumb Stick In**.
3. Highlight **Waypoints** and press the **Thumb Stick In**. Select the desired option (by **Nearest** or by **Name**), and press the **Thumb Stick In**.
4. Highlight the desired waypoint and press the **Thumb Stick In**.
5. With the Waypoint Page displayed, highlight the **Goto** button at the bottom of the page and press the **Thumb Stick In** to begin navigation. The Navigation Page automatically opens to guide you to your destination. See below for more information.



Navigation Page

### Navigation Page

The two main components of the Navigation Page are the compass ring and the pointer. As you move, the compass ring rotates showing your current direction of travel at the top of the display. The pointer points toward your destination. When the pointer is aligned with the vertical line at the top of the compass ring, you are on a direct course toward your destination. The unit has to be moving to navigate. If you are standing still or moving very slowly, the navigation data may not be accurate.

## Using Contacts

The first time you receive a signal from another Rino user, the New Contact page is displayed. From the New Contact page you can show the user's location on your Map, **Goto** that position, select **OK** to add them to your contact list, or press the **Page/Quit** button to disregard the contact. Every time you receive signals from contacts, your map is updated showing their new position. A Track Log of their movement is created and shown on your map.



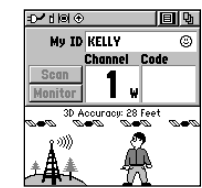
New Contact Page

## Using the Weather Radio

The Weather Radio provides a constant update of weather conditions, which is helpful while outdoors or planning a trip. Seven Weather Radio channels are available. For more information about the Weather Radio, refer to the *Owner's Manual*.

### To turn the Weather Radio on:

1. Open the Radio Page by pressing the **Page** button.
2. Highlight the **Option Menu** button and press the **Thumb Stick In**.
3. Highlight **Use Weather Radio** and press the **Thumb Stick In**.



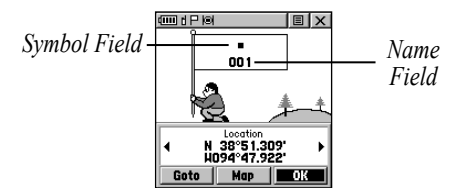
Radio Page with Weather Radio On

## Marking a Waypoint

Marking a waypoint is simply capturing your current location and storing it in the unit's memory. The unit must be turned on and tracking satellites to mark a waypoint.

### To mark a waypoint:

1. Press the **Thumb Stick In** and hold it until the Shortcuts Menu is displayed.
2. Highlight **Mark Waypoint** and press the **Thumb Stick In** to display the Mark Waypoint Page shown below.



Mark Waypoint Page

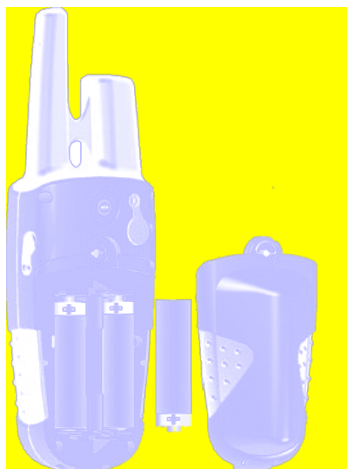
3. Highlight the **Name** field and press the **Thumb Stick In**. Enter a new name. When finished, highlight **OK** then press the **Thumb Stick In**.
4. Highlight the **Symbol** field and press the **Thumb Stick In**. Choose a symbol then press the **Thumb Stick In** to accept the selection.
5. Highlight the **OK** button at the bottom of the page and press the **Thumb Stick In** to save the waypoint.

## 1 Installing the Batteries

The Rino 130 operates on three “AA” Alkaline batteries (not included) located in the back of the unit. Rechargeable batteries may also be used. See the Rino 130 *Owner's Manual* for setting battery type. The unit is factory set to use Alkaline batteries. Stored data is not lost when the batteries are removed.

### To install batteries:

1. Remove the battery cover on the back of the unit. Turn the D-ring 1/4 turn counter-clockwise and pull the cover off.




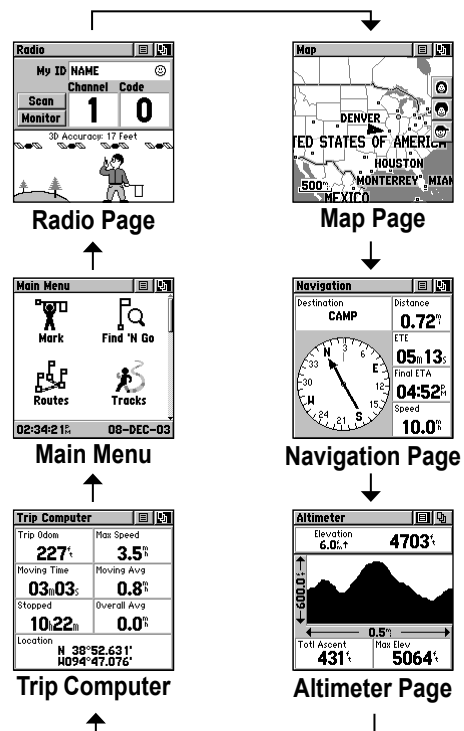
2. Insert batteries observing the polarity reference molded into the unit housing. Orient the negative (-) battery terminal toward the spring.
3. Reinstall the battery cover by inserting the bottom hinge clip and closing the cover. Turn the D-ring 1/4 turn clockwise.

### Notes on battery use:

- When replacing batteries, use only new or fully recharged batteries. Rechargeable batteries may typically display less capacity than Alkaline batteries.
- Do not mix different types of batteries together.
- Remove the batteries from the unit if you do not plan to use it for several months. Follow the battery manufacturer's instructions for proper care and disposal of used batteries.
- Extensive use of backlighting, WAAS, and/or FRS or GMRS will significantly reduce battery life.

## 2 Viewing the Main Pages

All of the information you need to operate the Rino 130 can be found on six default main pages (or display screens). Simply press and release the **Page** key to cycle through the Radio Page, Map Page, Navigation Page, Altimeter Page, Trip Computer, and Main Menu Page. You can also access the Main Pages by pressing the on-screen Main Page Menu button .



While these six Main Pages provide you with different types of information, they all share common features like Option Menus and a Main Page Menu. Access the Option Menu and Main Page Menu by using the **Thumb Stick** to highlight the on-screen button. Then press the **Thumb Stick In**.

Main Page Menu button




Option Menu button

## 3 Initializing the GPS

Before the Rino 130 can be used for navigation, the GPS receiver must be initialized. Initialization allows the Rino 130 to receive and store satellite information and begin using the satellites for navigation. The initialization is automatic and should only take a few minutes.

### To initialize the unit (acquire satellites):

1. Take the Rino 130 outside where it has an unobstructed view of the sky and turn it on.
2. The unit begins to search for satellite signals. “Tracking Satellites” is displayed while the unit is initializing.  Tracking Satellite Signals
3. When the GPS is initialized and ready for navigation, the message “3D Accuracy” is displayed on the Radio Page.

If for some reason the unit is not able to gather the necessary satellite information, refer to the Rino 130 *Owner's Manual*.

## 4 Entering Data

Use the **Thumb Stick** like a joystick that you control with your thumb. Move the **Thumb Stick** Up, Down, Right, or Left. Press the **Thumb Stick In** to select an item on the screen, much like pressing the Enter button on a computer keyboard.

Sometimes you will need to spell out things using the **Thumb Stick** and an on-screen keyboard. To enter characters with the on-screen keyboard, press the **Thumb Stick** Up, Down, Left, or Right to highlight the desired character (letter, number, or a space). Press the **Thumb Stick In** to select that highlighted character. Choose **Back**



Example of an on-screen keyboard

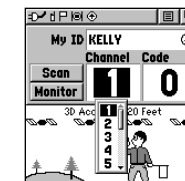
to delete the character to the left of the cursor. When you are finished entering characters, highlight **OK** and press the **Thumb Stick In**.

## 5 Setting Up the Radio

Select a channel and squelch code to transmit on. Be sure to tell the other members of your group what channel and squelch code you are using so they can communicate with you.

### To select a channel:

1. Highlight the **Channel** field and press the **Thumb Stick In**.
2. Select an available channel and press the **Thumb Stick In** to accept the selection.



Selecting the channel

### To select a squelch code:

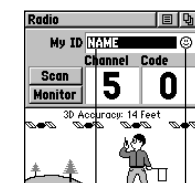
1. Select the **Code** field and press the **Thumb Stick In**.
2. Select one of the thirty-eight (38) available codes. Press the **Thumb Stick In** to accept the selection.

## 6 Changing the Name and Symbol

The My ID (name) and symbol (icon) identify you to other Rino users.

### To change the unit ID/name:

1. Highlight the **My ID** field and press the **Thumb Stick In** to activate the field and display the keyboard.
2. Highlight **Clear**, then press the **Thumb Stick In** to clear the default ID.
3. Enter an ID, or name, up to ten (10) characters long.
4. When you have entered your new ID, highlight **OK** and then press the **Thumb Stick In**.



My ID field Symbol field

### To change the user symbol:

1. Highlight the face symbol to the right of the **My ID** field. Press the **Thumb Stick In** to show a list of available face symbols.
2. Highlight the desired symbol from the list of selections.
3. Press the **Thumb Stick In** to select that symbol.

## 7 Transmitting with the Rino 130

The Rino 130 can transmit to and receive messages from other FRS radio users on the same channel and squelch code. To use all of the features of the Rino, communicate with other Rino units.

### To transmit on your Rino 130:

1. Press and hold the **Talk** button and speak in a normal voice into the microphone area on the front of the Rino 130 from a distance of about 3–4 inches.
2. When you are finished talking, release the **Talk** button. Your location is updated on all receiving Rinos.
3. If you want to call another user or update your location on another Rino, press and release the **Call** or **Talk** button.

## 8 Adjusting Volume and Backlight

If you need to adjust the volume, press the **V (Volume)** button on the front of the unit to display an adjustment slider. To change the volume, press the **Thumb Stick Up** or **Down** to raise or lower the slider. When you have the proper level set, press the **V** button or press the **Thumb Stick In**.

If lighting conditions make it hard for you to see the display screen, you can adjust the contrast or turn on the backlight.

### To turn on the backlight and adjust the screen contrast:

1. With the unit on, briefly press and release the **Power** button to display the Backlight and Contrast adjustment.
2. Press the **Power** button or press Up or Down on the **Thumb Stick** to turn the Backlight on or off. A light bulb symbol appears on the top Status Bar when the backlight is on. The backlight remains on until the set timeout period is completed or the Power button is pressed again. The unit is factory set to timeout 15 seconds after the last button press.
3. Move the **Thumb Stick** to Left (Lighter) or Right (Darker) to adjust the contrast.
4. Press the **Thumb Stick In** to close the Backlight and Contrast window.

## Free Manuals Download Website

<http://myh66.com>

<http://usermanuals.us>

<http://www.somanuals.com>

<http://www.4manuals.cc>

<http://www.manual-lib.com>

<http://www.404manual.com>

<http://www.luxmanual.com>

<http://aubethermostatmanual.com>

Golf course search by state

<http://golfingnear.com>

Email search by domain

<http://emailbydomain.com>

Auto manuals search

<http://auto.somanuals.com>

TV manuals search

<http://tv.somanuals.com>