



USER GUIDE

Gateway FPD1785/FPD1985 Monitor



Contents

Using Your Gateway Flat Panel Monitor	1
Connecting the monitor	2
Adjusting the stand	4
Rotating the screen image	5
Adjusting monitor height tension	5
Adjusting tilt (vertical viewing angle) tension	6
Ergonomic guidelines	7
Starting the monitor	8
Adjusting monitor settings	9
Monitor buttons	9
On-screen display options	10
Windows controls	12
Video modes	16
Power management	17
ENERGY STAR	17
Energy declaration	17
Maintenance	18
Troubleshooting	18
No power	18
No picture	19
Monitor colors are wrong	19
Picture has shadows or "ghosts"	19
Color is not uniform	20
Image is not sized or centered correctly	20
The monitor has pixels that are always dark or too bright	20
Specifications	20
17-inch monitor	21
19-inch monitor	22
Safety, Regulatory, and Legal Information	23
Recycling	25
EPA ENERGY STAR	25

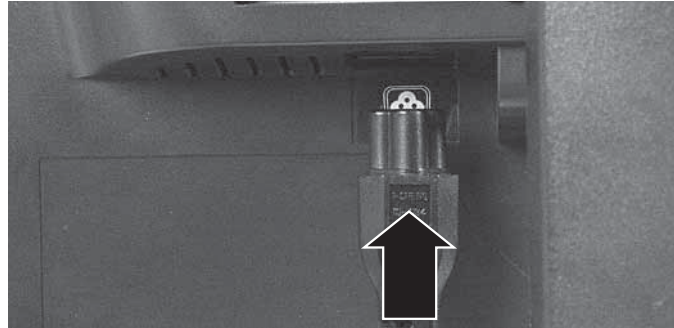
Using Your Gateway Flat Panel Monitor

- Connecting the monitor
- Adjusting the stand
- Starting the monitor
- Adjusting monitor settings
- Windows controls
- Power management
- Maintenance
- Troubleshooting
- Specifications

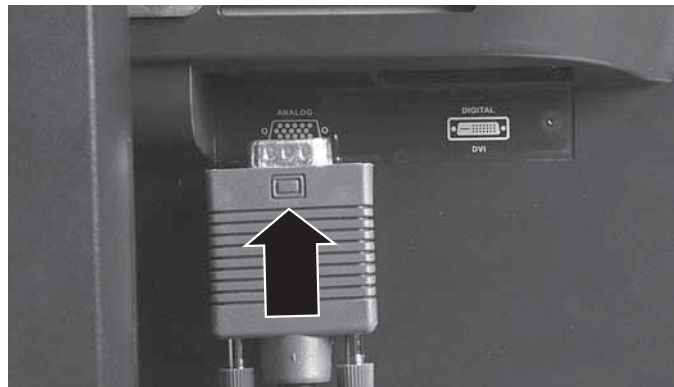
Connecting the monitor

▶ **To connect the monitor:**

- 1 Position your computer and the monitor so you can reach the back of each.
- 2 Connect the power cord to the power connector under the back of the monitor.

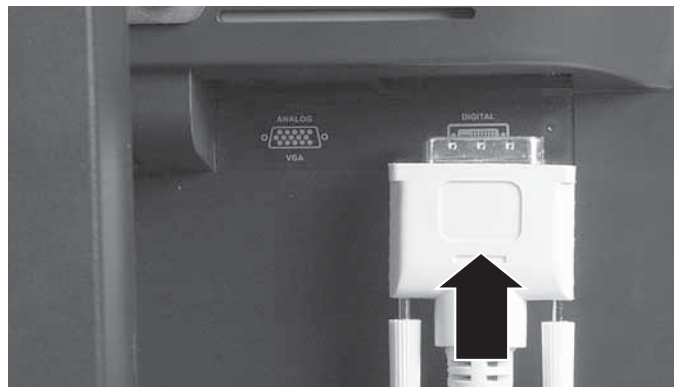


- 3 Connect the blue VGA video cable to the blue video connector under the back of the monitor.



- OR -

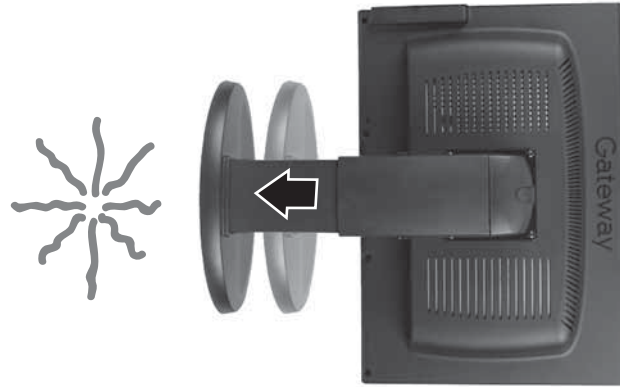
If your computer has a digital video connector (DVI), connect a DVI video cable (not included) to the white connector under the back of the monitor. You can buy a DVI video cable from www.gateway.com.



- 4 Make sure that your computer is turned off, then connect the other end of the video cable to the matching video port on the back of your computer.
- 5 Plug the power cord into a correctly grounded electrical outlet.

Warning

Because lifting your monitor off the desktop surface takes weight off from the stand, the stand will extend suddenly, possibly causing damage to equipment or injury to yourself.



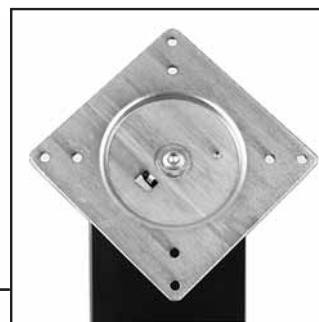
To avoid injury, always lift the monitor so that the stand adjusts to its full height before moving the monitor or turning it around.



Adjusting the stand



Tilts from -5° to 35°



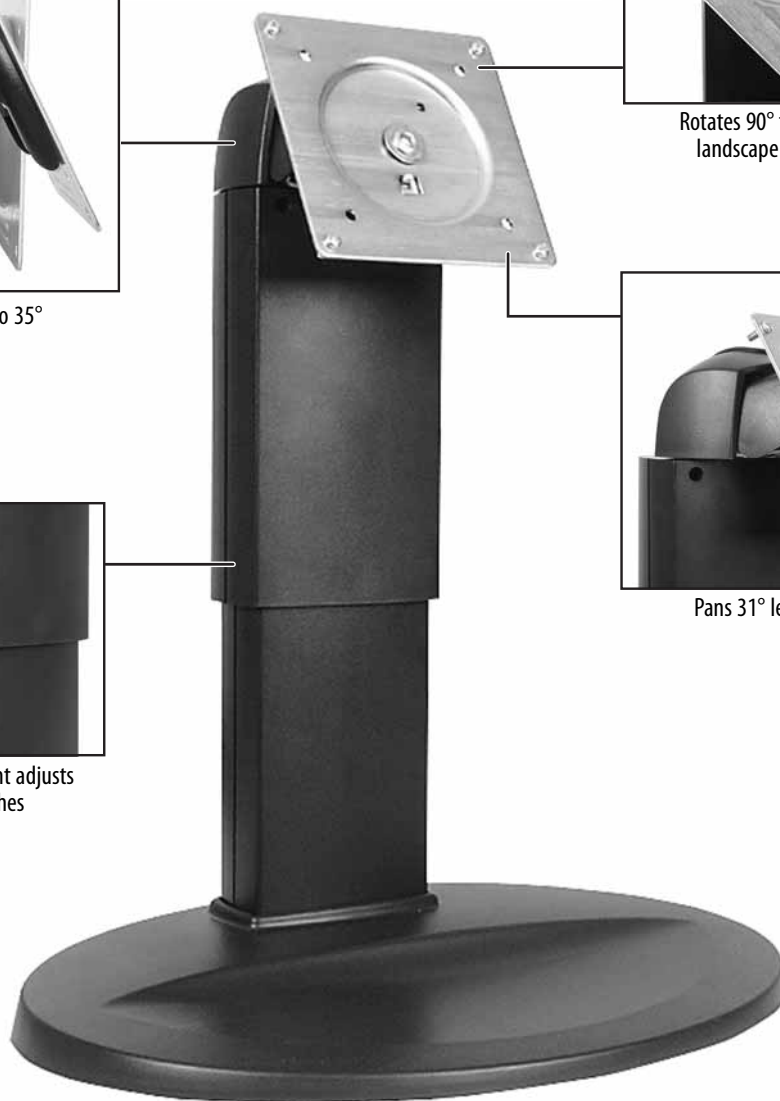
Rotates 90° for portrait or landscape orientation



Pans 31° left and right



Vertical height adjusts five inches



Rotating the screen image

Depending on the graphics card or device driver on your computer, you may be able to rotate the on-screen image.

▶ **To rotate the screen image:**

- On Gateway computers, you can rotate the image by pressing **CTRL+ALT+[LEFT ARROW]**, and return it to normal by pressing **Ctrl+Alt+[UP ARROW]**.

For more information, click **Start, Control Panel, Appearance and Themes** (if necessary), **Display**, the **Settings** tab, **Advanced**, then click the graphics card-specific tab.

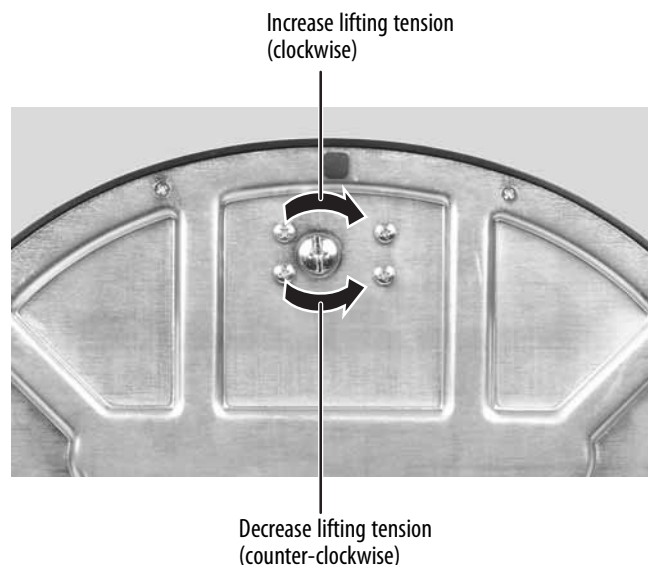


Adjusting monitor height tension

The stand is factory adjusted to maintain the adjusted height for Gateway 17-inch and 19-inch flat-panel monitors. If you use this stand with a lighter monitor without adjusting the weight setting of the stand, the stand will raise your monitor, and if you use a heavier monitor, the stand will lower your monitor.

▶ **To test and adjust your monitor's height tension:**

- 1 Move your monitor up and down through its entire vertical range. If it does not stay in place when you let go, you need to change the adjustable stand's height tension. You also need to adjust the stand if the amounts of force required to raise and lower the monitor are not equal.
- 2 Adjust the height tension screw so the monitor stays in place when you let go. If the monitor lowers by itself when you let go, turn the screw clockwise several complete turns. If the monitor rises when you let go, turn the screw counter-clockwise several complete turns. You may need to turn the screw several times before the tension is correct for your monitor.



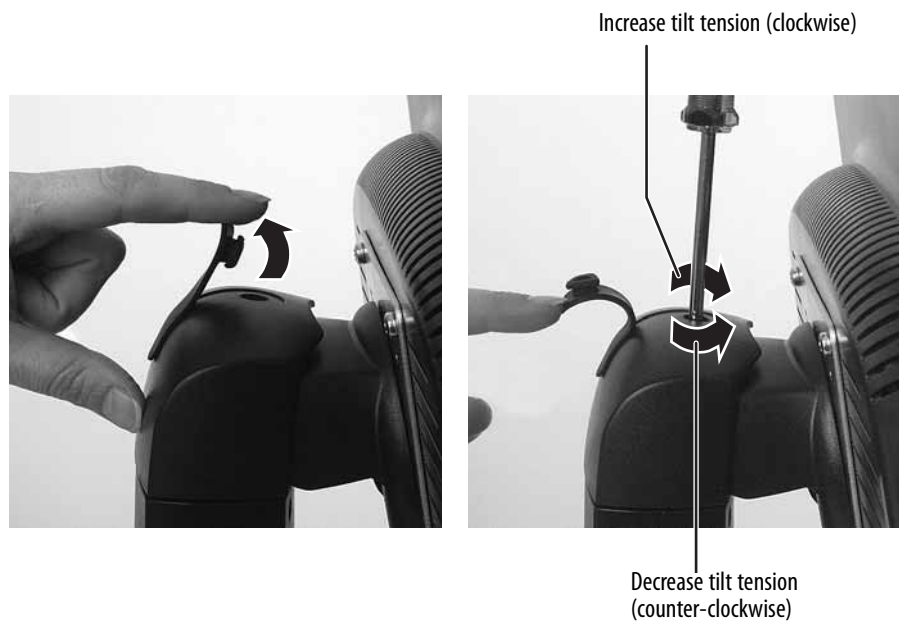
- 3 Adjust the height tension screw so raising and lowering forces are equal. After the forces are equalized, turn the tension screw clockwise 2 to 4 turns to slightly decrease the lifting tension.
- 4 For optimum viewing, adjust the height so the top of monitor is about 1 inch below eye level.



Adjusting tilt (vertical viewing angle) tension

▶ To test and adjust tilt tension:

- 1 Tilt the monitor back and forth through its entire tilt range. If it does not stay in place or if movement in one direction is stiff, the tilt tension needs adjustment.
- 2 Pull the black rubber cover away from the top of the stand, then hold it back with one hand.



- 3 To increase tilt tension, turn the screw clockwise with a Phillips screwdriver. To decrease tilt tension, turn the screw counter-clockwise. Adjust until the monitor stays in place and the up and down tilting tensions are equal.



Ergonomic guidelines

The recommended mounting heights, the range of adjustability required to provide comfortable use by a range of users, and the forces required for making adjustments to the monitor are based upon the following guidelines. These guidelines are based on available scientific literature and published standards.

Screen height

The recommended screen height for monitors (except in special circumstances, such as for bifocal use) is that the top of the monitor should be set at or slightly below (about 1 inch, or 25 mm) the user's eye level while the user is sitting in a comfortable working posture. This guideline places the center of the screen at an ideal 15° to 20° viewing angle for most desktop monitors. If the monitor has multiple users, the screen height should be easily adjustable to accommodate each user's height and preference.

Screen tilt

The screen should be tilted so the user's line of sight is perpendicular to the screen. This angle creates the most consistent viewing distance when scanning from the top of the screen to the bottom. You may need to adjust lighting to avoid screen glare when the screen is tilted upward.

Screen distance from user

The monitor screen should first be placed at arms length from the user, then adjusted back and forth to suit individual preference. Vertical adjustments should not result in a change in viewing distance.

Stand adjustment forces

The force required to make any adjustment to the stand (height, tilt, pan, or portrait/landscape orientation) should not exceed 5.1 lbs. (2.32 kg).

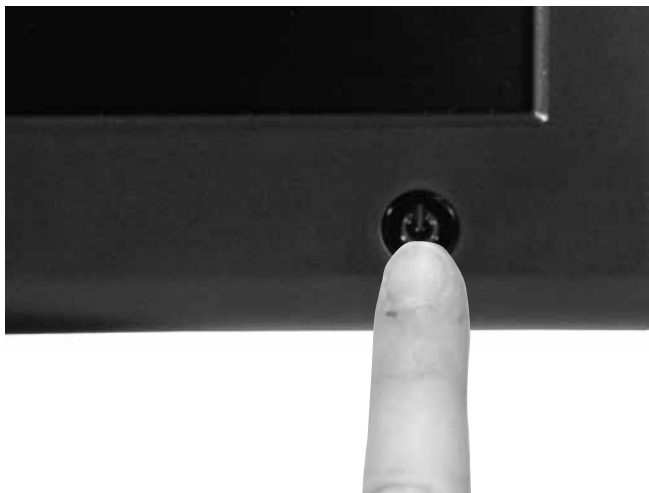
Starting the monitor

 **Important**

The appearance of your monitor may vary from that shown.

 **To start the monitor:**

- 1 Press the power button on the front of monitor. The power LED on the power button turns on.



- 2 Turn on your computer.

After your computer is running, the power LED on the monitor's power button should be blue. Allow about 10 seconds for the monitor image to appear. If the power LED is not blue or you do not see a monitor image, check the connections. For more troubleshooting information, see "Troubleshooting" on page 18.

- 3 Adjust the tilt of the monitor for the best viewing angle.

- 4 After you see the Windows desktop, press the **Auto** button on the right side of the monitor to automatically adjust your monitor image to the ideal settings.

- 5 Use the on-screen display (OSD) to adjust other monitor settings. For more information, see "Adjusting monitor settings" on page 9.

 **Important**

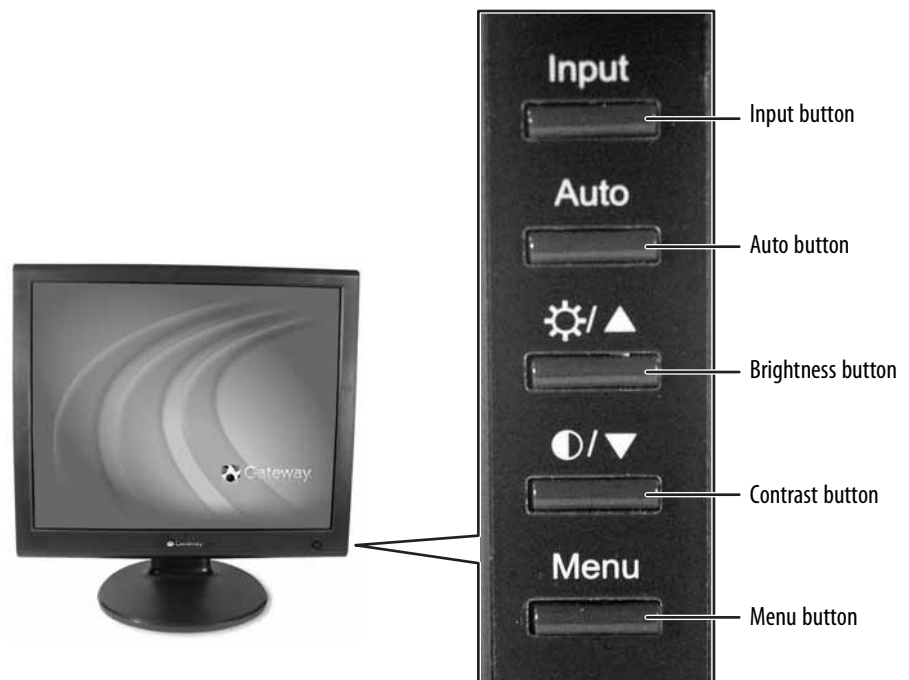
*When adjusting the monitor settings, always press the **Auto** button before entering the OSD. This will automatically adjust the monitor image to the ideal settings for the current screen resolution.*

Adjusting monitor settings

Use the monitor controls (located on the monitor itself) and computer controls (accessible through Windows) to adjust the monitor image. For more information about computer controls, see "Windows controls" on page 12.

Monitor buttons

This monitor features an on-screen display (OSD) that lets you adjust contrast, brightness, and other settings for the monitor. The monitor saves changes you make to the settings, even if you turn off the monitor.



Important

The appearance of your monitor may vary from that shown.

- **Input**
OSD active: Press to move to the previous menu.
OSD inactive: Press to select the video source.
- **Auto**
OSD active: Press to open a menu or setting.
OSD inactive: Press to automatically optimize the monitor's image position, clock, and phase.
- **☀/▲ (brightness)**
OSD active: Press to move up through menu selections and adjust OSD options.
OSD inactive: Press to adjust the brightness.
- **●/▼ (contrast)**
OSD active: Press to move down through menu selections and adjust OSD options.
OSD inactive: Press to adjust the contrast.
- **Menu**
Press to open the OSD. Press again to exit the OSD.

On-screen display options

Adjusting OSD settings

 **Tips & Tricks**

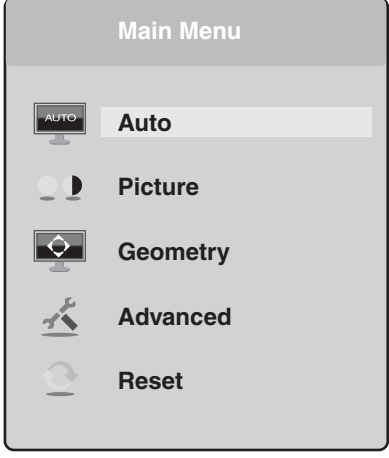
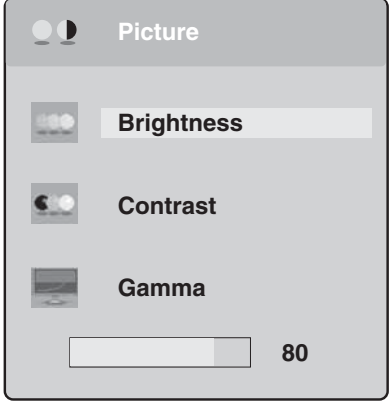
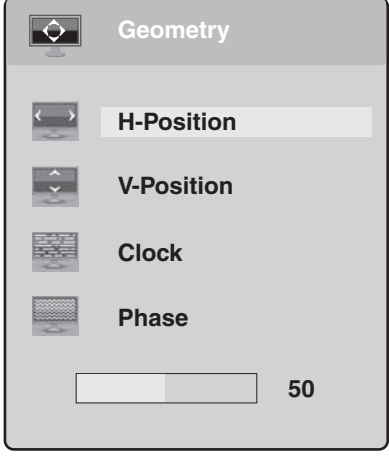
While the OSD is active, on-screen labels appear next to the buttons to help you identify them.

**To adjust the OSD settings:**

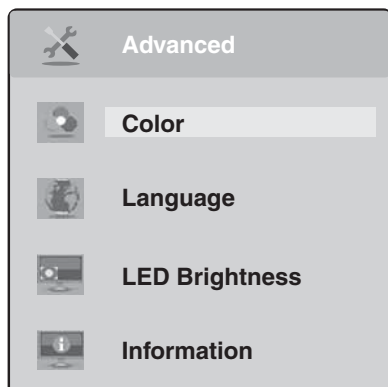
- 1 Press the **Auto** button. The monitor image is automatically adjusted to the ideal settings for your current screen resolution.
- 2 Press the **Menu** button. The OSD menu opens.
- 3 Use the Δ and ∇ buttons to highlight a setting, then press the **Auto** button to open the selected menu or setting.
- 4 Use the Δ and ∇ buttons to adjust the setting to the desired level or change the option.
- 5 Press the **Input** button to return to a previous menu.
- 6 When you have finished making all adjustments, press the **Menu** button at the Main Menu to exit.



OSD menus

OSD Menu	Description
<p>Main menu</p> 	<p>Auto—Automatically adjusts your monitor to its optimum settings. Picture—Opens the Picture menu, where you can adjust brightness, contrast, and gamma. Geometry—Opens the Geometry menu, where you can adjust image size and minimize distortions. Advanced—Opens the Advanced menu, where you can adjust color balance, change the OSD language, and display information about current monitor settings. Reset—Resets the monitor to its factory settings.</p>
<p>Picture menu</p> 	<p>Brightness—Adjusts the amount of light in the darkest portion of the picture. Use the lowest brightness setting you are comfortable with to maximize the life of the monitor backlights. You may need to readjust brightness after the monitor has warmed up. Contrast—Adjusts the level of white between the lightest and darkest portions of an image. Gamma—Customizes the gamma level. High gamma levels increase white levels and low gamma levels increase contrast.</p>
<p>Geometry menu</p> 	<p>H-Position—Moves the monitor image left and right. V-Position—Moves the monitor image up and down. You can also press the Auto button to configure the vertical and horizontal position automatically. Clock—Minimizes any vertical bars or stripes visible on the screen background. The horizontal screen size will also change. Phase—Minimizes any horizontal distortion and clears or sharpens the displayed characters.</p>

OSD Menu	Description
Advanced menu	<p>Color—Customizes the color levels.</p> <p>Language—Changes the language of the OSD.</p> <p>LED Brightness—Changes the brightness of the Standby and Power LED to Day Mode or Nite Mode.</p> <p>Information—Displays current screen resolution.</p>



Windows controls

Color depth, screen resolution, and screen fonts are three of the most basic monitor settings you may need to change.

Adjusting the color depth

Color depth is the number of colors your video card uses. Most images look best displayed with the maximum number of colors available.

Windows lets you choose from several color depth settings for the monitor. We recommend that you use the 32-bit True Color setting or the highest setting available at all times.

If the color in your images seems “false” or “jumpy,” especially after you have played a game or run a video-intensive program, check the color depth setting and return it to 32-bit True Color, if necessary.

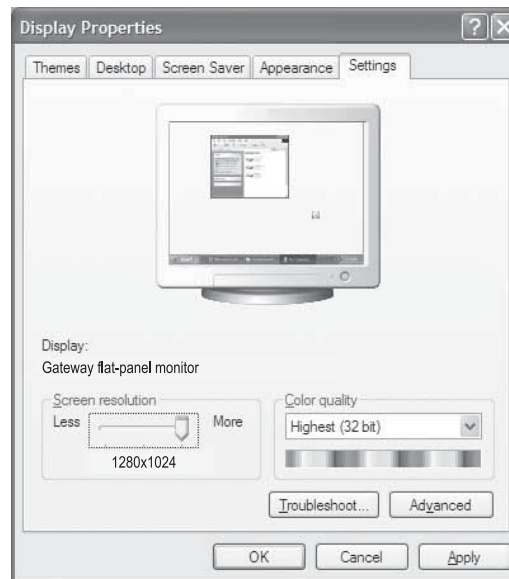
Help & Support

For more information about adjusting monitor settings, click **Start**, then click **Help and Support**. Type the phrase **changing display settings** in the **Search** box, then click the arrow.

To change the color depth:

- 1 Click **Start**, then click **Control Panel**. The *Control Panel* window opens. If your Control Panel is in Category View, click **Appearance and Themes**.
- 2 Click/Double-click the **Display** icon. The *Display Properties* dialog box opens.

3 Click the **Settings** tab.



- 4 Click the arrow button to open the **Color quality** list, then click the color depth you want.
- 5 Click **OK**, then click **Yes** to save your changes.



Adjusting the screen resolution

You can change the screen resolution to a size you prefer. For example, you can increase the resolution to fit more icons on your desktop, or you can decrease the resolution to make reading and identifying objects on the monitor easier. The higher the resolution, the smaller individual components of the screen (such as icons and menu bars) appear.

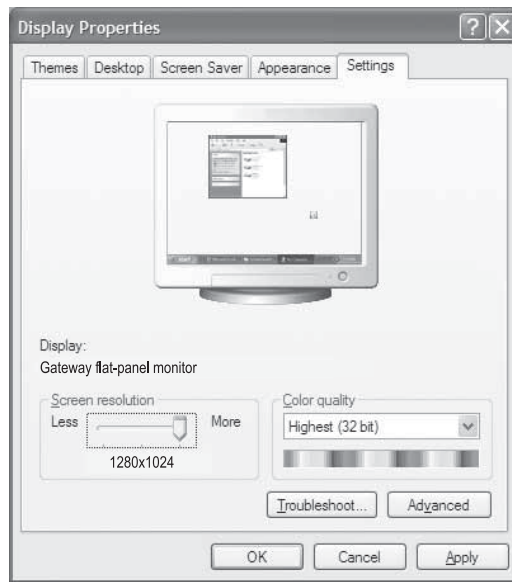


To change the screen resolution:

- 1 Click **Start**, then click **Control Panel**. The *Control Panel* window opens. If your *Control Panel* is in Category View, click **Appearance and Themes**.
- 2 Click/Double-click the **Display** icon. The *Display Properties* dialog box opens.



Help & Support
For more information about adjusting screen resolution, click **Start**, then click **Help and Support**. Type the phrase **changing screen resolution** in the **Search** box, then click the arrow.

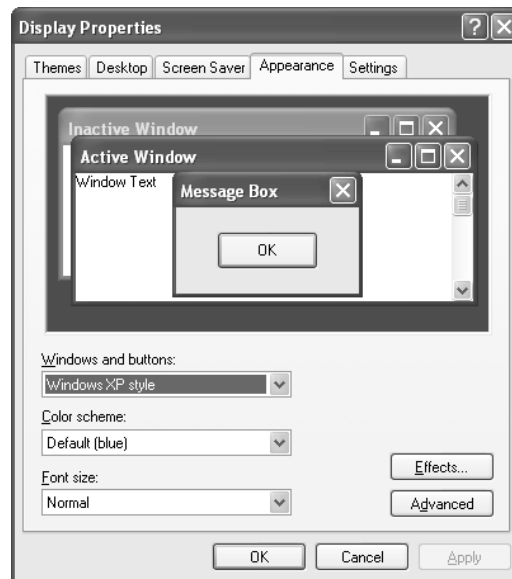
3 Click the **Settings** tab.**4** Drag the **Screen resolution** slider to the size you prefer.**5** Click **OK**, then click **Yes** to save your changes.**Clarifying screen fonts**

You can change the display fonts to ClearType for smoother screen fonts.

▶ To change the display fonts to ClearType:

- 1 Click **Start**, then click **Control Panel**. The *Control Panel* window opens. If your Control Panel is in Category View, click **Appearance and Themes**.
- 2 Click/Double-click the **Display** icon. The *Display Properties* dialog box opens.

3 Click the **Appearance** tab.



- 4 Click the **Effects** button. The *Effects* dialog box opens.
- 5 Click to select the **Use the following method to smooth the edges of screen type** check box.
- 6 Click the arrow to open the list, then click **ClearType**.
- 7 Click **OK**, then click **OK** again.



Video modes

Your monitor supports several video modes. If you do not use the best mode for the monitor, the monitor image may look slightly "fuzzy."

17-inch monitor

Mode	Mode name and resolution	Horizontal frequency (kHz)	Vertical frequency (Hz)
1	VGA 720 × 400	31.469	70.087
2	VGA 640 × 480	31.469	59.941
3	VESA 640 × 480	37.861	72.810
4	VESA 640 × 480	37.500	75.000
5	VESA 800 × 600	35.156	56.250
6	VESA 800 × 600	37.879	60.317
7	VESA 800 × 600	48.077	72.188
8	VESA 800 × 600	46.875	75.000
9	VESA 1024 × 768	48.363	60.004
10	VESA 1024 × 768	56.476	70.069
11	VESA 1024 × 768	60.023	75.029
12	VESA 1280 × 1024	63.980	60.020
13	VESA 1280 × 1024	79.976	75.025

19-inch monitor

Mode	Mode name and resolution	Horizontal frequency (kHz)	Vertical frequency (Hz)
1	VGA 720 × 400	31.469	70.087
2	VGA 640 × 480	31.469	59.941
3	VESA 640 × 480	37.861	72.810
4	VESA 640 × 480	37.500	75.000
5	VESA 800 × 600	35.156	56.250
6	VESA 800 × 600	37.879	60.317
7	VESA 800 × 600	48.077	72.188
8	VESA 800 × 600	46.875	75.000

Mode	Mode name and resolution	Horizontal frequency (kHz)	Vertical frequency (Hz)
9	VESA 1024 × 768	48.363	60.004
10	VESA 1024 × 768	56.476	70.069
11	VESA 1024 × 768	60.023	75.029
12	VESA 1280 × 1024	63.980	60.020
13	VESA 1280 × 1024	79.976	75.025

Power management

ENERGY STAR

As an ENERGY STAR® Partner, Gateway has determined that this product meets the ENERGY STAR guidelines for energy efficiency.

This monitor complies with the EPA's International ENERGY STAR Program, which is a program designed to encourage manufacturers of computer equipment to build circuitry into their products to reduce energy consumption during time of non-use.

Energy declaration

When connected to a computer that supports the VESA Display Power Management Signaling (DPMS) Protocol, the monitor can conserve significant energy by reducing power consumption during periods of non-use. When your computer goes into the energy saving mode, the monitor will then enter the Active Off mode (sleep). In the Active Off mode the Power LED will still show orange.

Use these conventions and the power can be reduced to the following levels:

VESA State	LED Indicator	Power Consumption
On	Blue	17-inch: 37 W 19-inch: 37 W
Active Off	Orange	2 W

To "wake" the monitor when it is in Active Off mode, move the mouse or press any keyboard key.

Access the power management options in the Control Panel to change the period of time after which the monitor enters these low power states.

Maintenance

To keep the monitor in optimal working order:

- Do not block the ventilation holes.
- Do not expose the monitor to rain or use near water.
- Keep the monitor away from radiators or heat vents.
- Keep the monitor out of direct sunlight.
- To clean the monitor, use a soft cloth slightly moistened with water only. Wipe the cabinet, screen, and controls.
- Storage specifications in this manual reflect design limitations, not recommended storage and humidity. We recommend that for extended periods of time (such as in the daily use environment), you store this monitor between 32~95°F (0-35°C) and humidity less than 70%.
- Make sure that the monitor is turned off before attaching the power and video cords.

 **Caution**

Do not use any type of abrasive pad or glass cleaner. You will permanently scratch the screen.

Troubleshooting

 **Important**

Make sure that the monitor has warmed up for approximately 30 minutes before making any judgments about the picture quality.

If you have problems with the monitor, the information in this troubleshooting section may help you solve them.

No power

Make sure that the power cord is connected correctly to both the back of the monitor and the wall outlet. For more information about connecting the power cord, see “Connecting the monitor” on page 2.

No picture

- Press the **Input** button to make sure that you have selected the correct video source.
- Make sure that the power cord is connected correctly to both the back of the monitor and the wall outlet. For more information about connecting the power cord, see "Connecting the monitor" on page 2.
- Make sure that the video cable is connected securely to the back of the monitor and computer. For more information about connecting the video cable, see "Connecting the monitor" on page 2.
- Make sure that the monitor is turned on.
- If the power LED is orange:
 - Make sure that your computer is turned on.
 - Move the mouse or press any key on the keyboard to bring the monitor out of sleep mode.
 - Restart your computer with the monitor turned on.
 - Make sure that the video cable is not damaged.
 - Check the end of the video cable for any pins that might be bent or pushed in.
- Turn off the monitor and unplug the video cable from the back of your computer. Turn the monitor back on and wait for ten seconds. If the monitor is functioning correctly, a "No Signal" message appears. For more information about connecting the video cable, see "Connecting the monitor" on page 2.

Monitor colors are wrong

- Press the **Auto** button to automatically adjust the monitor image to the ideal settings.
- Restart your computer with the monitor turned on.
- Make sure that the video cable is connected securely to the back of the monitor and your computer. For more information about connecting the video cable, see "Connecting the monitor" on page 2.
- Make sure that the video cable is not damaged.
- Check the end of the video cable for any pins that might be bent or pushed in.

Picture has shadows or "ghosts"

- Press the **Auto** button to automatically adjust the monitor image to the ideal settings.
- Remove any extension cables or switchboxes.
- Make sure that the video cable is connected securely to the back of the monitor and your computer. For more information about connecting the video cable, see "Connecting the monitor" on page 2.
- Make sure that the video cable is not damaged.
- Check the end of the video cable for any pins that might be bent or pushed in.

Color is not uniform

- Press the **Auto** button to automatically adjust the monitor image to the ideal settings.
- Make sure that the monitor warms up for at least 30 minutes before making a final judgment about color uniformity or brightness.

Image is not sized or centered correctly

- Press the **Auto** button to automatically adjust the monitor image to the ideal settings.
- Use the position controls to adjust the image. For instructions on how to adjust the monitor image position, see "Adjusting monitor settings" on page 9.

The monitor has pixels that are always dark or too bright

- This condition is normal and inherent in the TFT technology used in active-matrix LCD screens. Gateway's inspection standards keep these to a minimum. If you feel these pixels are unacceptably numerous or dense on your monitor, contact Gateway Customer Care to identify whether a repair or replacement is justified based on the number of pixels affected.

Specifications

Specifications are subject to change without notice or obligation. Many products for Gateway and its subsidiaries are custom engineered by our suppliers to Gateway specifications and may vary from similarly marketed products.

17-inch monitor

Panel size	17 inches (diagonal)
Panel type	17-inch viewable TFT with anti-glare coating
Pixel resolution	1280 × 1024 (native)
Pixel pitch	0.0104 × 0.0104 inches (0.264 mm × 0.264 mm)
Aspect ratio	5:4
Brightness and contrast ratio	280 cd/m ² , 1500:1
Frequencies	Horizontal: 31~81 KHz Vertical: 56~75 KHz
Viewing angles	178° horizontal, 178° vertical
Response time	25 ms
Lamp type/life	50,000 hours
Colors	16.7 million Color temperature: 6500K
OSD languages	English, French, Spanish, Italian, Japanese
Connections and inputs	Analog (VGA): 15-pin mini d-sub VGA Digital (DVI-D): 24-pin DVI-D AC power input
Cables	15-pin mini d-sub analog VGA (included) 24-pin DVI-D (not included)
Power consumption	Normal operation: 37 W Off (power-save): 2 W
Power input	100-240 VAC, 50/60 Hz
Power management	Energy Star®
Certifications	UL, cUL, FCC Class B, NOM, CE, TUV/GS. VCCI and TCO'99 where applicable.
Wall mount bracket	VESA 4 × 3.937 inches (4 × 100 mm)
Dimensions	14.96 × 14.79~19.91 × 8.72 inches (38.02 × 37.57~50.57 × 22.15 cm) with stand
Weight	12.24 lbs. (5.55 kg)
Temperature	Operating: 41~95°F (5~35°C) Non-operating: -4~149°F (-20~65°C)
Humidity	Operating: 65±20% RH Non-operating: 10~95% RH
Altitude	Operating: 10,000 ft (3,048 m) Non-operating: 40,000 ft (12,192 m)

19-inch monitor

Panel size	19 inches (diagonal)
Panel type	19-inch viewable TFT with anti-glare coating
Pixel resolution	1280 × 1024 (native)
Pixel pitch	0.0116 × 0.0116 inches (0.294 mm × 0.294 mm)
Aspect ratio	5:4
Brightness and contrast ratio	280 cd/m ² , 1000:1
Frequencies	Horizontal: 31~81 KHz Vertical: 56~75 KHz
Viewing angles	178° horizontal, 178° vertical
Response time	8 ms
Lamp type/life	50,000 hours
Colors	16.7 million Color temperature: 6500K
OSD languages	English, French, Spanish, Italian, Japanese
Connections and inputs	Analog (VGA): 15-pin mini d-sub VGA Digital (DVI-D): 24-pin DVI-D AC Power input
Cables	15-pin mini d-sub analog VGA (included) 24-pin DVI-D (not included)
Power consumption	Normal operation: 37 W Off (power-save): 2 W
Power input	100-240 VAC, 50/60 Hz
Power management	Energy Star®
Certifications	UL, cUL, FCC Class B, NOM, CE, TUV/GS. VCCI and TCO'99 where applicable.
Wall mount bracket	VESA 4 × 3.937 inches (4 × 100 mm)
Dimensions	16.8 × 16.18~21.30 × 8.72 inches (42.66 × 41.10~54.10 × 22 cm) with stand
Weight	14.88 lbs. (6.75 kg)
Temperature	Operating: 41~95°F (5~35°C) Non-operating: -4~149°F (-20~65°C)
Humidity	Operating: 65±20% RH Non-operating: 5~90% RH
Altitude	Operating: 10,000 ft (3,048 m) Non-operating: 40,000 ft (12,192 m)

Safety, Regulatory, and Legal Information

- Important safety information
- Environmental information
- Regulatory compliance statements
- Notices

Important safety information

Warning

Always follow these instructions to help guard against personal injury and damage to your Gateway product.

Your Gateway product is designed and tested to meet the latest standards for safety of information technology equipment. However, to ensure safe use of this product, it is important that the safety instructions marked on the product and in the documentation are followed.

Setting up your system

- Read and follow all instructions marked on the product and in the documentation before you operate your system. Retain all safety and operating instructions for future use.
- Do not use this product near water or a heat source such as a radiator.
- Set up the system on a stable work surface.
- The product should only be operated from the type of power source indicated on the rating label.
- If your product has a voltage selector switch, make sure that the switch is in the proper position for your area. The voltage selector switch is set at the factory to the correct voltage.
- Openings in the monitor case are provided for ventilation. Do not block or cover these openings. Make sure you provide adequate space, at least 6 inches (15 cm), around the system for ventilation when you set up your work area. Never insert objects of any kind into the monitor ventilation openings.
- Some products are equipped with a three-wire power cord to make sure that the product is properly grounded when in use. The plug on this cord will only fit into a grounding-type outlet. This is a safety feature. If you are unable to insert the plug into an outlet, contact an electrician to install the appropriate outlet.
- If you use an extension cord with this system, make sure that the total ampere rating on the products plugged into the extension cord does not exceed the extension cord ampere rating.
- If your system is fitted with a TV Tuner, cable, or satellite receiver card, make sure that the antenna or cable system is electrically grounded to provide some protection against voltage surges and buildup of static charges.

Warning

To prevent electric shock, never remove the cover. No user serviceable parts inside. Refer servicing to qualified service personnel.

Care during use

- Do not walk on the power cord or allow anything to rest on it.
- Do not spill anything on the system. The best way to avoid spills is to avoid eating and drinking near your system.
- Do not expose the monitor to rain or use near water. If the monitor does get exposed to moisture, unplug it and allow it to dry for 24 hours. Call Gateway Customer Care for advice on whether the monitor is safe to turn back on.
- When the monitor is turned off, a small amount of electrical current still flows through the monitor. To avoid electrical shock, always unplug all power cables and modem cables from the wall outlets before cleaning the system.
- Unplug the system from the wall outlet and refer servicing to qualified personnel if:
 - The power cord or plug is damaged.
 - Liquid has been spilled into the system.
 - The system does not operate properly when the operating instructions are followed.
 - The system was dropped or the cabinet is damaged.
 - The system performance changes.

Warning



Do not use Gateway products in areas classified as hazardous locations. Such areas include patient care areas of medical and dental facilities, oxygen-laden environments, or industrial facilities.

Replacement parts and accessories

Use only replacement parts and accessories recommended by Gateway.

Environmental information

Recycling

 **Mercury Warning** 
Lamp(s) inside this product contain mercury and must be recycled or disposed of according to local, state, or federal laws.

The product you have purchased contains extracted natural resources that have been used in the manufacturing process. This product may contain substances known to be hazardous to the environment or to human health.

To prevent releases of harmful substances into the environment and to maximize the use of our natural resources, Gateway provides the following information on how you can responsibly recycle or reuse most of the materials in your "end of life" product.

Waste Electrical and Electronic Equipment (commonly known as WEEE) should never be disposed of in the municipal waste stream (residential garbage collection). The "Crossed-Out Waste Bin" label affixed to this product is your reminder to dispose of your "end of life" product properly.



Substances such as glass, plastics, and certain chemical compounds are highly recoverable, recyclable, and reusable. You can do your part for the environment by following these simple steps:

- When your electrical or electronic equipment is no longer useful to you, "take it back" to your local or regional waste collection administration for recycling.
- In some cases, your "end of life" product may be "traded in" for credit towards the purchase of new Gateway equipment. Call Gateway to see if this program is available in your area.
- If you need further assistance in recycling, reusing, or trading in your "end of life" product, you may contact us at the Customer Care number listed in your product's user guide and we will be glad to help you with your effort.

Finally, we suggest that you practice other environmentally friendly actions by understanding and using the energy-saving features of this product (where applicable), recycling the inner and outer packaging (including shipping containers) this product was delivered in, and by disposing of or recycling used batteries properly.

With your help, we can reduce the amount of natural resources needed to produce electrical and electronic equipment, minimize the use of landfills for the disposal of "end of life" products, and generally improve our quality of life by ensuring that potentially hazardous substances are not released into the environment and are disposed of properly.

EPA ENERGY STAR



As an ENERGY STAR® Partner, Gateway has determined that this product meets the ENERGY STAR guidelines for energy efficiency when used with a computer equipped with a Display Power Management System.

Regulatory compliance statements

United States of America

Federal Communications Commission (FCC) Unintentional emitter per FCC Part 15

This device has been tested and found to comply with the limits for a Class B digital device, pursuant to Part 15 of the FCC rules. These limits are designed to provide reasonable protection against harmful interference in a residential installation. This equipment generates, uses, and can radiate radio frequency energy and, if not installed and used in accordance with the instructions, may cause harmful interference to radio or television reception. However, there is no guarantee that interference will not occur in a particular installation. If this equipment does cause interference to radio and television reception, which can be determined by turning the equipment off and on, the user is encouraged to try to correct the interference by one or more of the following measures:

- Reorient or relocate the receiving antenna
- Increase the separation between the equipment and receiver
- Connect the equipment to an outlet on a different circuit from that to which the receiver is connected
- Consult the dealer or an experienced radio/TV technician for help.

Compliance Accessories: The accessories associated with this equipment are: shielded video cable. These accessories are required to be used in order to ensure compliance with FCC rules.

FCC declaration of conformity

Responsible party:

Gateway, Inc.
7565 Irvine Center Drive
Irvine, CA 92618 USA

This device complies with Part 15 of the FCC Rules. Operation of this device is subject to the following two conditions: (1) this device may not cause harmful interference, and (2) this device must accept any interference received, including interference that may cause undesired operation.



Caution

Changes or modifications not expressly approved by Gateway could void the FCC compliance and negate your authority to operate the product.



California Proposition 65 Warning

This product contains chemicals, including lead, known to the State of California to cause cancer, birth defects or reproductive harm.

Canada

Industry Canada (IC) Unintentional emitter per ICES-003

This digital apparatus does not exceed the Class B limits for radio noise emissions from digital apparatus as set out in the radio interference regulations of Industry Canada.

Le présent appareil numérique n'émet pas de bruits radioélectriques dépassant les limites applicables aux appareils numériques de Classe B prescrites dans le règlement sur le brouillage radioélectrique édicté par Industrie Canada.

Notices

© 2006 Gateway, Inc.
All rights reserved.

Gateway, Inc.
7565 Irvine Center Drive
Irvine, CA 92618 USA
All Rights Reserved

This publication is protected by copyright and all rights are reserved. No part of it may be reproduced or transmitted by any means or in any form, without prior consent in writing from Gateway.

The information in this manual has been carefully checked and is believed to be accurate. However, changes are made periodically. These changes are incorporated in newer publication editions. Gateway may improve and/or change products described in this publication at any time. Due to continuing system improvements, Gateway is not responsible for inaccurate information which may appear in this manual. For the latest product updates, consult the Gateway Web site at www.gateway.com. In no event will Gateway be liable for direct, indirect, special, exemplary, incidental, or consequential damages resulting from any defect or omission in this manual, even if advised of the possibility of such damages.

In the interest of continued product development, Gateway reserves the right to make improvements in this manual and the products it describes at any time, without notices or obligation.

Trademark Acknowledgments

Gateway and eMachines are trademarks or registered trademarks of Gateway, Inc. in the United States and other countries. All other brands and product names are trademarks or registered trademarks of their respective companies.



MAN FPD1785/1985 USR GDE R0 4/06



Free Manuals Download Website

<http://myh66.com>

<http://usermanuals.us>

<http://www.somanuals.com>

<http://www.4manuals.cc>

<http://www.manual-lib.com>

<http://www.404manual.com>

<http://www.luxmanual.com>

<http://aubethermostatmanual.com>

Golf course search by state

<http://golfingnear.com>

Email search by domain

<http://emailbydomain.com>

Auto manuals search

<http://auto.somanuals.com>

TV manuals search

<http://tv.somanuals.com>