



BLENDER

Model number: 169119

UPC: 681131691192

Customer Assistance

1-877-207-0923 (US)

1-877-556-0973 (Canada)



Thank you for purchasing a GE small appliance.

In keeping with the GE ecomagination initiative, please consider the option to recycle the packaging material and donate the appliance you are no longer using.

To read about GE's ecomagination commitment, visit
<http://ge.ecomagination.com>

IMPORTANT SAFEGUARDS

When using electrical appliances, basic safety precautions should always be followed, including the following:

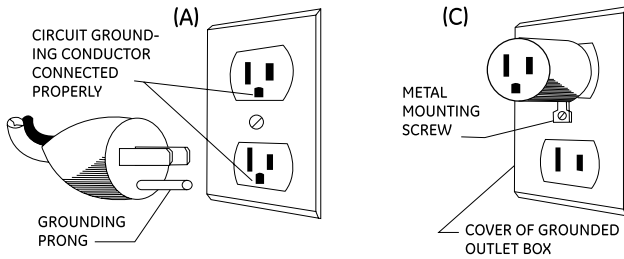
- **READ ALL INSTRUCTIONS.**
- To protect against risk of electrical shock do not immerse power cord or blender base in water or other liquid.
- Close supervision is necessary when any appliance is used by or near children.
- Unplug from outlet when not in use, before putting on or taking off parts, and before cleaning.
- Avoid contacting moving parts.
- Do not operate any appliance with a damaged cord or plug or after the appliance malfunctions, or is dropped or damaged in any manner. Call our toll-free customer service number for information on examination, repair, or adjustment.
- The use of attachments, including canning jars, not recommended by the manufacturer may cause a risk of injury to persons.
- Do not use outdoors.
- Do not let cord hang over edge of table or counter or touch hot surfaces.
- Keep hands and utensils out of container while blending to reduce the risk of severe injury to persons or damage to the blender. A scraper may be used but must be used only when the blender is not running.
- Blades are sharp. Handle carefully.
- To reduce the risk of injury, never place cutter-assembly blades on base without jar properly attached.
- Always operate blender with cover in place.
- When blending hot liquids, remove center piece of two-piece cover.
- Do not place on or near hot gas or electric burner or in a heated oven
- To disconnect, turn the control to off then remove plug from wall outlet
- Do not use appliance for other than intended use.

SAVE THESE INSTRUCTIONS!

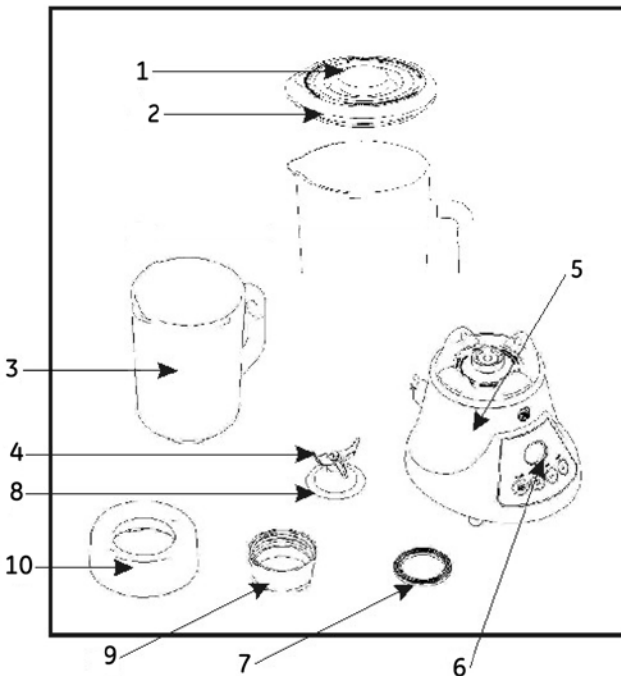
This appliance has a 3-prong grounding type plug to reduce the risk of electric shock. If the power-supply cord is a grounding-type 3-wire cord with a grounding prong on the plug, the extension cord should also be a grounding-type 3-wire cord.

Grounding Instructions

This appliance must be grounded while in use to protect the operator from electrical shock. The appliance is equipped with a 3-conductor cord and a 3-prong grounding-type plug to fit the proper grounding-type receptacle.



PARTS



1. Measuring cup
2. Lid
3. Glass jar
4. Blade
5. Base
6. Control Panel
7. Sealing Ring
8. Blade base
9. Blade locking ring
10. Stainless jar collar

OPERATING INSTRUCTIONS

The blender can be used for pureeing and for blending. If necessary, cut solid ingredients into smaller pieces before you put them in the blender.

For your safety, always read and understand this instruction Manual before attempting to use any electric appliance.

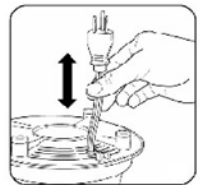
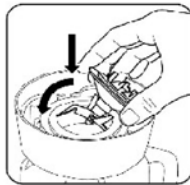
Before Using:

1. Carefully unpack the blender. Remove all packaging materials.
2. Wash the lid, measuring cap, blade assembly, and glass jar in hot soapy water. Dry thoroughly.
3. Wipe exterior surfaces of the base with a soft, moist cloth to remove residue that may have collected during packing and handling. Dry thoroughly. Do not use abrasive cleaners. NEVER IMMERS THE BLENDER, CORD OR PLUG IN WATER OR ANY OTHER LIQUID.

Blade Assembly:

1. Line up the two round indentions on the metal jar collar with the two round bumps on the glass blending jar.
2. Place the silicone sealing ring on the bottom of the glass jar.
3. Angle the blade assembly so one of the taller blades goes into the glass jar. Slowly lower the blade assembly so that the other blades enter the glass jar and the blade assembly sits flat on top of the silicone sealing ring.
4. Place the black locking ring around the blade assembly and rotate the black locking ring clockwise until it is tightened.

Note: If you notice liquid leaking from the bottom of the glass blending jar, remove the black locking ring and re-tighten it.



This blender is equipped with cord storage located on the bottom of the appliance.

Blending:

1. Add ingredients to the blending jar.
2. Place lid on blending jar. Make sure the metal jar collar is properly seated on the die cast base.
3. Plug the power cord into a wall outlet. The LCD will read power "ON" indicating the blender is ready for operation.
4. To stop blending, Press the "STOP" button

Tips:

1. The opening in the lid can be used to add ingredients. To do so, remove the measuring cap from the lid.
2. It may be necessary to switch off the appliance from time to time to remove pieces of food stick to the inside of the blender jar.
 - Switch off the appliance and unplug it.
 - Remove the lid.
 - Remove pieces sticking to the inside of the glass with a soft spatula.

Keep the spatula at a distance from the blade.

3. When finished blending, unplug the appliance and remove the glass jar.

CLEANING AND STORAGE

To Clean:

1. Before cleaning, be sure the cord is unplugged from the outlet.
2. To make cleaning easier, rinse the center measuring cup and jar lid immediately after use. Do not immerse the base in water or any liquid. If washing the jar by hand, wash in warm soapy water. Rinse and dry thoroughly. If necessary, use a nylon bristle brush to clean the glass jar.
3. Do not use scouring pads or harsh chemicals on any plastic or metal parts.
4. Do not fill the jar with boiling water. Do not place any parts in boiling water.
5. Remove the cast metal jar collar off the glass blending jar.

The glass jar is dishwasher safe. It is recommended to clean all other parts of the blade assembly by hand with warm, soapy water and dry with a towel or allow to air dry. Use caution when washing and cleaning the blade assembly as the blades are sharp.

To Store:

Be sure all parts are clean and dry before storing. Store appliance in its box or in a clean, dry place. Never wrap cord tightly around the appliance; keep it loosely coiled or use the cord storage on the bottom of the blender.

CUSTOMER ASSISTANCE

For faster service, please have the model number and product name ready for the operator to assist you. This number can be found on the bottom of your appliance and on the front page of this manual.

Model Number: _____ **Product Name:** _____

Customer Assistance Number 1-877-207-0923 (U.S.) or 1-877-556-0973 (Canada)

Keep these numbers for future reference!

For more information, please visit us at www.gehousewares.com

TWO-YEAR LIMITED WARRANTY

What does your warranty cover?

- Any defect in material or workmanship.

For how long after the original purchase?

- Two years.

What will we do?

- Provide you with a new one.
- For those items still under warranty but no longer available, WAL-MART reserves the right to replace with a similar GE branded product of equal or greater value.

How do you make a warranty claim?

- Save your receipt.
- Properly pack your unit. We recommend using the original carton and packing materials.
- Return the product to your nearest WAL-MART store or call Customer Assistance at 1-877-207-0923 (U.S.) or 1-877-556-0973 (Canada).

What does your warranty not cover?

- Parts subject to wear, including, without limitation, glass parts, glass containers, cutter/strainer, blades, seals, gaskets, clutches, motor brushes, and/or agitators, etc.
- Commercial use or any other use not found in printed directions.
- Damage from misuse, abuse, or neglect, including failure to clean product regularly in accordance with manufacturer's instructions.

How does state law relate to this warranty?

- This warranty gives you specific legal rights, and you may also have other rights which vary from state to state or province to province.
- This warranty is in lieu of any other warranty or condition, whether express or implied, written or oral, including, without limitation, any statutory warranty or condition of merchantability or fitness for a particular purpose.
- WAL-MART, GE and the product manufacturer expressly disclaim all responsibility for special, incidental and consequential damages or losses caused by use of this appliance. Any liability is expressly limited to an amount equal to the purchase price paid whether a claim, however instituted, is based on contract, indemnity, warranty, tort (including negligence), strict liability, or otherwise. Some states or provinces do not allow this exclusion or limitation of incidental or consequential losses so the foregoing disclaimer may not apply to you.

What if you encounter a problem with this product while using it outside the country of purchase?

- The warranty is valid only in the country of purchase and you follow the warranty claim procedure as noted.



is a trademark of General Electric Company and is used under the license by Wal-Mart Stores Inc., Bentonville, AR 72716

Marketed in Canada by:

Wal-Mart Canada Corp.
1940 Argentia Road, Mississauga, Ontario L5N1P9

Free Manuals Download Website

<http://myh66.com>

<http://usermanuals.us>

<http://www.somanuals.com>

<http://www.4manuals.cc>

<http://www.manual-lib.com>

<http://www.404manual.com>

<http://www.luxmanual.com>

<http://aubethermostatmanual.com>

Golf course search by state

<http://golfingnear.com>

Email search by domain

<http://emailbydomain.com>

Auto manuals search

<http://auto.somanuals.com>

TV manuals search

<http://tv.somanuals.com>