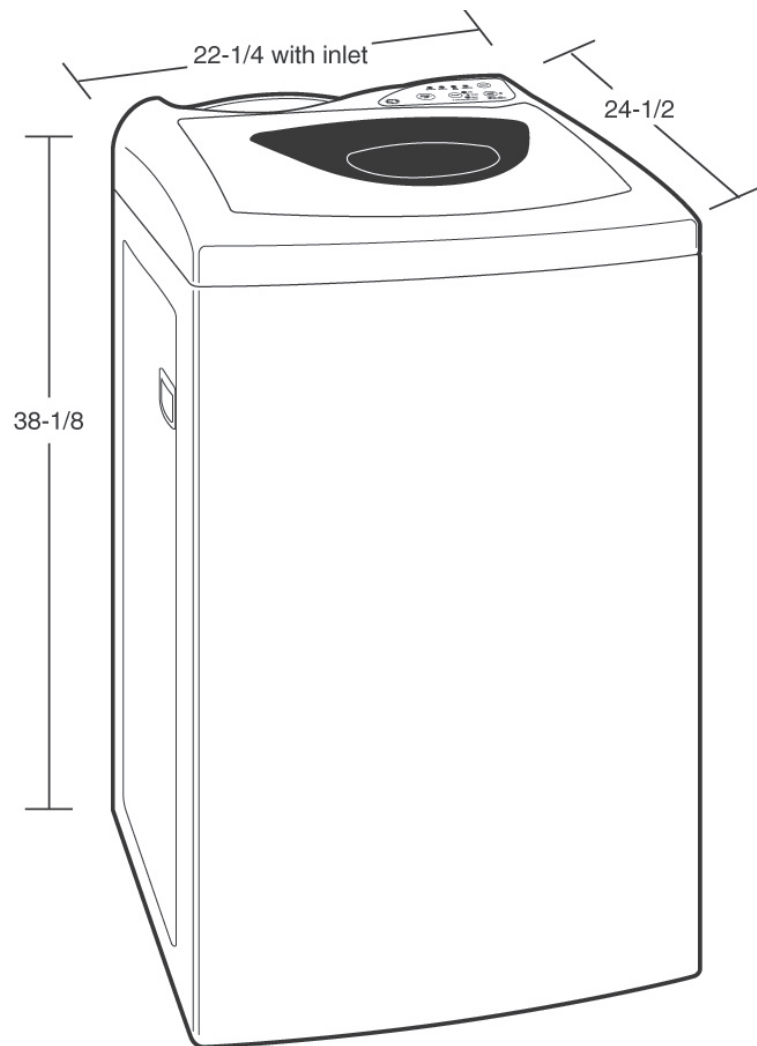




GE Appliances

WSKS3040E – GE Spacemaker® 2.1 Cu. Ft. Stationary Washer with Stainless Steel Basket



Washer Note: Washer wall outlet must be located within 36" of service cord entry. Wall outlet must not be located behind dryer.



For answers to your Monogram®, GE Profile™ or GE® appliance questions, visit our website at ge.com or call GE Answer Center® service, 800.626.2000.

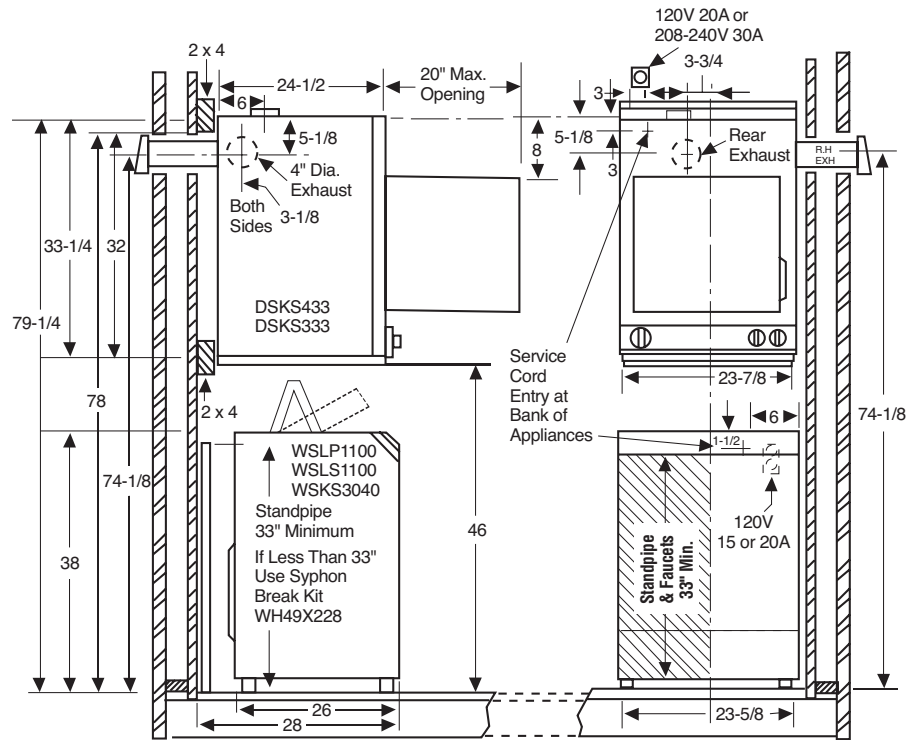
Specification Created 10/04
360440



GE Appliances

WSKS3040E – GE Spacemaker® 2.1 Cu. Ft. Stationary Washer with Stainless Steel Basket

WMK-35 Wall Kit Installation



General Information:

The back of the dryer is not accessible for service or maintenance after dryer mounting installation is complete. It is recommended that the dryer be checked and electrical installation completed prior to mounting. For service or maintenance requiring rear access, the dryer must be removed from the wall.

CAUTION: DISCONNECT ELECTRICAL CURRENT BEFORE INSTALLING OR SERVICING DRYER.

The electrical outlet must be located above the dryer, or beside the dryer if adequate dryer-to-wall clearance is available. The outlet must be within three feet on a 240 volt dryer or a 120 volt dryer from the service cord entry on the rear of the dryer.

Specification Created 10/04

360440

Dryer Mounting Position

These instructions explain two mounting positions for your 24 inch dryer.

Installation Procedure:

1. Obtain two pieces of 2x4 long enough to span at least two wall studs and the width of the dryer.
2. Locate wall stud center lines. Mark wall stud center lines on two pieces of 2x4 in relationship to position dryer is to be mounted.
3. Referring to dimensional drawing, draw a horizontal reference line (73") from the floor to locate upper 2x4 support.
4. Position, level and secure upper 2x4 with four 1/4 x 3 inch wood screws. The bottom of the 2x4 should be positioned on reference line.
5. Referring to dimensional drawing, draw a horizontal reference line 32" down from the bottom of the upper 2x4 support.
6. Position, level and secure lower 2x4 with two 1/4 x 3 inch wood screws. The center line of the 2x4 should be positioned on reference line.
7. Referring to figure 1, mount the metal wall bracket 1/8 inch from the bottom of the upper 2x4 support with five 1-1/2 inch wood screws.
8. Referring to figure 2, remove one screw from each lower rear corner of dryer and, using same screws, secure lower brackets (supplied) as shown.
9. Dryer is supplied with exhaust at the top, locate and install outside exhaust duct referring to the dimensional drawing. For other optional exhaust directions as shown in dimensional drawing (rear and sides) refer to dryer installation instruction sheet.
10. Position the dryer on the wall mounting bracket and check that the dryer is plumbed.
11. If the dryer needs plumbing, use some of the twelve washers supplied with the kit as spacers behind lower brackets of figure 2 and secure the dryer to the lower 2x4 support using the remaining 1-1/2 inch wood screws.

WALL BRACKET

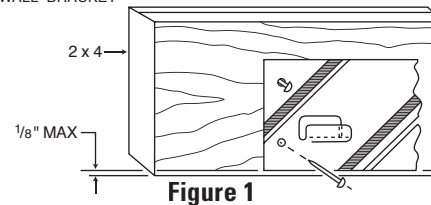


Figure 1

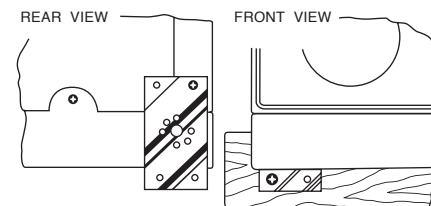


Figure 2

This kit consists of the following:

- 1 Wall mounting bracket
- 2 Bottom Brackets
- 6-1/4 x 3 inch wood screws
- 7-1/4 x 1-1/2 inch wood screws
- 12 washers

Dryer Requirements

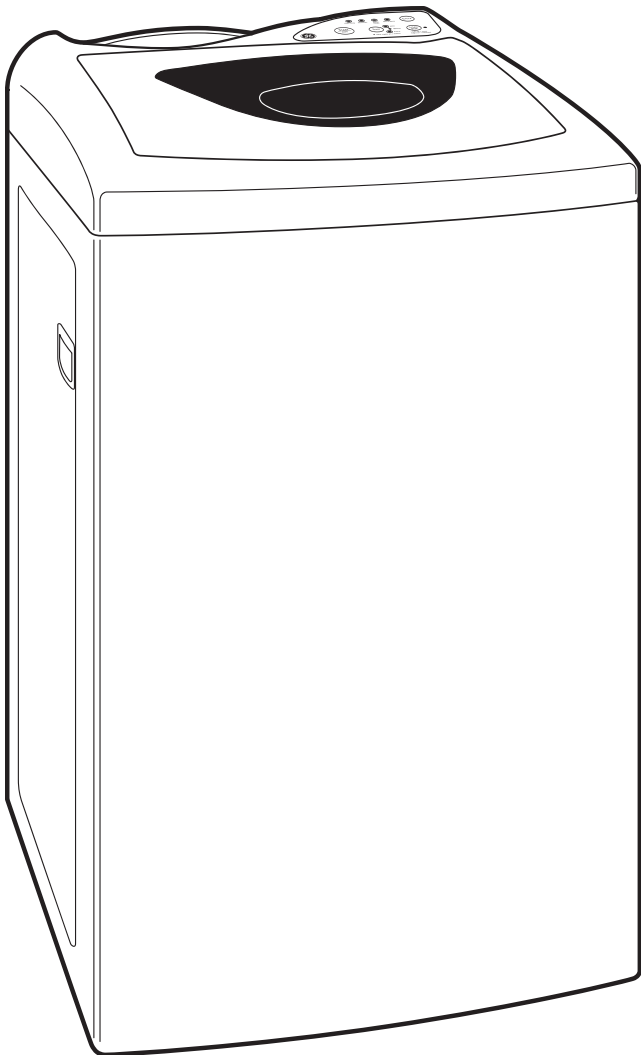
Carefully read and follow individual dryer installation instructions for exhausting requirements.

CAUTION
The 120 volt receptacle on the back of the 240 volt dryer must not be used with this wall mount kit.



GE Appliances

WSKS3040E – GE Spacemaker® 2.1 Cu. Ft. Stationary Washer with Stainless Steel Basket



Features and Benefits

- Pushbutton controls with cycle status lights – Makes it easy to select and monitor your wash cycles
- Three wash/spin speed combinations – Alternate between high, medium and low speeds for better clothes care
- Four wash cycles – Offer convenient, preprogrammed settings for color cottons, permanent press, white cottons and delicates
- Bleach Dispenser – Automatically mixes bleach with wash water for proper bleaching action
- Fabric Softener Dispenser – Automatically releases liquid softener at just the right time
- Detergent Dispenser – Water flows through the detergent dispenser at the start of the wash cycle which ensures even mixing of detergent and water for less residue on clothes
- Two water levels – Adjust water to fit the load
- Three wash/rinse temperatures – Offer better wash results and longer fabric life
- Quiet-By-Design™ – Engineered for quiet operation
- DSDR24D – Metal rack allows a dryer to be stacked above the washer
- Model WSKS3040EWW – White on white

Specification Created 10/04

360440

Free Manuals Download Website

<http://myh66.com>

<http://usermanuals.us>

<http://www.somanuals.com>

<http://www.4manuals.cc>

<http://www.manual-lib.com>

<http://www.404manual.com>

<http://www.luxmanual.com>

<http://aubethermostatmanual.com>

Golf course search by state

<http://golfingnear.com>

Email search by domain

<http://emailbydomain.com>

Auto manuals search

<http://auto.somanuals.com>

TV manuals search

<http://tv.somanuals.com>