

ELECTRIC SKILLET



Model Number:
169216
UPC: 681131692168

Customer Assistance

1 877 207 0923 (US)
1 877 556 0973 (Canada)



Thank you for purchasing this GE appliance.

In keeping with the GE ecomagination initiative, please consider the option to recycle the packaging material and donate any appliance you are no longer using.

To read more about GE's ecomagination commitment, visit:
ge.ecomagination.com

IMPORTANT SAFEGUARDS

When using electrical appliances, basic safety precautions should always be followed, including the following:

- **Read all instructions.**
- Check that the voltage on the appliance rating plate corresponds to the voltage of your mains supply. Only connect the appliance to a grounded wall outlet which complies with electrical standards.
- Do not touch hot surfaces. Always use knobs or handles. Danger of burns!
- To protect against electrical shock, do not immerse temperature controller, cord or plugs in water or other liquid.
- Close supervision is necessary when any appliance is used near children. This appliance is not to be used by children.
- Unplug from outlet when not in use and before cleaning. Allow to cool before putting on or taking off parts, and before cleaning.
- Do not operate any appliance with a damaged cord or plug or after the appliance malfunctions or has been damaged in any manner. Call Customer Service (see warranty) to return for examination, repair, or adjustment.
- Do not let cord hang over edge of table or counter, or touch heated surfaces.
- Do not abuse the cord. Never use the cord for carrying, pulling or unplugging the appliance.
- The use of accessories not recommended by manufacturer may cause injuries.
- Do not use outdoors or in a damp area.
- Do not place on or near a hot gas or electric burner, or in a heated oven.
- Keep at least four inches of free space around the appliance during operation for adequate ventilation.
- Do not cover the appliance or let it touch flammable materials like curtains, draperies, walls or alike during operation. This can create a risk of fire.
- Do not move the appliance while in use.
- Extreme caution must be used when moving any appliance containing hot oil or other hot liquids.
- Always attach temperature controller to appliance first, then plug cord in the wall outlet. To disconnect, push the power button, allow appliance and temperature controller to cool, then remove plug from wall.
- Do not use appliance for other than intended use.
- The manufacturer does not accept responsibility for any damages due to commercial use, inappropriate use or failure to comply with the instructions. This will void the warranty.

SAVE THESE INSTRUCTIONS!

ADDITIONAL SAFEGUARDS

This appliance is for **HOUSEHOLD USE ONLY**.

DO NOT OPERATE APPLIANCE IF THE LINE CORD SHOWS ANY DAMAGE OR IF APPLIANCE WORKS INTERMITTENTLY OR STOPS WORKING ENTIRELY.

EXTENSION CORDS

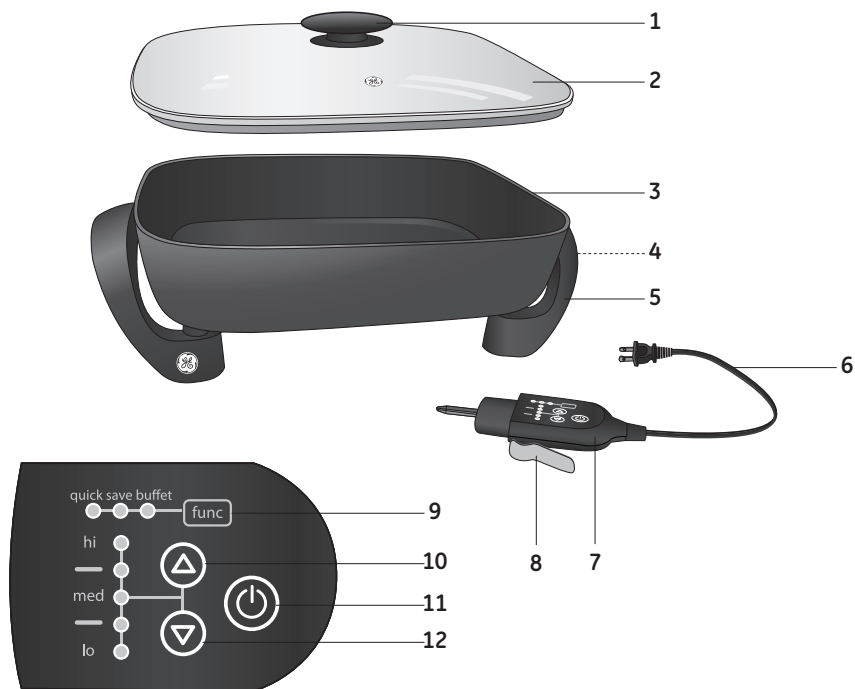
A short power-supply cord is to be provided to reduce the risk resulting from becoming entangled in or tripping over a longer cord. Longer detachable power-supply cords or extension cords are available and may be used if care is exercised in their use. If a longer detachable power-supply cord or extension cord is used,

- 1) The marked electrical rating of the cord set or extension cord should be at least as great as the electrical rating of the appliance, and
- 2) The longer cord should be arranged so that it will not drape over the countertop or tabletop where it can be tripped over, snagged, or pulled on unintentionally (especially by children).

POLARIZED PLUG

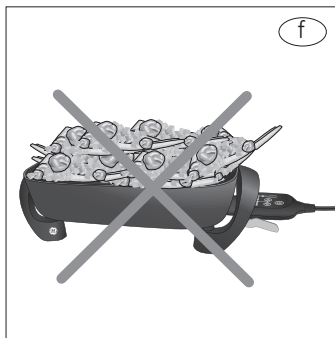
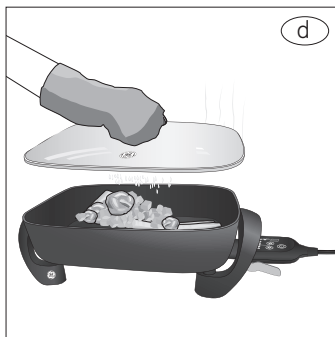
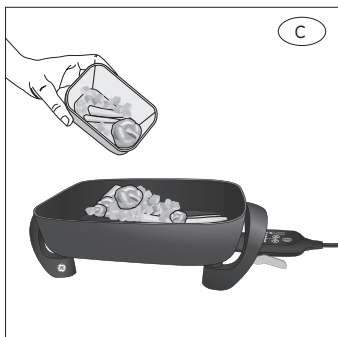
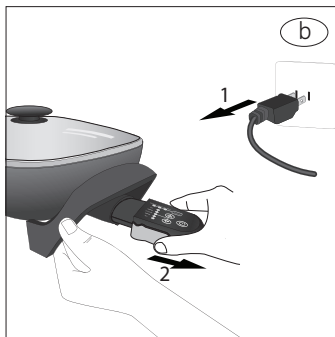
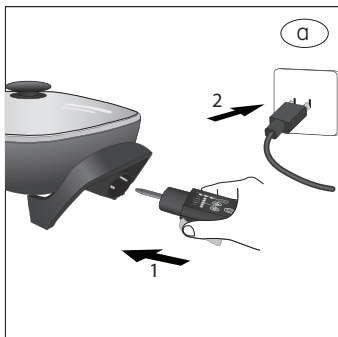
This appliance has a polarized plug (one blade is wider than the other). To reduce the risk of electric shock, this plug is intended to fit into a polarized outlet only one way. If plug does not fit fully into the outlet, reverse the plug. If it still does not fit, contact a qualified electrician. Do not attempt to modify the plug in any way.

PARTS



- | | | | |
|---|-----------------------------------|----|-------------------------|
| 1 | Lid handle | 9 | func button |
| 2 | Glass lid | 10 | Arrow button Δ |
| 3 | Skillet | 11 | Power button ⏻ |
| 4 | Temperature controller receptacle | 12 | Arrow button ∇ |
| 5 | Handles/Legs | | |
| 6 | Power cord with power plug | | |
| 7 | Temperature controller | | |
| 8 | Temperature controller lever | | |

ILLUSTRATIONS



OPERATION

Before first use

- Remove all packaging materials, labels and/or stickers from the skillet.
- Clean the skillet thoroughly before using for the first time (→ Cleaning). The skillet must not be connected to a wall outlet during cleaning.



Warning!

Do not immerse the temperature controller (7) in water or any other liquids. This may cause electric shock or damage the appliance.

- Immerse the skillet (3) and the glass lid (2) in warm, soapy water and wash with a soft cloth.
- Rinse well and dry all parts thoroughly.
- Place the skillet on a heat resistant work-surface.

NOTE: Do not use steel wool, abrasive cleaners, or metal scouring pads on cooking surfaces as this will damage the non-stick coating.

- Lightly brush cooking surface with vegetable oil. Heat, uncovered, to 300°F. Turn off and cool completely. Wipe away excess oil.

Operating instructions



Warning!

Do not leave the skillet unattended during operation.





Warning!

Never touch hot surfaces during operation to avoid risk of injury or burns. Only touch the lid handle (1) or the buttons on the temperature controller (7).



- Before plugging in the skillet, check that the electrical circuit is not overloaded with other appliances.
- Place the prepared food into the skillet (3) (ill. (C)).
- Do not fill the skillet (3) to the rim (ill. (F)).
- Cover the skillet (3) with the glass lid (2).
- Plug the temperature controller (7) securely into the temperature controller receptacle (4) at one side of the skillet (ill. (A)).
- Ensure the temperature controller lever (8) snaps into place.
- Connect the power plug (6) to a suitable outlet (120V AC) (ill. (A)).
- Preheat the skillet with the lid on for 5 minutes or until the indicator light turns solid.

OPERATION

Turning On and Off

- To turn the skillet on, push the power button  (11). The unit automatically switches to **lo** (185°F).
- To turn the skillet off, push the power button  (11) again.


Select the cooking temperature

- For selecting the desired cooking temperature, push the arrow buttons  (10) or  (12). The selected temperature will be indicated with a flashing LED. The following temperature settings are available:

Temperature controller LED	Temperature
hi	415°F
med hi	375°F
med	300°F
med low	225°F
lo	185°F

Preset functions

For easy and convenient cooking the skillet is equipped with 3 preset functions.

- Select the desired cooking temperature ( Select the cooking temperature).
- Select the desired preset function by pushing the **func** button (9) repeatedly. After selection, the corresponding LED will flash for about 3 seconds and then turn solid. The following functions are available:

Function LED	Function	Description
quick	Quick Heat	From normal temperature setting: Heat the product to maximum temperature for 7 minutes and return to the selected temperature. From save mode: Heat the product to maximum temperature for 8 minutes and return to low temperature. From buffet mode: Quick function does not operate.
save	Conserve	Maintain the temperature indefinitely at 165°F to conserve or keep cooked food warm.
buffet	Buffet	Maintain the temperature indefinitely at 195°F to use as a buffet server and keep food hot without cooking it.

OPERATION

- To exit a preset function, push the arrow button **▲ (10)** or **▼ (12)**. The temperature will switch to the lowest setting.



Warning!

Always use extreme care when opening the glass lid **(2)**. Always use heat resistant gloves.

CAUTION: When lifting the glass lid **(2)** hot steam may cause serious injuries. Always lift the glass lid so that the steam is diverted away from you. Let the condensed hot water drip into the pot (*ill. (d)*).

- After cooking, first disconnect the power plug **(6)** from the outlet (*ill. (b)*).
- Then take out the temperature controller **(7)** from the temperature controller receptacle **(4)** (*ill. (b)*) by pressing the temperature controller lever **(8)**.
- Let the appliance cool down completely.

HELPFUL HINTS

- Use only nylon or heat-proof plastic cooking utensils. Metal utensils may scratch the non-stick surface.
- This skillet is not designed to deep fry. To pan-fry, do not use more than 1 cup of oil. Select a vegetable oil or peanut oil for frying. Butter and olive oil should only be used to saute foods on a lower temperature setting.

CLEANING



Warning!

Always unplug the power plug (6) from the wall outlet and allow the skillet to cool down before cleaning.

- Remove the temperature controller (7) from the temperature controller receptacle (4) by pressing the temperature controller lever (8). Wipe the controller clean with a dry towel (*ill.* e).
- Immerse the skillet and lid in warm, soapy water and wash with a soft cloth.
- Rinse well and dry. All parts, except the temperature controller (7) and the power cord with power plug (6), are fully immersible and dishwasher-safe.

NOTE: Do not use steel wool, abrasive cleaners, or metal scouring pads on cooking surfaces as this will damage the non-stick coating.

Storage

- Clean and dry all parts before storing.
- Store the skillet in its original packaging or in a clean, dry place.

TECHNICAL DATA

Rated voltage:	120V ~ , 60Hz
Rated current:	12.5A
Rated power output:	1500W
Capacity:	Max. 6 liters
Dimensions:	582 x 310 x 216mm
Weight:	About 3400g (without package)

CUSTOMER ASSISTANCE

If you have a claim under this warranty, please call our Customer Assistance Number. For faster service, please have the model number and product name ready for the operator to assist you. This number can be found on the bottom of your appliance and on the front page of this manual.

Model Number: _____ **Product Name:** _____

Customer Assistance Number 1.877.207.0923 (U.S.) or 1.877.556.0973 (Canada).

Keep these numbers for future reference!

For more information, please visit us at WWW.GEHOUSEWARES.COM

Two-year limited warranty

What does your warranty cover?

- Any defect in material or workmanship.

For how long after the original purchase?

- Two years.

What will we do?

- Provide you with a new one.
- For those items still under warranty but no longer available, WAL-MART reserves the right to replace with a similar GE branded product of equal or greater value.

How do you make a warranty claim?

- Save your receipt.
- Properly pack your unit. We recommend using the original carton and packing materials.
- Return the product to your nearest WAL-MART store or call Customer Assistance at 1-877-207-0923 (U.S.) or 1-877-556-0973 (Canada).

What does your warranty not cover?

- Parts subject to wear, including, without limitation, glass parts, glass containers, cutter/strainer, blades, seals, gaskets, clutches, motor brushes, and/or agitators, etc.
- Commercial use or any other use not found in printed directions.
- Damage from misuse, abuse, or neglect, including failure to clean

product regularly in accordance with manufacturer's instructions.

How does state law relate to this warranty?

- This warranty gives you specific legal rights, and you may also have other rights which vary from state to state or province to province.
- This warranty is in lieu of any other warranty or condition, whether express or implied, written or oral, including, without limitation, any statutory warranty or condition of merchantability or fitness for a particular purpose.
- WAL-MART, GE and the product manufacturer expressly disclaim all responsibility for special, incidental, and consequential damages or losses caused by use of this appliance. Any liability is expressly limited to an amount equal to the purchase price paid whether a claim, however instituted, is based on contract, indemnity, warranty, tort (including negligence), strict liability, or otherwise. Some states or provinces do not allow this exclusion or limitation of incidental or consequential losses, so the foregoing disclaimer may not apply to you.

What if you encounter a problem with this product while using it outside the country of purchase?

- The warranty is valid only in the country of purchase and if you follow the warranty claim procedure as noted.



is a trademark of General Electric Company and is used under the license by Wal-Mart Stores Inc.,

Download from www.gesomaterials.com or www.gesomaterials.com for more information.

Marketed in Canada by:

Wal-Mart Canada Corp.
1940 Argentia Road, Mississauga,

Ontario, Canada

Free Manuals Download Website

<http://myh66.com>

<http://usermanuals.us>

<http://www.somanuals.com>

<http://www.4manuals.cc>

<http://www.manual-lib.com>

<http://www.404manual.com>

<http://www.luxmanual.com>

<http://aubethermostatmanual.com>

Golf course search by state

<http://golfingnear.com>

Email search by domain

<http://emailbydomain.com>

Auto manuals search

<http://auto.somanuals.com>

TV manuals search

<http://tv.somanuals.com>